

SYMBOLS LEGEND	
	GRID LINES
	CAST-IN-PLACE CONCRETE
	OVERFRAMING
	SECTION OR DETAIL CUT
	SHEET NUMBER
	ELEVATION CUT
	ELEVATION CALLOUT
	DRAWING REVISION NUMBER
	CURRENT REVISION CLOUD
	WELDED-WIRE REINFORCEMENT
	ROUGHENED SURFACE, INTENTIONALLY ROUGHEN TO 1/4" AMPLITUDE, UNO
	SERVICE LOAD PROVIDED FOR SPECIALTY DESIGNER
	STEP
	SLOPE
	KEY NOTE
	SUBGRADE
	FORM SAVER

NOTES:  
1. ITEMS NOT DESIGNED BY MM ARE SHOWN HALFTONED  
A. ITEMS INCLUDE:  
a. EXISTING CONSTRUCTION  
b. PERFORMANCE SPECIFIED AND DEFERRED SUBMITTAL ITEMS (STAIRS, RAILINGS, ETC.)

**ABBREVIATIONS LIST**

(E) or EXIST	Existing	HD	Headed or HoldDown	TOP	Topping
(S)	Salvaged	HDAR	Headed Anchor Rod	TOW	Top of Wall
/	Per	HK	Hook	TRANS	Transverse
@	At	HORIZ	Horizontal	TWIS	Two-Way Slab
ACI	American Concrete Institute	HT	Height	TYP	Typical
ADDNL	Additional	HVAC	Heating-Ventilating and A/C	UNO	Unless Noted Otherwise
AFF	Above Finish Floor	IF	Inside Face	VERT	Vertical
ALT	Alternate	ID	Inside Diameter	W/	With
APA	American Plywood Association	IN	Inch	W/O	Without
APPROX	Approximate	INT	Interior	WO	Width or Wood
AR	Anchor Rod	IST	Joist	WP	Working Point or Waterproofing
ARCH	Architect or Architectural	JT	Joint	WWR	Welded Wire Reinforcing
Bl or BO	Bottom of	LCE	Compression Embedment	Wd	Width x Height
BL	Balance	LCS	Compression Lap Splice	Yd	Yard
BD	Board	LDH	Hook Development Length		
BLDG	Building	LG	Length		
BLKG	Blocking	LOC(s)	Location(s) or Locate		
BM	Beam	LONG	Longitudinal		
BN	Boundary Nail	LSH	Long Side Horizontal		
BOT or B	Bottom	LSL	Laminated Strand Lumber		
BRG	Bearing	LSV	Long Side Vertical		
BSMT	Basement	LT	Light		
BTWN	Between	LTE	Tension Embedment		
CC	Center to Center	LTS	Tension Lap Splice Length		
CFM	Cold Formed Metal Framing	LWT	Lightweight		
CJ	Control Joint	LVL	Level or Laminated Veneer Lumber		
CL	Centerline	LWC	Light Weight Concrete		
CLG	Ceiling	MACH	Machine		
CLR	Clear	MACH RM	Machine Room		
CLT	Cross Laminated Timber	MATL	Material		
CONC	Concrete	MAX	Maximum		
CONN	Connection	MBS	Metal Building Supplier		
CONST	Construction	MECH	Mechanical		
CONT	Continuous or Continuous	MEP	Mech/Elect/Plumb		
CONTR	Contractor	MIL	Micro-Lam		
COORD	Coordinate	MIN	Minimum		
CSJ	Construction Joint	MISC	Miscellaneous		
CTR(D)	Center(ed)	mm	Millimeter		
d	Penny	MNFR	Manufacturer		
dba	Rebar Diameter	MTL	Metal		
DBA	Deformed Bar Anchor	NR	North		
DBL	Double	N-S	North-South		
DFS	Deferred Submittal	NIC	Not in Contract		
DIA OR Ø	Diameter	NM	Non-Metallic		
DIAG	Diagonal	NO OR #	Number		
DIM	Dimension	NOM	Nominal		
DN	Down	NS	Non-Skirt or Near Side		
DO	Ditto	NTS	Not to Scale		
DP	Drilled Pier or Deep	NWC	Normal Weight Concrete		
DTL(s)	Detail(s)	O.F.	Outside Face		
DWG(s)	Drawing(s)	OAE	Or Approved Equivalent		
DWL(s)	Dowel(s)	OC	On Center		
E-W	East-West	OD	Outside Diameter		
EA	Each	OH	Opposite Hand		
EAP	Epoxy Coated	OPNG	Opening		
EE	Each End	OPP	Opposite		
EF	Each Face	OSV	Oversized		
EJ	Expansion Joint	OWS	One-Way Slab		
EL	Elevation	PAF	Powder Actuated Fastener		
ELEV	Elevator	PCA	Portland Cement Association		
EMBED	Embedded	PD	Pier Dowel		
ENR	Engineer	PEMB	Pre-Engineered Metal Building		
ENR	Engineer-of-Record	PEN	Penetration		
EPD	Environmental Product Data	PERP	Perpendicular		
EQ	Equal	PREFAB	Prefabricated		
EQ SP	Equally Spaced	PRELIM	Preliminary		
EQUIP	Equipment	QTY	Quantity		
EQS	Each Side	RAD	Radius		
EW	Each Way	RC	Reinforced Concrete		
EXP ANCH	Expansion Anchor	RE or REF	Refer to (Reference)		
EXT	Exterior	REIN	Reinforcing (ing)(iment)		
FAB	Fabricate	REQD	Required		
FD	Footing Dowel	REQD(s)	Requirement(s)		
FF	Finished Floor	RET	Return		
FIN	Finish(ed)	ROF	Random Oriented Fiber		
FLG	Flange	S	South		
FLR	Floor	SC	Slip Critical		
FND	Foundation	SCHED	Schedule		
FO	Foot or Foot	SECT	Section		
FRAM	Framing	SIM	Similar		
FS	Far Side	SOG	Slab on Grade		
FT	Foot or Feet	SP	Splice(s)		
FG	Footing	SP @	Splice at		
FIELD	Field Verify	STR	Standard		
GC	General Contractor	STIFF	Stiffener		
GL	Glu-lam	STR	Structural		
GLB	Glu-lam Beam	SYM	Symmetrical		
GR BM	Grade Beam	T	Top or Thermal Load		
GWP	Global Warning Potential	T&B	Top and Bottom		
HAS or HDAS	Headed Anchor Stud	T/ or T.O.	Top of		
		THK	Thick or Thickness		
		TOC	Top of Concrete		
		TOF	Top of Footing		

CONCRETE MIX TABLE								
CONC MIX TYPE	INTENDED USE	EXPOSURE CATEGORIES AND CLASSES	28 DAY STRENGTH (KSI)	CONC WEIGHT	MAX W/C RATIO, INCLUDING FLY ASH	MAX AGGREGATE SIZE, IN (ASTM C33)	TOTAL AIR CONTENT (%), NOTE 4	OTHER REQTS
1	FOOTINGS, TIE BEAMS	F0, S0, W1, C1	4	NWC	0.5	1 (#57)	-	-
2	STEM WALLS, PLASTERS	F1, S0, W1, C1	4	NWC	0.5	3/4 (#67)	5	MSS
3	INTERIOR SLABS-ON-GRADE	F0, S0, W0, C0	3	NWC	-	1 (#57)	NP	MSS
4	EXTERIOR SLABS-ON-GRADE	F3, S0, W2, C2	5	NWC	0.40	3/4 (#67)	NP	SEE ARCH FOR FINISH
5	ALL CONC EXPOSED TO WEATHER OR DECIDERS, SLABS, WALLS, AND PLASTERS	F3, S0, W2, C2	5	NWC	0.40	3/4 (#67)	6	MSS
6	ALL CONC OTHERWISE NOT SPECIFIED	F3, S0, W1, C2	5	NWC	0.4	3/4 (#67)	6	-

**CONCRETE MIX TABLE ABBREVIATIONS:**  
- FX = FREEZING AND THAWING CLASS  
- SX = SULFATE CLASS  
- WX = IN CONTACT WITH WATER CLASS  
- CX = CORROSION PROTECTION OF REINFORCEMENT CLASS  
- NWC = NORMAL WEIGHT CONCRETE  
- MSS = MAXIMUM SHRINKAGE STRAIN LIMITED, SEE SPECIFICATIONS

**CONCRETE MIX TABLE NOTES:**  
1) CONCRETE MIX DESIGNS ARE A PERFORMANCE SPECIFIED ITEM DESIGNED BY THE CONTRACTOR. THE CONTRACTOR SHALL PROVIDE A CONCRETE MIX PERFORMING THE PERFORMANCE REQUIREMENTS SPECIFIED IN THE "CONCRETE MIX TABLE" IN ADDITION TO THE REQUIREMENTS BELOW.  
2) PROPORTIONS OF MATERIALS IN CONCRETE MIXES SHALL BE ESTABLISHED TO:  
2A) PROVIDE THE MINIMUM COMPRESSIVE STRENGTH AS INDICATED IN THE MIX TABLE. DO NOT EXCEED THE MAXIMUM WATER-CEMENT RATIO

2B) PROVIDE WORKABILITY AND CONSISTENCY FOR SLAB FINISHING AND TO PERMIT CONCRETE TO BE WORKED READILY INTO FORMS AND AROUND REINFORCEMENT UNDER CONDITIONS OF PLACEMENT TO BE EMPLOYED WITHOUT SEGREGATION OR EXCESSIVE BLEEDING. CONTRACTOR SHALL SELECT APPROPRIATE SLUMP, USE ADMIXTURES AS REQUIRED TO OBTAIN DESIRED RESULTS.  
2C) FOR CONCRETE PLACED BY PUMPING, PROVIDE CONCRETE MIX FLOWABILITY TO FACILITATE PUMPING. ENTRAINED AIR MAY BE USED TO FACILITATE PUMPING SUBJECT TO THE PROVISIONS OF NOTE 4 BELOW

3) FOR THE MAXIMUM COARSE AGGREGATE SIZE INDICATED, USE THE FOLLOWING AGGREGATE SIZE NUMBERS PER ASTM C33:  
- 3/4" #47 AGGREGATE  
- 1" #57 AGGREGATE

4) WHERE AIR CONTENT IS INDICATED IN THE MIX TABLE, PROVIDE AIR ENTRAINING ADMIXTURE TO MEET THE SPECIFIED AIR PERCENTAGE. TOTAL AIR CONTENT LIMITS INCLUDE BOTH ENTRAINED AND ENTRAPPED AIR ± 1.12%. "NP" IN COLUMN INDICATES ADDITION OF ENTRAINED AIR IS NOT PERMITTED EXCEPT WHERE CONTRACTOR CAN DEMONSTRATE SLABS WITH ENTRAINED AIR WILL HAVE A FINISH ACCEPTABLE TO THE ARCHITECT WITHOUT BLUSTERS. AIR CONTENT NOTED IS BASED ON 3/4" AGGREGATE. IF 3/8" AGGREGATE IS USED, INCREASE AIR CONTENT BY 1% FOR F1 EXPOSURE CLASS AND 1.12% FOR F2 AND F3 EXPOSURE CLASSES. IF THE ARCHITECT HAS SPECIFIED A DL FOR THE CONCRETE ELEMENT, PROVIDE AIR REQUIRED TO COMPLY WITH UL.

5) FOR EXPOSED CONCRETE FLOORS, THE CONTRACTOR SHALL ENSURE THE FLOOR FINISH IS ACCEPTABLE TO THE ARCHITECT AND OWNER WITH THE SELECTED CEMENT TYPE, CEMENT CONTENT, AND FINISHING PROCEDURE

6) SEE SPECIFICATIONS FOR SUPPLEMENTARY CEMENTITIOUS MATERIAL (SCM) REQUIREMENTS

7) FOR CONCRETE MIXTURES ASSIGNED TO EXPOSURE CLASS F3, THE MAXIMUM PERCENTAGE OF CEMENTITIOUS MATERIAL WHICH IS CLASSIFIED AS SCM (INCLUDING FLY ASH, NATURAL POZZOLANS, SILICA FUME, AND SLAG CEMENT) SHALL BE AS FOLLOWS. THE INDIVIDUAL LIMITS SHOWN BELOW SHALL APPLY REGARDLESS OF THE NUMBER OF CEMENTITIOUS MATERIALS IN THE CONCRETE MIXTURE:  
- FLY ASH OR NATURAL POZZOLANS CONFORMING TO ASTM C618 = 25%  
- SLAG CEMENT CONFORMING TO ASTM C989 = 50%  
- SILICA FUME CONFORMING TO ASTM C1240 = 10%  
- TOTAL OF FLY ASH OR OTHER POZZOLANS AND SILICA FUME = 35%  
- TOTAL OF FLY ASH OR OTHER POZZOLANS, SLAG CEMENT, AND SILICA FUME = 50%

8) BASED ON THE SULFATE CLASSIFICATIONS LISTED IN THE "CONCRETE MIX TABLE" THE FOLLOWING CEMENTS SHALL BE USED. SEE THE SPECIFICATIONS FOR ADDITIONAL REQUIREMENTS:  
8A) S0 SULFATE CLASSIFICATION: PORTLAND CEMENT ASTM C150 TYPE III OR BLENDED HYDRAULIC CEMENT ASTM C595 TYPES

8B) S1 SULFATE CLASSIFICATION: PORTLAND CEMENT ASTM C150 TYPE II OR BLENDED HYDRAULIC CEMENT ASTM C595 TYPES WITH "MS" DESIGNATION. MINERAL FILLERS DERIVED FROM CARBONATE AGGREGATE ARE PROHIBITED

9) FOR CONCRETE MIXTURES ASSIGNED TO W1 OR W2 CLASSES, EVIDENCE SHALL BE SUBMITTED THAT THE CONCRETE MIXTURE COMPLIES WITH THE FOLLOWING:  
9A) AGGREGATES ARE NOT ALKALI-SILICA REACTIVE OR MEASURES TO MITIGATE ALKALI-SILICA REACTIVITY HAVE BEEN ESTABLISHED  
9B) AGGREGATES ARE NOT ALKALI-CARBONATE REACTIVE

10) MAXIMUM CHLORIDE ION LIMITS (PERCENTAGE BY MASS OF CEMENTITIOUS MATERIALS INCLUDING SCM) ASSOCIATED WITH EXPOSURE CLASS IN "CONCRETE MIX TABLE" ARE AS FOLLOWS:  
- C0 = 1.00  
- C1 = 0.30  
- C2 = 0.15

11) DRAWINGS AND CALCULATIONS SHALL BE SIGNED AND SEALED BY A LICENSED ENGINEER IN THE STATE OF ARKANSAS.

12) COLUMN, FOUNDATION AND FRAME LOCATIONS ARE TO REMAIN AS SHOWN ON THE ARCHITECTURAL DRAWINGS.

13) FIELD COLUMN REACTIONS PER PRE-ENGINEERED METAL BUILDING MANUFACTURER ARE TO BE PROVIDED PRIOR TO FOUNDATION CONSTRUCTION. REVISIONS TO FOUNDATIONS AND ANCHOR BOLTS MAY BE REQUIRED BASED ON THE FINAL COLUMN REACTIONS. CONTRACTOR TO MAKE ALLOWANCE FOR THIS REVISION IN THE CONSTRUCTION SCHEDULE AND PRICING.

14) CONNECT PRE-ENGINEERED METAL BUILDING FRAMING TO FOUNDATIONS WITH A PINNED CONNECTION EXCEPT WHERE SPECIFICALLY NOTED OTHERWISE. MOMENT CONNECTIONS TO FOUNDATIONS ARE NOT PERMITTED UNLESS NOTED ON THE DRAWINGS OR APPROVED BY THE ENGINEER IN WRITING PRIOR TO SUBMITTAL OF DRAWINGS OR CALCULATIONS.

15) GC SHALL COORDINATE WITH ALL DISCIPLINES AND TRADES TO DETERMINE ALL POINT LOAD LOCATIONS AND MAGNITUDES LARGER THAN 100 LBS AND PROVIDE TO PRE-ENGINEERED METAL BUILDING SUPPLIER FOR DESIGN OF ENTIRE PRE-ENGINEERED METAL BUILDING SYSTEM INCLUDING BUT NOT LIMITED TO ROOF PURLINS AND PRE-ENGINEERED METAL BUILDING FRAMES. SUCH POINT LOADS MAY INCLUDE MECHANICAL DUCT WORK, MECHANICAL PIPING, FANS, PLUMBING, ROOF DRAIN LEADERS, LARGE ELECTRICAL CONDUITS, CABLE TRAYS, FIRE SPRINKLER LINES, ARCHITECTURAL SOFFITS, ETC.

16) SERVICEABILITY:  
2A) SEE PRE-ENGINEERED METAL BUILDING DEFLECTIONS AND DRIFT LIMITS TABLE FOR REQUIRED LIMITS.

17) ANCHOR RODS:  
3A) ANCHOR ROD LAYOUT, DIAMETER, GRADE, AND PROJECTION TO BE PROVIDED BY PRE-ENGINEERED METAL BUILDING SUPPLIER. ANCHOR ROD EMBEDMENT TO BE AS SHOWN IN THE STRUCTURAL DRAWINGS.

18) CANOPIES:  
4A) CANOPY FRAMING AND METAL DECK IS SUPPLIED AND DESIGNED BY PRE-ENGINEERED METAL BUILDING SUPPLIER.

4B) FOR DESIGN OF SNOW AT CANOPY, USE THERMAL FACTOR (CT)=1.2 FOR UNHEATED CANOPIES IN ACCORDANCE WITH THE BUILDING CODE

4C) DESIGN CANOPY TO SUPPORT SLIDING/DRIFTING SNOW FROM ADJACENT HIGH ROOFS IN ACCORDANCE WITH THE BUILDING CODE.

**CONCRETE NOTES**  
1) GENERAL:  
1A) ALL WORK SHALL CONFORM WITH ACI 301-10, UNLESS NOTED OTHERWISE IN DRAWINGS OR PROJECT SPECIFICATIONS.  
1B) DETAILS SHALL BE IN ACCORDANCE WITH THE DRAWINGS, PROJECT SPECIFICATIONS, AND ACI PUBLICATION SP-66 (2004) "ACI DETAILING MANUAL"  
2) REINFORCING MATERIALS:  
2A) SEE "REINFORCING MATERIAL TABLE"  
3) REINFORCING FABRICATION:  
3A) SPLICES:  
- NO SPACING OF REINFORCEMENT PERMITTED EXCEPT AS NOTED ON DRAWINGS. MAKE BARS CONTINUOUS AROUND CORNERS WHERE DETAIL NOT PROVIDED. WHERE PERMITTED, SPLICES MAY BE MADE BY CONTACT LAPS OR MECHANICAL CONNECTORS.  
- SEE LAP SPACING & DEVELOPMENT LENGTHS SCHEDULE FOR LAP LENGTHS.  
- SPICE CONTINUOUS BARS LITS TOP AND LITS, RESPECTIVELY, UNLESS NOTED OTHERWISE.  
3B) MISCELLANEOUS REINFORCING REQUIREMENTS:  
- PROVIDE ADDITIONAL BARS OR STIRRUPS REQUIRED TO SECURE REINFORCING IN PLACE DURING CONCRETE PLACEMENT  
- MAKE ALL REINFORCING BAR BENDS IN THE FABRICATOR'S SHOP UNLESS NOTED  
- NO WELDING OF REINFORCING PERMITTED UNLESS NOTED ON DRAWINGS. WHERE PERMITTED, PERFORM WELDING IN ACCORDANCE WITH AWS D1.4:2011  
- PROVIDE ADDED REINFORCING TO TRIM ALL OPENINGS, NOTCHES, AND REINTRANS CORNERS AS NOTED IN TYPICAL DETAILS.  
4) STRUCTURAL CONCRETE MIX REQUIREMENTS:  
4A) SEE CONCRETE MIX TABLE  
5) TAKE PRECAUTIONS TO MINIMIZE SLAB CURLING. GRIND SLAB OR USE LEVELING COMPOUND IF FLOOR FLATNESS AND LEVELNESS VALUES ARE NOT ACCEPTABLE TO THE ARCHITECT.  
6) NON-SHRINK GROUT:  
6A) CONFORM TO ASTM C1107  
6B) ACHIEVE 6000 PSI COMPRESSIVE STRENGTH AT 28 DAYS.  
7) PLACING REINFORCEMENT:  
7A) REINFORCEMENT PROTECTION:  
- SEE REBAR COVER TABLE  
- SEE ACI 117-10 FOR REINFORCEMENT PLACING TOLERANCES  
7B) PROVIDE ACCESSORIES NECESSARY TO PROPERLY SUPPORT REINFORCING AND WELDED WIRE REINFORCEMENT AT POSITIONS SHOWN ON PLANS. ALL REINFORCING, DOWELS, BOLTS, AND EMBEDDED PLATES SHALL BE SET AND TIED IN PLACE BEFORE THE CONCRETE IS POURED. "STABBING" INTO PREVIOUSLY PLACED CONCRETE IS NOT PERMITTED.  
8) CONSTRUCTION/CONTROL JOINTS:  
8A) SUBMIT DRAWINGS SHOWING CONSTRUCTION AND CONTROL JOINT LOCATIONS ALONG WITH THE SEQUENCE OF POURS. CONSTRUCTION JOINT LOCATIONS AND CASTING SEQUENCE SHALL BE ARRANGED TO MINIMIZE THE EFFECTS OF ELASTIC AND LONG-TERM SHORTENING/SHRINKAGE.  
8B) CONSTRUCTION JOINTS IN SLABS-ON-GRADE SHALL BE LOCATED TO ACCOMMODATE THE MAXIMUM LENGTH AND AREA THE CONTRACTOR CAN REASONABLY POUR, FINISH, AND JOINT IN THE SAME DAY, BUT SHALL NOT EXCEED 150 FEET WITH A MAXIMUM AREA OF 15,000 SQUARE FEET UNLESS APPROVED BY THE ENGINEER.  
8C) CONCRETE CONSTRUCTION JOINT SURFACE SHALL BE CLEANED AND ALL LATANCE AND LOOSE MATERIAL REMOVED PRIOR TO SECOND CONCRETE PLACEMENT.  
9) SLEEVES, OPENINGS, AND EMBEDDED PIPE/CONDUITS:  
9A) GENERAL:  
- REFER TO TYPICAL DETAILS FOR REQUIREMENTS FOR CONDUIT AND PIPE EMBEDDED IN WALLS  
- REFER TO TYPICAL DETAILS FOR SPACING AND LAYOUT LIMITATIONS FOR SLEEVES AND OPENINGS  
- FORM OPENINGS AND PROVIDE SLEEVES BEFORE PLACING CONCRETE. CORING OF CONCRETE IS NOT PERMITTED  
9B) REINFORCING:  
- REFER TO TYPICAL DETAILS FOR REINFORCEMENT REQUIREMENTS AT SLEEVES, OPENINGS OR CONDUIT  
- DO NOT CUT REINFORCING WHICH MAY CONFLICT

**REINFORCING MATERIAL TABLE**

REINF ELEMENT	ASTM	Fy (KSI)	Fu (KSI)	COMMENTS
TYP REINFORCING	A615	60	90	-
WELDED	A706	60	90	-
WELDED WIRE REINFORCING, SMOOTH	A1064	65	75	-
EPOXY COATING OF REINFORCING A775 OR A834	-	-	-	-

**FOUNDATION NOTES**  
1) DESIGN CRITERIA:  
THE GEOTECHNICAL REPORT PREPARED BY UES, NUMBER A25138.00362.001, DATED FEBRUARY 13, 2026, PROVIDED CRITERIA FOR THE FOUNDATION DESIGN FOR THE PROJECT.  
2) FOOTINGS:  
2A) FOOTING DESIGN CRITERIA BASED ON GROUND IMPROVEMENT, SEE NOTE BELOW  
- MAXIMUM TOTAL LOAD BEARING PRESSURE = 5,000 PSF  
- MINIMUM CONTINUOUS FOOTING WIDTH = 1.5 FT  
- MINIMUM SPREAD FOOTING WIDTH = 1.5 FT  
- ULTIMATE COEFFICIENT OF FRICTION TO RESIST LATERAL LOADS = 0.35  
- FROST DEPTH TO BOTTOM OF FOUNDATION = 18 IN  
3) FOUNDATION WALLS:  
3A) EQUIVALENT FLUID PRESSURES USED FOR WALL DESIGN:  
- "ACTIVE" CONDITION = 44 PCF  
- "AT REST" CONDITION = 65 PCF  
- ULTIMATE COEFFICIENT OF FRICTION TO RESIST LATERAL LOADS = 0.35  
3B) WALL DESIGN BASED ON SITU FILL MATERIAL ADJACENT TO FOUNDATION WALLS. SEE GEOTECHNICAL REPORT FOR REQUIREMENTS.  
4) GROUND IMPROVEMENT  
4A) GROUND IMPROVEMENT CONSISTING OF ENGINEERED AGGREGATE OR APPROVED ALTERNATE METHOD SHALL BE PROVIDED UNDER STRUCTURAL FOUNDATIONS AND SLAB-ON-GRADE OVER ENTIRE BUILDING FOOTPRINT. IMPROVED SOILS SHALL MEET THE FOLLOWING:  
- PROVIDE INDICATED BEARING PRESSURE WITH MAXIMUM TOTAL SETTLEMENT OF 1 INCH AND MAXIMUM DIFFERENTIAL SETTLEMENT OF 1/2" OVER A 30-FT SPAN IN ANY DIRECTION  
- PROVIDE INDICATED ULTIMATE COEFFICIENT OF FRICTION  
- CONTRACTOR SHALL HIRE A SPECIALTY SUBCONTRACTOR EXPERIENCED IN GROUND IMPROVEMENT TECHNIQUES IN SOIL CONDITIONS SIMILAR TO THOSE OF THIS SITE  
- FOOTINGS AND SLAB-ON-GRADE HAVE BEEN DESIGNED FOR UNIFORM BEARING PRESSURE STRENGTH UNDERNEATH FOOTINGS AND SLABS  
5) SOIL PREPARATION  
- CREATE BUFFER ZONE OF SUITABLE FILL MATERIAL BELOW FOUNDATION SLABS AND FOOTINGS TO THE APPROPRIATE DEPTH AS STATED IN GEOTECHNICAL REPORT. ADD AN ADDITIONAL LAYER OF 4" THICK GRANULAR MATERIAL UNDER THE FLOOR SLABS AS STATED IN THE GEOTECHNICAL REPORT

**PRE-ENGINEERED METAL BUILDING NOTES**  
1) GENERAL:  
1A) THE PRE-ENGINEERED METAL BUILDING IS A DEFERRED SUBMITTAL NOT DESIGNED BY MARTIN/MARTIN. THE PRE-ENGINEERED METAL BUILDING DESIGNER IS RESPONSIBLE FOR THE GRAVITY AND LATERAL DESIGN OF THE BUILDING FRAME, GIRTS, ROOF FRAMING, METAL DECKING, WALL CLADDING, BASEPLATES, ETC. REFERENCE THE PRE-ENGINEERED METAL BUILDING DESIGN CRITERIA AND THE DEFERRED SUBMITTAL NOTES FOR ADDITIONAL INFORMATION AND DESIGN REQUIREMENTS.  
1B) THE PRE-ENGINEERED STRUCTURE SHALL BE DESIGNED IN ACCORDANCE WITH THE LATEST ADDITION OF THE MBMA METAL BUILDING SYSTEM MANUAL AND THE CODES AND DESIGN CRITERIA LISTED ON THE STRUCTURAL DRAWINGS AND IN THE SPECIFICATIONS.  
1C) DRAWINGS AND CALCULATIONS SHALL BE SIGNED AND SEALED BY A LICENSED ENGINEER IN THE STATE OF ARKANSAS.  
1D) COLUMN, FOUNDATION AND FRAME LOCATIONS ARE TO REMAIN AS SHOWN ON THE ARCHITECTURAL DRAWINGS.  
1E) FINAL COLUMN REACTIONS PER PRE-ENGINEERED METAL BUILDING MANUFACTURER ARE TO BE PROVIDED PRIOR TO FOUNDATION CONSTRUCTION. REVISIONS TO FOUNDATIONS AND ANCHOR BOLTS MAY BE REQUIRED BASED ON THE FINAL COLUMN REACTIONS. CONTRACTOR TO MAKE ALLOWANCE FOR THIS REVISION IN THE CONSTRUCTION SCHEDULE AND PRICING.  
1F) CONNECT PRE-ENGINEERED METAL BUILDING FRAMING TO FOUNDATIONS WITH A PINNED CONNECTION EXCEPT WHERE SPECIFICALLY NOTED OTHERWISE. MOMENT CONNECTIONS TO FOUNDATIONS ARE NOT PERMITTED UNLESS NOTED ON THE DRAWINGS OR APPROVED BY THE ENGINEER IN WRITING PRIOR TO SUBMITTAL OF DRAWINGS OR CALCULATIONS.  
1G) GC SHALL COORDINATE WITH ALL DISCIPLINES AND TRADES TO DETERMINE ALL POINT LOAD LOCATIONS AND MAGNITUDES LARGER THAN 100 LBS AND PROVIDE TO PRE-ENGINEERED METAL BUILDING SUPPLIER FOR DESIGN OF ENTIRE PRE-ENGINEERED METAL BUILDING SYSTEM INCLUDING BUT NOT LIMITED TO ROOF PURLINS AND PRE-ENGINEERED METAL BUILDING FRAMES. SUCH POINT LOADS MAY INCLUDE MECHANICAL DUCT WORK, MECHANICAL PIPING, FANS, PLUMBING, ROOF DRAIN LEADERS, LARGE ELECTRICAL CONDUITS, CABLE TRAYS, FIRE SPRINKLER LINES, ARCHITECTURAL SOFFITS, ETC.  
2) SERVICEABILITY:  
2A) SEE PRE-ENGINEERED METAL BUILDING DEFLECTIONS AND DRIFT LIMITS TABLE FOR REQUIRED LIMITS.  
3) ANCHOR RODS:  
3A) ANCHOR ROD LAYOUT, DIAMETER, GRADE, AND PROJECTION TO BE PROVIDED BY PRE-ENGINEERED METAL BUILDING SUPPLIER. ANCHOR ROD EMBEDMENT TO BE AS SHOWN IN THE STRUCTURAL DRAWINGS.  
4) CANOPIES:  
4A) CANOPY FRAMING AND METAL DECK IS SUPPLIED AND DESIGNED BY PRE-ENGINEERED METAL BUILDING SUPPLIER.  
4B) FOR DESIGN OF SNOW AT CANOPY, USE THERMAL FACTOR (CT)=1.2 FOR UNHEATED CANOPIES IN ACCORDANCE WITH THE BUILDING CODE.  
4C) DESIGN CANOPY TO SUPPORT SLIDING/DRIFTING SNOW FROM ADJACENT HIGH ROOFS IN ACCORDANCE WITH THE BUILDING CODE.

**CONCRETE MIX TABLE**

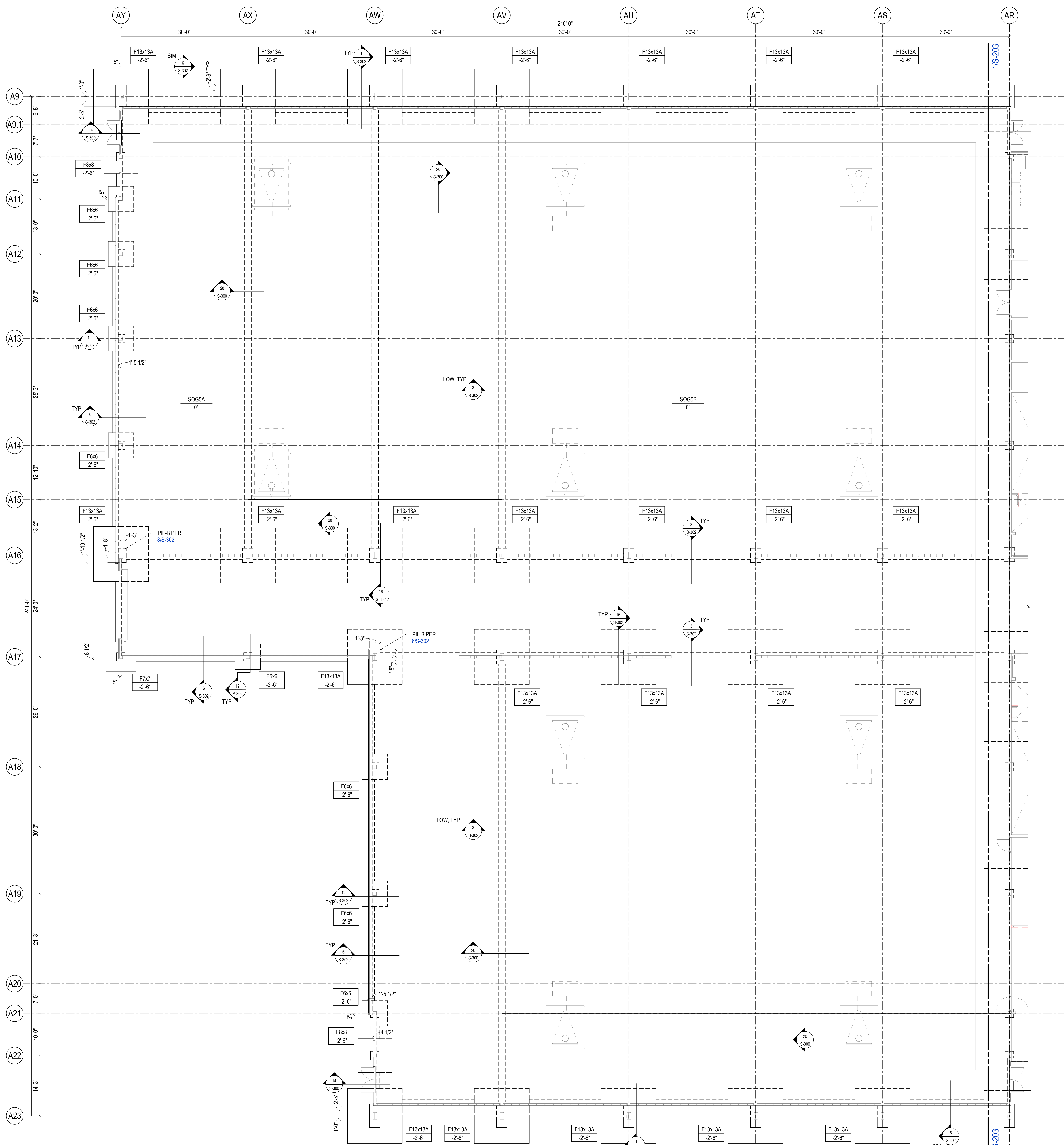
**CONCRETE MIX TABLE ABBREVIATIONS:**  
- FX = FREEZING AND THAWING CLASS  
- SX = SULFATE CLASS  
- WX = IN CONTACT WITH WATER CLASS  
- CX = CORROSION PROTECTION OF REINFORCEMENT CLASS  
- NWC = NORMAL WEIGHT CONCRETE  
- MSS = MAXIMUM SHRINKAGE STRAIN LIMITED, SEE SPECIFICATIONS

**CONCRETE MIX TABLE NOTES:**  
1) CONCRETE MIX DESIGNS ARE A PERFORMANCE SPECIFIED ITEM DESIGNED BY THE CONTRACTOR. THE CONTRACTOR SHALL PROVIDE A CONCRETE MIX PERFORMING THE PERFORMANCE REQUIREMENTS SPECIFIED IN THE "CONCRETE MIX TABLE" IN ADDITION TO THE REQUIREMENTS BELOW.  
2) PROPORTIONS OF MATERIALS IN CONCRETE MIXES SHALL BE ESTABLISHED TO:  
2A) PROVIDE THE MINIMUM COMPRESSIVE STRENGTH AS INDICATED IN THE MIX TABLE. DO NOT EXCEED THE MAXIMUM WATER-CEMENT RATIO

2B) PROVIDE WORKABILITY AND CONSISTENCY FOR SLAB FINISHING AND TO PERMIT CONCRETE TO BE WORKED READILY INTO FORMS AND AROUND REINFORCEMENT UNDER CONDITIONS OF PLACEMENT TO BE EMPLOYED WITHOUT SEGREGATION OR EXCESSIVE BLEEDING. CONTRACTOR SHALL SELECT APPROPRIATE SLUMP, USE ADMIXTURES AS REQUIRED TO OBTAIN DESIRED RESULTS.  
2C) FOR CONCRETE PLACED BY PUMPING, PROVIDE CONCRETE MIX FLOWABILITY TO FACILITATE PUMPING. ENTRAINED AIR MAY BE USED TO FACILITATE PUMPING SUBJECT TO THE PROVISIONS OF NOTE 4 BELOW

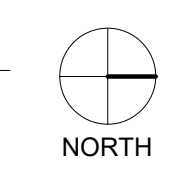






**PEMB FOUNDATION - SECTOR A**

1/8" = 1'-0"



**PLAN NOTES**

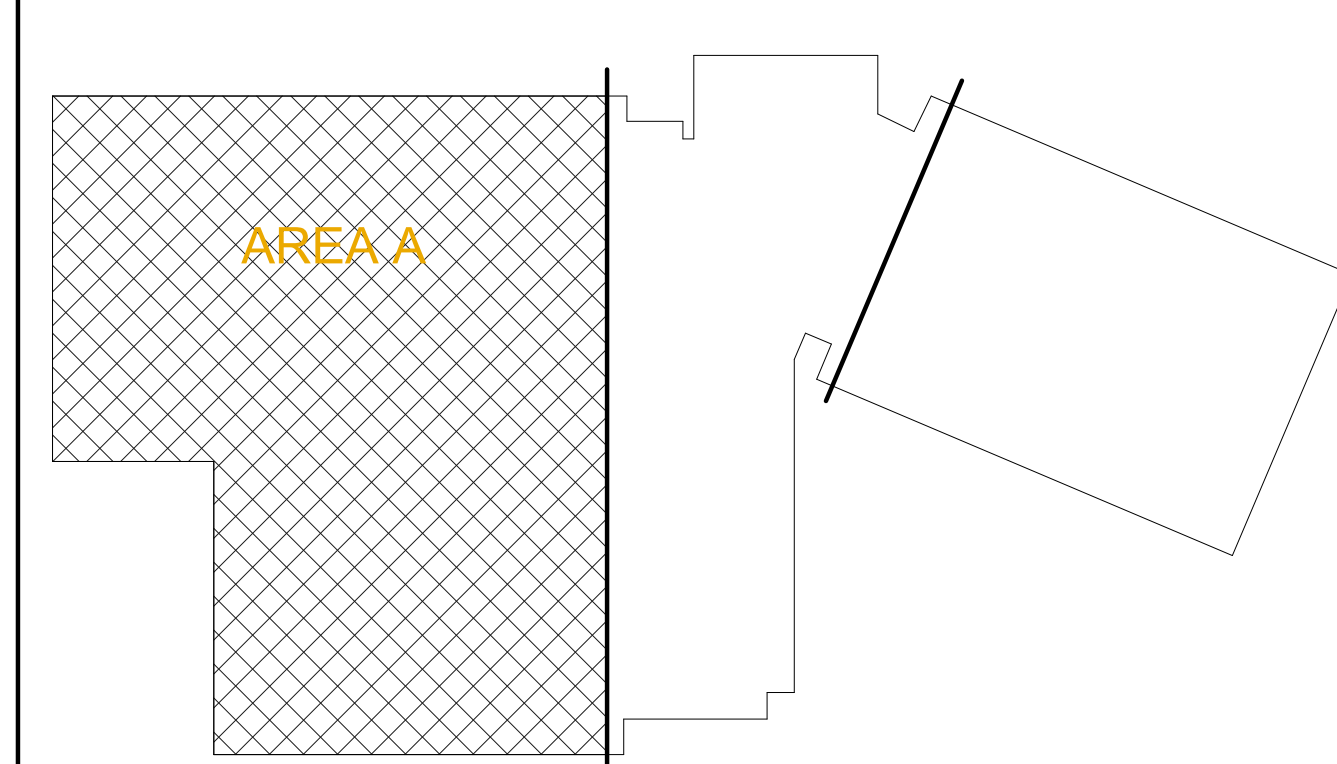
- 1) GENERAL:**
  - 1A) SEE S3 SERIES SHEETS FOR GENERAL NOTES, SYMBOLS AND ABBREVIATIONS.
  - 1B) USGS ELEVATION 214.25' - PROJECT ELEVATION 0'-0" VERIFY IN FIELD AND WITH CIVIL AND ARCHITECTURAL DRAWINGS PRIOR TO CONSTRUCTION.
  - 1C) SEE S3 SERIES SHEETS FOR TYPICAL CONCRETE DETAILS.
- 2) STEM WALLS:**
  - 2A) SEE PLAN FOR DIMENSIONED LOCATIONS OF STEM WALLS.
  - 2B) SEE 15S-300 FOR TYPICAL PENETRATIONS THROUGH STEM WALLS.
  - 2C) REINFORCING:
    - SEE 4S-301 FOR STEM WALL HORIZONTAL CORNER AND INTERSECTION REINFORCING
    - SEE 8S-302 FOR TYPICAL PILASTER REINFORCING
    - SEE 6S-302 FOR TYPICAL STEM WALL REINFORCING
- 3) SLAB-ON-GRADE:**
  - 3A) SEE DETAIL 10S-300 FOR TYPICAL SLAB-ON-GRADE SCHEDULE AND DETAIL.
  - 3B) SEE DETAIL 8S-300 FOR TYPICAL SLAB-ON-GRADE LAYOUT INFORMATION.
  - 3C) SEE ARCH AND MECH DRAWINGS FOR SLAB SLOPES, DEPRESSIONS, FILL, PADS, AND CURBS NOT SHOWN ON THE STRUCTURAL DRAWINGS.
  - SEE 18S-300 MECHANICAL EQUIPMENT PAD DETAILS
  - 3D) SEE ARCH DRAWINGS FOR VAPOR RETARDER LOCATIONS. INSTALL VAPOR RETARDER DIRECTLY UNDER SLAB PER RECOMMENDATIONS OF PCA AND ACI 302.1R-04. TAKE PRECAUTIONS TO MINIMIZE SLAB CURLING. GRIND SLAB TO ACHIEVE SPECIFIED FLOOR FLATNESS AND LEVELNESS VALUES.
  - 3E) SLABS-ON-GRADE WITH EXTERIOR EXPOSURE, SHALL BE REINFORCED WITH EPOXY COATED (EC) REINFORCING.
  - 3F) SEE 'CONCRETE NOTES' FOR JOINTING REQUIREMENTS AT SLAB-ON-GRADE.
- 4) COLUMNS/PILASTERS:**
  - 4A) ALL COLUMNS/PILASTERS ARE CENTERED ON THE INTERSECTION OF GRIDS BELOW THE SUPPORTED COLUMN UNLESS DIMENSIONED OTHERWISE ON PLAN. COLUMN LOCATIONS TO BE VERIFIED WITH PEMB AND ARCH DRAWINGS.
- 5) FOUNDATIONS:**
  - 5A) SEE DETAIL 7S-301 FOR STRIP FOOTING.
  - 5B) SEE DETAIL 2S-301 FOR SPREAD FOOTING.
  - 5C) SEE DETAIL 3S-302 FOR THE BEAM REQUIREMENTS.
- 6) MISCELLANEOUS NOTES:**
  - 6A) SEE SHEET S-300 FOR MISCELLANEOUS CONCRETE DETAILS AND INFORMATION INCLUDING CONCRETE LAP SPlice SCHEDULE, TYPICAL HOOK DETAILS, AND CLEAR COVER REQUIREMENTS.
  - 6B) SEE DETAIL 15S-300 FOR TYPICAL REINFORCING AT WALL PENETRATIONS.
  - 6C) CONTRACTOR TO FIELD LOCATE ALL UTILITIES BELOW GRADE. CONTRACTOR SHALL NOTIFY ARCHITECT BY DIMENSIONED DRAWING OF LOCATIONS WHERE UTILITIES CONFLICT WITH FOUNDATION INSTALLATION. CONTRACTOR SHALL MAKE ALLOWANCE FOR THE RESOLUTION OF SUCH DISCOVERIES PRIOR TO PROCEEDING WITH EFFECTED FOUNDATIONS.

**PROVIDED PEMB COLUMN REACTIONS - A**

LETTER GRID	NUMBER GRID	P MAX (kips)	P MIN (kips)	V MAX (kips)	M MAX (kip-ft)
AS	A9	64	-18	40	396
	A16	81	-25	50	366
	A17	88	-24	52	364
AT	A9	48	-15	34	335
	A16	84	-17	49	235
	A17	63	-17	15	235
AU	A9	66	-17	49	339
	A16	85	-22	15	236
	A17	88	-19	34	236
AV	A9	65	-18	48	339
	A16	86	-17	52	233
	A17	89	-29	34	234
AW	A9	47	-15	48	296
	A16	83	-22	53	274
	A17	23	-5	41	162
AX	A9	17	-8	32	0
	A18	14	-5	47	0
	A21	12	-6	9	0
AY	A9	32	-28	39	170
	A10	13	-6	49	0
	A11	7	-2	4	0
A9	A12	10	-4	6	0
	A13	15	-4	19	0
	A14	16	-7	4	0
A16	A16	17	-4	6	177
	A17	8	-2	8	0

**NOTES:**  
1. ALL COLUMN REACTIONS SHOWN ARE SERVICE LEVEL LOAD COMBINATIONS  
2. 'V MAX' AND 'M MAX' FORCES ARE ANTICIPATED TO ACT IN THE STRONG AXIS OF THE COLUMNS UNLESS NOTED OTHERWISE

**KEY PLAN**



SEAL

CLIENT



City of West Memphis

DRAWING ISSUE

NO.	DATE	DESCRIPTION

ARCHITECT

**PROJECT LUONG**  
HOUSTON 6200 Gessner Rd., Suite 775, Houston, TX 77054  
SAN ANTONIO 700 N. St. Marys St., Suite 1400, San Antonio, TX 78205  
SANTA MONICA 730 Arizona Ave., Santa Monica, CA 90401  
+1-347-708-8041  
+1-726-246-1378  
+1-310-394-7280  
ProjectLuong.com

CONSULTANT



JOB INFO

**West Memphis Rec Center**  
RECREATION CENTER  
ST HWY 191/40 SERV.  
West Memphis, AR 72301

MM JOB No.: 26.0149.S.01

SHEET TITLE

FOUNDATION PLAN - SECTOR A

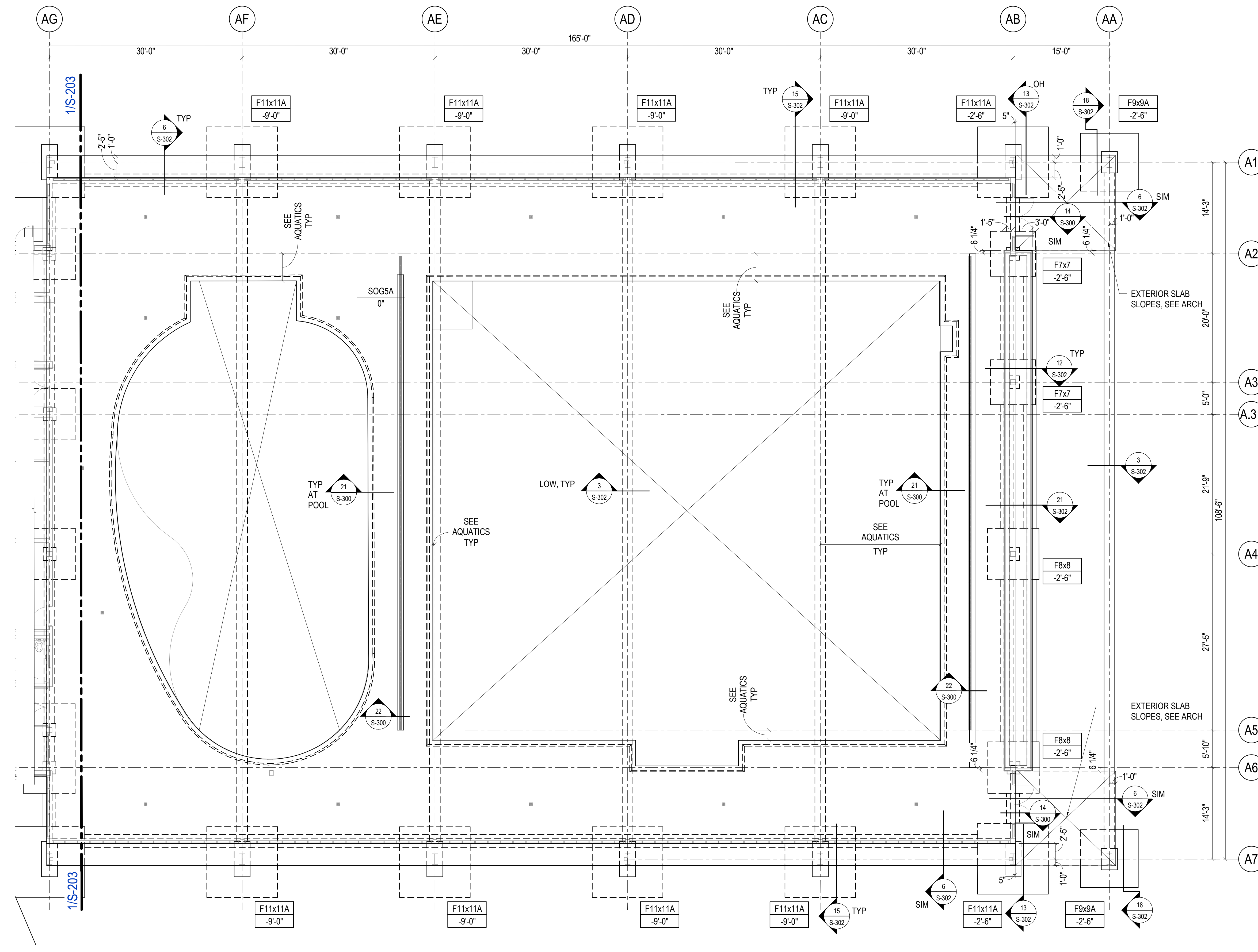
SHEET NUMBER

**S-202**

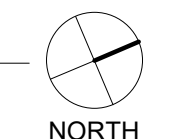
DESIGNERS: Engr. Douglas Newby  
LEAD DESIGNER: DAN DOHNEY  
PROJECT MANAGER: RAE CHEN  
DATE: 10/20/2023  
FILE PATH: \\c:\projects\2023\10\10-20-23\West Memphis Rec Center\26.0149.S.01\WEST MEMPHIS REC CENTER.SW



DESIGNERS: Engr. Douglas Newkirk  
 LEAD PROJECT ENGINEER: DAN DOHNEY  
 PROJECT ENGINEER: JEFFREY W. HARRIS  
 PROJECT MANAGER: ABE CHEN



**PEMB FOUNDATION - SECTOR C**  
 1/8" = 1'-0"



**PLAN NOTES**

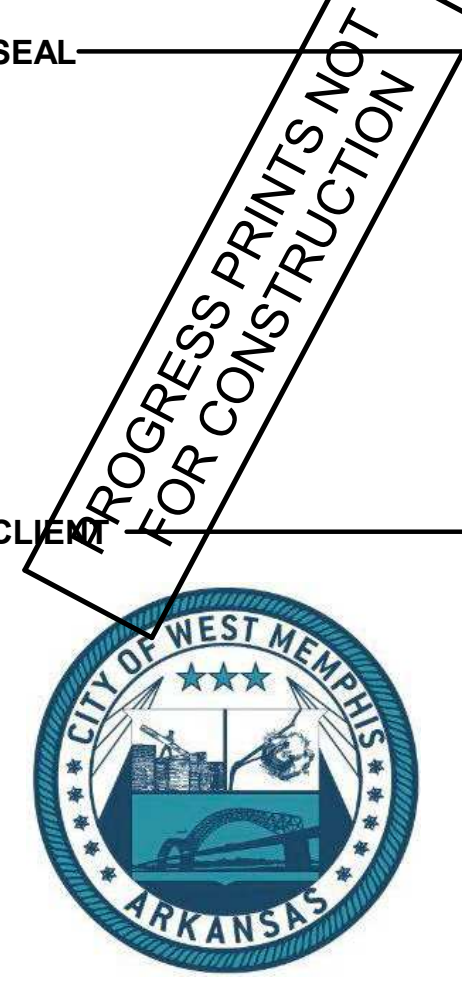
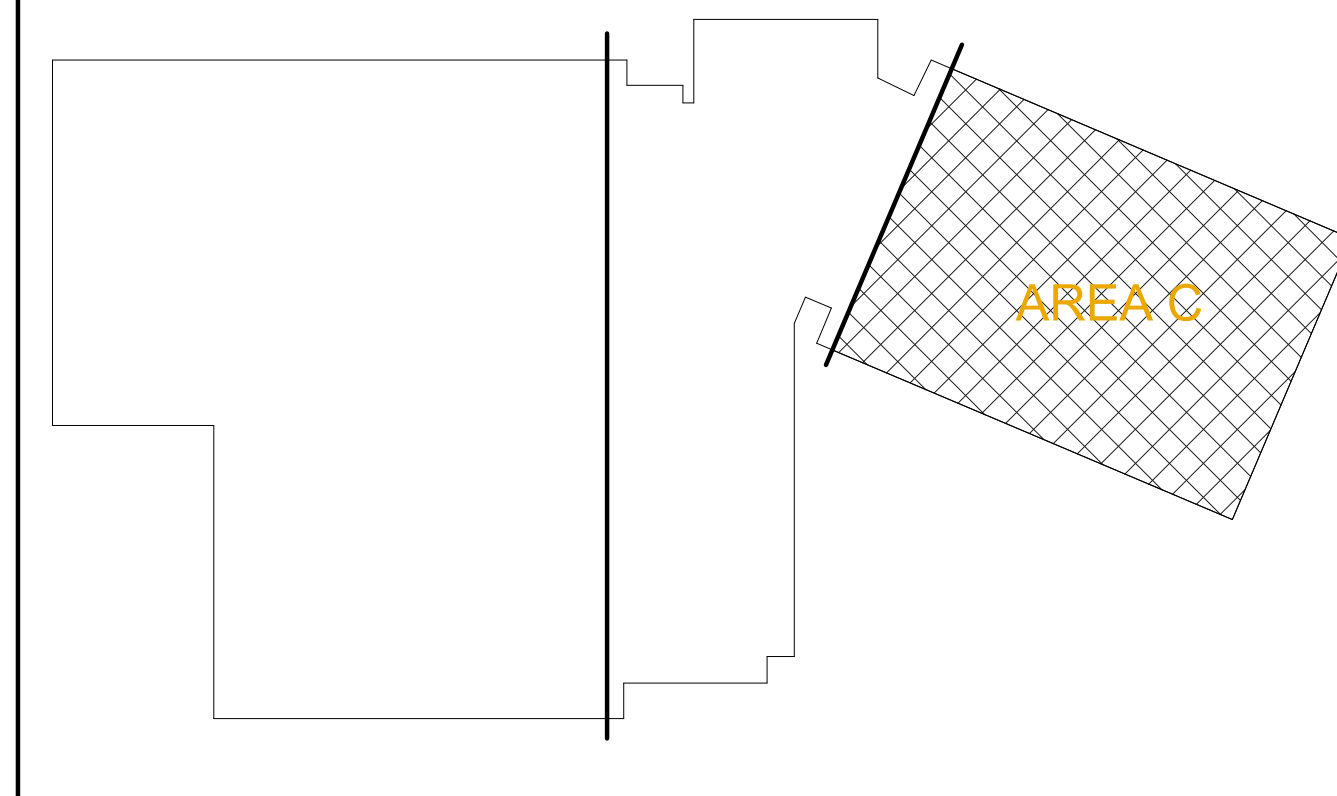
- 1) GENERAL:**
  - 1A) SEE S3 SERIES SHEETS FOR GENERAL NOTES, SYMBOLS AND ABBREVIATIONS.
  - 1B) USGS ELEVATION 214.25' - PROJECT ELEVATION 0'-0" VERIFY IN FIELD AND WITH CIVIL AND ARCHITECTURAL DRAWINGS PRIOR TO CONSTRUCTION.
  - 1C) SEE S3 SERIES SHEETS FOR TYPICAL CONCRETE DETAILS.
- 2) STEM WALLS:**
  - 2A) SEE PLAN FOR DIMENSIONED LOCATIONS OF STEM WALLS.
  - 2B) SEE 15S-300 FOR TYPICAL PENETRATIONS THROUGH STEM WALLS.
  - 2C) REINFORCING:
    - SEE 4S-301 FOR STEM WALL HORIZONTAL CORNER AND INTERSECTION REINFORCING
    - SEE 8S-302 FOR TYPICAL PLASTER REINFORCING
    - SEE 6S-302 FOR TYPICAL STEM WALL REINFORCING
- 3) SLAB-ON-GRADE:**
  - 3A) SEE DETAIL 10S-300 FOR TYPICAL SLAB-ON-GRADE SCHEDULE AND DETAIL.
  - 3B) SEE DETAIL 8S-300 FOR TYPICAL SLAB-ON-GRADE LAYOUT/INFORMATION.
  - 3C) SEE ARCH AND MECH DRAWINGS FOR SLAB SLOPES, DEPRESSIONS, FILL, PADS, AND CURBS NOT SHOWN ON THE STRUCTURAL DRAWINGS.
    - SEE 18S-300 MECHANICAL EQUIPMENT PAD DETAILS
  - 3D) SEE ARCH DRAWINGS FOR VAPOR RETARDER LOCATIONS. INSTALL VAPOR RETARDER DIRECTLY UNDER SLAB PER RECOMMENDATIONS OF FCA AND ACI 302.1R-04. TAKE PRECAUTIONS TO MINIMIZE SLAB CURLING. GRIND SLAB TO ACHIEVE SPECIFIED FLOOR FLATNESS AND LEVELNESS VALUES.
  - 3E) SLABS-ON-GRADE WITH EXTERIOR EXPOSURE, SHALL BE REINFORCED WITH EPOXY COATED (EC) REINFORCING.
  - 3F) SEE "CONCRETE NOTES" FOR JOINTING REQUIREMENTS AT SLAB-ON-GRADE.
- 4) COLUMNS/PILASTERS:**
  - 4A) ALL COLUMNS/PILASTERS ARE CENTERED ON THE INTERSECTION OF GRIDS BELOW THE SUPPORTED COLUMN UNLESS DIMENSIONED OTHERWISE ON PLAN. COLUMN LOCATIONS TO BE VERIFIED WITH PEMB AND ARCH DRAWINGS.
- 5) FOUNDATIONS:**
  - 5A) SEE DETAIL 7S-301 FOR STRIP FOOTING.
  - 5B) SEE DETAIL 2S-301 FOR SPREAD FOOTING.
  - 5C) SEE DETAIL 3S-302 FOR TIE BEAM REQUIREMENTS.
- 6) MISCELLANEOUS NOTES:**
  - 6A) SEE SHEET S-300 FOR MISCELLANEOUS CONCRETE DETAILS AND INFORMATION INCLUDING CONCRETE LAP SPlice SCHEDULE, TYPICAL HOOK DETAILS, AND CLEAR COVER REQUIREMENTS.
  - 6B) SEE DETAIL 15S-300 FOR TYPICAL REINFORCING AT WALL PENETRATIONS.
  - 6C) CONTRACTOR TO FIELD LOCATE ALL UTILITIES BELOW GRADE. CONTRACTOR SHALL NOTIFY ARCHITECT BY DIMENSIONED DRAWING OF LOCATIONS WHERE UTILITIES CONFLICT WITH FOUNDATION INSTALLATION. CONTRACTOR SHALL MAKE ALLOWANCE FOR THE RESOLUTION OF SUCH DISCOVERIES PRIOR TO PROCEEDING WITH EFFECTED FOUNDATIONS.

**PROVIDED PEMB COLUMN REACTIONS - C**

LETTER GRID	NUMBER GRID	P MAX (kips)	P MIN (kips)	V MAX (kips)	M MAX (kip-ft)
AA	A1	18	-3	12	198
	A7	18	-3	12	198
A1	A1	32	-26	20	98
	A2	14	-5	6	0
	A3	16	-9	8	0
A4	A4	25	-10	11	0
	A6	21	-11	8	0
A7	A7	29	-24	16	98
	A1	66	-22	39	349
AC	A7	62	-22	39	349
	A1	47	-15	31	268
AD	A7	47	-15	31	268
	A1	47	-15	31	268
AE	A7	47	-15	31	268
	A1	66	-17	38	335
AF	A7	61	-18	38	337

- NOTES:**
1. ALL COLUMN REACTIONS SHOWN ARE SERVICE LEVEL LOAD COMBINATIONS
  2. "V MAX" AND "M MAX" FORCES ARE ANTICIPATED TO ACT IN THE STRONG AXIS OF THE COLUMNS UNLESS NOTED OTHERWISE

**KEY PLAN**



City of West Memphis

**DRAWING ISSUE**

NO.	DATE	DESCRIPTION

**ARCHITECT**

**PROJECT LUONG**  
 HOUSTON +1-940-708-8041  
 SAN ANTONIO +1-720-246-1378  
 SANTA MONICA +1-310-394-7200  
 6200 Gessner Rd., Suite 775, Houston, TX 77054  
 700 N. St. Marys St., Suite 1400, San Antonio, TX 78205  
 730 Arizona Ave., Santa Monica, CA 90401  
 ProjectLuong.com

**CONSULTANT**

**MARTIN/MARTIN**  
 CONSULTANTS  
 13399 West Colfax Avenue, Lakewood, Colorado 80215  
 303.433.4100 martinm.com

**JOB INFO**

**West Memphis Rec Center**  
 RECREATION CENTER  
 ST HWY 191/40 SERV.  
 West Memphis, AR 72301

MM JOB No.: 26.0149.S.01

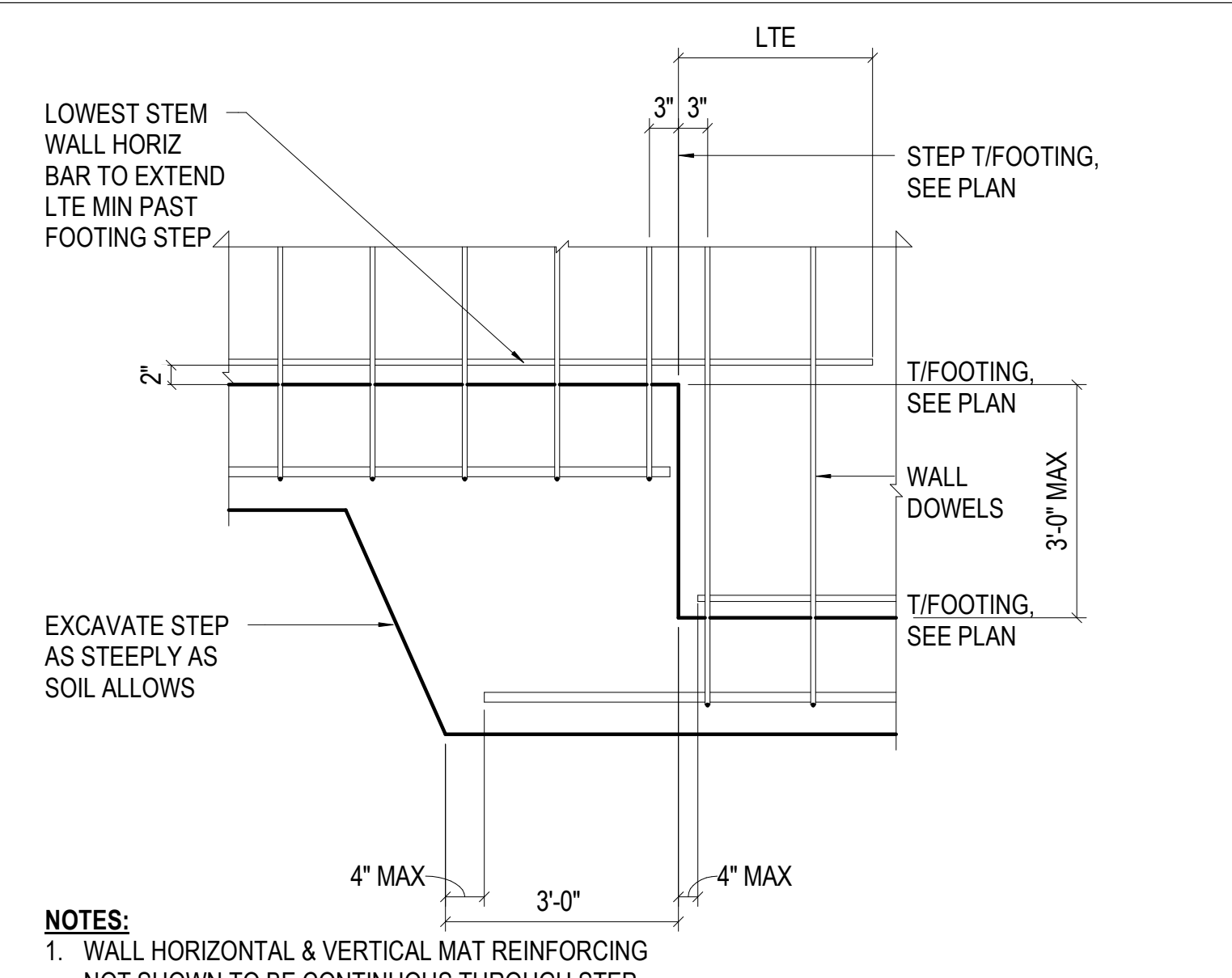
SHEET TITLE

FOUNDATION PLAN - SECTOR C

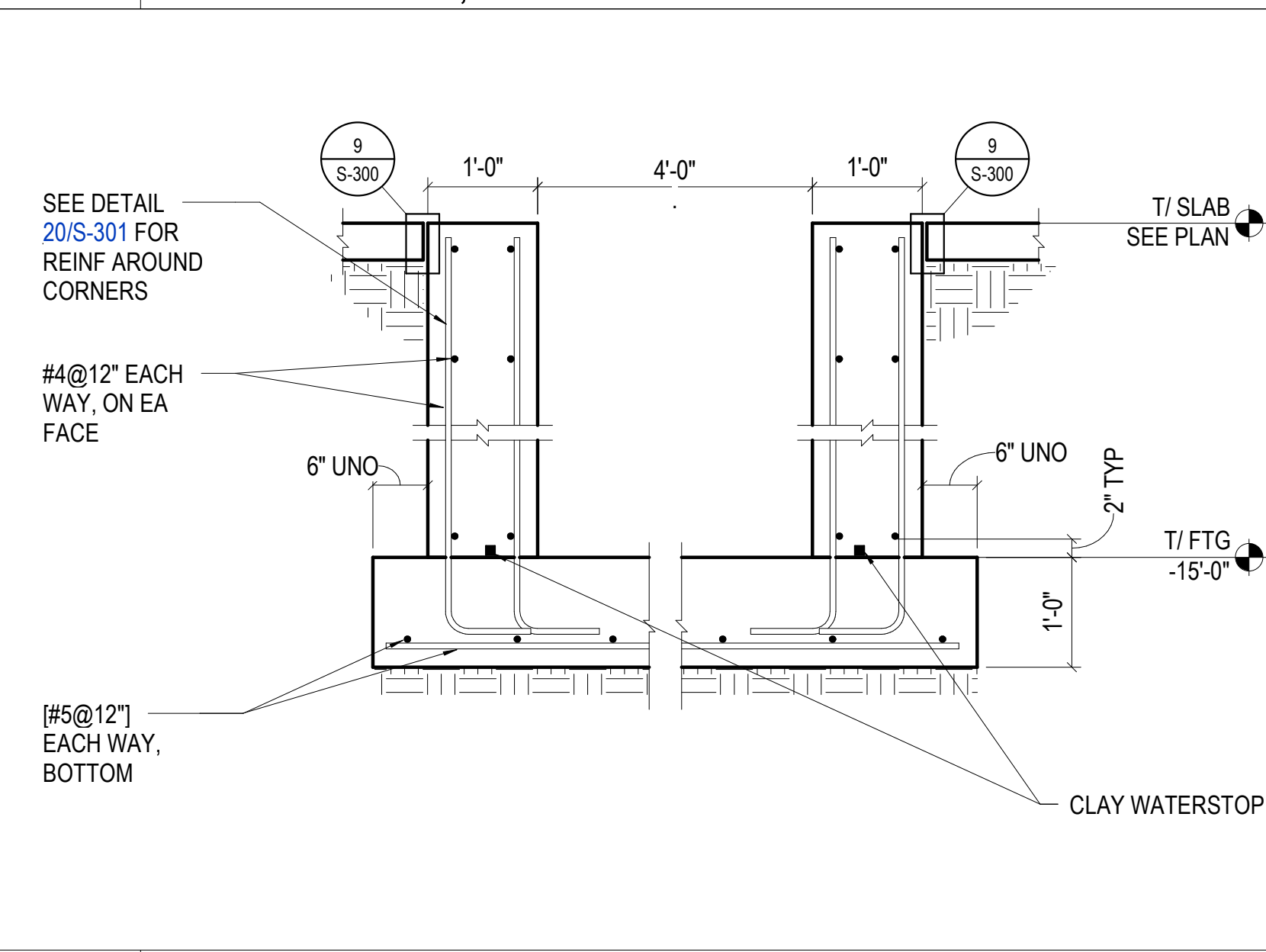
SHEET NUMBER

**S-204**

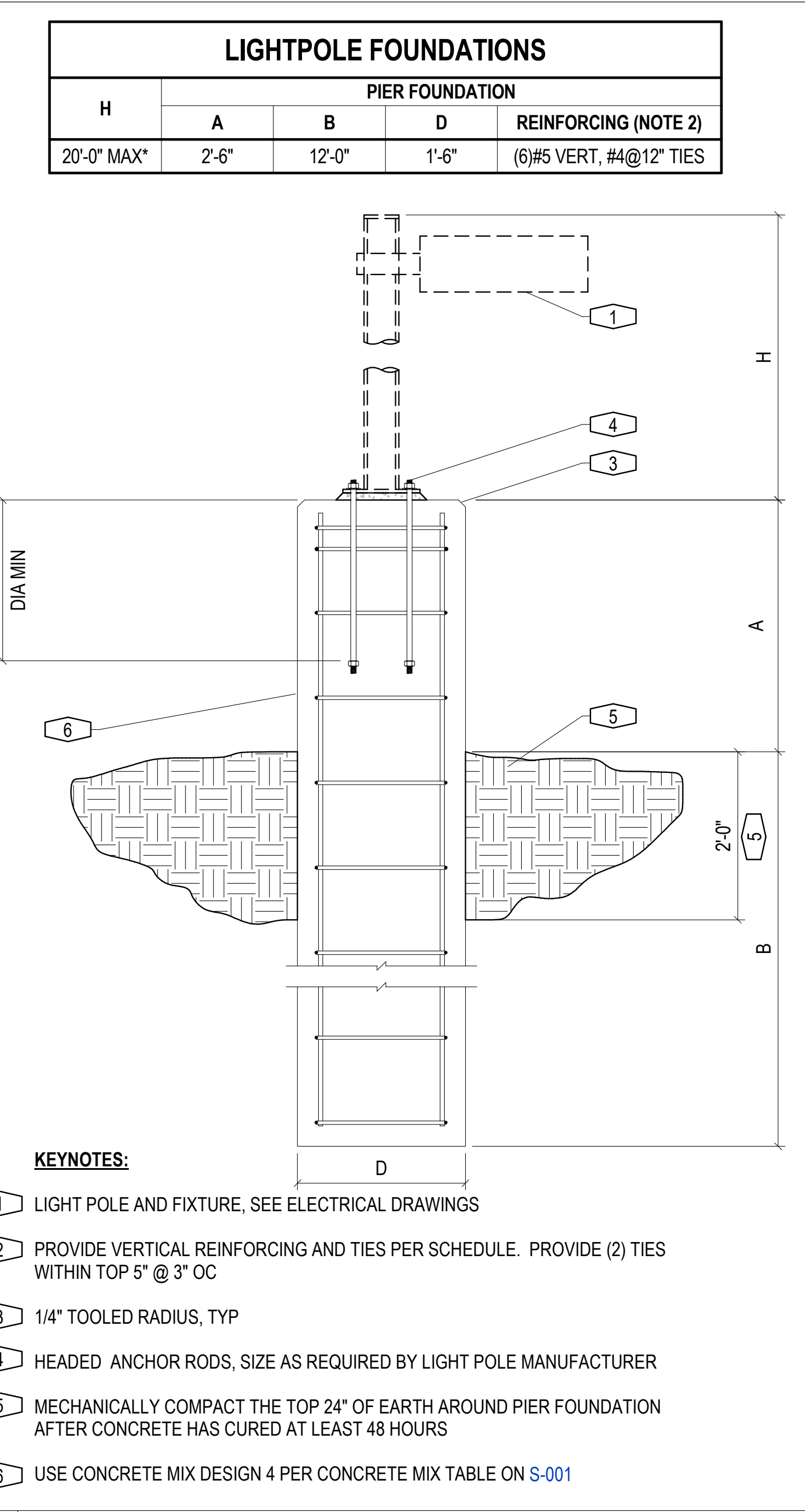




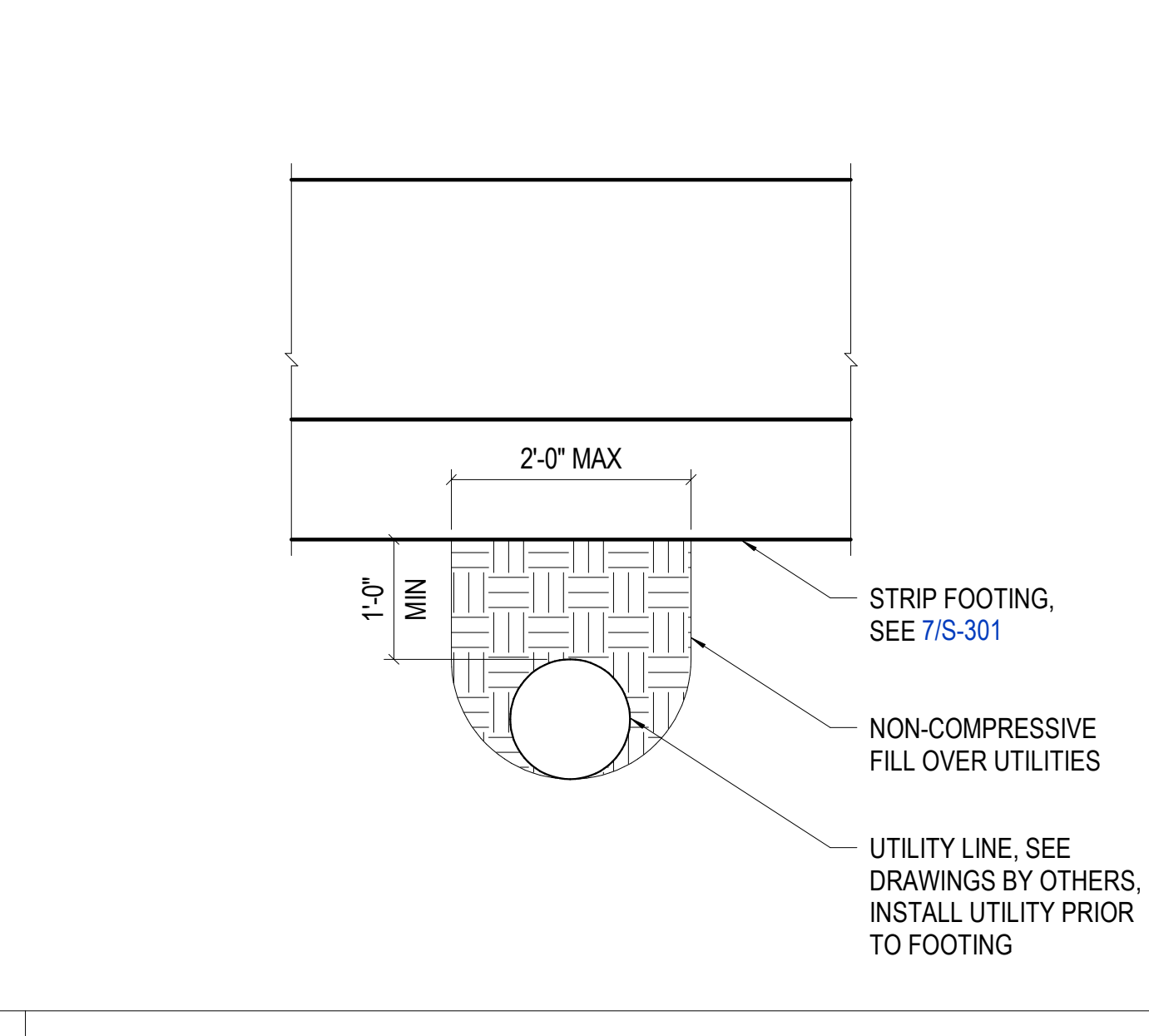
**16** 3/4" = 1'-0" STRIP FOOTING W/ CIP STEM WALL STEP, 3'-0" AND LESS



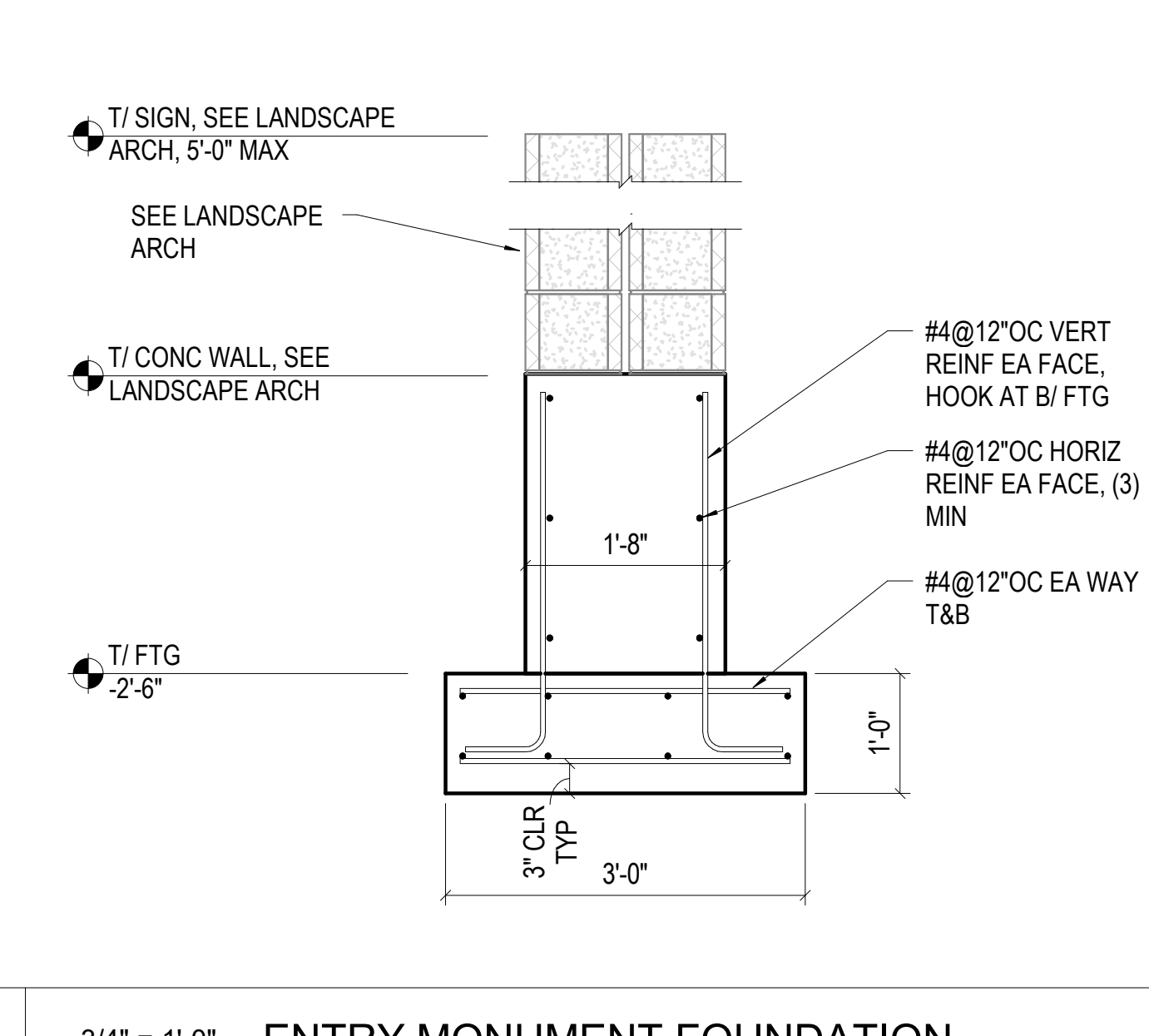
**17** 3/4" = 1'-0" MECHANICAL PIT



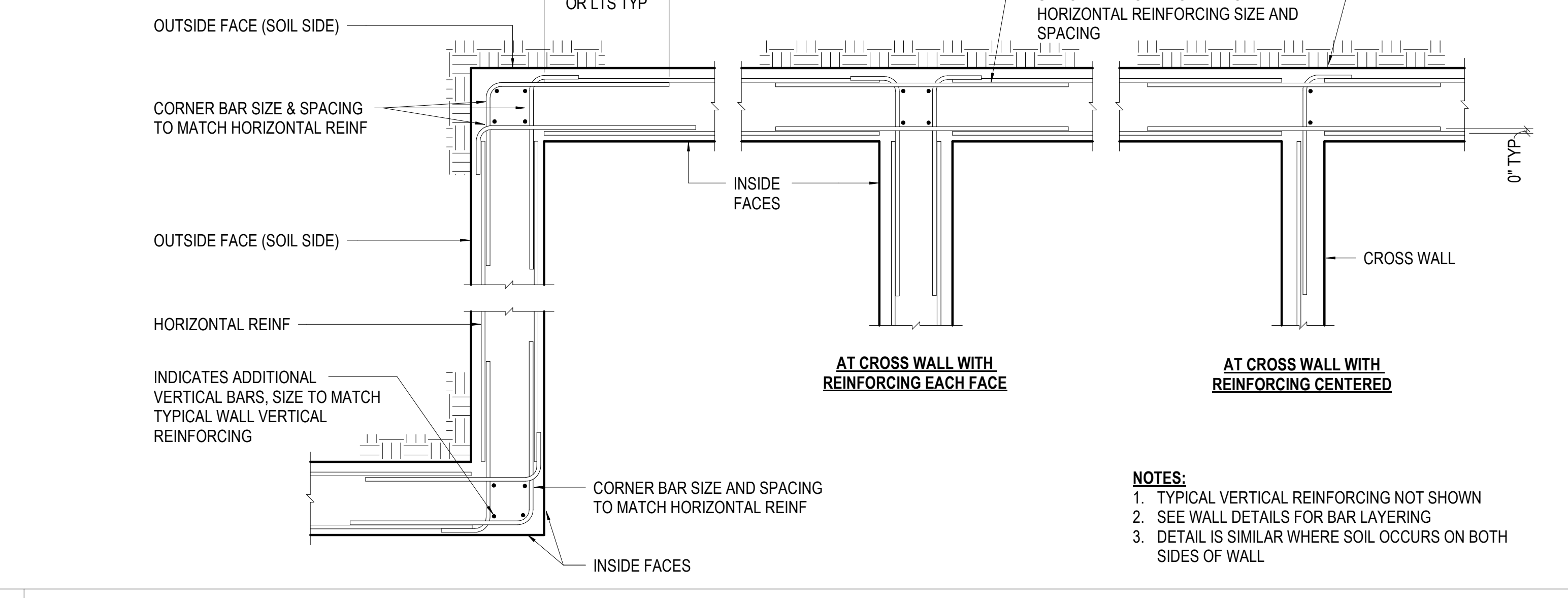
**12** NO SCALE TYP SITE LIGHT POLE BASE



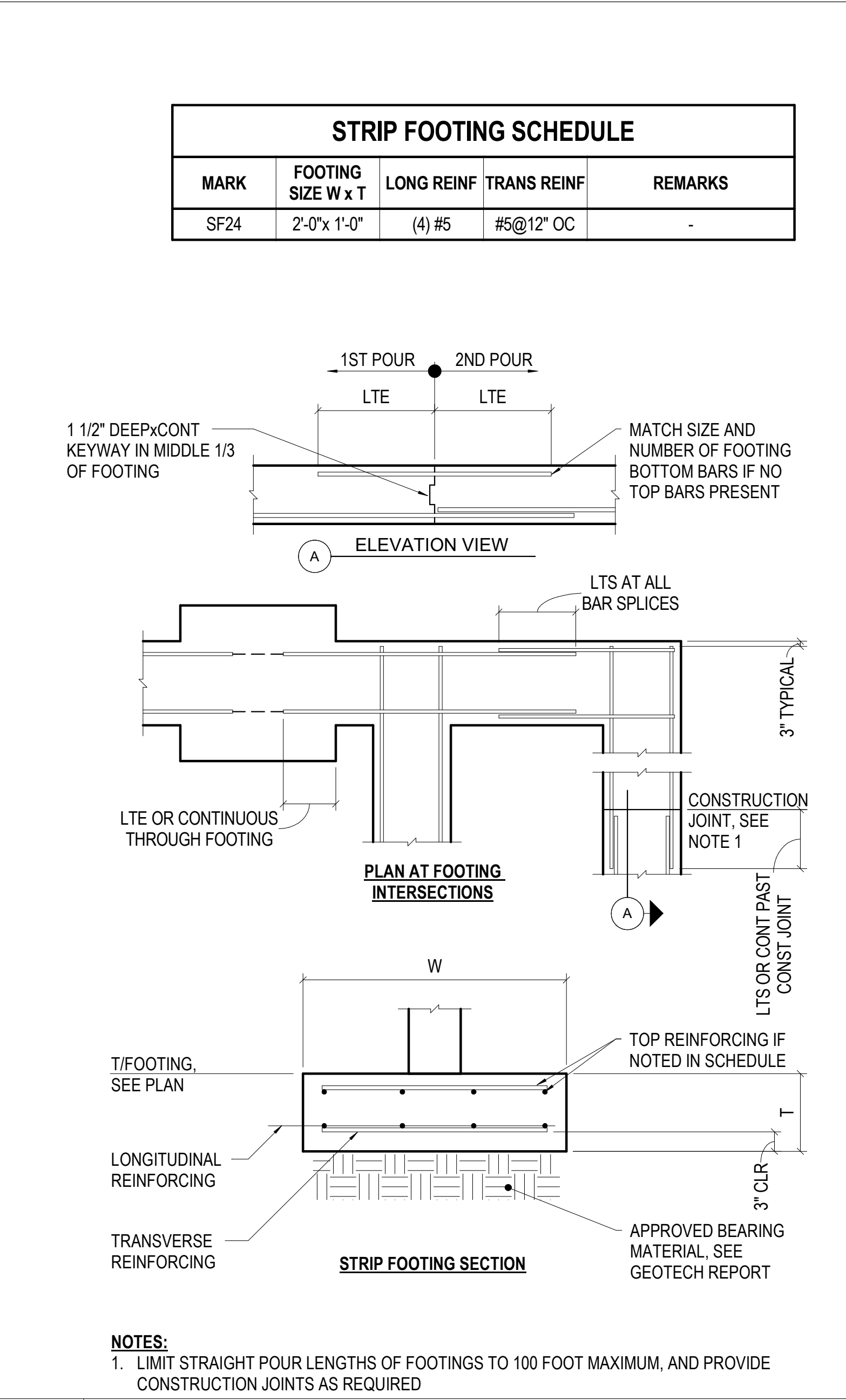
**13** NO SCALE UTILITY BELOW STRIP FOOTING



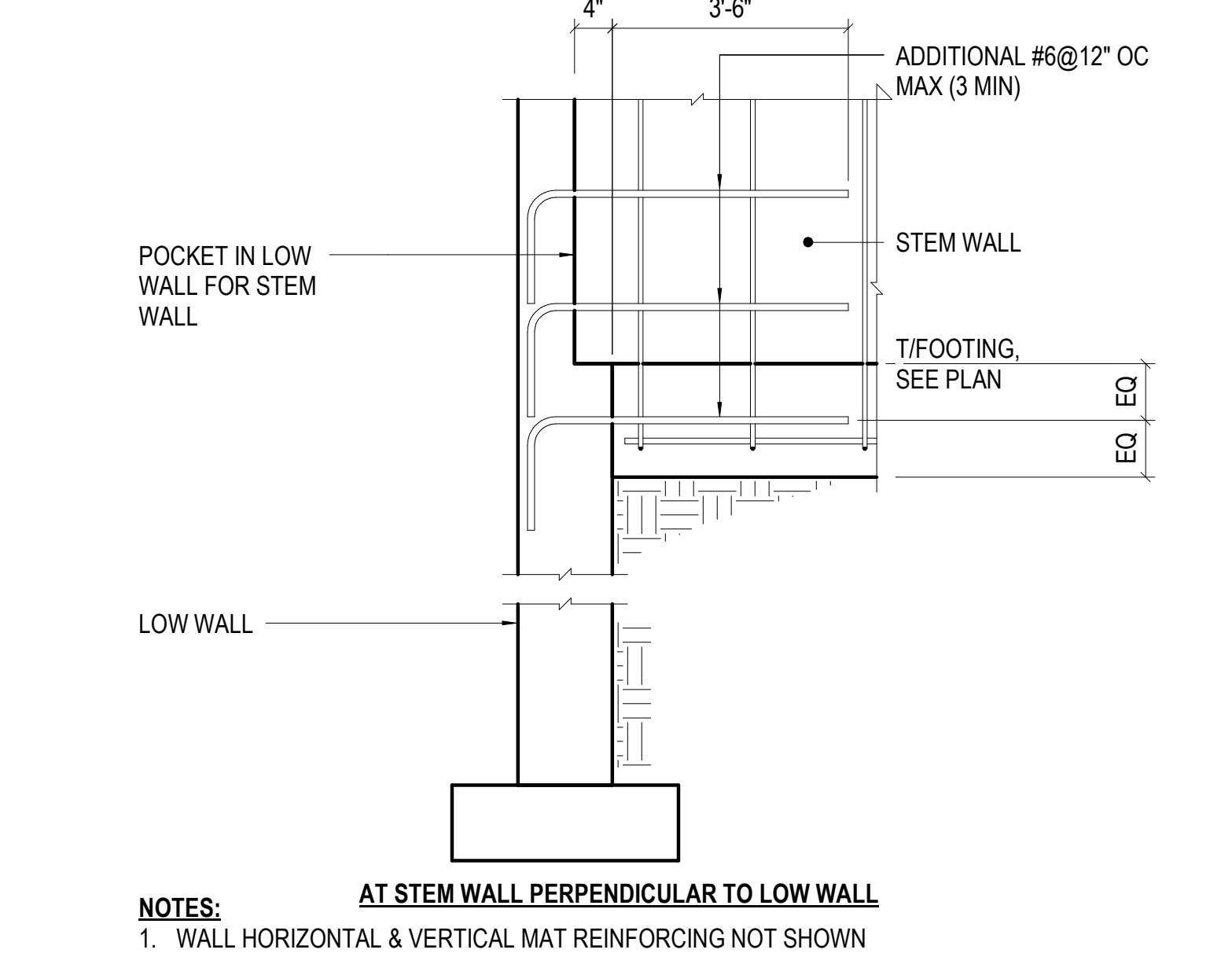
**14** 3/4" = 1'-0" ENTRY MONUMENT FOUNDATION



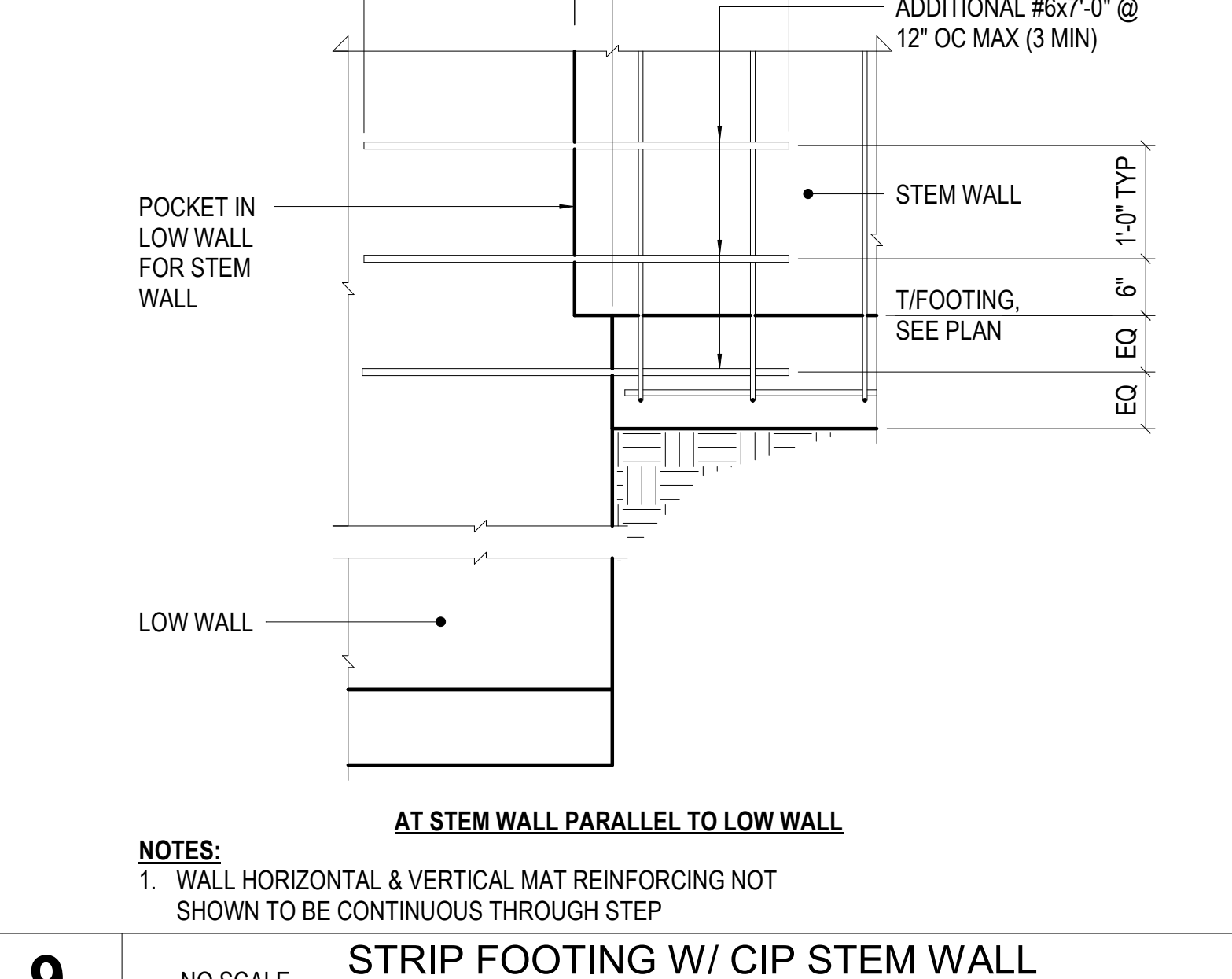
**20** NO SCALE TYPICAL HORIZONTAL REINFORCING AT RETAINING



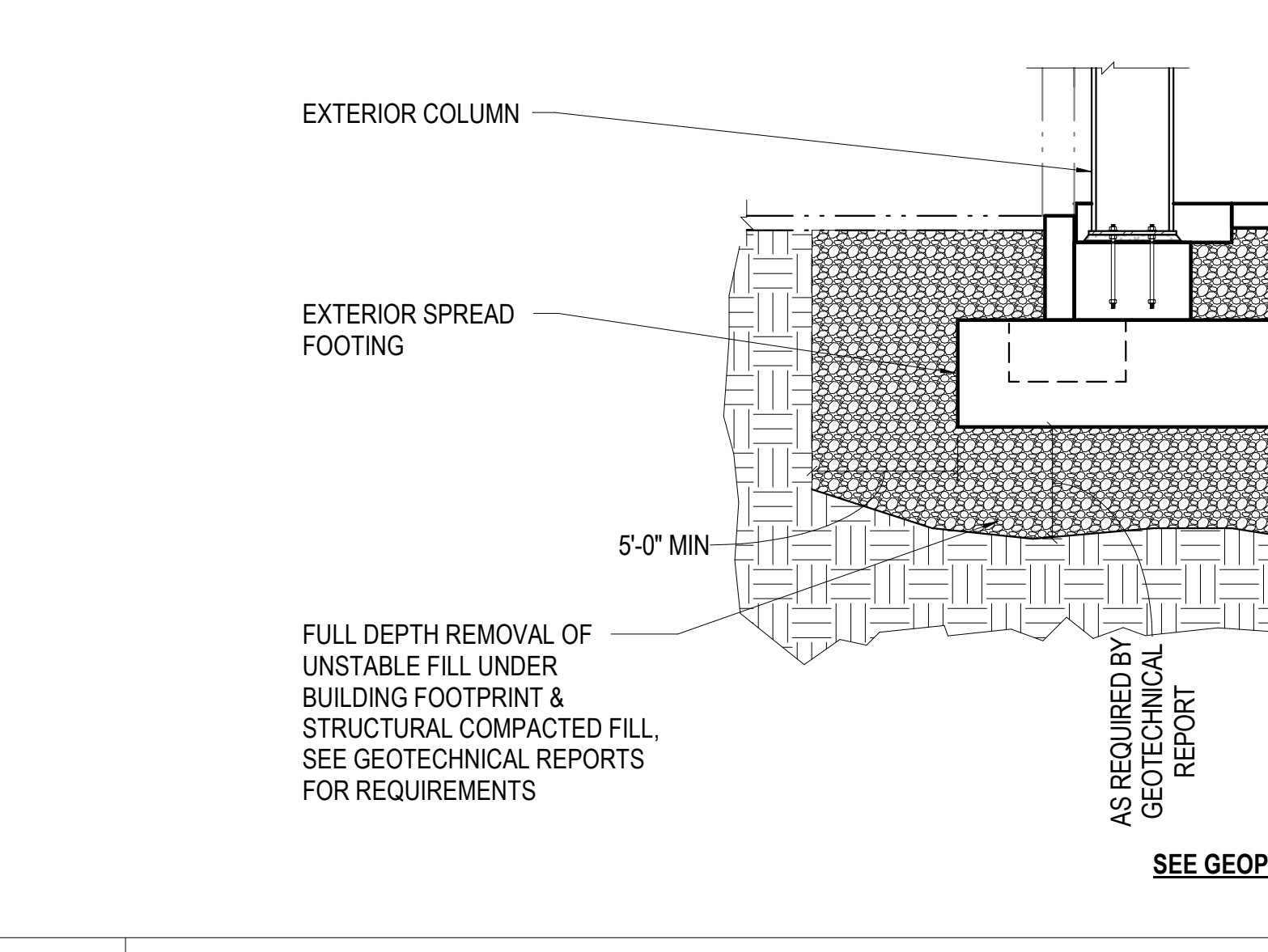
**7** 3/4" = 1'-0" TYP STRIP FOOTING



**9** NO SCALE STRIP FOOTING W/ CIP STEM WALL STEP, GREATER THAN 3'-0"

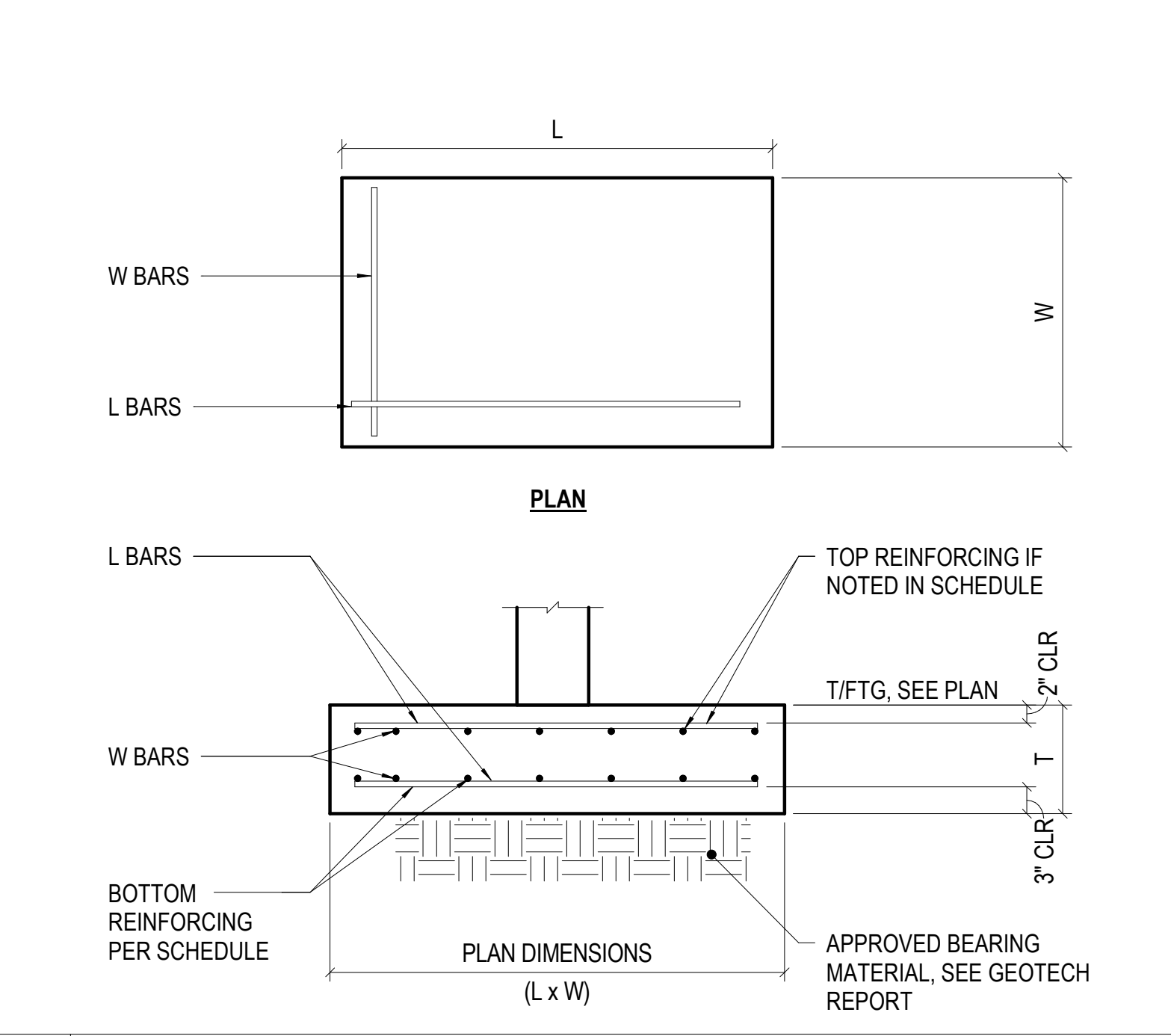


**9** NO SCALE STRIP FOOTING W/ CIP STEM WALL STEP, GREATER THAN 3'-0"

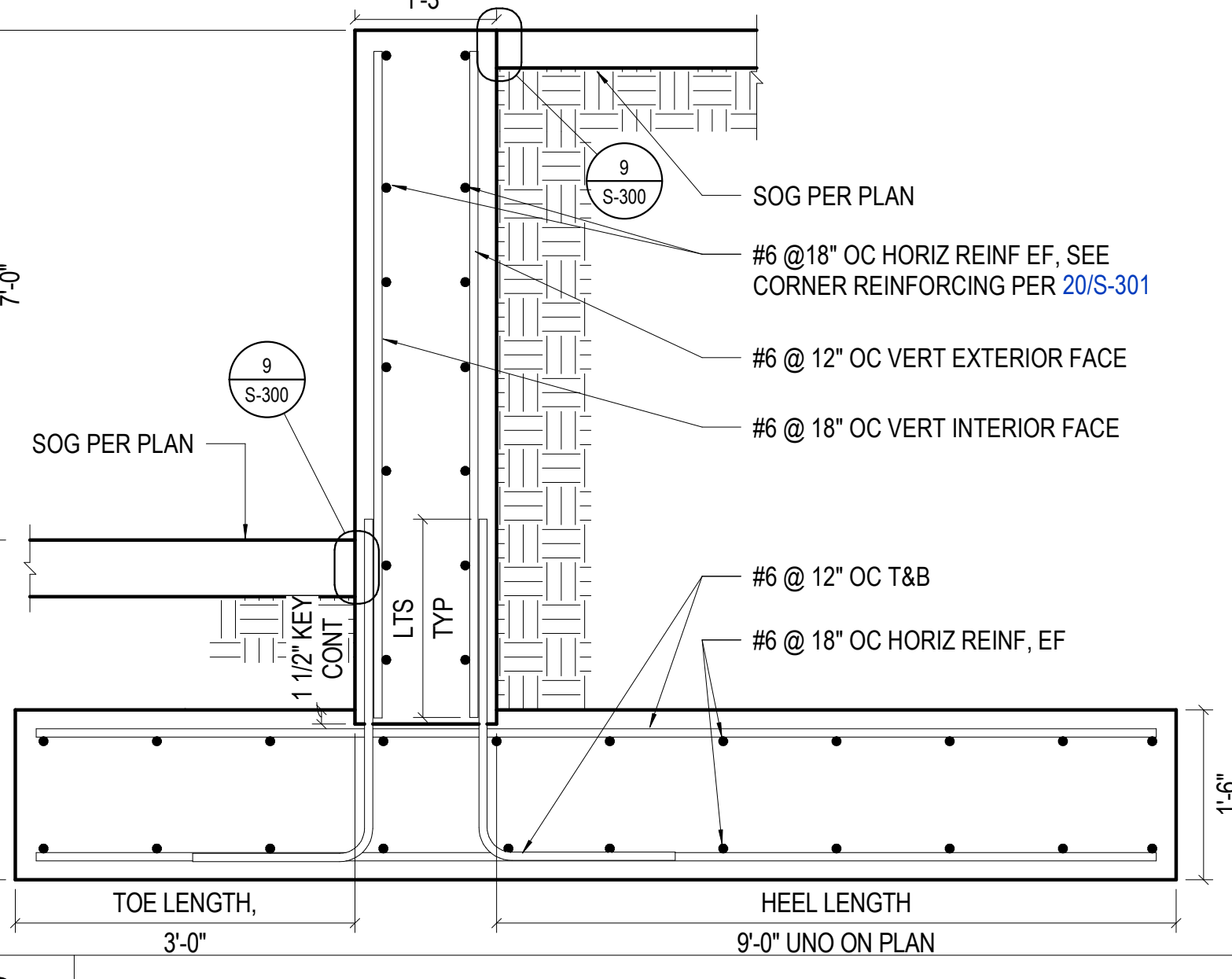


**10** NO SCALE FOUNDATION/SOIL PREPARATION OPTIONS

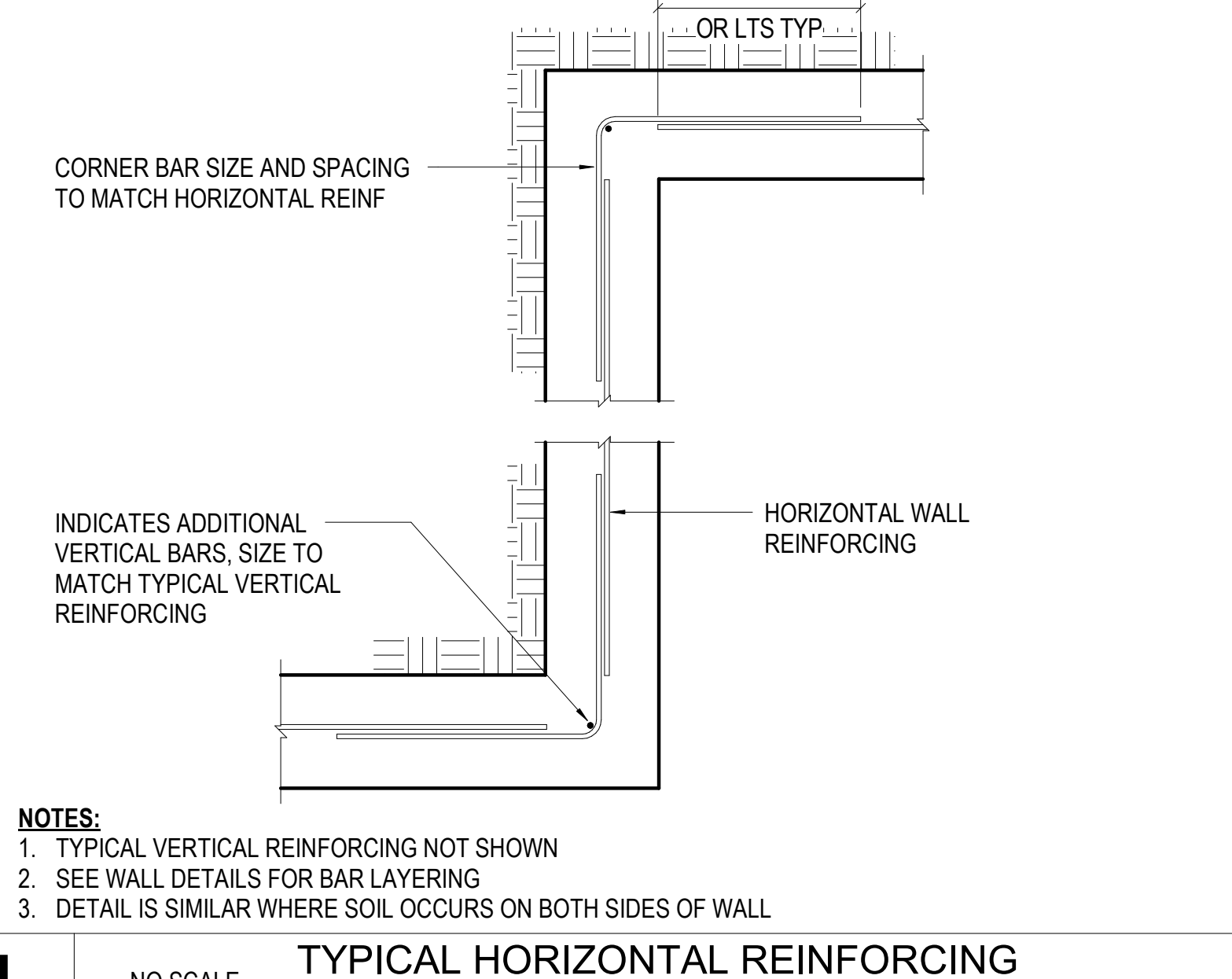
SPREAD FOOTING SCHEDULE			
MARK	FOOTING SIZE L x W x T	REINFORCING	REMARKS
F4x4	4'-0"x4'-0"x1'-3"	(5) #5 EW BOT	-
F5x5	5'-0"x5'-0"x1'-5"	(6) #6 EW BOT	-
F6x6	6'-0"x6'-0"x1'-8"	(9) #6 EW BOT	-
F7x7	7'-0"x7'-0"x2'-0"	(10) #6 EW BOT	-
F8x8	8'-0"x8'-0"x2'-3"	(11) #7 EW BOT	-
F8x14	8'-0"x14'-0"x2'-3"	#7 @ 10" OC EW BOT	-
F9x9A	9'-0"x9'-0"x2'-6"	(11) #6 EW T&B	-
F9.5x11	9'-5"x11'-0"x2'-6"	#8 @ 12" OC EW T&B	-
F11x11	11'-0"x11'-0"x3'-1"	(15) #8 EW BOT	-
F11x11A	11'-0"x11'-0"x3'-1"	(15) #8 EW T&B	-
F12x12	12'-0"x12'-0"x3'-3"	(18) #8 EW BOT	-
F12x12A	12'-0"x12'-0"x3'-3"	(18) #8 EW T&B	-
F12x22	12'-0"x22'-0"x3'-3"	#8 @ 11" OC EW T&B	-
F13x13A	13'-0"x13'-0"x3'-4"	(15) #9 EW T&B	-
F14x14	14'-0"x14'-0"x3'-6"	(16) #9 EW BOT	-
F14x21	14'-0"x21'-0"x3'-6"	#9 @ 12" OC EW BOT	-



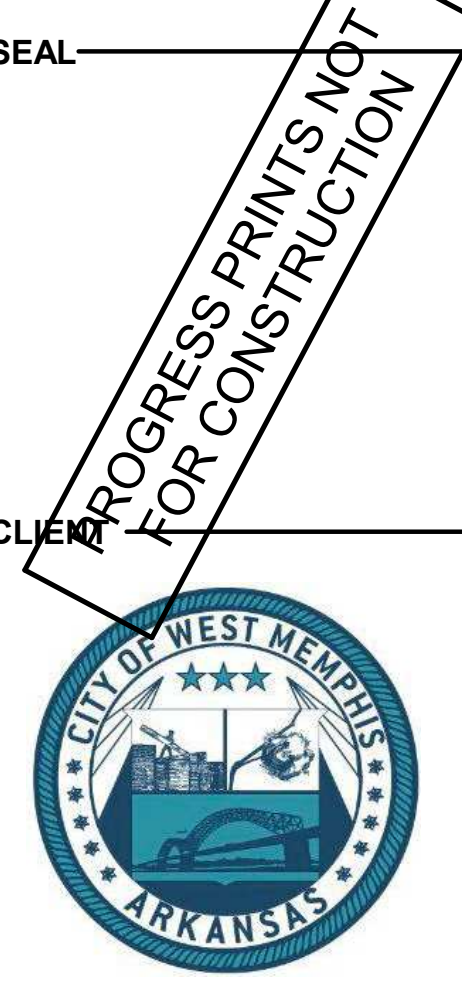
**2** 3/4" = 1'-0" TYP SPREAD FOOTING



**3** NO SCALE RETAINING WALL



**4** NO SCALE TYPICAL HORIZONTAL REINFORCING AT FOUNDATION WALLS



City of West Memphis

DRAWING ISSUE

NO.	DATE	REVISION
1		
2		
3		
4		
5		
6		
7		
8		
9		
10		
11		
12		
13		
14		
15		
16		
17		
18		
19		
20		

ARCHITECT

**PROJECT LUONG**  
 HOUSTON +1-347-708-8041  
 SAN ANTONIO +1-726-246-1378  
 SANTA MONICA +1-313-394-7280  
 600 Gessner Rd., Suite 775, Houston, TX 77064  
 700 N. St. Marys St., Suite 1400, San Antonio, TX 78205  
 730 Arizona Ave., Santa Monica, CA 90401  
 ProjectLuong.com

**MARTIN/MARTIN**  
 CONSULTANT  
 1339 West Colfax Avenue, Lakewood, Colorado 80215  
 303.442.4100

JOB INFO

**West Memphis Rec Center**  
 RECREATION CENTER  
 ST HWY 191/40 SERV.  
 West Memphis, AR 72301

MM JOB No.: 26.0149.S.01

SHEET TITLE

TYPICAL FOUNDATION DETAILS

SHEET NUMBER

S-301

DESIGNERS: ENR DESIGNERS NEW ORLEANS  
 LEAD PROJECT: DAN DONNEY  
 PROJECT MANAGER: ABE CHEN  
 MAJOR: REBAR/OT  
 PROJECT: BR/DOONEY  
 FILE PATH: \\chicken\cbs\cityofwestmemphis\recreation\center\26.0149.S.01\WEST MEMPHIS REC CENTER.SVD

