

**PLUMBING FIXTURE**

ID	MANUFACTURER & MODEL	BASIS OF DESIGN	ACCESSORIES	COLD	HOT	WASTE	INDIRECT	VENT	TRAP	SPECIFICATION
WASH BAY PIT WITH GRATE	BUILT ON SITE.	H20 TRAFFIC RATED STEEL GRATE, CUSTOM, 4'X4'X20' SECTIONAL								CONCRETE TRENCH, NO SLOPE, 4' WIDE x 4' DEEP x 20' LONG, 4" PIPE OUTLET, PIPE OUTLET AT 12" BELOW TOP OF PIT. EXTRA HEAVY DUTY H20 TRAFFIC RATED STEEL GRATE WITH STEEL FRAME..
PW-1	RAMTEQ, #BVO500-60	(X2) 36" WASH WAND #265-00001-01, (X2) ST-1500 SPRAY GUN #275-00001-01, (X2) 3/8" BLACK RUBBER HOSE W/QUICK CONNECTS #284-00001-01, (X2) LEONARD VALVE HEAVY DUTY HOSE RACKS #HDHR, (X2) STAINLESS STEEL WAND HOLDERS #CWS-WH5000,		2'	2'	---	---	---		OWNER FURNISHED/CONTRACTOR INSTALLED.

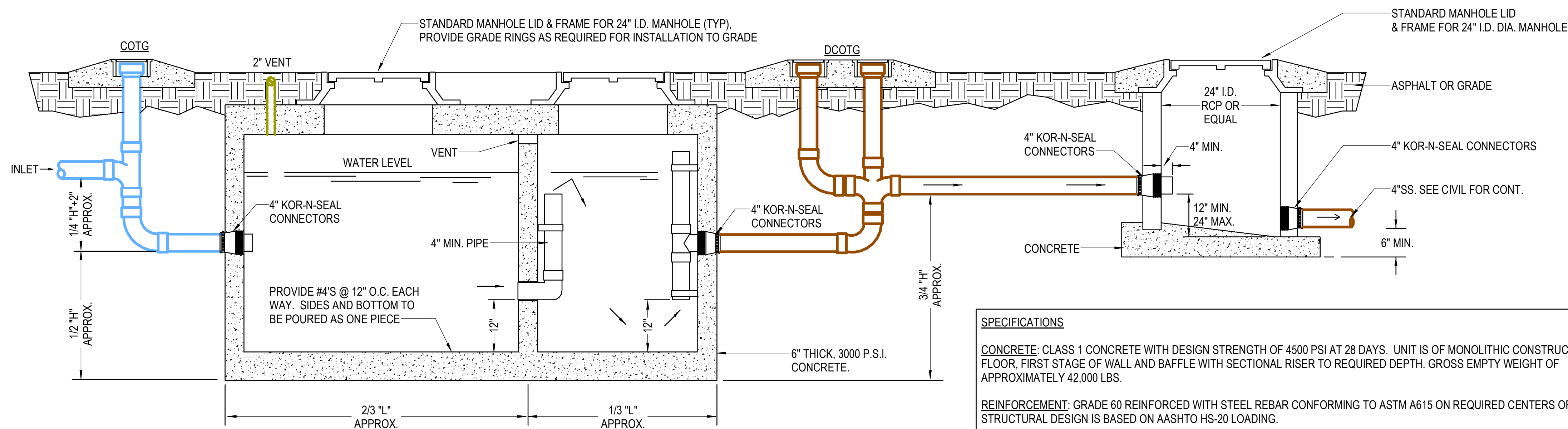
**PLUMBING ACCESSORY**

ID	BASIS OF DESIGN	UTILITY CONNECTION	SPECIFICATION
RPZA-1	WILKINS / ZURN, 975XLST	2" CW	REDUCED PRESSURE ZONE BACKFLOW PREVENTER SHALL BE CERTIFIED TO NSF/ANSI 372. SHALL BE ASSE® LISTED 1013, RATED TO 180° F AND SUPPLIED WITH FULL PORT BALL VALVES. THE MAIN BODY AND ACCESS COVERS SHALL BE STAINLESS STEEL (ASTM A 351), THE SEAT RING AND ALL INTERNAL POLYMERS SHALL BE NORYL™ AND THE SEAT DISC ELASTOMERS SHALL BE SILICONE. THE CHECKS SHALL BE ORIENTED AT A 45° ANGLE UPWARD AND ACCESSIBLE FOR MAINTENANCE WITHOUT REMOVING THE RELIEF VALVE OR THE ENTIRE DEVICE FROM THE LINE. SUPPLIED WITH AN AIR GAP AND "Y" TYPE STRAINER. THE REDUCED PRESSURE PRINCIPLE BACKFLOW PREVENTER SHALL BE A ZURN WILKINS MODEL 975XLST
COTG	WADE, 6000-12 SERIES	SAME SIZE AS LINE, MAX 4"	CLEANOUT-TO-GRADE/DOUBLE-CLEANOUT-TO-GRADE - SAME SIZE AS LINE, MAX. 4", HEAVY DUTY CAST IRON, FERRULE, THREADED ADJUSTABLE HOUSING, INTEGRAL CLAMPING COLLAR, ABS PLUG, 6-3/4" DIA ROUND HEAVY DUTY DUCTILE IRON TOP
DCOTG	WADE, 6000-12 SERIES	SAME SIZE AS LINE, MAX 4"	CLEANOUT-TO-GRADE/DOUBLE-CLEANOUT-TO-GRADE - SAME SIZE AS LINE, MAX. 4 INCH, HEAVY DUTY CAST IRON, FERRULE, THREADED ADJUSTABLE HOUSING, INTEGRAL CLAMPING COLLAR, ABS PLUG, 7-1/8 INCH SQUARE HEAVY DUTY DUCTILE IRON TOP
OIL SEPARATOR-1	PETERSON CONCRETE TANK CO., 1000 GALLON OIL INTERCEPTOR	4" SS, 4" GW, 2" V	OIL INTERCEPTOR - 1000 GALLON LIQUID CAPACITY, PRECAST REINFORCED CONCRETE, H20 LOAD CAPACITY DESIGN AND 4500 PSI COMPRESSIVE STRENGTH @ 28 DAYS WITH ONE INTERNAL BAFFLE, 2 CHAMBER TYPE, PROVIDE (QTY 2) 24" DIA. STEEL MANHOLE COVERS, W/ H20 LOAD CAPACITY, PROVIDE EXTENSIONS AS REQUIRED TO BE FLUSH WITH GRADE.

**WATER HAMMER ARRESTOR**

P.D.I. UNITS	A	B	C	D	E	F
FIXTURE UNITS	1-11	12-32	33-60	61-113	114-154	155-330

WADE "SHOKSTOP" #4481 SERIES WATER HAMMER ARRESTOR, SEAMLESS COPPER CONSTRUCTION, POLYPROPYLENE PISTON, (2) EPDM ORINGS, MNPT CONNECTION, MAX. PRESS. 350 PSI, MAX. TEMP. 250° F, PROVIDE PROPERLY SIZED WATER HAMMER ARRESTORS AND LOCATE ON PIPING IMMEDIATELY UPSTREAM OF ALL QUICK CLOSING VLAVES (E.G. FLUSH VLAVES, DISHWASHER, ICE MAKERS, SOLENOID VALVES, ETC.)



**SPECIFICATIONS**

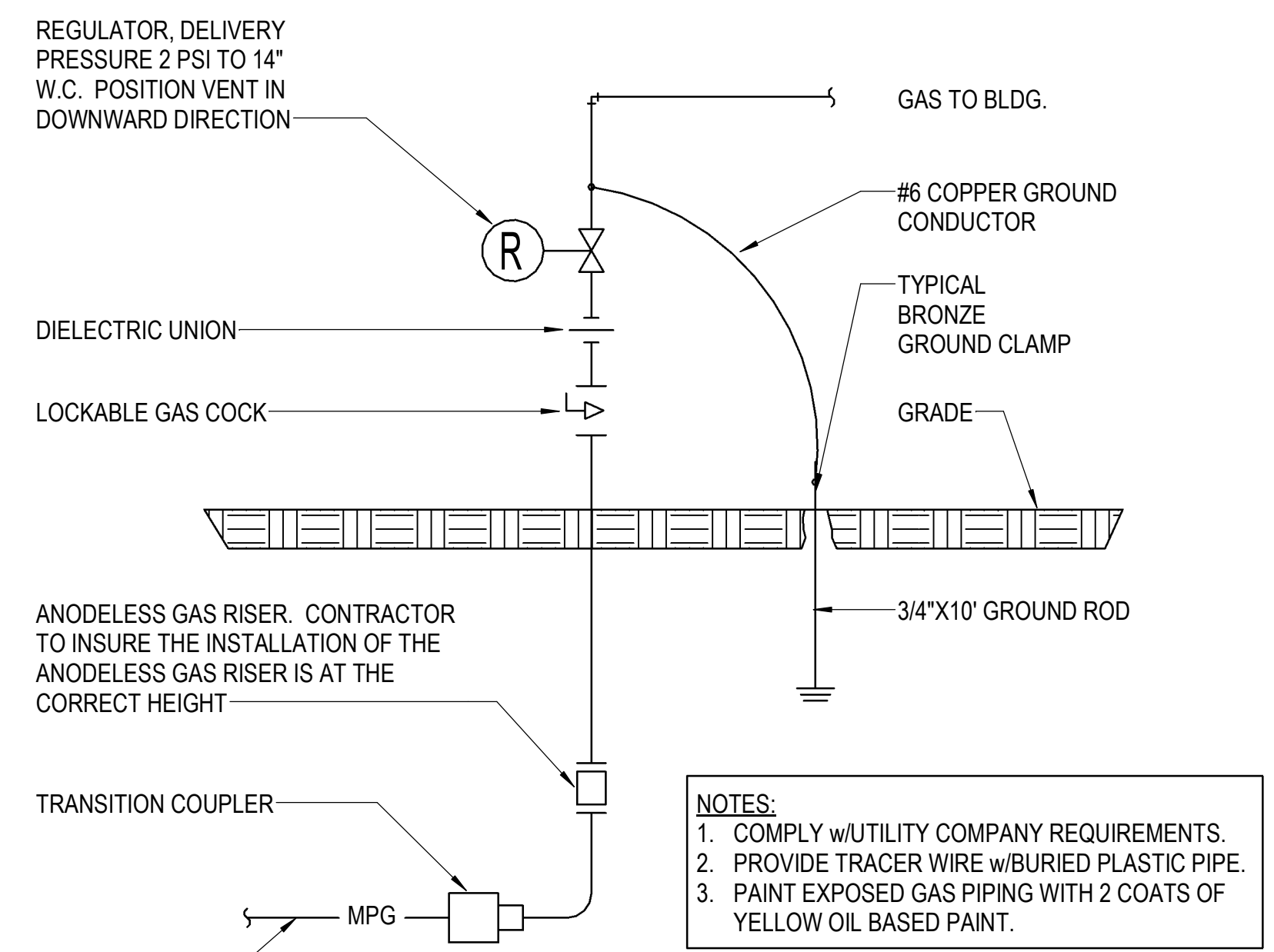
**CONCRETE:** CLASS 1 CONCRETE WITH DESIGN STRENGTH OF 4500 PSI AT 28 DAYS. UNIT IS OF MONOLITHIC CONSTRUCTION AT FLOOR, FIRST STAGE OF WALL AND BAFFLE WITH SECTIONAL RISER TO REQUIRED DEPTH. GROSS EMPTY WEIGHT OF APPROXIMATELY 42,000 LBS.

**REINFORCEMENT:** GRADE 60 REINFORCED WITH STEEL REBAR CONFORMING TO ASTM A615 ON REQUIRED CENTERS OR EQUAL. STRUCTURAL DESIGN IS BASED ON AASHTO HS-20 LOADING.

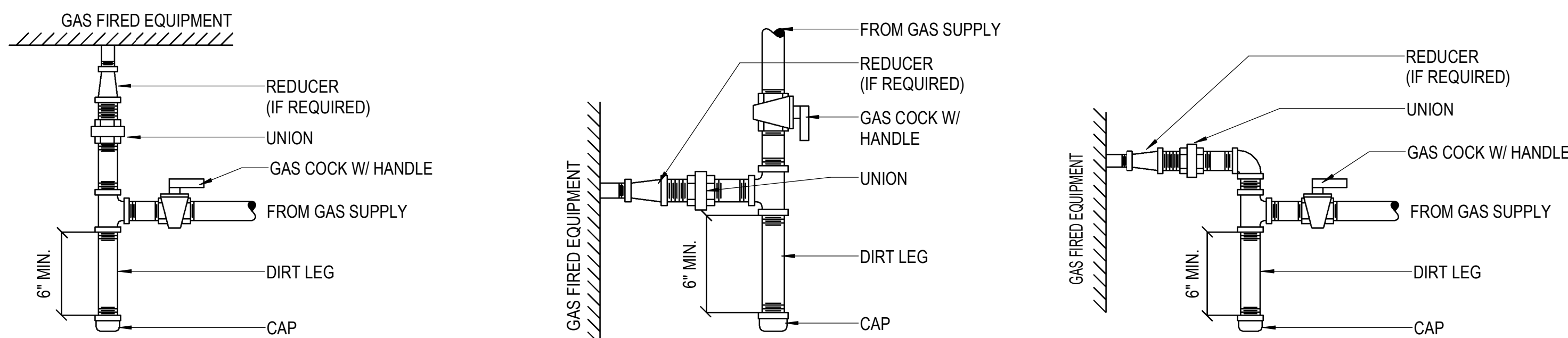
**MATERIALS:** MANHOLE FRAMES, COVERS OR GRATES ARE MANUFACTURED OF GREY CAST IRON CONFORMING TO ASTM A48-76 CLASS 30. MANHOLE SHALL HAVE 24 INCH INSIDE DIAMETER AND BE TRAFFIC DUTY.

**ENGINEERING DATA:** INTERCEPTOR IS STRUCTURALLY AND HYDRAULICALLY ENGINEERED CONFORMING TO UNIFORM PLUMBING CODE. NOMINAL LIQUID CAPACITY IS 5,000 GALLONS WITH SPILL CAPACITY OF 2,500 GALLONS. MAXIMUM FLOW RATE OF 500 GPM. MANUFACTURER TO PROVIDE STRUCTURAL DRAWINGS & BUOYANCY CALCULATIONS CERTIFIED BY A LICENSED ENGINEER. FIELD EXCAVATION AND PREPARATION SHALL BE COMPLETED PRIOR TO DELIVERY OF INTERCEPTOR. USE DIMENSIONAL DATA AS SHOWN.

1 STANDARD OIL INTERCEPTOR W/ SAMPLE PORT MANHOLE  
 NOT TO SCALE



2 NATURAL GAS SERVICE ENTRY  
 NOT TO SCALE



3 TYPICAL GAS PIPING CONNECTIONS  
 NOT TO SCALE

Design Phase \_\_\_\_\_

**CONSTRUCTION DOCUMENTS**

Revisions

No.	Date	Description
1	10-09-2024	ADD 001
2	11-05-2024	ADD 002

Stamp

Notes

- CROMWELL ARCHITECTS ENGINEERS, INC. ALL RIGHTS RESERVED
- THIS SHEET DESIGNED FOR COLOR PRINTING. CRITICAL INFORMATION MAY BE LOST WITH BLACK AND WHITE PRINTING.

Project Number \_\_\_\_\_ 2023-249  
 Issue Date \_\_\_\_\_ 09-23-2024  
 Sheet Title \_\_\_\_\_