

Design Phase
CONSTRUCTION DOCUMENTS

Revisions	No.	Date	Description
	1	10-09-2024	ADD 01
	2	11-05-2024	ADD 02

Stamp

Notes

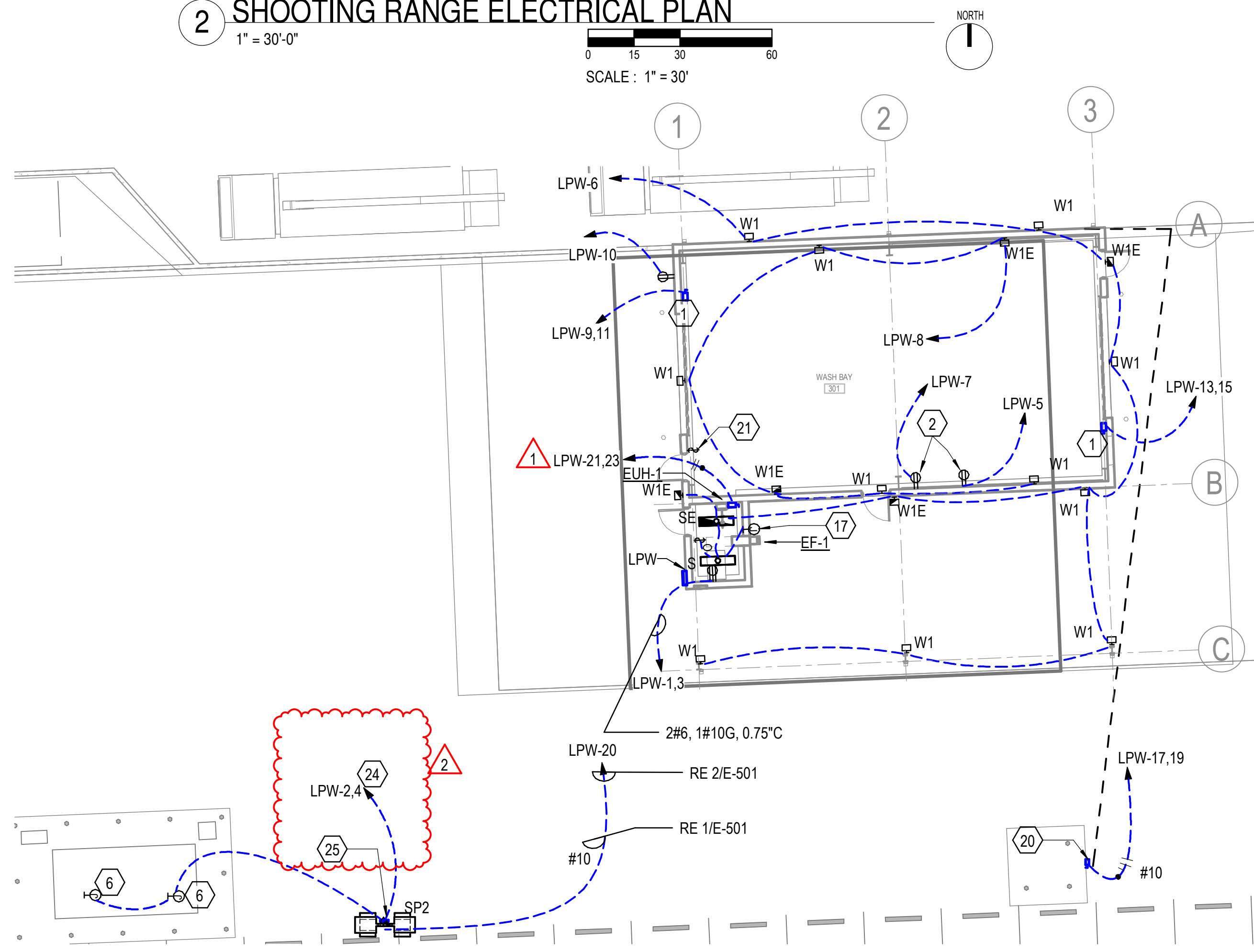
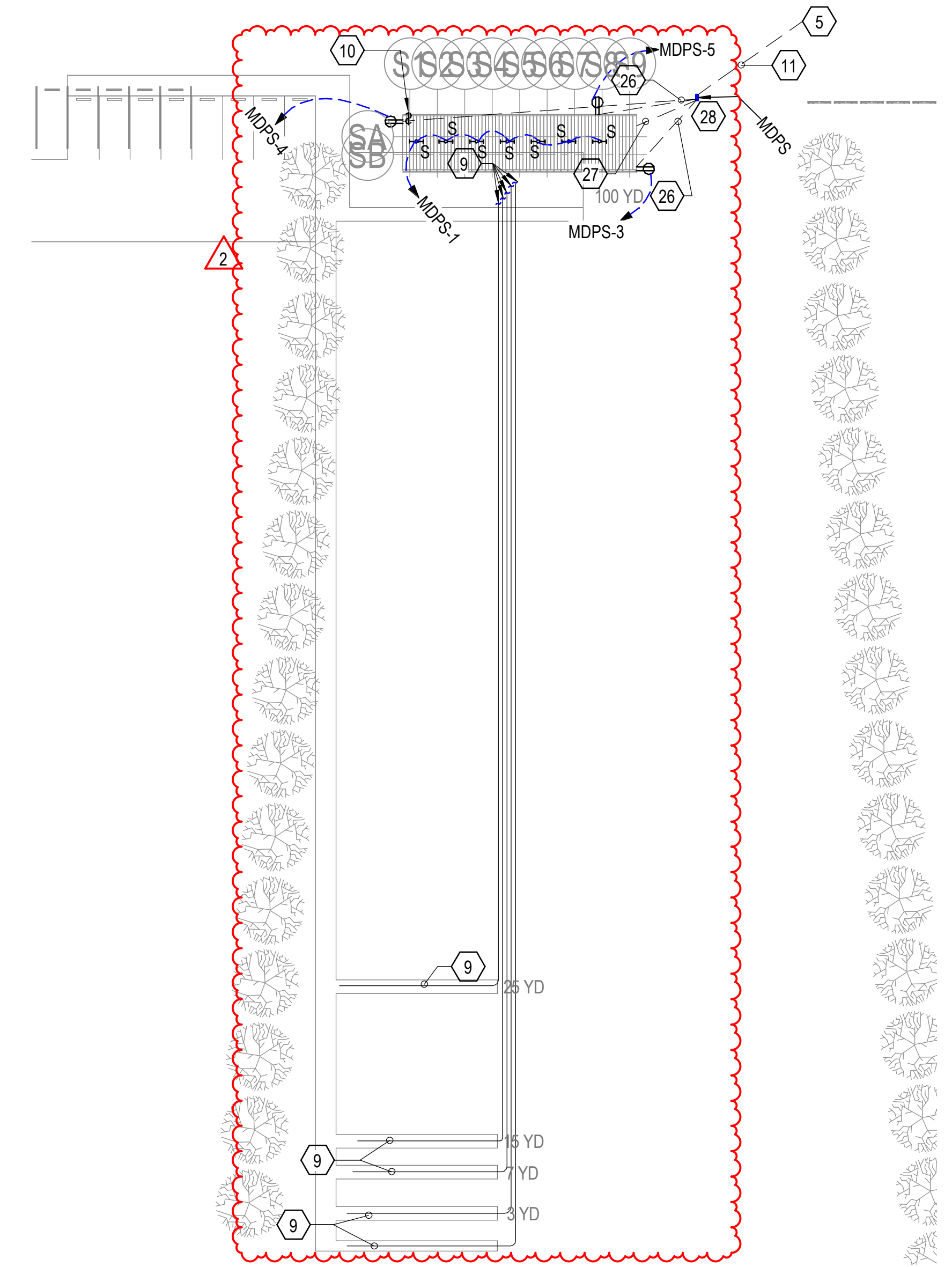
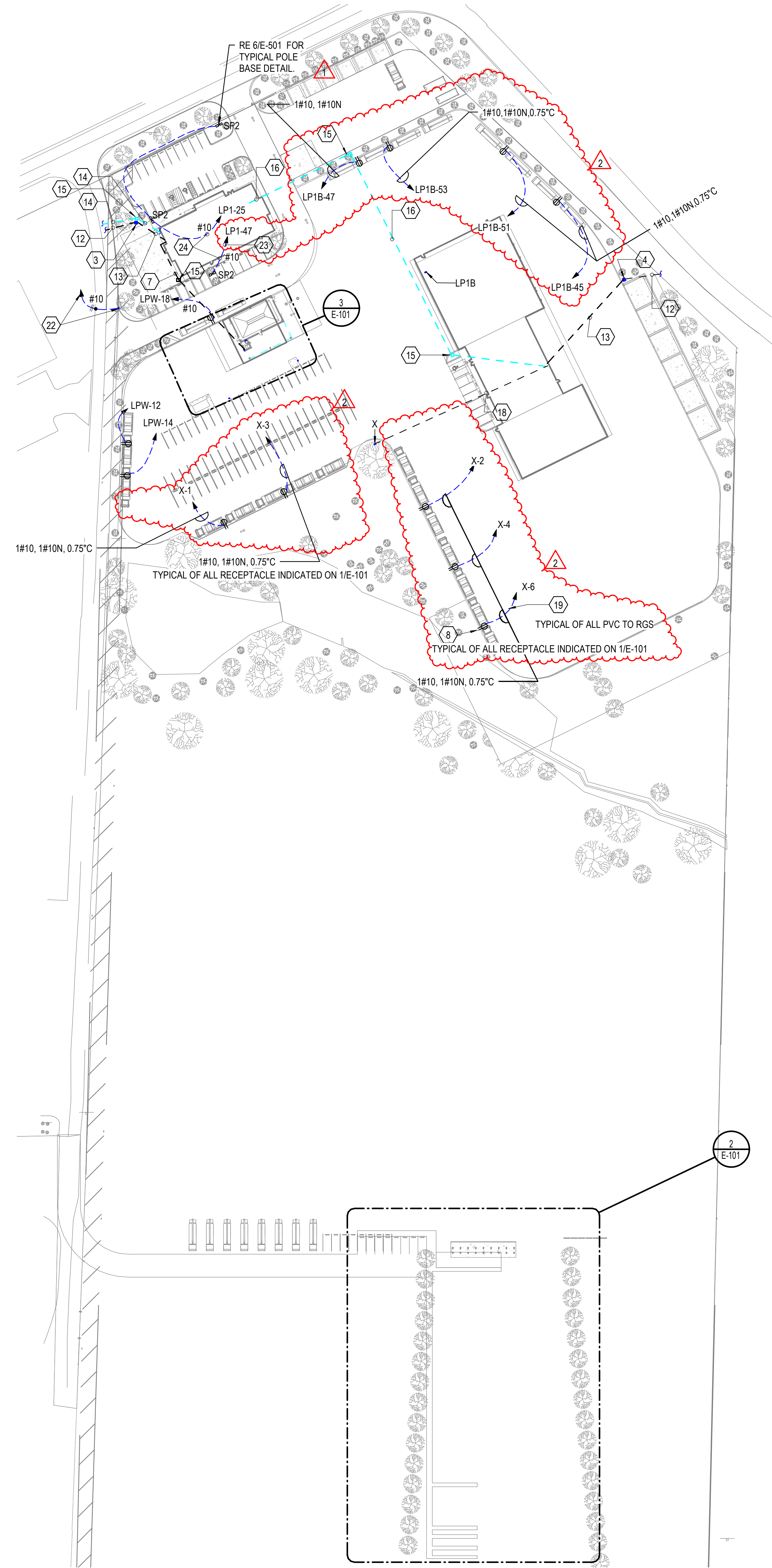
1. CROMWELL ARCHITECTS ENGINEERS, INC. ALL RIGHTS RESERVED.
 2. THIS SHEET DESIGNED FOR COLOR PRINTING. CRITICAL INFORMATION MAY BE LOST WITH BLACK AND WHITE PRINTING.

Project Number **2023-249**
 Issue Date **09-23-2024**
 Sheet Title **OVERALL SITE PLAN, SHOOTING RANGE AND WASH BAY ELECTRICAL PLAN**
 Sheet Number

E-101

KEYED NOTES:

- 1 PROVIDE 240V, 3P, 30A, NEMA 3R RATED DISCONNECT TO POWER DOOR OPERATOR, COORDINATE EXACT LOCATION WITH INSTALLER.
- 2 PROVIDE OUTDOOR RATED TIMER FOR RECEPTACLES. BASIS OF DESIGN MANUFACTURER INTERMATIC OR EQUAL.
- 3 PROPOSED LOCATION FOR PAD MOUNTED TRANSFORMER SERVING ADMINISTRATION BUILDING. REFER TO ADMIN SINGLE LINE DIAGRAM FOR SIZE.
- 4 PROPOSED LOCATION FOR VEHICLE MAINTENANCE PAD MOUNTED TRANSFORMER.
- 5 PROPOSED LOCATION FOR POLE MOUNTED TRANSFORMER SERVING SHOOTING RANGE MDPS.
- 6 EXPLOSION PROOF JUNCTION BOX AND CONDUITS POWER DIESEL PUMP MOTOR. POWER INDICATED IS APPROXIMATE, COORDINATE WITH FUEL TANK MANUFACTURER AND PROVIDE EXACT POWER REQUIREMENTS. ALL WIRING AROUND DIESEL FUEL TANK SHALL BE RATED FOR THAT LOCATION.
- 7 1/2" CONDUIT ROUTED UNDERGROUND FROM ADMINISTRATION BUILDING TO SHOOTING RANGE COVER. BURY CONDUITS 2'-0" BELOW FINISHED GRADE. COORDINATE WITH OWNER ON EXACT STUB OUT LOCATIONS. MINIMUM BURY DEPTH IS 3'-0". REFER TO ADMIN SINGLE LINE DIAGRAM.
- 8 MOUNT RECEPTACLES 4'-0" ABOVE FINISHED IN PEDESTAL REFER TO 3/E-501.
- 9 4-1" PVC UNDERGROUND ROUTED TO QUALIFYING DISTANCE FROM SHOOTING RANGE COVER. BURY CONDUITS 2'-0" BELOW FINISHED GRADE. COORDINATE WITH OWNER ON EXACT STUB OUT LOCATIONS.
- 10 WEATHER PROOF SWITCHES MOUNTED 4'-0" AFF TO CONTROL TYPE S1 LIGHTS.
- 11 PROVIDE CONDUITS ROUTED UNDERGROUND FROM UTILITY POLE TO MDP PER UTILITY REQUIREMENTS.
- 12 PROVIDE CONDUITS ROUTED UNDERGROUND FROM UTILITY POLE TO TRANSFORMER LOCATION. COORDINATE WITH UTILITY ON REQUIREMENTS.
- 13 ROUTE CONDUITS AND CABLE FROM TRANSFORMER SECONDARY TO MDP. REFER TO SINGLE LINE OF RESPECTIVE BUILDING FOR CABLE AND CONDUIT SIZE.
- 14 ROUTE 2 - 4" CONDUIT UNDERGROUND FROM TELECOMMUNICATION TIE IN LOCATION TO ELECTRICAL ROOM. COORDINATE EXACT TIE IN LOCATION WITH TELECOMMUNICATIONS PROVIDER.
- 15 PROVIDE TRAFFIC RATED INGROUND QUAZITE BOXES TO FACILITATE CABLE ROUTING.
- 16 ROUTE 1 - 4" CONDUIT FROM ADMINISTRATION ELECTRICAL ROOM TO VEHICLE MAINTENANCE COMMUNICATION ROOM. FURNISH WITH 12 STRAND FIBER OPTIC CABLE. COORDINATE ROUTE WITH OTHER DISCIPLINES.
- 17 JUNCTION BOX POWERS EXHAUST FAN, USE SWITCHED LEG OF THE LIGHTING CIRCUIT TO POWER FAN AND LOUVER ACTUATOR COORDINATE EXACT LOCATION WITH INSTALLER.
- 18 PROPOSED ROUTE FOR CONDUITS SERVING PANEL X FROM MAIN DISTRIBUTION PANEL. REFER TO VEHICLE MAINTENANCE BUILDING FOR CONDUIT SIZE.
- 19 REFER TO 4/E-501 FOR TYPICAL PVC TO RGS TRANSITION.
- 20 240V, 30A, 3POLE, NEMA 4X RATED DISCONNECT POWERS LIFT STATION BUCK BOOST TRANSFORMER COORDINATE EXACT LOCATION WITH INSTALLER. MOUNT AND SECURE DISCONNECT ON STAINLESS STEEL UNISTRUT.
- 21 SWITCH CONTROLS WASHBAY LIGHTING. PROVIDE TIMER FOR LIGHTING CIRCUIT. BASIS OF DESIGN MANUFACTURER IS INTERMATIC OR EQUAL.
- 22 240V, 30A, 3POLE DISCONNECT POWERS AUTOMATIC GATE. COORDINATE WITH GATE MANUFACTURER ON EXACT POWER REQUIREMENTS. REFER TO ADMINISTRATION BUILDING SINGLE LINE FOR POWER.
- 23 PARTIAL CIRCUIT. REFER TO ADMINISTRATION BUILDING EL101-A FOR CIRCUIT CONTINUATION.
- 24 ROUTE LIGHTS THROUGH LIGHTING CONTACTOR. REFER TO ADMINISTRATION BUILDING 2/E-501-A.
- 25 DISCONNECT POWER GAS PUMP MOTOR. LOCATE 15' AWAY FROM PUMP. LABEL GAS PUMP POWER.
- 26 ROUTE CONDUITS UNDERGROUND TO SERVE RECEPTACLES AND LIGHTS.
- 27 PROVIDE 4-1" CONDUITS FROM MDP-S TO SHED FOR FUTURE USE. STUB OUT CLOSE TO SHED COLUMNS. PROVIDE PULLSTRING AND CAPS ON ALL CONDUITS.
- 28 PROVIDE UNISTRUT TO MOUNT METER CAN AND PANELBOARD.



2 SHOOTING RANGE ELECTRICAL PLAN
 1" = 30'-0"

3 TRUCK WASH ELECTRICAL PLAN
 3/32" = 1'-0"

GENERAL NOTES:

- A. COORDINATE EXACT LOCATION OF DISCONNECTS POWERING MECHANICAL EQUIPMENT WITH INSTALLER. MAKE FINAL CONNECTIONS TO EQUIPMENT.
- B. CONTRACTOR SHALL WIRE EQUIPMENT PER MANUFACTURER INSTRUCTIONS. ALL WIRING AND CONNECTIONS SHALL BE PER MANUFACTURER'S RECOMMENDATIONS.
- C. COORDINATE ALL CONDUIT LOCATIONS WITH OTHER DISCIPLINES.
- D. ALL EXTERIOR RECEPTACLES SHALL BE GFI PROTECTED WITH HEAVY DUTY WEATHERPROOF IN USE COVER.
- E. ALL EXTERIOR ELECTRICAL EQUIPMENT SHALL BE NEMA 3R RATED.
- F. ALL EXTERIOR LIGHTING SHALL BE CONTROLLED FROM CONTACTOR AND ASSOCIATED PHOTOCELL. AIM PHOTOCELL PER MANUFACTURER RECOMMENDATIONS.

GENERAL NOTES:

- G. EXTERIOR CONDUITS SHALL BE BURIED A MINIMUM OF 3'-0" BELOW FINISHED GRADE. USE RIGID METAL CONDUIT WHERE NOT PROTECTED.
- H. POWER INDICATED ON PLANS IS BASED ON BASIS OF DESIGN. IF DIFFERENT EQUIPMENT IS USED CONTRACTOR SHALL PROVIDE POWER PER MANUFACTURER'S RECOMMENDATIONS AT NO EXTRA CHARGE.
- I. COORDINATE FINAL LOCATIONS OF TRANSFORMERS AND UTILITY POLES WITH UTILITY PROVIDER. PROVIDE CONDUITS

1 OVERALL ELECTRICAL SITE PLAN
 1" = 60'-0"