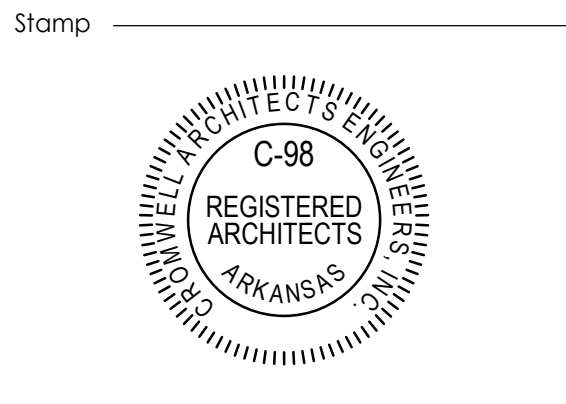


Design Phase _____

CONSTRUCTION DOCUMENTS

Revisions

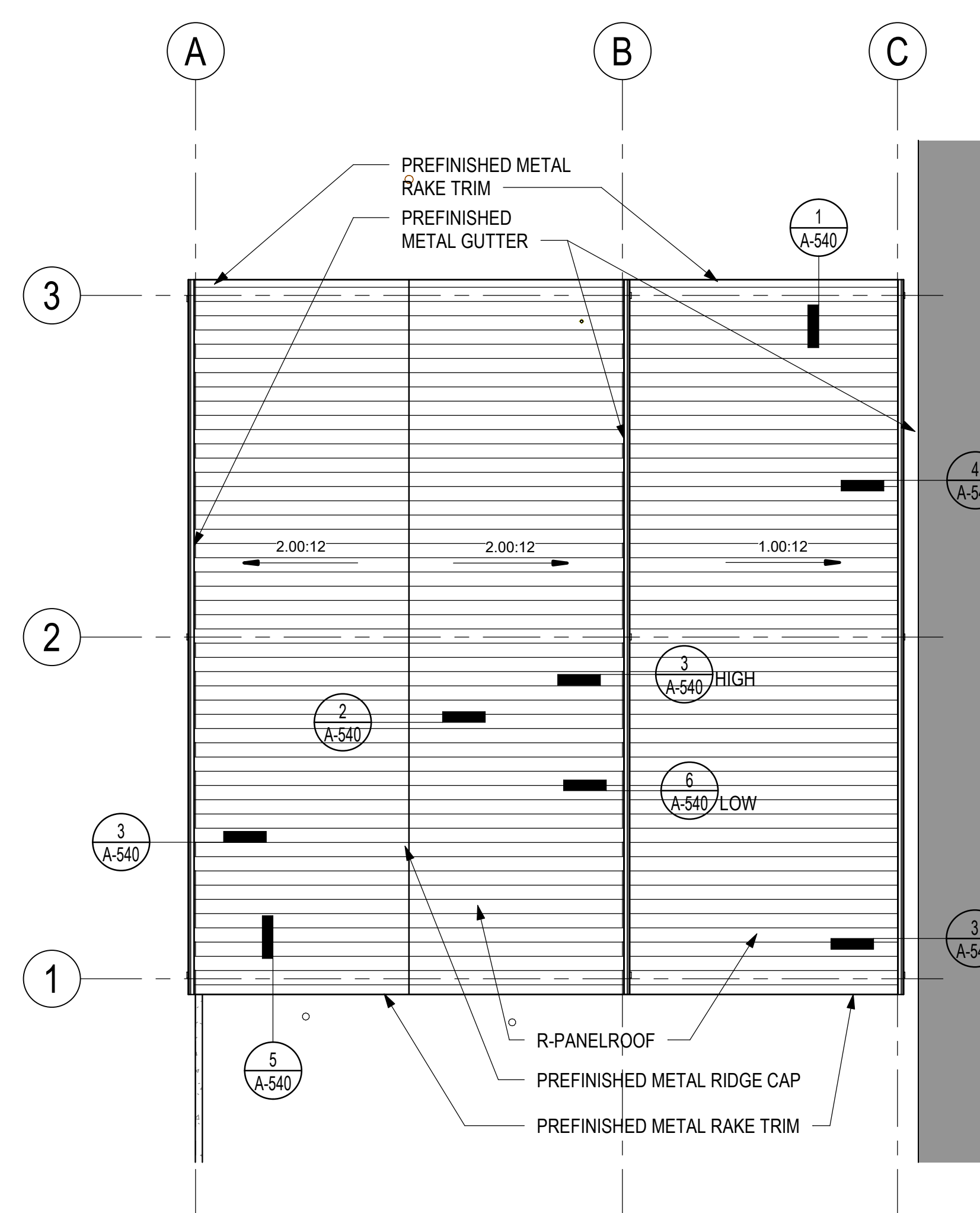
No.	Date	Description
1	11-05-2024	ADD 002
2	11-15-2024	ADD 003



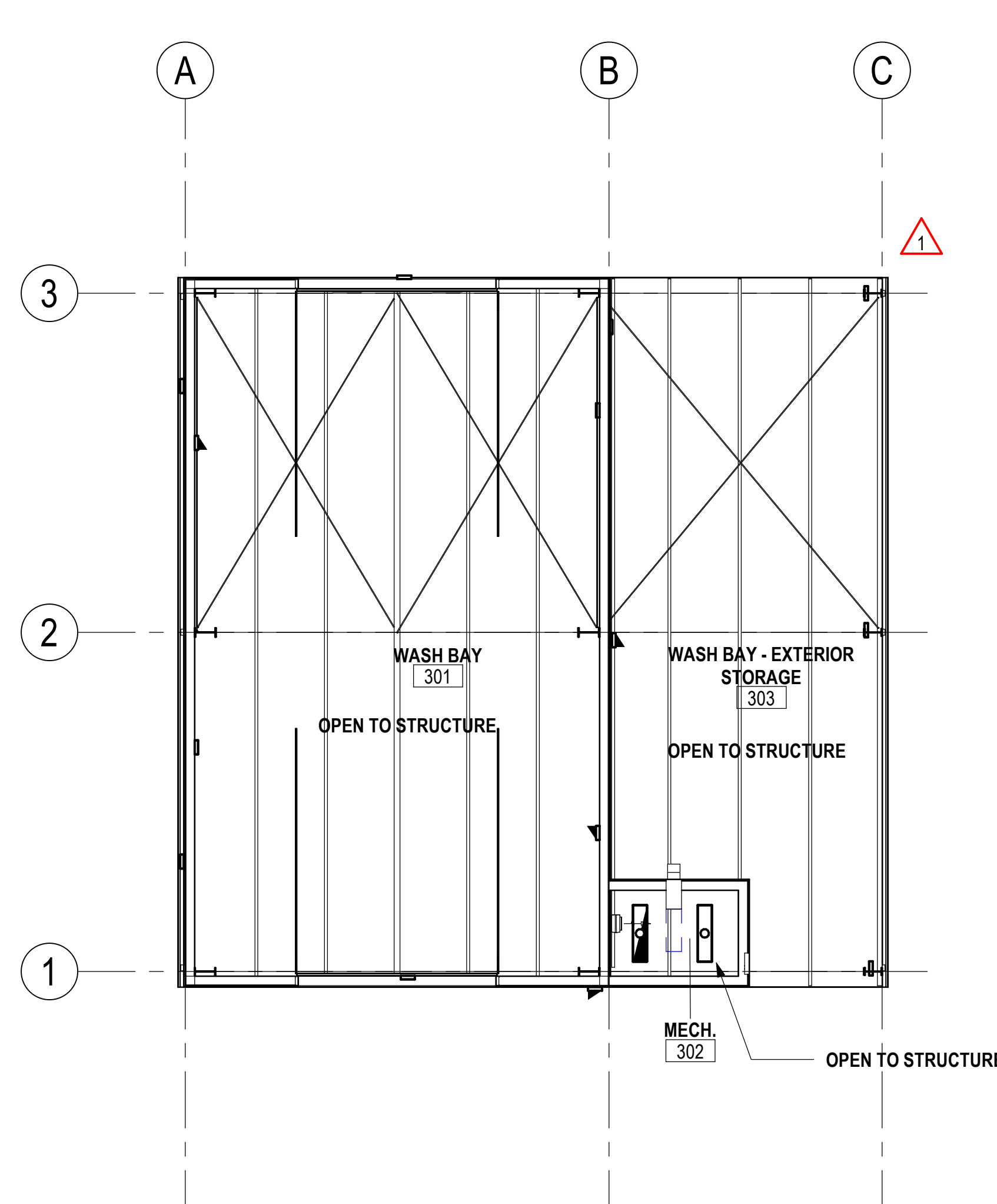
Notes:
 1. CROMWELL ARCHITECTS ENGINEERS, INC. ALL RIGHTS RESERVED
 2. THIS SHEET DESIGNED FOR COLOR PRINTING. CRITICAL INFORMATION MAY BE LOST WITH BLACK AND WHITE PRINTING.

Project Number: 2023-249
 Issue Date: 09-23-2024
 Sheet Title: _____
 Sheet Number: _____

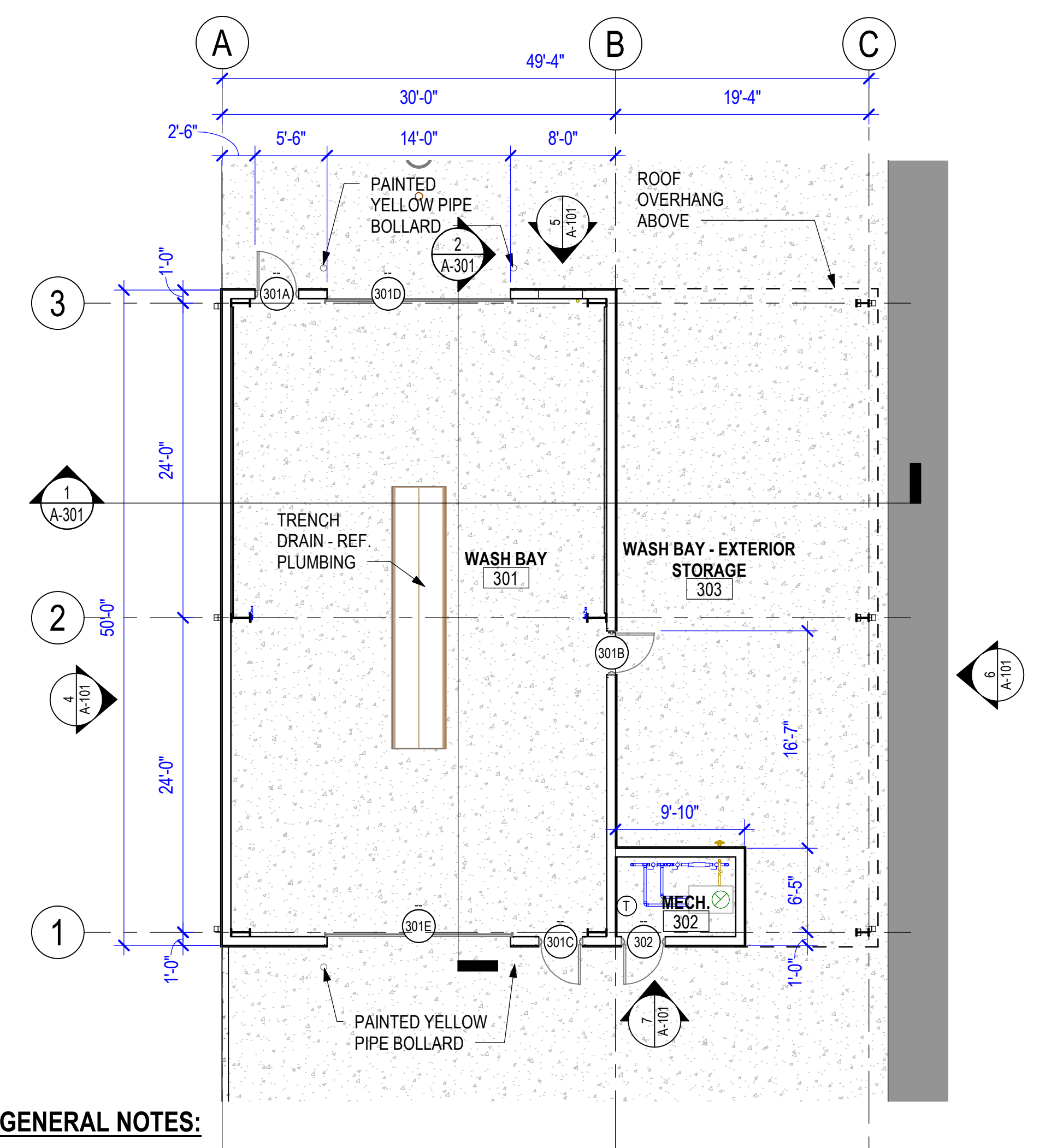
- ROOF PLAN GENERAL NOTES:**
1. ROOF MATERIAL TO BE PBR PANEL BY METAL BUILDING MANUF.
 2. REFER TO STRUCTURAL DRAWINGS.
 3. REFER TO SPECIFICATIONS.
 4. ROOF PITCH IS 2:12 AS INDICATED -UNLESS SHOWN OTHERWISE.
 5. PROVIDE CONTINUOUS PERFORATED FLUSH METAL SOFFIT VENTS AT SOFFITS AT 48" O.C.
 6. REFER TO MECHANICAL DRAWINGS FOR ALL ROOF PENETRATIONS AND FLASHING DETAILS.



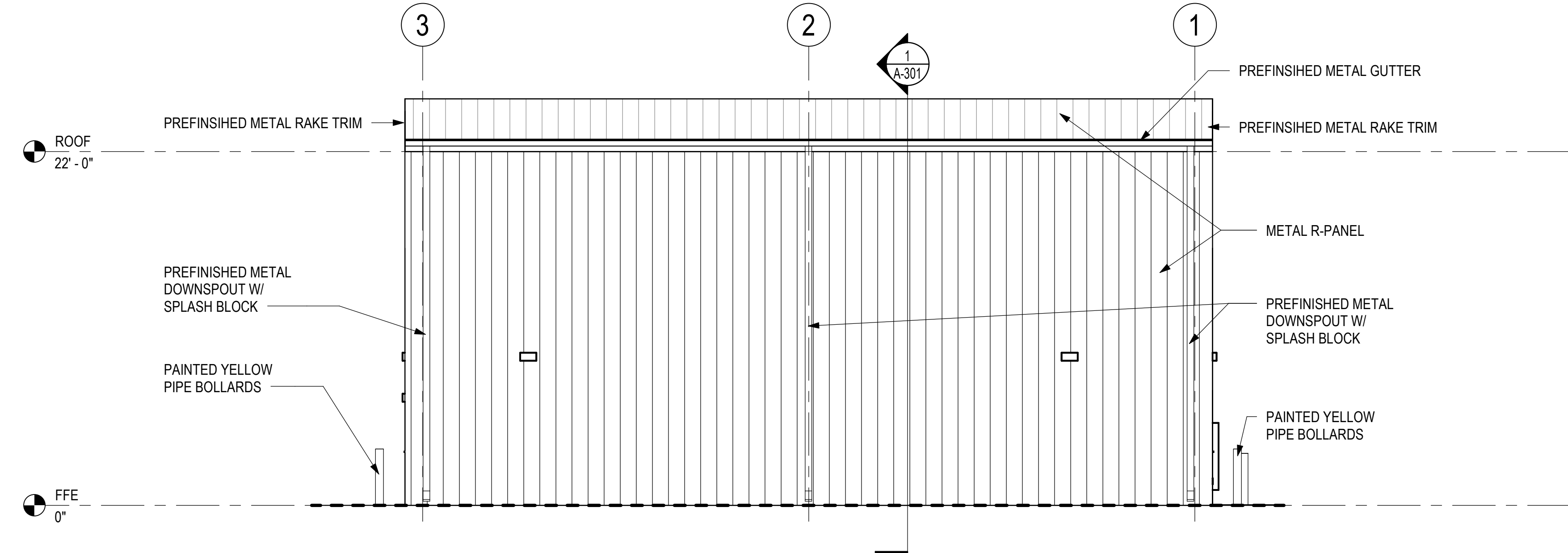
3 ROOF PLAN - WASH BAY
 1/8" = 1'-0"
 SCALE: 1/8" = 1'-0"



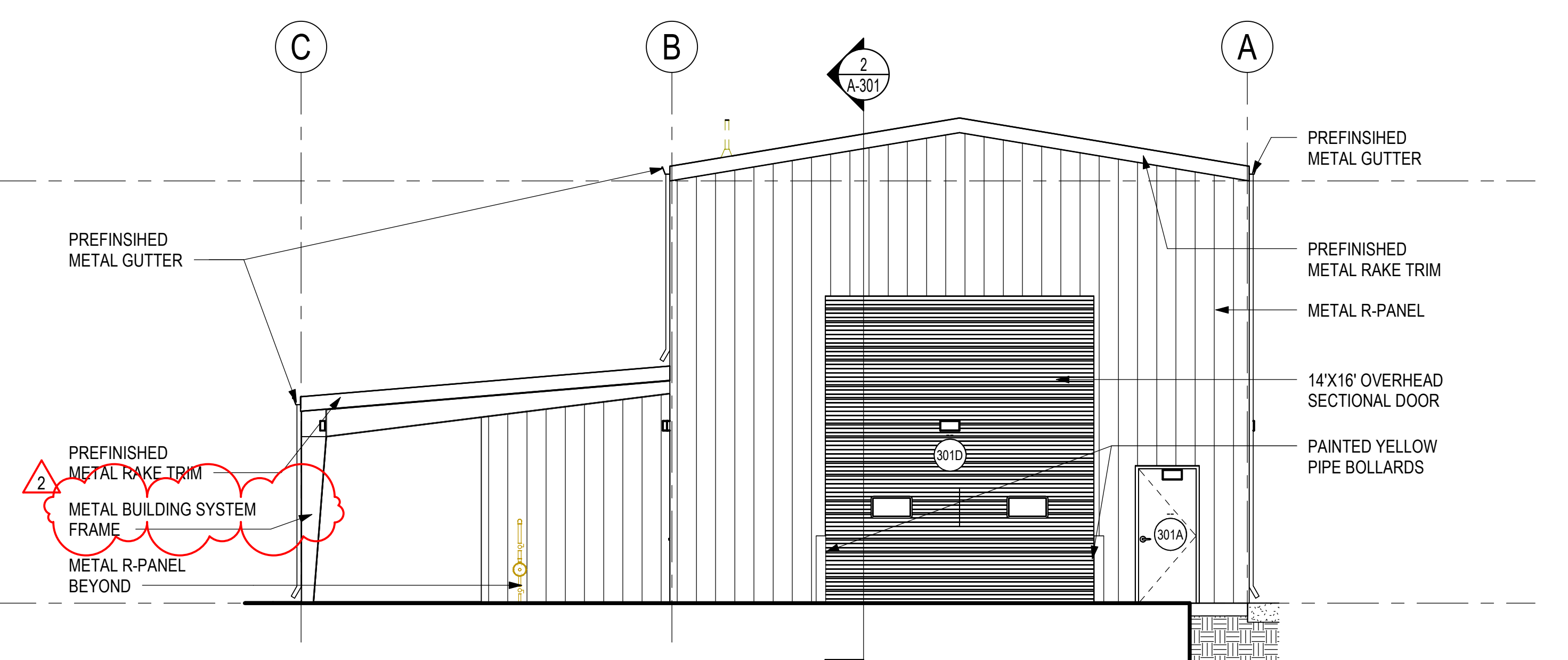
2 RCP - WASH BAY
 1/8" = 1'-0"
 SCALE: 1/8" = 1'-0"



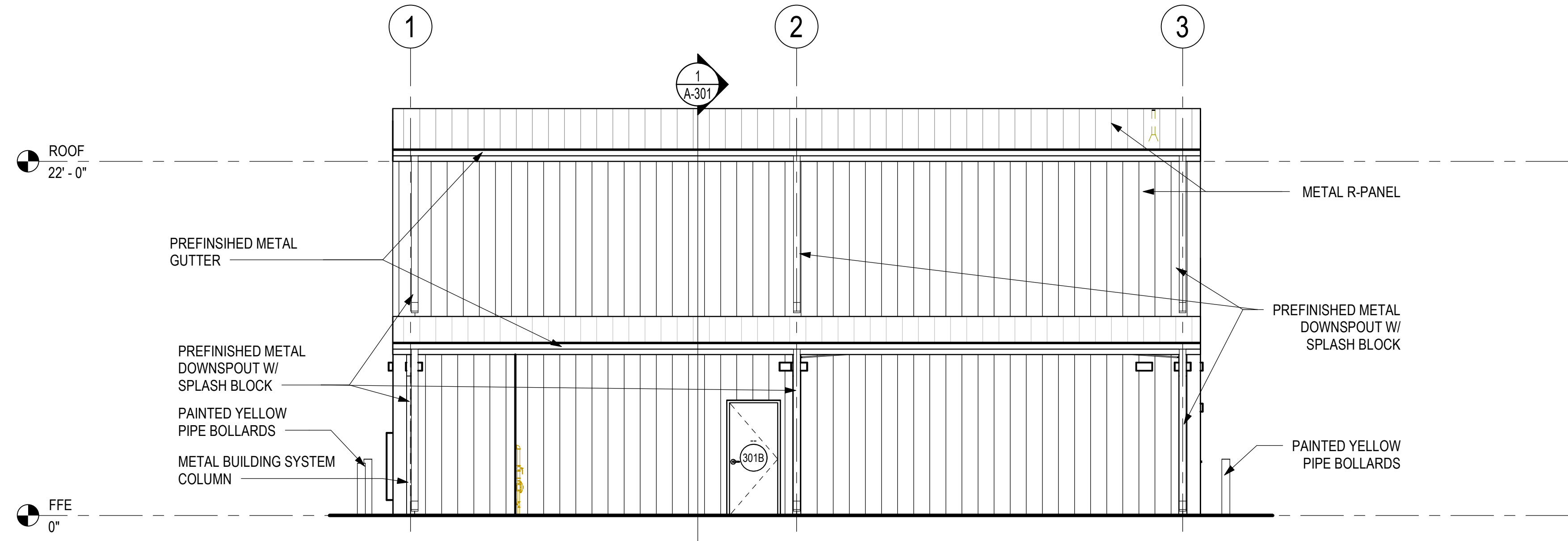
1 PLAN - WASH BAY
 1/8" = 1'-0"
 SCALE: 1/8" = 1'-0"



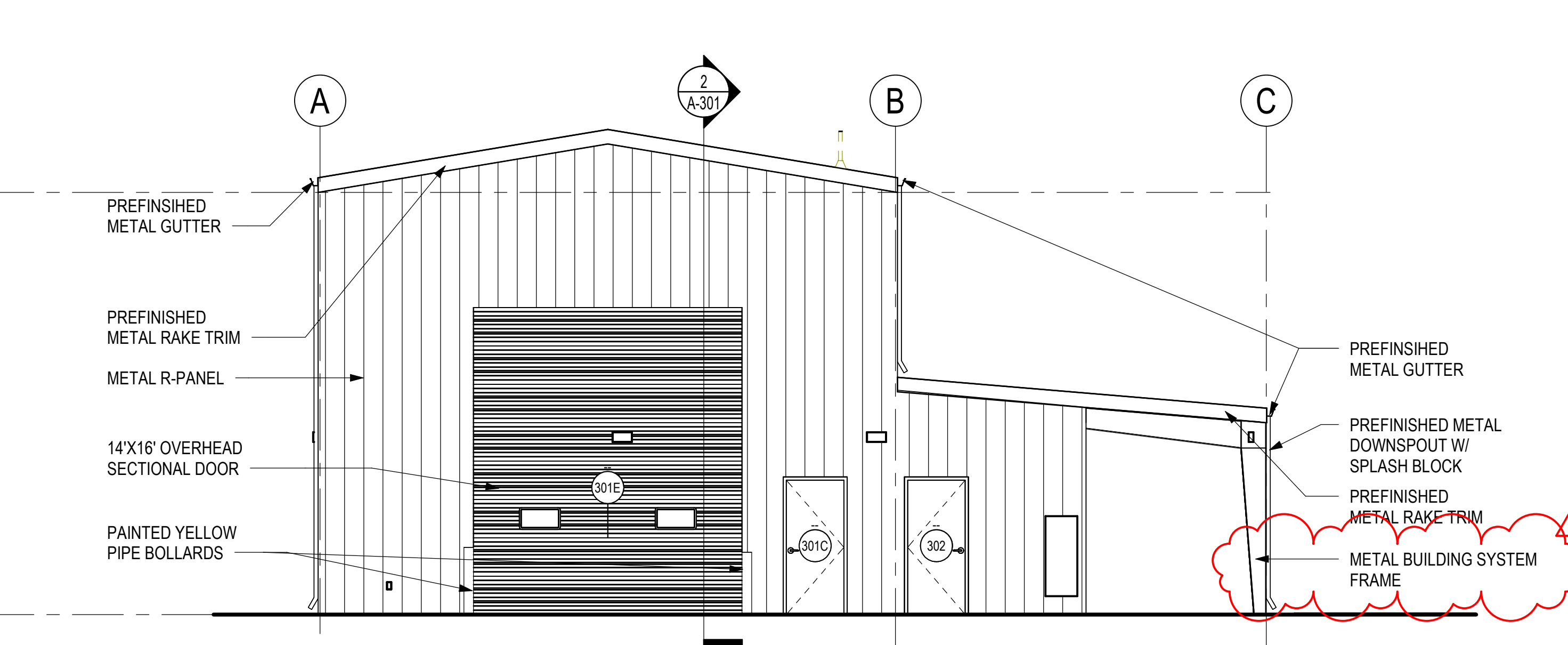
4 WASH BAY - NORTH ELEVATION
 3/16" = 1'-0"



5 WASH BAY - EAST ELEVATION
 3/16" = 1'-0"



6 WASH BAY - SOUTH ELEVATION
 3/16" = 1'-0"



7 WASH BAY - WEST ELEVATION
 3/16" = 1'-0"

FLOOR PLAN GENERAL NOTES:

1. DIMENSIONS ARE TO FINISH FACE OF EXTERIOR WALLS AND FACE OF STUD AT INTERIOR WALLS, UNLESS NOTED OTHERWISE.