

**GENERAL NOTES**

1 REFER TO SHEET M-001-A FOR MECHANICAL NOTES, ABBREVIATIONS, AND LEGEND SYMBOLS.

**KEYED NOTES**

- 1 PROVIDE SOUND HOOD FOR RETURN AIR TRANSFER GRILLE INDICATED.
- 2 PROVIDE AND INSTALL PIPE SUPPORTS PER DETAIL 10 / M-502-A. TYPICAL.
- 3 PROVIDE NEW 6" CONCRETE PAD.
- 4 REFRIGERANT LINE SETS SIZED PER MANUFACTURER'S RECOMMENDATIONS.
- 5 MINIMIZE ELBOWS INSTALLED IN REFRIGERANT LINE SETS AND INSTALL AS DIRECTLY WITH STRAIGHT RUNS AS MUCH AS POSSIBLE. TYPICAL.
- 6 SUPPLY AIR AND RETURN AIR DUCTWORK SHALL DISCHARGE LOW. PENETRATE WALL AND PROVIDE 90 DEGREE ELBOWS WITHIN CHASE.
- 7 PROVIDE AND INSTALL DUCT SUPPORT PER DETAIL 8 / M-502-A.
- 8 REFRIGERANT PIPING DROPS DOWN IN CHASE AND ROUTED APPROXIMATELY 10 INCHES ABOVE GRADE. INSULATE REFRIGERANT PIPING PER SPECIFICATIONS AND PROVIDE ALUMINUM JACKETING ON ALL EXTERIOR PIPE INSULATION.
- 9 MANUFACTURER'S RECOMMENDED SERVICE CLEARANCE. TYPICAL.
- 10 MOUNT DUCTLESS SPLIT INDOOR UNIT ABOVE DOOR APPROXIMATELY 8'-0" ABOVE FINISHED FLOOR.
- 11 GRAVITY DAMPER SHIPPED LOOSE FOR EXHAUST AIR DUCTWORK SERVING ASSOCIATED EXHAUST FAN.
- 12 HVAC BUILDING CONTROLLER WITH 120 VOLT REQUIRED POWER SUPPLY. REFER TO ELECTRICAL DRAWINGS.
- 13 PROVIDE EXHAUST FAN MANUFACTURER'S DUCT WALL CAP FOR EXHAUST DUCT FROM CEILING MOUNTED EXHAUST FAN.

**KEYED NOTES**

- 14 CONDENSATE DRAIN LINE SHALL BE TRAPPED PER DETAIL 10 / M-501-A.
- 15 ALL CONDENSATE DRAIN PIPING SHALL BE COPPER.
- 16 CONDENSATE PIPING SHALL BE HEAT TRACED 5 WATTS PER FOOT. HEAT TRACE CABLE SHALL BE EQUAL TO NVENT RAYCHEM XL-TRACE SELF-REGULATING CABLE. INSTALL PER MANUFACTURER'S INSTRUCTIONS.
- 17 RETURN AIR TRANSFER DUCT CONNECTED TO AIR HANDLING UNIT. THE TRANSFER RETURN AIR ELBOW SHALL BE LINED.
- 18 BALANCE OUTSIDE AIRFLOW FOR AIR HANDLING UNIT TO 445 CFM.
- 19 24 VOLT MOTORIZED DAMPER.
- 20 MULTI-BLADE MANUAL BALANCING DAMPER EQUAL TO GREENHECK MBD-15 WITH MANUAL QUADRANT ACTUATOR TYPE.
- 21 CONDENSATE DRAIN LINE TIES INTO VENT LINE. PROVIDE P-TRAP.
- 22 ALLOWABLE REFRIGERANT LINE LENGTH OF 164 FEET SHALL NOT BE EXCEEDED AS OUTLINED. MINIMIZE ELBOWS AS MUCH AS POSSIBLE.
- 23 CONDENSATE DRAIN LINE TURNS TIES INTO STORM DRAIN IN LOCATION INDICATED. REFER TO CIVIL.
- 24 CONDENSATE DRAIN LINE TURNS DOWN ABOVE OPEN HUB. SEE DETAIL 9 / M-502-A.
- 25 120 VOLT CONTROL PANEL REQUIRED FOR HEAT TRACED CONDENSATE DRAIN PIPING.

Key Plan

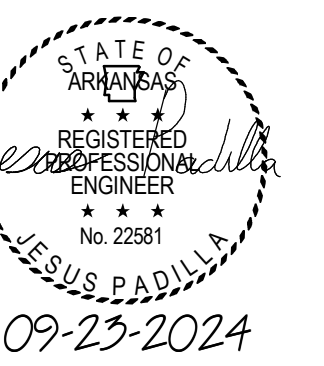
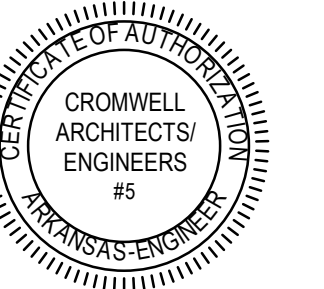
Design Phase

**CONSTRUCTION DOCUMENT**

Revisions

No.	Date	Description
1	10-09-2024	ADD 001
2	11-05-2024	ADD 002
3	11-15-2024	ADD 003

Stamp



Notes

1. CROMWELL ARCHITECTS ENGINEERS, INC. ALL RIGHTS RESERVED.
2. THIS SHEET DESIGNED FOR COLOR PRINTING. CRITICAL INFORMATION MAY BE LOST WITH BLACK AND WHITE PRINTING.

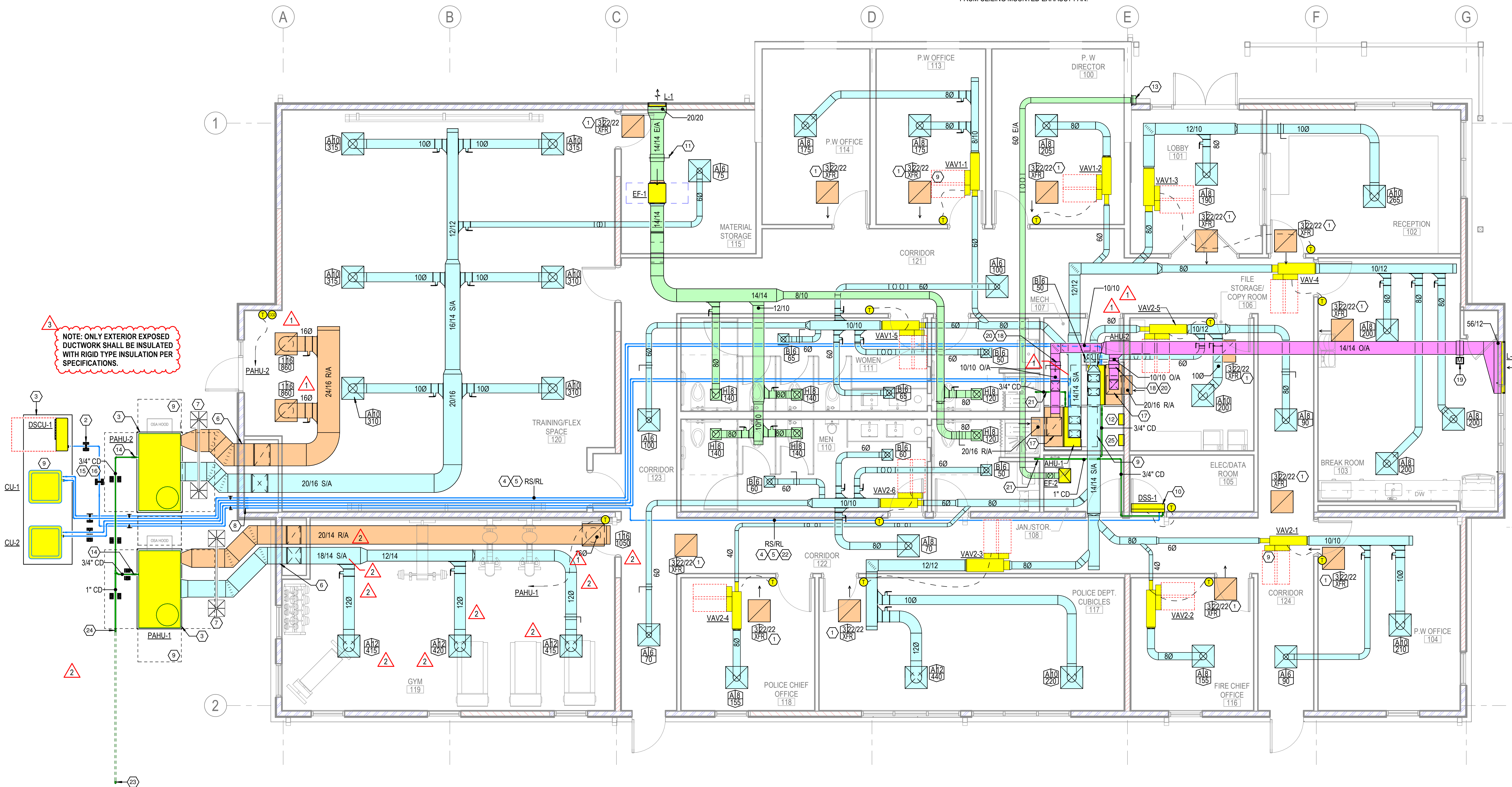
Project Number **2023-249-10**

Issue Date **09-23-2024**

Sheet Title  
**PUBLIC WORKS, POLICE AND FIRE ADMIN BUILDING MECHANICAL PLAN**

Sheet Number

**M-101-A**



NOTE: ONLY EXTERIOR EXPOSED DUCTWORK SHALL BE INSULATED WITH RIGID TYPE INSULATION PER SPECIFICATIONS.

1 PUBLIC WORKS, POLICE AND FIRE ADMIN BUILDING MECHANICAL PLAN  
 1/4" = 1'-0"

