



1 GROUND FLOOR PLAN - NORTH - HVAC
 1/8" = 1'-0"

GENERAL NOTES

- CONNECT NEW AIR DEVICES TO EXISTING BRANCH DUCTWORK. PROVIDE SQUARE TO ROUND TRANSITIONS AS REQUIRED. ENSURE FINAL CONNECTIONS PROVIDE A SMOOTH TRANSITION.
- COORDINATE ALL NEW CEILING DEVICES WITH NEW LIGHTS AND CEILING GRID.

KEYED NOTES

- REWORK BRANCH DUCTWORK AS REQUIRED TO RELOCATE AIR DEVICE LOCATION IN TO LOBBY SPACE.
- PROVIDE DRYER VENT THROUGH WALL. TERMINATE WITH WALL CAP.
- PROVIDE NEW SIDEWALL RETURN AIR GRILLE. VERIFY DUCT CONNECTION SIZE PRIOR TO ORDERING.



600 Main Street, Suite 300
 North Little Rock, AR 72114
 Phone: 501-758-7443
 Fax: 501-753-7309
 www.taggarch.com



NORTH LITTLE ROCK

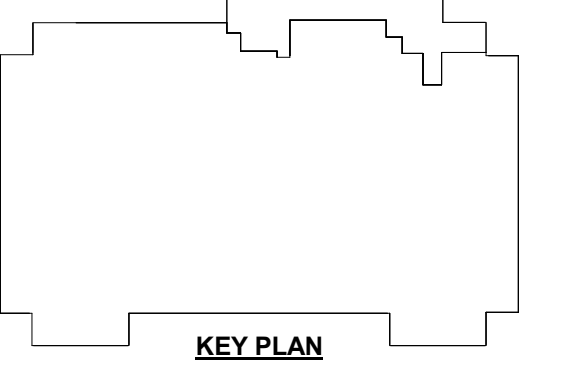
NORTH LITTLE ROCK
 COMMUNITY
 CENTER
 RENOVATIONS

PROJECT NAME _____

SEAL _____

REVISIONS

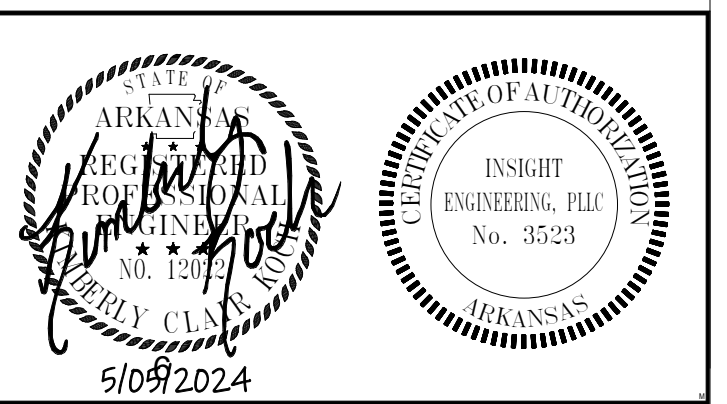
NO.	DESCRIPTION	DATE



GROUND FLOOR PLAN -
 NORTH - HVAC

SHEET NAME _____
 DATE 5/05/2024

PROJECT NUMBER 161423



SHEET NUMBER **M201**