

		DOOR SCHEDULE										
DOOR NUMBER	ROOM NAME	WIDTH	HEIGHT	DOOR TYPE	MATERIAL	FINISH	FRAME TYPE	MATERIAL	FINISH	FIRE RATING	HARDWARE SET	NOTES
100A	LOBBY	6'-0"	7'-0"	C	ALUM			ALUM			HW-1	CONCEALED DOOR OPERATOR
100B	RECEPTION	6'-0"	7'-2"	C	ALUM			ALUM			HW-1	
100C	VEST.	3'-0"	7'-0"	D								CASED OPENING
107A	ANTI	3'-0"	7'-0"	A	WD	PF					HW-2	
136	MENS VEST	3'-0"	7'-0"	A	WD	PF						RESUE EXISTING FRAME & HW
137	MENS	3'-0"	7'-9 1/2"	D	WD							CASED OPENING
138	STORAGE	6'-0"	7'-0"	B	WD	PT						RESUE EXISTING FRAME & HW
139	WOMENS VEST	3'-0"	7'-0"	A	WD	PF						RESUE EXISTING FRAME & HW
140	WOMENS	3'-0"	8'-5 1/4"	D	WD							CASED OPENING

DOOR HARDWARE FINISH AND STYLE TO MATCH EXISTING - VERIFY WITH EXISTING HARDWARE LISTED BELOW IS BASIS OF DESIGN - VERIFY MATCH WITH EXISTING.

HW-1: PAIR ALUMINUM STOREFRONT DOORS
EACH TO HAVE:

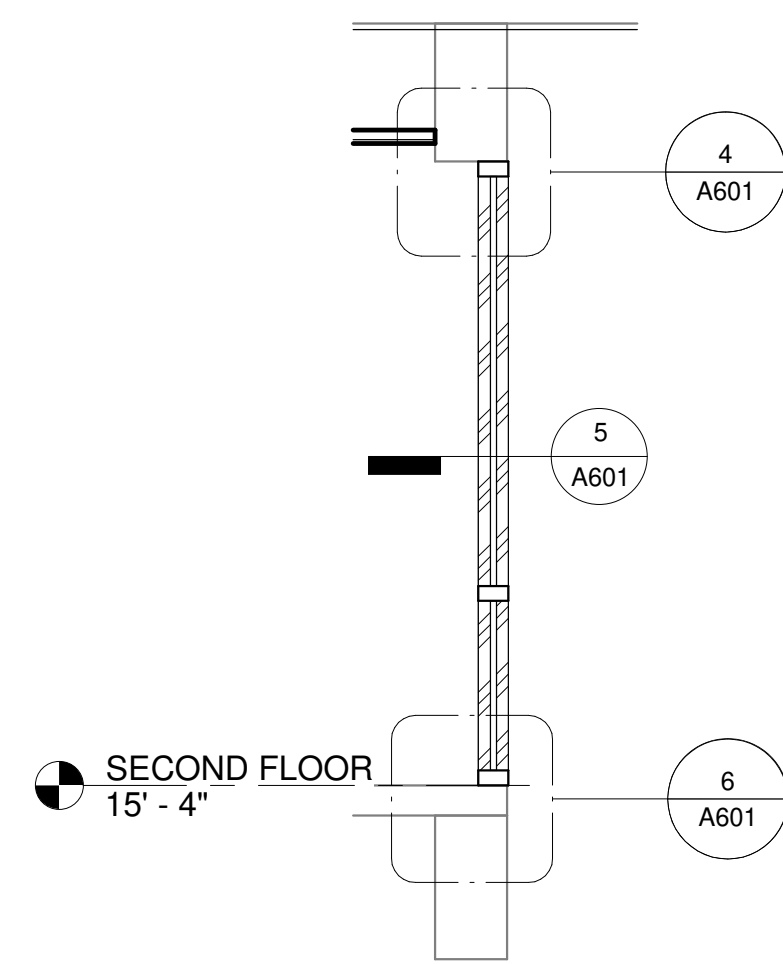
(CR) CYLINDERS

- TYPE AND QUANTITY OF CYLINDERS TO BE VERIFIED -
- BALANCE OF HARDWARE BY DOOR SUPPLIER -
- PROVIDE CYLINDERS FOR EXTERIOR DOORS TO MATCH STOREFRONT SYSTEM

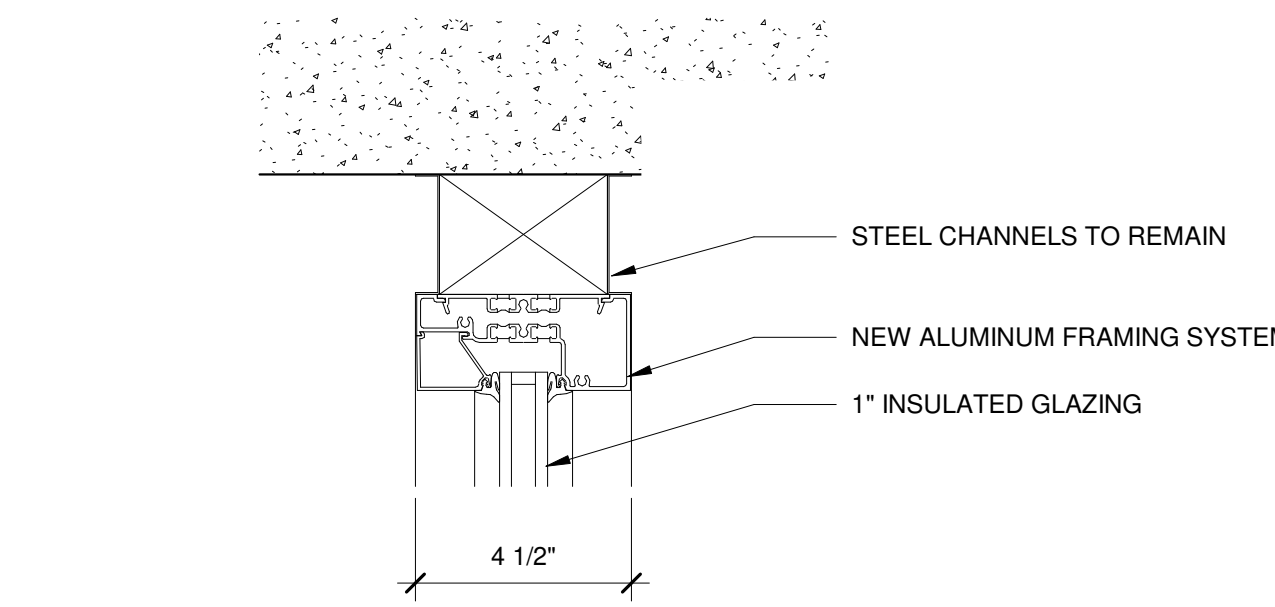
CARD READER ACCESS CONTROL

HW-2: STORAGE ROOMS
EACH TO HAVE:

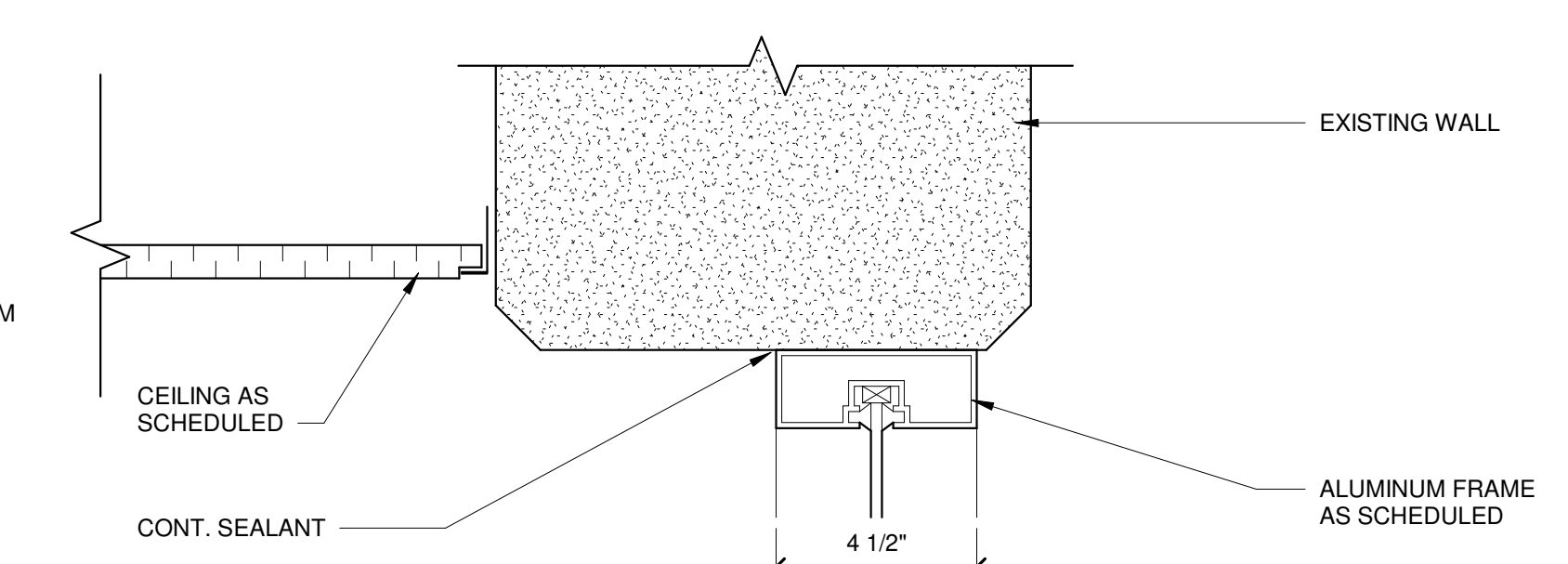
(HA)	3	EA	HINGES	HAGER BB1279 4-1/2 X 4-1/2	
(CR)	1	EA	LOCKSET - STORAGE LOCK	CORBIN RUSSWIN CL3957	NZD
(HA)	1	EA	STOP	HAGER 241F232W	
(TR)			SILENCERS	TRIMCO 1229A	



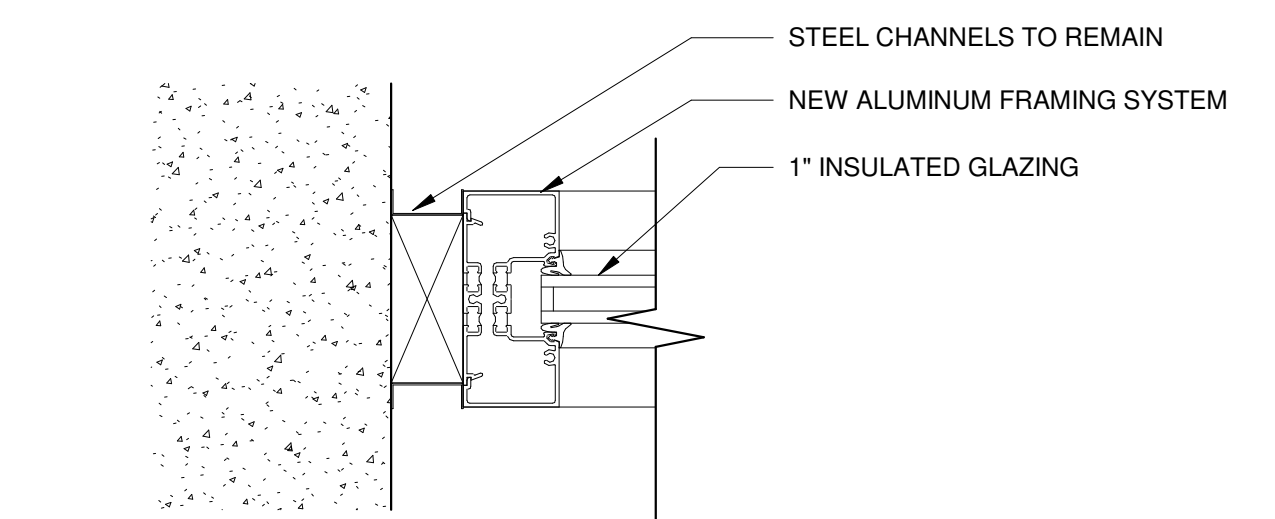
7 SECTION @ CARDIO
3/8" = 1'-0"



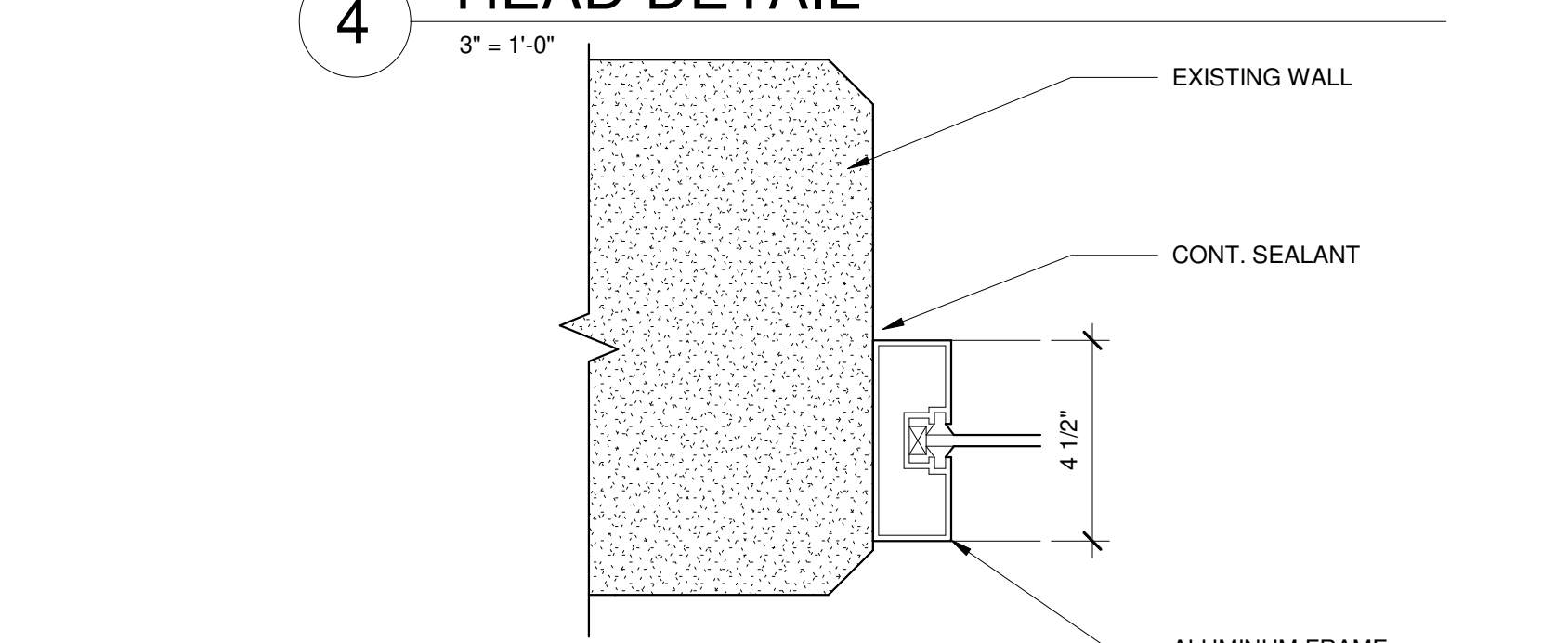
1 STOREFRONT HEAD
3" = 1'-0"



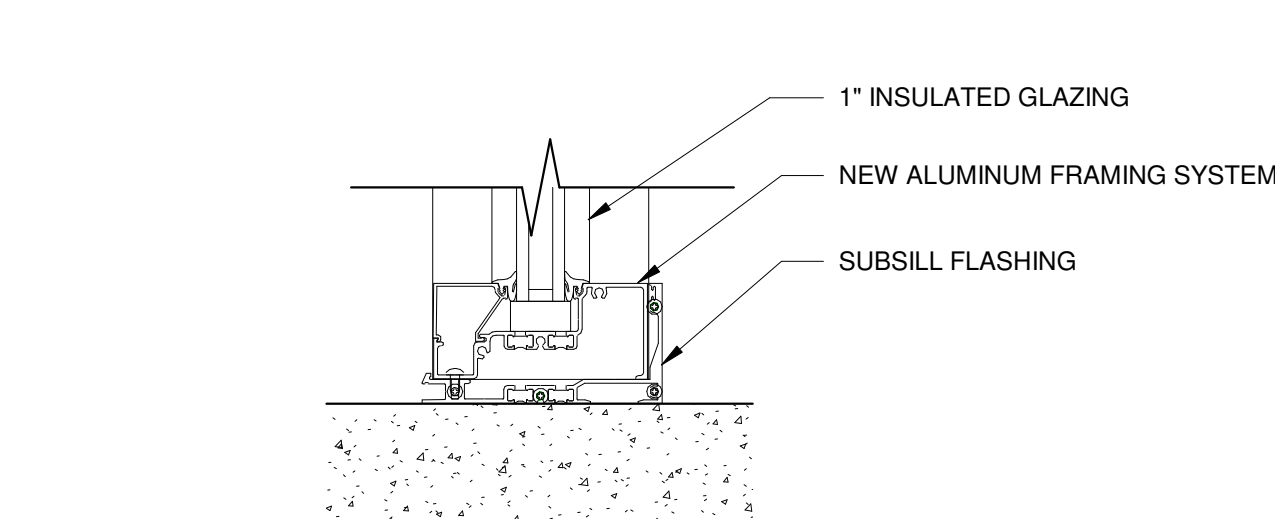
4 HEAD DETAIL
3" = 1'-0"



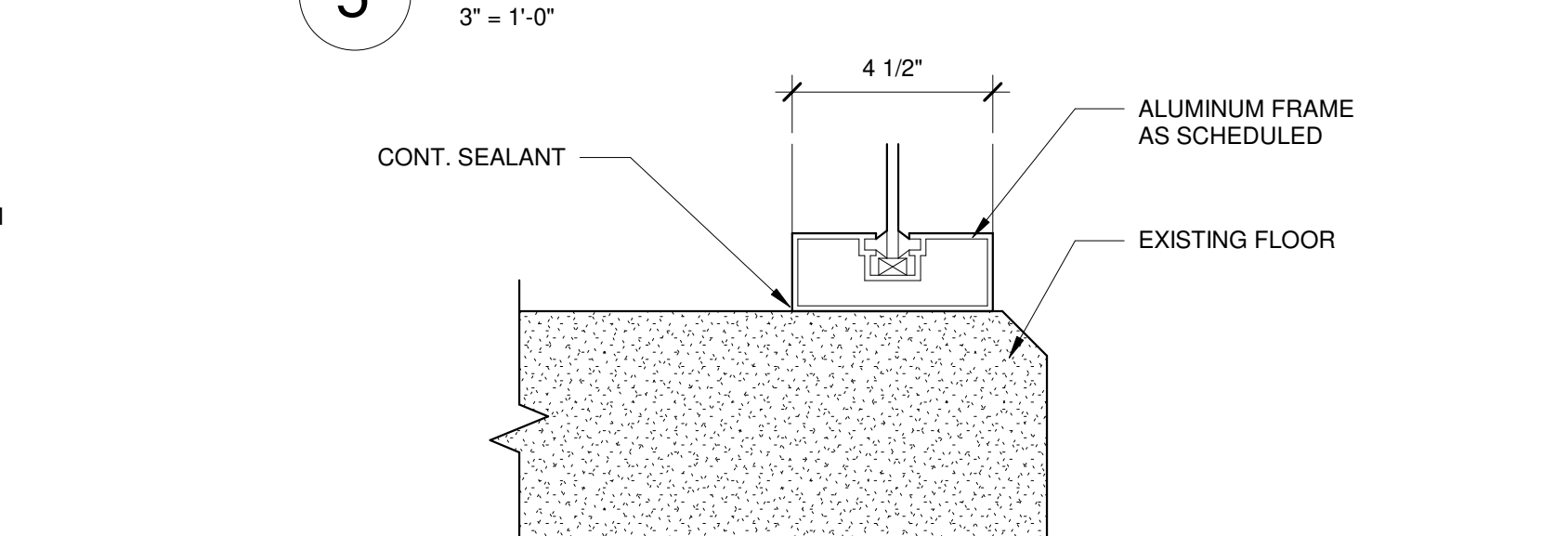
2 STOREFRONT JAMB
3" = 1'-0"



5 JAMB DETAIL
3" = 1'-0"

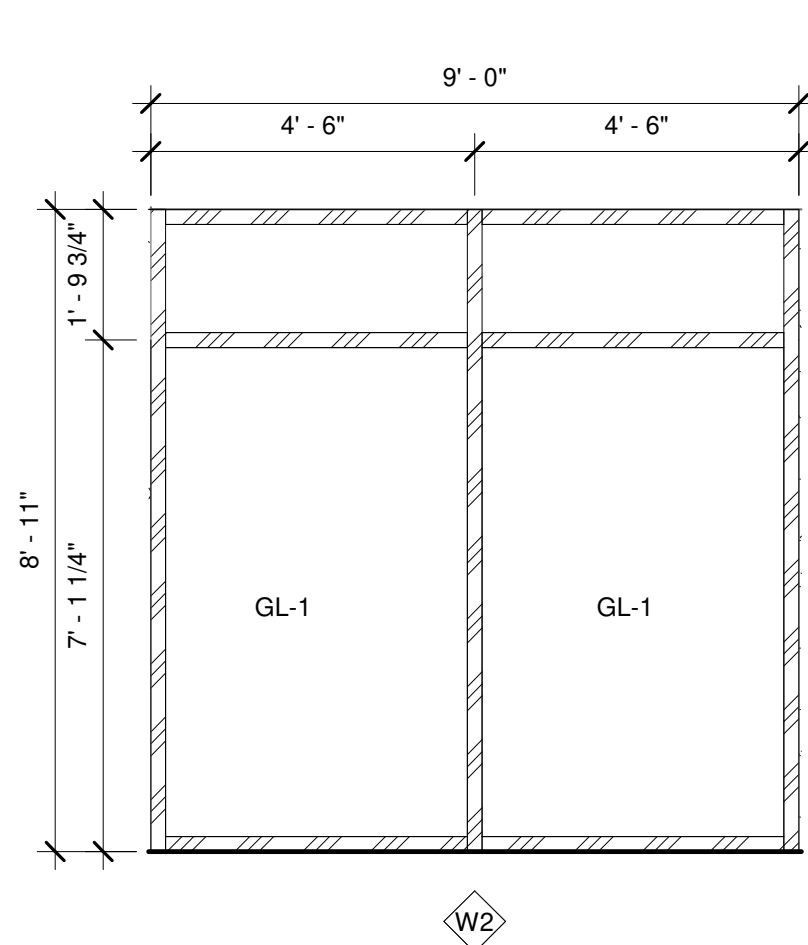
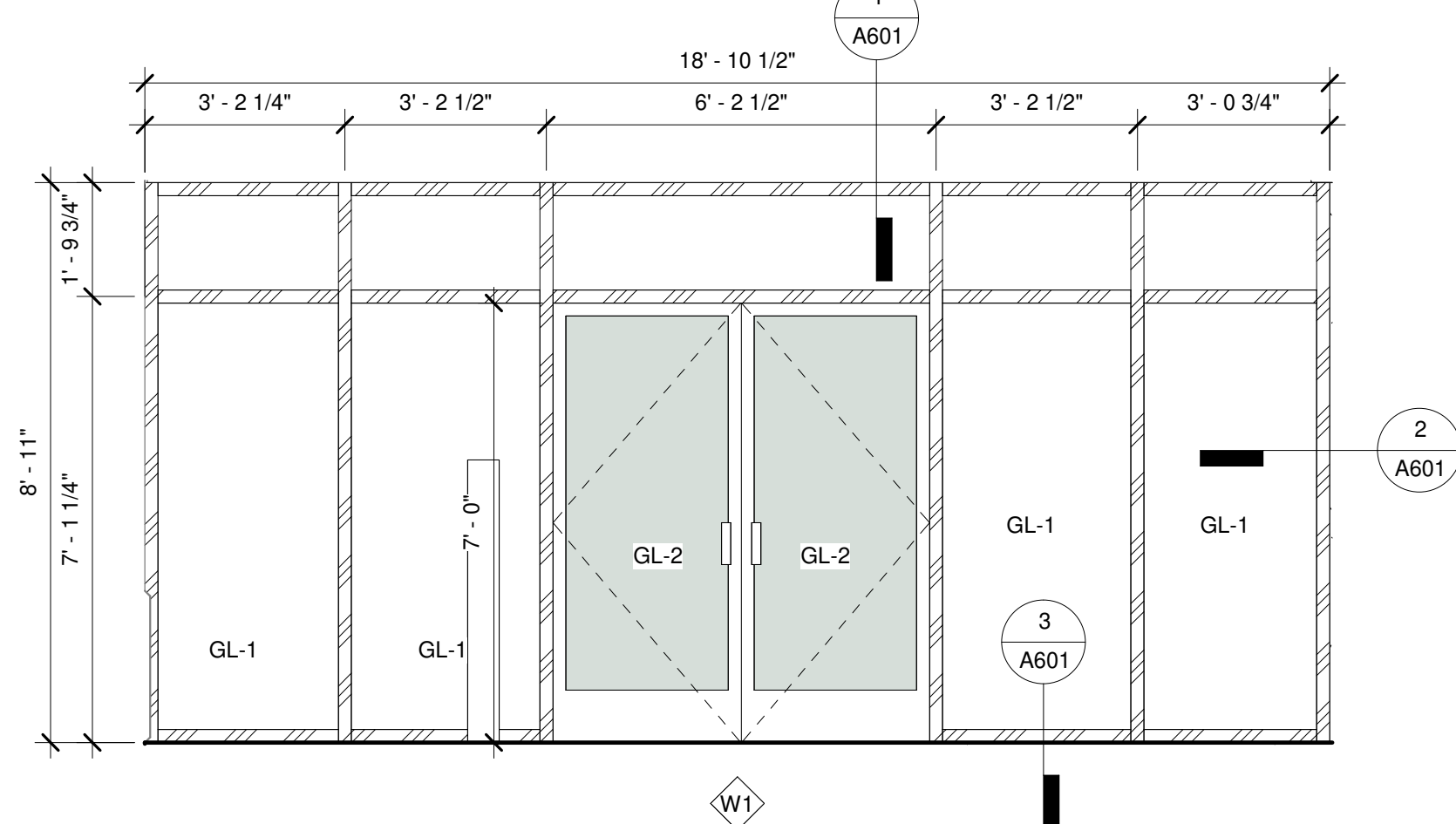


3 STOREFRONT SILL
3" = 1'-0"



6 SILL DETAIL
3" = 1'-0"

EXTERIOR ELEVATIONS

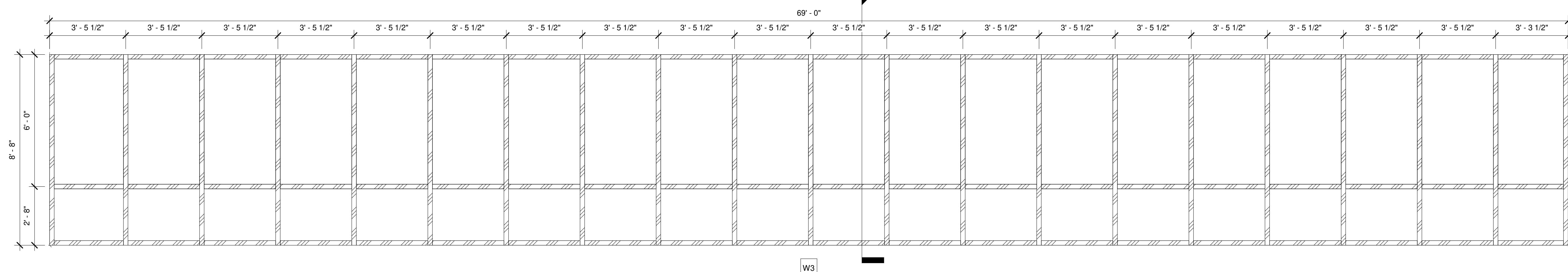


GL-1 -
1" INSULATED CLEAR
GLAZING ASSEMBLY, WITH
TEMPERED GLASS, IN
ALUM FRAMING

GL-2
1/4" CLEAR TEMPERED
GLASS

GL-1 -
1" INSULATED CLEAR
GLAZING ASSEMBLY, WITH
TEMPERED GLASS, IN
ALUM FRAMING

INTERIOR ELEVATION



GL-2 - 1/4" CLEAR TEMPERED GLAZING IN ALUMINUM FRAMING



NO.	DESCRIPTION	DATE