

### LIFE SAFETY PLAN LEGEND

- ONE HOUR FIRE BARRIER
- NEW 2 HOUR FIRE BARRIER
- 1/2 HOUR SMOKE BARRIER
- EMERGENCY EXIT LIGHT MOUNT ON WALL OVER DOOR WHENEVER POSSIBLE
- INDICATES ACCESSIBLE EGRESS LOCATION
- FEC-1 NEW SEMI-RECESSED FIRE EXTINGUISHER CABINET AND FIRE EXTINGUISHER
- EXISTING SMOKE BARRIER
- CORRIDOR WALL SMOKE PARTITION CAPABLE OF RESISTING THE PASSAGE OF SMOKE
- KEYED NOTE
- MAX. LENGTH TRAVEL DISTANCE ROUTE
- EGRESS LOCATION
- FEC-2 NEW FULL-RECESSED SLIM LINE FIRE EXTINGUISHER CABINET AND FLAT OVAL FIRE EXTINGUISHER

**TAGGART**  
ARCHITECTS

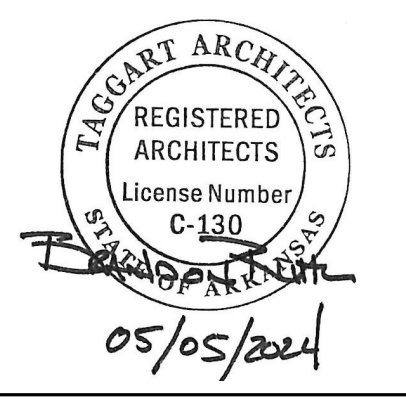
600 Main Street, Suite 300  
North Little Rock, AR 72114  
Phone: 501-758-7443  
Fax: 501-753-7309  
www.taggarch.com



NORTH LITTLE ROCK

NORTH LITTLE ROCK  
COMMUNITY  
CENTER  
RENOVATIONS

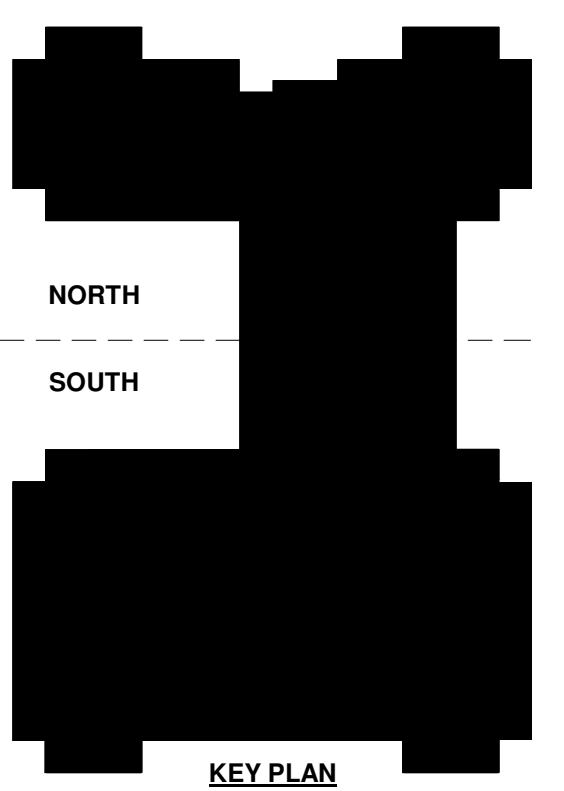
PROJECT NAME \_\_\_\_\_



SEAL \_\_\_\_\_

REVISIONS \_\_\_\_\_

NO.	DESCRIPTION	DATE



GROUND AND SECOND  
FLOOR PLANS - LIFE  
SAFETY

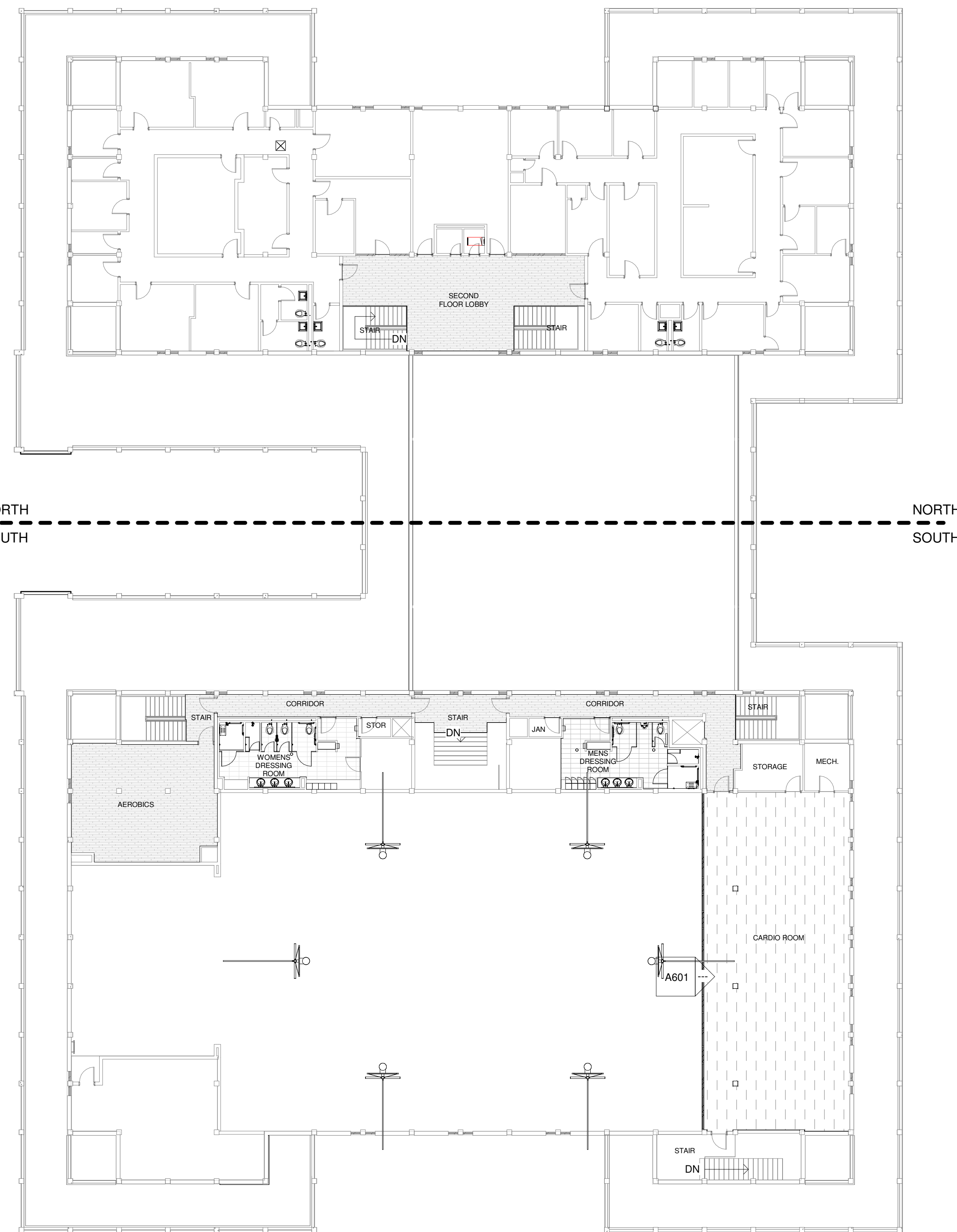
SHEET NAME \_\_\_\_\_

DATE 05/05/2024

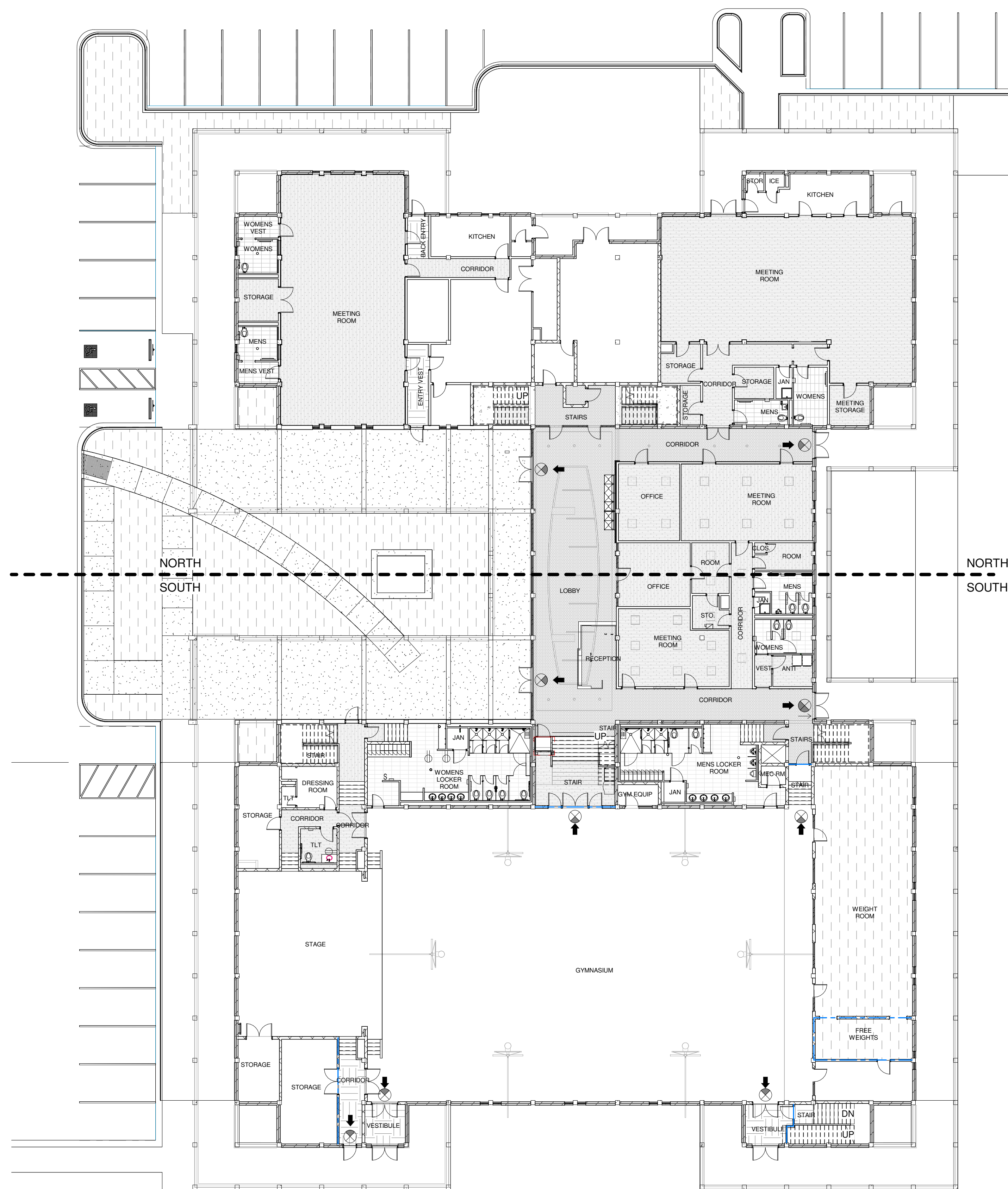
PROJECT NUMBER 161423

SHEET NUMBER \_\_\_\_\_

**G002**



**2** SECOND FLOOR PLAN - LIFE SAFETY  
1/16" = 1'-0"



**3** GROUND FLOOR PLAN - LIFE SAFETY  
1/16" = 1'-0"