

FOR QUESTIONS, CALL THE  
Arkansas Mechanical  
REGION 146  
PHONE: (501) 500 - 5450  
EMAIL: reg146@captiveaire.com

PATENT NUMBERS  
EXHAUST HOODS ND-2/BD-2/SND-2 (CANADA) - CA PATENT 2520435 C.

HOOD INFORMATION – JOB#7175260


HOOD NO	TAG	MODEL	MANUFACTURER	LENGTH	MAX COOKING TEMP	TYPE	APPLIANCE DUTY	DESIGN CFM/FT	TOTAL EXH CFM	EXHAUST PLENUM RISER(S)						HOOD CONSTRUCTION	HOOD CONFIG		
										WIDTH	LENG	HEIGHT	DIA	CFM	VEL		SP	END TO END	ROW
1	KH-FRONT	5424 ND-2	CAPTIVEAIRE	12' 0"	600 DEG	I	HEAVY	170	2040			4'	14"	2040	1908	-1.066'	430 SS WHERE EXPOSED	ALONE	FRONT
2	KH-BACK	5424 ND-2	CAPTIVEAIRE	12' 0"	600 DEG	I	HEAVY	170	2040			4'	14"	2040	1908	-1.066'	430 SS WHERE EXPOSED	ALONE	BACK
3	DH-1	4224 VHB-G	CAPTIVEAIRE	3' 6"	700 DEG	II	N/A	129	450			4'	8"	450	1289	-0.077'	430 SS 100%	ALONE	ALONE

HOOD INFORMATION

HOOD NO	TAG	FILTER(S)					LIGHT(S)			UTILITY CABINET(S)					FIRE SYSTEM PIPING	HOOD HANGING WEIGHT
		TYPE	QTY	HEIGHT	LENGTH	EFFICIENCY @ 7 MICRONS	QTY	TYPE	WIRE GUARD	LOCATION	SIZE	TYPE	SIZE	ELECTRICAL MODEL #	SWITCHES QUANTITY	
1	KH-FRONT	CAPTRATE SOLO FILTER	9	16”	16”	85% SEE FILTER SPEC	3	RECESSED ROUND	NO	LEFT	12”x54”x24”			SC-321110MA	1 LIGHT 1 FAN	835 LBS
2	KH-BACK	CAPTRATE SOLO FILTER	9	16”	16”	85% SEE FILTER SPEC	3	RECESSED ROUND	NO	RIGHT	12”x54”x24”	TANK FS	4.0/4.0/4.0/4.0			1203 LBS
3	DH-1						0									159 LBS

HOOD OPTIONS

HOOD NO	TAG	OPTION
1	KH-FRONT	FIELD WRAPPER 17.00’ HIGH FRONT, LEFT.
		RIGHT SIDESPLASH 122.00’ HIGH X 72.00’ LONG 430 SS VERTICAL.
		RIGHT END STANDOFF (FINISHED) 1’ WIDE 54” LONG INSULATED.
		INSULATION FOR TOP OF HOOD.
		STRUCTURAL FRONT PANEL.
		LEFT VERTICAL END PANEL 27” TOP WIDTH, 21” BOTTOM WIDTH, 80” HIGH INSULATED 430 SS.
2	KH-BACK	RIGHT WALL AS END PANEL.
		FIELD WRAPPER 17.00’ HIGH FRONT, RIGHT.
		LEFT SIDESPLASH 122.00’ HIGH X 72.00’ LONG 430 SS VERTICAL.
		LEFT END STANDOFF (FINISHED) 3” WIDE 54” LONG INSULATED.
		INSULATION FOR TOP OF HOOD.
		STRUCTURAL FRONT PANEL.
3	DH-1	RIGHT VERTICAL END PANEL 27” TOP WIDTH, 21” BOTTOM WIDTH, 80” HIGH INSULATED 430 SS.
		LEFT WALL AS END PANEL.
		FIELD WRAPPER 17.00’ HIGH FRONT, LEFT, RIGHT.



GREASE DUCT & CHIMNEY SPECIFICATIONS:

PROVIDE GREASE DUCT EQUAL TO CAPTIVEAIRE SYSTEMS MODEL “DW” ROUND 20 GAUGE 430 STAINLESS STEEL DUCTWORK. MODEL “DW” IS LISTED TO UL-1978 AND IS INSTALLED USING “V” CLAMP LOCKING CONNECTIONS SEALED WITH 3M FIRE BARRIER 2000 PLUS. MODEL “DW” DOES NOT REQUIRE WELDING PROVIDING IT HAS BEEN INSTALLED PER THE MANUFACTURES INSTALLATION GUIDE.

PROVIDE RATED ACCESS DOORS AT EVERY CHANGE IN DIRECTION AND EVERY 12’ ON CENTER. PER MANUFACTURES LISTING MODEL “DW” HORIZONTAL RUNS LESS THAN 75 FT. CAN BE SLOPED 1/16” PER 12”, HORIZONTAL RUNS MORE THAN 75 FT. CAN BE SLOPED 3/16” PER 12”. DUCT SHOULD BE SLOPED AS MUCH AS POSSIBLE TO REDUCE THE CHANCE OF GREASE ACCUMULATION IN HORIZONTAL RUNS.

IF THE DUCT OR CHIMNEY IS WITHIN 18 INCHES OF COMBUSTIBLE MATERIAL, PROVIDE UL-2221 OR UL-103 HT LISTED DOUBLE WALL GREASE DUCT OR DOUBLE WALL CHIMNEY EQUAL TO CAPTIVEAIRE SYSTEMS MODEL “DW- 2R, 2R TYPE HT, 3R, OR 3Z” ROUND 20 GAUGE 430 STAINLESS INNER DUCT INSULATED WITH A 24 GAUGE 430 STAINLESS OUTER SHELL.

CAPTIVEAIRE SYSTEMS RECOMMENDS THE USE OF LISTED, PRE-FABRICATED ROUND GREASE EXHAUST DUCT TO REDUCE STATIC PRESSURE IN THE SYSTEM, MINIMIZE INSTALLATION AND INSPECTION TIMES, AND ENSURE DUCT IS LIQUID TIGHT

VERIFY CEILING HEIGHT

\_\_\_\_' - \_\_\_\_"

HEIGHT REQUIRED TO VERIFY THAT HOOD FITS SPACE AND TO SIZE THE ENCLOSURE PANELS

HVAC DISTRIBUTION NOTE

HIGH VELOCITY DIFFUSERS OR HVAC RETURNS SHOULD NOT BE PLACED WITHIN TEN (10) FEET OF THE EXHAUST HOOD. PERFORATED DIFFUSERS ARE RECOMMENDED.

CUSTOMER APPROVAL TO MANUFACTURE:

APPROVED AS NOTED	<input type="checkbox"/>
APPROVED WITH NO EXCEPTION TAKEN	<input type="checkbox"/>
REVISE AND RESUBMIT	<input type="checkbox"/>
SIGNATURE _____	
YOUR TITLE _____	DATE _____

SPECIFICATION: CAPTRATE® GREASE-STOP® SOLO FILTER

THE CAPTRATE GREASE-STOP SOLO FILTER IS A SINGLE-STAGE FILTER FEATURING A UNIQUE S-Baffle DESIGN IN CONJUNCTION WITH A SLOTTED REAR Baffle DESIGN, TO DELIVER EXCEPTIONAL FILTRATION EFFICIENCY.

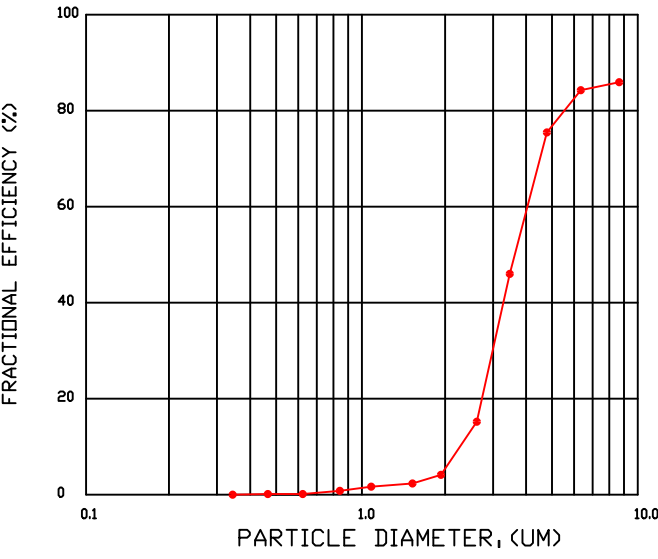
FILTER IS STAINLESS STEEL CONSTRUCTION, AND SIZED TO FIT INTO STANDARD 2-INCH DEEP HOOD CHANNEL(S).

UNITS SHALL INCLUDE STAINLESS STEEL HANDLES AND A FASTENING DEVICE TO SECURE THE TWO COMPONENTS WHEN ASSEMBLED.

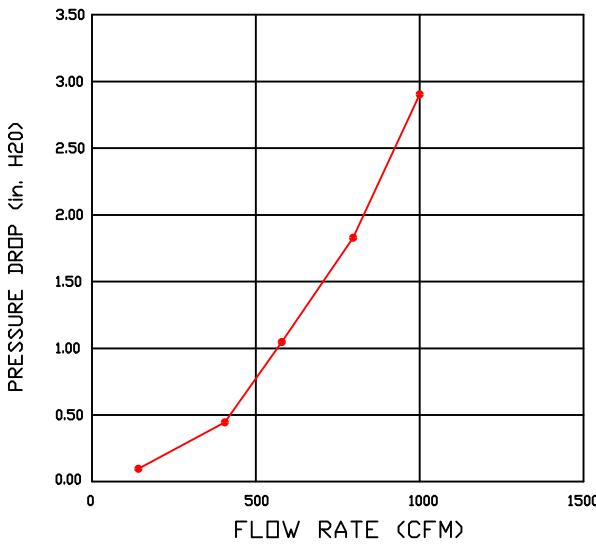
GREASE EXTRACTION EFFICIENCY PERFORMANCE SHALL REMOVE AT LEAST 75% OF GREASE PARTICLES FIVE MICRONS IN SIZE, AND 85% GREASE PARTICLES SEVEN MICRONS IN SIZE AND LARGER, WITH A CORRESPONDING PRESSURE DROP NOT TO EXCEED 1.0 INCHES OF WATER GAUGE.

THE CAPTRATE GREASE-STOP SOLO WAS TESTED TO ASTM STANDARD ASTM F2519-05. MANUFACTURER APPROVED FOR USE IN SOLID FUEL APPLICATIONS AS A SPARK ARRESTER.

EFFICIENCY VS. PARTICLE DIAMETER



PRESSURE DROP VS. FLOW RATE



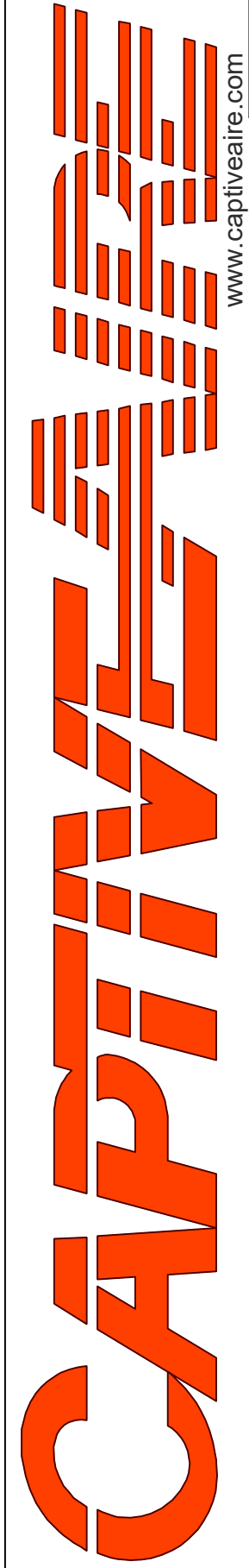
CAPTRATE FILTERS ARE BUILT IN COMPLIANCE WITH:

- NFPA #96.
- NSF STANDARD #2.
- UL STANDARD #1046.
- INT. MECH. CODE (IMC).
- ULC-S649.



REVISIONS

DESCRIPTION	DATE:
Δ	
Δ	
Δ	
Δ	



Arkansas Mechanical

www.captiveaire.com

140 Southwinds Rd. Suite 133, Farmington, AR, 72730 PHONE: (501) 500 - 5450 FAX: 5017106670 EMAIL: reg146@captiveaire.com

English Pub - FARS

Little Rock, AR, 72201

DATE: 11/19/2024

DWG.#: 7175260

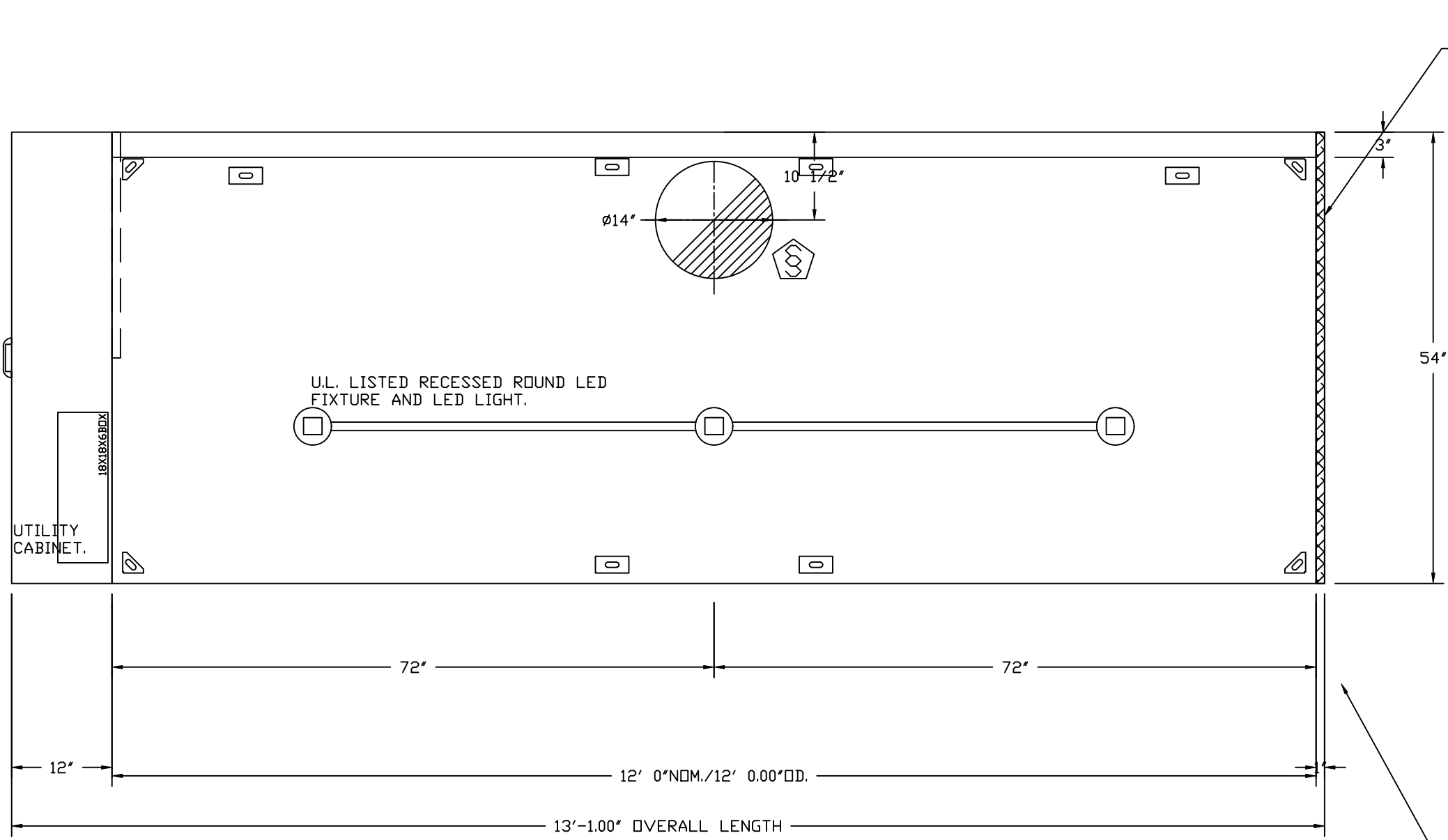
DRAWN BY: Josh I 146

SCALE: 3/4" = 1'-0"

MASTER DRAWING

SHEET NO.

1

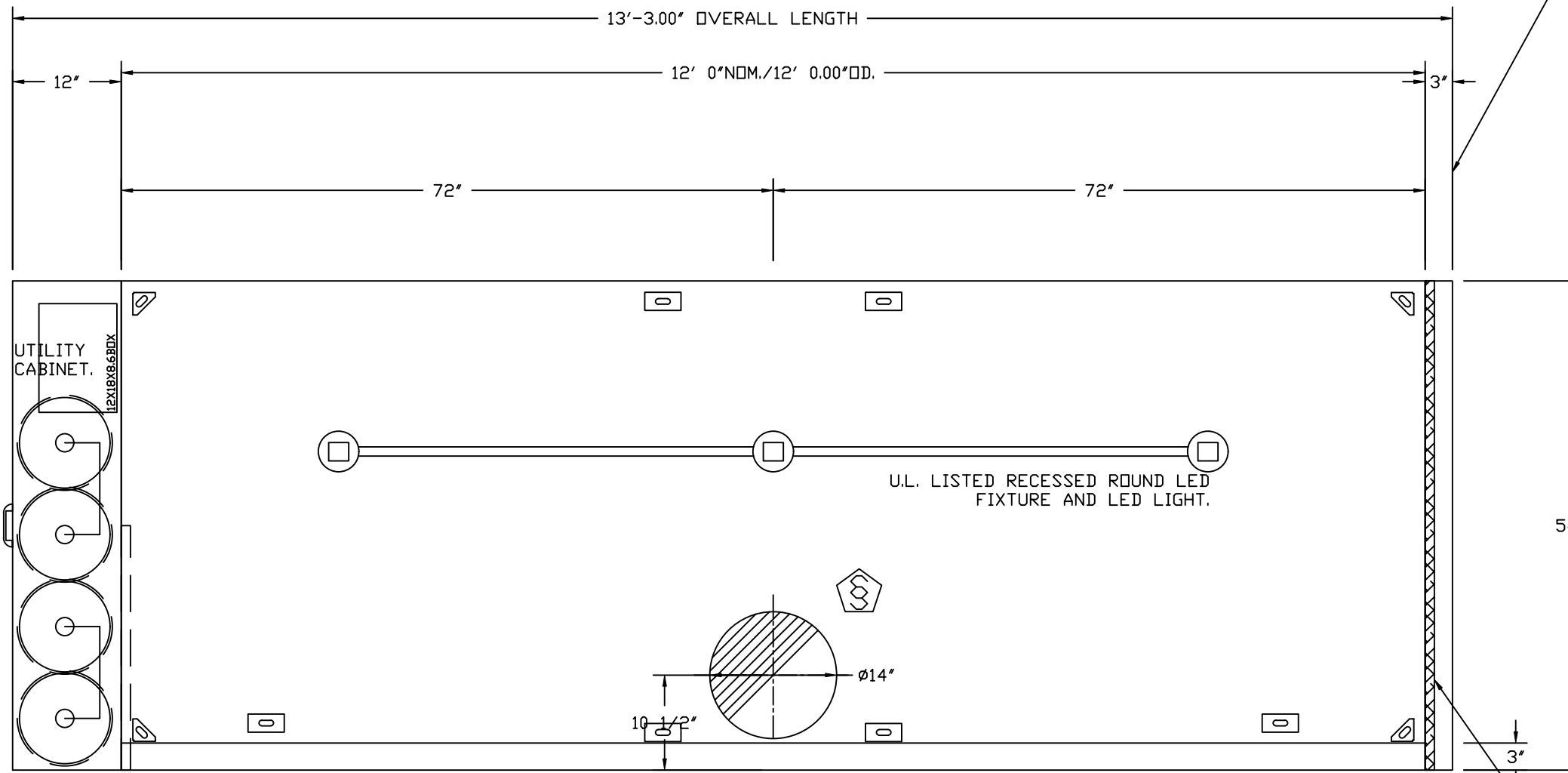


PLAN VIEW - HOOD #1 (KH-FRONT)  
12' 0.00" LONG 5424ND-2

NOTE: ADDITIONAL HANGING ANGLES PROVIDED FOR HOODS 12' AND LONGER.

NOTE: ADDITIONAL HANGING ANGLES PROVIDED FOR HOODS 12' AND LONGER.

PLAN VIEW - HOOD #2 (KH-BACK)  
12' 0.00" LONG 5424ND-2



CLEARANCE TO COMBUSTIBLES

HOODS #	SURFACE	*CLEARANCE
1,2	TOP	0'
	FRONT	0'
	BACK	18"
	LEFT	0'
	RIGHT	0'

- \*0" CLEARANCE TO COMBUSTIBLES CONFORMS TO UL710 STANDARD.

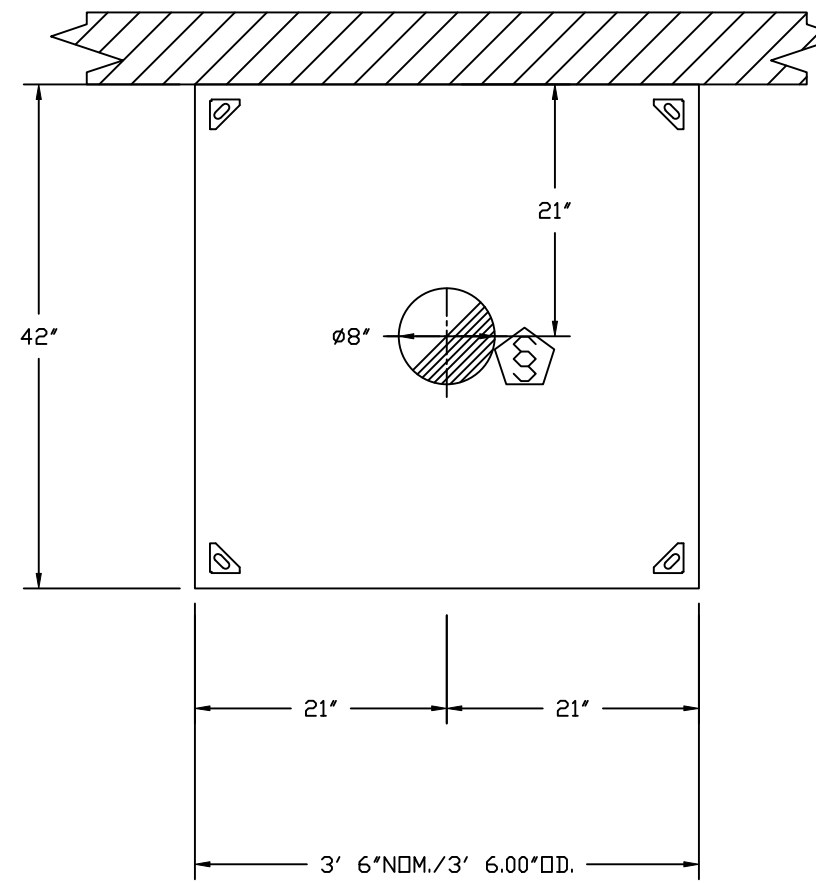
- HOOD MOUNTED UTILITY CABINETS REQUIRE 36" SERVICE CLEARANCE.

1" LAYER OF INSULATION  
FACTORY INSTALLED IN  
100" END STANDOFF MEETS  
0" REQUIREMENTS CLEARANCE  
TO COMBUSTIBLE SURFACES.

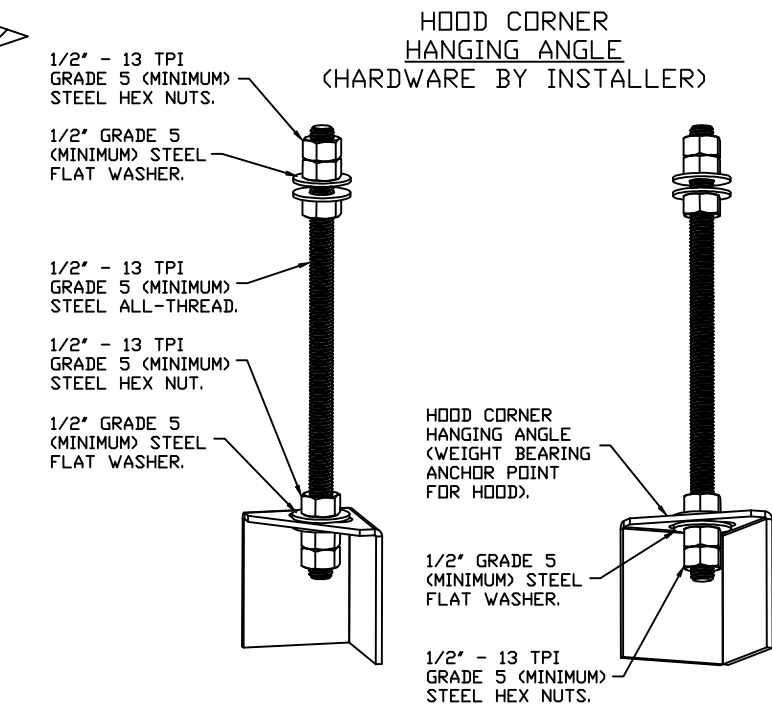
INSTALLER MUST CONFIRM HOOD IS INSTALLED SUCH THAT THE SPECIFIED WALL, ACTING AS AN END PANEL, IS MATED TIGHT TO THE CORRECT END OF HOOD TO ACHIEVE A REDUCED MINIMUM EXHAUST CFM LISTING. NON-COMPLIANCE WILL NULLIFY THE ETL LISTING, VOID THE MANUFACTURER'S WARRANTY, AND HOLD THE CONTRACTOR LIABLE FOR ANY AND ALL LOSSES, COSTS, AND EXPENSES RELATED TO THE NON-COMFORMANCE OF THE MANUFACTURER'S SPECIFIED INSTRUCTION. THE WALL ACTING AS AN END PANEL MUST EXTEND NO LESS THAN 20" FROM THE INTERSECTING WALL ON WHICH HOOD IS MOUNTED AND MUST EXTEND NO LESS THAN 20" UNDER BOTTOM OF HOOD TO BE ELIGIBLE FOR REDUCED MINIMUM EXHAUST CFM LISTING.

INSTALLER MUST CONFIRM HOOD IS INSTALLED SUCH THAT THE SPECIFIED WALL, ACTING AS AN END PANEL, IS MATED TIGHT TO THE CORRECT END OF HOOD TO ACHIEVE A REDUCED MINIMUM EXHAUST CFM LISTING. NON-COMPLIANCE WILL NULLIFY THE ETL LISTING, VOID THE MANUFACTURER'S WARRANTY, AND HOLD THE CONTRACTOR LIABLE FOR ANY AND ALL LOSSES, COSTS, AND EXPENSES RELATED TO THE NON-COMFORMANCE OF THE MANUFACTURER'S SPECIFIED INSTRUCTION. THE WALL ACTING AS AN END PANEL MUST EXTEND NO LESS THAN 20" FROM THE INTERSECTING WALL ON WHICH HOOD IS MOUNTED AND MUST EXTEND NO LESS THAN 20" UNDER BOTTOM OF HOOD TO BE ELIGIBLE FOR REDUCED MINIMUM EXHAUST CFM LISTING.

1" LAYER OF INSULATION  
FACTORY INSTALLED IN  
3.00" END STANDOFF MEETS  
0" REQUIREMENTS CLEARANCE  
TO COMBUSTIBLE SURFACES.

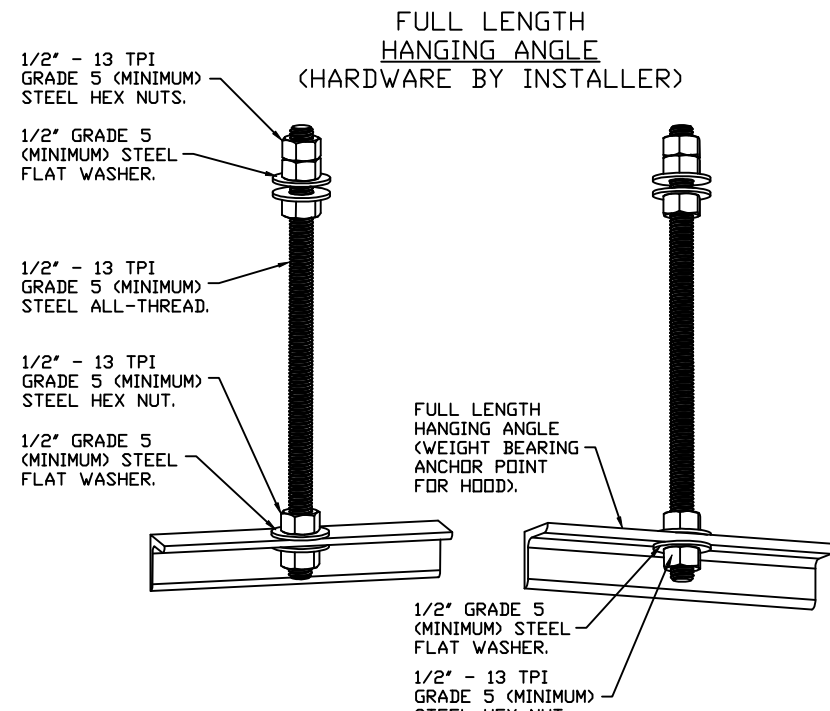


PLAN VIEW - HOOD #3 (DH-1)  
3' 6.00" LONG 4224VHB-G



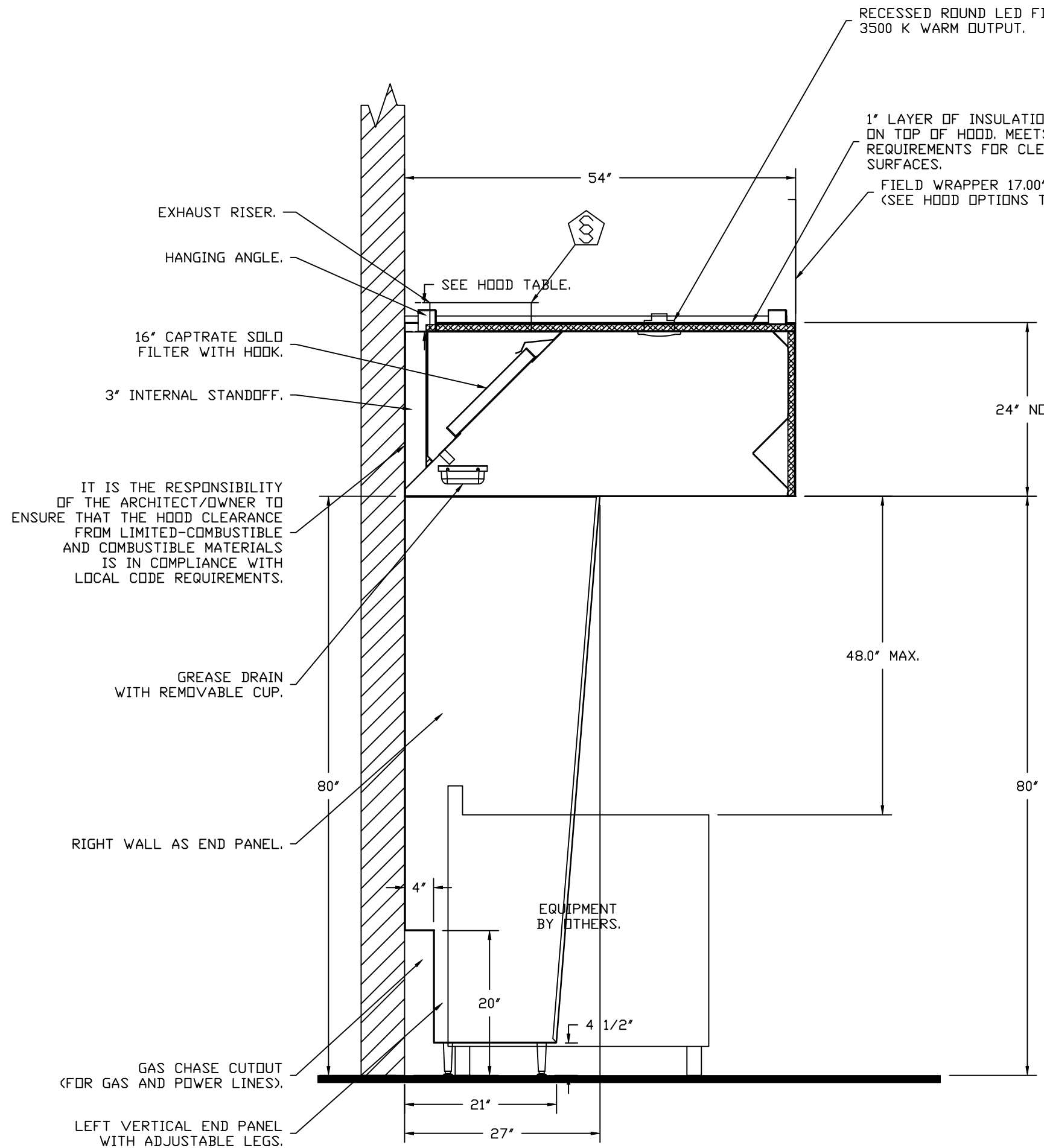
ASSEMBLY INSTRUCTIONS

HANGING ANGLE MUST BE SUPPORTED WITH 1/2" - 13 TPI GRADE 5 (MINIMUM) ALL-THREAD, SANDWICH HANGING ANGLES AND CEILING ANCHOR POINTS WITH 1/2" GRADE 5 (MINIMUM) STEEL FLAT WASHERS AND 1/2" - 13 TPI GRADE 5 (MINIMUM) HEX NUTS AS SHOWN. MUST USE DOUBLED HEX NUT CONFIGURATION BENEATH HOOD HANGING ANGLES AND ABOVE CEILING ANCHORS. MAINTAIN 1/4" OF EXPOSED THREADS BENEATH BOTTOM HEX NUT. TORQUE ALL HEX NUTS TO 57 FT-LBS.



ASSEMBLY INSTRUCTIONS

HANGING ANGLE MUST BE SUPPORTED WITH 1/2" - 13 TPI GRADE 5 (MINIMUM) ALL-THREAD, SANDWICH HANGING ANGLES AND CEILING ANCHOR POINTS WITH 1/2" GRADE 5 (MINIMUM) STEEL FLAT WASHERS AND 1/2" - 13 TPI GRADE 5 (MINIMUM) HEX NUTS AS SHOWN. MUST USE DOUBLED HEX NUT CONFIGURATION ABOVE CEILING ANCHORS. SINGLE HEX NUT BENEATH HANGING ANGLE IS ACCEPTABLE FOR FULL LENGTH HANGING ANGLES. MAINTAIN 1/4" OF EXPOSED THREADS BENEATH BOTTOM HEX NUT. TORQUE ALL HEX NUTS TO 57 FT-LBS.



SECTION VIEW - MODEL 5424ND-2  
HOOD - #1 (KH-FRONT)

REVISIONS

DESCRIPTION	DATE:

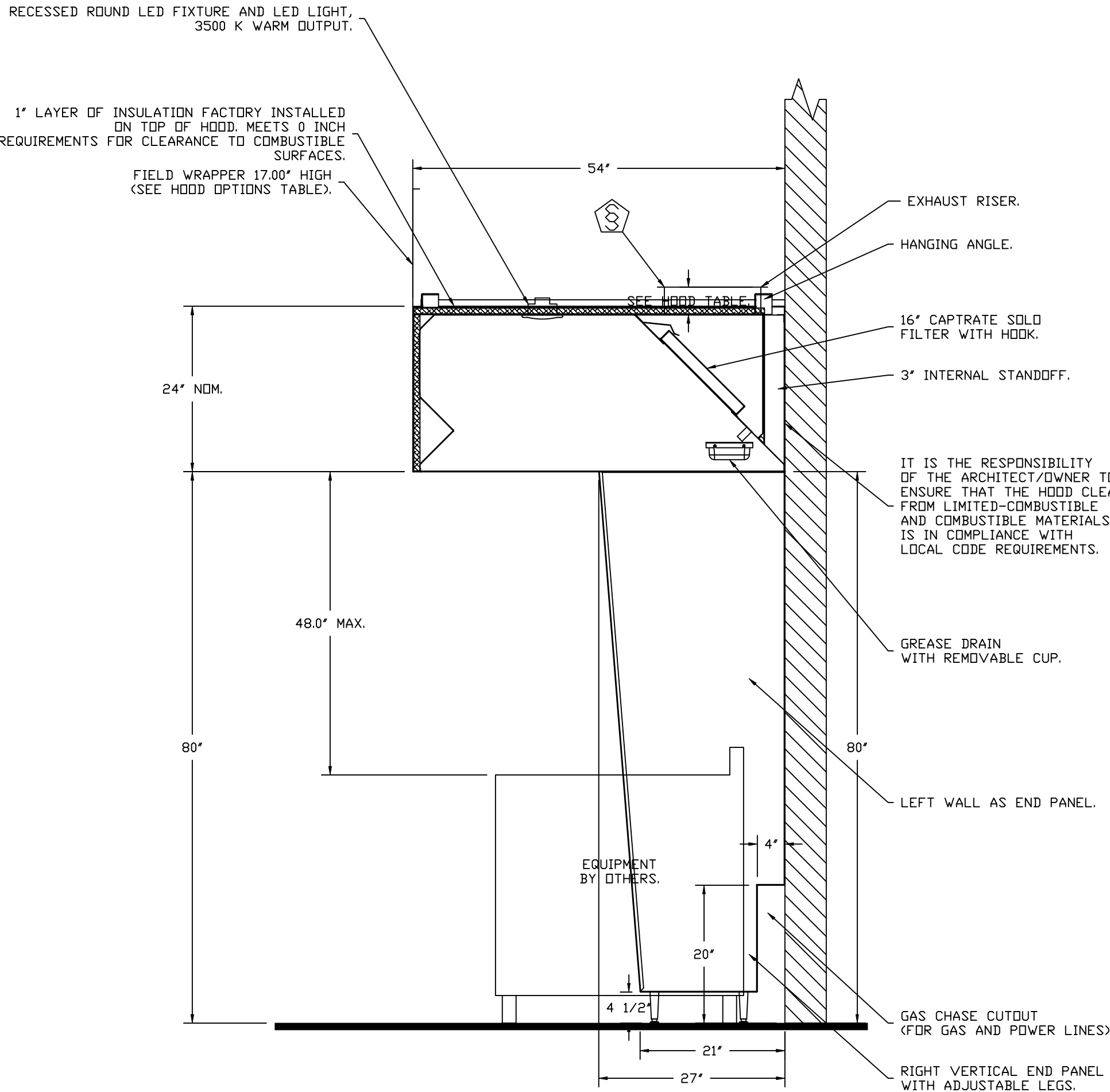
English Pub - FARS  
Little Rock, AR, 72201

DATE: 11/19/2024  
DWG.#: 7175260  
DRAWN BY: Josh I 146  
SCALE: 3/4" = 1'-0"  
MASTER DRAWING

SHEET NO.  
2

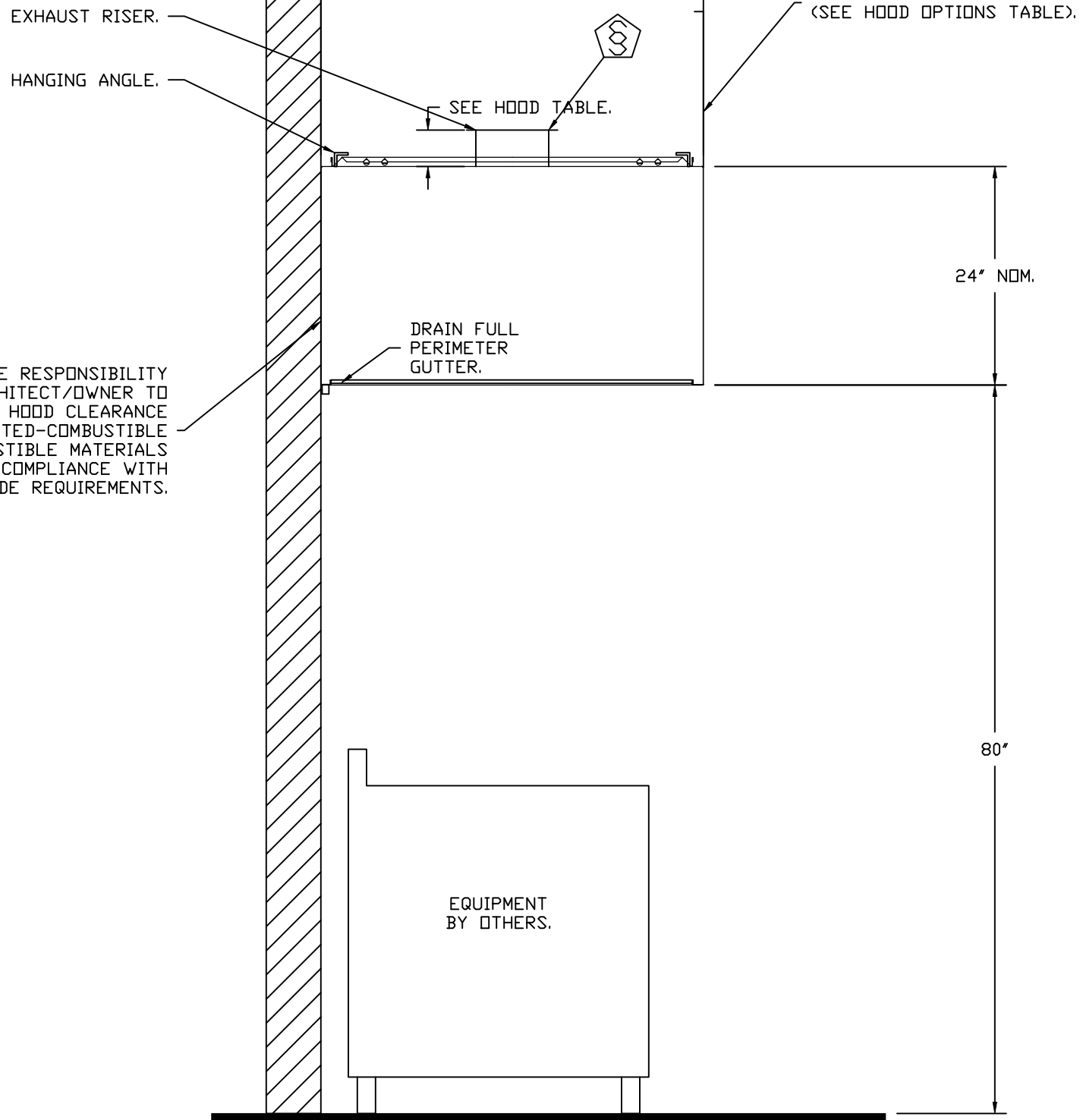
CAPTIVE

Arkansas Mechanical  
www.captiveair.com  
140 Southwinds Rd. Suite 133, Farmington, AR, 72730 PHONE: (501) 500-5450 FAX: 501-106670 EMAIL: reg146@captiveair.com



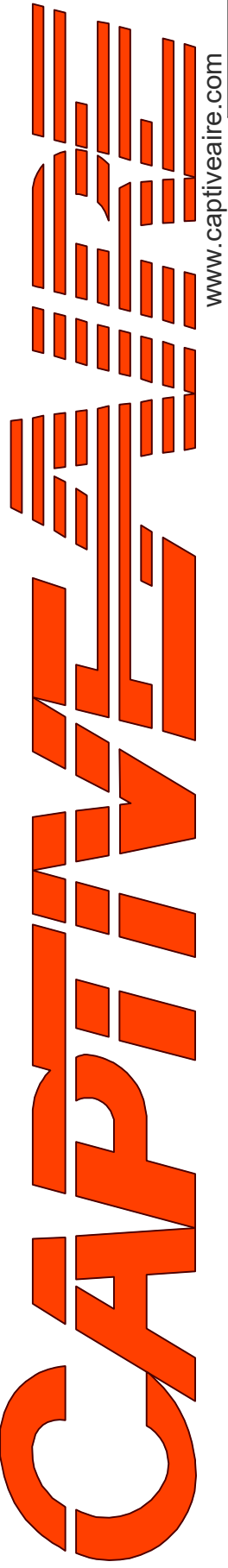
SECTION VIEW - MODEL 5424ND-2  
HOOD - #2 (KH-BACK)

IT IS THE RESPONSIBILITY OF THE ARCHITECT/OWNER TO ENSURE THAT THE HOOD CLEARANCE FROM LIMITED-COMBUSTIBLE AND COMBUSTIBLE MATERIALS IS IN COMPLIANCE WITH LOCAL CODE REQUIREMENTS.



SECTION VIEW - MODEL 4224VHB-C  
HOOD - #3 (DH-1)

REVISIONS	
DESCRIPTION	DATE:
△	
△	
△	
△	



**Arkansas Mechanical**  
www.captiveair.com  
140 Southwinds Rd. Suite 133, Farmington, AR, 72730 PHONE: (501) 500 - 5450 FAX: 501-706670 EMAIL: reg146@captiveair.com

English Pub - FARS  
Little Rock, AR, 72201

DATE: 11/19/2024

DWG.#:  
7175260

DRAWN BY: Josh I 146

SCALE:  
3/4" = 1'-0"

MASTER DRAWING

SHEET NO.  
3

FIRE SYSTEM INFORMATION – JOB#7175260

FIRE SYSTEM NO	TAG	TYPE	SIZE	MAX FP	DESIGN FP	INSTALLATION	
						SYSTEM	LOCATION ON HOOD
1		TANK FS	4.0/4.0/4.0/4.0	80	74	FIRE CABINET RIGHT	RIGHT, HOOD 2

GAS VALVE(S)

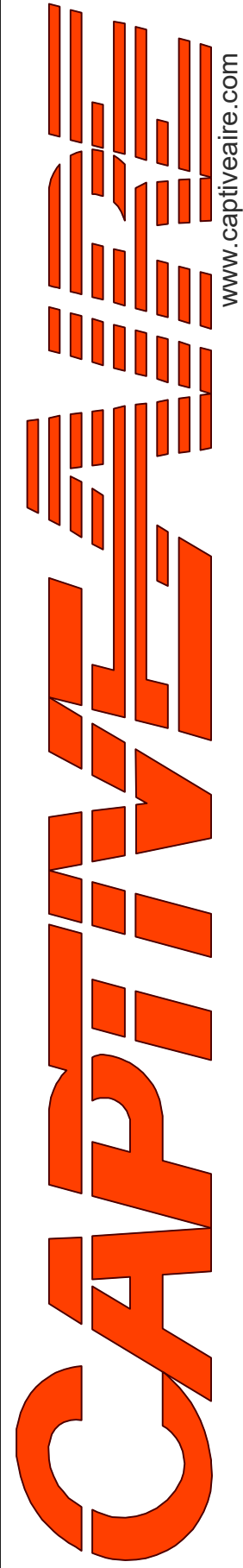
FIRE SYSTEM NO	TAG	TYPE	SIZE	SUPPLIED BY
1		SC ELECTRICAL	2.000	CAPTIVEAIRE SYSTEMS

FIRE SYSTEM PARTS LIST KEY

FIRE SYSTEM NO	TAG	KEY NUMBER – PART DESCRIPTION	QTY BY FACTORY	QTY BY DIST
1		0 – 0 – TANK FIRE SUPPRESSION MAINTENANCE GUIDE UTILITY CABINET LABEL SHEET.	1	0
		0 – 0 – TANK FIRE SUPPRESSION POST-DISCHARGE PROCEDURE UTILITY CABINET LABEL SHEET.	1	0
		0 – 0 – 12-F28021-32144-DT-360 DUCT FIRE THERMOSTAT WITH 12 FOOT WIRE LEADS. NO, CLOSE ON TEMP RISE AT 360°F. (A0034310).	2	0
		0 – 0 – 4429K153 1/2" MALE NPT TO 1/2" FEMALE NPT ELBOW, BRASS.	4	0
		0 – 0 – 4429K422 1/2" X 1/4" BRASS REDUCING BUSHING.	2	0
		0 – 0 – 79525 1/2" 90 PRO-PRESS ELBOW WITH 1/2" NPT FEMALE CONNECTION, VIEGA.	2	0
		0 – 0 – 79580 1/2" X 1/2" PRO-PRESS TEE X 1/2" NPT FEMALE CONNECTION, VIEGA.	4	0
		0 – 0 – 87-120042-001 SECONDARY ACTUATOR VALVE (SVA) – SINGLE ACTUATOR, REQUIRES PRIMARY RELEASE ACTUATOR, TANK FIRE SUPPRESSION.	3	0
		0 – 0 – 87-120045-001 HOSE, SECONDARY ACTUATOR HOSE, 7.5" BRAIDED STAINLESS STEEL, TANK FIRE SUPPRESSION.	3	0
		0 – 0 – 87-300001-001 TANK – PRESSURIZED TANK USED FOR TANK FIRE SUPPRESSION.	4	0
		0 – 0 – 87-300030-001 PRIMARY ACTUATOR KIT (PAK) – ACTUATOR AND RELEASE SOLENOID ASSEMBLY, ONE NEEDED PER FIRE SYSTEM, SUPERVISED, TANK FIRE SUPPRESSION.	1	0
		0 – 0 – 87-300152-001 HARDWARE, SVA BOLTS, TANK FIRE SUPPRESSION.	16	0
		0 – 0 – 98694A115 HARDWARE, DATANKLOCK LOCKING BRACKET SQUARE NUTS 5/16" ZINC, TANK FIRE SUPPRESSION.	8	0
		0 – 0 – A0034332 JUNCTION BOX FOR MANUAL PULL STATION. 1.5" DEEP BACK BOX, RED COLOR.	1	0
		0 – 0 – A31484 1/4" NPT SCHRADER VALVE AND CAP, JB INDUSTRIES. 1/4" FLARE X 1/4" MPT HALF UNION. USED ON TANK SERVICE PORT.	2	0
		0 – 0 – DATANKLOCK DISCHARGE ADAPTER TANK LOCKING PLATE FOR FIRE SYSTEM TANK INSTALLATION IN UTILITY CABINETS, TANK FIRE SUPPRESSION.	4	0
		0 – 0 – SLPCDN-03FT SUPERVISED LOOP CONNECTION KIT. CONTAINS THE PARTS NEEDED TO CONNECT THE SUPERVISED LOOP BETWEEN END TO END HOODS WITH LESS THAN A 2' GAP. KIT CONTAINS 5 FEET OF BLACK MG WIRE, 5 FEET OF TAN MG WIRE, 3 FEET OF FLEXIBLE CONDUIT, AND TWO 7/8" CONNECTORS.	1	0
		0 – 0 – SLPCDN-15FT SUPERVISED LOOP CONNECTION KIT. CONTAINS THE PARTS NEEDED TO CONNECT THE SUPERVISED LOOP BETWEEN END TO END HOODS WITH LESS THAN A 14' GAP OR BACK TO BACK HOODS. KIT CONTAINS 17 FEET OF BLACK MG WIRE, 17 FEET OF TAN MG WIRE, 15 FEET OF FLEXIBLE CONDUIT, AND TWO 7/8" CONNECTORS.	2	0
		0 – 0 – TANK STRAP TANK STRAP – USED FOR TANK FIRE SUPPRESSION.	12	0
		0 – 0 – TFS-UCTANKBRACKET TANK BRACKET FOR FIRE SYSTEM TANK INSTALLATION IN UTILITY CABINETS, TANK FIRE SUPPRESSION.	4	0
		0 – 0 – WK-283952-000 DISCHARGE ADAPTER, TANK FIRE SUPPRESSION.	4	0
		34 – 34 – A0034331 24VDC SINGLE ACTION MANUAL ACTUATION DEVICE (PUSH/PULL STATION) WITH PROTECTIVE COVER, ONE (1) NORMALLY OPEN CONTACT. RED COLOR.	1	0

REVISIONS



DESCRIPTION	DATE:
Δ	
Δ	
Δ	
Δ	



Arkansas Mechanical

140 Southwinds Rd. Suite 133, Farmington, AR, 72730 PHONE: (501) 500 - 5450 FAX: 5017106670 EMAIL: reg146@captiveaire.com

www.captiveaire.com



English Pub – FARS  
Little Rock, AR, 72201

DATE: 11/19/2024

DWG.#:  
7175260

DRAWN  
BY: Josh I 146

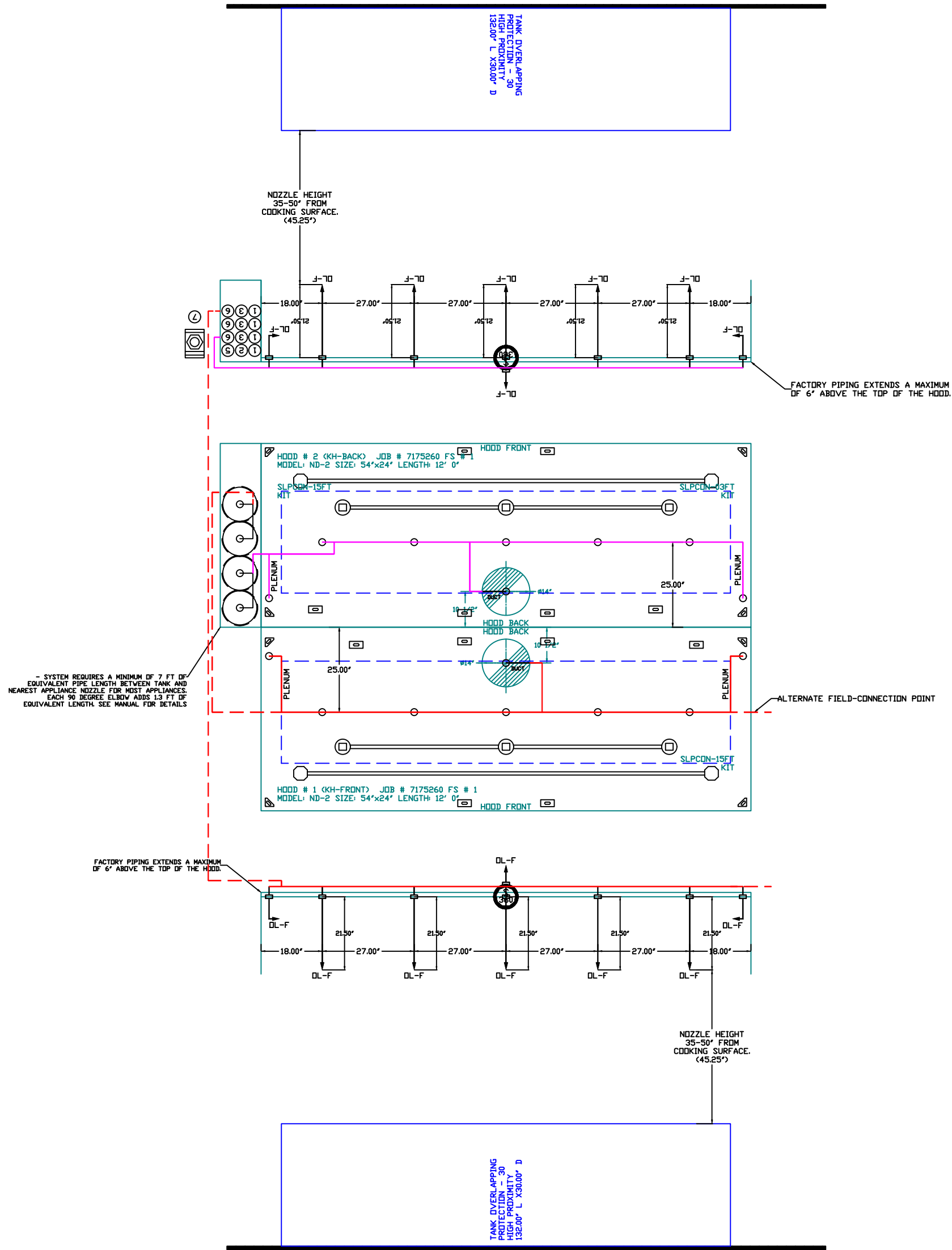
SCALE:  
3/4" = 1'-0"

MASTER DRAWING

SHEET NO.

4





- NOTES
- FIELD PIPE DROPS AS SHOWN
  - PIPING, ELBOWS, TEES, AND NOZZLES SUPPLIED BY CAS
  - FIELD INSTALLED DROP FACTORY WILL PROVIDE QTY 2 60IN LONG PIECES OF CHROME
  - PLATED PIPING SHIPPED LOOSE TO BE FIELD-INSTALLER
  - SHIP LOOSE DROP FACTORY WILL PROVIDE THE EXACT CHROME PIPE LENGTH NEEDED
  - SHIPPED LOOSE TO BE FIELD-INSTALLER
  - RELOCATE NOZZLES IF FLOW PATTERN IS BLOCKED BY SHELVEING, SALAMANDERS, ETC
  - OVERLAPPING COVERAGE SHALL NOT BE USED ON ANY APPLIANCE WITH AN OBSTRUCTION.
  - IF APPLICABLE, EXTENDED PRE-PIPED DROPS ARE SHIPPED LOOSE.
  - FACTORY PIPING EXTENDS A MAXIMUM OF 6' ABOVE THE TOP OF THE HOOD.
  - APPLIANCE DIMENSIONS LISTED REPRESENT THE COOKING SURFACE SIZE, NOT THE OVERALL APPLIANCE SIZE.
  - THIS FIRE SYSTEM COMPLIES WITH UL 300 REQUIREMENTS.
  - DL-F NOZZLE PART NUMBER REPLACES 3070-3/BH-10-SS
  - JOB #: 7175260.
  - JOB NAME: ENGLISH PUB - FARS.
  - SYSTEM SIZE: TANK-SP-4 DESIGN FPI: 74, MAXIMUM FPI: 80.
  - HOOD # 1 12' 0.00' LONG x 54" WIDE x 24" HIGH.
  - RISER # 1 SIZE: 1 1/2" DIA.
  - HOOD # 1 METAL BLOW-OFF CAPS INCLUDED.
  - HOOD # 2 12' 0.00' LONG x 54" WIDE x 24" HIGH.
  - RISER # 1 SIZE: 1 1/2" DIA.
  - HOOD # 2 METAL BLOW-OFF CAPS INCLUDED.
  - HEAVY-DUTY APPLIANCES (RATED 600°F) WILL REQUIRE AN ADDITIONAL DOWNSTREAM FIRESTAT IN THE EVENT THAT THE DUCTWORK CONTAINS ANY HORIZONTAL RUNS OVER 6' IN LENGTH.
  - MEDIUM TO LIGHT-DUTY APPLIANCES (RATED 450°F) WILL NOT REQUIRE ANY ADDITIONAL DOWNSTREAM DETECTION.

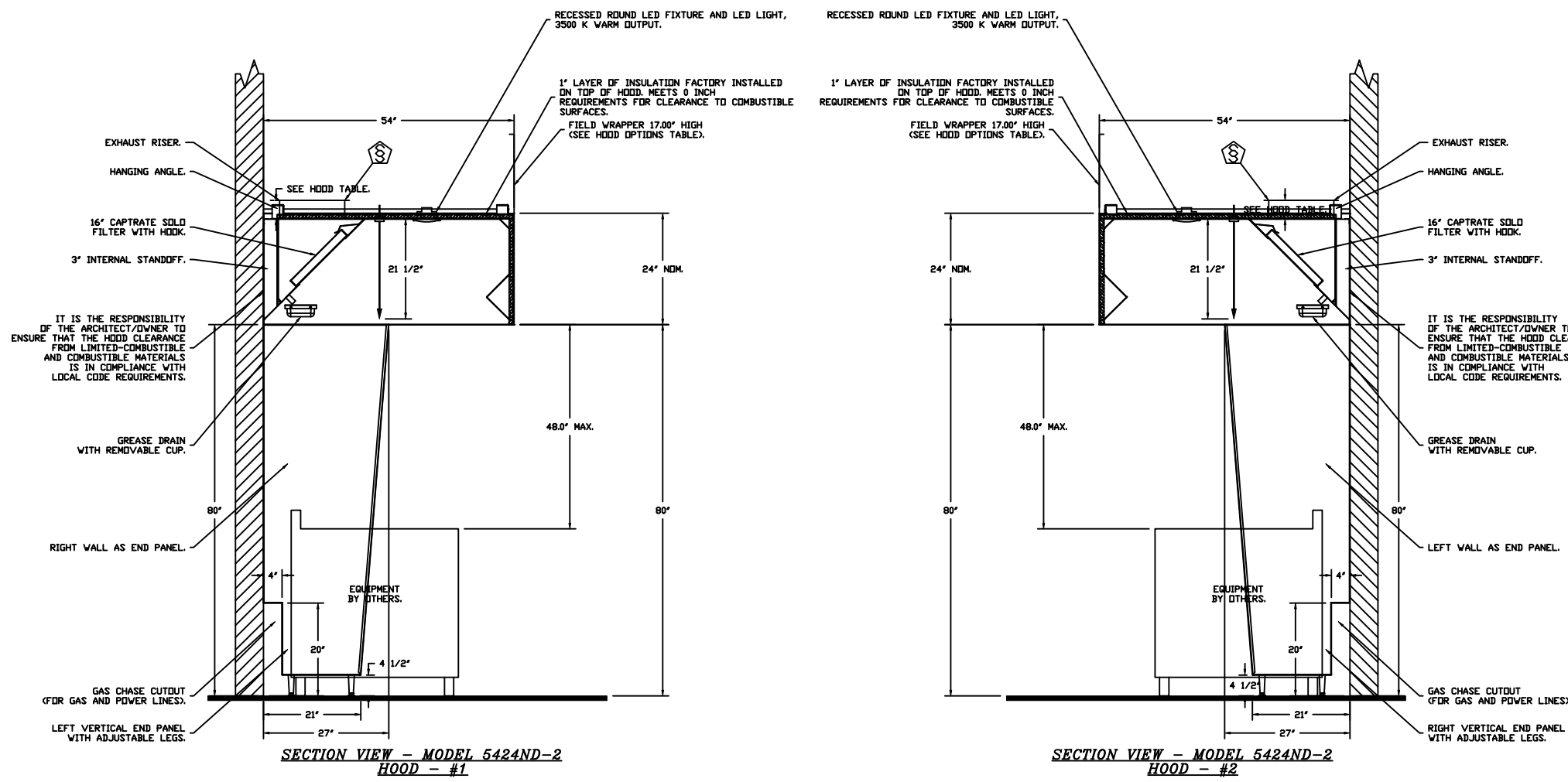
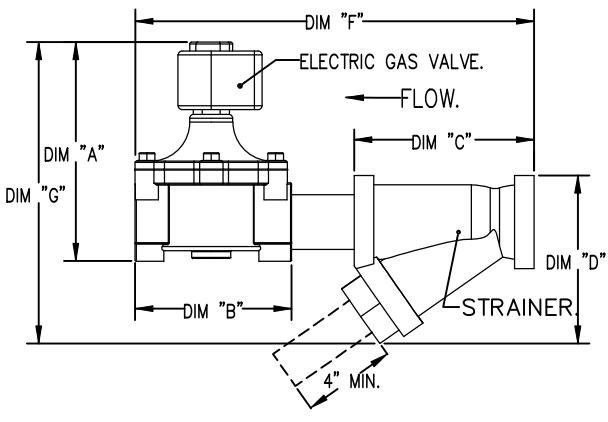
AGENT DISTRIBUTION PIPING LIMITATIONS		
PIPE SECTION		MAX PIPE LENGTH (FT)
MAX SUPPLY LINE TO FIRST OVERLAPPING NOZZLE		42
OVERLAPPING NOZZLE APPLIANCE BRANCH		10
DEDICATED NOZZLE APPLIANCE BRANCH		10

- LEGEND - FIRE CABINET TANK SYSTEM
- 4 GALLON TANK.
  - PRIMARY ACTUATOR RELEASE.
  - SECONDARY ACTUATOR RELEASE.
  - PRESSURE SUPERVISION SWITCH.
  - PRIMARY HOSE ASSEMBLY.
  - SECONDARY HOSE ASSEMBLY.
  - REMIOTE MANUAL ACTUATION DEVICE.

INCLUDES: FIELD INSTALLATION AND HOOKUP DURING NORMAL BUSINESS HOURS BY CERTIFIED INSTALLERS ONLY IN THE LOCATION NOTED ABOVE. TWO SITE VISITS ONLY ONE VISIT TO SET HULL STATION & SYSTEM HOOKUP AND ONE VISIT FOR ONE TEST. ADDITIONAL VISITS WILL RESULT IN ADDITIONAL CHARGES. USE MECHANICAL OR ELECTRICAL GAS VALVE PER SYSTEM AT A MAXIMUM SIZE OF 1/2" PERMANENT AND SYSTEM TEST EXCLUDED. UNDER LABOR & PREVAILING WAGE GLASSER & WAGES WILL BE ADDED IF APPLICABLE. GAS VALVE INSTALLATION, ELECTRICAL HOOKUP AND CONNECTIONS, HANDING OF FIRE CABINET, SHUNT TRIP, HANDHELD EXTINGUISHERS, ON-SITE RE-PIPPING DUE TO EQUIPMENT LAYOUT CHANGES.

GAS VALVES AND STRAINERS											
GAS VALVE SIZES				GAS VALVE DIMENSIONS				INSTALLATION		PART NUMBERS	
TYPE	SIZE	VOLTAGE	MIN. INLET PRESSURE	MAX. INLET PRESSURE	FLOW AT 1 IN. W.C. DROP	FLOW AT 1 IN. W.C. DROP	FLOW AT 1 IN. W.C. DROP	FLOW AT 1 IN. W.C. DROP	FLOW AT 1 IN. W.C. DROP	INSTALLATION	PART NUMBERS
ELECTRICAL	2"	120 VAC	0 PSIG	15 PSIG (0 IN. W.C.)	2,940,500 BTU/HR (0 IN. W.C.)	1,900,000 BTU/HR (0 IN. W.C.)	1,900,000 BTU/HR (0 IN. W.C.)	1,900,000 BTU/HR (0 IN. W.C.)	1,900,000 BTU/HR (0 IN. W.C.)	HORIZONTAL	8214202
ELECTRICAL	2"	120 VAC	0 PSIG	15 PSIG (0 IN. W.C.)	2,940,500 BTU/HR (0 IN. W.C.)	1,900,000 BTU/HR (0 IN. W.C.)	1,900,000 BTU/HR (0 IN. W.C.)	1,900,000 BTU/HR (0 IN. W.C.)	1,900,000 BTU/HR (0 IN. W.C.)	HORIZONTAL	8214202

TO CALCULATE GAS FLOW FOR OTHER THAN 1 IN. W.C. PRESSURE DROP: NEW BTU/HR = (BTU/HR AT 1 IN. W.C.) x (NEW PRESSURE DROP / 1 IN. W.C.)  
TO CALCULATE GAS FLOW FOR OTHER THAN GAS SPECIFIC GRAVITY: NEW BTU/HR = (BTU/HR AT 0.64) x (0.64 / NEW SPECIFIC GRAVITY)  
TO CALCULATE GAS FLOW FOR OTHER THAN GAS SPECIFIC GRAVITY: NEW BTU/HR = (BTU/HR AT 0.64) x (0.64 / NEW SPECIFIC GRAVITY)  
TO CALCULATE GAS FLOW FOR OTHER THAN GAS SPECIFIC GRAVITY: NEW BTU/HR = (BTU/HR AT 0.64) x (0.64 / NEW SPECIFIC GRAVITY)



REVISIONS

DESCRIPTION	DATE:

English Pub - FARS

Little Rock, AR, 72201

DATE: 11/19/2024

DWG.#: 7175260

DRAWN BY: Josh I 146

SCALE: 3/8" = 1'-0"

MASTER DRAWING

SHEET NO.

5

CAPTIVE

Arkansas Mechanical

www.captiveire.com

140 Southwinds Rd. Suite 133, Farmington, AR, 72730 PHONE: (501) 500 - 5450 FAX: 501-7106670 EMAIL: jrg146@captiveire.com