

KEYED NOTES:

- 1 REFER TO CIVIL PLANS FOR CONTINUATION.
- 2 SANITARY SEWER AND GREASE WASTE LINES ARE AT FL573.80, APPROXIMATELY. COORDINATE ROUTING WITH CIVIL PLANS TO AVOID CONFLICTS
- 3 GREASE WASTE RISER UP TO SERVE LEVEL 2 BAR.
- 4 SANITARY SEWER RISER UP TO SERVE LEVEL 2 PLUMBING FIXTURES.
- 5 STORM DRAIN RISER UP TO SERVE ROOF DRAINS.
- 6 OVERFLOW DRAIN RISER UP TO SERVE OVERFLOW DRAINS.
- 7 ALL VENT THRU ROOF (VTR) TO MAINTAIN A MINIMUM OF 10'-0" FROM ALL OUTSIDE AIR INTAKES, TYPICAL.
- 8 EXTEND VENT THROUGH ROOF UP TO LEVEL WITH PARAPET.

PSW Job Number:
1001B

BID DOCUMENTS

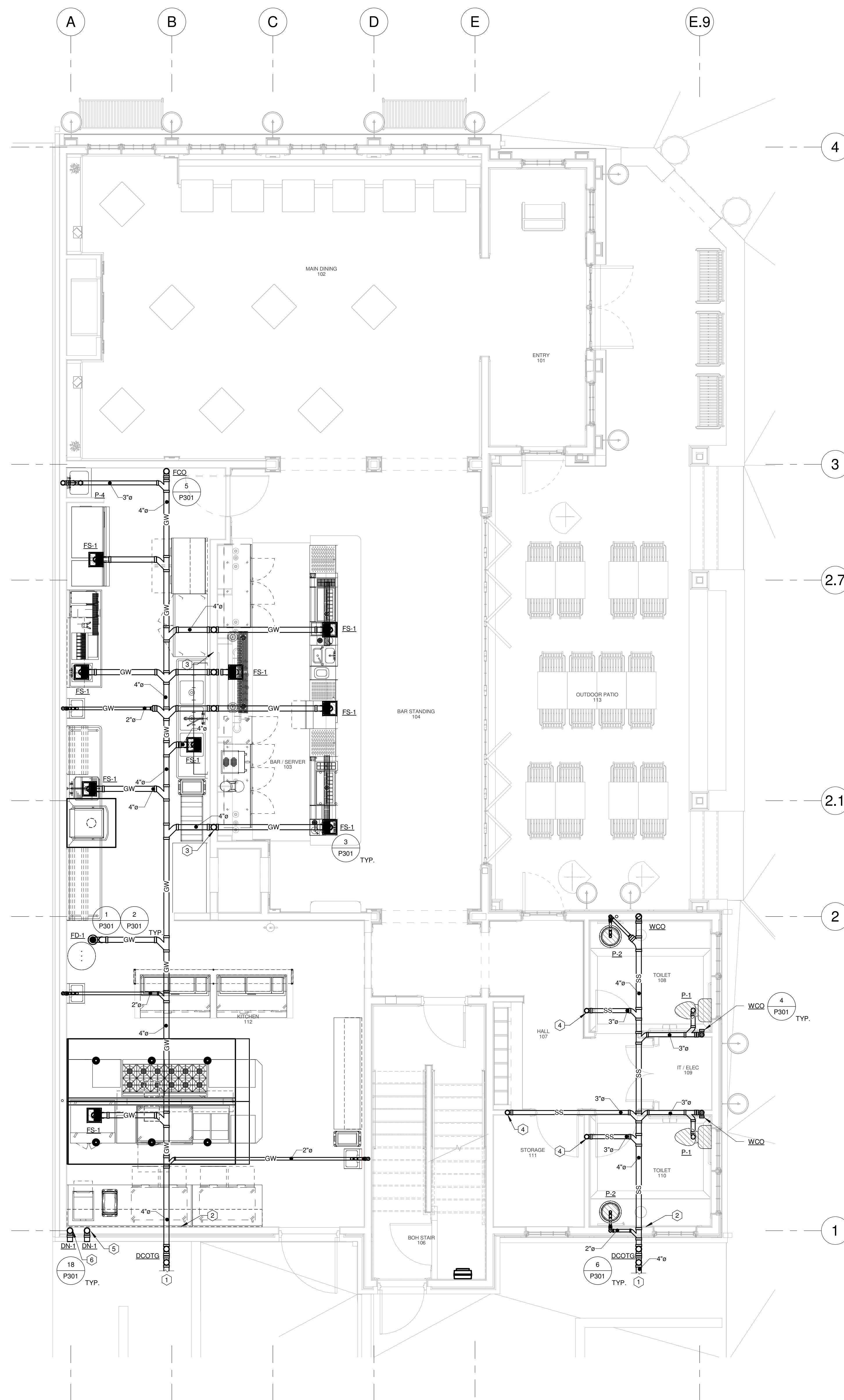
ENGLISH PUB

Little Rock, Arkansas

Issue Date:
01.31.25

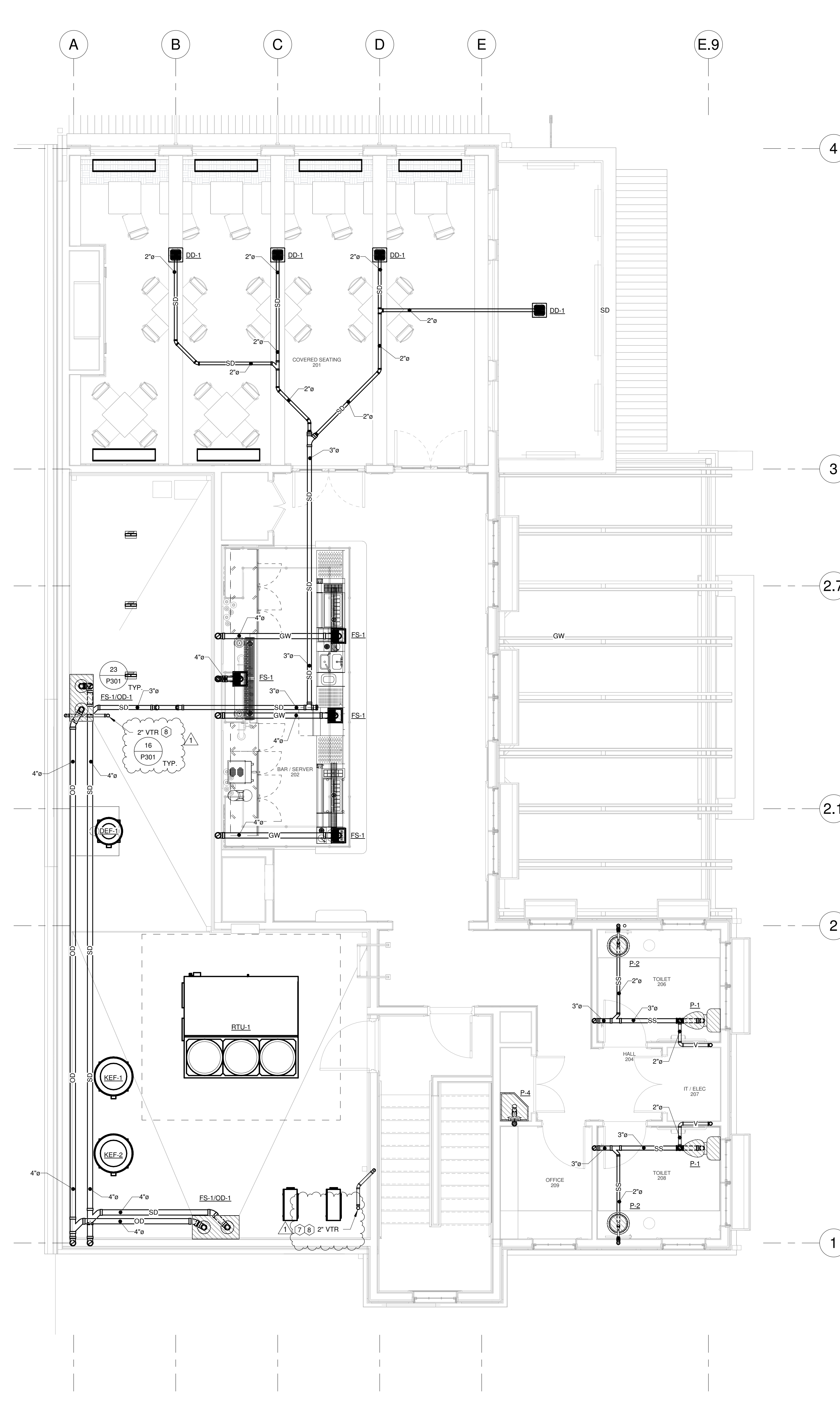
REVISIONS		
NUMBER	DATE	DESCRIPTION
1	02.25.25	Addendum 1

Contents:
SANITARY SEWER
AND STORM
DRAIN FLOOR
PLANS



1 LEVEL 1 - SANITARY SEWER AND STORM DRAIN PLAN

P101 1/4" = 1'-0"



2 LEVEL 2 - SANITARY SEWER AND STORM DRAIN PLAN

P101 1/4" = 1'-0"



KEYED NOTES:

- REFER TO CIVIL PLANS FOR CONTINUATION.
- NATURAL GAS RISER UP EXTERIOR OF BUILDING TO ROOF. SECURE RISER IN A MINIMUM OF THREE LOCATIONS TO EXTERIOR WALL. SEE 2/P201 FOR CONTINUATION.
- NATURAL GAS LINE DROP TO SERVE KITCHEN HEADER. SEE 2/P201 FOR CONTINUATION.
- NATURAL GAS HEADER TO SERVE KITCHEN EQUIPMENT.
- NATURAL GAS SERVICE LINE DROPS DOWN EXTERIOR OF BUILDING. SEE 1/P201 FOR CONTINUATION.
- NATURAL GAS LINE DROPS TO SERVE KITCHEN BELOW. SEE 1/P201 FOR CONTINUATION.
- NATURAL GAS LINE RISES TO SERVE MECHANICAL EQUIPMENT ON UPPER ROOF. SEE 1/P202 FOR CONTINUATION.
- DOMESTIC WATER LINE SERVING BUILDING RISES UP TO ABOVE CEILING. RISER TO BE LOCATED IN WALL ON THE WARM SIDE OF INSULATION TO PREVENT FREEZING.
- 1/2" DOMESTIC WATER LINE DOWN AND UP TO SERVE LAVATORY ON LEVEL 1 AND LEVEL 2.
- 3/4" DOMESTIC WATER LINE DOWN AND UP TO SERVE WATER CLOSET ON LEVEL 1 AND LEVEL 2.
- 1-1/4" DOMESTIC WATER LINE UP TO SERVE JANITOR SINK.
- 1" DOMESTIC HOT AND COLD WATER DROPS TO BELOW SLAB TO BE ROUTED BELOW FLOOR TO RISE UP IN LEVEL 1 BARS TO SERVE EQUIPMENT AND FIXTURES. COORDINATE WITH KITCHEN CONSULTANT PLANS FOR EXACT LOCATION AND CONNECTION TO EQUIPMENT OR FIXTURES.
- 1/2" DOMESTIC WATER LINE FROM BELOW TO SERVE LAVATORY.
- 3/4" DOMESTIC WATER LINE FROM BELOW TO SERVE WATER CLOSET.
- 1-1/4" DOMESTIC WATER LINE FROM BELOW TO SERVE JANITOR SINK AND WATER HEATER.
- WATER HEATER TO BE MOUNTED ON WALL ABOVE JANITOR SINK SHOWN TO THE SIDE FOR DRAWING CLARITY ONLY.
- 3/4" DOMESTIC WATER LINE DOWN TO SERVE LAVATORY ON LEVEL 1 AND LEVEL 2.
- 3/4" DOMESTIC WATER LINE UP TO SERVE FREEZE PROOF ROOF HYDRANT (FPRH).
- 1/2" DOMESTIC WATER LINE UP AND DOWN TO SERVE LEVELS 1 AND 2 BARS. COORDINATE WITH KITCHEN CONSULTANT PLANS FOR EXACT LOCATION AND CONNECTION TO EQUIPMENT OR FIXTURES.
- 1" DOMESTIC HOT AND COLD WATER TO BE ROUTED IN LEVEL 1 CEILING TO RISE UP IN LEVEL 2 BAR. SEE 2/P201 FOR CONTINUATION.
- 1" DOMESTIC HOT AND COLD WATER TO BE ROUTED IN LEVEL 1 CEILING TO RISE UP IN LEVEL 2 BAR TO SERVE EQUIPMENT AND FIXTURES. COORDINATE WITH KITCHEN CONSULTANT PLANS FOR EXACT LOCATION AND CONNECTION TO EQUIPMENT OR FIXTURES.
- COORDINATE WITH KITCHEN CONSULTANT PLANS FOR EXACT LOCATION AND CONNECTION TO EQUIPMENT OR FIXTURES. TYPICAL.
- PROVIDE WATER BOX (P-8) FOR DOMESTIC WATER CONNECTION TO EQUIPMENT WHERE REQUIRED BY KITCHEN CONSULTANT. TYPICAL. COORDINATE WITH KITCHEN CONSULTANT PLANS FOR EXACT LOCATION AND CONNECTION TO EQUIPMENT OR FIXTURES. TYPICAL.
- 3/4" DOMESTIC COLD WATER UP TO SERVE FREEZE PROOF WALL HYDRANT ON LEVEL 2.
- 3/4" DOMESTIC COLD WATER FROM BELOW TO SERVE FREEZE PROOF WALL HYDRANT ON LEVEL 2.
- 1" RISER DOWN TO LEVEL 1 AND 1-1/4" RISER UP TO ROOF.
- NATURAL GAS LINE RISES TO SERVE FIRE PLACES FROM UPPER ROOF. SEE 1/P202 FOR CONTINUATION.

PSW Job Number:
1001B

BID DOCUMENTS

ENGLISH PUB

Little Rock, Arkansas

Issue Date:

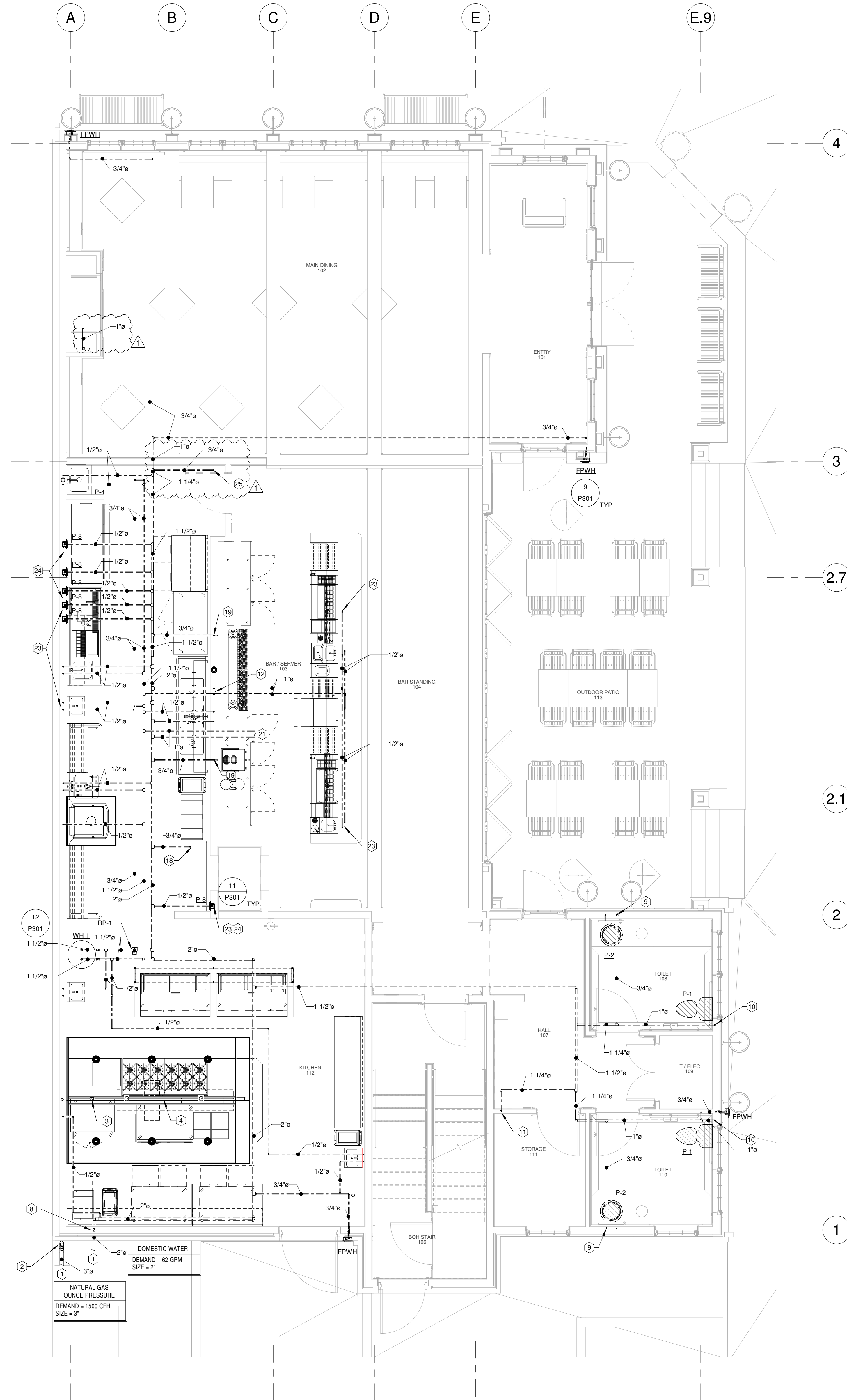
01.31.25

REVISIONS

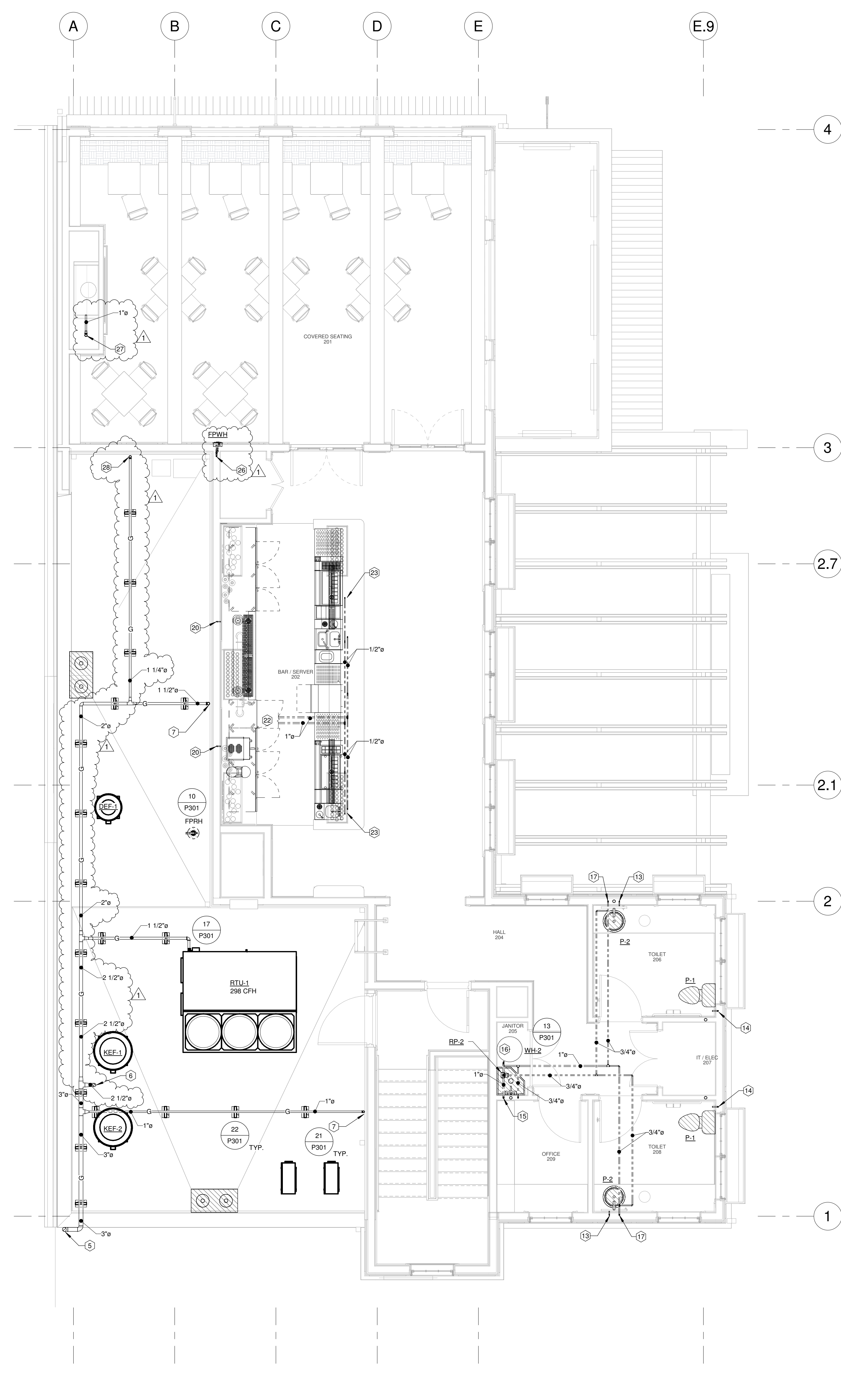
NUMBER	DATE	DESCRIPTION
1	02.25.25	Addendum 1

Contents:

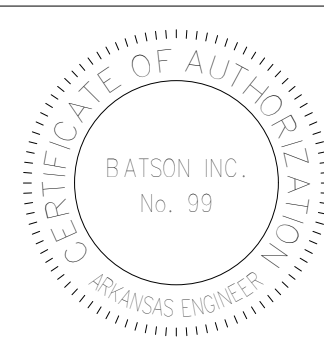
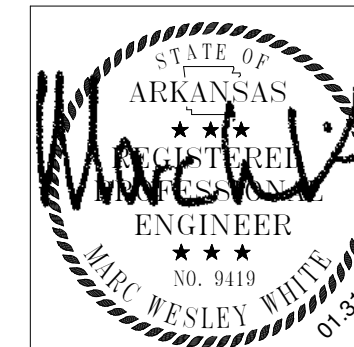
DOMESTIC
WATER AND
NATURAL GAS
FLOOR PLANS

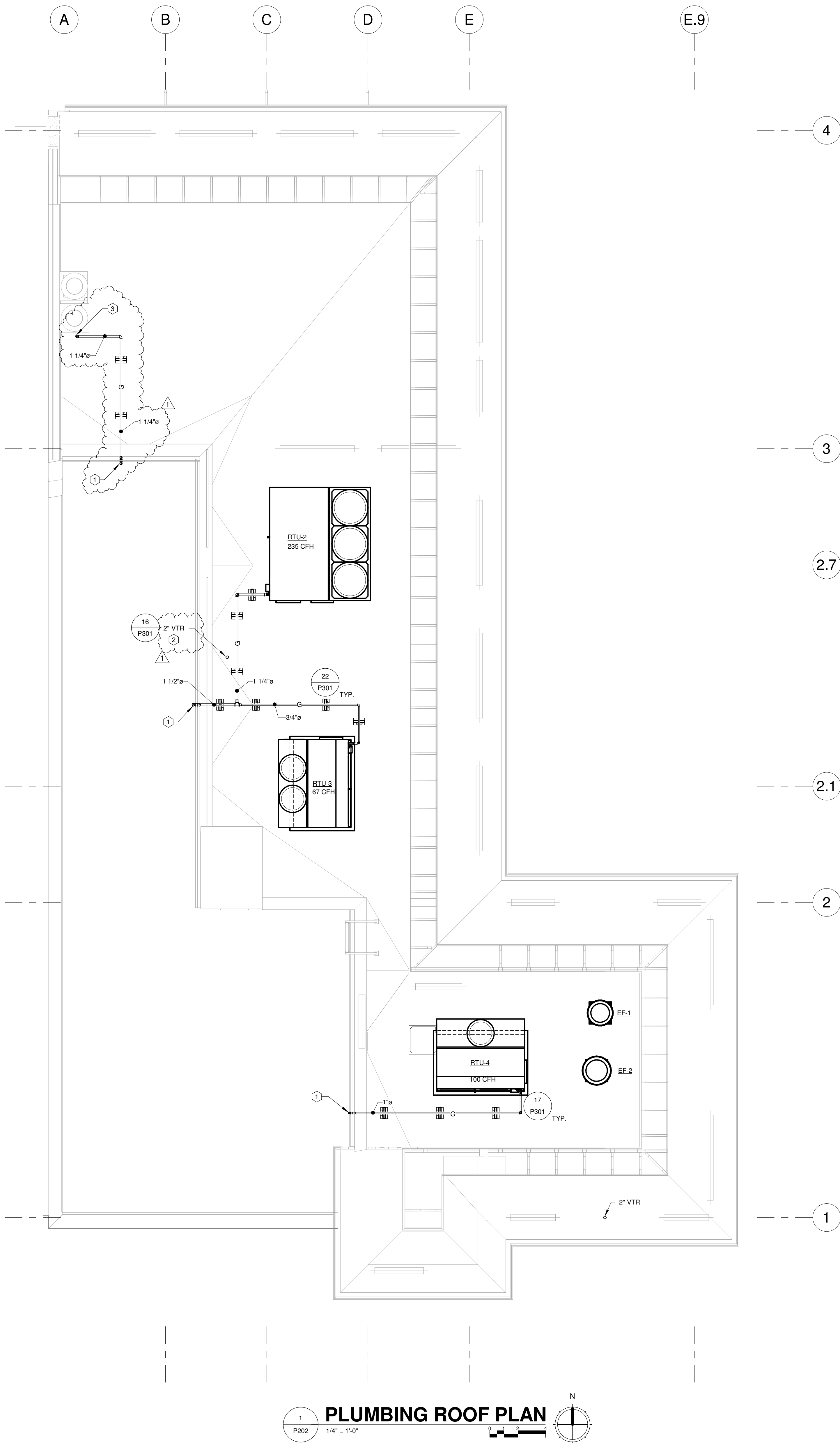


LEVEL 1 - DOMESTIC WATER AND NATURAL GAS PLAN



LEVEL 2 - DOMESTIC WATER AND NATURAL GAS PLAN

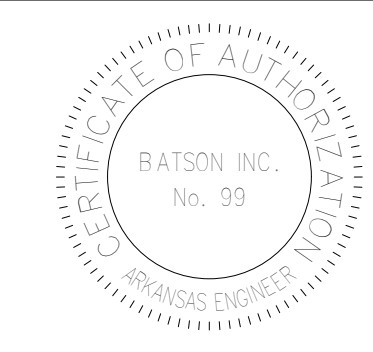




KEYED NOTES:

- 1 NATURAL GAS LINE DROPS TO MAIN ON LOWER ROOF. SEE 2/P201 FOR CONTINUATION.
- 2 EXTEND VENT THROUGH ROOF UP TO LEVEL WITH PARAPET.
- 3 1-1/4" GAS LINE RISER DOWN TO PROVIDE 150 CFH TO GAS LOSS. PROVIDES 75 CFH TO EACH LOG SET ON LEVEL 1 AND LEVEL 2.

1 PLUMBING ROOF PLAN
P202 1/4" = 1'-0"



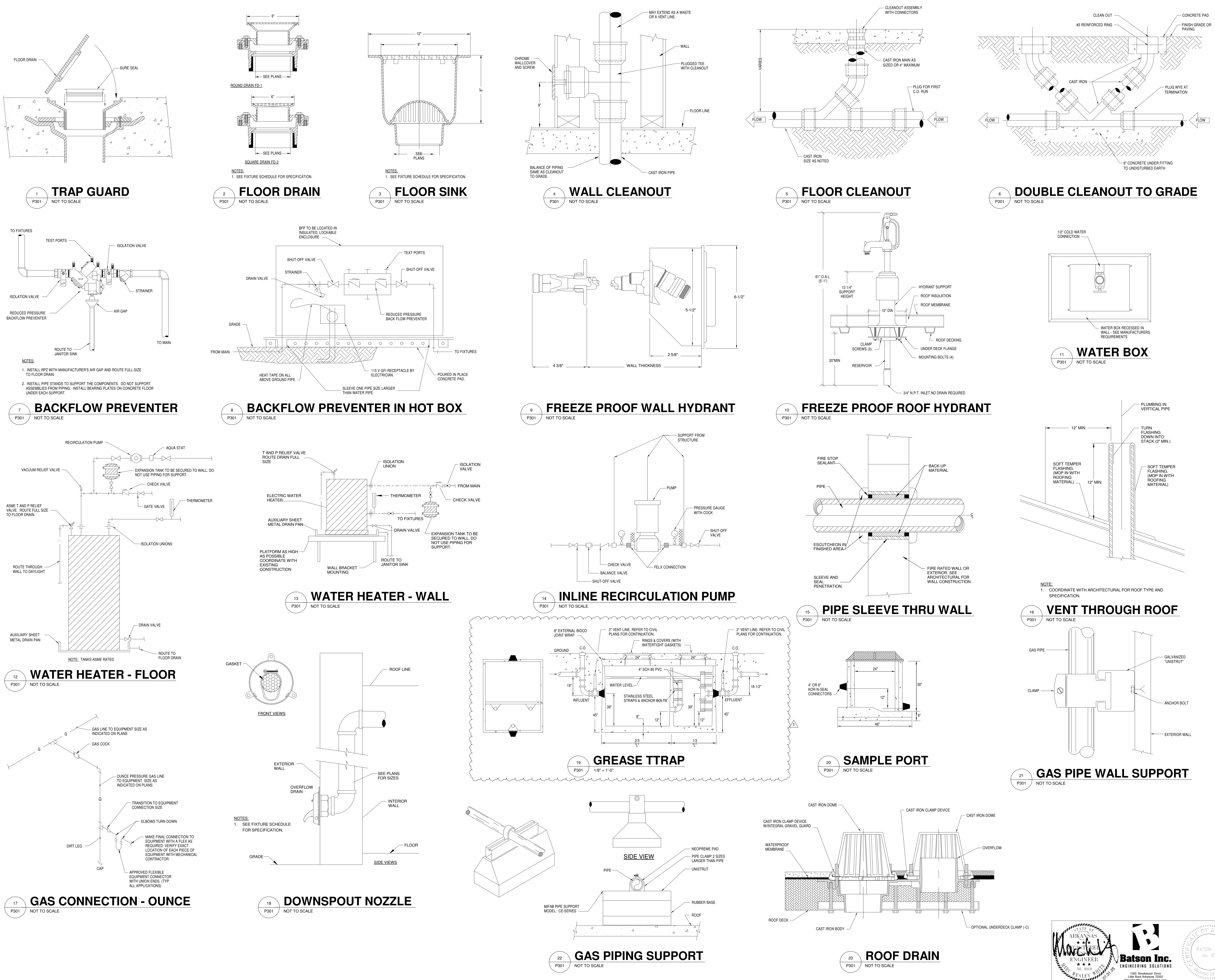
PSW Job Number:
1001B

BID DOCUMENTS

ENGLISH PUB
Little Rock, Arkansas
Issue Date:
01.31.25

REVISIONS		
NUMBER	DATE	DESCRIPTION
1	02.25.25	Addendum 1

Contents:
DOMESTIC
WATER AND
NATURAL GAS
ROOF PLAN



WATER HEATERS / RECIRC PUMPS

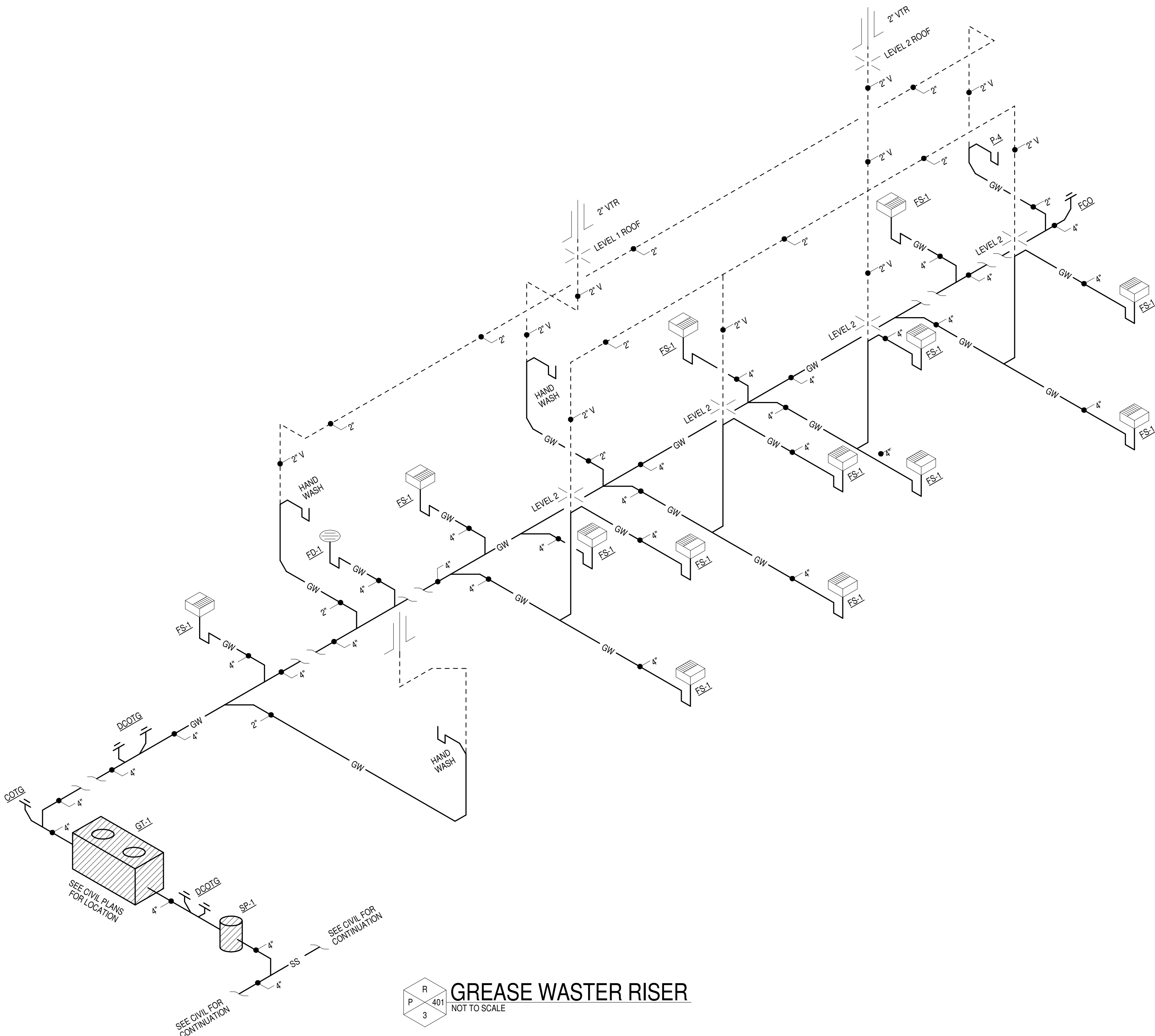
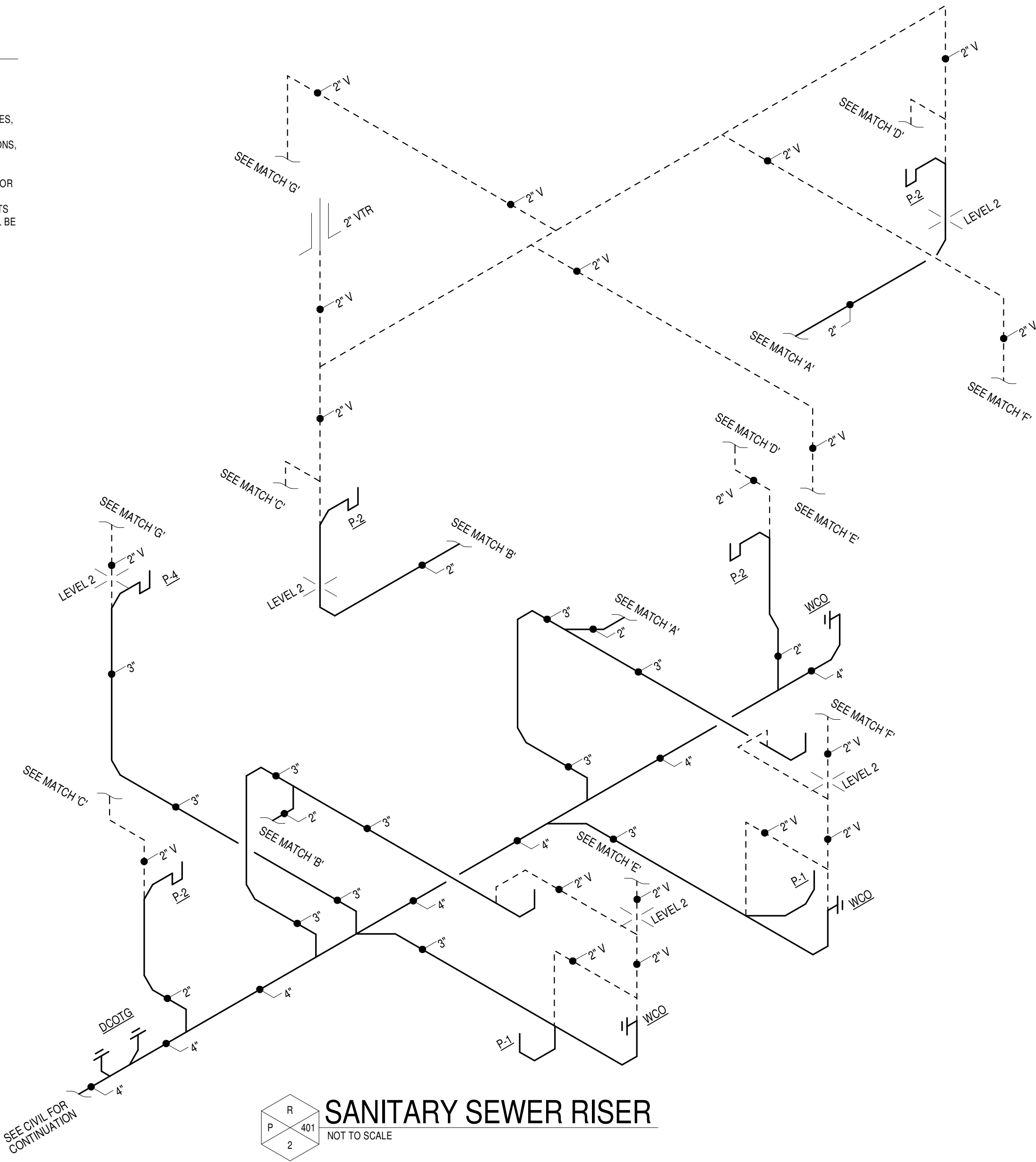
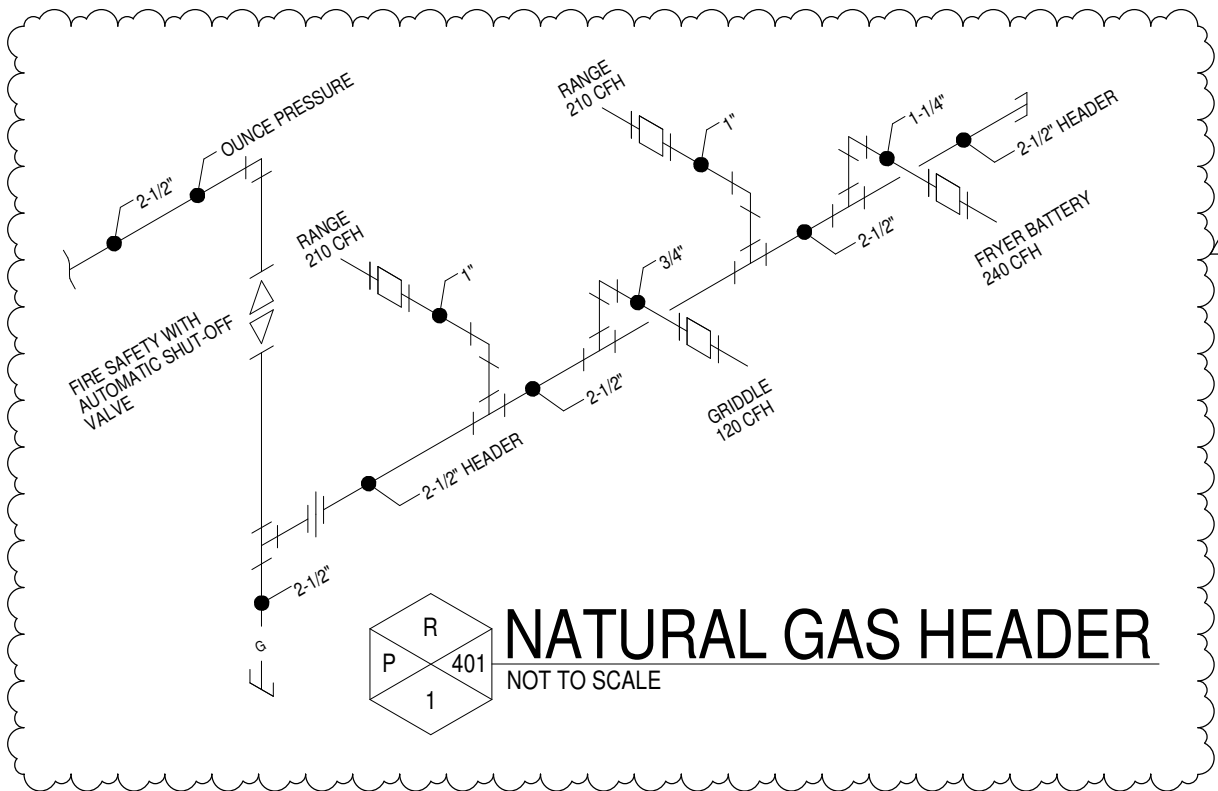
MARK	LOCATION	GALLON CAPACITY	SERVES	ELECTRIC DATA		FUEL	BTUH	MANUFACTURER & MODEL NO. OR EQUAL	CONNECTIONS		REMARKS
				VOLTS/PHASE	KW				CW	HW	
WH-1	KITCHEN 112	120	KITCHEN	208/3	24	---	---	AO SMITH DRE-210	1-1/2"	1-1/2"	PROVIDE WITH T&P VALVE AND WATTS EXPANSION TANK PER MANUFACTURERS SPECIFICATION AND HOLDRITE QUICK STRAP MODEL QS-5 FOR EXPANSION TANK OR EQUAL. HEATER TO PROVIDE 120°F WATER AT FIXTURES.
RP-1	KITCHEN 112 BY WH-1	---	WH-1	120/1	25 WATTS	---	---	GRUNDFOS UP 15-10 BUC7	---	3/4"	4 GPM WHEN OPERATING AT TOTAL DEVELOPED HEAD OF 3.2 FT OF WATER COLUMN. 3/4" SWEAT CONNECTION. 2 POLE, SINGLE PHASE, 1/25 HP. PROVIDE WITH AQUA STAT.
WH-2	JANITOR 205	20	RESTROOMS	208/1	3	---	---	AO SMITH DEL-20	1"	1"	PROVIDE WITH T&P VALVE AND WATTS EXPANSION TANK PER MANUFACTURERS SPECIFICATION AND HOLDRITE QUICK STRAP MODEL QS-5 FOR EXPANSION TANK OR EQUAL. PROVIDE WITH HOLDRITE WATER HEATER WALL MOUNT PLANTFORM OR EQUAL. HEATER TO PROVIDE 120°F WATER AT FIXTURES.
RP-2	HIGH IN JANITOR 205	---	WH-2	120/1	25 WATTS	---	---	GRUNDFOS UP 15-10 BUC7	---	3/4"	4 GPM WHEN OPERATING AT TOTAL DEVELOPED HEAD OF 3.2 FT OF WATER COLUMN. 3/4" SWEAT CONNECTION. 2 POLE, SINGLE PHASE, 1/25 HP. PROVIDE WITH AQUA STAT.

PLUMBING FIXTURE SCHEDULE

MARK	DESCRIPTION	WASTE	C.W.	H.W.	MOUNTING	REMARKS
P-1	WATER CLOSET - ADA	3"	1"	---	FLOOR	ICERA - RICHMOND TWO-PIECE TOILET, BOWL 6123-218, TANK 6125-028, TANK LEVER F-62 COORDINATE METAL FINISH SELECTION WITH ARCHITECT. SEAT S-242, WHITE VITREOUS CHINA, ELONGATED BOWL. PROVIDE WITH MCGUIRE SUPPLY KIT. INSTALL PER ADA REQUIREMENTS.
P-2	LAVATORY	1-1/2"	1/2"	1/2"	WALL	KOHLER K-2210-G CAXTON OVAL, WHITE, UNDERMOUNT SINK, WHITE, BRIZO INVARI 65378-F, LHP-ECO, TWO HANDLE WIDESPREAD DECK MOUNT, THREE-HOLE MOUNT, FAUCET. HANDLES TO BE BRIZO HL5378, COORDINATE METAL FINISH SELECTION WITH ARCHITECT. INSTALL MCGUIRE P-TRAP, SUPPLY KIT, WITH ESCUTOCHONS. PROVIDE WITH THERMOSTATIC TEMPERATURE MIXING VALVE TO PROVIDE 105° WATER TO FIXTURE. INSTALL AND INSULATE PER ADA REQUIREMENTS.
P-3	NOT USED					
P-4	JANITOR SINK	3"	1/2"	1/2"	WALL	STERNWILLIAMS MOD. M7B-2424, T-35 HOSE AND WALL HOOK, T-40 S.S. MOP HANGER WITH 3 WALL GRIPS. T&S FAUCET #B-9965-BSTP WITH BUILT-IN STOPS, VACUUM BREAKER, LEVER HANDLES, WALL BRACE, AND 3/4" GARDEN HOSE OUTLET.
P-5 THRU P-7	NOT USED					
P-8	WATER BOX	---	1/2"	---	FLOOR	WATER TITE #AB1200, 1/2" VALVE CONNECTION, 1/4" TURN BALL INSTALLED, CONTOUR DESIGN FOR EASY VALVE ACCESS, THIS BOX SERVICES ONLY ONE ICE MACHINE.
FD-1	FLOOR DRAIN	3"	---	---	FLOOR	ZURN Z4155 SQUARE FLOOR DRAIN, DURA-COATED CAST IRON BODY WITH BOTTOM OUTLET AND TYPE "B" POLISHED NICKLE BRONZE, LIGHT DUTY STRAINER. PROVIDE WITH SURE SEAL TRAP PROTECTION.
FS-1	FLOOR SINK	3"	---	---	FLOOR	ZURN Z1900-2-32 RECEPTOR 12"x12"x6" DEEP CAST IRON BODY AND SQUARE LIGHT DUTY GRATE WITH 1/2" SLOTTED OPENING, WITH INTERIOR BOTTOM DOME STRAINER. PROVIDE WITH 1/2 GRATE TO ALLOW DRAIN PIPE TO TURN DOWN INTO DRAIN.
RD-1 OD-1	ROOF DRAIN / OVERFLOW DRAIN	SEE PLANS	---	---	ROOF	ZURN RD2130 COMBINATION ROOF DRAIN AND OVERFLOW, CONSTRUCTED OF A DURA-COATED CAST IRON BODY. STANDARD TO THE ROOF DRAIN IS A CAST IRON CLAMP DEVICE WITH AN INTEGRAL GRAVEL GUARD, ROOF SUMP RECEIVER, AND CAST IRON DOME STRAINER.
DD-1	DECK DRAIN	SEE PLANS	---	---	DECK	ZURN Z158-DT, 10-5/8" SQUARE TOP PORM-DECK DRAIN, DURA-COATED IRON BODY WITH ROTATABLE SQUARE PROMENADE FRAME WITH SEEPAGE SLOTS, FRAM CLAMPS AND DECORATIVE LIGHT DUTY HEEL-PROOF GATE WITH 3/16" WIDE SLOTS AND NICKLE BRONZE VENEER FRAME AND GRATE.
DN-1	DOWNSPOUT NOZZLE	SEE PLANS	---	---	WALL	ZURN ZF189 CHAMELEON DOWNSPOUT NOZZLE WITH FLAPPER, ALL ALUMINUM BODY, DOWNSPOUT GASKET FOR CAST IRON OR PVC INLET WITH POWDER COATED FACE OF WALL FLANGE, OUTLET NOZZLE AND PERFORATED HINGED FLAPPER, COORDINATE COLOR WITH ARCHITECT.
FPWH	FREEZE PROOF WALL HYDRANT	---	3/4"	---	WALL	WOODFORD #67, AUTOMATIC DRAINING, FREEZELESS WALL HYDRANT WITH HOSE CONNECTION BACKFLOW PROTECTION. PROVIDE WITH STANDARD CHROME FINISH WITH KEY OPERATED BOX.
FPRH	FREEZE PROOF ROOF HYDRANT	---	3/4"	---	ROOF	WOODFORD #SRH-MS, HOSE CONNECTION BACKFLOW PREVENTER.
BFP-1	BACKFLOW PREVENTER	---	2"	---	IN-LINE SERVING BUILDING	WATTS LF989 QT, BACKFLOW PREVENTER, PROVIDE WITH AIR GAP. PROVIDE WITH STRAINER. PROVIDE WITH HOT BOX FOR EXTERIOR INSTALLATION. COORDINATE WITH ELECTRICAL. REFER TO CIVIL PLANS FOR LOCATION OF HOT BOX.
WCO	WALL CLEANOUT	4"	---	---	WALL	ZURN WALL CLEANOUT OR EQUAL.
FOO	FLOOR CLEANOUT	4"	---	---	FLOOR	ZURN CLEANOUT TO GRADE OR EQUAL.
DCOTG	DOUBLE CLEANOUT TO GRADE	4"	---	---	GRADE	ZURN DOUBLE CLEANOUT TO GRADE OR EQUAL.
GT-1	GREASE TRAP	4"	---	---	BELOW GRADE	PETERSON 3000 GALLON OR EQUAL. REFER TO CIVIL PLANS FOR LOCATION OF GREASE TRAP.
SP-1	SAMPLE PORT	4"	---	---	BELOW GRADE	PETERSON OR EQUAL. REFER TO CIVIL PLANS FOR LOCATION OF SAMPLE PORT.

EQUIPMENT NOTES:

1. REFER TO THE SPECIFICATIONS FOR ADDITIONAL EQUIPMENT REQUIREMENTS.
2. MANUFACTURERS INDICATED ARE TO ESTABLISH MINIMUM CAPACITIES, EFFICIENCIES, QUALITY, ACCESSORIES AND STANDARDS. UNLESS OTHERWISE INDICATED ON THE SCHEDULES OR IN THE SPECIFICATIONS, EQUAL EQUIPMENT BY OTHER MANUFACTURERS MAY BE USED.
3. ANY CHANGES TO THE ELECTRICAL, STRUCTURAL, ARCHITECTURAL OR OTHER MECHANICAL SYSTEMS WHICH RESULT FROM SUBSTITUTED EQUIPMENT SHALL BE COORDINATED FULLY PRIOR TO BID. ALL COSTS RESULTING FROM CHANGES REQUIRED BY THE SUBSTITUTION SHALL BE INCLUDED IN THE BIDS.



801 South Spring Street
Little Rock, AR 72201
501.378.0878 office
509 W. Spring St. | Suite 150
Fayetteville, AR 72701
479.444.0473 office
polkstanleywilcox.com

MEP ENGINEERING
Batson Inc
1300 Brookwood Dr
Little Rock, AR 72202
PH: 501.664.3311

STRUCTURAL ENGINEERING
Engineering Consultants, Inc
401 W Capitol Ave, Suite 305
Little Rock, AR 72201
PH: 501.376.3752

CIVIL ENGINEERING
McClelland Consulting Engineers
7302 Kanis Rd
Little Rock, AR 72204
PH: 501.371.0272

INTERIOR DESIGN
Rebecca Callis
840 Cherokee Rd
Charlotte, NC 28207
PH: 704.301.4961

PSW Job Number:
1001B

BID DOCUMENTS

ENGLISH PUB
Little Rock, Arkansas
Issue Date:
01.31.25

REVISIONS		
NUMBER	DATE	DESCRIPTION
1	02.25.25	Addendum 1

Contents:
PLUMBING
SCHEDULE AND
RISER

