

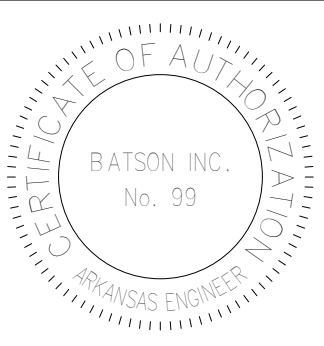
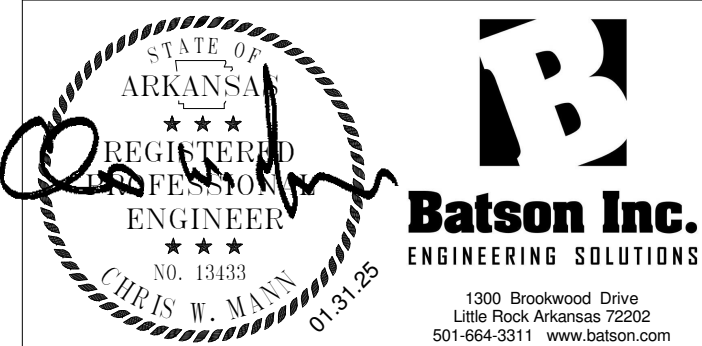
**GENERAL ELECTRICAL NOTES**

- ALL EXIT LIGHTS AND BATTERY BACKUP FOR EMERGENCY FIXTURES SHALL BE CIRCUITED WITH AN UNSWITCHED HOT.
- ALL LIGHTING AND DIMMER SWITCHES SHALL BE DECORA-STYLE. COLOR TO BE SELECTED BY ARCHITECT.
- ALL DIMMER SWITCHES FOR LED FIXTURES WITHIN THE CONTRACTOR'S SCOPE OF WORK SHALL BE THE 0-10V TYPE.
- CONTRACTOR SHALL VERIFY TYPE OF DIMMER SWITCHES REQUIRED FOR OWNER-FURNISHED, CONTRACTOR INSTALLED FIXTURES.
- PROVIDE 24" OF EXTRA WIRING SLACK AT EACH WALL SCONCE.
- VERIFY MOUNTING HEIGHTS AND ROUGH-IN LOCATIONS OF ALL FIXTURES WITH ARCHITECT PRIOR TO BEGINNING WORK. VERIFY FINAL AIMING WITH ARCHITECT ONCE FIXTURES HAVE BEEN INSTALLED.
- COORDINATE FINAL LOCATIONS OF ALL RECESSED CEILING FIXTURES WITH ARCHITECT'S PLANS AND STRUCTURAL CEILING JOISTS.

**KEYED ELECTRICAL NOTES**

- CONTINUE CIRCUITING TO WALL SCONCES AT STAIR LANDING. REFER TO 2ND FLOOR LIGHTING PLAN.
- TYPE "Z" FIXTURE BACK BOXES REQUIRE 1.5" EXTENSION RING TO BE INSTALLED TO ACCOMMODATE THE BATTERY BACKUP. INSURE EXTENSION RING IS INSTALLED SO FIXTURE CANOPY SITS FLUSH AGAINST THE EXTERIOR WALL SURFACE. TYPICAL ALL TYPE "Z" LIGHTING FIXTURES.
- REMOTE MOUNT DRIVER UNDER BAR FOR TYPE "V" LIGHTING FIXTURE. VERIFY PLACEMENT WITH ARCHITECT.
- PROVIDE AND INSTALL FAN SPEED CONTROL SWITCH. USE SPEED SWITCH COMPATIBLE WITH MANUFACTURER'S RECOMMENDATIONS.
- CONTINUE CIRCUITING TO CAN LIGHTS AT 2ND FLOOR. REFER TO 2ND FLOOR LIGHTING PLAN.

1  
 E201  
 1/4" = 1'-0"  
**LEVEL 1 - LIGHTING PLAN**



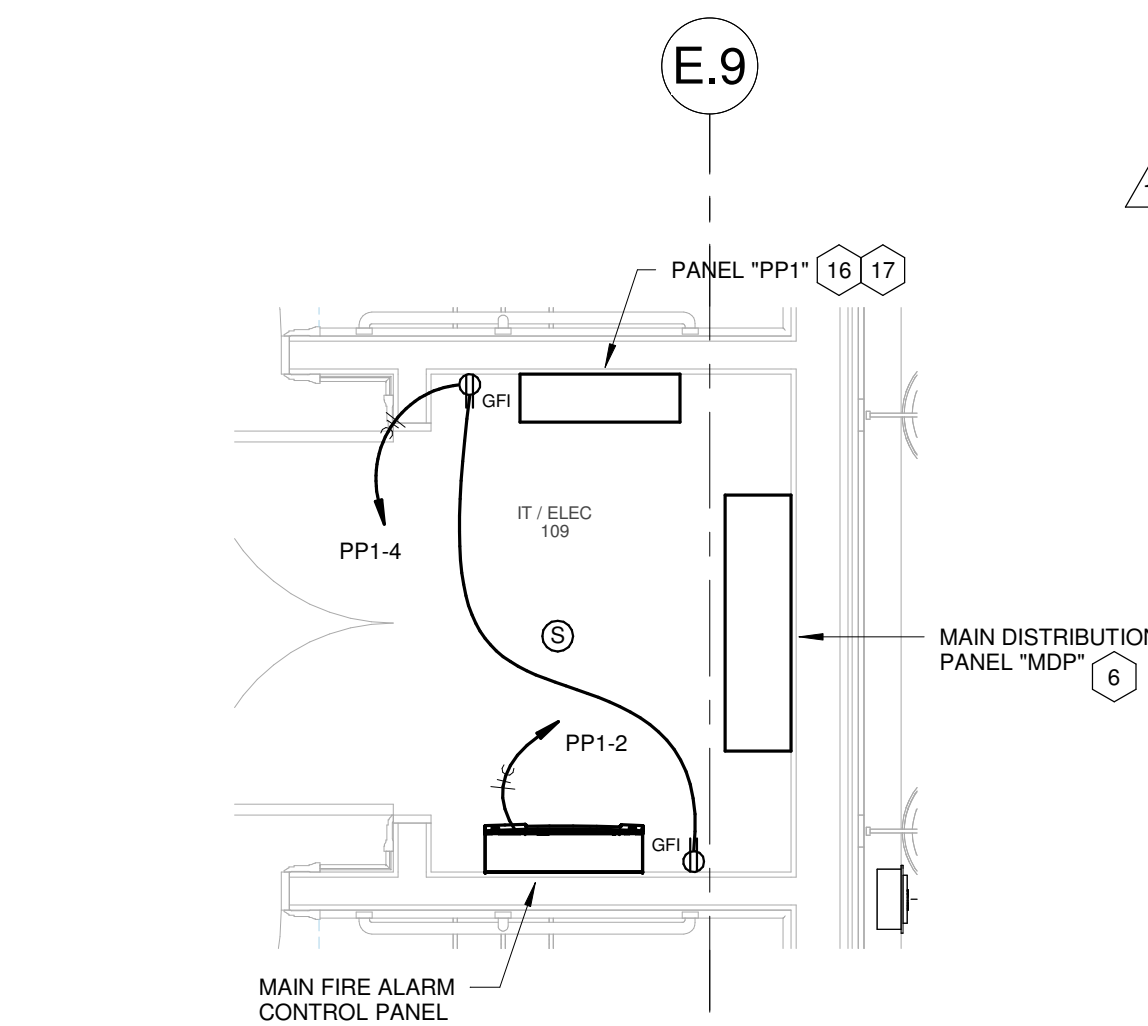


## GENERAL ELECTRICAL NOTES

- HOMERUN ALL TELEPHONE/DATA CONDUITS BACK TO STORAGE 111 WHERE STUB-UPS OCCUR OVER HARD CEILING AREAS.
- CONTACT BRAD VANCE WITH ENERGY AND INCLUDE ALL UTILITY COSTS IN BID.
- ALL WIRING DEVICES INSTALLED IN BASEBOARDS SHALL BE INSTALLED IN SINGLE-GANG BACKBOXES AND MOUNTED HORIZONTALLY. VERIFY EXACT MOUNTING HEIGHTS WITH ARCHITECT PRIOR TO BEGINNING ROUGH-INS.
- COORDINATE ALL WIRING DEVICE EXACT LOCATIONS AND ROUGH-IN HEIGHTS WITH ARCHITECT PRIOR TO BEGINNING WORK.
- REFER TO CAPTIVE/ARE HOO DRAWINGS FOR ALL CONDUIT AND WIRING REQUIREMENTS BETWEEN HOOD CONTROL PANEL AND RTUS, EXHAUST FANS, HMIs, AND HUMIDISTAT. MAKE ALL CONNECTIONS AS REQUIRED.

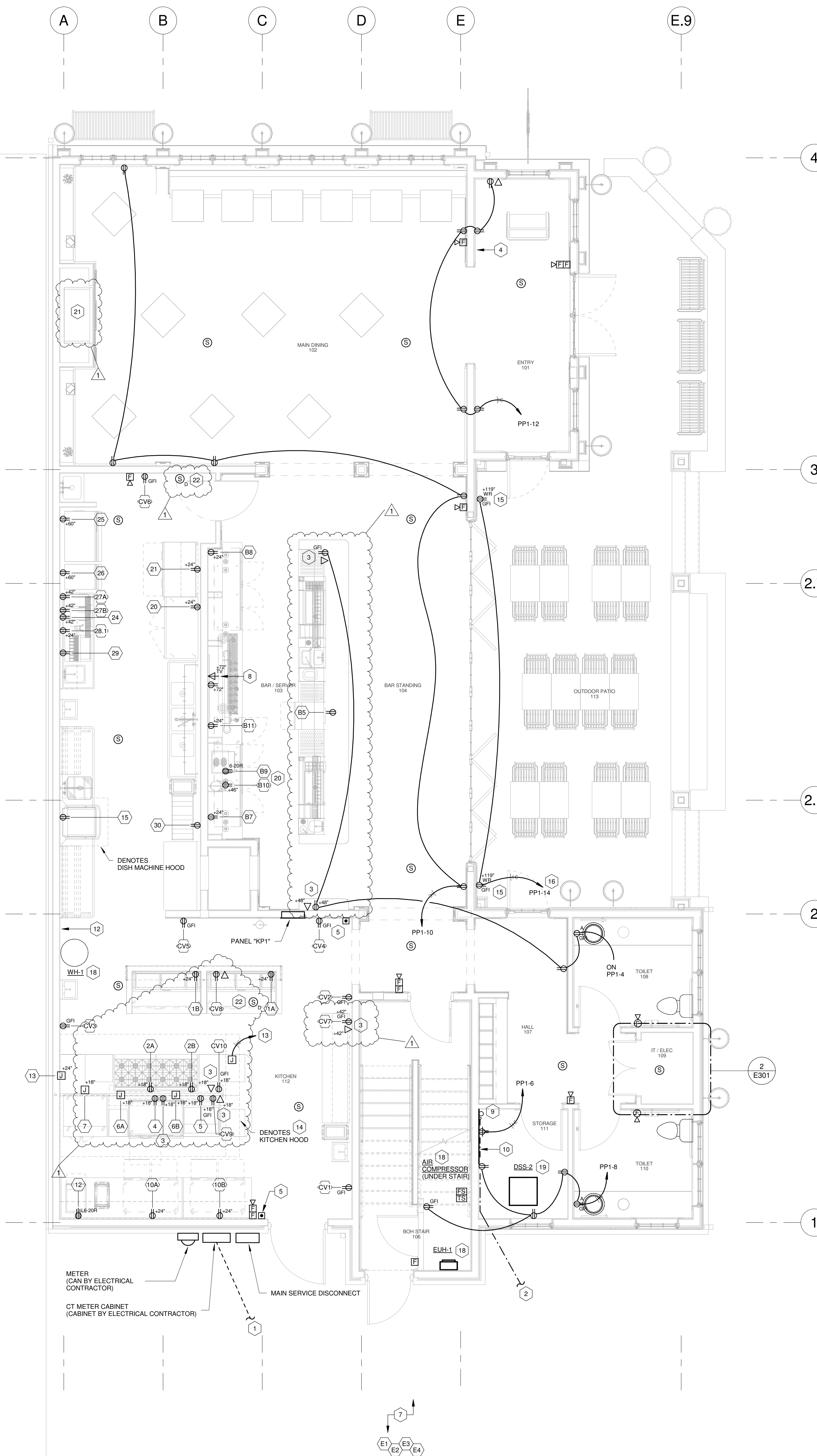
## KEYED ELECTRICAL NOTES

- UNDERGROUND SECONDARY. REFER TO ONE-LINE DIAGRAM FOR CONDUIT AND FEEDER REQUIREMENTS. REFER TO CIVIL SITE PLAN FOR CONDUIT ROUTING BACK TO EXISTING POWER POLE AT THE SOUTHEAST CORNER OF THE PROPERTY.
- PROVIDE AND INSTALL (1) 4" AND (1) 2" FROM TELEPHONE PEDESTAL FOR COMMUNICATIONS. STUB UP CONDUITS IN CORNER OF STORAGE 111. COORDINATE WITH OWNER'S SERVICE PROVIDER FOR REQUIREMENTS AND REFER TO CIVIL SITE PLAN FOR CONDUIT ROUTING.
- POWER AND DATA FOR POINT-OF-SALE (POS), KDS MACHINES, VERIFY MOUNTING HEIGHTS FOR WIRING DEVICES PRIOR TO BEGINNING ROUGH-IN. CONNECT TO CIRCUIT AS INDICATED.
- FIRE ALARM REMOTE ANNUNCIATOR. CONNECT TO CONTROL PANEL AS REQUIRED.
- PROVIDE AND INSTALL .75" STUBBED FROM HEXAGONAL JUNCTION AT 48" ABOVE FINISH FLOOR FOR ANSUL PULL STATION. STUB CONDUIT TO ABOVE ACCESSIBLE CEILING. VERIFY EXACT LOCATION WITH FIRE SYSTEM INSTALLER.
- CONNECT SHUNT TRIP BREAKER FOR ITEM #13 CHEF SUITE LOAD CENTER BACK TO HOOD CONTROL PANEL AS REQUIRED TO SHUT DOWN LOADS UPON ACTIVATION OF ANSUL SYSTEM.
- VERIFY WALK-IN COOLER/FREEZER CONNECTIONS AND STUB UP LOCATIONS WITH KITCHEN EQUIPMENT SUPPLIER. SEAL ALL CONDUIT PENETRATIONS IN ACCORDANCE WITH KITCHEN EQUIPMENT SUPPLIER REQUIREMENTS. REFER TO ARCHITECTURAL SITE PLAN FOR COOLER/FREEZER LOCATION.
- STUB UP 1" .25" FROM TELEVISION COMMUNICATIONS BACKBOX TO ABOVE ACCESSIBLE CEILING OR HOMERUN BACK TO STORAGE 111. TYPICAL ALL TELEVISION LOCATIONS.
- COMMUNICATION SERVICE CONDUIT STUB-UPS.
- TELEPHONE TERMINAL BOARD. PROVIDE AND INSTALL 4'x8'x.75" SHEET PLYWOOD PAINTED WITH FIRE RETARDANT PAINT.
- HOT BOX. PROVIDE AND INSTALL GFI/WP OUTLET. CONNECT OUTLET TO "PP1-18". REFER TO CIVIL SITE PLAN FOR HOT BOX LOCATION.
- DISCONNECT LOCATION FOR WATER HEATER.
- HOOD CONTROL PANEL. CONNECT TO "KP1-22".
- ELECTRICAL CONTRACTOR IS RESPONSIBLE FOR PROVIDING ALL CONDUIT AND WIRING BETWEEN HOOD CONTROL PANELS AND RTUs, EXH FANS, HMIs, AND HUMIDISTATS. MAKE CONNECTIONS TO CONTROL PANELS, EQUIPMENT AND DEVICES. COORDINATE AND VERIFY MOUNTING HEIGHTS AND LOCATIONS WITH MECHANICAL PLANS/EQUIPMENT INSTALLERS.
  - (QTY OF 4) - 5/8" #18 FROM EACH RTU TO ASSOCIATED HUMIDISTAT
  - (QTY OF 1) - 2" #18 FROM CONTROL PANEL TO KITCHEN TEMP SENSOR
  - (QTY OF 4) - 4" #18 FROM CONTROL PANEL TO EACH RTU
  - (QTY OF 1) - 3/4" #12 FROM HOOD #1 TO HOOD #2 FOR LIGHTS
  - (QTY OF 1) - 3/4" #14 FROM CONTROL PANEL TO GAS VALVE
  - (QTY OF 4) - 2-GANG BACK BOX FOR EACH HMI
  - (QTY OF 1) - SINGLE-GANG BACK BOX FOR KITCHEN TEMP SENSOR
  - (QTY OF 1) - 2" #18 FROM HOOD #1 TO HOOD #2 FOR DUCT STAT
  - (QTY OF 2) - OUTDOOR RATED TWISTED SHIELDED PAIR FROM CONTROL PANEL TO EXHAUST FAN
  - (QTY OF 4) - PLENUM RATED CATS FROM EACH RTU TO ASSOCIATED HMICATS CABLED BY EQUIPMENT SUPPLIER.
- MOUNT OUTLET IN WOODEN BEAM ABOVE LIGHTING FIXTURE. CENTER OUTLET IN BEAM.
- INSTALL SINGLE POLE SWITCH IN IT/ELEC ROOM TO SWITCH OUTLETS IN OUTDOOR PATIO AREA. LABEL SWITCH "OUTDOOR PATIO LIGHTS". MOUNT SWITCH ADJACENT TO PANELBOARD "PP1-1".
- INSTALL (2) SINGLE-POLE SWITCHES IN IT/ELEC ROOM 109 TO SWITCH OUTLETS IN 2ND FLOOR SCOFFIT. LABEL SWITCHES "OFFICE CHRISTMAS LIGHTS". MOUNT SWITCH ADJACENT TO PANELBOARD "PP1-1". ONE SWITCH SHALL CONTROL OUTLETS ON CIRCUIT "PP1-34" AND 2ND SWITCH TO CONTROL OUTLETS ON "PP1-36".
- REFER TO LEVEL 1 MECHANICAL CIRCUIT SCHEDULE THIS SHEET FOR REQUIREMENTS. DISCONNECTS SHALL BE MOUNTED SO THEY DO NOT INTERFERE WITH EQUIPMENT ACCESS OR CLEARANCE SPACE.
- REFER TO LEVEL 2 MECHANICAL CIRCUIT SCHEDULE ON SHEET E401 FOR REQUIREMENTS.
- MOUNT OUTLETS IN SHELVING BASE SUPPORT. REFER TO ARCHITECTURAL DETAILS AND ELEVATIONS.
- CONNECT FIREPLACE TO CIRCUIT "PP1-10".
- DUCT SMOKE DETECTOR PROVIDED BY ELECTRICAL CONTRACTOR AND INSTALLED BY MECHANICAL CONTRACTOR. CONNECT TO FIRE ALARM SYSTEM.



2 LEVEL 1 - IT/ELEC 109

E301 1/2" = 1'-0"



1 LEVEL 1 - POWER & SYSTEMS PLAN

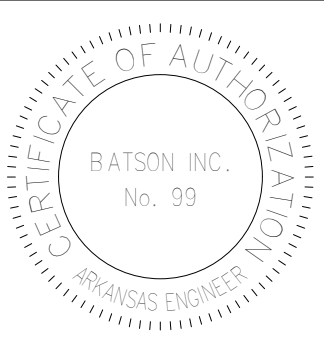
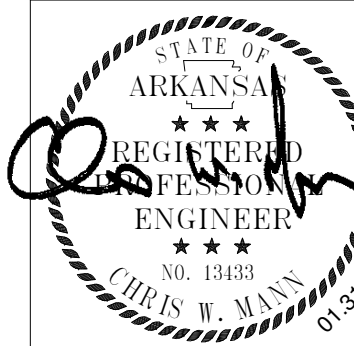
E301 1/4" = 1'-0"

KITCHEN EQUIPMENT ELECTRICAL SCHEDULE							
ITEM	ITEM DESCRIPTION	VOLTAGE	DEVICE	CIRCUIT	CONDUIT & CONDUCTORS	MOUNTING	REMARKS
1A	PIZZA PREP REFRIGERATOR	120V	5-20R	KP1-1	2#12, 1#12EG, .75" C	24" AFF	
1B	PIZZA PREP REFRIGERATOR	120V	5-20R	KP1-3	2#12, 1#12EG, .75" C	24" AFF	
2A	36" RANGE, 6 OPEN BURNERS	120V	5-20R	EQUIPMENT LOAD CENTER	2#12, 1#12EG, .75" C	18" AFF	FED FROM ITEM #13 CHEF SUITE LOAD CENTER. ALL DEVICES, WIRING AND CONNECTIONS TO LOAD CENTER ARE PROVIDED AND INSTALLED BY ELECTRICAL CONTRACTOR. EQUIPMENT LOAD CENTER AND OVERCURRENT PROTECTION ARE PROVIDED WITH EQUIPMENT. REFER TO KITCHEN EQUIPMENT SHOP DRAWINGS FOR CIRCUIT INFORMATION FOR EACH PIECE OF EQUIPMENT.
2B	36" RANGE, 6 OPEN BURNERS	120V	5-20R	EQUIPMENT LOAD CENTER	2#12, 1#12EG, .75" C	18" AFF	
3	COUNTERTOP GAS GRIDDLE	120V	5-20R	EQUIPMENT LOAD CENTER	2#12, 1#12EG, .75" C	18" AFF	
4	WORKTOP COOK STAND REFRIGERATOR	120V	5-20R	EQUIPMENT LOAD CENTER	2#12, 1#12EG, .75" C	18" AFF	
5	GAS FRYER, BATTERY	120V	5-20R	EQUIPMENT LOAD CENTER	2#12, 1#12EG, .75" C	18" AFF	
6A	HEAT LAMP	120V	DIRECT	EQUIPMENT LOAD CENTER	2#12, 1#12EG, .75" C	18" AFF	
6B	HEAT LAMP	120V	DIRECT	EQUIPMENT LOAD CENTER	2#12, 1#12EG, .75" C	18" AFF	
7	ELECTRIC CONVECTION OVEN	208V / 3PH	DIRECT	EQUIPMENT LOAD CENTER	3#3, 1#8EG, 1.25" C	18" AFF	
10A	UNDERCOUNTER REFRIGERATOR	120V	5-20R	KP1-5	2#12, 1#12EG, .75" C	24" AFF	
10B	UNDERCOUNTER REFRIGERATOR	120V	5-20R	KP1-7	2#12, 1#12EG, .75" C	24" AFF	
12	RAPID COOK OVEN	208V / 1PH	L6-20R	KP1-9,11	2#12, 1#12EG, .75" C	42" AFF	
13	CHEF SUITE	208V / 1PH	DIRECT	MDP-13	REFER TO ONE-LINE DIAGRAM	VERIFY	CONNECTION TO J-BOX / LOAD CENTER
15	DISH MACHINE	120V	5-20R	KP1-27	2#12, 1#12EG, .75" C	VERIFY	
20	REACH-IN REFRIGERATOR	120V	5-20R	KP1-13	2#12, 1#12EG, .75" C	24" AFF	
21	REFRIGERATED WORK TOP	120V	5-20R	KP1-15	2#12, 1#12EG, .75" C	24" AFF	
24	BEVERAGE COUNTER	120V	5-20R	KP1-17	2#12, 1#12EG, .75" C	42" AFF	BRANCH TO 5-20R OUTLET IN BACKSPLASH; VERIFY LOCATION W/ KITCHEN INSTALLER
25	ICE MAKER, CUBE-STYLE	120V	5-20R	KP1-19	2#12, 1#12EG, .75" C	60" AFF	
26	ICE MAKER, NUGGET	120V	5-20R	KP1-21	2#12, 1#12EG, .75" C	60" AFF	
27A	COFFEE / TEA BREWER	120V	5-20R	KP1-23	2#12, 1#12EG, .75" C	42" AFF	
27B	COFFEE / TEA BREWER	120V	5-20R	KP1-25	2#12, 1#12EG, .75" C	42" AFF	
28.1	UNDERCOUNTER CARBONATION CHILLER SYSTEM	120V	5-20R	KP1-6	2#12, 1#12EG, .75" C	24" AFF	
29	SODA ICE & BEVERAGE DISPENSER	120V	5-20R	KP1-2	2#12, 1#12EG, .75" C	VERIFY	VERIFY ROUGH-IN HEIGHT AND LOCATION WITH OWNER/ARCHITECT
30	CARBONATOR	120V	5-20R	KP1-4	2#12, 1#12EG, .75" C	VERIFY	VERIFY ROUGH-IN HEIGHT AND LOCATION WITH OWNER/ARCHITECT
B5	GLASSWASHER, UNDERCOUNTER	120V	DIRECT	KP1-8	2#12, 1#12EG, .75" C	18" AFF	
B7	REFRIG. BACK BAR CABINET	120V	5-20R	KP1-10	2#12, 1#12EG, .75" C	24" AFF	
B8	REFRIG. BACK BAR CABINET	120V	5-20R	KP1-12	2#12, 1#12EG, .75" C	24" AFF	
B9	ESPRESSO / CAPPUCCINO MACHINE	208V / 1PH	6-20R	KP1-14,16	2#12, 1#12EG, .75" C	46" AFF	
B10	COFFEE GRINDER	120V		KP1-18	2#12, 1#12EG, .75" C	46" AFF	
B11	FREEZER MUG FROSTER	120V	5-20R	KP1-20	2#12, 1#12EG, .75" C	24" AFF	
C5	GLASSWASHER, UNDERCOUNTER	120V	DIRECT	2PP1-2	2#12, 1#12EG, .75" C	18" AFF	
C7	REFRIG. BACK BAR CABINET	120V	5-20R	2PP1-4	2#12, 1#12EG, .75" C	24" AFF	
C8	REFRIG. BACK BAR CABINET	120V	5-20R	2PP1-6	2#12, 1#12EG, .75" C	24" AFF	
C9	ESPRESSO / CAPPUCCINO MACHINE	208V / 1PH	6-20R	2PP1-8,10	2#12, 1#12EG, .75" C	48" AFF	
C10	COFFEE GRINDER	120V		2PP1-12	2#12, 1#12EG, .75" C	48" AFF	
C11	FREEZER MUG FROSTER	120V	5-20R	2PP1-14	2#12, 1#12EG, .75" C	24" AFF	
E1	WALK-IN COOLER LIGHTS & DOOR HEATER	120V	DIRECT	PP1-26	2#12, 1#12EG, .75" C	VERIFY CONNECTION LOCATION	FIXTURES BY KITCHEN SUPPLIER; INSTALLED BY ELEC CONTRACTOR; LAMPS BY ELEC CONTRACTOR
E2	WALK-IN COOLER UNIT COOLER	208V / 1PH	DIRECT	PP1-18,20	2#12, 1#12EG, .75" C	VERIFY CONNECTION/DISCONNECT LOCATION	PROVIDE AND INSTALL NEMA 3R DISC, 240V/30A/2P
E3	WALK-IN FREEZER LIGHTS & DOOR HEATER	120V	DIRECT	PP1-26	2#12, 1#12EG, .75" C	VERIFY CONNECTION LOCATION	FIXTURES BY KITCHEN SUPPLIER; INSTALLED BY ELEC CONTRACTOR; LAMPS BY ELEC CONTRACTOR
E4	WALK-IN FREEZER UNIT COOLER	208V / 1PH	DIRECT	PP1-22,24	2#10, 1#10EG, .75" C	VERIFY CONNECTION/DISCONNECT LOCATION	PROVIDE AND INSTALL NEMA 3R DISC, 240V/30A/2P
CV1	CONVENIENCE OUTLET	120V	5-20R / GFI	KP1-29	2#12, 1#12EG, .75" C	18" AFF	
CV2	CONVENIENCE OUTLET	120V	5-20R / GFI	KP1-29	2#12, 1#12EG, .75" C	18" AFF	
CV3	CONVENIENCE OUTLET	120V	5-20R / GFI	KP1-29	2#12, 1#12EG, .75" C	18" AFF	
CV4	CONVENIENCE OUTLET	120V	5-20R / GFI	KP1-31	2#12, 1#12EG, .75" C	18" AFF	
CV5	CONVENIENCE OUTLET	120V	5-20R / GFI	KP1-31	2#12, 1#12EG, .75" C	18" AFF	
CV6	CONVENIENCE OUTLET	120V	5-20R / GFI	KP1-31	2#12, 1#12EG, .75" C	18" AFF	
CV7	POS / KDS MACHINE	120V	5-20R / GFI	KP1-29	2#12, 1#12EG, .75" C	42" AFF	
CV8	POS / KDS MACHINE	120V	5-20R / GFI	KP1-1	2#12, 1#12EG, .75" C	18" AFF	
CV9	POS / KDS MACHINE	120V	5-20R / GFI	KP1-31	2#12, 1#12EG, .75" C	18" AFF	
CV10	POS / KDS MACHINE	120V	5-20R / GFI	KP1-31	2#12, 1#12EG, .75" C	18" AFF	

## LEVEL 1 MECHANICAL CIRCUIT SCHEDULE

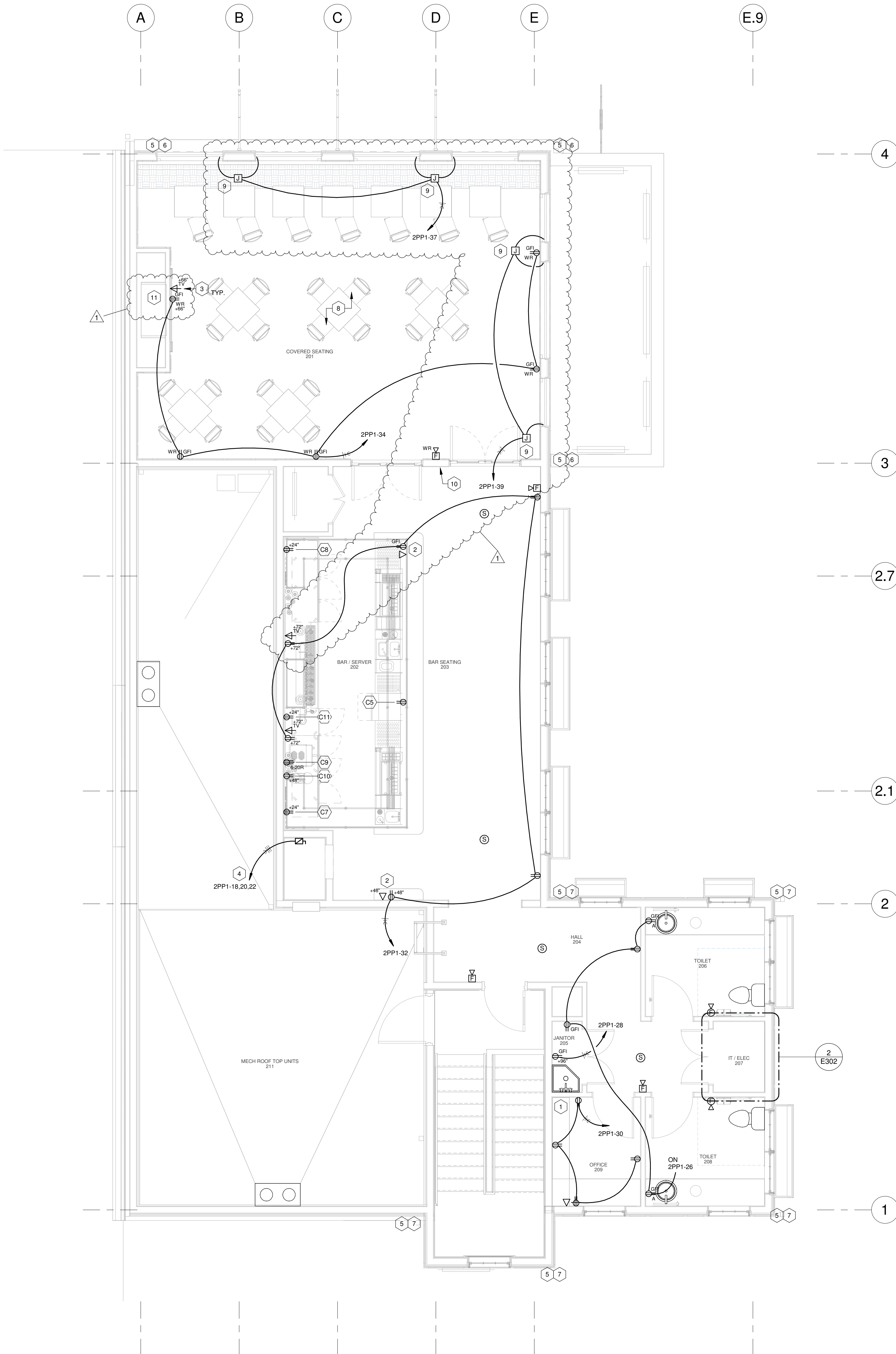
ITEM	VOLTAGE	CIRCUIT	WIRE/CONDUIT	DISC.
EUH-1	120V	PP1-41	(2#12, 1#12EG, .75" C)	TOGGLE
WH-1	208/3	MDP-10	SEE ONE-LINE DIAGRAM	
AIR COMPRESSOR	208/3	PP1-38,40,42	(3#12, 1#12EG, .75" C)	NF 240V/30A/3P

SCHEDULE NOTES:  
1. DISCONNECT SAFETY SWITCHES: HD = HEAVY DUTY, NF = NON-FUSED, 3R = NEMA 3R ENCLOSURE  
2. VERIFY REQUIREMENT FOR NEUTRAL CONDUCTORS PRIOR TO INSTALLATION.  
3. PROVIDE MULTI-CONDUCTOR INTERCONNECTION CABLE BETWEEN INDOOR AND OUTDOOR UNIT PER MANUFACTURER INSTRUCTION. CONDUCTORS SHALL NOT BE SMALLER THAN #12AWG.



1300 Brookwood Drive  
Little Rock, Arkansas 72202  
501.664.3311 www.batsoninc.com





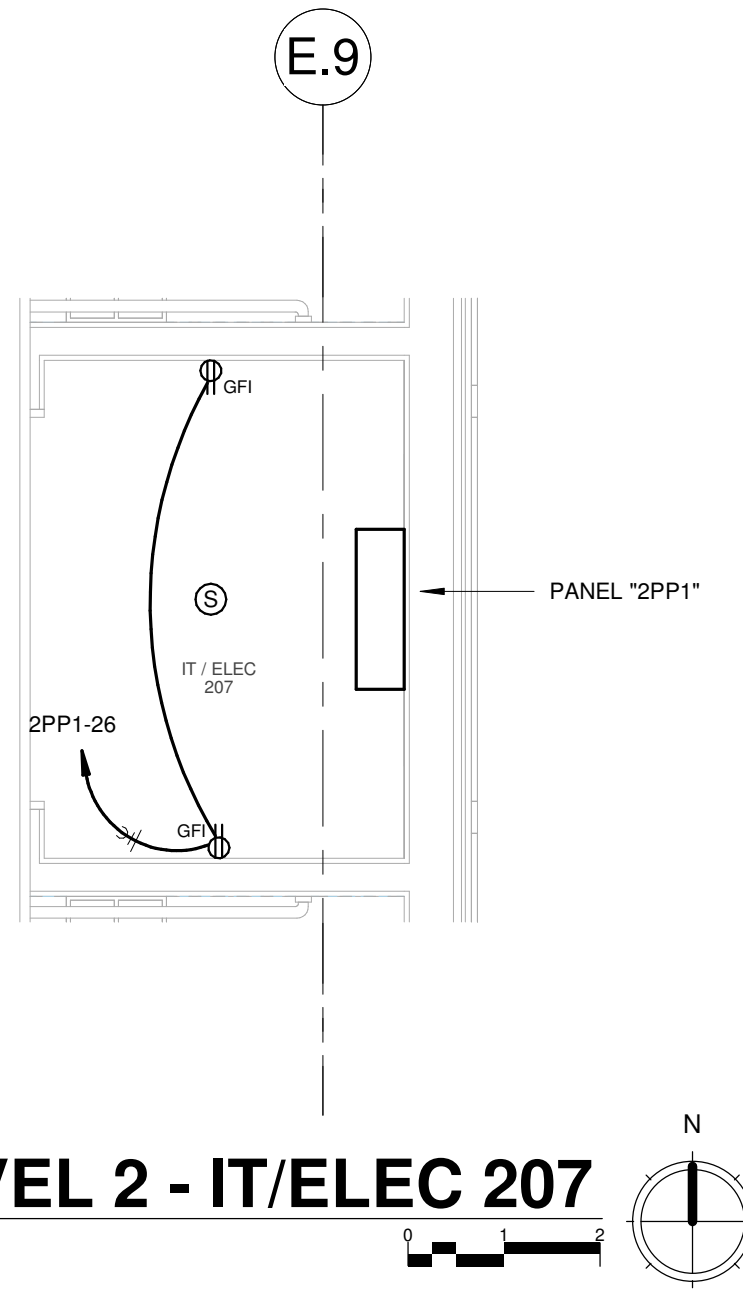
1  
E302  
LEVEL 2 - POWER & SYSTEMS PLAN  
1/4" = 1'-0"

## GENERAL ELECTRICAL NOTES

1. HOMERUN ALL TELEPHONE/DATA/TV CONDUITS BACK TO OFFICE 209 WHERE STUB-UPS OCCUR OVER HARD CEILING AREAS.
2. ALL WIRING DEVICES INSTALLED IN BASEBOARDS SHALL BE INSTALLED IN SINGLE GANG BACKBOXES AND MOUNTED HORIZONTALLY. VERIFY EXACT MOUNTING HEIGHTS WITH ARCHITECT PRIOR TO BEGINNING ROUGH-INS.
3. COORDINATE ALL WIRING DEVICE EXACT LOCATIONS AND ROUGH-IN HEIGHTS WITH ARCHITECT PRIOR TO BEGINNING WORK.
4. REFER TO KITCHEN EQUIPMENT ELECTRICAL SCHEDULE ON SHEET E301 FOR CIRCUIT REQUIREMENTS.

## KEYED ELECTRICAL NOTES

1. PROVIDE AND INSTALL (1) 4" C SLEEVE THRU FLOOR INTO STORAGE 111 FOR COMMUNICATIONS CABLING. EXTEND SLEEVE UP TO 7'-6" ABOVE FINISH FLOOR. INSTALL INSULATED THROAT CONNECTORS ON BOTH ENDS OF CONDUIT.
2. POWER AND DATA FOR POINT-OF-SALE (POS) MACHINE. VERIFY MOUNTING HEIGHT OF WIRING DEVICES PRIOR TO BEGINNING ROUGH-IN. CONNECT TO CIRCUIT AS INDICATED.
3. STUB UP 1" 25" FROM TELEVISION COMMUNICATIONS BACKBOX TO ABOVE ACCESSIBLE CEILING OR HOMERUN BACK TO OFFICE 209. TYPICAL ALL TELEVISION LOCATIONS.
4. PROVIDE AND INSTALL NEMA 1 HEAVY-DUTY FUSIBLE DISCONNECT RATED 240V/20A/2P FOR DUMBWATER. INSTALL W 20A DUAL ELEMENT TIME DELAY FUSES. COORDINATE WITH DUMBWATER INSTALLER FOR EXACT MOUNTING LOCATION DISCONNECT. INSURE ELECTRICAL INSTALLATION MEETS THE REQUIREMENTS OF THE AHJ.
5. PROVIDE AND INSTALL GFI/MP DUPLEX OUTLET IN SOFFIT FOR FUTURE CHRISTMAS LIGHTS.
6. CIRCUIT RECEPTACLE TO "PP1-34". ROUTE THRU SWITCH IN IT/ELEC 109.
7. CIRCUIT RECEPTACLE TO "PP1-36". ROUTE THRU SWITCH IN IT/ELEC 109.
8. ALL OUTLETS THIS ROOM SHALL BE PROVIDED WITH FLIP-COVER TYPE COVER PLATES. VERIFY FINISH WITH ARCHITECT.
9. PROVIDE AND INSTALL JUNCTION BOX FOR POWER TO PATIO SHADES. MOUNT JUNCTION BOX ABOVE ACCESS PANEL AND MAKE CONNECTION TO SHADES.
10. PROVIDE AND INSTALL CONDUIT AND BACKBOX TO MOUNT WIRELESS SHADE CONTROLLER. VERIFY EXACT ROUGH-IN LOCATION WITH ARCHITECT/OWNER.
11. CONNECT FIREPLACE TO CIRCUIT "2PP1-34".



2  
E302  
LEVEL 2 - IT/ELEC 207  
1/2" = 1'-0"



801 South Spring Street  
Little Rock, AR 72201  
501.378.0878 office

509 W. Spring St. | Suite 150  
Fayetteville, AR 72701  
479.444.0473 office  
[polkstanleywilcox.com](http://polkstanleywilcox.com)

MEP ENGINEERING  
Batson Inc  
1300 Brookwood Dr  
Little Rock, AR 72202  
PH: 501.664.3311

**STRUCTURAL ENGINEERING**  
Engineering Consultants, Inc  
401 W Capitol Ave, Suite 305  
Little Rock, AR 72201  
PH: 501.376.3752

**CIVIL ENGINEERING**  
McClelland Consulting Engineers  
7302 Kanis Rd  
Little Rock, AR 72204  
PH: 501.371.0272

INTERIOR DESIGN  
Rebecca Callis  
840 Cherokee Rd  
Charlotte, NC 28207  
PH: 704.301.4961

PSW Job Number:  
1001B

BID DOCUMENTS

ENGLISH PUB

Little Rock, Arkansas

Issue Date:  
01.31.25

REVISIONS		
NUMBER	DATE	DESCRIPTION
1	02.25.25	Addendum 1

Contents:  
ELECTRICAL  
ONE-LINE  
DIAGRAM &  
PANEL  
SCHEDULES

**STATE OF ARKANSAS**  
 REGISTERED PROFESSIONAL ENGINEER  
 No. 99  
 13431  
 CHRIS M. HAYS  
 01-01-25

**B**

**Batson Inc.**  
 ENGINEERING SOLUTIONS

1300 Brookwood Drive  
 Little Rock Arkansas 72202  
 501-661-2311 • [www.batson.com](http://www.batson.com)

**CERTIFICATE OF AUTHORIZATION**  
 BATSON INC.  
 No. 99  
 ARKANSAS DOMESTIC CORPORATION

PANEL BOARD SCHEDULE													
Panel Name:		Volts: 120/208		Mains: 225A		Fed From: MDP		Interrupting Rating: 22kAIC					
TYPE:		phase:	wire:	lugs	breaker	surface	flush	top	bottom	COPPER BUS GROUND BAR			
SQUARE D "NQ"		3	4	X			X	X	X				
BRANCH BREAKERS													
ITEM	CKT	CKT	LOAD (KVA)			LOAD(KVA)			CKT	CKT	ITEM		
	BKRN	NO.	A	B	C	A	B	C	NO.	BKRN			
PIZZA PREP REFRIGERATOR	20/1	1	0.54			0.72			2	20/1	SODA ICE & BEVERAGE DISPENSER		
PIZZA PREP REFRIGERATOR	20/1	3		0.54			0.84		4	20/1	CARBONATOR FOR SODA DISPENSER		
UNDERCOUNTER REFRIGERATOR	20/1	5			0.24			0.38	6	20/1	UNDERCNTR CARBONATION CHILLER SYSTEM		
UNDERCOUNTER REFRIGERATOR	20/1	7	0.24			1.44			8	20/1	GLASSWASHER, UNDERCOUNTER		
RAPID COOK OVEN	20/2	9		1.66			0.26		10	20/1	REFRIGERATED BACK BAR CABINET		
		11			1.66			0.26	12	20/1	REFRIGERATED BACK BAR CABINET		
REACH-IN REFRIGERATOR	20/1	13	0.65			1.25			14	20/1	ESPRESSO / CAPPUCCINO MACHINE		
REFRIGERATED WORK TOP	20/1	15		0.26			1.25		16	20/1			
BEVERAGE COUNTER	20/1	17			1.80			0.60	20	20/1	COFFEE GRINDER		
ICE MAKER, CUBE STYLE	20/1	19	1.38				0.30		20	20/1	FREEZER MUG FROSTER		
ICE MAKER, NUGGET	20/1	21		1.82				1.00	22	20/1	HOOD CONTROL PANEL		
COFFEE / TEA BREWLER	20/1	23			1.68				24	SPACE	W/ BUSSING		
COFFEE / TEA BREWLER	20/1	25	1.68						26	SPACE	W/ BUSSING		
DISH MACHINE	20/1	27		1.50					28	SPACE	W/ BUSSING		
RECPTS KITCHEN CONVENIENCE	20/1	29			0.60				30	SPACE	W/ BUSSING		
RECPTS KITCHEN CONVENIENCE	20/1	31	0.60						32	SPACE	W/ BUSSING		
SPARE	20/1	33		0.00					34	SPACE	W/ BUSSING		
SPARE	20/1	35			0.00				36	SPACE	W/ BUSSING		
SPARE	20/1	37	0.00						38	SPACE	W/ BUSSING		
SPARE	20/1	39		0.00					40	SPACE	W/ BUSSING		
SPARE	20/1	41			0.00				42	SPACE	W/ BUSSING		
PROVIDE GFCI-TYPE BREAKERS FOR THE FOLLOWING CKTS: #1 THRU #27, #2 THRU #20.			5.09	5.78	5.98	3.71	3.35	1.24			PROVIDE PANEL WITH STAINLESS STEEL FRONT COVER.		
			8.80	9.13	7.22	TOTALS							
			25.15			TOTAL CONN. LOAD KVA							

PANEL BOARD SCHEDULE													
Panel Name:		Volts:		Mains:		Fed From:				MDP		Interrupting Rating	
2PP1		120/208		225A		Mounting:				Feeder:		22kAIC	
TYPE:		phase:		wire:		lugs:		breaker:		surface:		flush:	
SQUARE D "NQ"		3		4		X		X		X		X	
BRANCH BREAKERS													
ITEM		CKT	OKT	LOAD (KVA)			LOAD(KVA)			CKT	OKT	ITEM	
		BKR	NO.	A	B	C	A	B	C	BKR	NO.		
WH-2 @ JANITOR 205		20	1	1.50			1.44			2	20/1	GLASSWASHER, UNDERCOUNTER	
			3		1.50			0.26		4	20/1	REFRIGERATED BACK BAR CABINET	
RH-1		30/2	5			2.25			0.26	6	20/1	REFRIGERATED BACK BAR CABINET	
			7	2.25			1.25			8	20/2	ESPRESSO / CAPPUCCINO MACHINE	
RH-2		30/2	9		2.25			1.25		10			
			11			2.25			0.60	12	20/1	COFFEE GRINDER	
RH-3		30	13	2.25			0.30			14	20/1	FREEZER MUG FROSTER	
			15		2.25			1.00		16	20/1	RECEPTS LOW & HIGH ROOF CONVENIENCE	
RH-4		30/2	17			2.25			1.08	18	20/3	DUMBWATER	
			19	2.25				1.08		20			
RH-5		30/2	21		2.25				1.08	22			
			23			2.25				24		SHUNT-TRIP TYPE BREAKER	
RH-6		30/2	25	2.25			1.20			26	20/1	RECEPTS ELEC RM. TLTS, JAN, HALL	
			27		2.25			0.20		28	20/1	RP-2 RECIRCULATION PUMP IN JANITOR	
EF-1		20/1	29			0.36			1.00	30	20/1	RECEPTS OFFICE 209	
EF-2		20/1	31	0.70						32	20/1	RECEPTS BAR SERVER TV's & SEATING, POS	
LIGHTS BAR, HALL, RESTRMS, OFFICE		20/1	33		0.60			1.00		34	20/1	RECEPTS SEATING 201, SEATING TV	
LIGHTS COV. DINING CANS, FANS, SCONES		20/1	35			0.60			0.65	36	20/2	DHP-1 / DSS-1	
COVERED PATIO SHADES		20/1	37	1.25				0.65		38	20/1	DHP-2 / DSS-2	
COVERED PATIO SHADES		20/1	39		0.94			0.65		40			
BARS		20/1	41			0.00			0.65	42			
<b>PROVIDE HANDLE PADLOCK</b> <b>ATTACHMENT SQUARE D #002PAF</b> <b>FOR THE FOLLOWING CKTS: 36/38,</b> <b>40/42</b>													
				12.45	12.04	9.96		6.92	5.44	4.24			
				19.37	17.48	14.20	TOTALS						
				51.05			TOTAL CONN. LOAD KVA						

## ONE-LINE FEEDER SCHEDULE

1 809	2 SETS (4#500 kcmil, 4°C) + (2) SPARE 4°C
2 809	2 SETS (4#500 kcmil, 1#1/0GR, 4°C)
3 223	(4#4/0, 1#4GR, 2.5°C)
4 159	(3#1/0, 1#6GR, 1.5°C)
5 100	(3#3, 1#6GR, 1.5°C)
6 70	(3#4, 1#8GR, 1.5°C)
7 40	(3#8, 1#10GR, 1°C)
8 30	(3#1/0, 1#10GR, 1°C)
9 173	(3#2/0, 1#6GR, 2°C)

- ENGRAVED NAMEPLATE NOTES:**
1. NAMEPLATES SHALL BE INSTALLED ON ALL ELECTRICAL EQUIPMENT, PANELBOARDS, TRANSFORMERS, SAFETY SWITCHES AND STARTERS.
  2. NAMEPLATES SHALL BE OF THE LAMINATED BAKELITE TYPE AND SECURELY FASTENED TO EQUIPMENT.
  3. NAMEPLATE SIZE SHALL BE 1 1/2" X 4" WITH BEVELED EDGES.
  4. NAMEPLATES SHALL BE BLACK IN COLOR WITH WHITE LETTERING. LETTERS SHALL BE 1/4".
  5. NAMEPLATE SHALL INCLUDE PANEL OR EQUIPMENT DESIGNATION, AMPERAGE, VOLTAGE PHASE AND WIRE DESIGNATION (E.G. 3W OR 4W).
  6. SUBMIT PANEL NAMEPLATE SCHEDULE WITH SHOP DRAWINGS FOR APPROVAL.

PANEL A  
225A, 120/208V, 3PH, 4W  
FED FROM PANEL MDP

TYPICAL PANEL NAMEPLATE

AHU-1  
200A, 208V 3-PHASE  
FED FROM PANEL MDP

TYPICAL EQUIPMENT NAMEPLATE

$$1/8'' = 1'-0''$$