

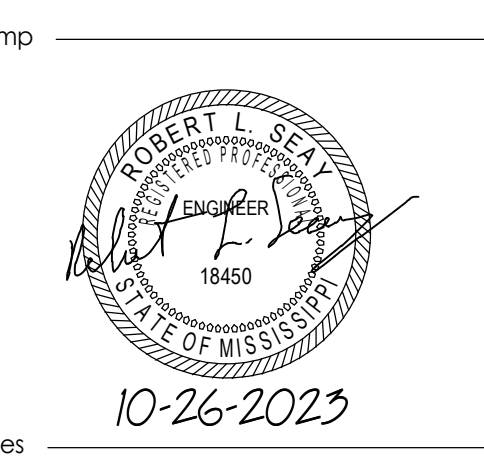
Project

Anduril Industries - McHenry, MS  
Rocket Motor Systems  
Additions and Renovations to Buildings 300, 301,  
302, 400, and 600 - McHenry, Mississippi

Design Phase

**CONSTRUCTION DOCUMENTS**

No.	Date	Description
1	01-24-2024	RB 001
2	11-21-2024	RB 013



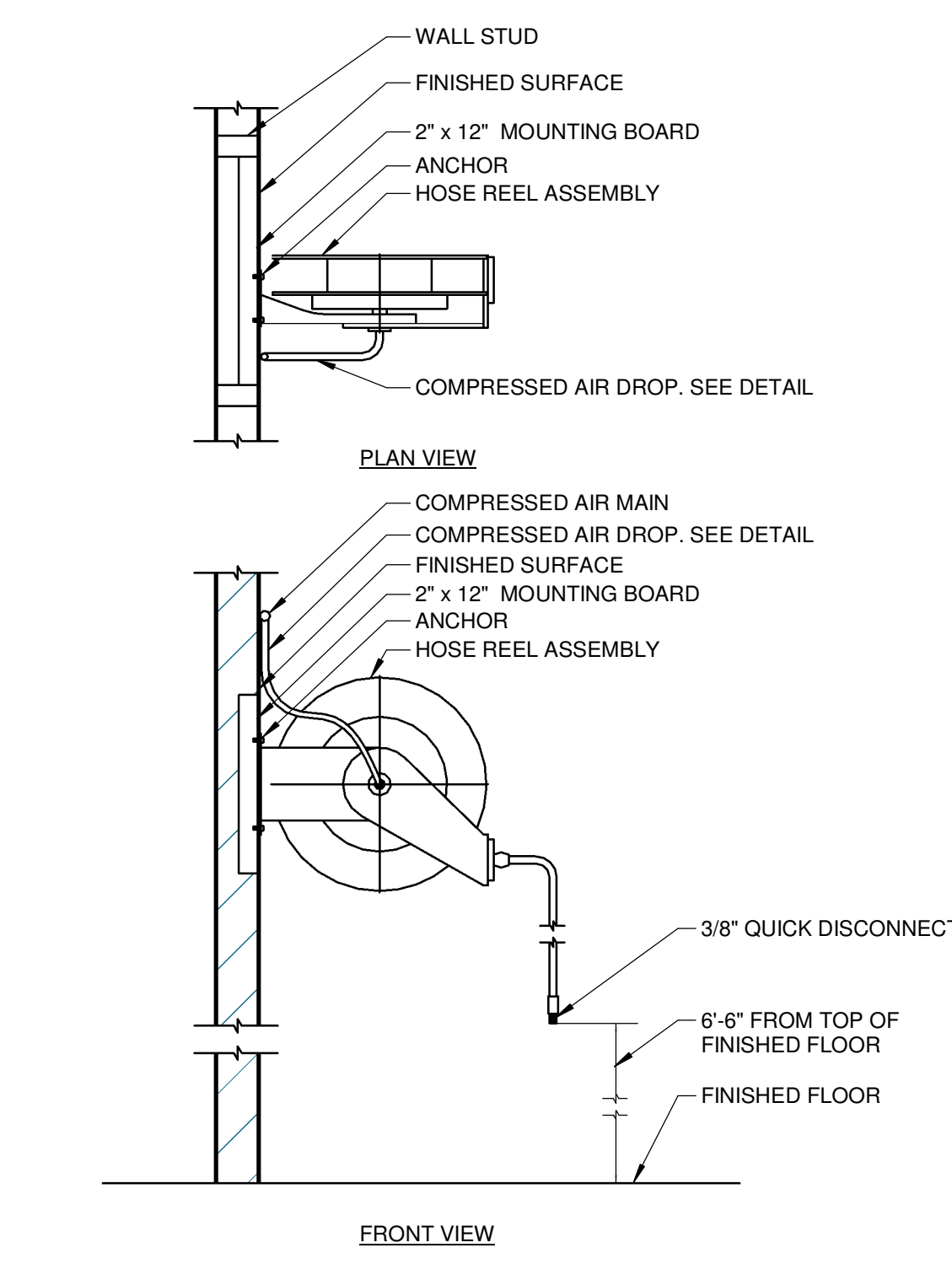
Notes:  
1. CROMWELL ARCHITECTS ENGINEERS, INC. ALL RIGHTS RESERVED  
2. THIS SHEET DESIGNED FOR COLOR PRINTING. CRITICAL INFORMATION MAY BE LOST WITH BLACK AND WHITE PRINTING.  
Project Number: 2023-047  
Issue Date: 10-26-2023  
Sheet Title: **PLUMBING DETAILS, SCHEDULES, & RISER - HENDERSON - BUILDING 600**  
Sheet Number:

**B600-P-102**

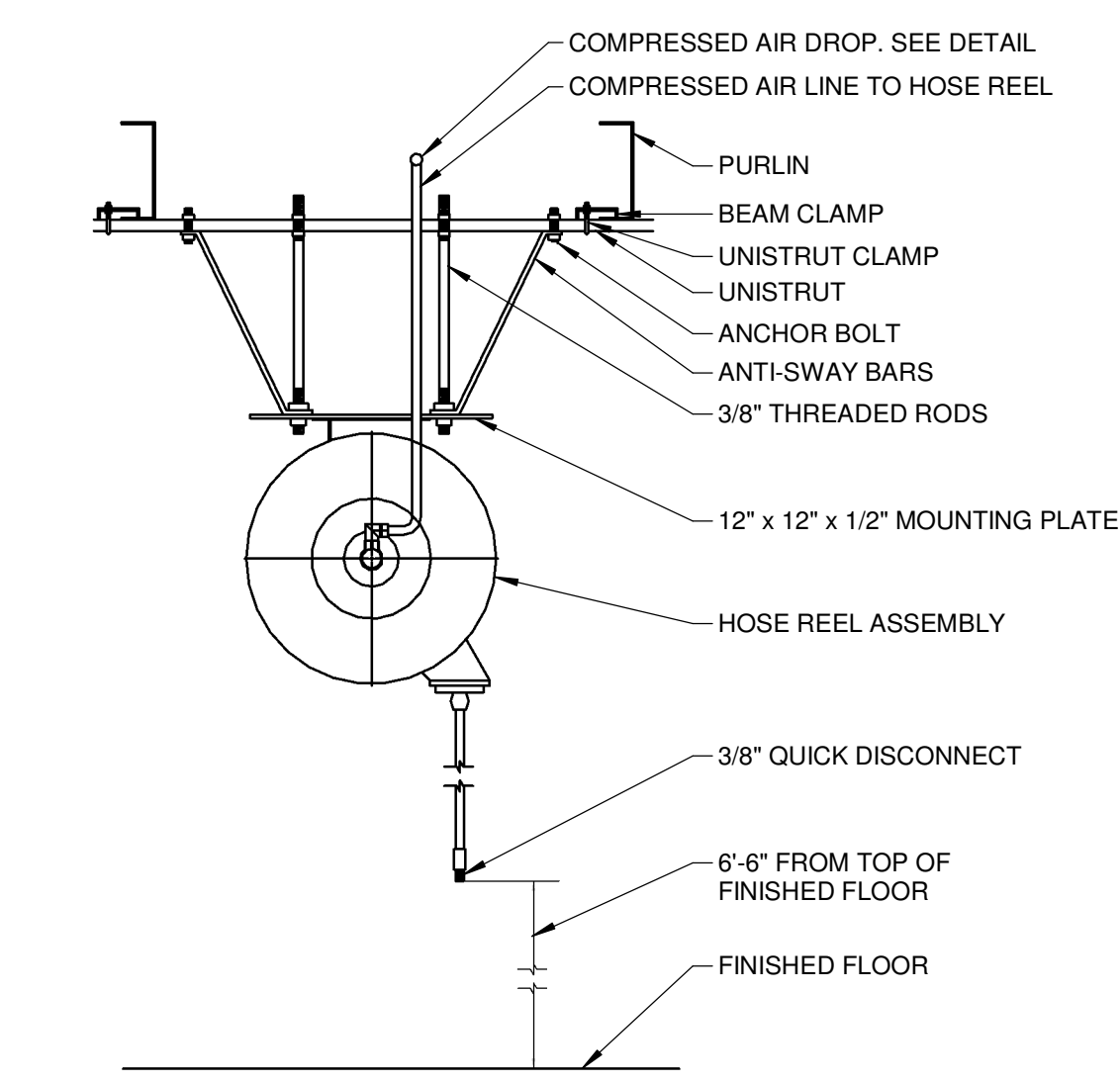
PLUMBING FIXTURE									
ID	BASIS OF DESIGN		SPECIFICATION						
	MANUFACTURER & MODEL	ACCESSORIES	COLD	HOT	WASTE	INDIRECT	VENT	TRAP	
SK-1	STERN WILLIAMS, #NSFB124-J		1/2"	1/2"	---	---	---	1-1/2"	SINK - 27"x27"-1/2"x14", FLOOR MOUNTED SINGLE SCULLERY SINK, 14 GAUGE TYPE 304 STAINLESS STEEL, CENTER DRAIN OUTLET, MOUNTED ON FOUR (4) 22" STAINLESS STEEL TUBE LEGS, FAUCET - 2.0 GPM, CHROME PLATED LEAD FREE, VACUUM BREAKER, PAIL HOOK, 3/4" HOSE THREADED OUTLET
FPWH-1	WOODFORD, 67	PROVIDE FULL PORT ISOLATION BALL VALVE FOR FIXTURE.	3/4"	---	---	---	---	---	FREEZE PROOF WALL HYDRANT - SIZE FOR WALL THICKNESS 4", RED BRASS VALVE BODY, 3/8" SOLID BRASS OPERATING ROD, HARDENED STAINLESS STEEL STEM, ONE PIECE VALVE PLUNGER, COPPER CASTING TUBES, DRAIN PORT UNDER NOZZLE, 3/4" HOSE CONNECTION W/ HIGH FLOW DOUBLE CHECK BACKFLOW PREVENTER, ADJUSTABLE WALL CLAMP
FS-1	MIFAB, #FS1520-FL-150	MIFAB "MI-GARD" TRAP SEAL DEVICE.	---	---	---	---	2"	SEE PLAN	FLOOR SINK - 8"x8"x6"D, 3" PIPE SIZE, MEDIUM DUTY SQUARE TOP ACID RESISTANT PORCELAIN ENAMEL COATED INTERIOR AND LOOSE SET GRATE, 1/2 GRATE, W/ ANCHOR FLANGE AND WEEP HOLES, OTTOM ALUMINUM DOME STRAINER

PLUMBING ACCESSORY			
ID	BASIS OF DESIGN	UTILITY CONNECTION	SPECIFICATION
	MANUFACTURER & MODEL		
COTG	WADE, 6000-12 SERIES	SAME SIZE AS LINE, MAX 4"	CLEANOUT-TO-GRADE/DOUBLE-CLEANOUT-TO-GRADE - SAME SIZE AS LINE, MAX. 4", HEAVY DUTY CAST IRON, FERRULE, THREADED ADJUSTABLE HOUSING, INTEGRAL CLAMPING COLLAR, ABS PLUG, 6-3/4"DIA ROUND HEAVY DUTY DUCTILE IRON TOP
DCOTG	WADE, 6000-12 SERIES	SAME SIZE AS LINE, MAX 4"	CLEANOUT-TO-GRADE/DOUBLE-CLEANOUT-TO-GRADE - SAME SIZE AS LINE, MAX. 4 INCH, HEAVY DUTY CAST IRON, FERRULE, THREADED ADJUSTABLE HOUSING, INTEGRAL CLAMPING COLLAR, ABS PLUG, 7-1/8 INCH SQUARE HEAVY DUTY DUCTILE IRON TOP

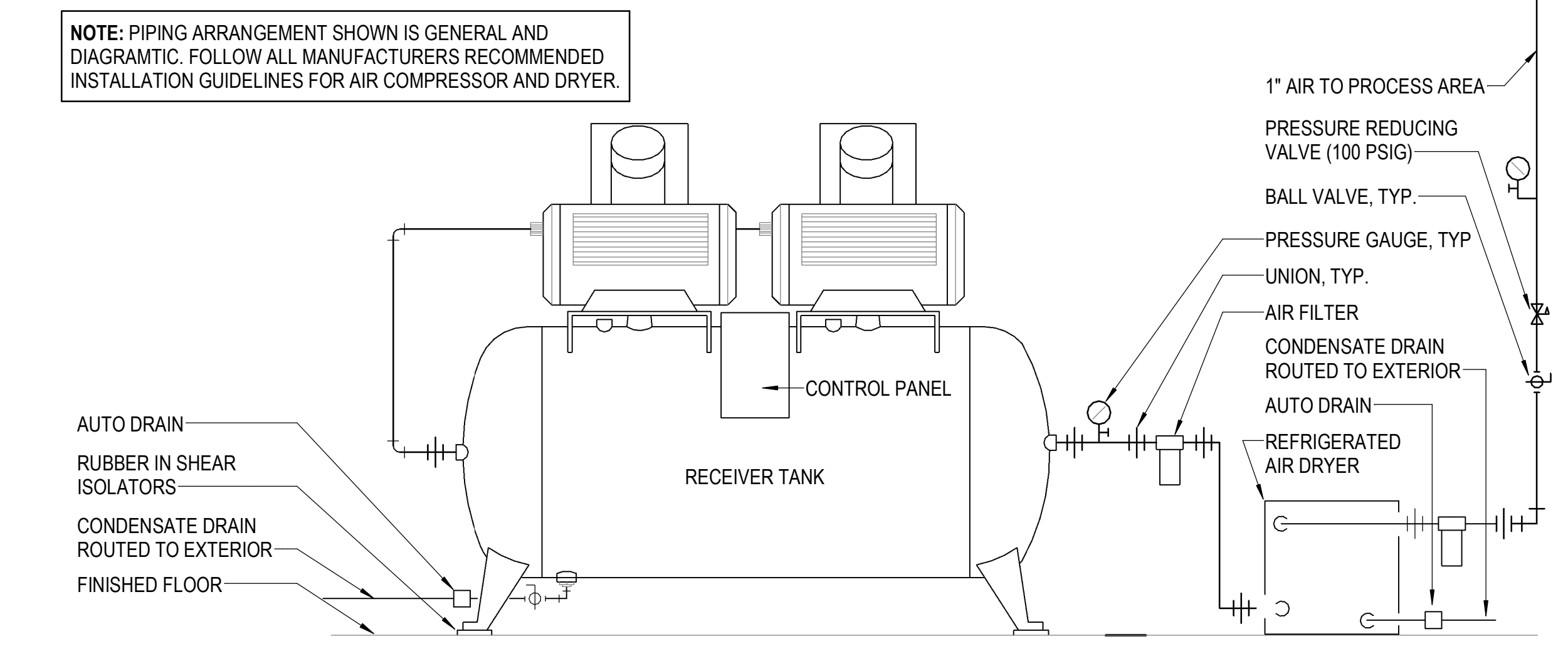
PLUMBING EQUIPMENT							
ID	BASIS OF DESIGN	UTILITY CONNECTIONS	ELECTRICAL	PHASE	POWER	AMPS	SPECIFICATION
	MANUFACTURER & MODEL		CONNECTION TYPE	VOLTAGE			
AC-1	INGERSOLL RAND, COMPRESSOR #2-254SE7.5, DRYER #D60IT, FILTER #FA75IG & #FA75IH	3/4" CA	HARDWIRED	460 V	3	7.5 HP 11 A	RECIPROCATING AIR COMPRESSOR - MAX PRESSURE 175 PSI, 5HP OR 7.5 HP, 53.2 CFM CAPACITY (FREE AIR DELIVERY), 100% REDUNDANT DUPLEX MOTORS MOUNTED ON 80 GAL RECEIVER TANK, DRYER - HIGH TEMPERATURE REFRIGERATED DRYER, ACCOMMODATES AIR TEMP UP TO 200F, 203 PSI RATED PRESSURE, .37kW NOMINAL POWER, 35 CFM CAPACITY (FAD), INLET/OUTLET FILTER W/AUTODRAIN



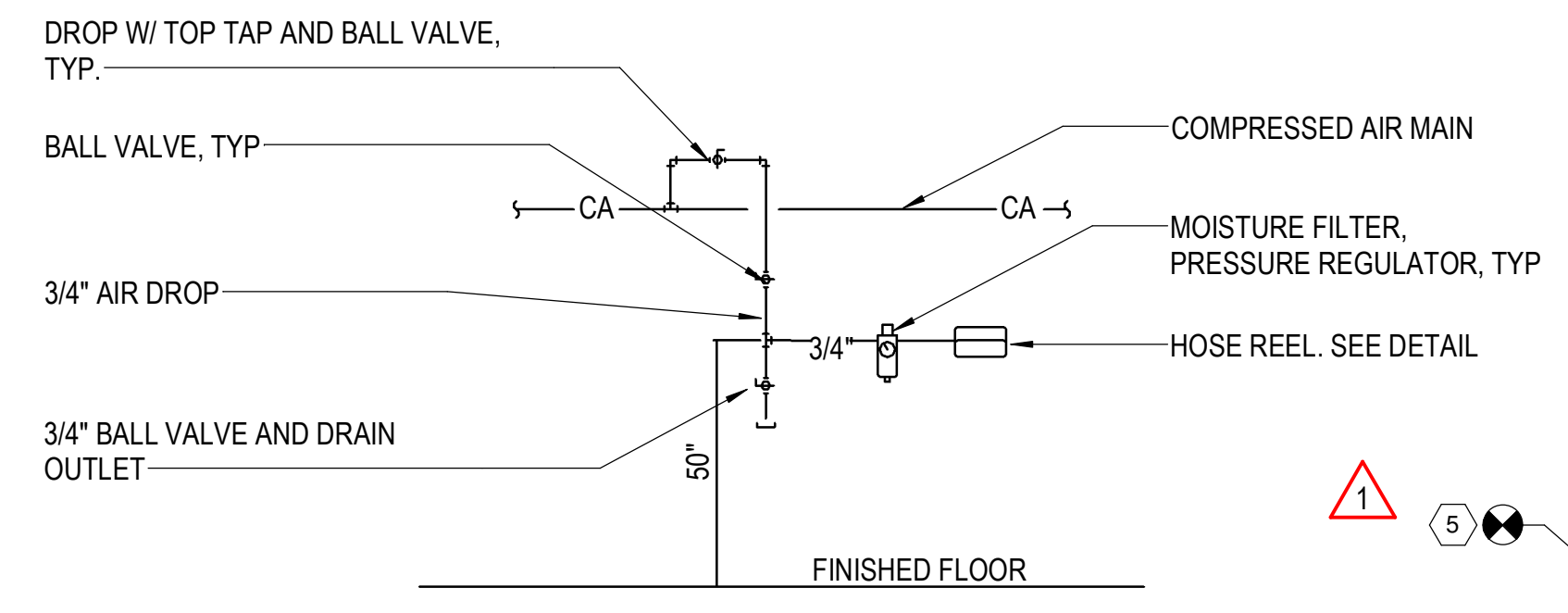
**1 WALL MOUNTED HOSE REEL**  
NOT TO SCALE



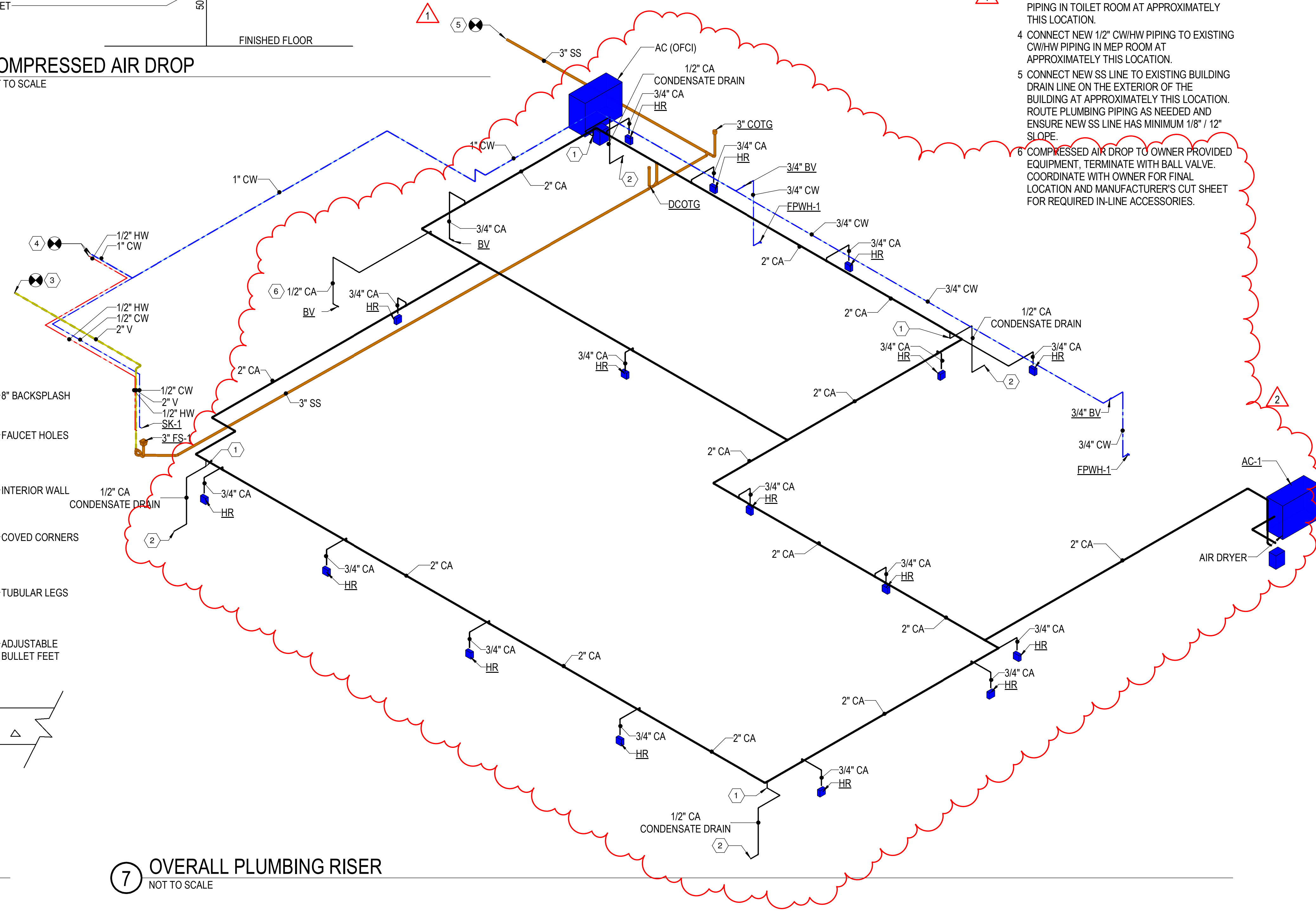
**2 STRUCTURE MOUNTED HOSE REEL**  
NOT TO SCALE



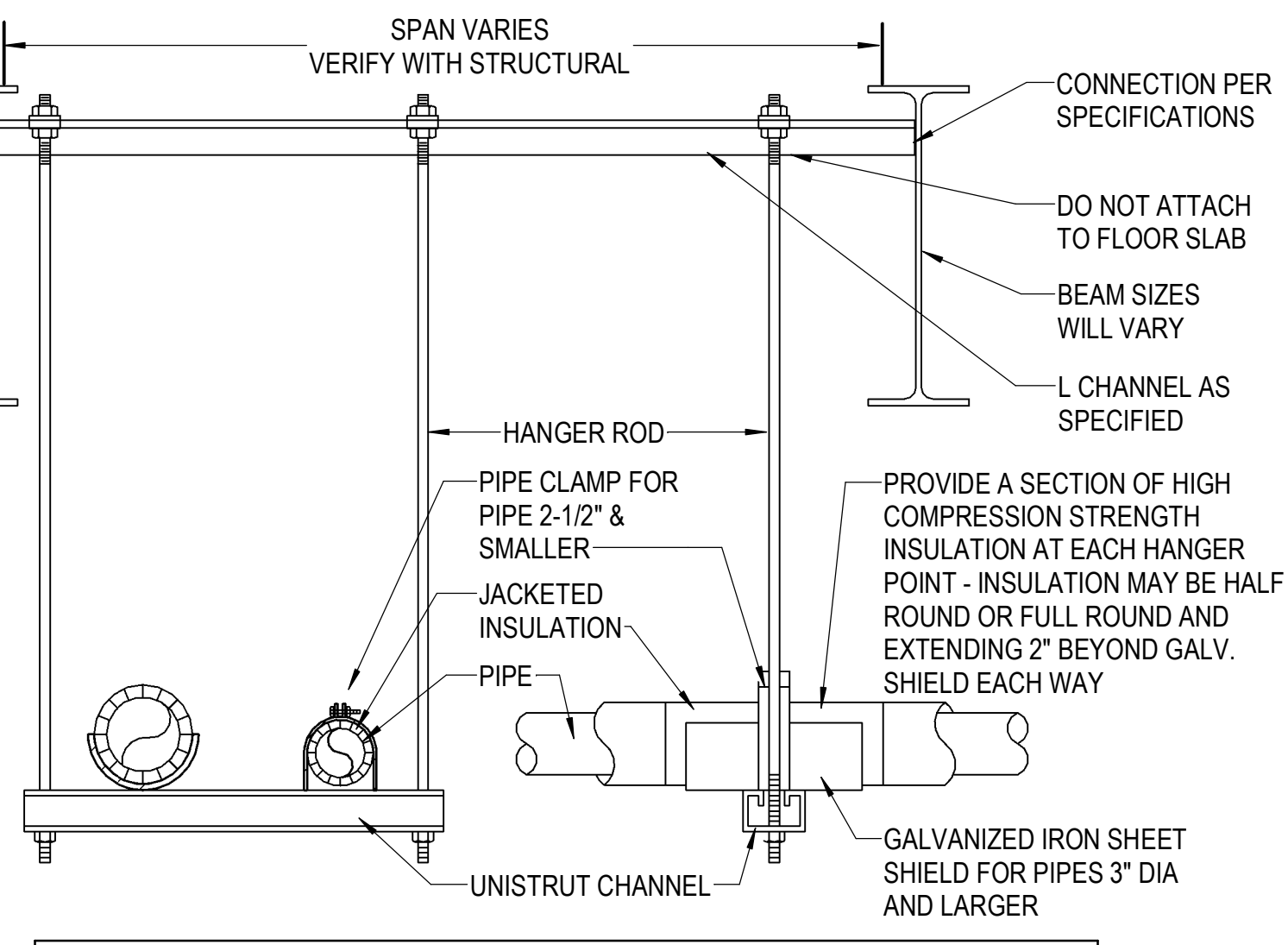
**3 COMPRESSED AIR SYSTEM W/ HORIZONTAL RECEIVER TANK**  
NOT TO SCALE



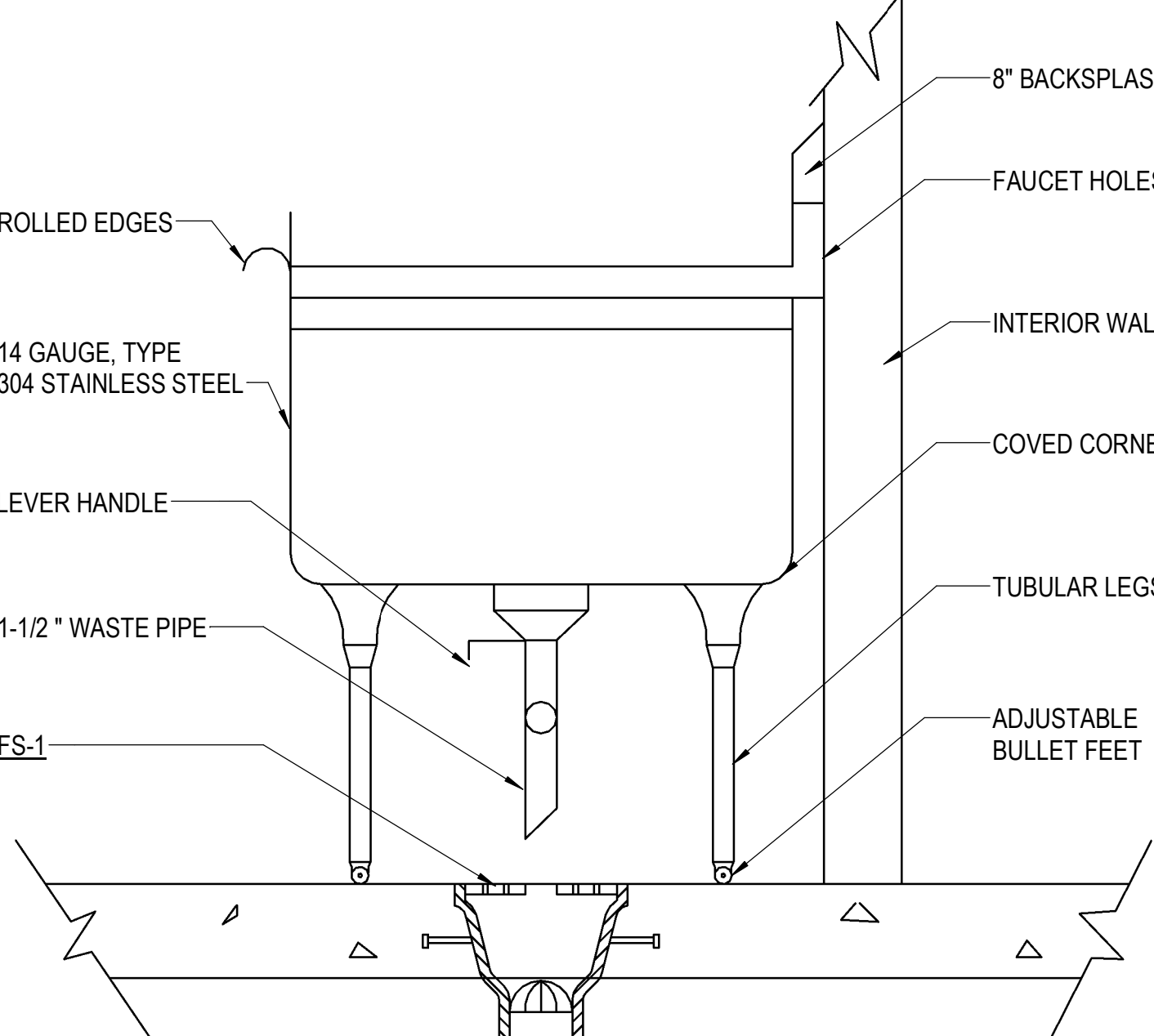
**4 COMPRESSED AIR DROP**  
NOT TO SCALE



**5 OVERALL PLUMBING RISER**  
NOT TO SCALE



**6 TRAPEZE PIPE HANGER**  
NOT TO SCALE



**7 SCULLERY SINK DETAIL - SK-1**  
NOT TO SCALE

**KEYED NOTES**

- 1 AUTOMATIC COMPRESSED AIR DRAIN, ATLAS END-330, INSTALL AT LOW POINT OF PIPING. ROUTE DRAIN LINE TO EXTERIOR.
- 2 COMPRESSED AIR CONDENSATE DRAIN ROUTED TO EXTERIOR.
- 3 CONNECT NEW V LINE TO EXISTING PLUMBING PIPING IN TOILET ROOM AT APPROXIMATELY THIS LOCATION.
- 4 CONNECT NEW 1/2" CW/HW PIPING TO EXISTING CW/HW PIPING IN MEP ROOM AT APPROXIMATELY THIS LOCATION.
- 5 CONNECT NEW SS LINE TO EXISTING BUILDING DRAIN LINE ON THE EXTERIOR OF THE BUILDING AT APPROXIMATELY THIS LOCATION. ROUTE PLUMBING PIPING AS NEEDED AND ENSURE NEW SS LINE HAS MINIMUM 1/8" / 12" SLOPE.
- 6 COMPRESSED AIR DROP TO OWNER PROVIDED EQUIPMENT. TERMINATE WITH BALL VALVE. COORDINATE WITH OWNER FOR FINAL LOCATION AND MANUFACTURER'S CUT SHEET FOR REQUIRED IN-LINE ACCESSORIES.

- NOTES:
1. INSULATION TO BE CONTINUOUS THROUGH HANGERS. DO NOT BREAK INSULATION AT SUPPORTS. DO NOT INSULATE AROUND HANGERS.
  2. INSULATION JACKET TO BE CONTINUOUS THROUGH PIPE SUPPORT COMPONENTS.
  3. USE CLEVIS HANGERS FOR SINGLE PIPE RUNS. USE TRAPEZE HANGERS TO GROUP AS MUCH PIPING AS POSSIBLE PER HANGER.

- NOTE:
1. FOR SINKS IN PREPARATION ROOM ONLY