

Project

Anduril Industries - McHenry, MS  
Rocket Motor Systems  
Additions and Renovations to Buildings 300, 301,  
302, 400, and 600 - McHenry, Mississippi

Design Phase

**CONSTRUCTION DOCUMENTS**

Revisions	No.	Date	Description
	1	11-14-2023	ADD 001
	2	03-18-2024	RB 003
	3	08-01-2024	RB 008
	4	11-21-2024	RB 013

Stamp



Notes

1. CROMWELL ARCHITECTS ENGINEERS, INC. ALL RIGHTS RESERVED
2. THIS SHEET DESIGNED FOR COLOR PRINTING. CRITICAL INFORMATION MAY BE LOST WITH BLACK AND WHITE PRINTING.

Project Number 2023-047

Issue Date 10-26-2023

Sheet Title

**POWER  
PLAN-HENDERSON -  
HENDERSON - BUILDING  
600**

Sheet Number

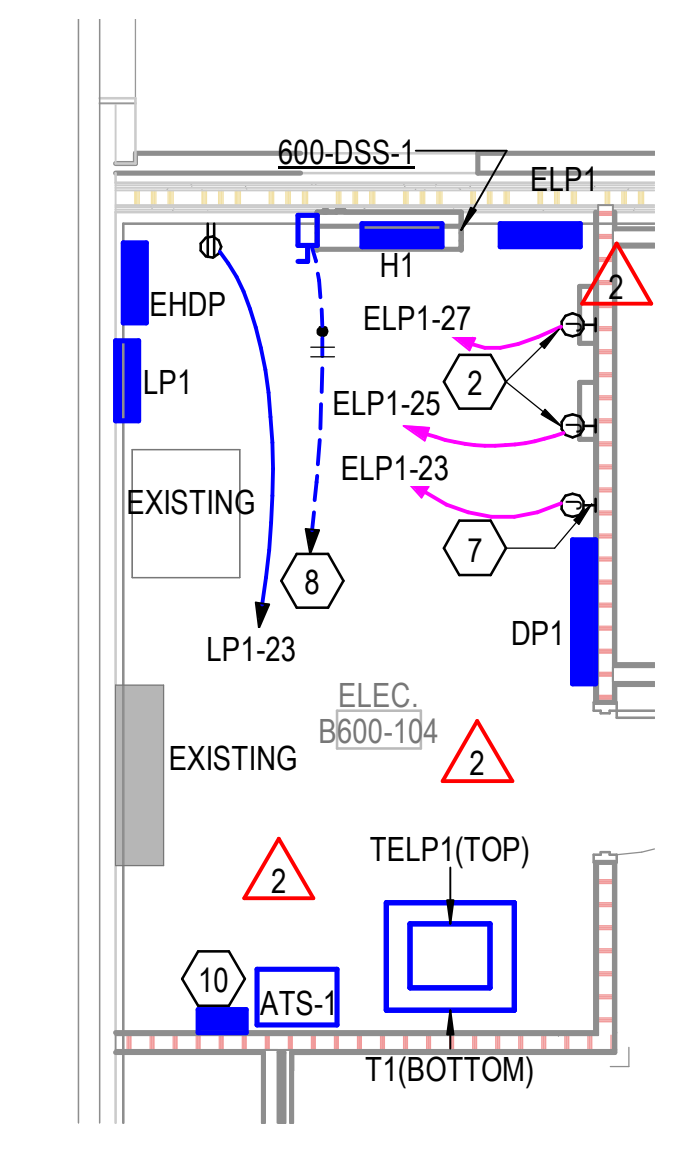
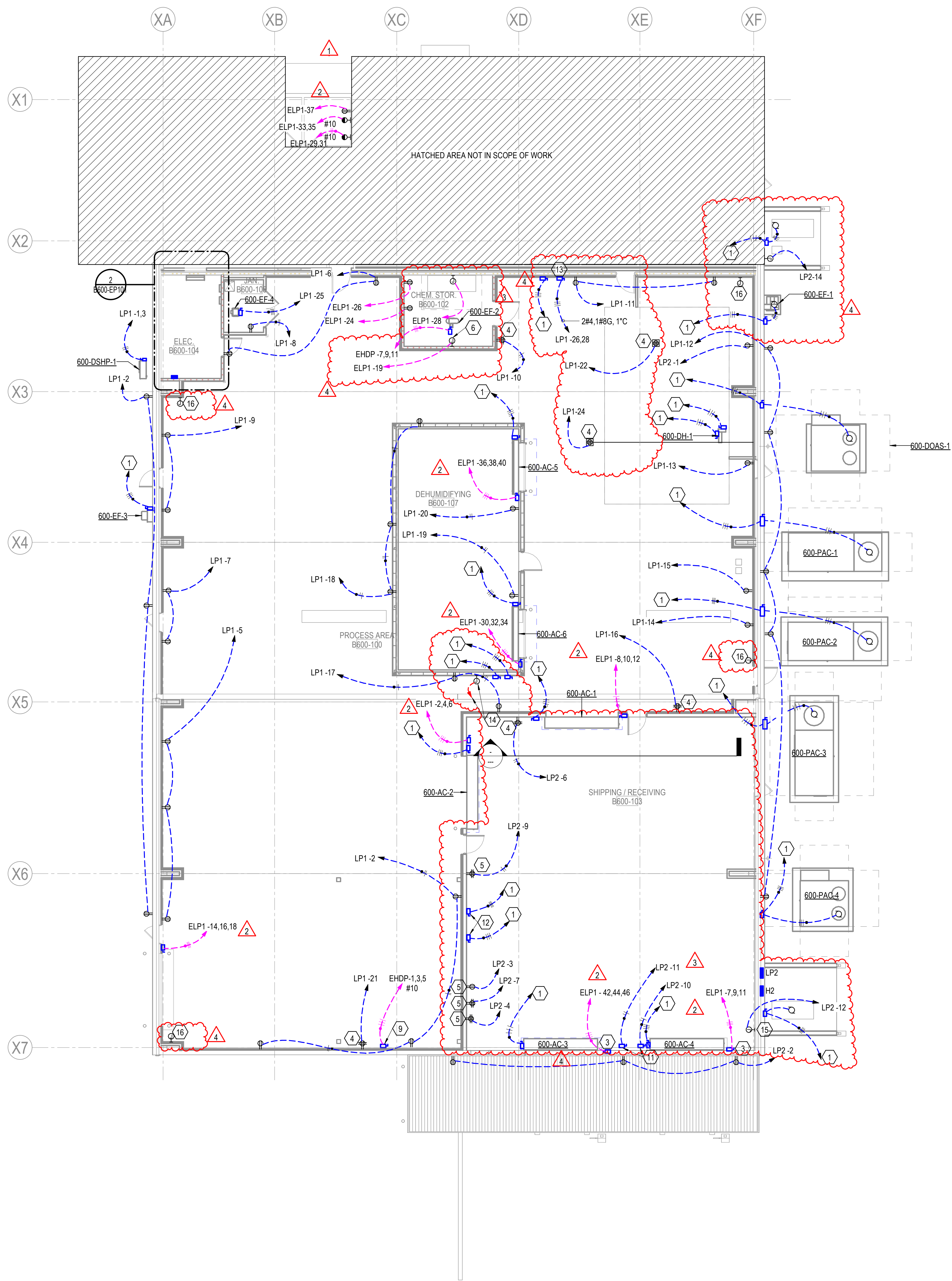
**B600-EP101**

**GENERAL NOTES:**

- DISCONNECTS POWERING MECHANICAL UNITS ARE FURNISHED WITH EQUIPMENT. COORDINATE EXACT LOCATION WITH EQUIPMENT INSTALLER.
- CONTRACTOR SHALL WIRE EQUIPMENT PER MANUFACTURER INSTRUCTIONS. ALL WIRING AND CONNECTIONS SHALL BE PER MANUFACTURERS RECOMMENDATIONS.
- COORDINATE ALL CONDUIT LOCATIONS WITH OTHER DISCIPLINES.
- ALL EXTERIOR RECEPTACLES SHALL BE GFI TYPE WITH HEAVY DUTY IN USE COVER.
- CHEMICAL MIXING STORAGE IS CONSIDERED CLASS II DIV 1. ALL ELECTRICAL INSTALLATIONS SHALL BE LISTED FOR AREAS PER NFPA 70.

**KEYED NOTES:**

- REFER TO SINGLE LINE DIAGRAM FOR CIRCUIT INFORMATION.
- JUNCTION BOX TO POWER FACP. COORDINATE EXACT LOCATION WITH INSTALLER.
- DISCONNECT TO POWER OVERHEAD DOOR. COORDINATE EXACT LOCATION WITH DOOR INSTALLER.
- RECEPTACLE TO POWER RFID WORKSTATION. COORDINATE EXACT ELEVATION WITH OWNER.
- RECEPTACLES TO POWER POWERED HAND CARTS. MOUNT RECEPTACLES 4'-0" AFF.
- JUNCTION BOX POWERS WEGHOUT EQUIPMENT. COORDINATE EXACT LOCATION WITH OWNER.
- POWER FOR DOOR CONTROLLER. COORDINATE WITH INSTALLER ON EXACT LOCATION.
- DISCONNECT POWERS INDOOR MECHANICAL UNIT. INDOOR UNIT IS POWERED FROM OUTDOOR UNIT.
- DISCONNECT TO POWER CRANE. POWER REQUIREMENTS ARE APPROXIMATE. COORDINATE EXACT POWER REQUIREMENTS WITH EQUIPMENT INSTALLER.
- ENCLOSED CIRCUIT BREAKER, REFER TO SINGLE LINE DIAGRAM FOR RATINGS.
- 240V 30A 3POLE NON FUSED DISCONNECT POWERS DOCK LEVELER. UTILIZE TWO POLES OF THE DISCONNECT. LOCATE DISCONNECT NEAR DOCK LEVELER CONTROL. SAWCUT AND ROUTE CONDUIT IN EXISTING CONCRETE FROM DOCK CONTROLLER LOCATION TO LEVELER. ROUTE CONDUIT AND LOCATE WEATHER PROOF JUNCTION BOX PER MANUFACTURER REQUIREMENTS. PROVIDE ALL OTHER NECESSARY ACCESSORIES, CABLING ETC FOR FULL DOCK FUNCTIONALITY.
- DISCONNECT POWERS FORKLIFT. COORDINATE EXACT LOCATION WITH OWNER BEFORE ROUGH IN. MAKE FINAL CONNECTION TO FORKLIFT CHARGER.
- 240V, 100A 3PH DISCONNECT TO POWER LINER MIXING EQUIPMENT. COORDINATE EXACT LOCATION WITH EQUIPMENT INSTALLER.
- PROVIDE NORMALLY CLOSED DRY CONTACT SIGNAL LINE FROM FIRE ALARM CONTROL PANEL TO JUNCTION BOX. COORDINATE EXACT LOCATION WITH INSTALLER.
- JUNCTION BOX POWERS DRYER. COORDINATE EXACT LOCATION WITH INSTALLER.
- JUNCTION BOX POWERS PLUMBING SOLENOID. COORDINATE EXACT LOCATION WITH INSTALLER. POWER FROM LP1-30.



**2 ENLARGED ELECTRICAL ROOM - HENDERSON - BUILDING 600**  
1/4" = 1'-0"  
SCALE: 1/4" = 1'-0"

**1 POWER PLAN - HENDERSON - BUILDING 600**  
1/8" = 1'-0"  
SCALE: 1/8" = 1'-0"