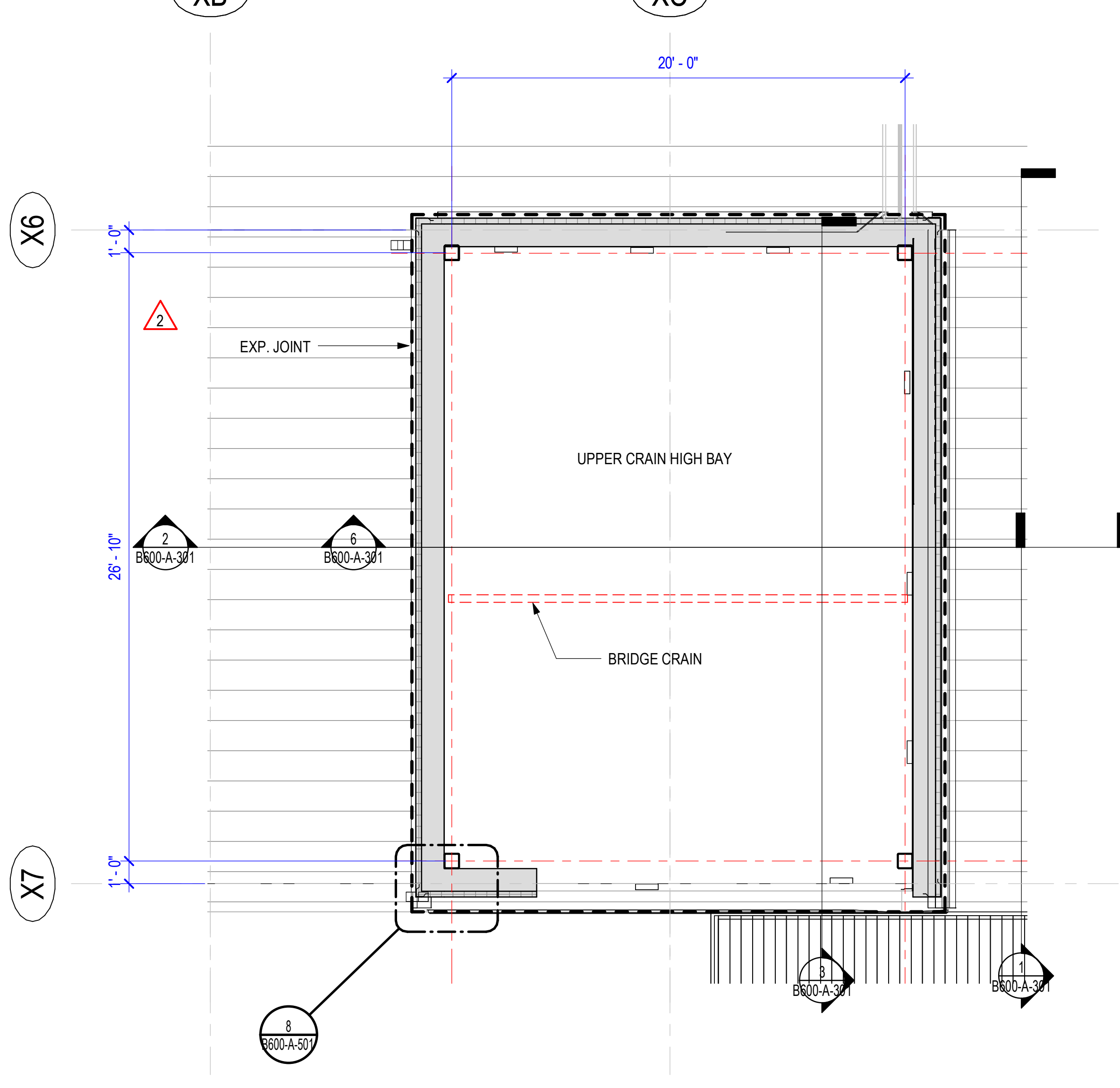


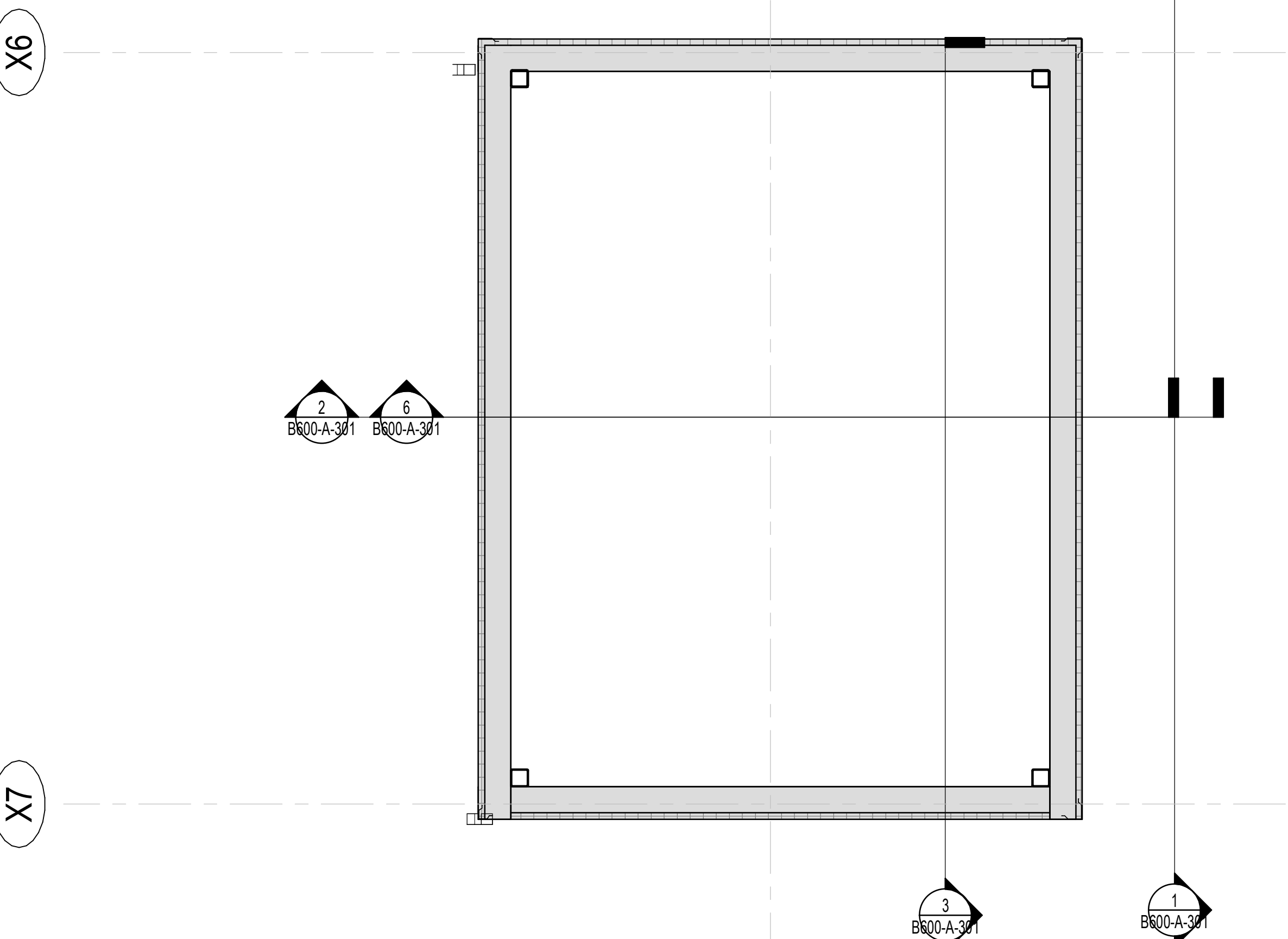
PARTITION TYPES			
Type Mark	Description	Fire Rating	STC
P1	GYP. BD. ON 3-5/8" METAL STUD	--	--
P2	GYP. BD. ON 3-5/8" METAL STUD	--	--
P3	1 HOUR RATED PARTITION - 3 5/8" METAL STUD FRAMING AND 5/8" TYPE-X GWB BOTH SIDES	1HR	--
P5	GYP. BD. ON 6" METAL STUD	3HR	--
P-4	1 HOUR RATED PARTITION - 3 5/8" METAL STUD FRAMING AND 5/8" TYPE-X GWB BOTH SIDES	1HR	--
P-11	SCHEMATIC 5"	--	--

KEYNOTES - MASTER - ALL BUILDINGS	
Key Value	Keynote Text
1	RESERVED
3	2" THICK INSULATED METAL PANEL - HORIZONTAL / CEILING - R-19 MIN.
4	RESERVED
13	NEW HOLLOW METAL DOOR & FRAME

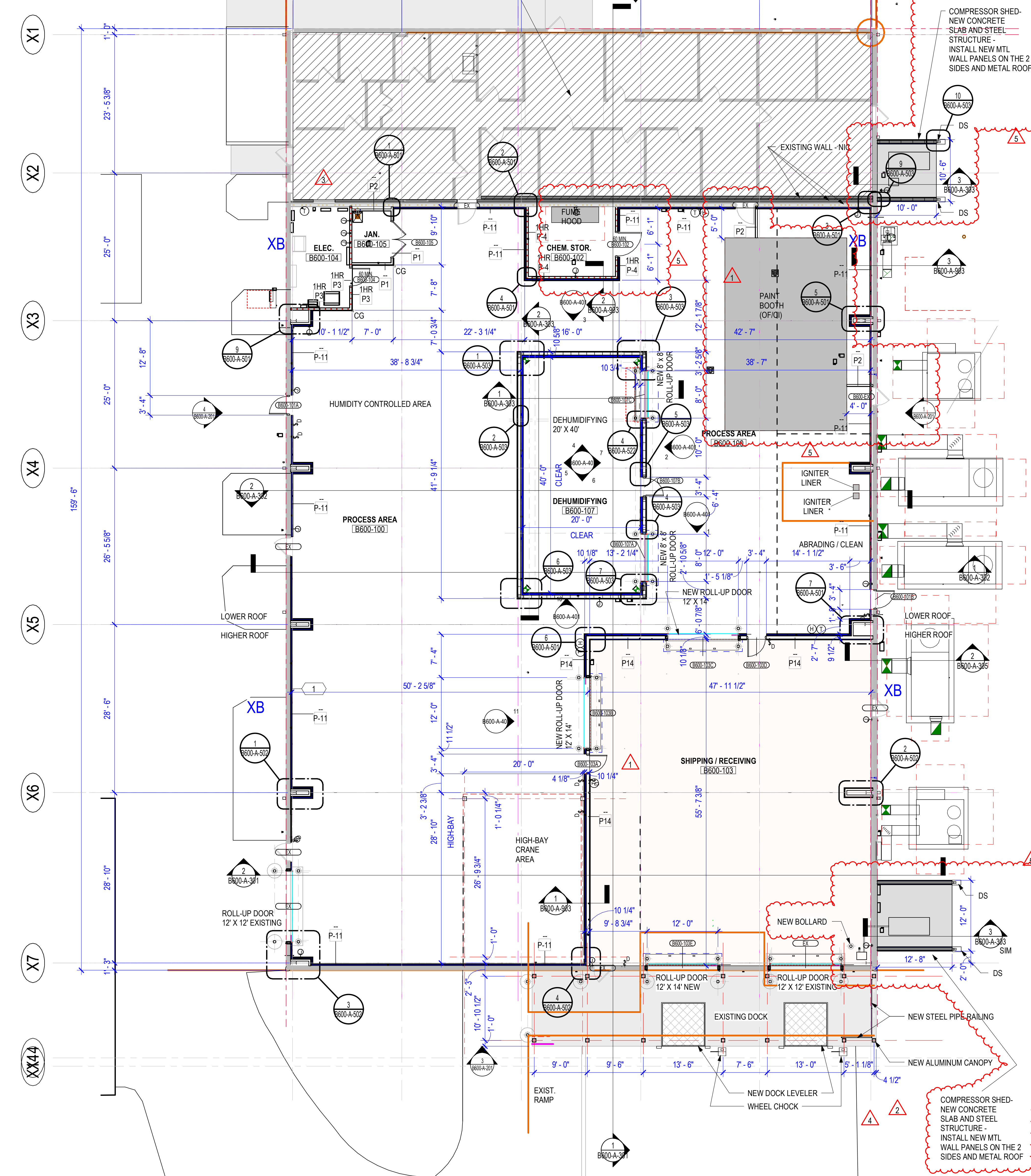
WILLIAM THOMAS MOORE, AIA
ARCHITECT
1300 East 6th Street
Little Rock, Arkansas 72202
501-372-2900



2 DETAIL PLAN-CRANE HIGH BAY
1/4" = 1'-0"



3 UPPER CRANE BAY
1/4" = 1'-0"



1 FLOOR PLAN - BUILDING 600 / HENDERSON
1/8" = 1'-0"

SCALE: 1/8" = 1'-0"

Project

Anduril Industries - McHenry, MS
Rocket Motor Systems
Additions and Renovations to Buildings 300, 301,
302, 400, 600 and 700 - McHenry, Mississippi

Design Phase

CONSTRUCTION DOCUMENTS

Revisions

No.	Date	Description
1	11-14-2023	RB 001
2	02-08-2024	RB 002
3	03-18-2024	RB 003
4	07-25-2024	RB 007
5	11-21-2024	RB 013

Stamp

Notes

1. THIS SHEET DESIGNED FOR COLOR PRINTING. CRITICAL INFORMATION MAY BE LOST WITH BLACK AND WHITE PRINTING.

Project Number **2023-047**
Issue Date **10-26-2023**
Sheet Title **FLOOR PLAN**
Sheet Number **B600-A-101**