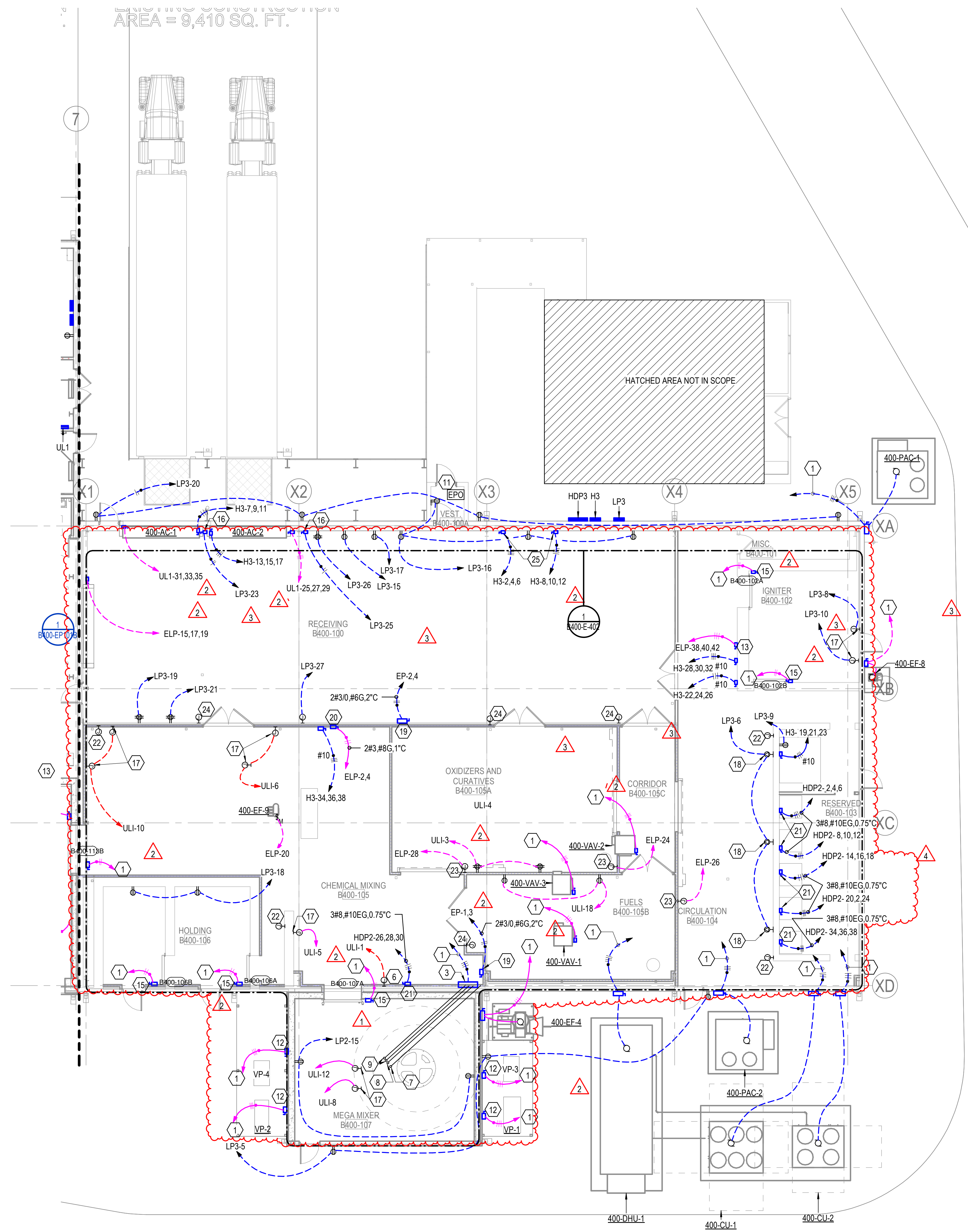


AREA = 9,410 SQ. FT.



GENERAL NOTES:

- A. DISCONNECTS POWERING MECHANICAL UNITS ARE FURNISHED WITH EQUIPMENT. COORDINATE EXACT LOCATION WITH EQUIPMENT INSTALLER.
- B. CONTRACTOR SHALL WIRE EQUIPMENT PER MANUFACTURER INSTRUCTIONS. ALL WIRING AND CONNECTIONS SHALL BE PER MANUFACTURERS RECOMMENDATIONS.
- C. COORDINATE ALL CONDUIT LOCATIONS WITH OTHER DISCIPLINES.
- D. ALL EXTERIOR RECEPTACLES SHALL BE GFI TYPE WITH HEAVY DUTY IN USE COVER.
- E. POWER INDICATED ON PLANS IS BASED ON BASIS OF DESIGN. IF DIFFERENT EQUIPMENT IS USED CONTRACTOR SHALL PROVIDE POWER PER MANUFACTURERS RECOMMENDATIONS AT NO EXTRA CHARGE.
- F. PER OWNER, IN CONSULTATION WITH THEIR SAFETY TEAM, THE OXIDIZERS AND FUEL ROOMS 105A, 105B ARE DESIGNATED CLASS II DIV 1. THE AREA 5'-0" OUT OF THE DOORS FROM RESPECTIVE ROOMS ARE DESIGNATED CLASS II DIV 2. ALL ELECTRICAL INSTALLATIONS SHALL LISTED AND INSTALLED IN ACCORDANCE WITH NEC FOR THE SPECIFIED AREA CLASSIFICATION.

KEYED NOTES:

- 1 SEE SINGLE LINE FOR PANEL AND CIRCUIT INFORMATION.
- 2 JUNCTION BOX POWERS WEIGHOUT EQUIPMENT. COORDINATE EXACT LOCATION WITH EQUIPMENT INSTALLER.
- 3 PROVIDE POWER TO MEGA MIXER CONTROL PANEL. COORDINATE EXACT LOCATION WITH EQUIPMENT INSTALLER.
- 4 NOT USED.
- 5 NOT USED
- 6 NOT USED.
- 7 PROVIDE UNDERGROUND ROUTED RIGID METAL CONDUIT FROM MEGA MIXER CONTROL PANEL TO MEGA MIXER LOCATION. COORDINATE REQUIREMENTS SUCH AS EXACT LOCATION OF CONDUIT STUB OUT, WIRE SIZE TO BE ROUTED IN THESE CONDUITS ETC WITH EQUIPMENT MANUFACTURER. CONDUIT SERVES MEGA MIXER PEDESTAL MOTOR.
- 8 PROVIDE UNDERGROUND ROUTED CONDUITS AND CABLES FROM MEGA MIXER PANEL LOCATION TO MEGA MIXER LOCATION. THIS CONDUITS POWERS MEGA MIXER GANTRY MOTOR. COORDINATE REQUIREMENTS WITH MANUFACTURER.
- 9 ROUTE 1" CONDUITS FROM MEGAMIXER LOCATION TO CONTROL PANEL.
- 10 DISCONNECT TO POWER ROBOTIC CRANE. COORDINATE POWER REQUIREMENTS WITH MANUFACTURER.
- 11 EMERGENCY POWER SHUT OFF LOCATION. PROVIDE RED MUSHROOM STYLE PUSH BUTTON. THIS BUTTON IS CONNECTED TO MAIN DISTRIBUTION SWITCHBOARD SHUNTTRIP BREAKER. PROVIDE CLEAR COVER AND LABEL "EMERGENCY POWER SHUT OFF LOCATION". PROVIDE ADDITIONAL PUSH BUTTONS AS REQUESTED BY OWNER.
- 12 480V, 30A, 3POLE, NON FUSED DISCONNECT POWERS VACUUM PUMP. COORDINATE EXACT LOCATION WITH INSTALLER.
- 13 SIZE DISCONNECT BASED ON EXISTING MIXER REQUIREMENTS. COORDINATE EXACT LOCATION WITH MIXER LOCATION. PROVIDE ALL POWER AND CONTROLS WIRING REQUIRED FOR FUNCTIONALITY.
- 14 OWNER PROVIDED EQUIPMENT. COORDINATE EXACT LOCATION WITH OWNER. COORDINATE AND PROVIDE POWER IN ACCORDANCE TO MANUFACTURERS REQUIREMENTS.
- 15 480V, 30A, 3POLE DISCONNECT POWERS BLAST DOOR. COORDINATE EXACT LOCATION WITH DOOR INSTALLER. PROVIDE CLASS 2 DIV 1 DISCONNECT WHERE AREAS ARE CLASSIFIED AS SUCH.
- 16 240V, 30A, 3POLE NON FUSED DISCONNECT POWERS DOCK LEVELER. UTILIZE TWO POLES OF THE DISCONNECT. LOCATE DISCONNECT NEAR DOCK LEVELER CONTROL, SAWCUT AND ROUTE CONDUIT IN EXISTING CONCRETE FROM DOCK CONTROLLER LOCATION TO LEVELER. ROUTE CONDUIT AND LOCATE WEATHER PROOF JUNCTION BOX PER MANUFACTURER REQUIREMENTS. PROVIDE ALL OTHER NECESSARY ACCESSORIES, CABLING ETC FOR FULL DOCK FUNCTIONALITY.
- 17 JUNCTION BOX POWERS PRODUCTION EQUIPMENT. COORDINATE EXACT LOCATION WITH INSTALLER.
- 18 PROVIDE NEMA 5-30R RECEPTACLE MOUNT RECEPTACLES ABOVE BUMP RAIL.
- 19 240V, 200A, 3POLE NF DISCONNECT POWERS PRODUCTION EQUIPMENT. UTILIZE TO POLES TO POWER EQUIPMENT. COORDINATE EXACT LOCATION WITH EQUIPMENT INSTALLER.
- 20 240V, 100A, 3POLE NF DISCONNECT POWERS PRODUCTION EQUIPMENT. COORDINATE EXACT LOCATION WITH INSTALLER.
- 21 480V, 60A, 3POLE NF DISCONNECT POWERS PRODUCTION EQUIPMENT. COORDINATE EXACT LOCATION WITH INSTALLER.
- 22 JUNCTION BOX POWERS DRAIN SOLENOID REFER TO PLUMBING SHEETS FOR FURTHER CLARIFICATION. COORDINATE WITH INSTALLER ON EXACT LOCATION. POWER FROM LP2-34.
- 23 JUNCTION BOX POWER SLIDING DOORS. COORDINATE WITH DOOR HARDWARE INSTALLER FOR EXACT POWER, PATHWAY, AND LOW VOLTAGE CABLE REQUIREMENTS. PROVIDE ALL REQUIREMENTS FOR FUNCTIONALITY.
- 24 JUNCTION BOX POWER DOOR ACTUATOR. COORDINATE WITH DOOR HARARE INSTALLER FOR EXACT POWER, PATHWAY, AND LOW VOLTAGE CABLE REQUIREMENTS. PROVIDE ALL REQUIREMENTS FOR FUNCTIONALITY. UTILIZE UL1-2.
- 25 DISCONNECT POWERS FORKLIFT CHARGER. COORDINATE EXACT LOCATION WITH OWNER.

1 POWER PLAN - AREA A - ROBERTO - BUILDING 400
 1/8" = 1'-0"
 SCALE: 1/8" = 1'-0"

Project
Anduril Industries - McHenry, MS
Rocket Motor Systems
Additions and Renovations to Buildings 300, 301, 302, 400, and 600 - McHenry, Mississippi

Design Phase
CONSTRUCTION DOCUMENTS

No.	Date	Description
1	11-14-2023	ADD 001
2	03-18-2024	RB 003
3	08-01-2024	RB 008
4	11-21-2024	RB 013

Stamp

Notes
 1. CROMWELL ARCHITECTS ENGINEERS, INC. ALL RIGHTS RESERVED
 2. THIS SHEET DESIGNED FOR COLOR PRINTING. CRITICAL INFORMATION MAY BE LOST WITH BLACK AND WHITE PRINTING.

Project Number **2023-047**
 Issue Date **10-26-2023**
 Sheet Title **POWER PLAN - AREA A - ROBERTO - BUILDING 400**
 Sheet Number

B400-EP101A