

Project

Anduril Industries - McHenry, MS
Rocket Motor Systems
Additions and Renovations to Buildings 300, 301,
302, 400, and 600 - McHenry, Mississippi

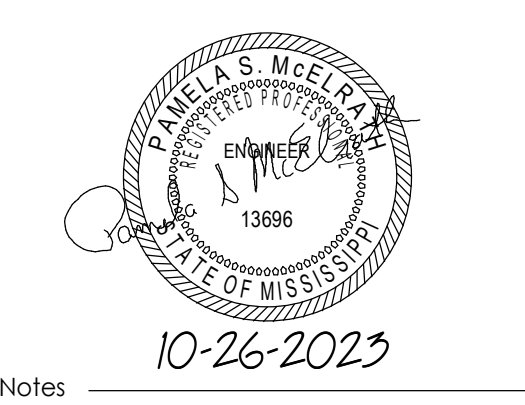
Design Phase

CONSTRUCTION DOCUMENTS

Revisions

No.	Date	Description
1	11-14-2023	ADD 001
2	01-24-2024	RB 001
3	03-18-2024	RB 003
4	08-01-2024	RB 008
5	10-07-2024	RB 011
6	11-21-2024	RB 013

Stamp



Notes

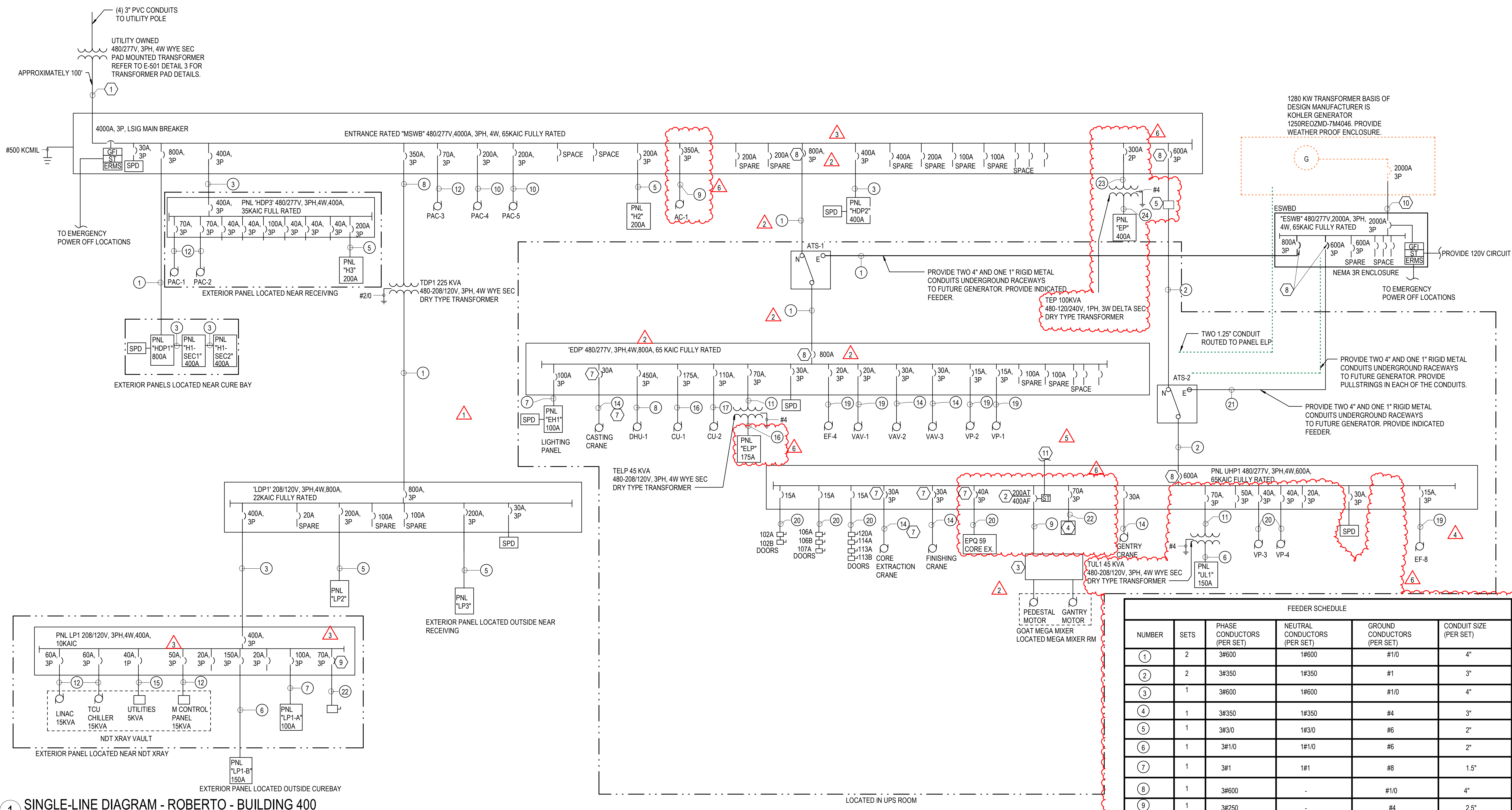
- CROWELL ARCHITECTS ENGINEERS, INC. ALL RIGHTS RESERVED
- THIS SHEET DESIGNED FOR COLOR PRINTING. CRITICAL INFORMATION MAY BE LOST WITH BLACK AND WHITE PRINTING.

Project Number: 2023-047
Issue Date: 10-26-2023
Sheet Title: ELECTRICAL SINGLE-LINE DIAGRAM - ROBERTO - BUILDING 400

ELECTRICAL SINGLE-LINE DIAGRAM - ROBERTO - BUILDING 400

Sheet Number

B400-E-601



1 SINGLE-LINE DIAGRAM - ROBERTO - BUILDING 400
N.T.S.

GENERAL NOTES:

- ALL EXTERIOR ELECTRICAL EQUIPMENT SHALL HAVE A NEMA 3R ENCLOSURE.
- SPD'S CABLE SIZES SHALL BE PER MANUFACTURER RECOMMENDATIONS.
- PROVIDE CONCRETE PADS FOR ALL GROUND MOUNTED ELECTRICAL EQUIPMENT.
- PROVIDE ARC FLASH LABELS ON MAIN SWITCHBOARD, ALL PANELBOARDS, ALL SAFETY SWITCHES AND TRANSFORMERS.

KEYED NOTES:

- PROVIDE 12 SETS OF 4" RIGID METAL CONDUITS. EACH OF THE 10 SETS OF CONDUIT CONTAIN 4-#600 KCMIL CONDUCTORS. 2 OF THE 12 CONDUITS ARE SPARE CONDUITS. REFER TO E-601 DETAIL 1.
- COORDINATE AND ADJUST BREAKER TRIP TO MATCH FINAL EQUIPMENT MANUFACTURER TRIP RATING.
- MEGA MIXER CONTROL PANEL. COORDINATE EXACT LOCATION WITH INSTALLER.
- CFCI CORE EXTRACTION CONTROL PANEL. COORDINATE EXACT LOCATION WITH OWNER.
- CFCI CONTACTOR THAT WILL DISCONNECT POWER IN AN EVENT OF POWER OUTAGE. THIS WILL CONTACTOR SHALL OPERATE RAPIDLY TO ENSURE UTILITY LINES ARE NOT ENERGIZED WHEN THE MEGA MIXER REGENERATES POWER.
- PROVIDE POWER FOR EXISTING MIXER. COORDINATE WITH OWNER ON EXACT POWER REQUIREMENTS. SIZE FEEDER AND BREAKER PER NFPA 70.
- COORDINATE AND PROVIDE EXACT POWER REQUIREMENTS WITH EQUIPMENT MANUFACTURER.
- PROVIDE 100% RATED BREAKER.
- PROVIDE BREAKER FOR FUTURE OWNER PROCURED EQUIPMENT.
- PROVIDE 5 SETS OF 4" PVC CONDUITS. EACH OF THE 4 CONDUITS CONTAIN 4-#600 KCMIL CONDUCTORS. 1 OF THE 5 CONDUITS IS A SPARE CONDUIT.

KEYED NOTES:

- INTERLOCK SHUNT TRIP WITH FIRE ALARM PANEL. PROVIDE POWER FOR SHUNT TRIP COIL FROM PANEL PNL UHP1.

SWITCHBOARD LEGEND

- ST - SHUNT TRIP BREAKER
- ERMS - ENERGY REDUCING MAINTENANCE SWITCH
- GFP - GROUND FAULT PROTECTION

LINE LEGEND

- FUTURE IN SCOPE
- NEW EQUIPMENT
- OWNER FURNISHED
- CONTRACTOR INSTALLED