

DOOR SCHEDULE - BUILDING 400 / ROBERTO

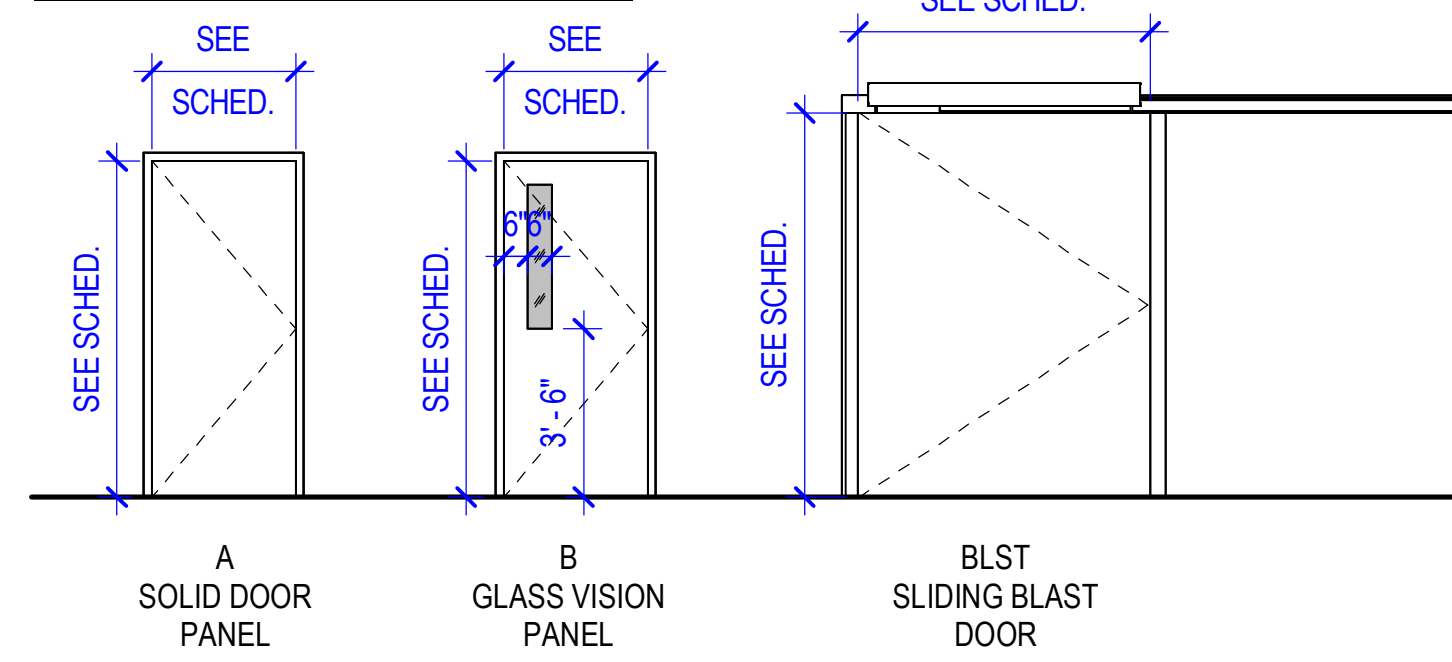
DOOR NO.	TYPE	DOOR			Louver	FRAME			DETAILS	FIRE RATING	HARDWARE	DOOR NO.	COMMENTS	
		W	HT	THK		FRAME TYPE	FRAME MATERIAL	FRAME FINISH						HEAD
B400-100A	OHC	12'-0"	12'-0"	1 3/4"	INS. STL.			OH			15.0	B400-100A	HIGH SPEED	
B400-100B	OHC	12'-0"	12'-0"	1 3/4"	INS. STL.			OH			15.0	B400-100B	HIGH SPEED	
B400-100C	OHC	12'-0"	12'-0"	1 3/4"	STL.			OH			15.0	B400-100C	HIGH SPEED	
B400-100D	B	3'-0"	7'-0"	1 3/4"	GHM			HM-1	HM	PAINT		12.0	B400-100D	
B400-100E	BB	8'-0"	7'-0"	1 3/4"	HM			HM-1	HM	PAINT		6.0	B400-100E	
B400-100F	A	3'-0"	7'-0"	1 3/4"	GHM			HM-1	GHM	PAINT		2.0	B400-100F	INSULATED FRAME AND DOOR
B400-101AA	B	3'-0"	7'-0"	1 3/4"	HM					PAINT		2.0	B400-101AA	
B400-101AB	A	3'-0"	7'-0"	1 3/4"	HM					PAINT		11.0	B400-101AB	
B400-102	A	3'-0"	7'-0"	1 3/4"	GHM			HM-1	GHM	PAINT		2.0	B400-102	INSULATED FRAME AND DOOR
B400-102A	BLST	5'-0"	8'-0"	TBD	STL							15.0	B400-102A	BLAST RATED DOOR - COORDINATE WITH SIZE OF EXISTING OPENING
B400-102B	BLST	5'-0"	8'-0"	TBD	STL							15.0	B400-102B	BLAST RATED DOOR - COORDINATE WITH SIZE OF EXISTING OPENING
B400-103	A	3'-0"	7'-0"	1 3/4"	GHM			HM-1	GHM	PAINT		2.0	B400-103	INSULATED FRAME AND DOOR
B400-103A		3'-0"	7'-0"	1 3/4"				HM-1	GHM	PAINT		2.0	B400-103A	CASED OPENING
B400-104	A	3'-0"	7'-0"	1 3/4"	GHM			HM-1	HM	PAINT		2.0	B400-104	INSULATED FRAME AND DOOR
B400-105A	CC	8'-0"	8'-0"	1 3/4"	HM			HM-1	HM	PAINT		6.0	B400-105A	INSULATED FRAME AND DOOR
B400-105A.1	CC	8'-0"	8'-0"	4"	PMF			PMF	FF	FF		3.0	B400-105A.1	MATCH WALL R-VALUE
B400-105B	BB	8'-0"	8'-0"	1 3/4"	HM			HM-1	HM	PAINT		6.0	B400-105B	INSULATED FRAME AND DOOR
B400-105B.1	BB	8'-0"	8'-0"	1 3/4"	HM			HM-1	HM	PAINT		6.0	B400-105B.1	INSULATED FRAME AND DOOR
B400-105B.2	BB	8'-0"	8'-0"	1 3/4"	HM			HM-1	HM	PAINT		6.0	B400-105B.2	INSULATED FRAME AND DOOR
B400-105C	CC	8'-0"	8'-0"	4"	PMF			PMF	FF	FF		3.0	B400-105C	MATCH WALL R-VALUE
B400-105C.1	BB	8'-0"	8'-0"	1 3/4"	HM			HM-1	HM	PAINT		6.0	B400-105C.1	INSULATED FRAME AND DOOR
B400-105C.2	CC	8'-0"	8'-0"	4"	PMF			PMF	FF	FF		3.0	B400-105C.2	MATCH WALL R-VALUE
B400-106A	BLST	4'-0"	8'-0"	TBD	STL							15.0	B400-106A	BLAST RATED DOOR - COORDINATE WITH SIZE OF EXISTING OPENING
B400-106B	BLST	4'-0"	8'-0"	TBD	STL							15.0	B400-106B	BLAST RATED DOOR - COORDINATE WITH SIZE OF EXISTING OPENING
B400-106C	A	3'-0"	7'-0"	1 3/4"	GHM			HM-1	GHM	PAINT		2.0	B400-106C	INSULATED FRAME AND DOOR
B400-106D	A	3'-0"	7'-0"	1 3/4"	GHM			HM-1	GHM	PAINT		2.0	B400-106D	INSULATED FRAME AND DOOR
B400-107A	BLST	6'-0"	8'-0"	TBD	STL							15.0	B400-107A	BLAST RATED DOOR
B400-107B	A	3'-0"	7'-0"	1 3/4"	GHM							2.0	B400-107B	BLAST RATED DOOR
B400-108A	A	3'-0"	7'-0"	1 3/4"	GHM			HM-1	GHM	PAINT		2.0	B400-108A	INSULATED FRAME AND DOOR
B400-108B	AA	3'-0"	7'-0"	1 3/4"	GHM			HM-1	GHM	PAINT		2.0	B400-108B	INSULATED FRAME AND DOOR
B400-109	AA	6'-0"	7'-0"	1 3/4"	GHM			HM-1	GHM	PAINT		1.0	B400-109	INSULATED FRAME AND DOOR/CARD ACCESS
B400-110	AA	6'-0"	7'-0"	1 3/4"	GHM			HM-1	GHM	PAINT		3.0	B400-110	INSULATED FRAME AND DOOR/CARD ACCESS
B400-111	A	3'-0"	7'-0"	1 3/4"	GHM			HM-1	GHM	PAINT		2.0	B400-111	INSULATED FRAME AND DOOR/CARD ACCESS
B400-112	A	3'-0"	7'-0"	1 3/4"	HM			HM-1		PAINT		14.0	B400-112	
B400-113A	BLST	12'-0"	14'-0"	TBD	STL							15.0	B400-113A	BLAST RATED DOOR
B400-113B	BLST	8'-0"	8'-0"	TBD	STL							15.0	B400-113B	BLAST RATED DOOR
B400-113C	A	3'-0"	7'-0"	1 3/4"	GHM							2.0	B400-113C	BLAST RATED DOOR
B400-114A	BLST	12'-0"	14'-0"	TBD	STL							15.0	B400-114A	BLAST RATED DOOR
B400-114B	A	3'-0"	7'-0"	1 3/4"	GHM							2.0	B400-114B	BLAST RATED DOOR
B400-115	BLST	6'-0"	7'-0"	TBD	STL/LL							15.0	B400-115	BLAST RATED DOOR - LEAD LINED
B400-116	A	3'-0"	7'-0"	1 3/4"	HM			HM-1		PAINT		10.0	B400-116	
B400-116A	A	3'-0"	7'-0"	1 3/4"	HM			HM-1		PAINT		10.0	B400-116A	
B400-117	A	3'-0"	7'-0"	1 3/4"	GHM							2.0	B400-117	INSULATED FRAME AND DOOR/CARD ACCESS
B400-118	BB	6'-0"	7'-0"	1 3/4"	HM			HM-1	HM	PAINT		5.0	B400-118	
B400-119	A	3'-0"	7'-0"	1 3/4"	HM			HM-1	HM	PAINT		13.0	B400-119	
B400-120A	BLST	8'-0"	14'-0"	TBD	STL							15.0	B400-120A	BLAST RATED DOOR
B400-120B	OHC	8'-0"	14'-0"		STL.			OH				15.0	B400-120B	HIGH SPEED
B400-121A	A	3'-0"	7'-0"	1 3/4"	GHM			HM-1	GHM	PAINT		2.0	B400-121A	INSULATED FRAME AND DOOR
B400-121B	A	3'-0"	7'-0"	1 3/4"	GHM			HM-1	GHM	PAINT		2.0	B400-121B	INSULATED FRAME AND DOOR
B400-121C	A	3'-0"	7'-0"	1 3/4"	GHM			HM-1	GHM	PAINT		2.0	B400-121C	INSULATED FRAME AND DOOR
B400-121D	A	3'-0"	7'-0"	1 3/4"	GHM			HM-1	GHM	PAINT		2.0	B400-121D	INSULATED FRAME AND DOOR
B400-122	A	3'-0"	7'-0"	1 3/4"	GHM			HM-1	GHM	PAINT		2.0	B400-122	INSULATED FRAME AND DOOR/CARD ACCESS
B400-123	AA	6'-0"	7'-0"	1 3/4"	GHM			HM-1	GHM	PAINT		3.0	B400-123	INSULATED FRAME AND DOOR/CARD ACCESS

MATERIALS		PMF	PRE-MANUFACTURED
CT	CLEAR TEMPERED GLASS		
GHM	GALVANIZED HOLLOW METAL		
HM	HOLLOW METAL		
IHM	INSULATED HOLLOW METAL		
SCW	SOLID CORE WOOD		
ST	STEEL		
W	WOOD		
BLST	BLAST		
LL	LEAD LINED		
MATERIALS		FF	FACTORY FINISHED
S	STAIN		
P	PAINT		
CA	CLEAR ANODIZED		

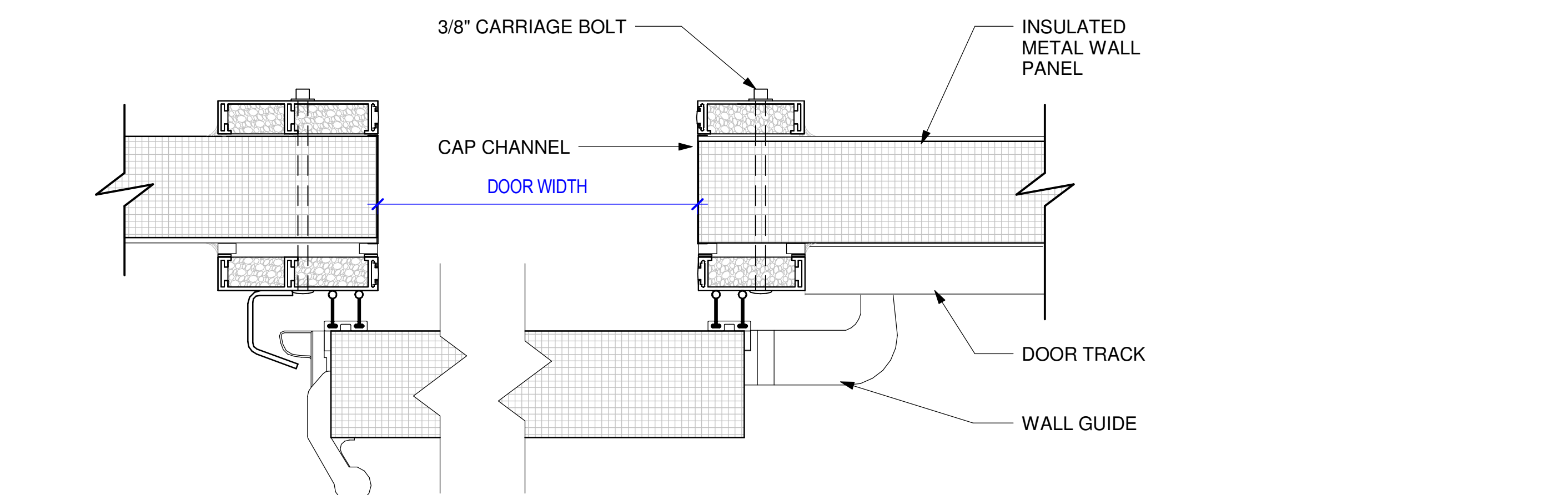
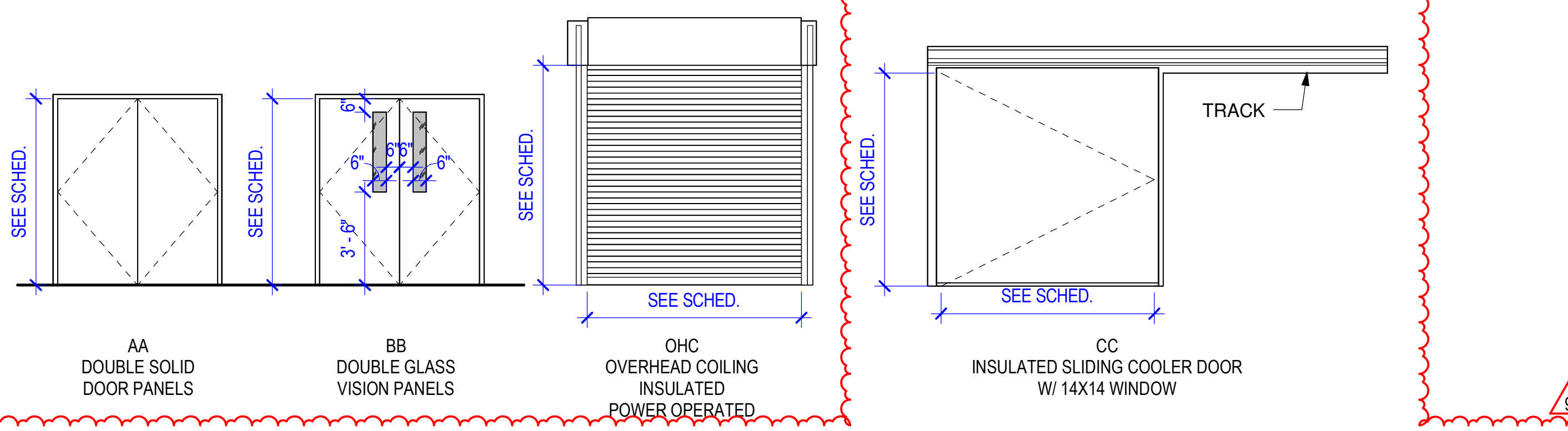
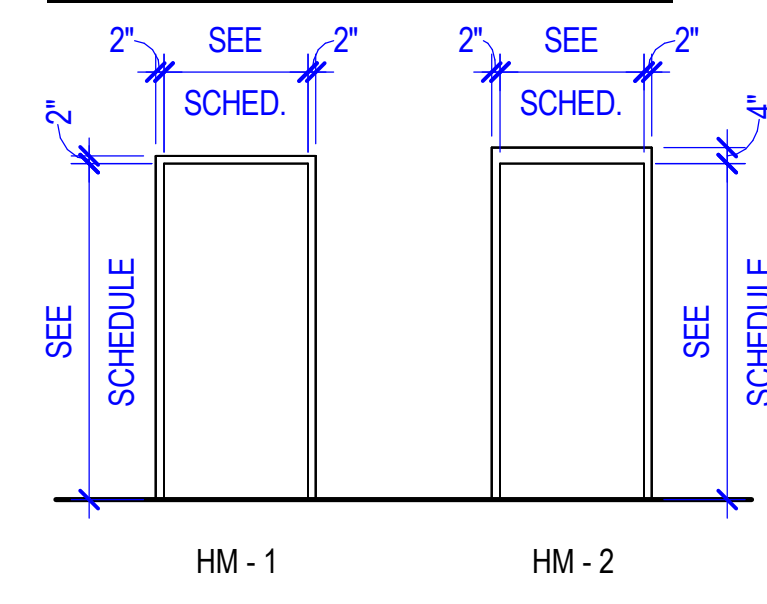
ROOM FINISH SCHEDULE

ROOM NUMBER	ROOM NAME	FLOOR	BASE	NORTH WALL		SOUTH WALL		EAST WALL		WEST WALL		CEILING		ROOM NUMBER	REMARKS
				MATERIAL	COLOR	MATERIAL	COLOR	MATERIAL	COLOR	MATERIAL	COLOR	MATERIAL	COLOR		
B400-100	RECEIVING	CF	---	E-MWP	---	IMP	---	GWB	EPT-1	EXIST	---	---	B400-100		
B400-100A	VEST.	CF	RB-1	EXIST	EPT-1	EXIST	---	EXIST	EPT-1	EXIST	E-EXP	---	B400-100A		
B400-101	MISC.	CF	---	E-CONC-1	---	E-CONC-1	EPT-1	E-CONC-1	EPT-1	E-CONC-1	---	E-EXP	---	B400-101	
B400-102	IGNITER	CF	---	E-CONC-1	EPT-1	E-CONC-1	EPT-1	E-MWP	---	E-CONC-1	EPT-1	E-CONC-1	EPT-2	B400-102	
B400-103	RESERVED	CF	---	E-CONC-1	EPT-1	E-CONC-1	EPT-1	E-MWP	---	E-CONC-1	EPT-1	E-CONC-1	EPT-2	B400-103	
B400-104	CIRCULATION	CF	---	E-MWP/E-CONC-1	---/EPT-1	E-MWP/GWB	---/EPT-1	E-MWP/E-CONC-1	---/EPT-1	IMP/GWB	---/EPT-1	E-EXP	---	B400-104	
B400-105	CHEMICAL MIXING	CF	---	IMP	---	IMP	---	IMP	---	IMP/E-MWP/MWP	---	IMP	---	B400-105	
B400-105A	OXIDIZERS AND CURATIVES	CF	---	IMP	---	IMP	---	IMP	---	IMP/E-MWP/MWP	---	IMP	---	B400-105A	
B400-105B	FUELS	CF	---	IMP	---	IMP	---	IMP	---	IMP/E-MWP/MWP	---	IMP	---	B400-105B	
B400-105C	CORRIDOR	CF	---	IMP	---	IMP	---	IMP	---	IMP/E-MWP/MWP	---	IMP	---	B400-105C	
B400-106	HOLDING	CF	RB-1	E-CONC-1	EPT-1	E-CONC-1	EPT-1	E-CONC-1	EPT-1	E-CONC-1	EPT-1	E-CONC-1	EPT-2	B400-106	
B400-107	MEGA MIXER	CF	---	CONC-1	EPT-1	MWP	---	CONC-1	EPT-1	CONC-1	EPT-1	GWB	EPT-2	B400-107	
B400-108	FINISHING	CF	---	MWP/GWB	---/EPT-1	MWP/GWB	---/EPT-1	MWP/GWB	---/EPT-1	MWP/GWB	---/EPT-1	IMP	---	B400-108	
B400-109	ELECTRICAL	CF	RB-1	MWP	---	GWB	EPT-1	MWP	---	GWB	EPT-1	IMP	---	B400-109	
B400-110	UPS	CF	RB-1	GWB	EPT-1	GWB	EPT-1	E-MWP	---	GWB	EPT-1	IMP	---	B400-110	
B400-111	COMM. / IT	CF	RB-1	GWB	EPT-1	GWB	EPT-1	E-MWP	---	GWB	EPT-1	IMP	---	B400-111	
B400-112	TLT.	CF	RB-1	MRGWB	EPT-1	MRGWB	EPT-1	GWB	EPT-1	GWB	EPT-1	IMP	---	B400-112	
B400-113	CASTING	CF	---	CONC-1	EPT-1	MWP	---	CONC-1	EPT-1	CONC-1	EPT-1	EXP	---	B400-113	
B400-114	CORE EXTRACTION	CF	---	CONC-1	EPT-1	MWP	---	CONC-1	EPT-1	CONC-1	EPT-1	EXP	---	B400-114	
B400-115	NDT AREA	CF	---	CONC-1	EPT-1	CONC-1	EPT-1	CONC-1	EPT-1	CONC-1	EPT-1	EXP/CONC-1	---/EPT-2	B400-115	
B400-116	CONTROL	CF	RB-1	GWB	EPT-1	CONC-1	EPT-1	ALG/GWB	---/EPT-1	GWB	EPT-1	ACT	ACT-1	B400-116	
B400-116A	READING	CF	---	---	CONC-1	---	---	---	---	---	---	---	---	B400-116A	
B400-117	UTILITY	CF	---	---	CONC-1	---	---	---	---	---	---	---	---	B400-117	
B400-118	JANITOR	CF	RB-1	MRGWB	EPT-1	MRGWB	EPT-1	MRGWB	EPT-1	MRGWB	EPT-1	IMP	---	B400-118	
B400-119	TLT.	CF	RB-1	MRGWB	EPT-1	MRGWB	EPT-1	MRGWB	EPT-1	MRGWB	EPT-1	GWB	EPT-2	B400-119	
B400-120	CORRIDOR	CF	RB-1	CONC-1	EPT-1	CONC-1	EPT-1	MWP	---	MWP	---	IMP	---	B400-120	
B400-121	CURE BAY	CF	---	MWP	---	MWP	---	MWP	---	MWP	---	IMP	---	B400-121	
B400-122	IT CLOSET	CF	---	MRGWB	EPT-1	MRGWB	EPT-1	MRGWB	EPT-1	MRGWB	EPT-1	ACT	ACT-1	B400-122	
B400-123	COMPRESSOR	CF	---	---	---	---	---	---	---	---	---	---	---	B400-123	

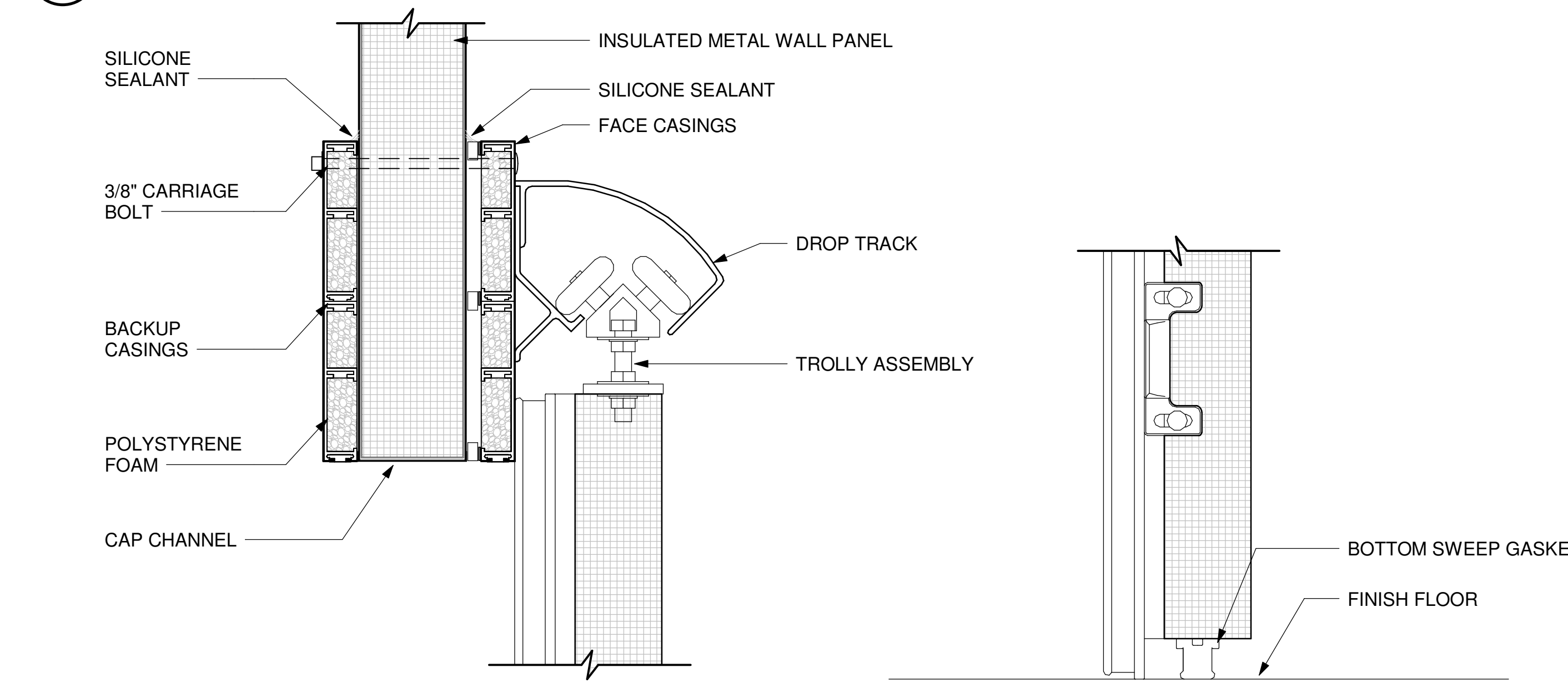
DOOR TYPES LEGEND



FRAME TYPES LEGEND



1 COOLER DOOR JAMB  
3" = 1'-0"



2 COOLER DOOR HEAD  
3" = 1'-0"

3 COOLER DOOR SILL  
3" = 1'-0"

MATERIAL LEGEND	
---	"NO" OR "NONE"
ACT	ACOUSTICAL CEILING TILE
CF	CONCRETE FINISH
CG	CORNER GUARD
CONC-1	CONCRETE - PAINTED
EPT	EPOXY PAINT
EXP	EXPOSED STRUCTURE
E-	EXISTING MATERIAL
FRP	FIBERGLASS REINFORCED PANEL
GWB	GYPSSUM WALL BOARD
IMP	INSULATED METAL PANEL
MWP	METAL WALL PANEL
MRGWB	MOISTURE RESISTANT GYPSSUM WALL BOARD
RB	RESILIENT BASE

FINISHES LEGEND

FLOORS	
CF	RESTORETE POLISHED CONCRETE SYSTEM
BASE	
RB-1	JOHNSONITE/TARKETT, 4"TH BASEWORKS THERMOSET RUBBER WALL BASE, COLOR: 20 CHARCOAL
WALLS	
EPT-1	BENJAMIN MOORE, DECORATOR'S WHITE OC-149 EPOXY PAINT WITH SATINEG-SHEL FINISH
FRP-1	CRANE COMPOSITES, GLASBORO CLASS A, 4' X 8' PANEL SIZE, COLOR: WHITE WITH EMBOSSED FINISH
IMP	FACTORY FINISHED. SELECT COLOR FROM STANDARD FINISH OPTIONS.
MWP	FACTORY FINISHED. SELECT COLOR FROM STANDARD FINISH OPTIONS.
CEILINGS	
ACT-1	ARMSTRONG, DUNE 1774 24"X24"X5/8" ANGLED TEGULAR, WITH 15/16" PRELUDE XL GRID
EPT-2	SHERWIN WILLIAMS, SW7007 BRIGHT CEILING WHITE, EPOXY PAINT WITH SATINEG-SHEL FINISH