

Project

Anduril Industries - McHenry, MS  
 Rocket Motor Systems  
 Additions and Renovations to Buildings 300, 301,  
 302, 400, and 600 - McHenry, Mississippi

Design Phase

**CONSTRUCTION DOCUMENTS**

Revisions

No.	Date	Description
1	11-14-2023	ADD 001
2	11-21-2024	RB 013

Stamp



Notes

1. CROMWELL ARCHITECTS ENGINEERS, INC. ALL RIGHTS RESERVED
2. THIS SHEET DESIGNED FOR COLOR PRINTING. CRITICAL INFORMATION MAY BE LOST WITH BLACK AND WHITE PRINTING.

Project Number 2023-047

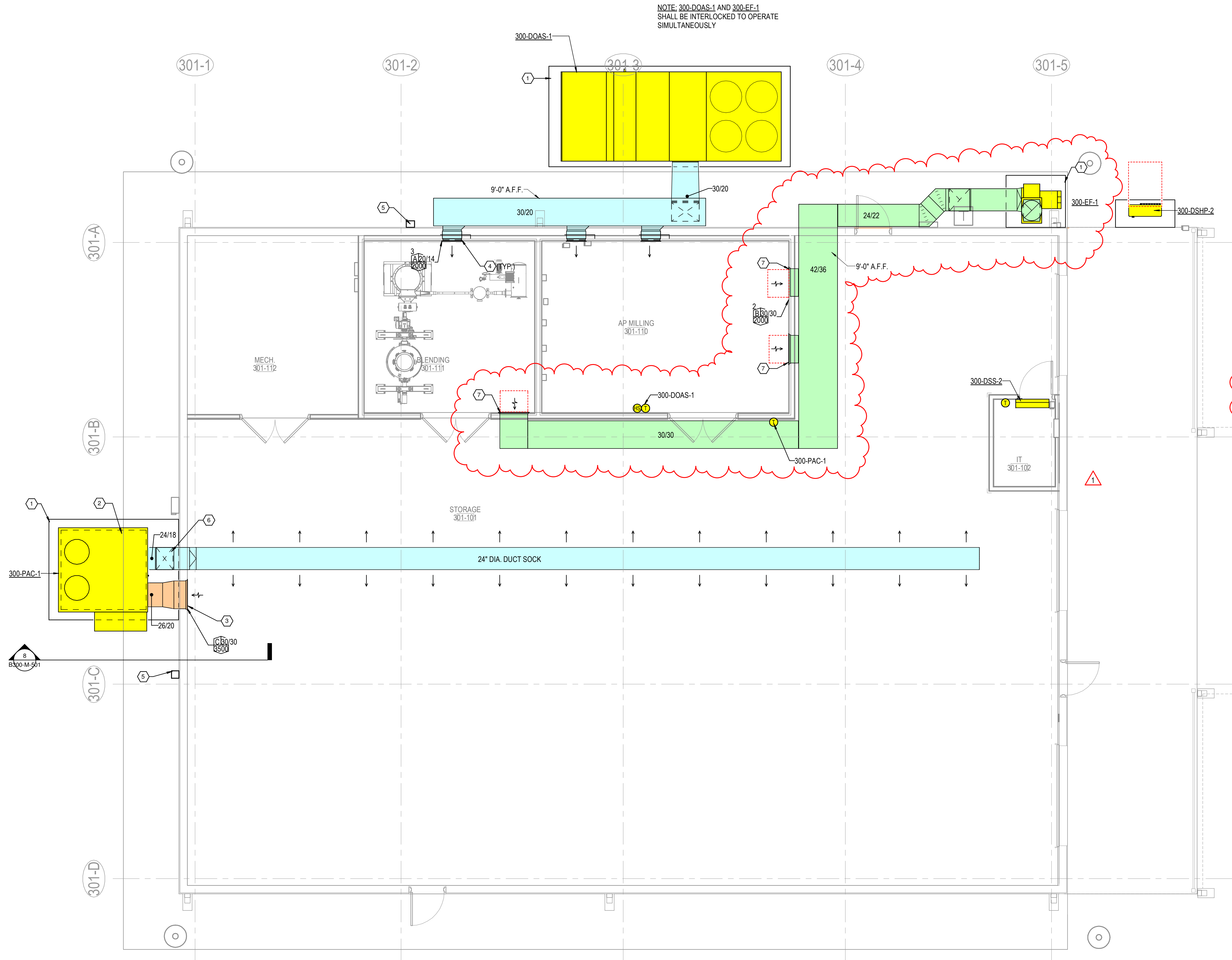
Issue Date 10-26-2023

Sheet Title

**MECHANICAL PLAN - CHAN BUILDING 301**

Sheet Number

**B300-M-101**



NOTE: 300-DOAS-1 AND 300-EF-1 SHALL BE INTERLOCKED TO OPERATE SIMULTANEOUSLY

**GENERAL NOTES**

1 REFER TO SHEET M-001 FOR MECHANICAL NOTES, ABBREVIATIONS, AND LEGEND SYMBOLS.

**KEYED NOTES**

- 1 PROVIDE 6" CONCRETE MECHANICAL PAD.
- 2 UNIT PROVIDED WITH MANUFACTURER'S PLENUM CURB. ROUTE DUCTWORK HORIZONTALLY FROM CURB. ROUTE RETURN DUCT TO EXTERIOR WALL AND PENETRATE TO BUILDING INTERIOR AT APPROXIMATELY 1' 6" A.F.F.
- 3 INSTALL RETURN AIR DEVICE AT APPROXIMATELY 1'-6" A.F.F.
- 4 PENETRATE WALL AND INSTALL AIR DEVICES APPROXIMATELY 90" A.F.F.
- 5 INSTALL NEW FREEZE PROOF WALL HYDRANT AT APPROXIMATELY THIS LOCATION. BASIS OF DESIGN: WOODFORD 67, ENCLOSED BOX, INCLUDES DOUBLE CHECK BACKFLOW PREVENTER, AND DRAIN PORT UNDER NOZZLE. TAP FROM EXISTING WATER SUPPLY TO PROVIDE 3/4" CW LINE TO HYDRANT. PROVIDE FULL PORT ISOLATION BALL VALVE PRIOR TO FIXTURE. INSTALL -16" ABOVE FINISHED FLOOR.
- 6 RISE WITH DUCT ALONG THE WALL, PENETRATE WALL TO BUILDING INTERIOR AT APPROXIMATELY 13' 6" A.F.F. THEN IMMEDIATELY TRANSITION TO 24" DIA ROUND FABRIC DUCT
- 7 INSTALL 1x1, 30"x30", 1-FILTER UNIT, WALL MOUNTED HEPA FILTER HOUSING EQUAL TO "CAMFIL PHARMASEAL PN-302302-15L-OB-E-SK-S-F-2011" WITH CAMFIL FILTRA 2000 HEPA FILTER FOR 99.99% FILTRATION. FILTER TO HAVE ROOM SIDE FILTER SERVICABILITY.

**FABRIC DUCT SYSTEM:**  
 THE FABRIC DUCT SYSTEM SHALL BE EQUAL TO DUCT SOX IHS WITH TRACK SUSPENSION SYSTEM AND VERONA DURATEX FABRIC WITH LINEAR VENTS AT 5:00 AND 8:00 POSITIONS. THE FABRIC DUCT, FITTINGS, AND SUSPENSION SYSTEM SHALL BE COMPONENTS OF AN ENGINEERED SYSTEM BY A SINGLE FABRIC DUCT SYSTEM MANUFACTURER. FABRIC SHALL BE FIRE RETARDANT POLYESTER, 6.80Z/SQ.YD, 2 CFM/S.F. POROSITY @ 0.5"WG, NFPA-90A COMPLIANT, AND UL 2518 COMPLIANT. FABRIC COLOR TO BE SUBMITTED TO THE ARCHITECT.

**300-DSS-1/DSHP-1:**  
 INSTALL DUCTLESS SPLIT SYSTEM HIGH ON WALL IN CONTROL ROOM. FINAL LOCATION UNKNOWN.

1 MECHANICAL PLAN - CHAN BUILDING 301

1/4" = 1'-0"

