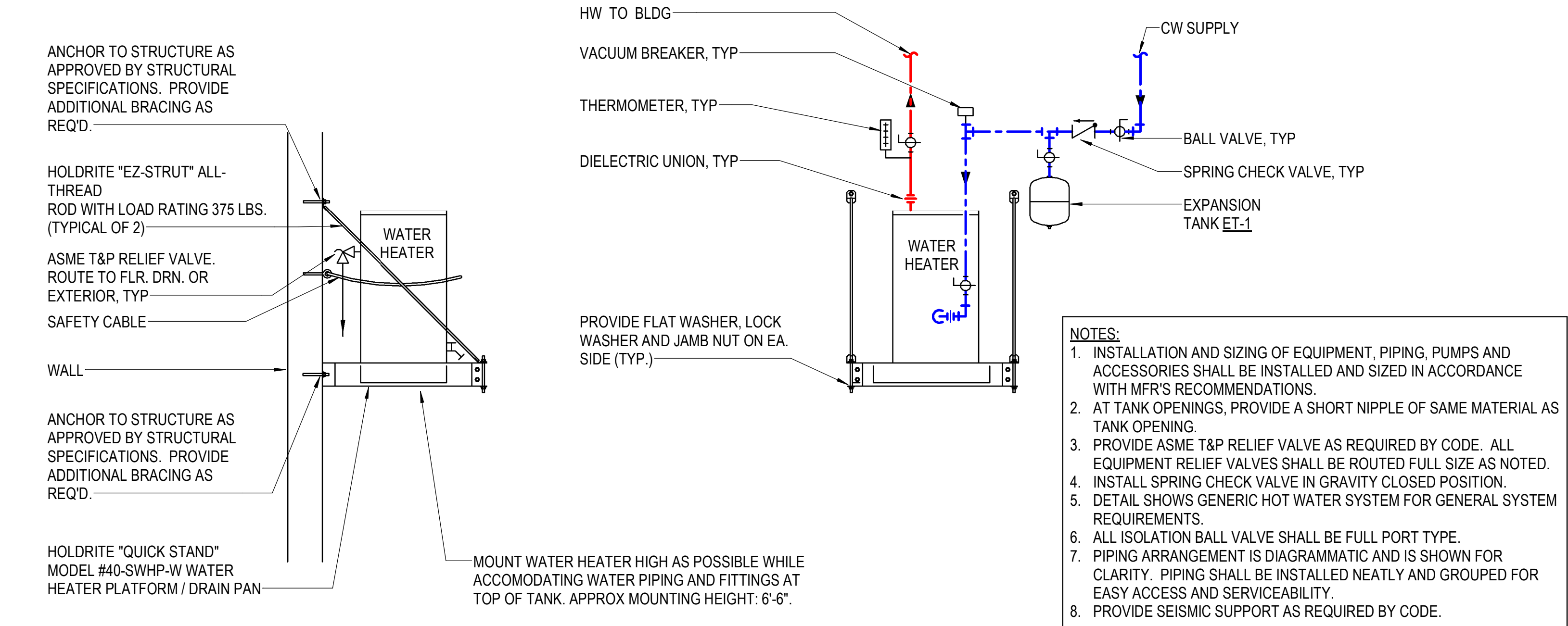


PLUMBING FIXTURE											
ID	BASIS OF DESIGN		COLD	HOT	WASTE	INDIRECT	VENT	TRAP	SPECIFICATION		
	MANUFACTURER & MODEL	ACCESSORIES									
WC-1	AMERICAN STANDARD #211AA.104 "CHAMPION PRO",	MCGUIRE SUPPLY STOP VALVES #LFBV2, AMERICAN STANDARD SEAT #5901.110	1"	---	4"	---	2"	INTEGRAL	WATER CLOSET - ADA COMPLIANT, 30-1/4"x19"x30-7/8"H, 1.28 GPF, FLOOR MOUNTED TANK TYPE, VITREOUS CHINA, PISTON-ACTION FLUSH VALVE, ANTI-BACTERIA INHIBITORS, ELONGATED BOWL, SEAT - OPEN FRONT SEAT, SELF SUSTAINING, LESS COVER		
WC-2	AMERICAN STANDARD #211CA.104 "CHAMPION PRO",	MCGUIRE SUPPLY STOP VALVES #LFBV2, AMERICAN STANDARD SEAT #5901.110	1"	---	4"	---	2"	INTEGRAL	WATER CLOSET - 30-1/4"x19"x29-3/8"H, 1.28 GPF, FLOOR MOUNTED TANK TYPE, VITREOUS CHINA, PISTON-ACTION FLUSH VALVE, ANTI-BACTERIA INHIBITORS, ELONGATED BOWL, SEAT - OPEN FRONT SEAT, SELF SUSTAINING, LESS COVER		
UR-1	AMERICAN STANDARD #6590.001 "WASHBROOK", SLOAN #180-1.0 "ROYAL"	MCGUIRE SUPPLY STOP VALVES #LFBV2, WADE CARRIER #402 SERIES (SINGLE OR DOUBLE AS REQUIRED)	3/4"	---	2"	---	2"	INTEGRAL	URINAL - STANDARD HIEGHT, WALL MOUNTED, VITREOUS CHINA, 3/4" EXPOSED TOP SPUD,WASHOUT ACTION, INTEGRAL TRAP, FLUSH VALVE - 0.5 GPF, MASHAERATOR SELF-CLEANING BYPASS DIAPHRAGM, EXTERNALLY ADJUSTABLE FLOW RATE, REMOVABLE AND REPLACEABLE SEAT		
LV-1	AMERICAN STANDARD #0355.012 "LUCERNE", CHICAGO FAUCET #420-T45E2805ABCP	MCGUIRE OFFSET P-TRAP KIT PW2150, MCGUIRE SUPPLY STOP VALVES #LFBV2-02, WADE CARRIER #530 SERIES (SINGLE OR DOUBLE AS REQUIRED)	1/2"	1/2"	2"	---	2"	1-1/4"	LAVATORY - ADA COMPLIANT, 18-1/4"x20-1/2"x38"H, WALL HUNG, WHITE VITREOUS CHINA, FRONT OVERFLOW, TWO FAUCET HOLES ON 4" CENTERS, FAUCET - 0.5 GPM, MANUAL, SINGLE LEVER, LEAD FREE, 4" SPOUT, DUAL HOT/COLD SUPPLY ON 4" CENTERS, INTEGRAL THERMOSTATIC MIXING ABOVE DECK, CARRIER - CONCEALED ARM WALL CARRIER		
SK-1	JUST MFG #DLX2237A-J, CHICAGO FAUCET #434-FC1ABCP	MCGUIRE BASKET STRAINER #151SAN, MCGUIRE P-TRAP #8912, MCGUIRE SUPPLY STOP VALVES #LFBV2-04, PROVIDE SUPPLY STOP VALVES FOR ALL ADJACENT PLUMBING ACCESSORIES	1/2"	1/2"	2"	---	2"	1-1/2"	SINK - 37"x22"x10-1/8"D, 2 COMPARTMENT (16"x16"x10"D), COUNTER-TOP, SELF RIMMING, 18 GAUGE TYPE 304 STAINLESS STEEL, CENTER DRAIN OUTLETS, SINGLE FAUCET HOLE, BOTTOM AND SIDE SOUND DEADENING. FAUCET - 1.0 GPM, CHROME PLATED LEAD FREE, 8-1/4" SWING SPOUT WITH DUAL-PATTERN PULL DOWN OUTLET, DECK MTD, SINGLE LEVER HANDLE, CONCEALED DUAL HOT/COLD SUPPLY, SINGLE HOLE		
JS-1	STERN WILLIAMS #MTB-2424, T&S BRASS #B-0658	STERN-WILLIAMS #T-35 RUBBER HOSE AND HANGER, STERN-WILLIAMS #T-40 MOP HANGER, (2) STERN-WILLIAMS #BP SPLASH PANELS	3/4"	3/4"	3"	---	2"	3"	MOP SINK - 24" x 24" x 10", FLOOR MTD, PRECAST TERAZZO, STAINLESS STEEL CAPS, FAUCET - CHROME PLATED LEAD FREE, VACUUM BREAKER, PAIL HOOK, 6" WRIST BLADE CONTROLS, 3/4" HOSE THREADED OUTLET, COMPRESSION CARTRIDGES WITH SPRING CHECK VALVES, UPPER SUPPORT ROD		
FPWH-1	WOODFORD #67,	PROVIDE FULL PORT ISOLATION BALL VALVE FOR FIXTURE	3/4"	---	---	---	---	---	FREEZEPROOF WALL HYDRANT - SIZE FOR WALL THICKNESS-4", RED BRASS VALVE BODY, 3/8" SOLID BRASS OPERATING ROD, HARDENED STAINLESS STEEL STEM, ONE PIECE VALVE PLUNGER, COPPER CASTING TUBES, DRAIN PORT UNDER NOZZLE, 3/4" HOSE CONNECTION W/ HIGH FLOW DOUBLE CHECK BACKFLOW PREVENTER, ADJUSTABLE WALL CLAMP		
FD-1	MIFAB #F1100-6-1-MG,	(-MG) MIFAB "MI-GARD" TRAP SEAL DEVICE	---	---	SEE PLAN	---	2"	SEE PLAN	FLOOR DRAIN - 6"DIA STRAINER, LACQUERED CAST IRON W/ ANCHOR FLANGE, OPTIONAL CLAMPING COLLAR FOR MEMBRANE FLOORS, SEEPAGE OPENINGS, 6"DIA SATIN NICKEL BRONZE FINISHED STRAINER, VANDAL RESISTANT STAINLESS STEEL ALLEN KEY SCREWS		
FS-1	MIFAB #FS1520-FL-150-MG,	(-MG) MIFAB "MI-GARD" TRAP SEAL DEVICE	---	---	SEE PLAN	---	2"	SEE PLAN	FLOOR SINK - 8"x8"x6"D, ACID RESISTANT ENAMEL COATING ON DRAIN AND GRATE, (-150) LOOSE SET 1/2 GRATE, ANCHOR FLANGE, OPTIONAL CLAMPING COLLAR FOR MEMBRANE FLOORS, SEEPAGE OPENINGS, ANTI-SPLASH ALUMINUM DOME BOTTOM STRAINER		

PLUMBING ACCESSORY			
ID	BASIS OF DESIGN		SPECIFICATION
	MANUFACTURER & MODEL	UTILITY CONNECTION	
ET-1	AMTROL #ST-5-C "THERM-X-TROL"	3/4" CW	EXPANSION TANK - 2 GAL TOTAL CAPACITY, 150 PSI WORKING PRESSURE, 8"DIA x 14" H, 3/4" NPT THREADED CONNECTION, 10 LBS, PROVIDE FULL PORT ISOLATION BALL VALVE AT CONNECTION TO CW
WCO	WADE #8304-COF SERIES	SAME SIZE AS LINE, MAX 4"	WALL CLEANOUT - SAME SIZE AS LINE, MAX 4", CAST IRON FERRULE W/ ABS PLUG, ROUND STAINLESS STEEL SECURE ACCESS COVER, COUNTERSUNK CENTER SCREW
WCO	WADE #8304-COF SERIES	SAME SIZE AS LINE, MAX 4"	WALL CLEANOUT - SAME SIZE AS LINE, MAX 4", CAST IRON FERRULE W/ ABS PLUG, ROUND STAINLESS STEEL SECURE ACCESS COVER, COUNTERSUNK CENTER SCREW
DCOTG	WADE #6000-12 SERIES	SAME SIZE AS LINE, MAX 4"	CLEANOUT-TO-GRADE/DOUBLE-CLEANOUT-TO-GRADE - SAME SIZE AS LINE, MAX. 4 INCH, HEAVY DUTY CAST IRON, FERRULE, THREADED ADJUSTABLE HOUSING, INTEGRAL CLAMPING COLLAR, ABS PLUG, 7-1/8 INCH SQUARE HEAVY DUTY DUCTILE IRON TOP

PLUMBING EQUIPMENT								
ID	BASIS OF DESIGN	ELECTRICAL						SPECIFICATION
	MANUFACTURER & MODEL	UTILITY CONNECTIONS	CONNECTION TYPE	VOLTAGE	PHASE	POWER	AMPS	
EWH-1	RHEEM #EGSP10	3/4"CW, 3/4"HW TANK DRAIN	HARDWIRED WITH GFCI PROTECTION	208 V	1	2.5 kW	12 FLA	ELECTRIC WATER HEATER - 10 GAL, 10 GPH @ 100°F RISE, 16"DIA 23"H, TANK TYPE, HIGH-TEMP PORCELAIN ENAMEL TANK LINING, MAGNESIUM ANODE ROD RIGIDLY SUPPORTED, 150 PSI WORKING PRESSURE RATING, COPPER RESISTORED SCREW-IN ELEMENTS, INSULTED WITH RIGID POLYURETHANE FOAM, SURFACE MOUNTED THERMOSTATS WITH INTEGRAL MANUAL RESET, HIGH LIMIT CONTROL, CSA/ASME RATED T&P RELIEVE VALVE, UL SEAL OF CERTIFICATION, COMPLETELY FACTORY ASSEMBLED

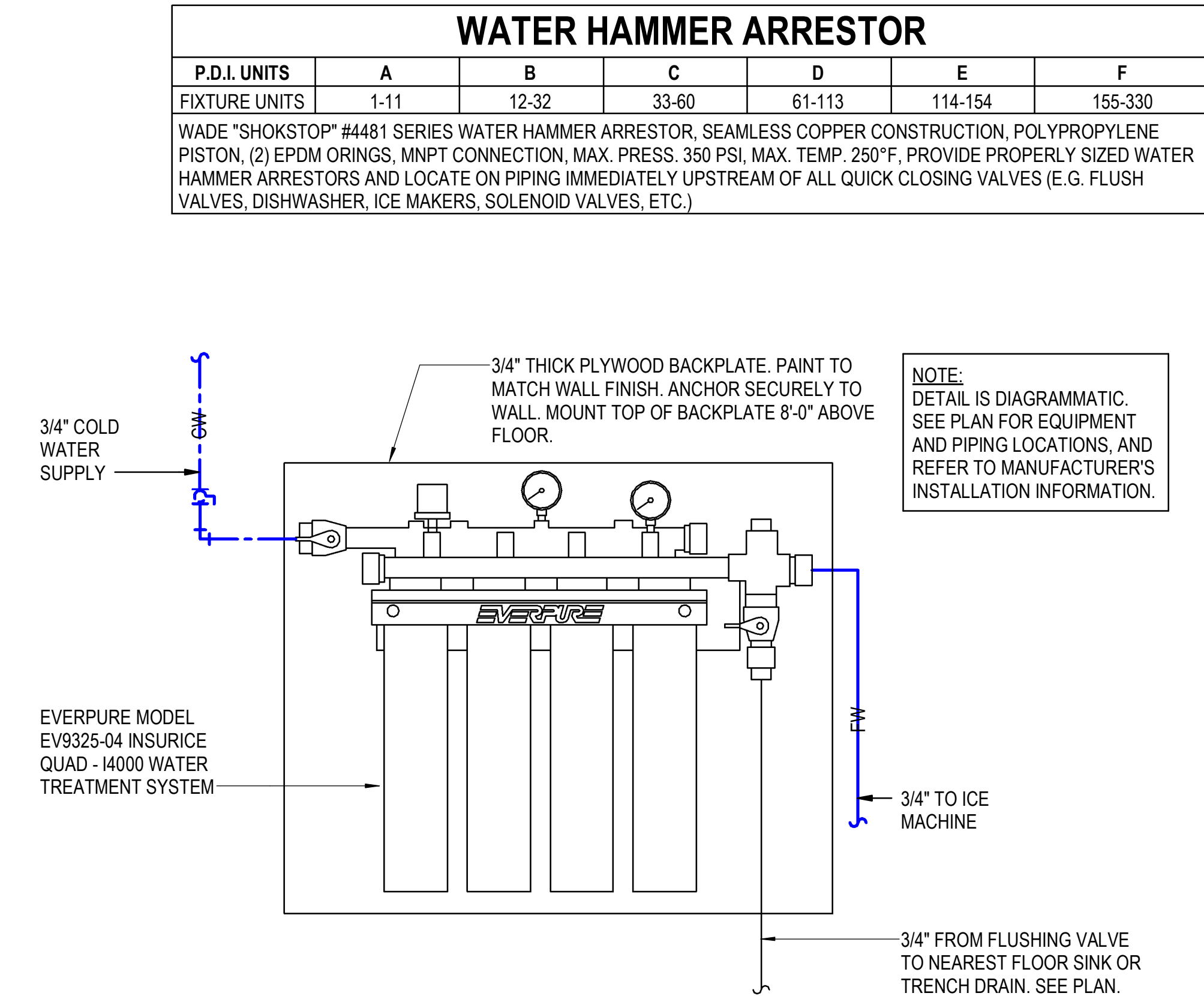


1 WATER HEATER INSTALLATION - EWH-1

NOT TO SCALE

2 ICE MAKER WATER TREATMENT SYSTEM

NOT TO SCALE



Project

AEROJET BUILDING E33
OFFICE EXPANSION
EAST CAMDEN,
ARKANSAS

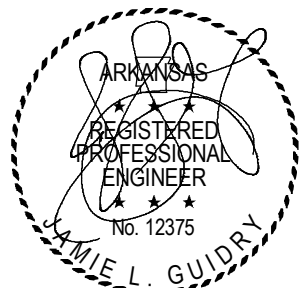
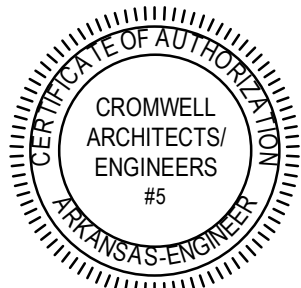
Design Phase

CONSTRUCTION DOCUMENTS

Revisions

No.	Date	Description

Stamp



12-19-2024

Notes

- CROMWELL ARCHITECTS ENGINEERS, INC. ALL RIGHTS RESERVED
- THIS SHEET DESIGNED FOR COLOR PRINTING. CRITICAL INFORMATION MAY BE LOST WITH BLACK AND WHITE PRINTING.

Project Number

2024-134

Issue Date

12-19-2024

Sheet Title

PLUMBING
SCHEDULES AND
DETAILS

Sheet Number

P-601