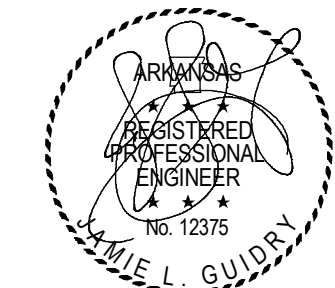
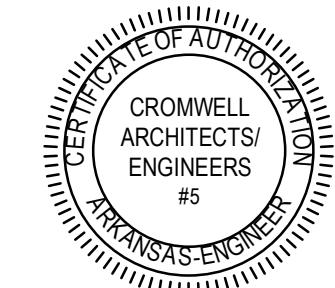


AEROJET BUILDING E33
OFFICE EXPANSION
EAST CAMDEN,
ARKANSAS

CONSTRUCTION
DOCUMENTS

No.	Date	Description



12-19-2024

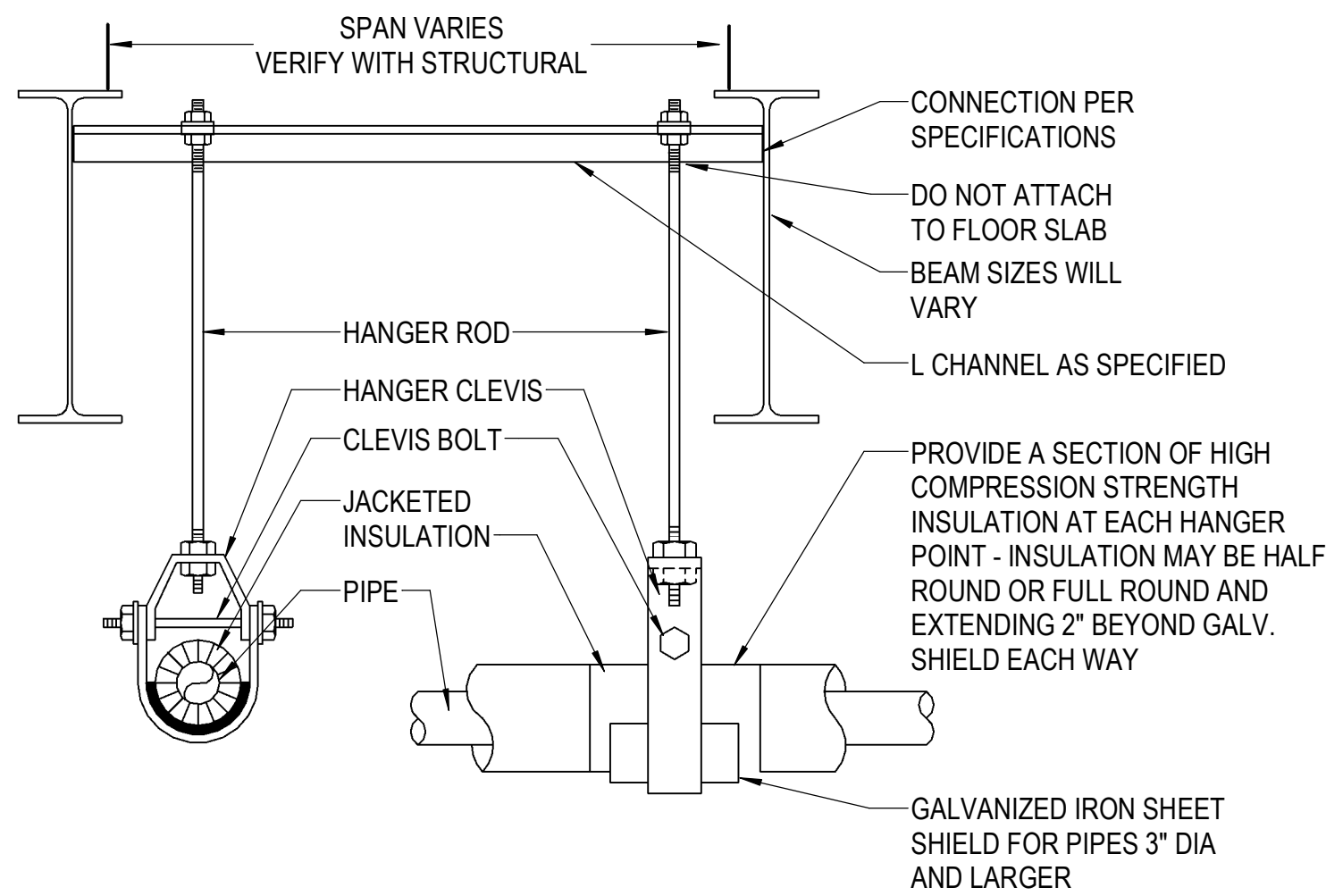
1. CROMWELL ARCHITECTS ENGINEERS, INC. ALL RIGHTS RESERVED
2. THIS SHEET DESIGNED FOR COLOR PRINTING. CRITICAL INFORMATION MAY BE LOST WITH BLACK AND WHITE PRINTING.

2024-134

12-19-2024

PLUMBING DETAILS

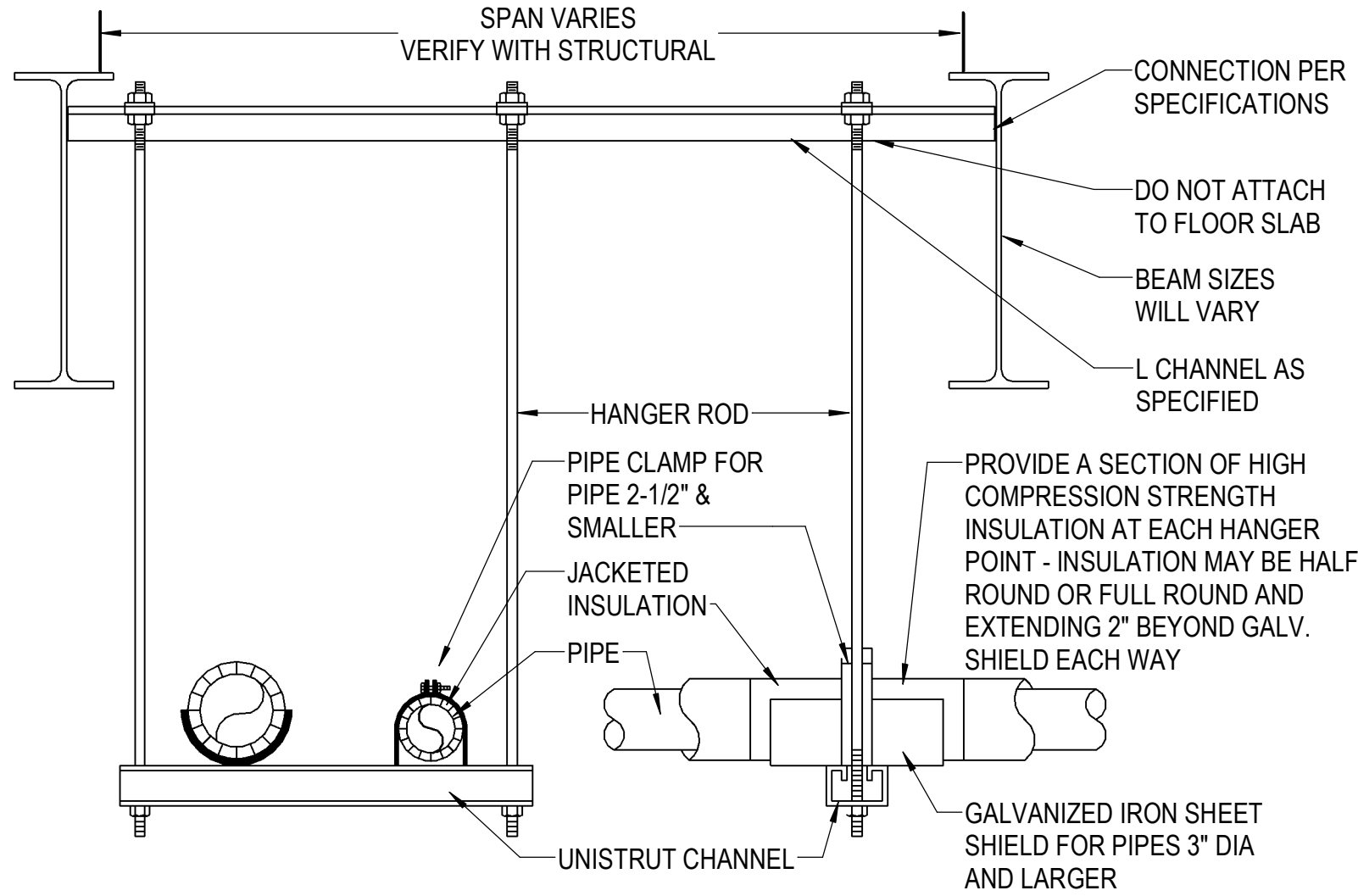
P-501



NOTES:

1. INSULATION TO BE CONTINUOUS THROUGH HANGERS. DO NOT BREAK INSULATION AT SUPPORTS, DO NOT INSULATE AROUND HANGERS.
2. INSULATION JACKET TO BE CONTINUOUS THROUGH PIPE SUPPORT COMPONENTS.
3. USE CLEVIS HANGERS FOR SINGLE PIPE RUNS, USE TRAPEZE HANGERS TO GROUP AS MUCH PIPING AS POSSIBLE PER HANGER.

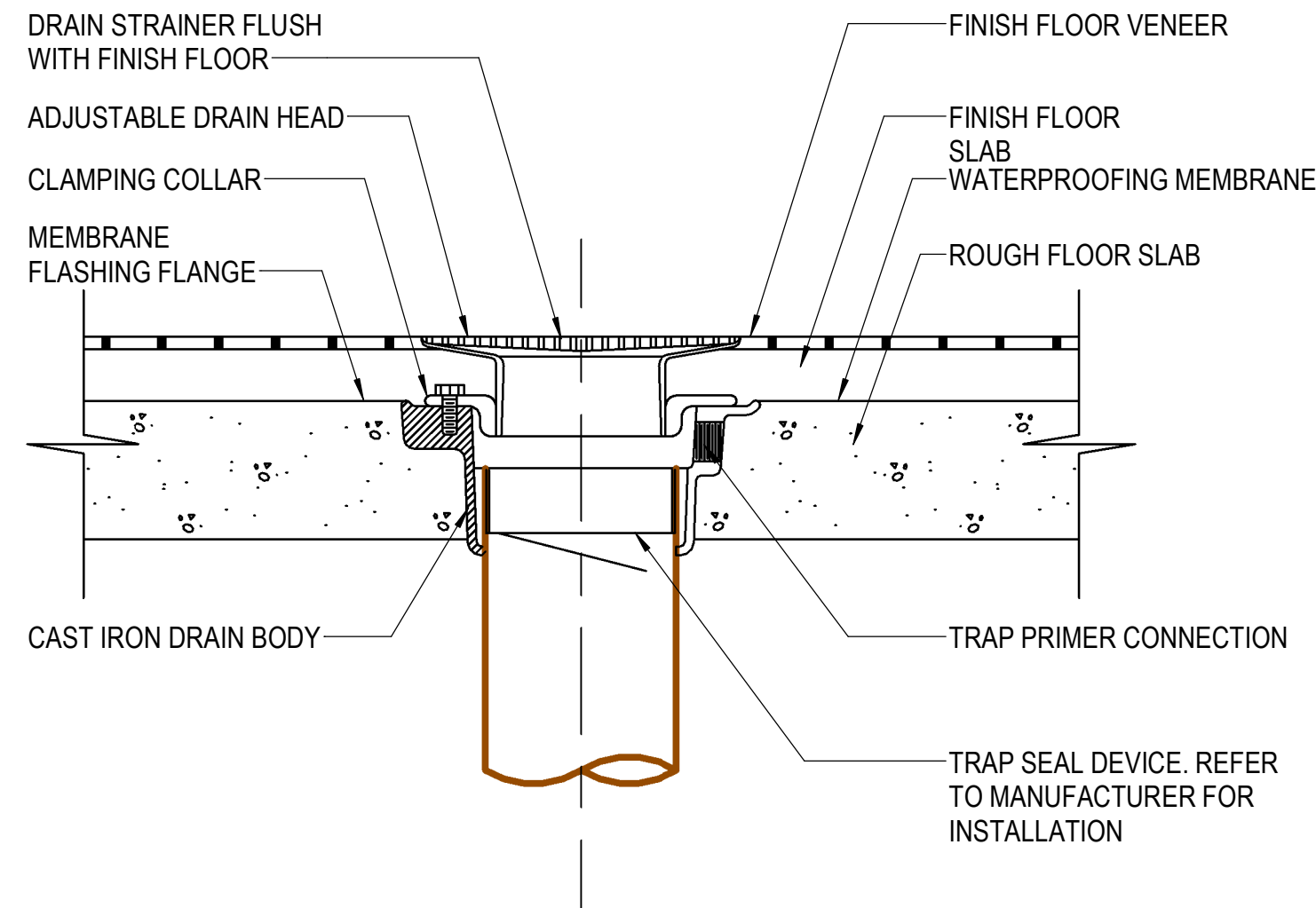
1 ADJUSTABLE CLEVIS HANGER
NOT TO SCALE



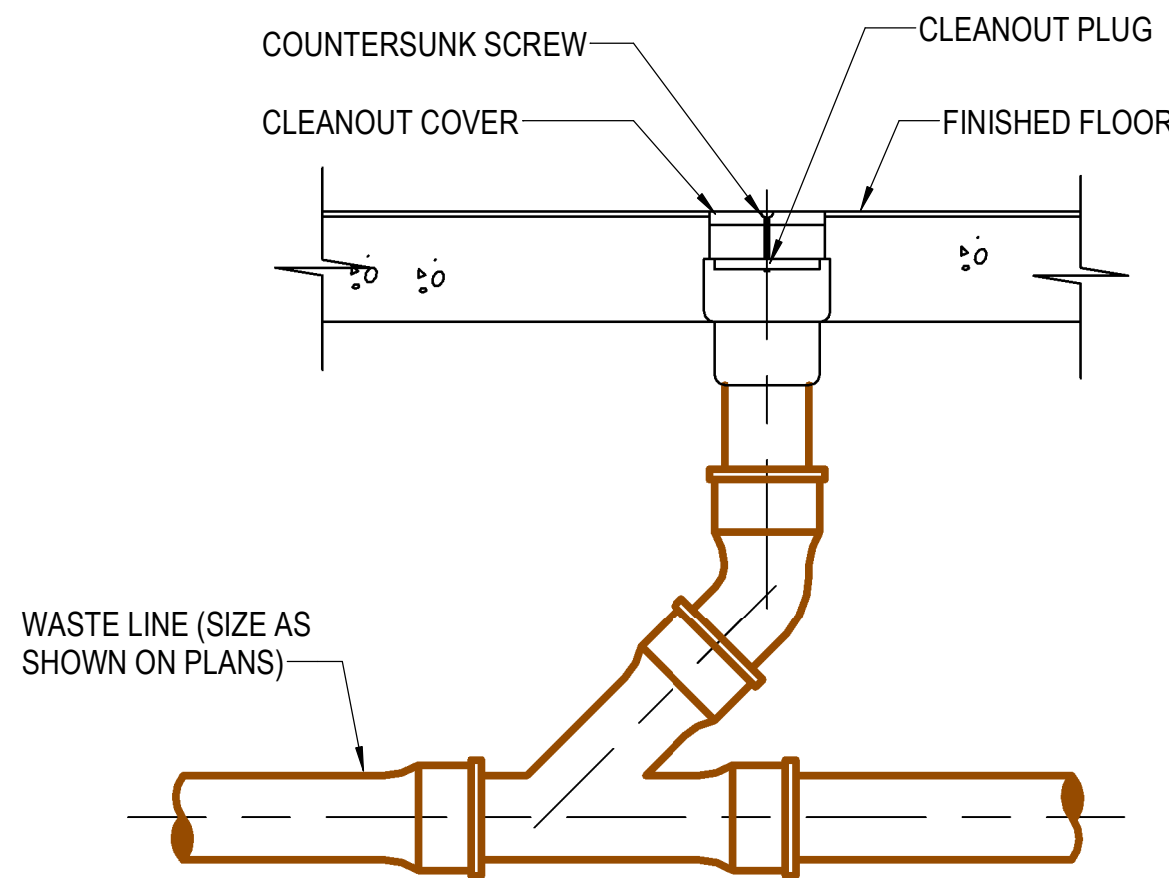
NOTES:

1. INSULATION TO BE CONTINUOUS THROUGH HANGERS. DO NOT BREAK INSULATION AT SUPPORTS, DO NOT INSULATE AROUND HANGERS.
2. INSULATION JACKET TO BE CONTINUOUS THROUGH PIPE SUPPORT COMPONENTS.
3. USE CLEVIS HANGERS FOR SINGLE PIPE RUNS, USE TRAPEZE HANGERS TO GROUP AS MUCH PIPING AS POSSIBLE PER HANGER.

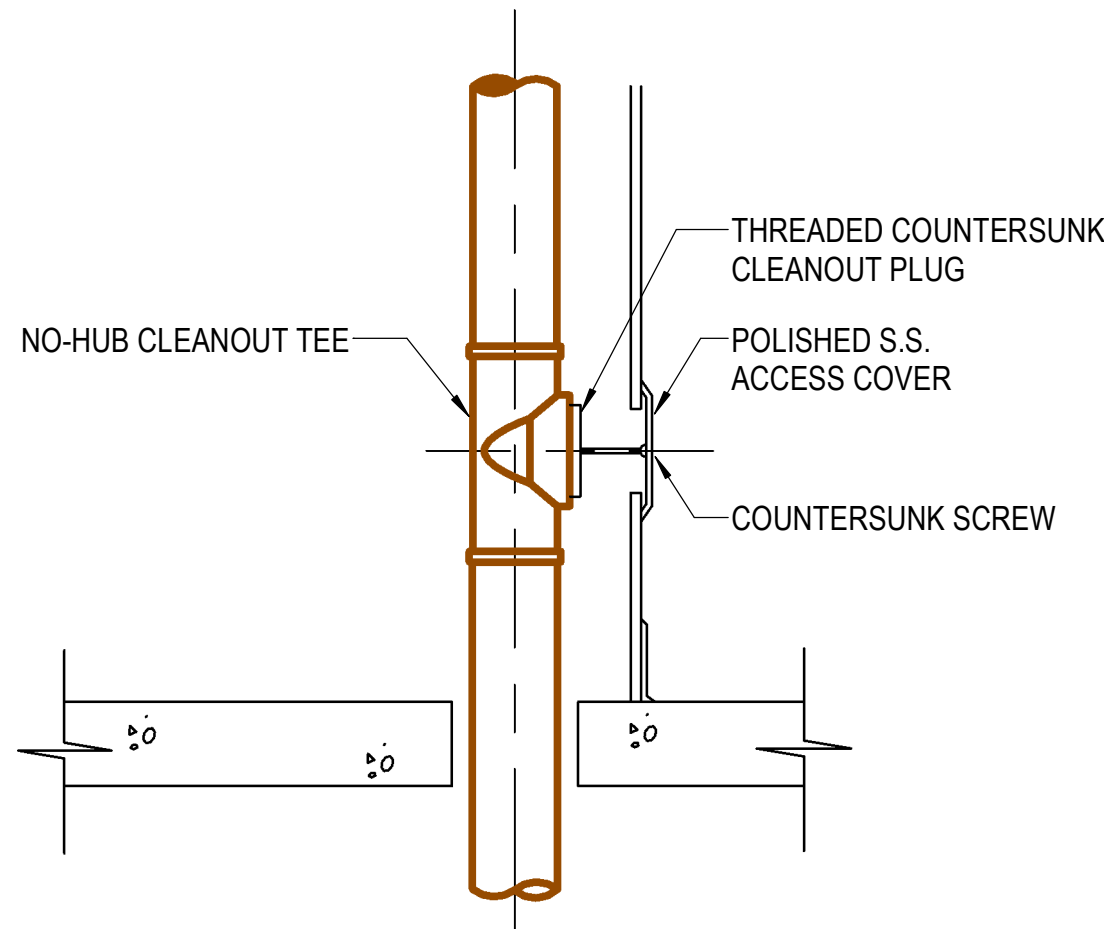
2 TRAPEZE PIPE HANGER
NOT TO SCALE



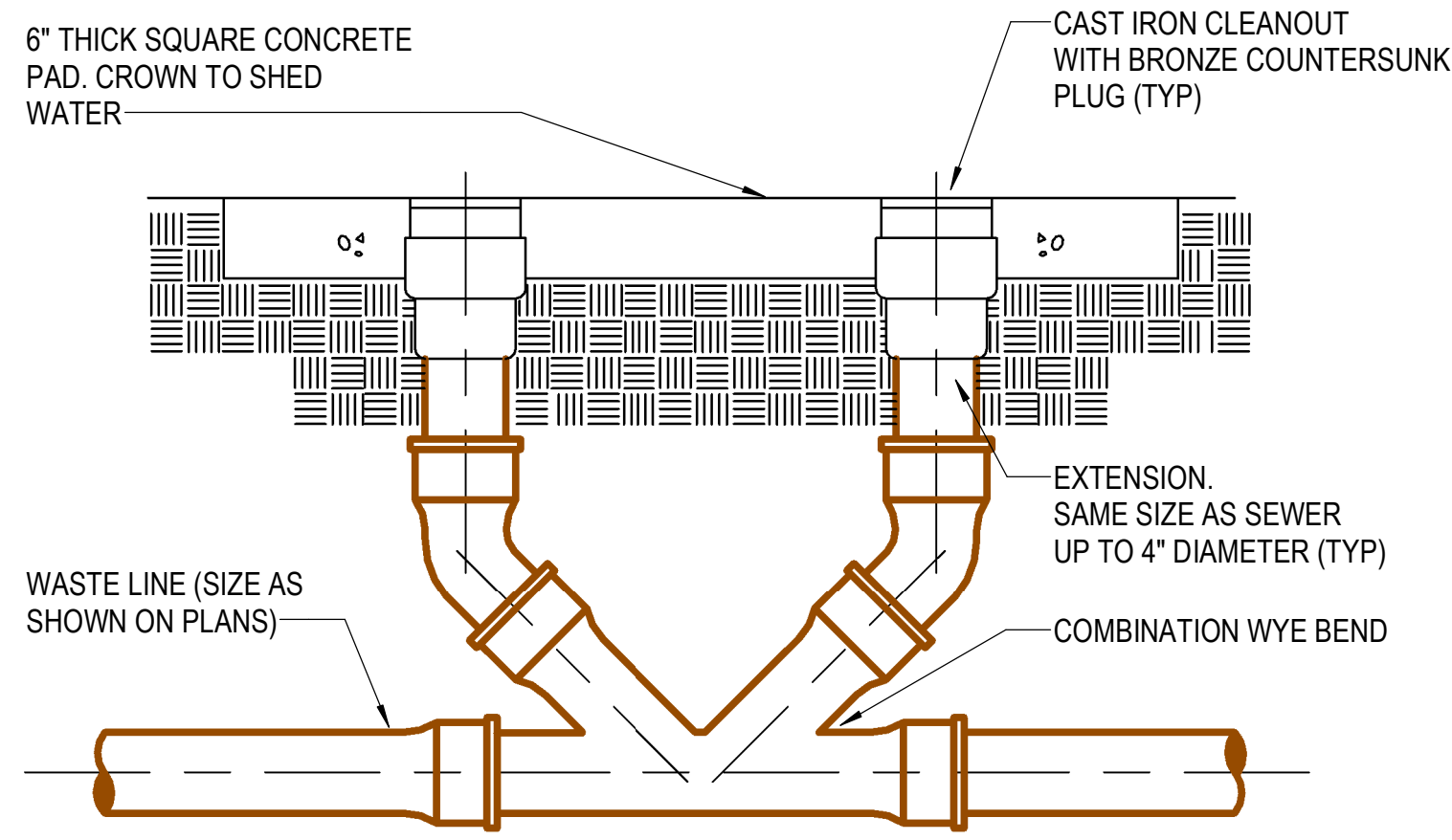
3 TRAP SEAL DEVICE INSTALLATION
NOT TO SCALE



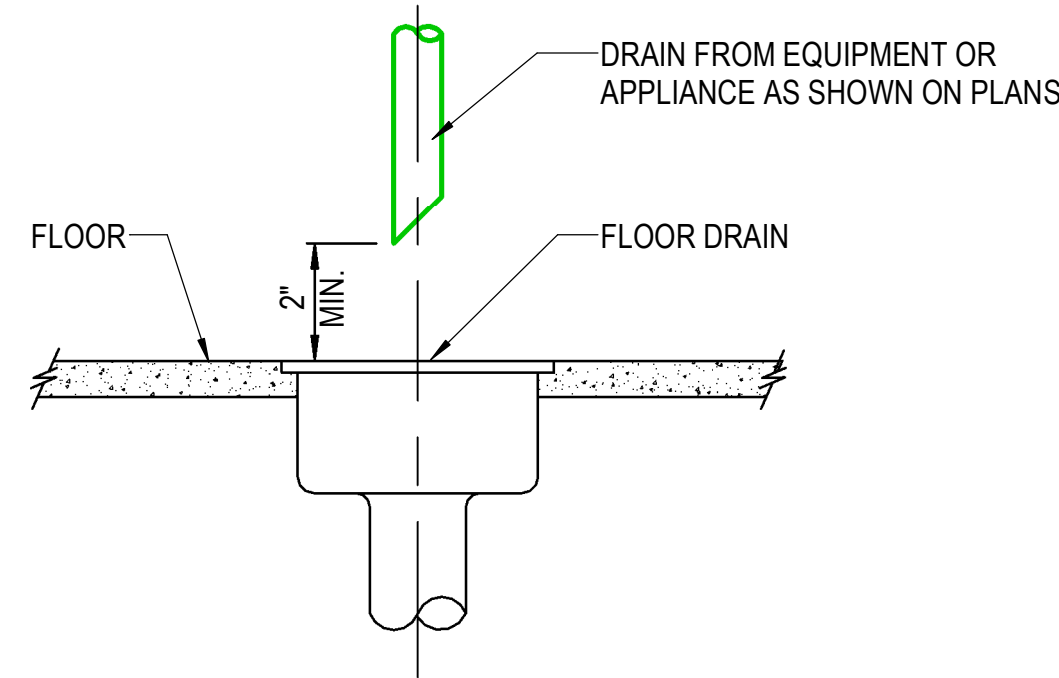
B FLOOR CLEANOUT
NOTE: SEE SPECIFICATIONS FOR MATERIALS



C WALL CLEANOUT
NOTE: SEE SPECIFICATIONS FOR MATERIALS



D DOUBLE CLEANOUT-TO-GRADE
NOTE: SEE SPECIFICATIONS FOR MATERIALS



5 INDIRECT WASTE DRAIN
NOT TO SCALE

4 TYPICAL CLEANOUTS
NOT TO SCALE