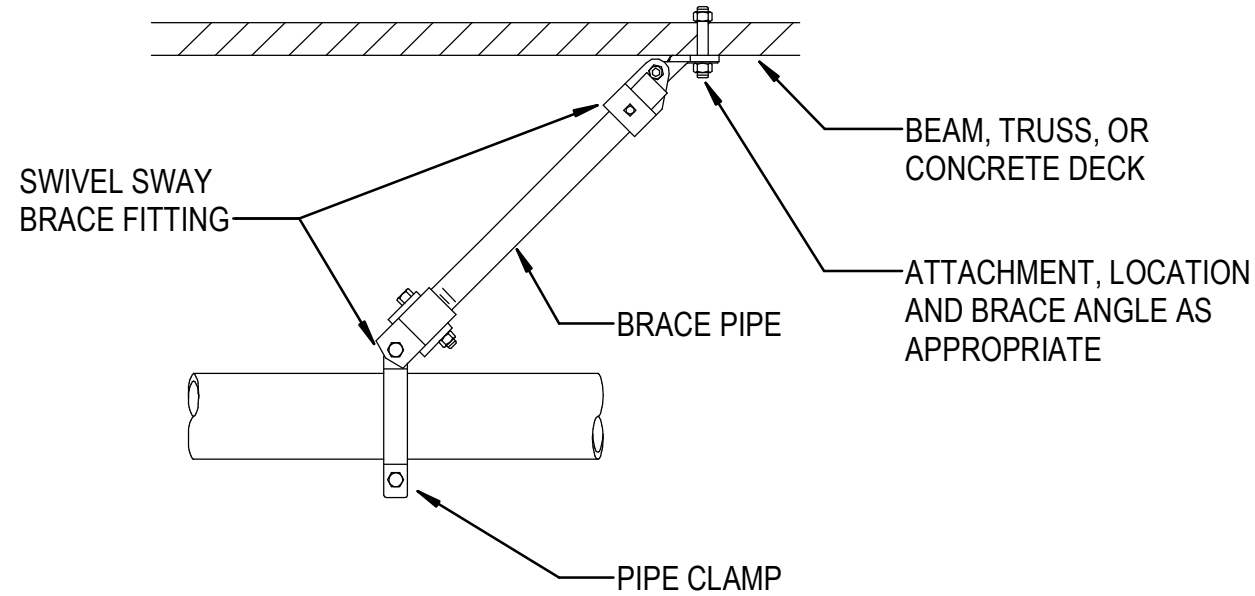
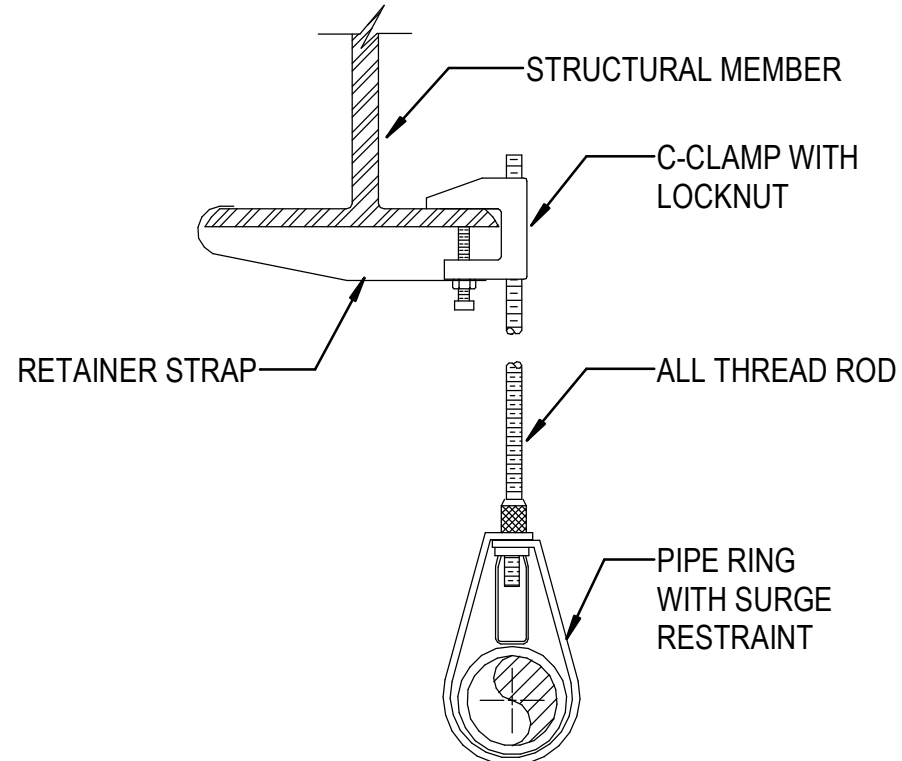


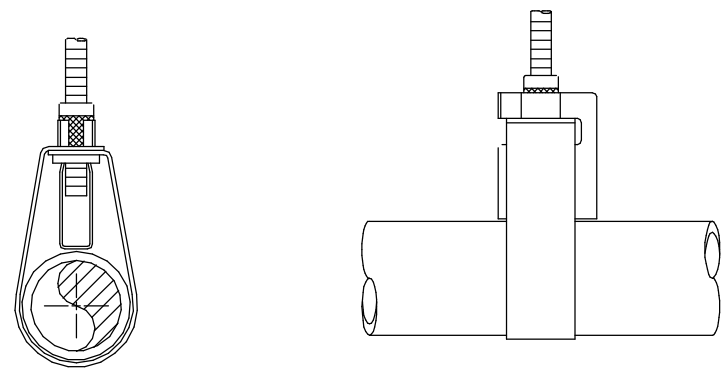
1 LATERAL SWAY BRACE
NOT TO SCALE



2 LONGITUDINAL SWAY BRACE DETAIL
NOT TO SCALE

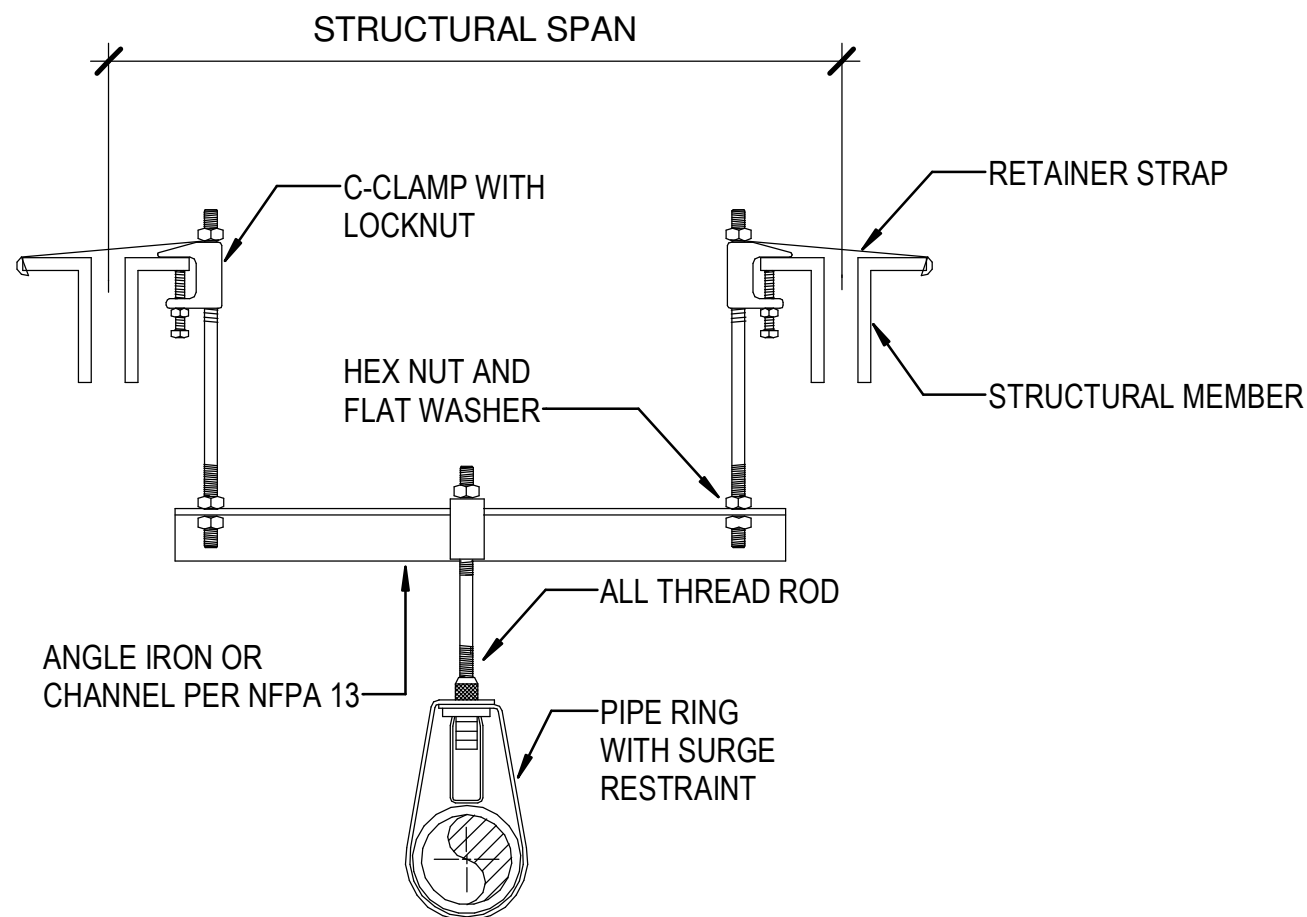


3 BEAM CLAMP HANGER
NOT TO SCALE

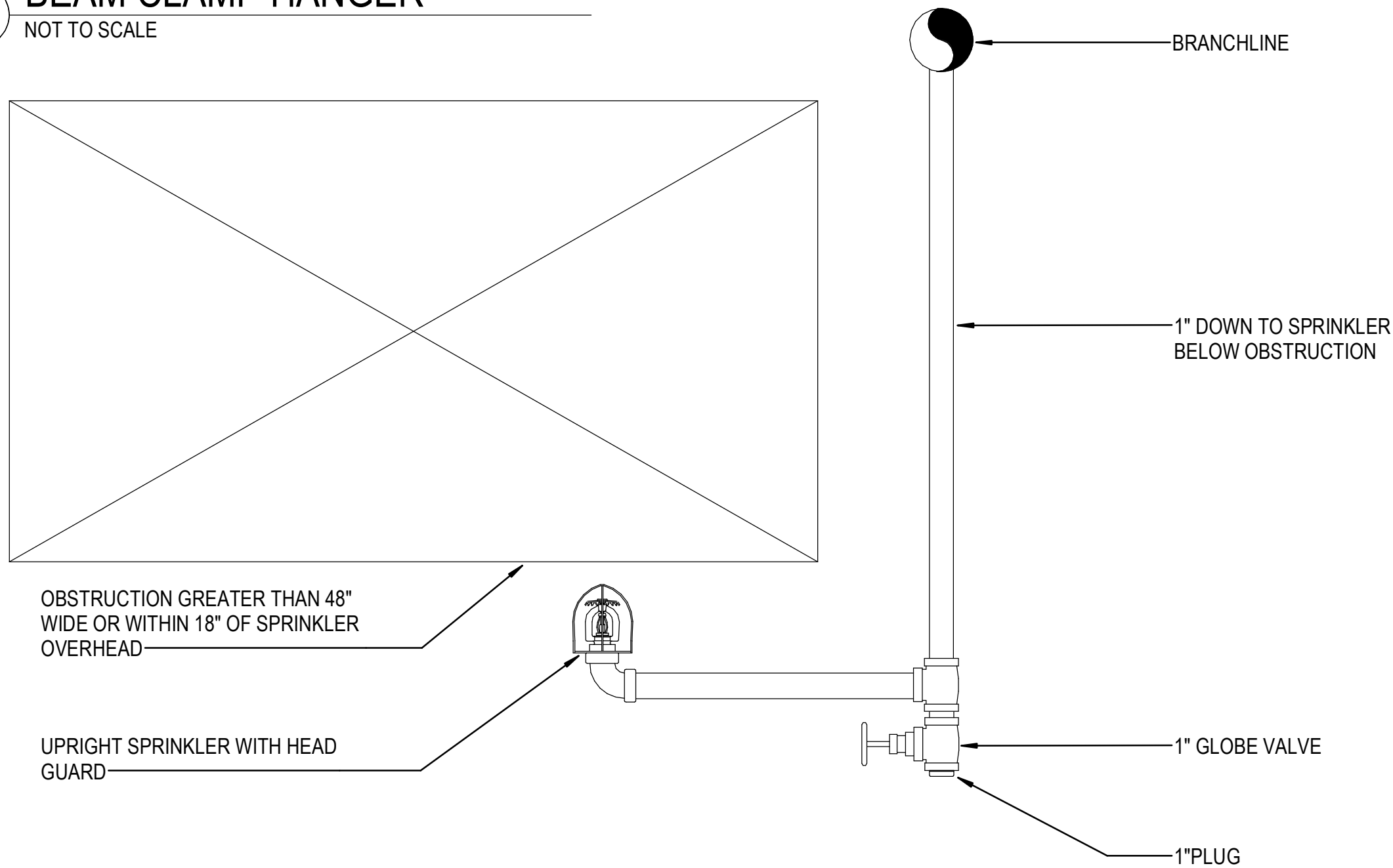


NOTE: SURGE RESTRAINERS ARE TO BE USED ONLY WITH BAND HANGERS TO RESTRAIN THE UPWARD MOVEMENT OF PIPE AS IT OCCURS DURING SPRINKLER HEAD ACTIVATION OR SEISMIC ACTIVITY. INSTALL AT ENDS OF LINES AND AT 30' INTERVALS ON BRANCH LINES.

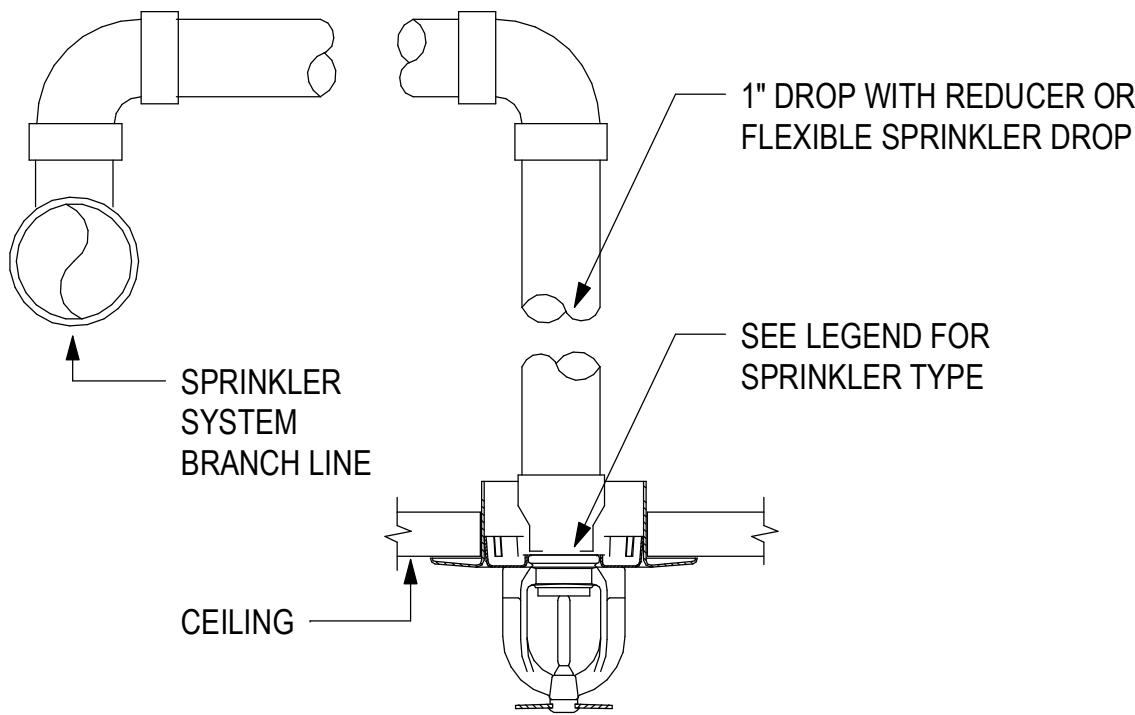
4 HANGER SURGE
NOT TO SCALE



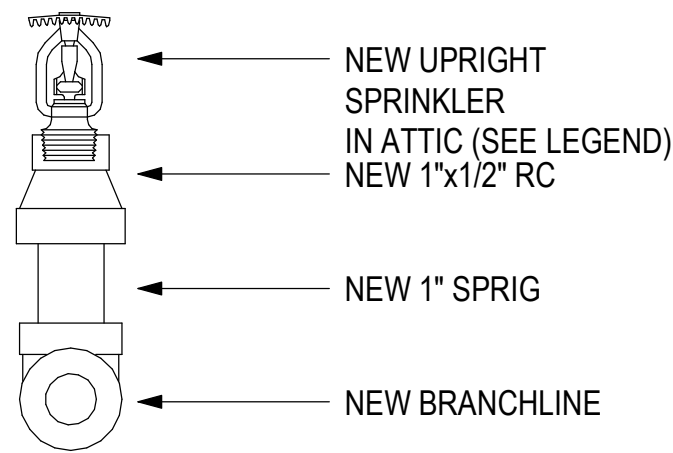
5 TRAPEZE HANGER
NOT TO SCALE



6 SPRINKLER UNDER OBSTRUCTION
NOT TO SCALE



7 RETURN BEND
NOT TO SCALE



8 UPRIGHT SPRINKLER DETAIL
NOT TO SCALE

Project

AEROJET BUILDING E33
OFFICE EXPANSION
EAST CAMDEN,
ARKANSAS

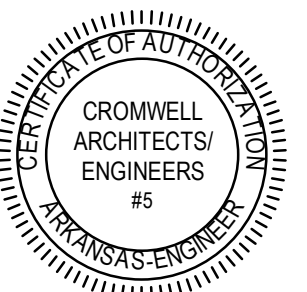
Design Phase

CONSTRUCTION
DOCUMENTS

Revisions

No.	Date	Description

Stamp



12-19-2024

Notes

1. CROMWELL ARCHITECTS ENGINEERS, INC.
ALL RIGHTS RESERVED

2. THIS SHEET DESIGNED FOR COLOR PRINTING.
CRITICAL INFORMATION MAY BE LOST WITH
BLACK AND WHITE PRINTING.

Project Number

2024-134

Issue Date

12-19-2024

Sheet Title

FIRE PROTECTION
DETAILS

Sheet Number

FX501