

Project

AEROJET BUILDING E33
OFFICE EXPANSION
EAST CAMDEN,
ARKANSAS

Design Phase

CONSTRUCTION
DOCUMENTS

Revisions

| No. | Date | Description |
|-----|------|-------------|
| | | |
| | | |
| | | |
| | | |
| | | |
| | | |
| | | |
| | | |
| | | |

Stamp



Notes

- CROMWELL ARCHITECTS ENGINEERS, INC. ALL RIGHTS RESERVED
- THIS SHEET DESIGNED FOR COLOR PRINTING. CRITICAL INFORMATION MAY BE LOST WITH BLACK AND WHITE PRINTING.

Project Number 2024-134

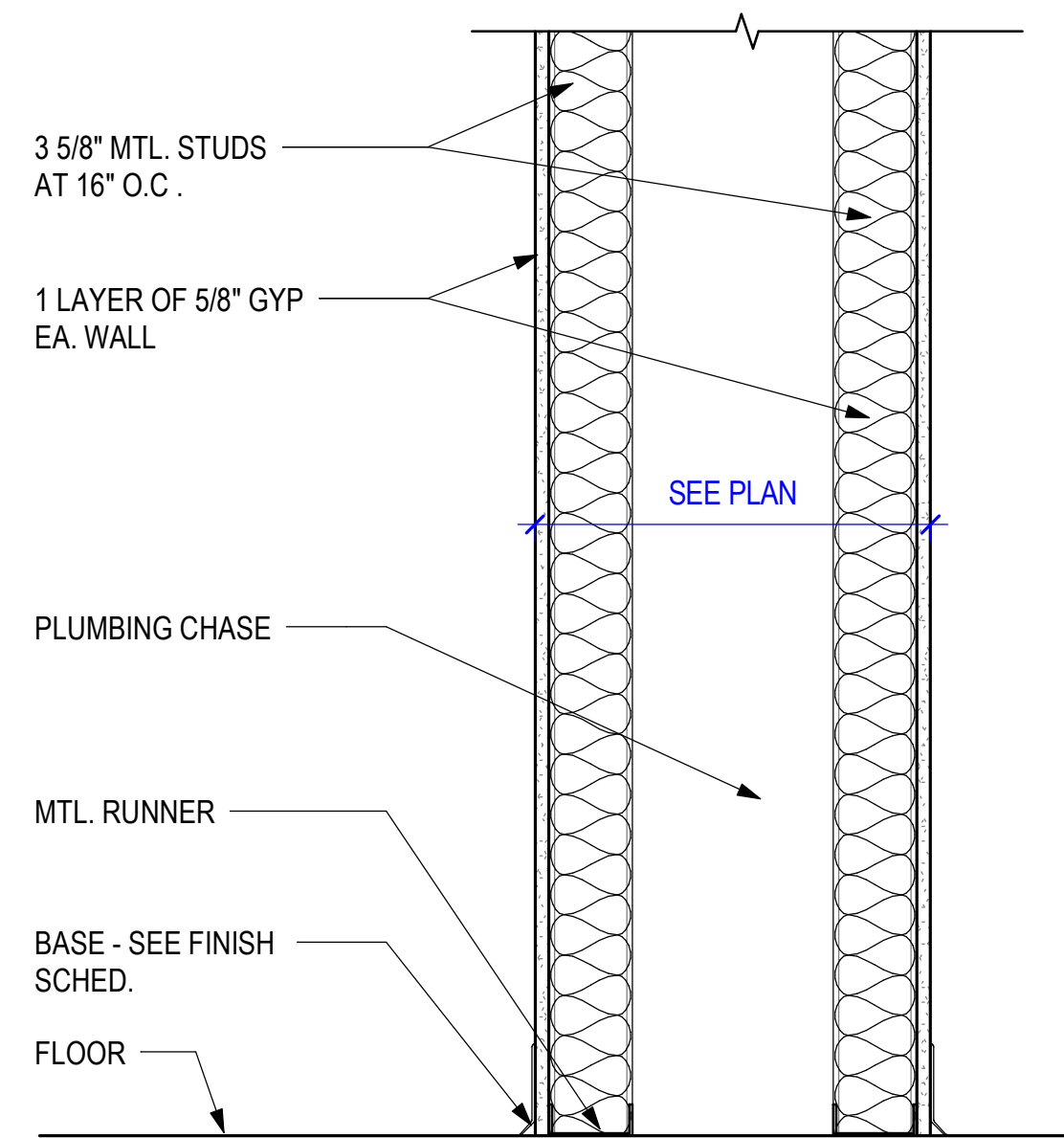
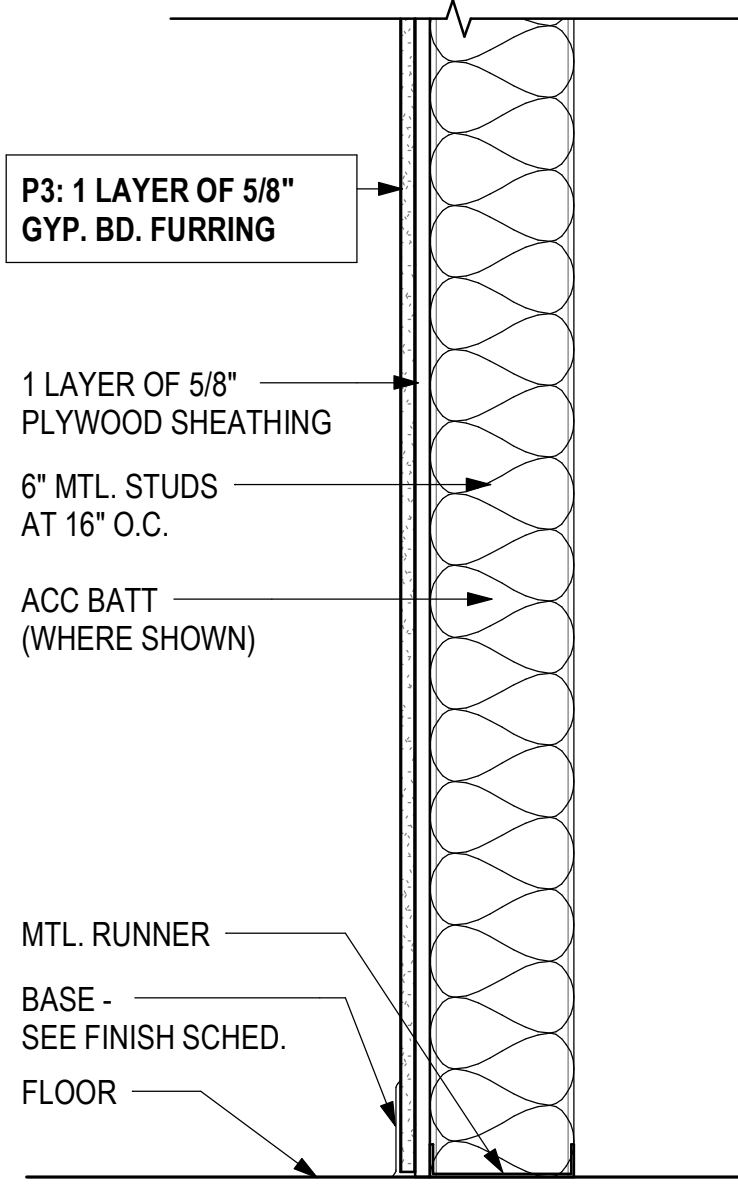
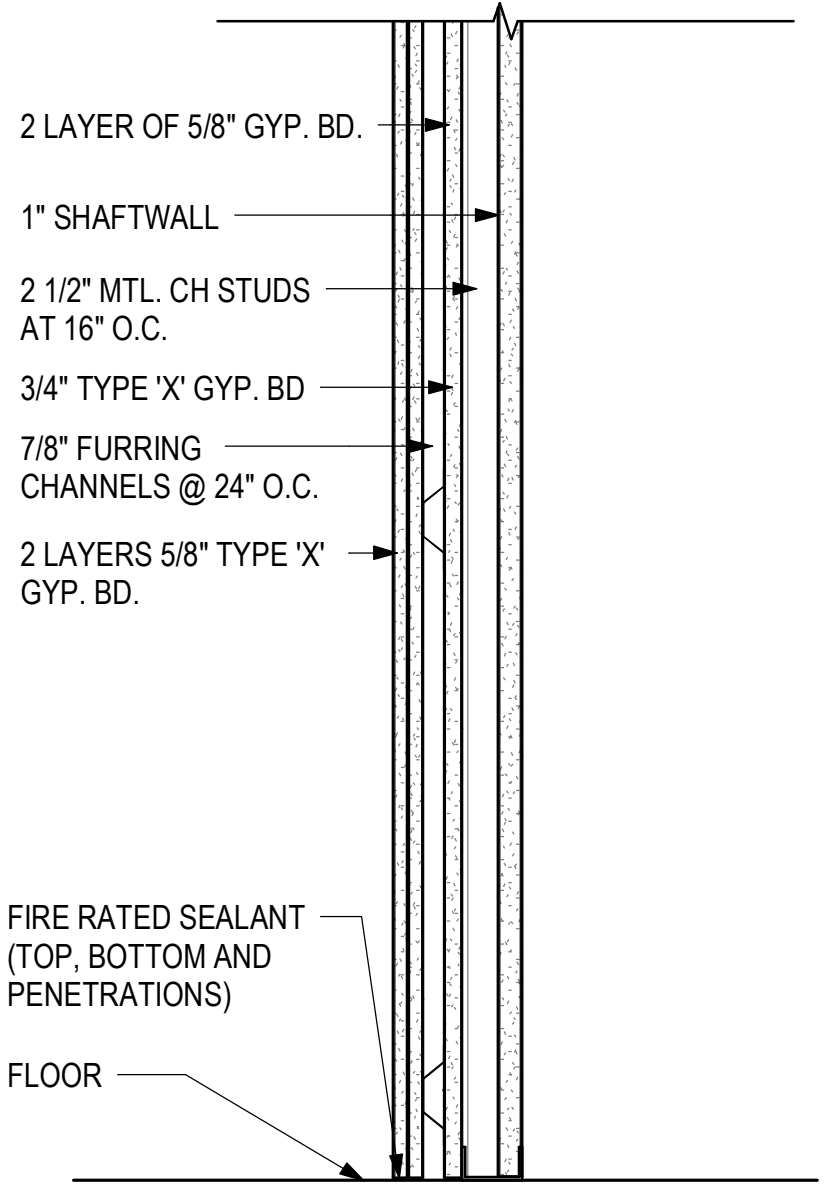
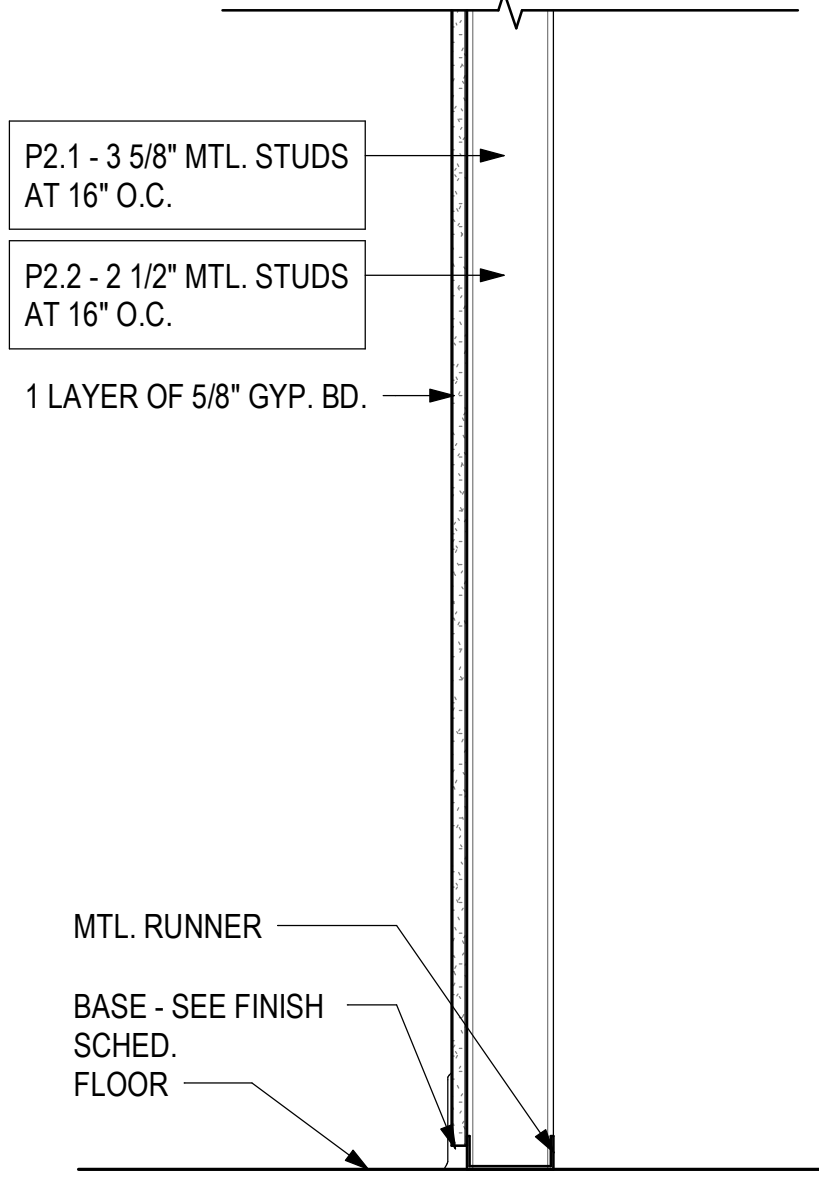
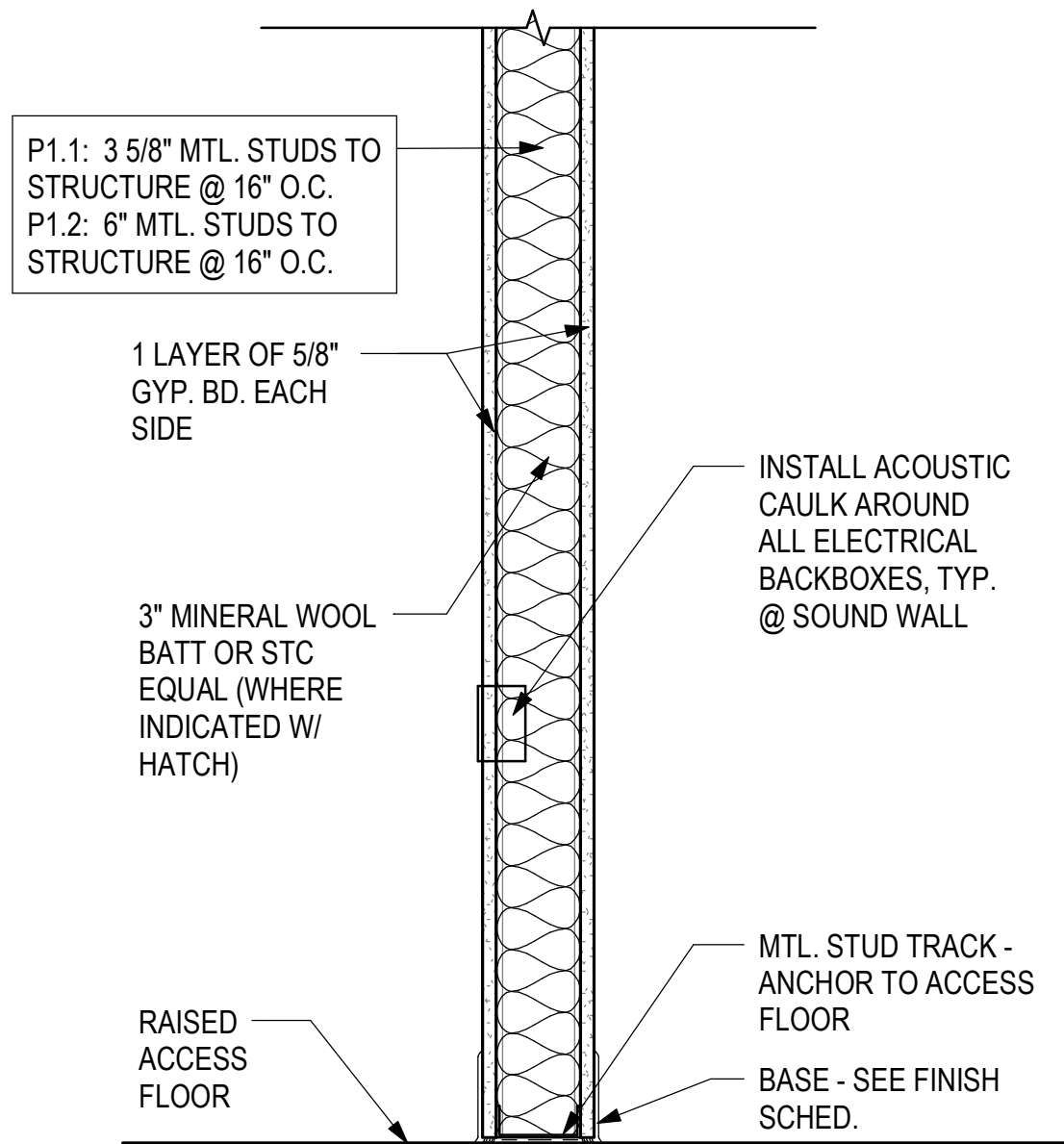
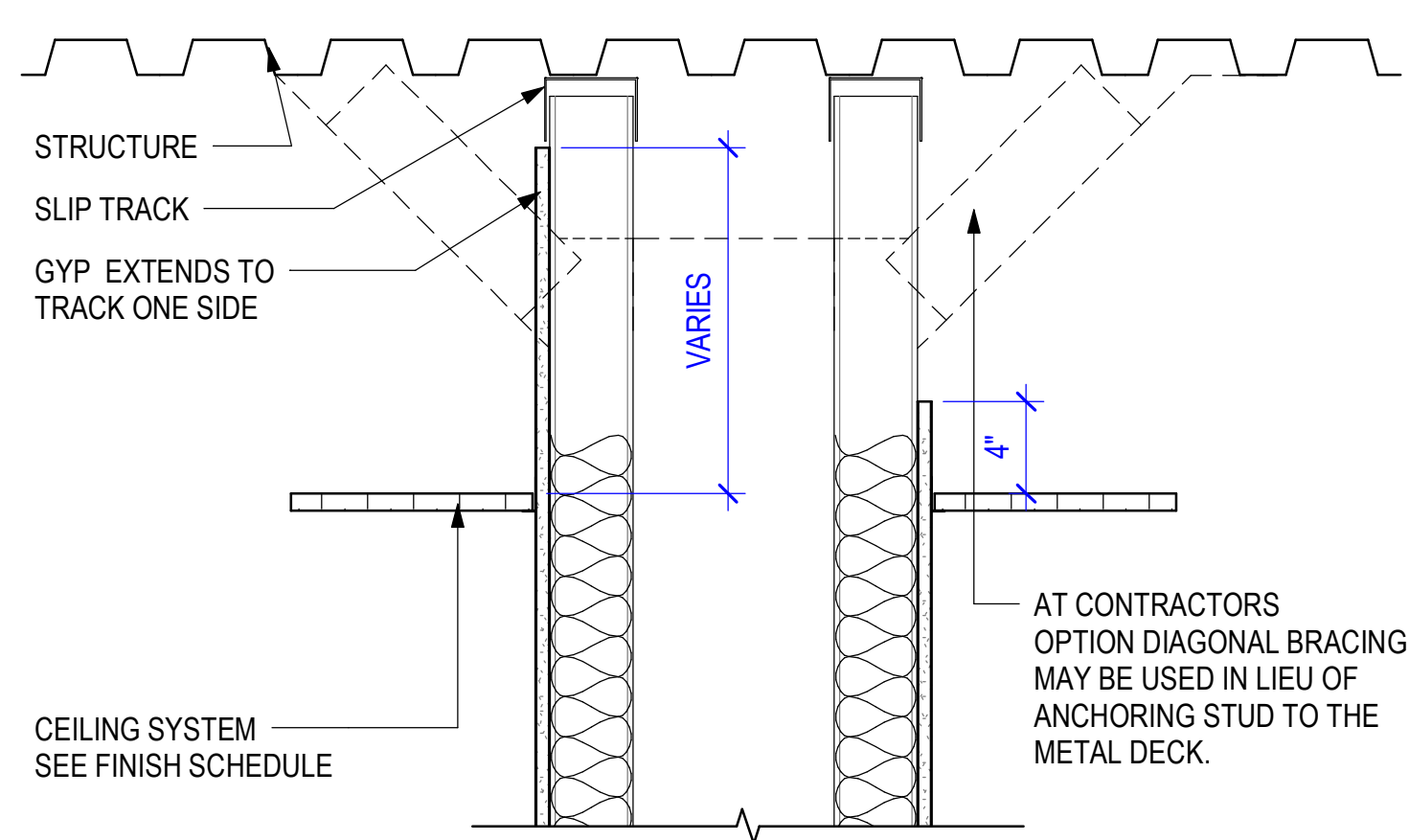
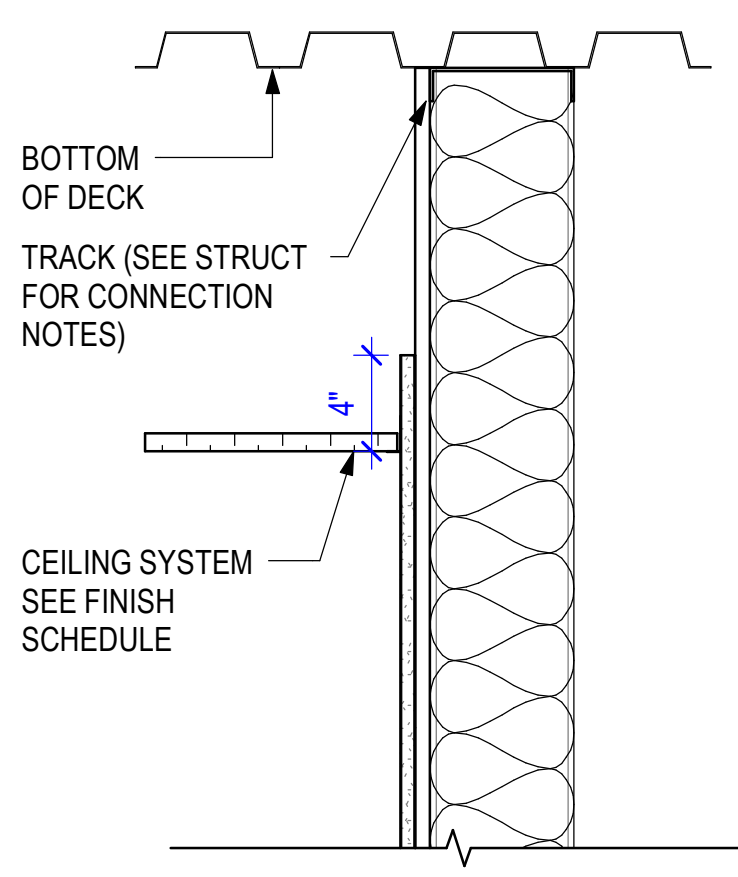
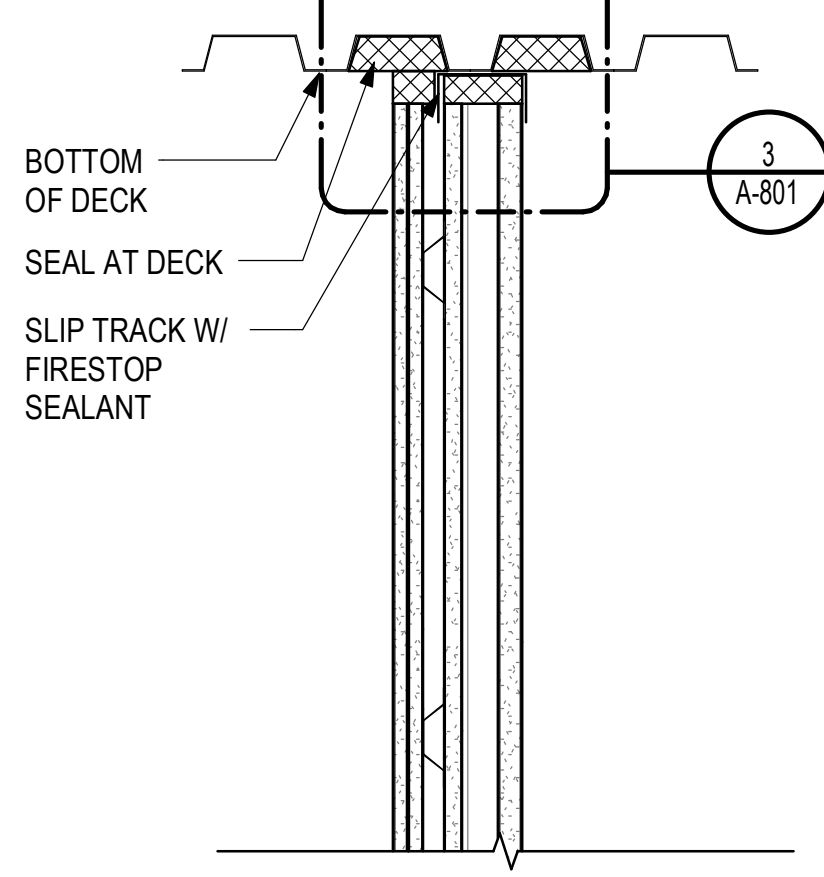
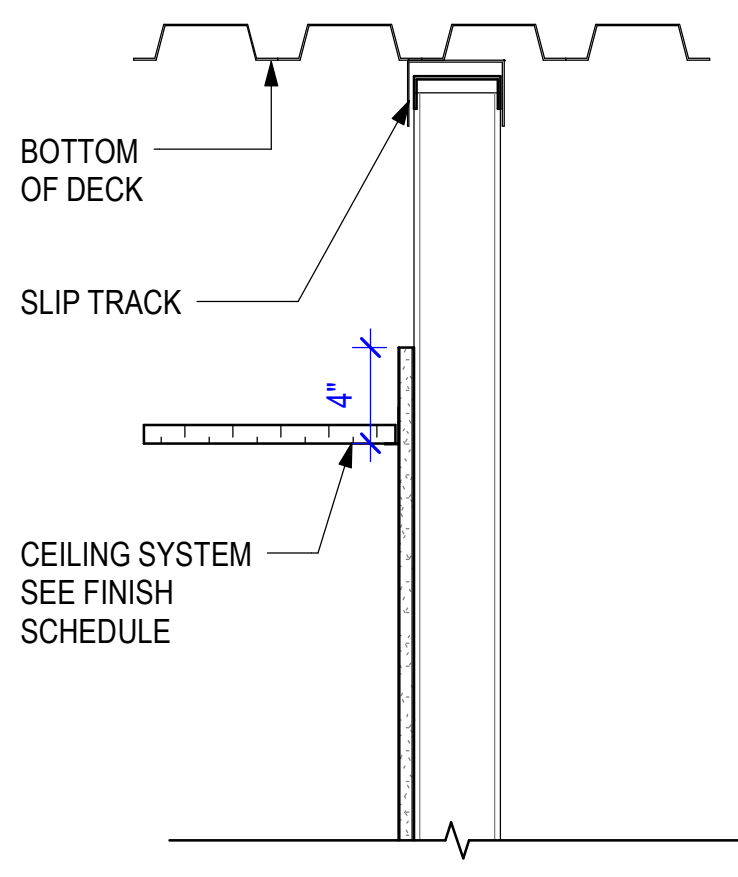
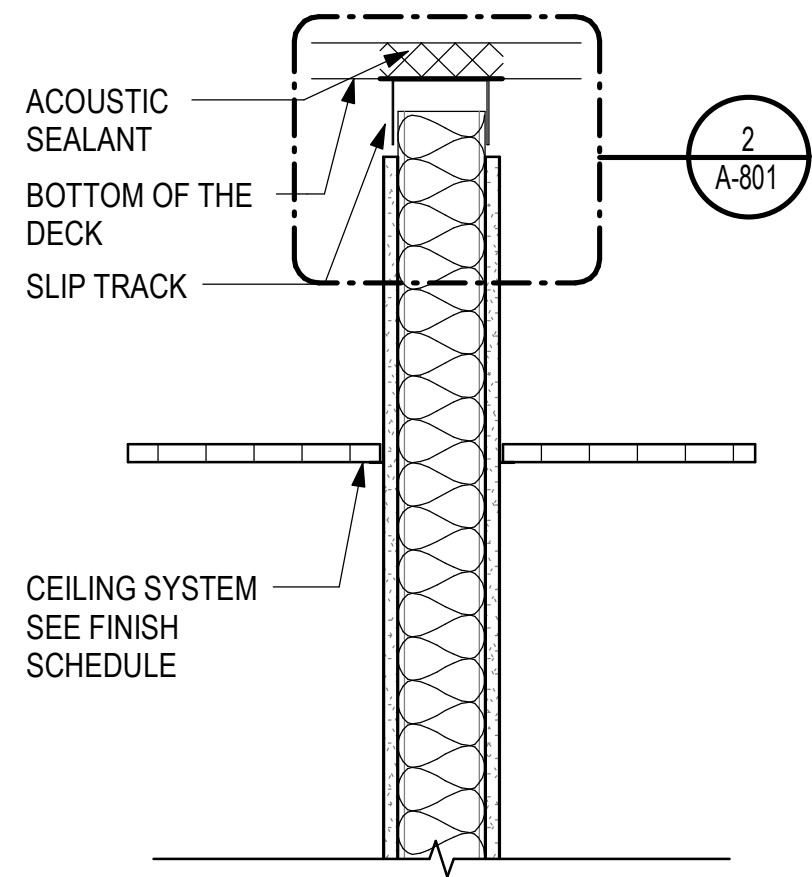
Issue Date 12-19-2024

Sheet Title

PARTITION TYPES

Sheet Number

A-801



STC 49

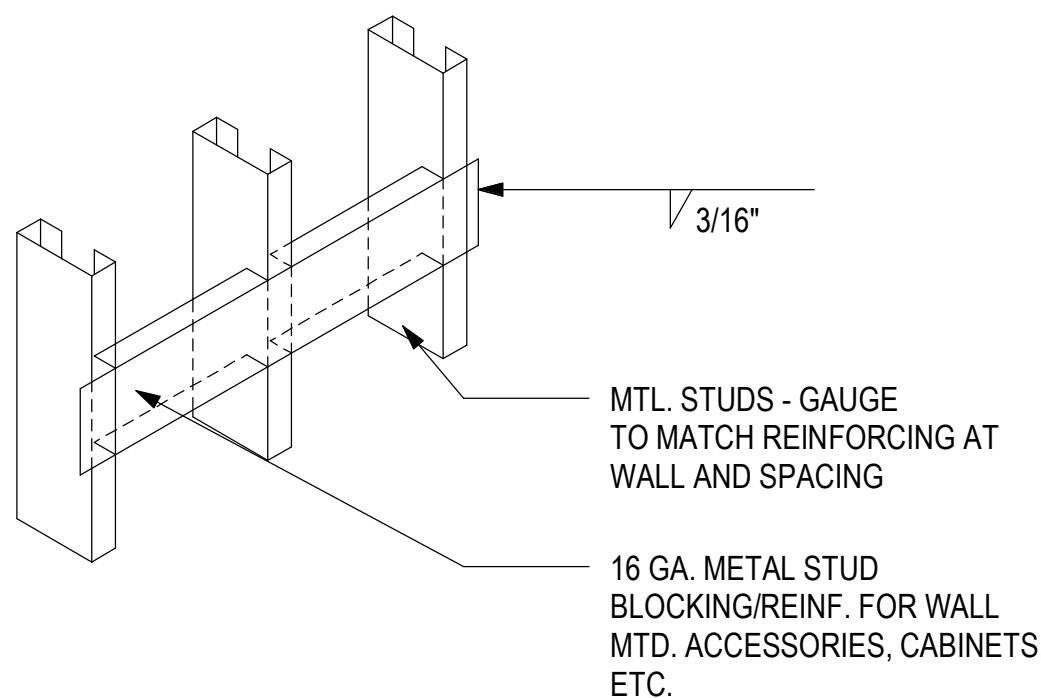
P1 STUD PARTITION
1 1/2" = 1'-0"

P2 GYP. FURRING PARTITION
1 1/2" = 1'-0"

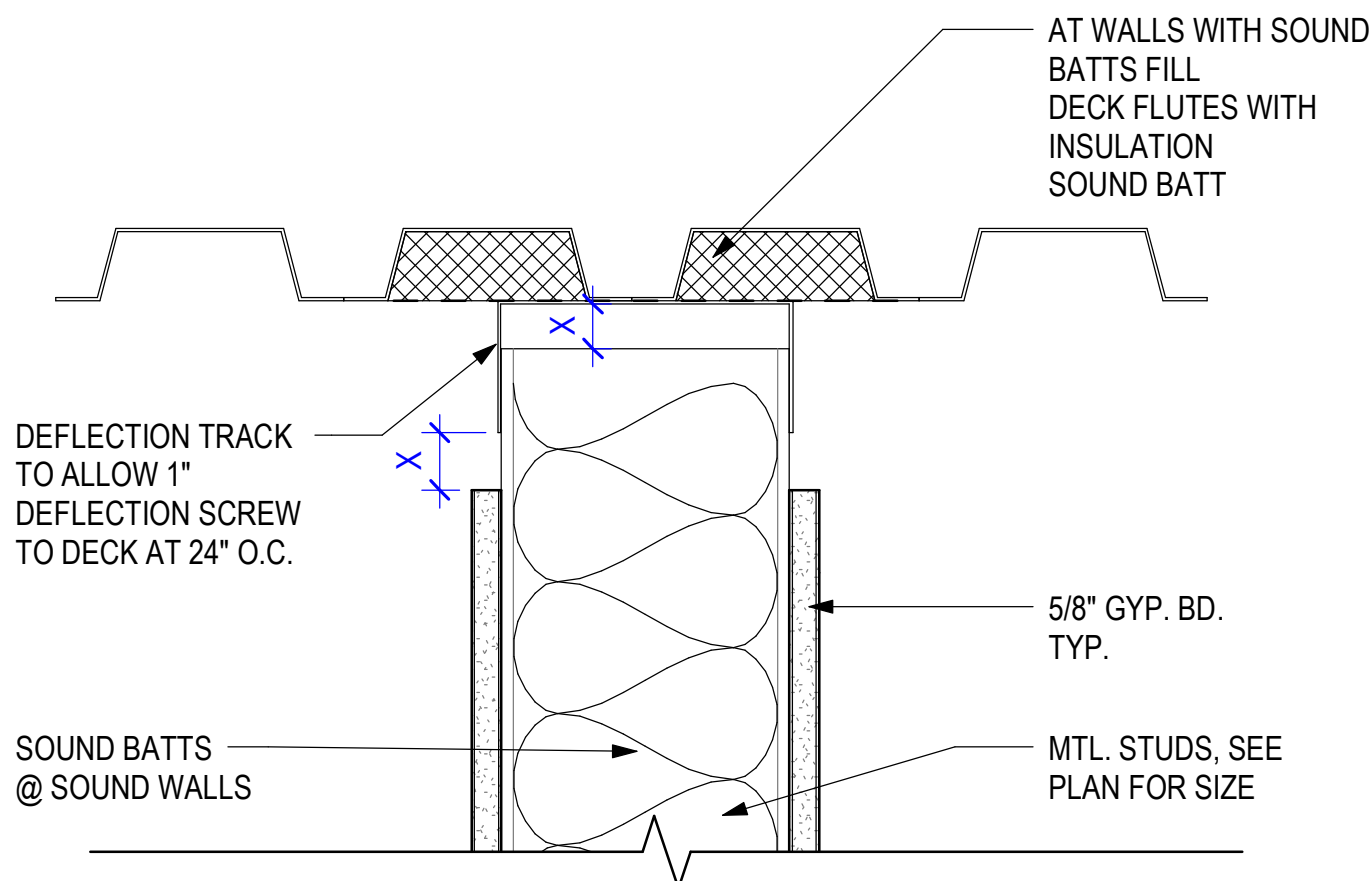
P3 4 HR SHAFT WALL (UL 415)
1 1/2" = 1'-0"

P4 GYP. FURRING PARTITION W/ SHEATHING
1 1/2" = 1'-0"

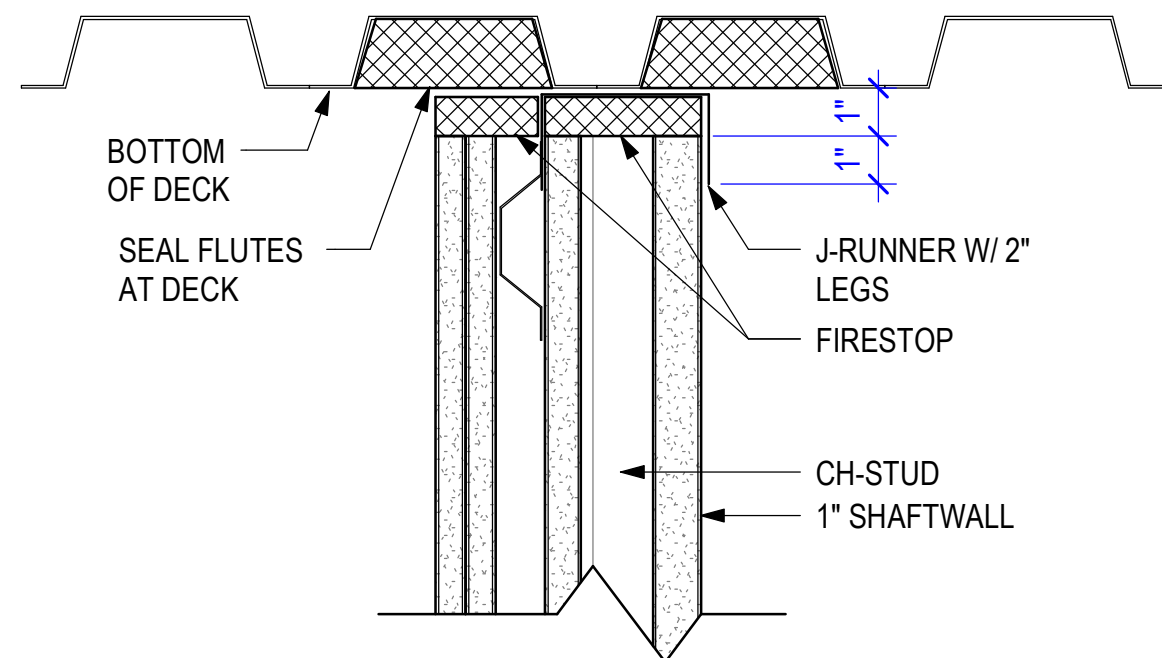
P5 STUD PLUMBING CHASE PARTITION
1 1/2" = 1'-0"



1 TYPICAL METAL STUD BLOCKING
3" = 1'-0"



2 PARTITION EXTENDED TO DECK
3" = 1'-0"



3 PARTITION EXTENDED TO DECK
3" = 1'-0"

| PARTITION TYPES | | | |
|-----------------|--|-------------|-----|
| Type Mark | Description | Fire Rating | STC |
| P1.1 | 5/8" GYP. BD. ON 3-5/8" METAL STUD W/ BATT INFILL (WHERE SHOWN) | -- | 49 |
| P1.2 | GYP. BD. ON 6" METAL STUD W/ BATT INFILL (WHERE SHOWN) | -- | 49 |
| P2.1 | GYP. BD. FURRING ON 3-5/8" METAL STUD | -- | -- |
| P2.2 | GYP. BD. ON 6" METAL STUD W/ 5/8" PLYWOOD SHEATHING | -- | -- |
| P3 | 1" SHAFT WALL ON 2 1/2" CH STUDS W/ 3/4" GYP, 7/8" FURRING CHANNEL, 2 LAYERS 5/8" GYP. | 4HR | -- |
| P4 | 5/8" GYP. BD. FURRING W/ 5/8" PLYWOOD SHEATHING OVER 6" MTL. STUDS W/ BATT INSUALTION | -- | -- |
| P5 | GYP. BD. PLUMBING CHASE ON 3 5/8" MTL. STUDS | -- | 49 |