

KEYED NOTES

- 1
- VERIFY LOCATION, SIZE, AND CONDITION OF EXISTING DOMESTIC COLD WATER. REPAIR AS NEEDED. CONNECT NEW FIXTURES TO EXISTING COMPLETE AND OPERABLE WITH ALL NECESSARY ACCESSORIES, ISOLATION VALVES, AND WATER HAMMER ARRESTORS.

2

VERIFY LOCATION, SIZE, AND INVERT OF EXISTING SANITARY WASTE PIPING TO SEPTIC SYSTEM. VERIFY CONDITION REPAIR AS NEEDED. CONNECT NEW FIXTURES TO EXISTING COMPLETE AND OPERABLE.

GENERAL NOTES

- 1
- REFER TO SHEET P-001 FOR LEGEND AND NOTES.

2

FIBER OPTIC DATA LINE BURIED BELOW NEW BUILDING FOOTPRINT. LINE MUST NOT BE DISTURBED UNDER ANY CIRCUMSTANCES. COORDINATE WITH AEROJET.

Project

AEROJET

ROCKETDYNE

BUILDING A14  
TOILET RENOVATION &  
BREAKROOM ADDITION  
EAST CAMDEN, ARKANSAS

CONSTRUCTION DOCUMENTS

Revisions		
No.	Date	Description

Stamp

CROMWELL ARCHITECTS/ENGINEERS #5

REGISTERED PROFESSIONAL ENGINEER NO. 12375

11-13-2024

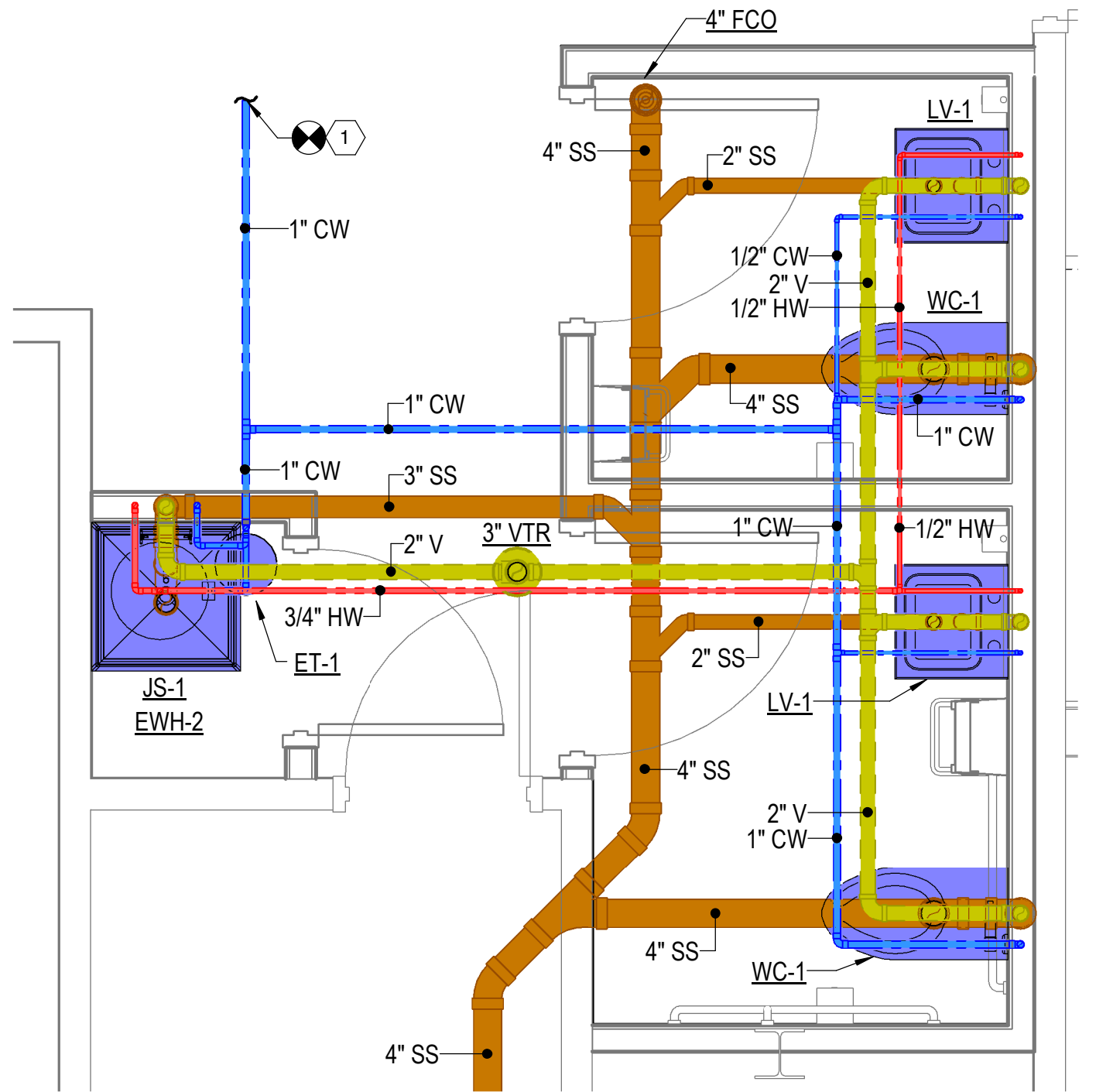
- Notes
1. CROMWELL ARCHITECTS ENGINEERS, INC. ALL RIGHTS RESERVED
2. THIS SHEET DESIGNED FOR COLOR PRINTING. CRITICAL INFORMATION MAY BE LOST WITH BLACK AND WHITE PRINTING.

Project Number 2024-116  
Issue Date 11-13-2024  
Sheet Title

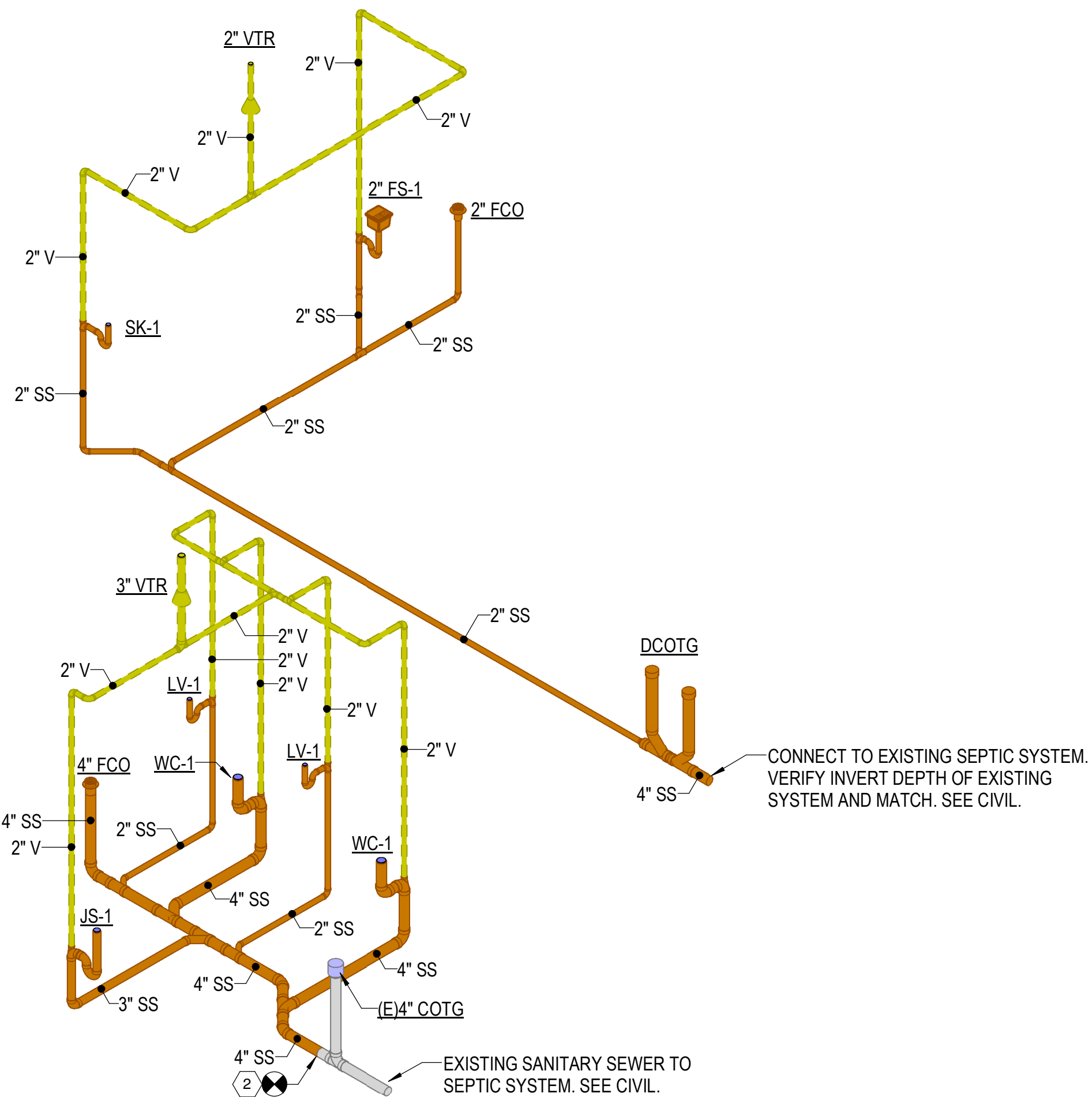
PLUMBING ENLARGED PLAN AND RISER

Sheet Number

P-401



1 ENLARGED RESTROOM PLAN  
1/2" = 1'-0"



2 DRAIN, WASTE, VENT PLUMBING RISER  
NOT TO SCALE