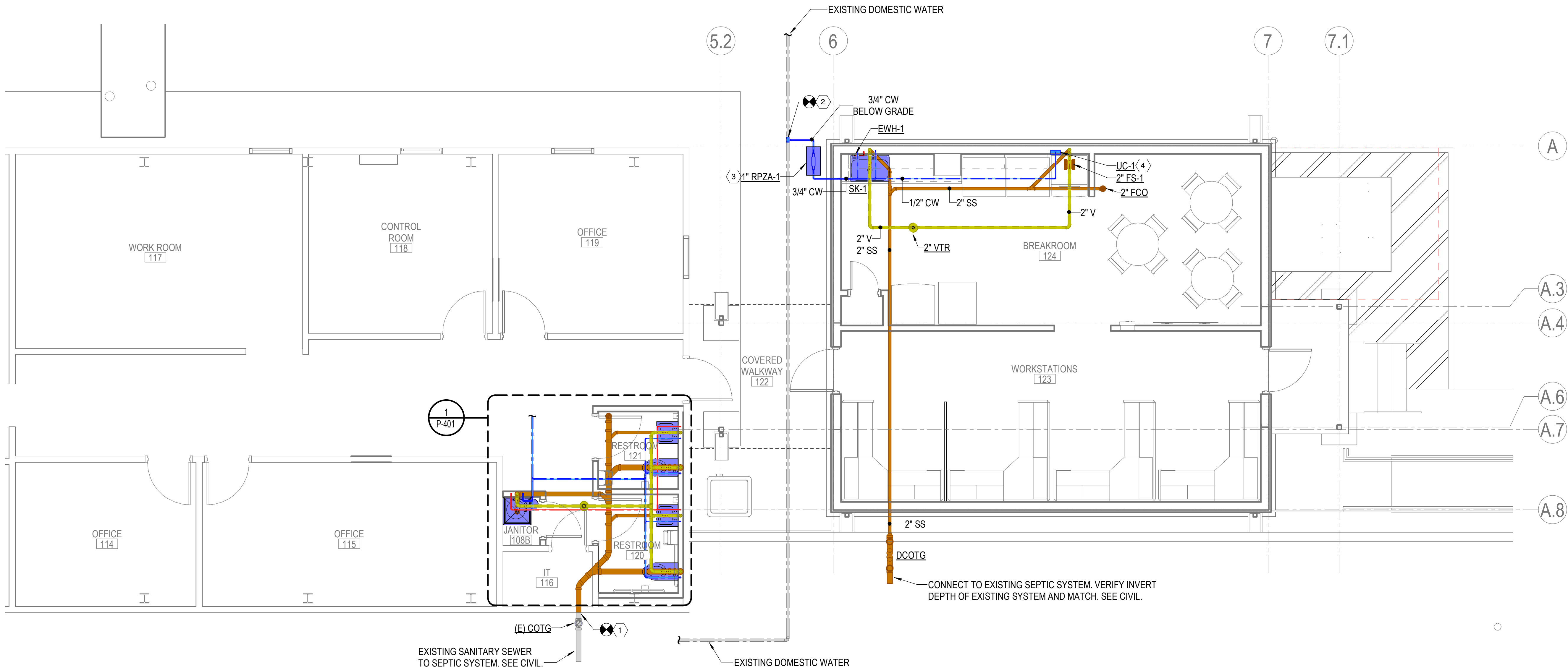


KEYED NOTES

- 1 VERIFY LOCATION, SIZE, AND INVERT OF EXISTING SANITARY WASTE PIPING TO SEPTIC SYSTEM. VERIFY CONDITION REPAIR AS NEEDED. CONNECT NEW FIXTURES TO EXISTING COMPLETE AND OPERABLE.
- 2 VERIFY LOCATION AND SIZE OF EXISTING DOMESTIC WATER PIPING. CONNECT NEW BELOW-GRADE DOMESTIC WATER PIPE AND ROUTE TO NEW BACKFLOW PREVENTER.
- 3 INSTALL NEW 1" BACKFLOW PREVENTER OUTSIDE OF BUILDING IN ENCLOSURE. SEE DETAIL 1/P-501.
- 4 PROVIDE IN-LINE CARTRIDGE FILTER FOR WATER SUPPLY TO ICE MACHINE.

GENERAL NOTES

- 1 REFER TO SHEET P-001 FOR LEGEND AND NOTES.
- 2 FIBER OPTIC DATA LINE BURIED BELOW NEW BUILDING FOOTPRINT. LINE MUST NOT BE DISTURBED UNDER ANY CIRCUMSTANCES. COORDINATE WITH AEROJET.



1 FIRST FLOOR PLUMBING PLAN
1/4" = 1'-0"

Project
AEROJET
ROCKETDYNE
BUILDING A14
TOILET RENOVATION &
BREAKROOM ADDITION
EAST CAMDEN, ARKANSAS

CONSTRUCTION DOCUMENTS

Revisions		
No.	Date	Description

Stamp

CROMWELL ARCHITECTS/ENGINEERS #5
REGISTERED PROFESSIONAL ENGINEER
NO. 12375
JAMES L. GUIDRY
11-13-2024

Notes

1. CROMWELL ARCHITECTS ENGINEERS, INC. ALL RIGHTS RESERVED

2. THIS SHEET DESIGNED FOR COLOR PRINTING. CRITICAL INFORMATION MAY BE LOST WITH BLACK AND WHITE PRINTING.

Project Number 2024-116
Issue Date 11-13-2024
Sheet Title

PLUMBING OVERALL PLAN

Sheet Number