

GENERAL NOTES

1 REFER TO SHEET M-001 FOR MECHANICAL NOTES, ABBREVIATIONS, AND LEGEND SYMBOLS.

KEYED NOTES

- 1 EXISTING DUCTWORK TO REMAIN. REMOVE EXISTING CEILING AIR DEVICES AND STORE FOR RE-INSTALLATION IN THE NEW CEILING. AIR DEVICE LAYOUT SHOWN IN ASSUMED. FIELD VERIFY EXACT LAYOUT PRIOR TO BID.
- 2 EXISTING DUCTWORK TO REMAIN. REMOVE EXISTING CEILING AIR DEVICE AND CEILING EXHAUST FAN AND STORE FOR RE-INSTALLATION IN THE NEW CEILING. AIR DEVICE AND FAN LAYOUT SHOWN IN ASSUMED. FIELD VERIFY EXACT LAYOUT PRIOR TO BID.

Project

AER JET
ROCKETDYNE

BUILDING A14
TOILET RENOVATION &
BREAKROOM ADDITION
EAST CAMDEN, ARKANSAS

CONSTRUCTION DOCUMENTS

Revisions		
No.	Date	Description

Stamp

CROMWELL ARCHITECTS/ENGINEERS #5
ARKANSAS ENGINEER

REGISTERED PROFESSIONAL ENGINEER
NO. 12375
JAMIE L. GUIDRY
11-13-2024

Notes

1. CROMWELL ARCHITECTS ENGINEERS, INC. ALL RIGHTS RESERVED

2. THIS SHEET DESIGNED FOR COLOR PRINTING. CRITICAL INFORMATION MAY BE LOST WITH BLACK AND WHITE PRINTING.

Project Number 2024-116

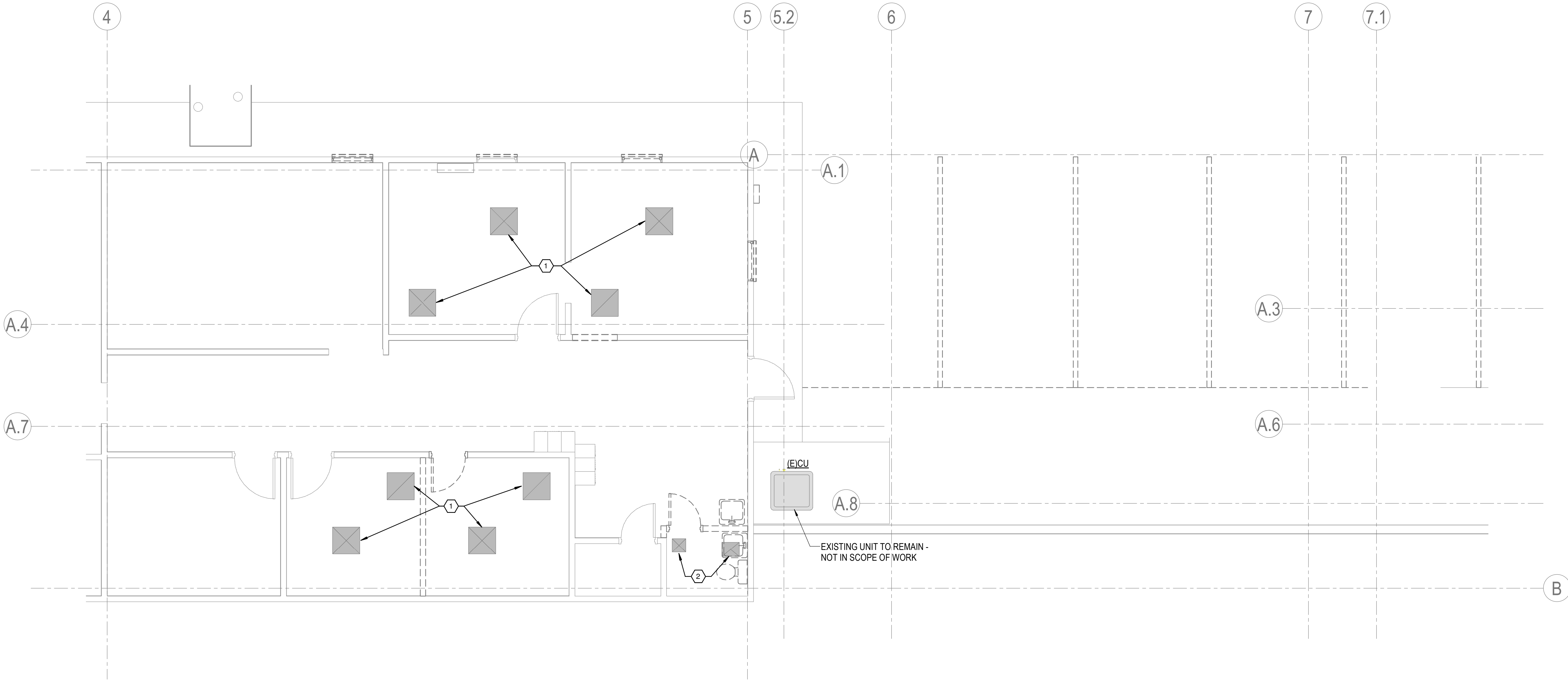
Issue Date 11-13-2024

Sheet Title

MECHANICAL DEMOLITION PLAN

Sheet Number

MD101



1 MECHANICAL DEMOLITION PLAN
1/4" = 1'-0"