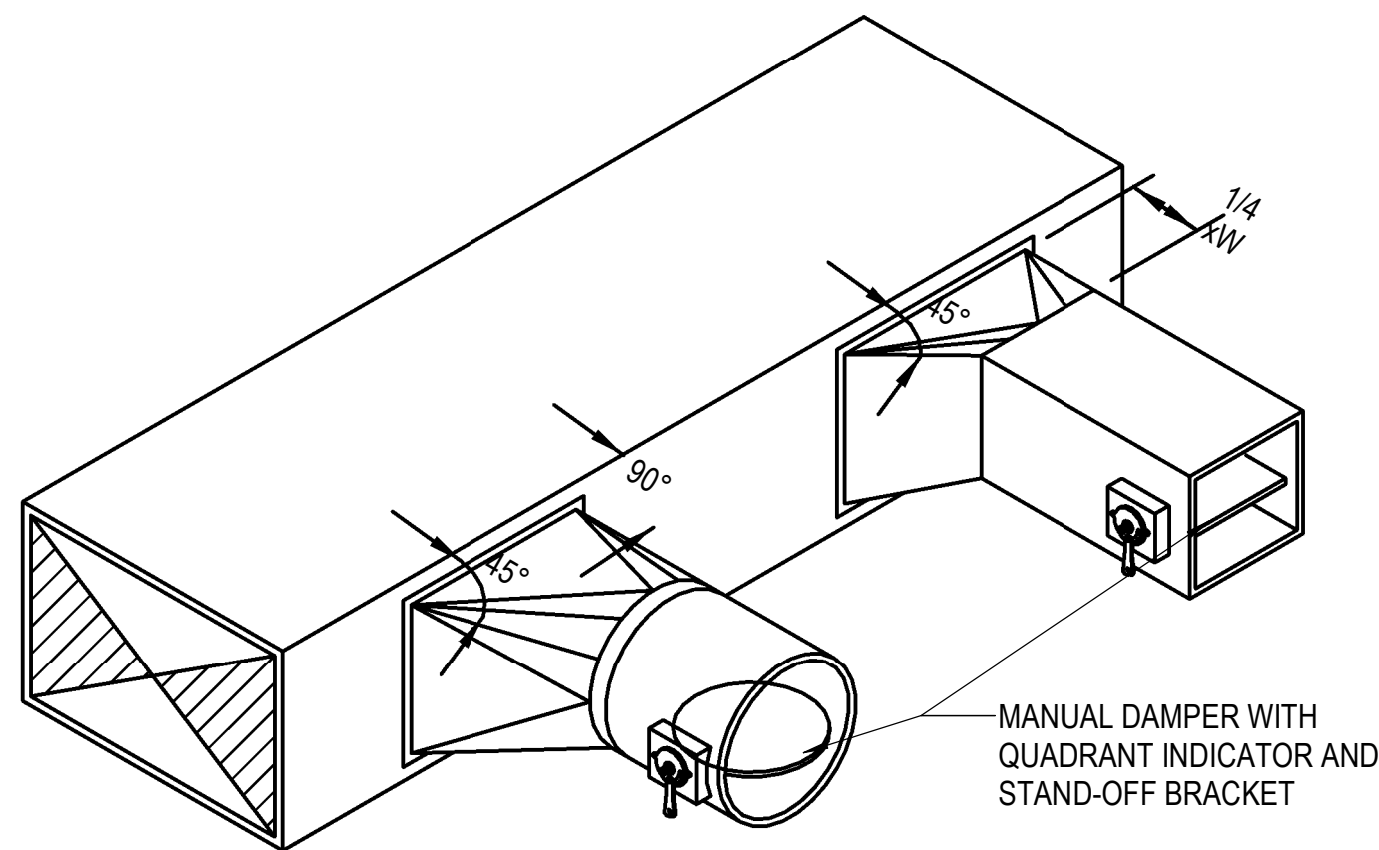
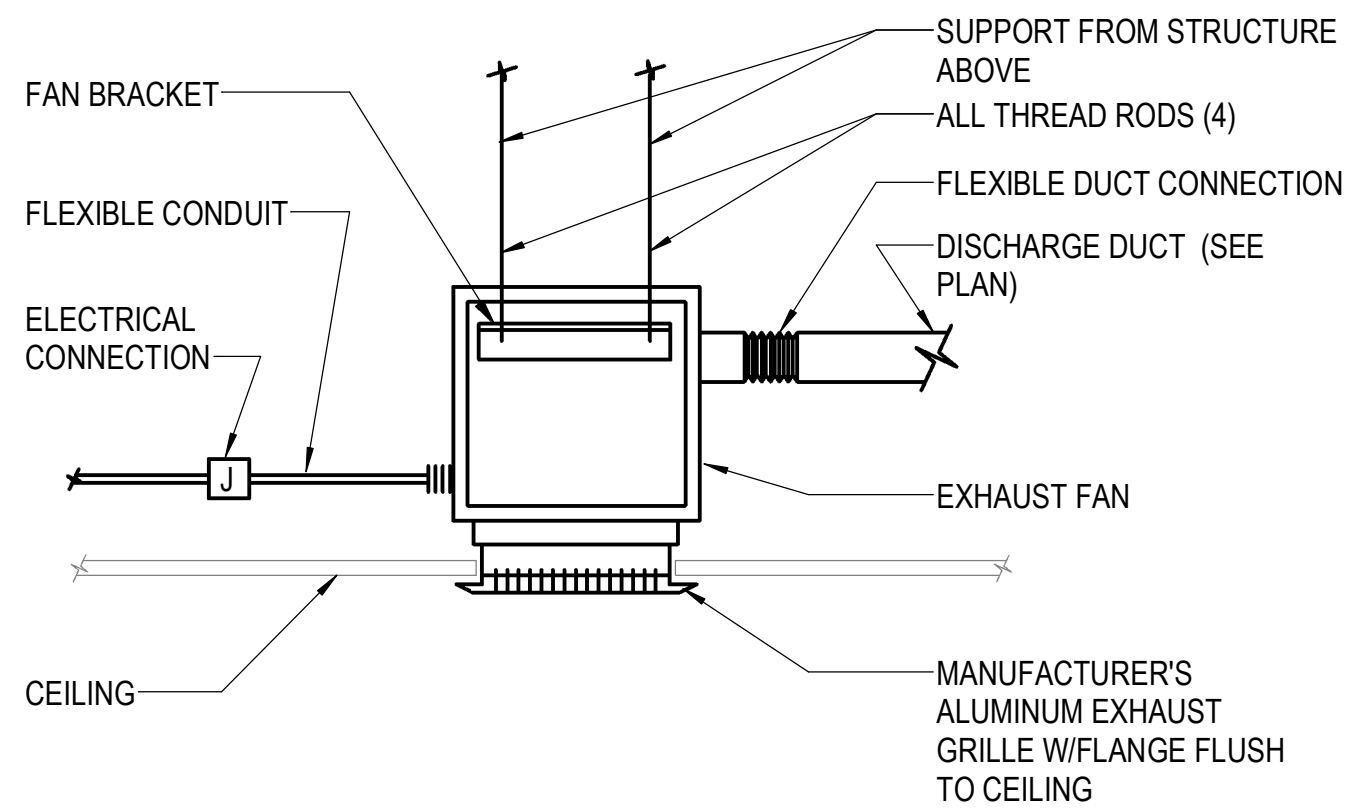


- NOTES:
1. ALL SHEET METAL DUCT JOINTS AND SEAMS SHALL BE THOROUGHLY COATED WITH A U.L. 181 COMPLIANT SEALANT, SMACNA SEAL CLASS A, HARDCAST OR EQUAL.
  2. COMBINATION VAPOR/WEATHER/UV BARRIER SHALL BE EQUAL TO POLYGUARD ALUMAGUARD RUBBERIZED BITUMEN FOIL FACED MEMBRANE WITH ASPHALT/ASPHALT LAP SEALS. INSTALL IN STRICT ACCORDANCE WITH THE MANUFACTURER'S INSTRUCTIONS.
  3. WHERE THE DUCTWORK PENETRATED THE BUILDING ENVELOPE, THE EXTERIOR WEATHERPROOF INSULATION SHALL EXTEND MIN. 6" INTO THE BUILDING INTERIOR BEFORE TRANSITIONING TO THE INTERIOR DUCT INSULATION SPECIFICATION.

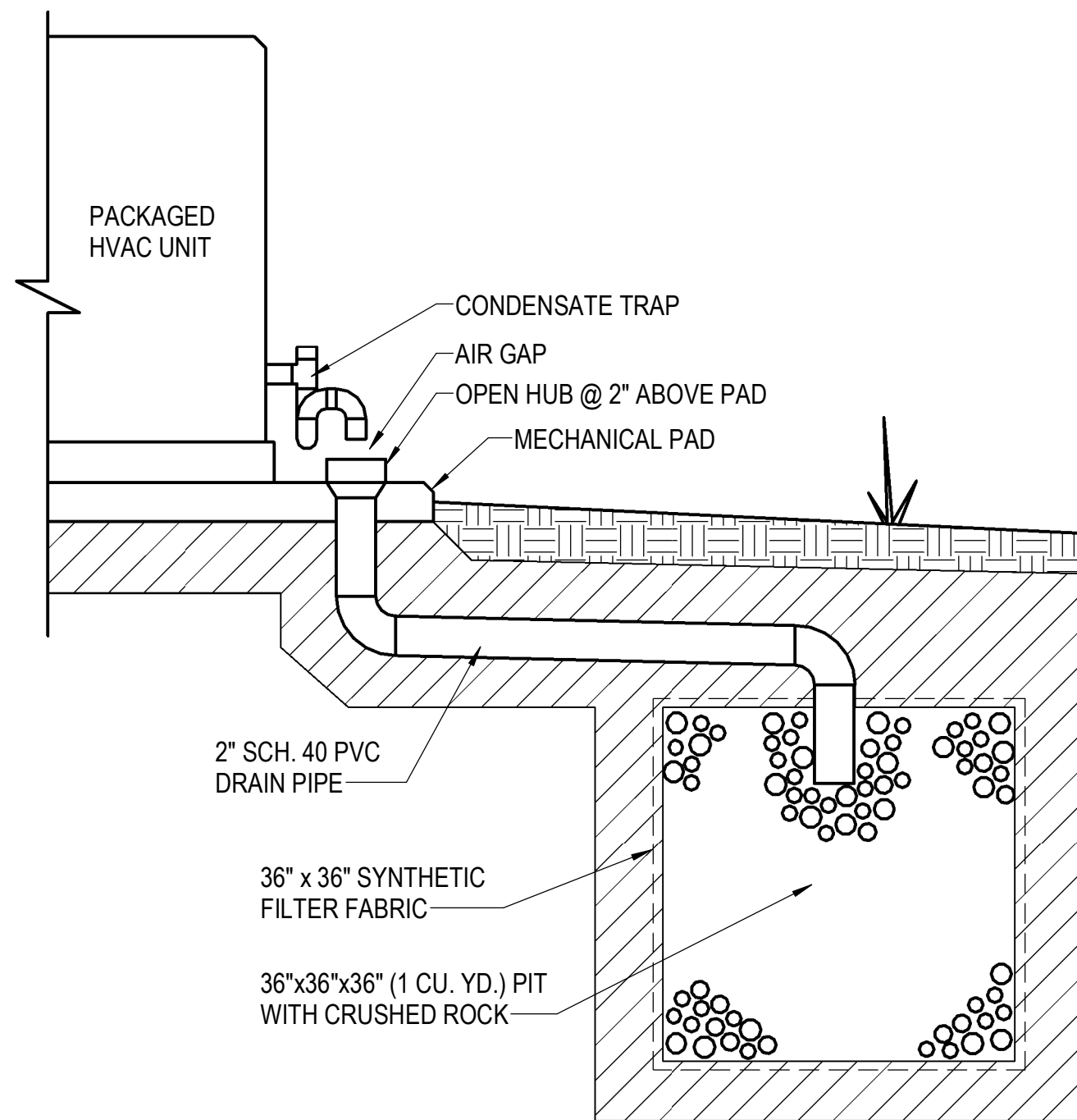
1 EXTERIOR DUCT INSULATION WEATHERPROOFING  
NOT TO SCALE



2 DUCT TAKEOFF  
NOT TO SCALE



3 CEILING MOUNTED EXHAUST FAN  
NOT TO SCALE

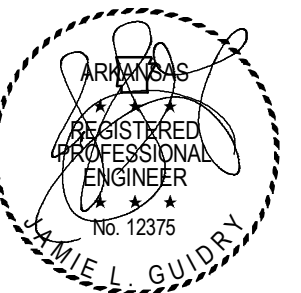
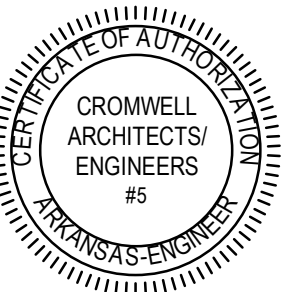


4 CONDENSATE DRAIN PIT  
NOT TO SCALE

CONSTRUCTION  
DOCUMENTS

Revisions		
No.	Date	Description

Stamp



11-13-2024

Notes

1. CROMWELL ARCHITECTS ENGINEERS, INC. ALL RIGHTS RESERVED
2. THIS SHEET DESIGNED FOR COLOR PRINTING. CRITICAL INFORMATION MAY BE LOST WITH BLACK AND WHITE PRINTING.

Project Number

2024-116

Issue Date

11-13-2024

Sheet Title

MECHANICAL DETAILS

Sheet Number

M-502