

GENERAL NOTES

1 REFER TO SHEET M-001 FOR MECHANICAL NOTES, ABBREVIATIONS, AND LEGEND SYMBOLS.

KEYED NOTES

- 1 REINSTALL THE AIR DEVICES IN THE NEW CEILING. EXTEND THE EXISTING BRANCH DUCTS AS REQUIRED TO CONNECT TO THE AIR DEVICES COMPLETE AND OPERATIVE. FIELD VERIFY THE EXISTING DUCT SIZES PRIOR TO BID.
- 2 REINSTALL THE EXISTING CEILING AIR DEVICE AND EXHAUST FAN IN THE NEW CEILING AND CONNECT TO THE EXISTING DUCTWORK COMPLETE AND OPERATIVE. CONNECT THE EXHAUST FAN TO THE EXISTING CONTROLS.
- 3 ROUTE THE TRAPPED CONDENSATE DRAIN TO A BELOW GRADE DRY WELL. REFER TO DETAIL.

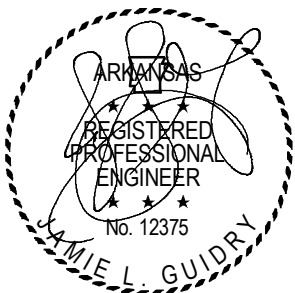
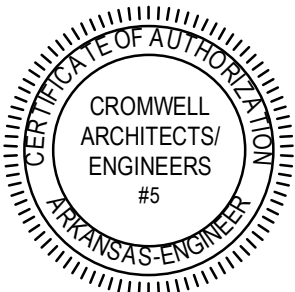
Design Phase

CONSTRUCTION
DOCUMENTS

Revisions

No.	Date	Description

Stamp



11-13-2024

Notes

1. CROMWELL ARCHITECTS ENGINEERS, INC. ALL RIGHTS RESERVED
2. THIS SHEET DESIGNED FOR COLOR PRINTING. CRITICAL INFORMATION MAY BE LOST WITH BLACK AND WHITE PRINTING.

Project Number

2024-116

Issue Date

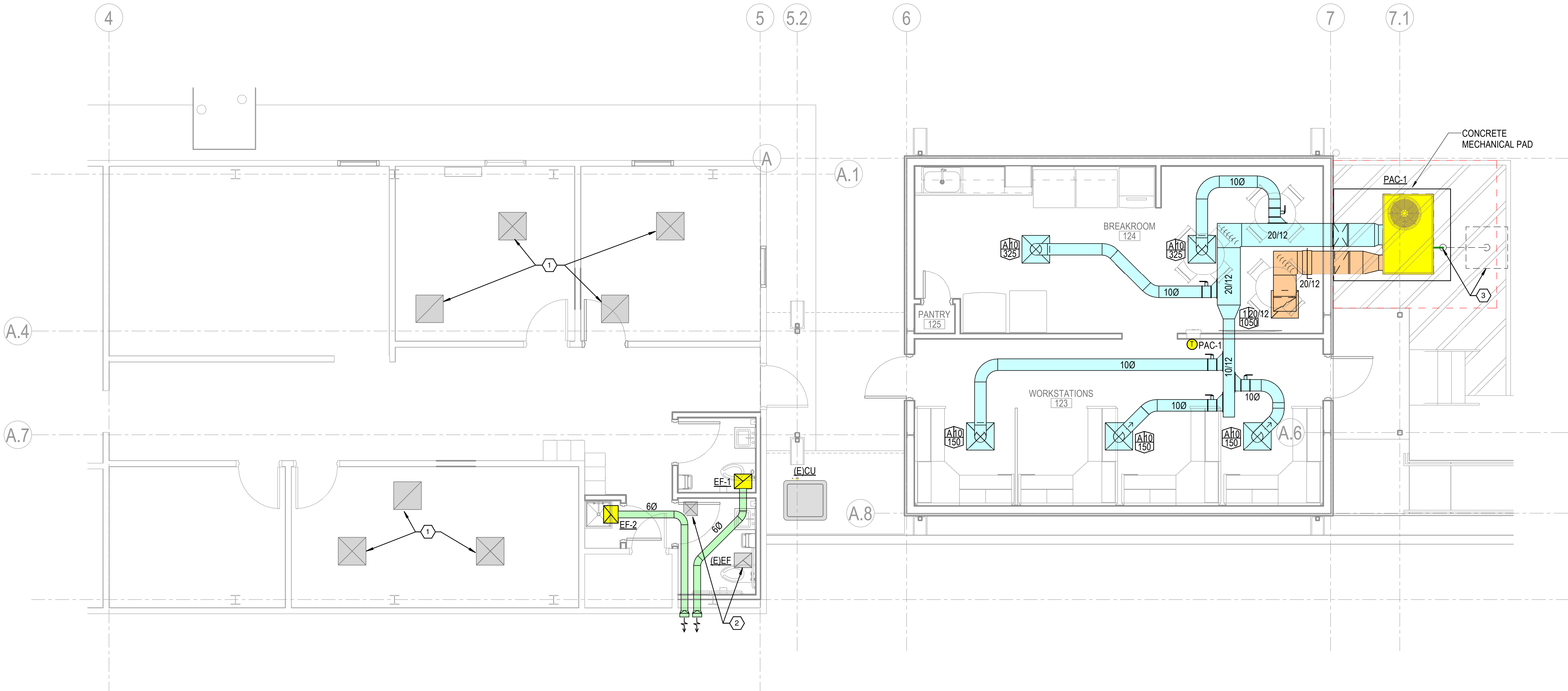
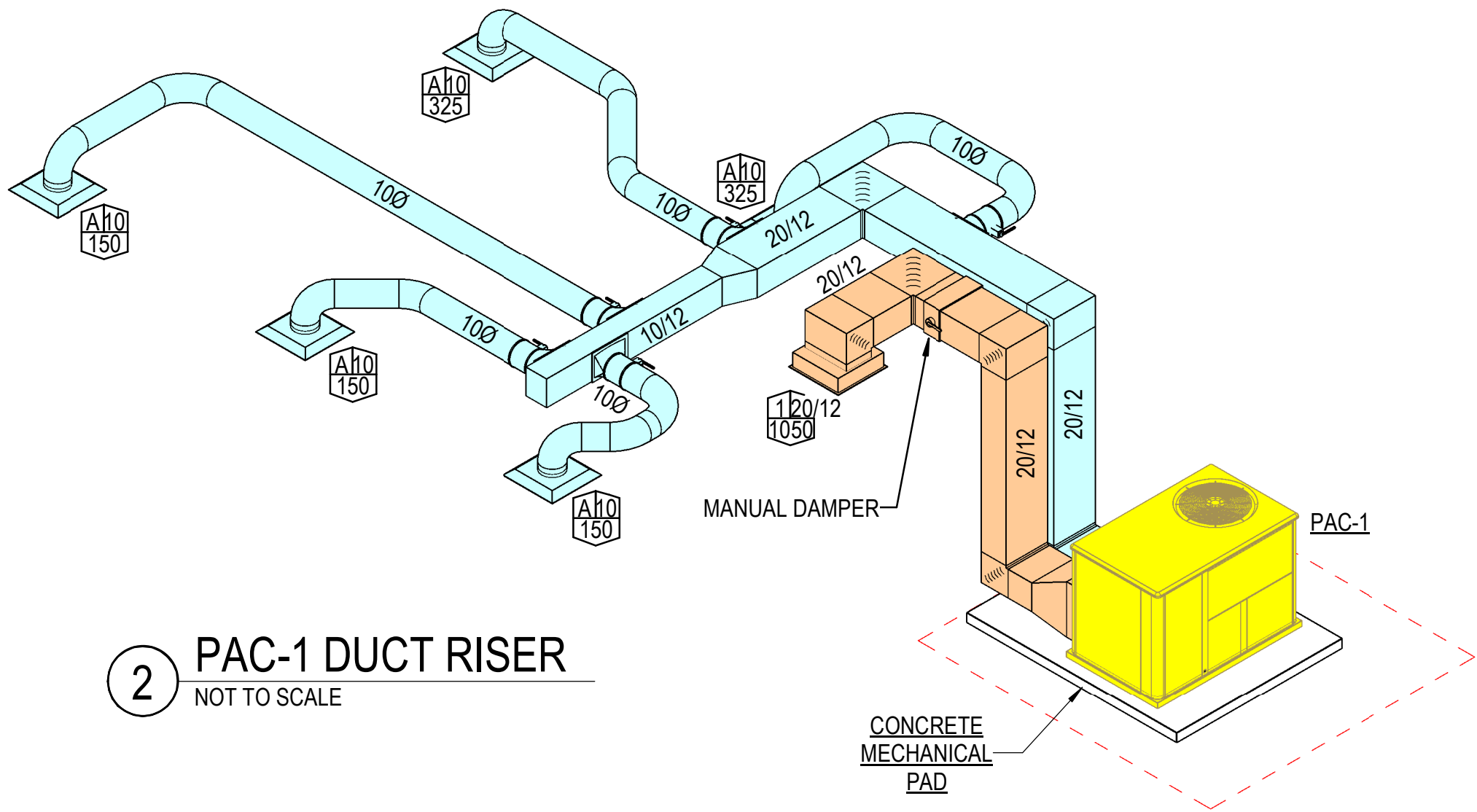
11-13-2024

Sheet Title

MECHANICAL PLAN

Sheet Number

M-101



1 MECHANICAL PLAN

1/4" = 1'-0" 0 2 4 8

