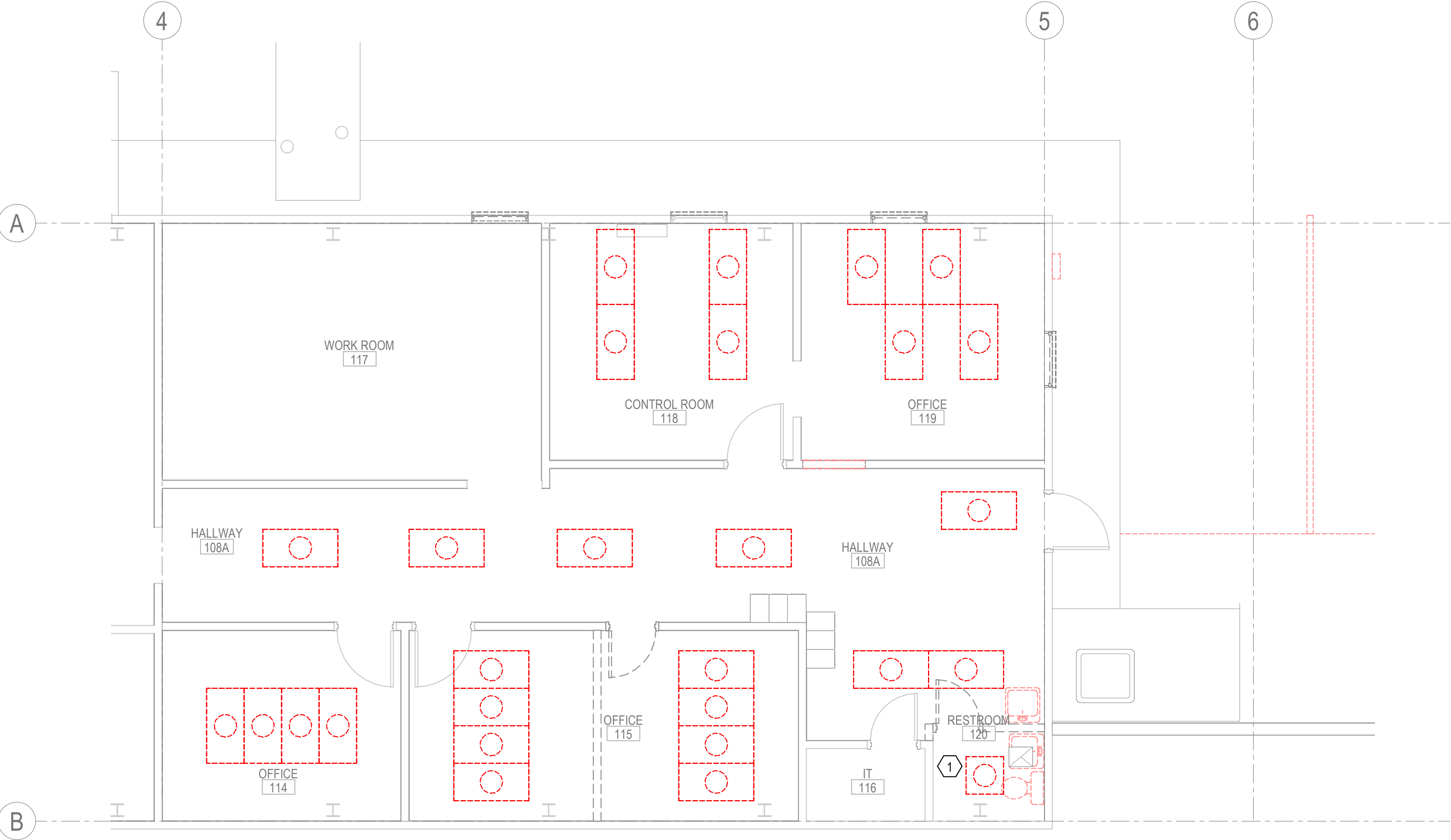


GENERAL NOTES:

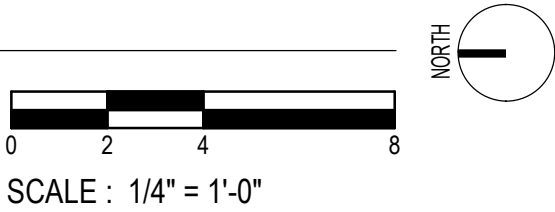
- A. INFORMATION REGARDING EXISTING CONDITIONS WAS TAKEN FROM RECORD DRAWINGS. CONTRACTORS SHALL VERIFY AND DOCUMENT EXISTING CONDITIONS PRIOR TO DEMOLITION.
- B. DISCONNECT DEVICES ON WALLS BEING DEMOLISHED. MODIFY CIRCUITS AS REQUIRED IF OTHER DEVICES ARE TO REMAIN ON THE CIRCUIT SO THAT THE DEVICES REMAIN OPERATIONAL OR REMOVE CONDUCTORS BACK TO PANELBOARD IF ALL DEVICES ARE BEING REMOVED ON A CIRCUIT, AND MARK CIRCUIT BREAKER AS SPARE. REMOVE PLENUM RATED DATA CABLING TO ABOVE NEAREST ACCESSIBLE CEILING, COIL AND TAG AS "FUTURE". REMOVE NON-PLENUM RATED DATA CABLING IN ITS ENTIRETY.
- C. DISCONNECT AND REMOVE ALL LIGHT FIXTURES AND LIGHTING CONTROLS IN ALL SPACES WHETHER SHOWN OR NOT. PROTECT AND RETAIN CIRCUITS FOR REUSE.
- D. COORDINATE WITH OTHER DISCIPLINES FOR COMPLETE DEMOLITION.
- E. RETURN LIGHT FIXTURES WHICH ARE REMOVED AND NOT REINSTALLED TO OWNER.

KEYED NOTES:

- 1 DEMO RECEPTACLE IF ANY. RETAIN CIRCUIT FOR NEW RECEPTACLES.



1 ELECTRICAL DEMOLITION PLAN  
1/4" = 1'-0"



Project

**AER JET**  
**ROCKETDYNE**

BUILDING A14  
TOILET RENOVATION &  
BREAKROOM ADDITION  
EAST CAMDEN, ARKANSAS

Design Phase

CONSTRUCTION  
DOCUMENTS

Revisions		
No.	Date	Description

Stamp

CROMWELL  
ARCHITECTS/  
ENGINEERS  
#5  
ARKANSAS-ENGINEER

STATE OF  
ARKANSAS  
REGISTERED  
PROFESSIONAL  
ENGINEER  
No. 9401  
ANGELA S. MCELROY

11-13-2024

- Notes
1. CROMWELL ARCHITECTS ENGINEERS, INC.  
ALL RIGHTS RESERVED
2. THIS SHEET DESIGNED FOR COLOR PRINTING.  
CRITICAL INFORMATION MAY BE LOST WITH  
BLACK AND WHITE PRINTING.

Project Number 2024-116  
Issue Date 11-13-2024  
Sheet Title

ELECTRICAL  
DEMOLITION PLAN

Sheet Number

ED101