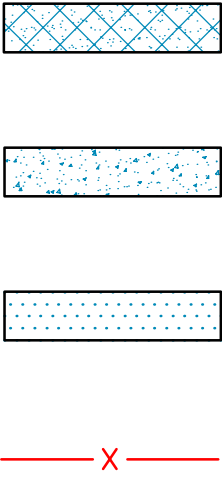


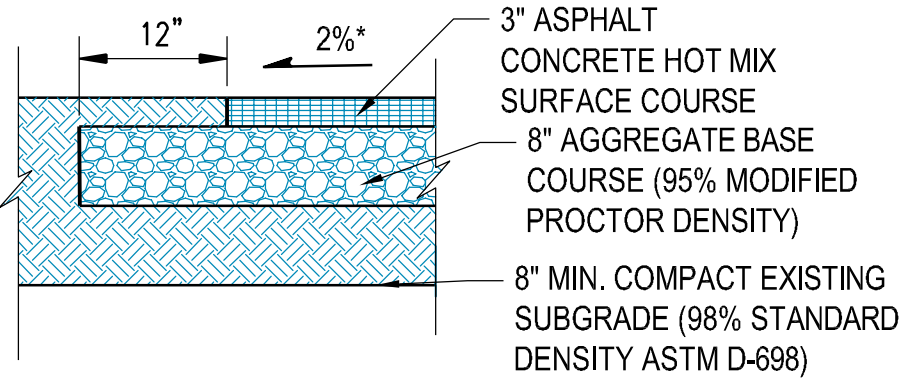
LEGEND

NEW CONCRETE WALK
NEW MECHANICAL PAD
NEW ASPHALT PAVING
RAILING



REFERENCE

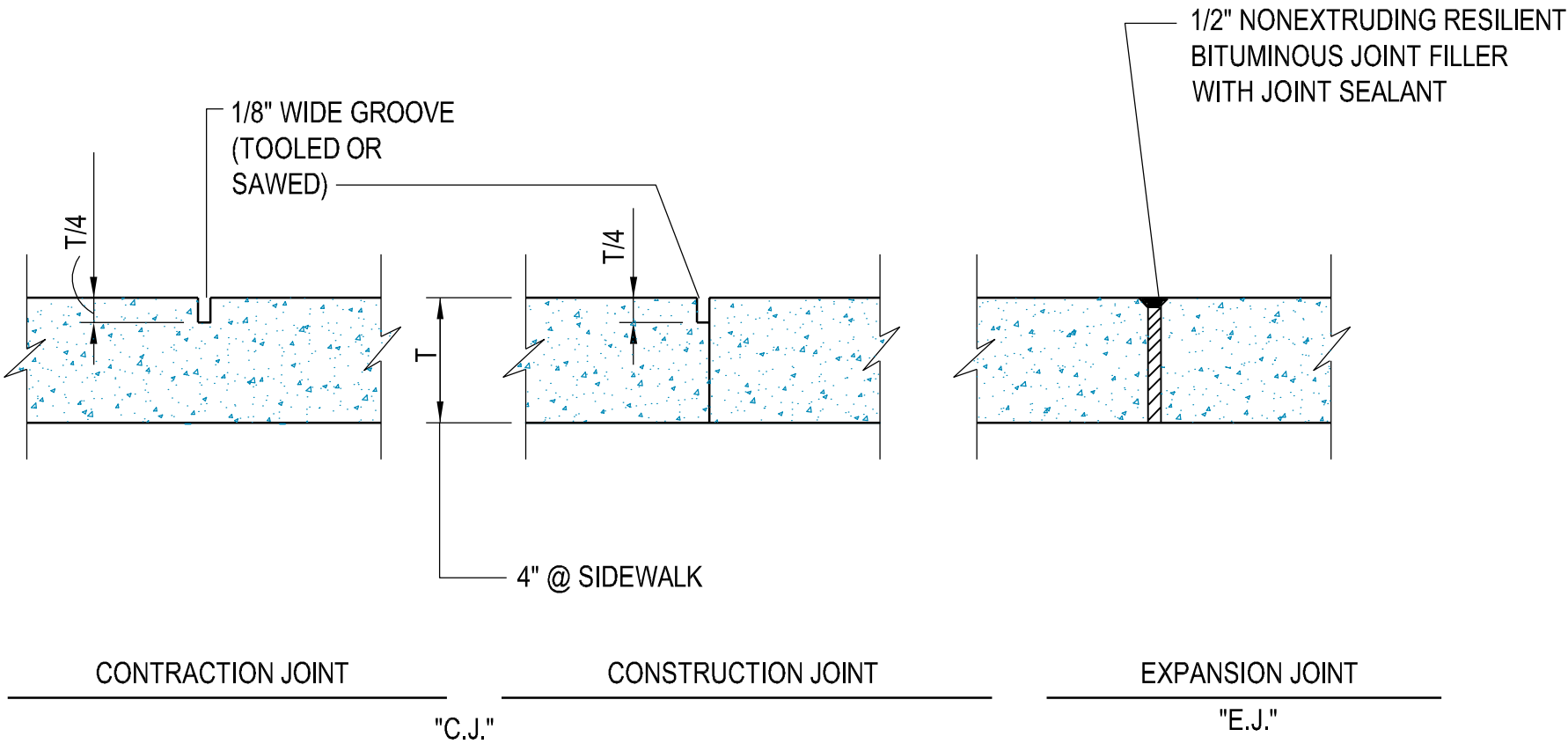
- 3 CS101
 - 2 CS101
 - 2&3 CG101
- SEE MECHANICAL-
INSTALL PER MANUFACTURE'S
INSTRUCTIONS



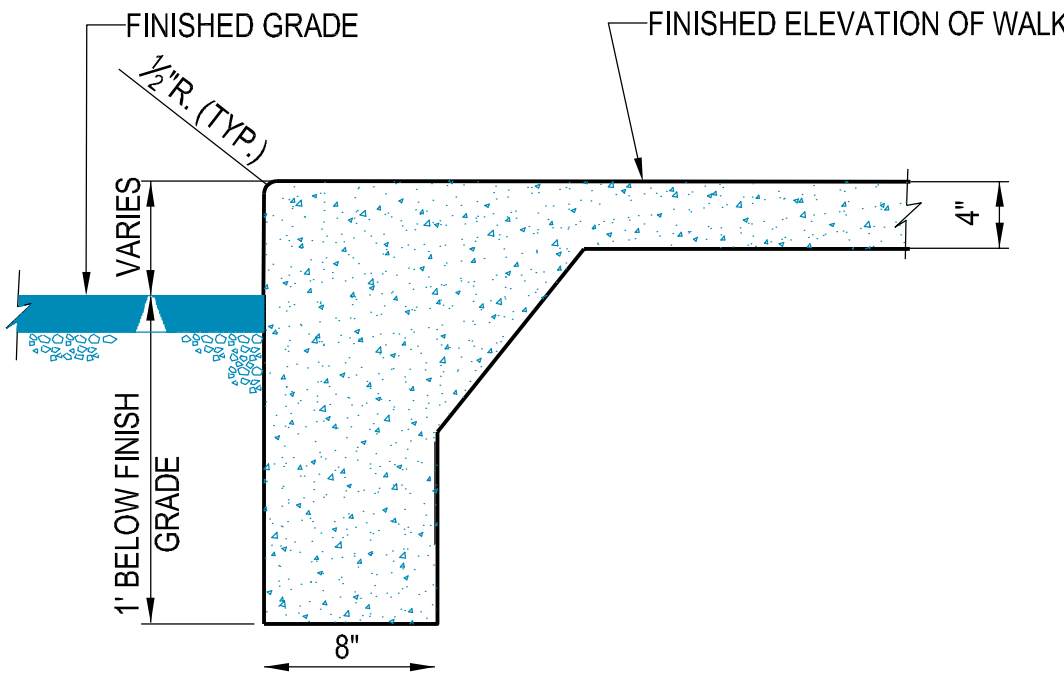
* PAVEMENT CROSS SLOPE SHALL BE 2% UNLESS SHOWN OTHERWISE

NOTE: WHERE FILL IS TO BE PLACED ON EXISTING SUBGRADE, FULL DEPTH COMPACTION OF SELECT MATERIAL IS REQUIRED (SEE EARTHWORK SECTION OF SPECS.)

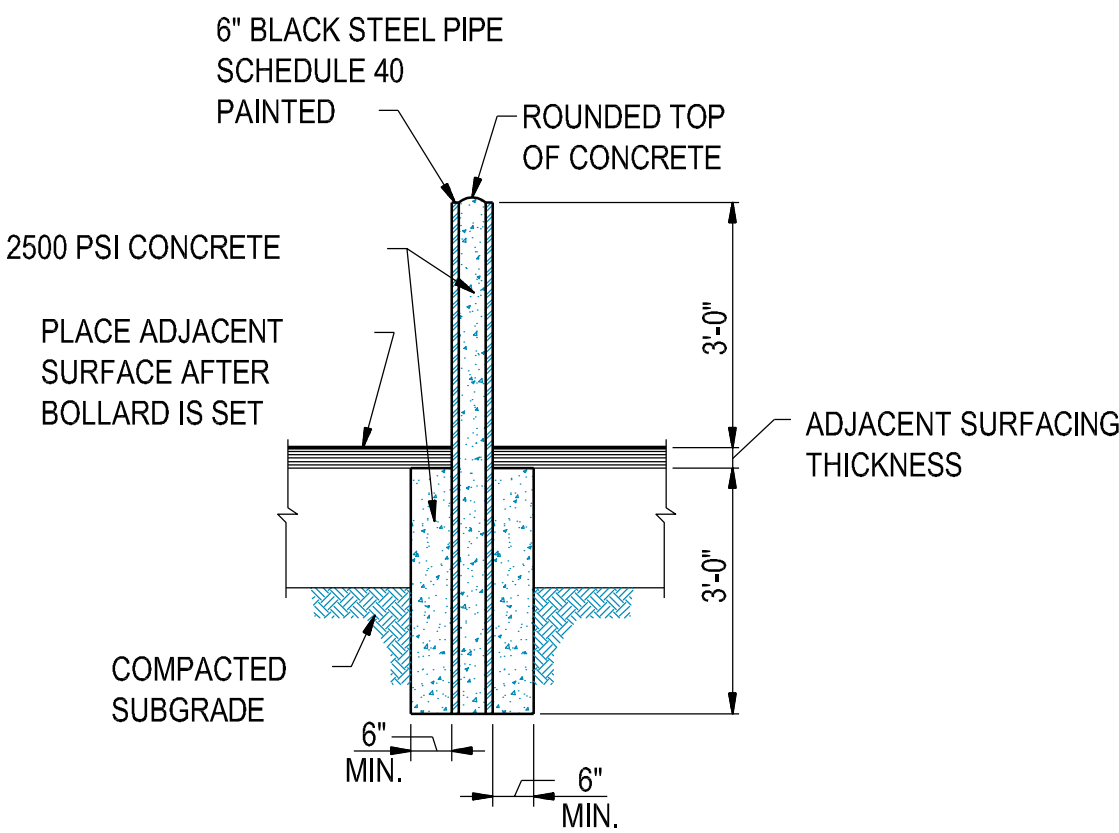
2 ASPHALT PAVING DESIGN SECTION
NOT TO SCALE



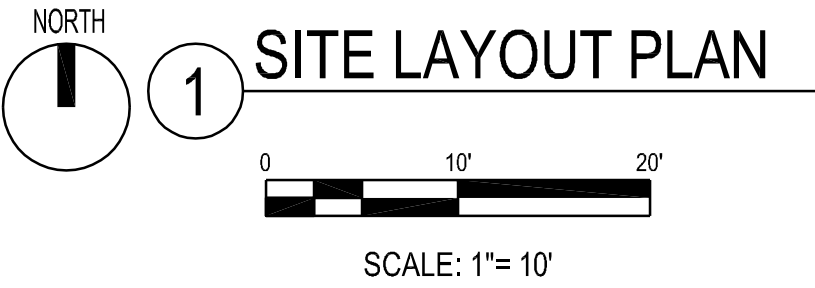
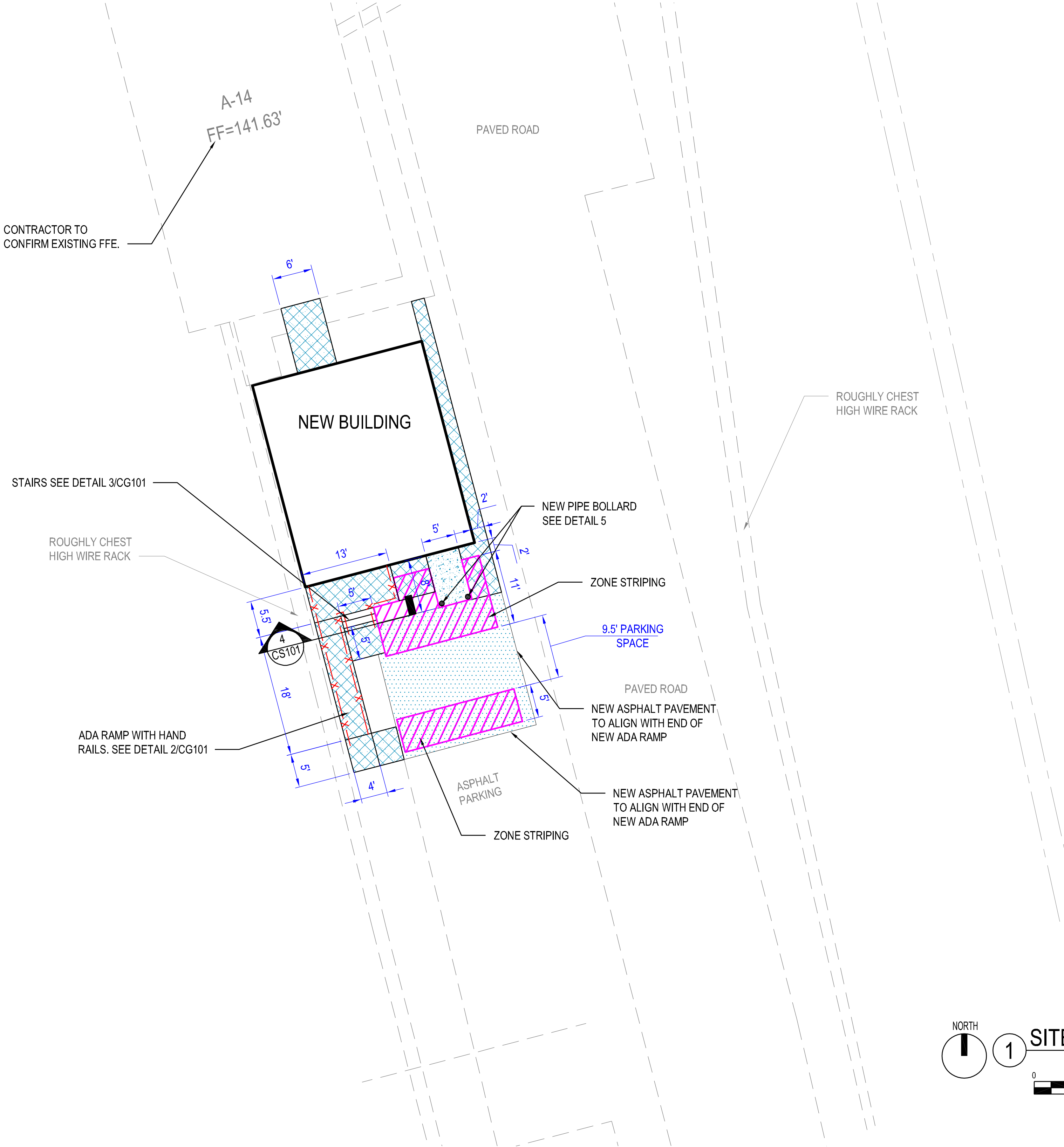
3 CONCRETE WALK DETAILS
NOT TO SCALE



4 TURN DOWN WALK DETAIL
NOT TO SCALE



5 PIPE BOLLARD DETAIL
NOT TO SCALE



1 SITE LAYOUT PLAN

Project

**AER JET
ROCKETDYNE**

BUILDING A14
TOILET RENOVATION &
BREAKROOM ADDITION
EAST CAMDEN, ARKANSAS

Design Phase

CONSTRUCTION
DOCUMENTS

| Revisions | | |
|-----------|------|-------------|
| No. | Date | Description |
| | | |
| | | |
| | | |
| | | |
| | | |
| | | |
| | | |
| | | |
| | | |

Stamp

CERTIFICATE OF AUTHORIZATION
CROMWELL ARCHITECTS/ENGINEERS #5
ARKANSAS-ENGINEER

STATE OF ARKANSAS
REGISTERED PROFESSIONAL ENGINEER
No. 15927
CHARLES WISE
11-13-2024

Notes

1. CROMWELL ARCHITECTS ENGINEERS, INC. ALL RIGHTS RESERVED

2. THIS SHEET DESIGNED FOR COLOR PRINTING. CRITICAL INFORMATION MAY BE LOST WITH BLACK AND WHITE PRINTING.

Project Number 2024-116

Issue Date 11-13-2024

Sheet Title

SITE LAYOUT PLAN

Sheet Number

CS101