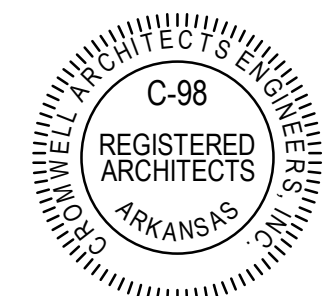


CONSTRUCTION  
DOCUMENTS

Revisions		
No.	Date	Description

Stamp



Notes

- CROMWELL ARCHITECTS ENGINEERS, INC. ALL RIGHTS RESERVED
- THIS SHEET DESIGNED FOR COLOR PRINTING. CRITICAL INFORMATION MAY BE LOST WITH BLACK AND WHITE PRINTING.

Project Number 2024-116

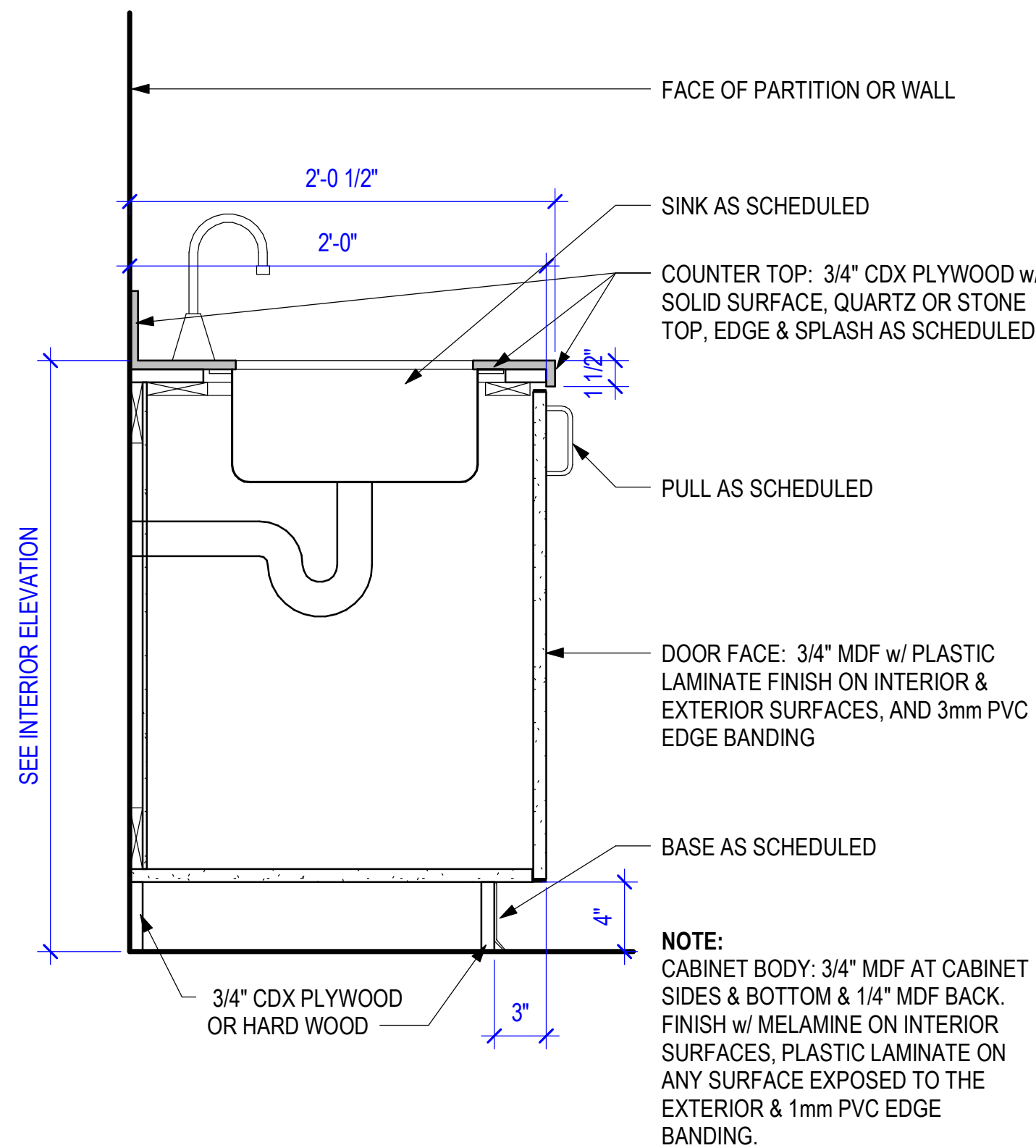
Issue Date 11-13-2024

Sheet Title

MILLWORK DETAILS

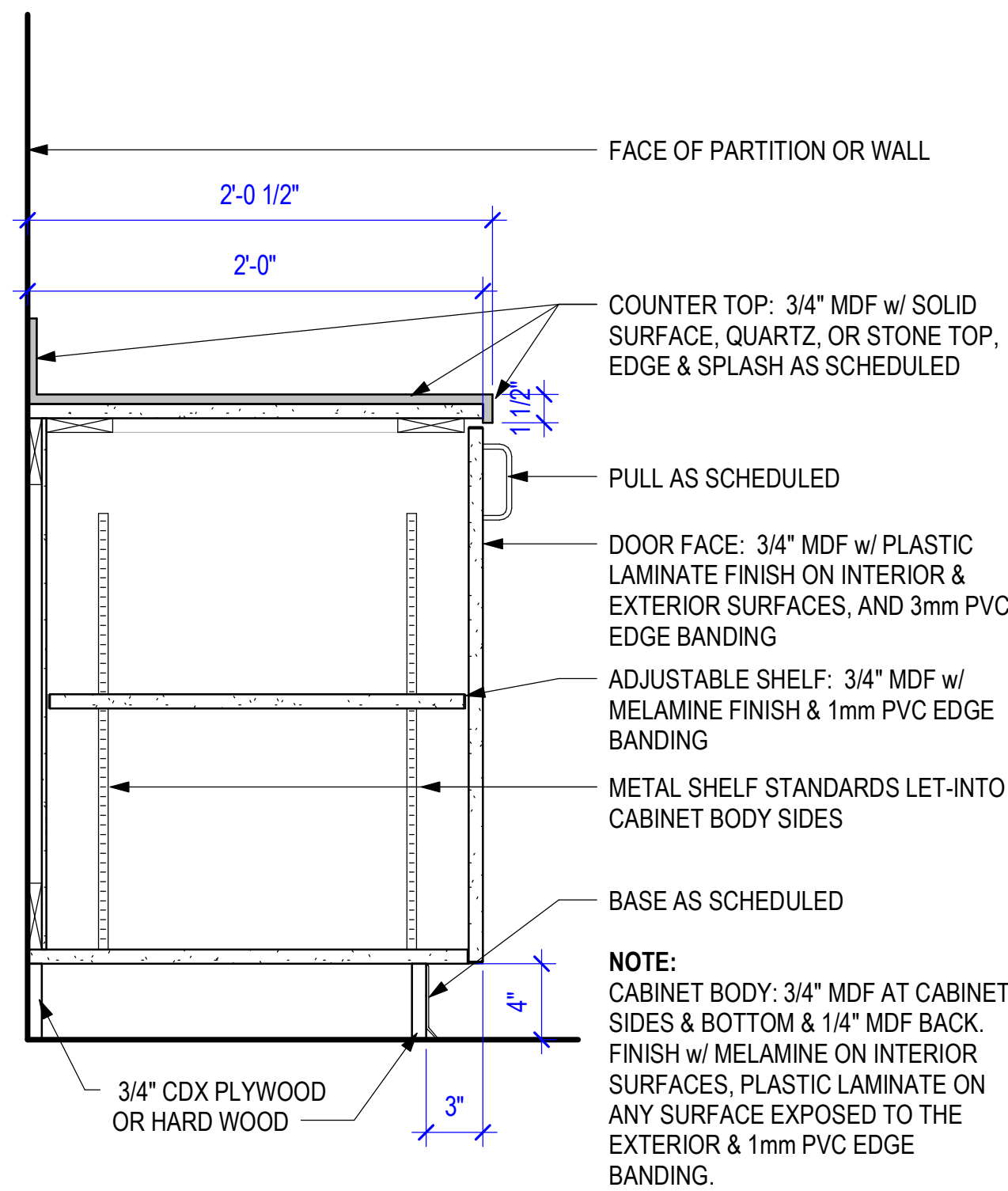
Sheet Number

A-701



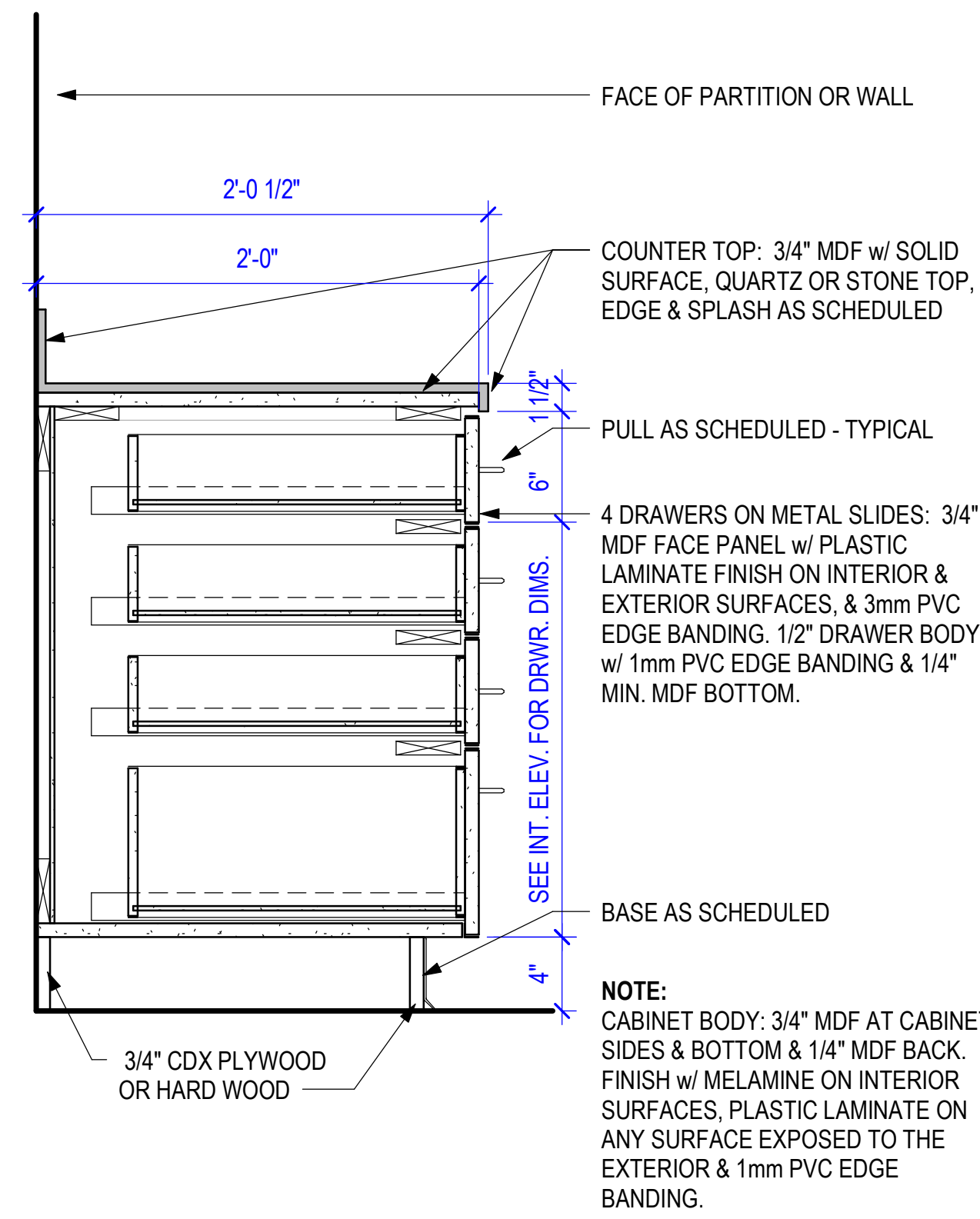
**SINK BASE CABINET w/ DOORS & SOLID SURFACE TOP**

1 SINK BASE CABINET, SOLID SURFACE w/ DOORS  
1 1/2" = 1'-0"



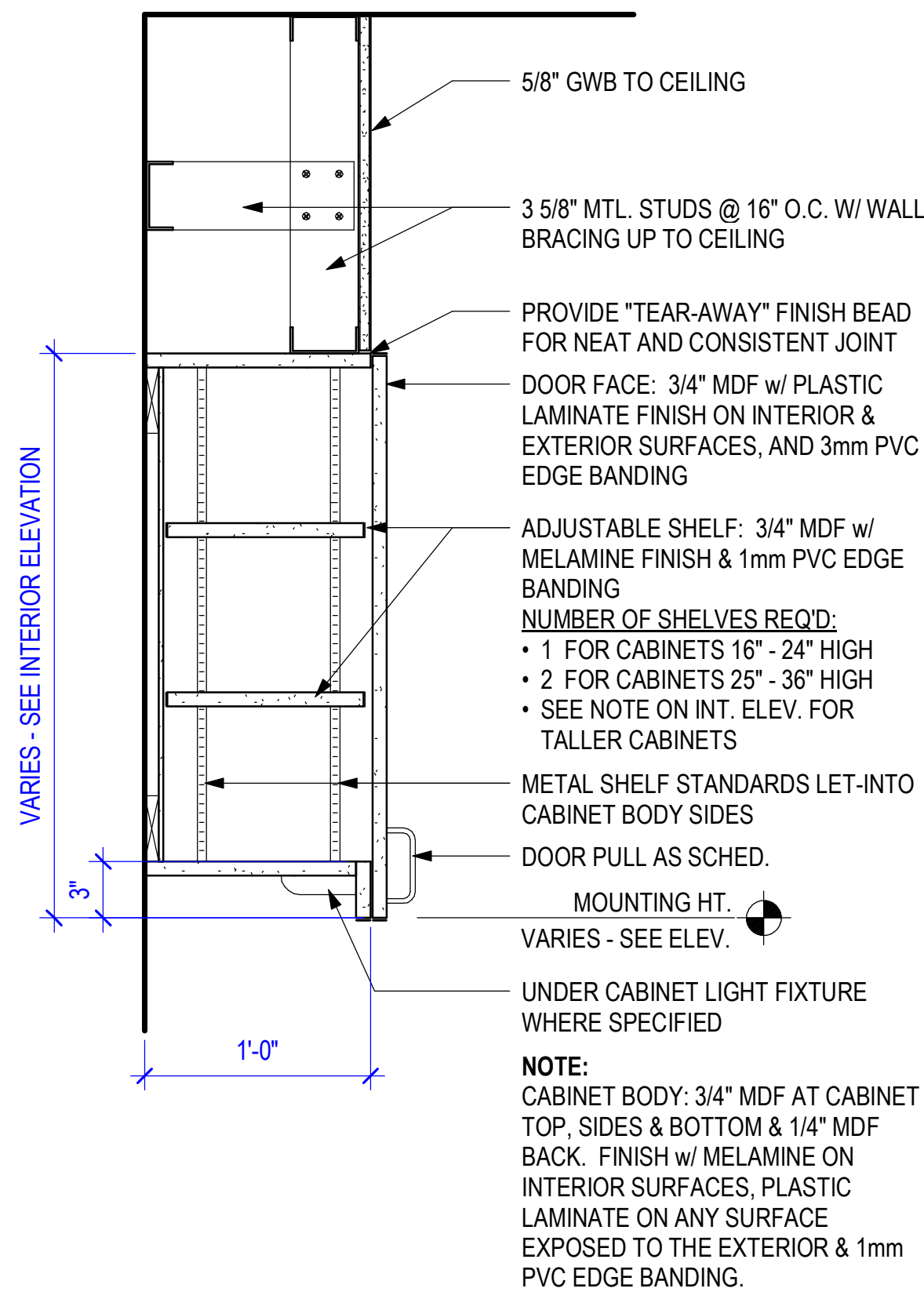
**BASE CABINET w/ DOORS & SOLID SURFACE TOP**

2 BASE CABINET, SOLID SURFACE w/ DOORS  
1 1/2" = 1'-0"



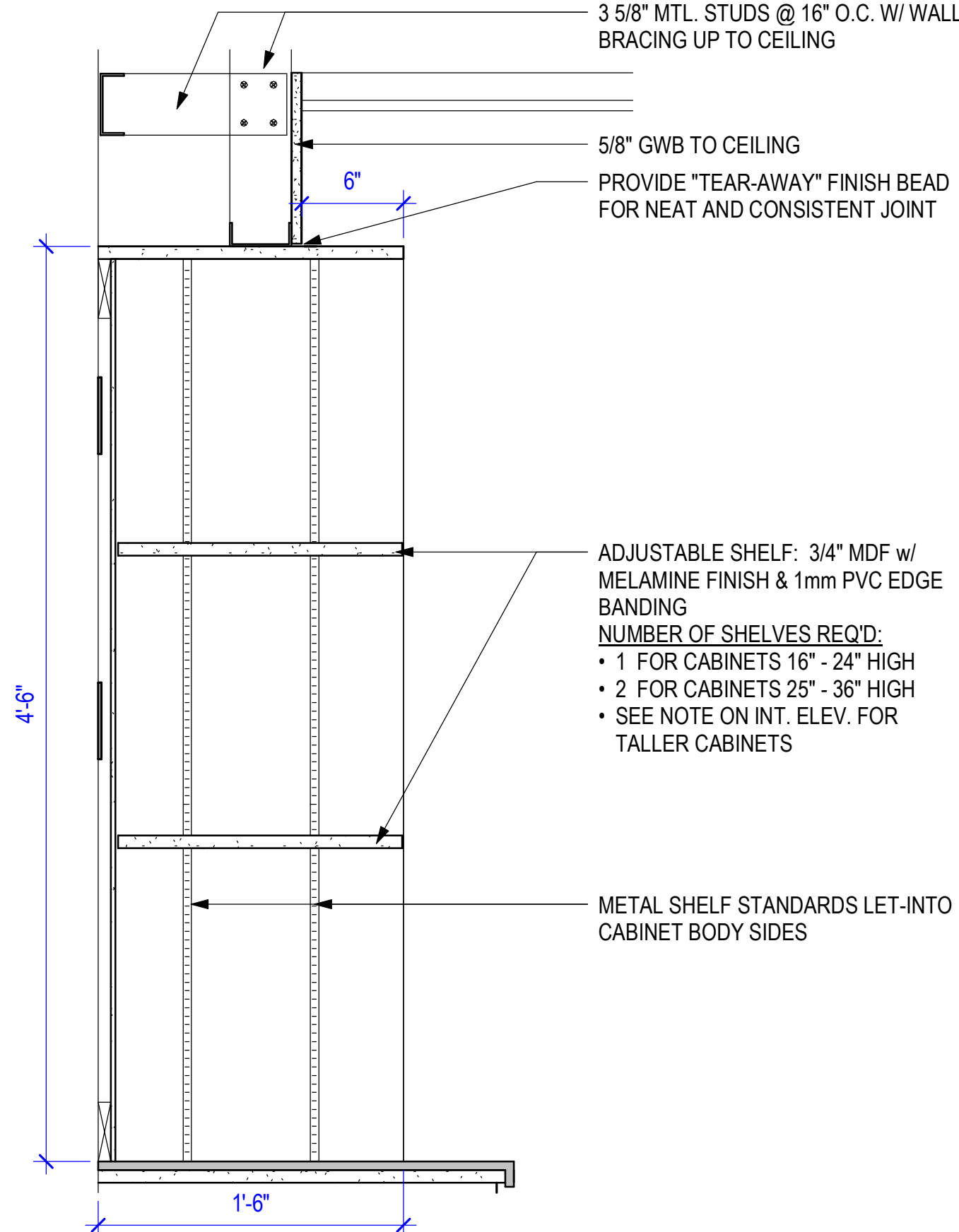
**BASE CABINET w/ 4 DRWRS & SOLID SURFACE TOP**

3 BASE CABINET, SOLID SURFACE w/ 4 DRWRS  
1 1/2" = 1'-0"

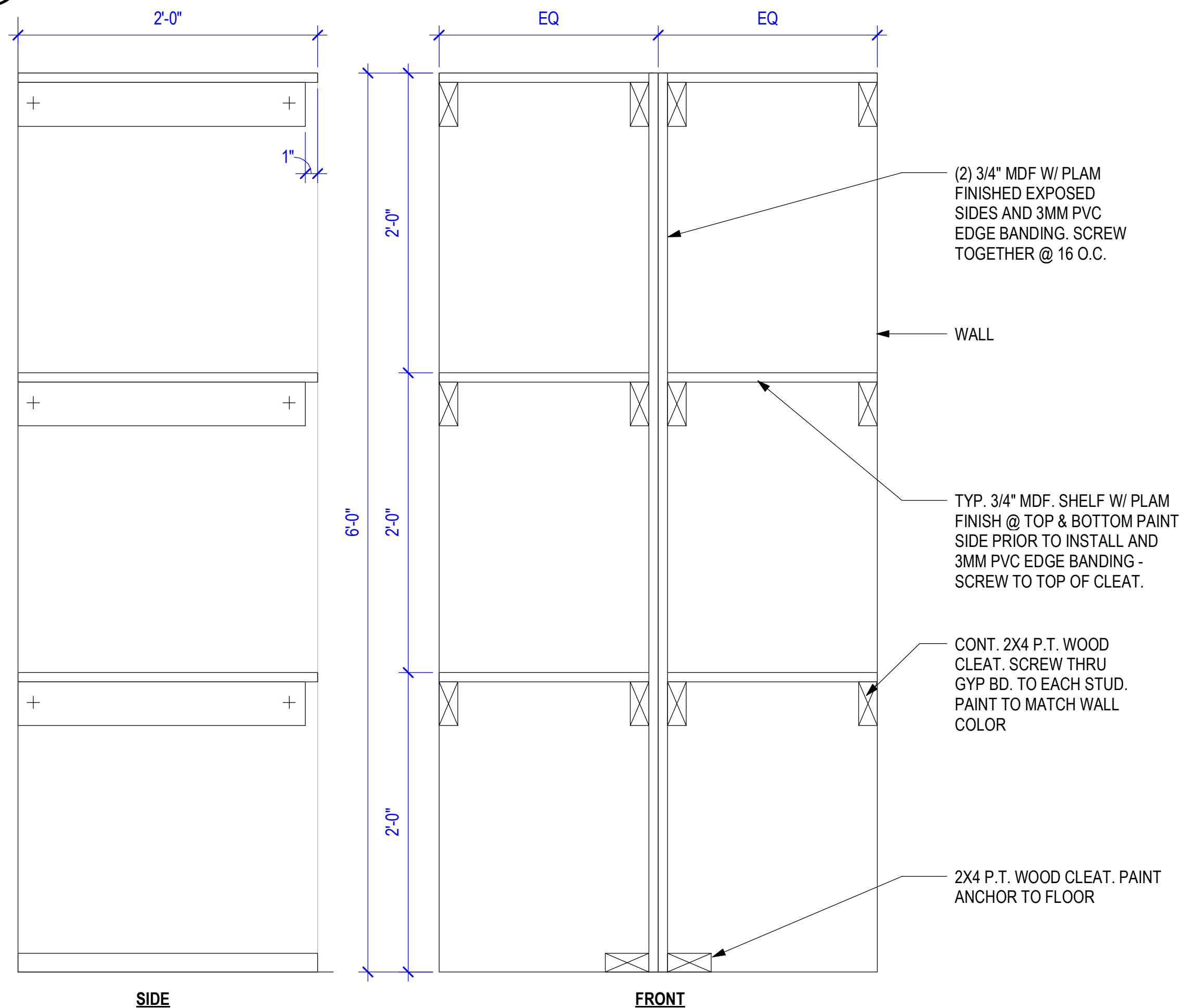


**UPPER CABINET, LAMINATE w/ DOORS & GYPSUM BOARD CLOSURE PANEL**

4 UPPER CABINET, LAMINATE w/ DOOR  
1 1/2" = 1'-0"



5 UPPER CABINET, SHELVING  
1 1/2" = 1'-0"



6 FIXED SHELVES  
1 1/2" = 1'-0"

