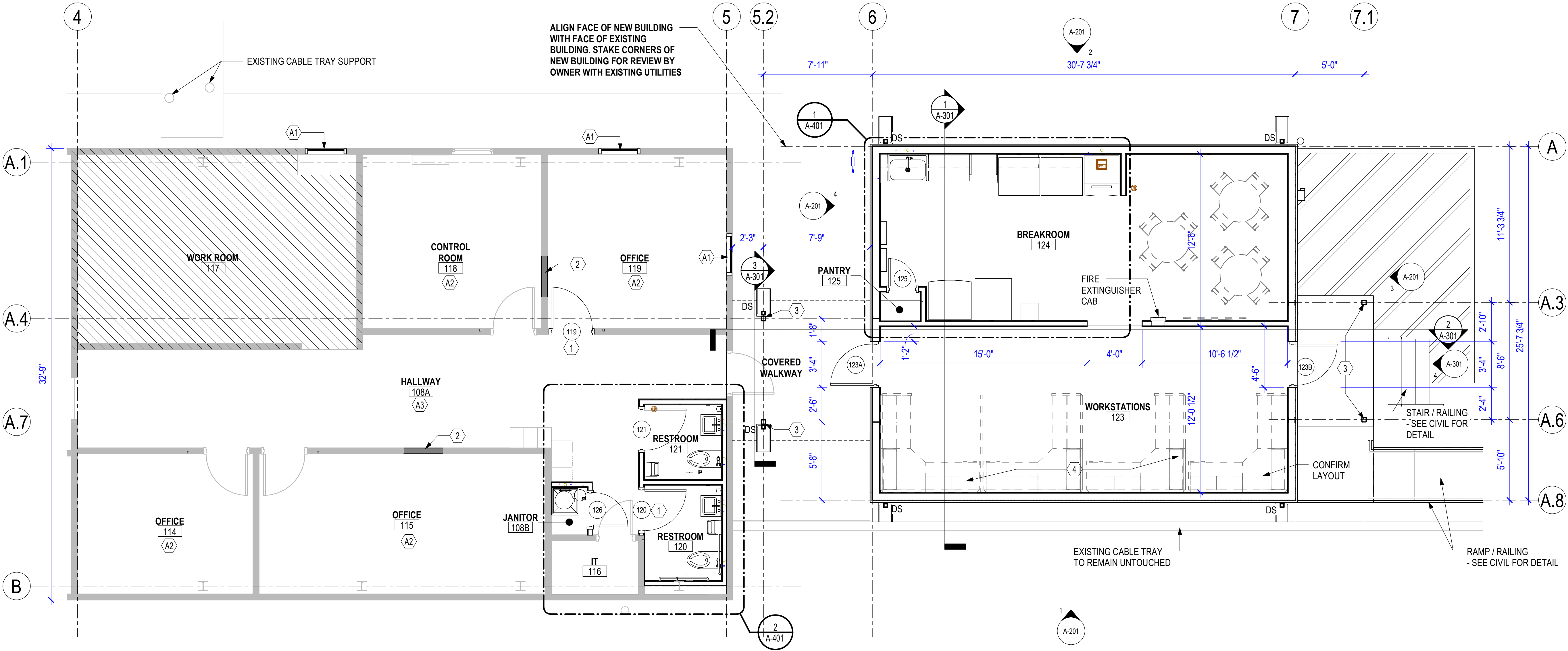


BASED BID - KEYED NOTES	
#	DESCRIPTION
1	NEW DOOR & FRAME IN EXISTING WALL
2	INFILL DOOR OPENING, MATCH ADJACENT EXISTING MATERIAL, TEXTURE AND FINISH
3	NEW CANOPY COLUMNS
4	OFOI CUBICES (DASHED)

CONTRACTOR TO PROVIDE CUBICLES BY SKUTCHI. AEROJET STANDARD W/ DRIFTWOOD COUNTERTOPS & SHELVES

CONTACT:
JAMIE FERRARO
JAMIEF@SKUTCHI.COM
(843) 410-5446

ALTERNATE BID - KEYED NOTES	
#	DESCRIPTION
A1	PROVIDE NEW 35"X51" ALUMN FRAMED (FIXED) WINDOWS W/ INSULATED GLAZING - SEE WINDOW DETAIL A-520
A2	NEW EPOXY COATING WITH FLAKE AND 4" RUBBER BASE
A3	PATCHING NEW EPOXY COATING WITH FLAKE AND 4" RUBBER BASE



1 FLOOR PLAN
1/4" = 1'-0"

SYMBOLS LEGEND

- EXISTING TO REMAIN (GREY)
- NEW CONSTRCUTION (BLACK)

NO WORK REQD. IN THIS AREA. COORDINATE ACCESS OF THESE AREAS W/ OWNER FOR UTILITY CONNECTIONS IF REQD. REFER TO MEP DRAWINGS.

Project
**AEROJET
ROCKETDYNE**
BUILDING A14
TOILET RENOVATION &
BREAKROOM ADDITION
EAST CAMDEN, ARKANSAS

CONSTRUCTION DOCUMENTS

Revisions		
No.	Date	Description

Stamp

CROMWELL ARCHITECTS ENGINEERS, INC.
C-98
REGISTERED ARCHITECTS
ARKANSAS

REGISTERED ARCHITECT
DANIEL K. FOWLER
No. 3339
ARKANSAS
11-13-2024

Notes

1. CROMWELL ARCHITECTS ENGINEERS, INC. ALL RIGHTS RESERVED

2. THIS SHEET DESIGNED FOR COLOR PRINTING. CRITICAL INFORMATION MAY BE LOST WITH BLACK AND WHITE PRINTING.

Project Number 2024-116
Issue Date 11-13-2024
Sheet Title

FLOOR PLAN
Sheet Number

A-101