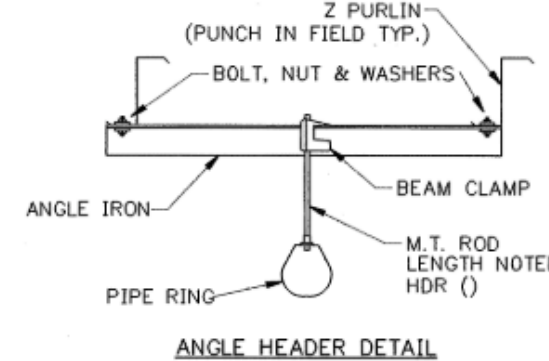
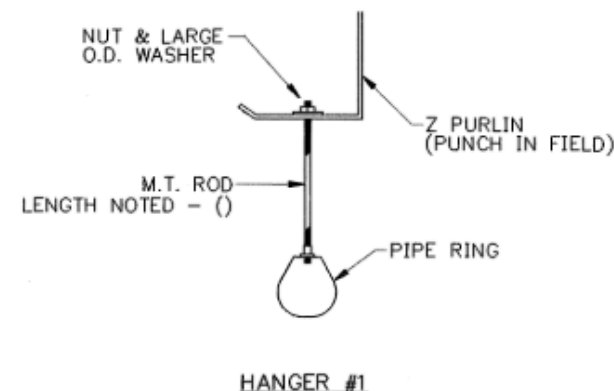
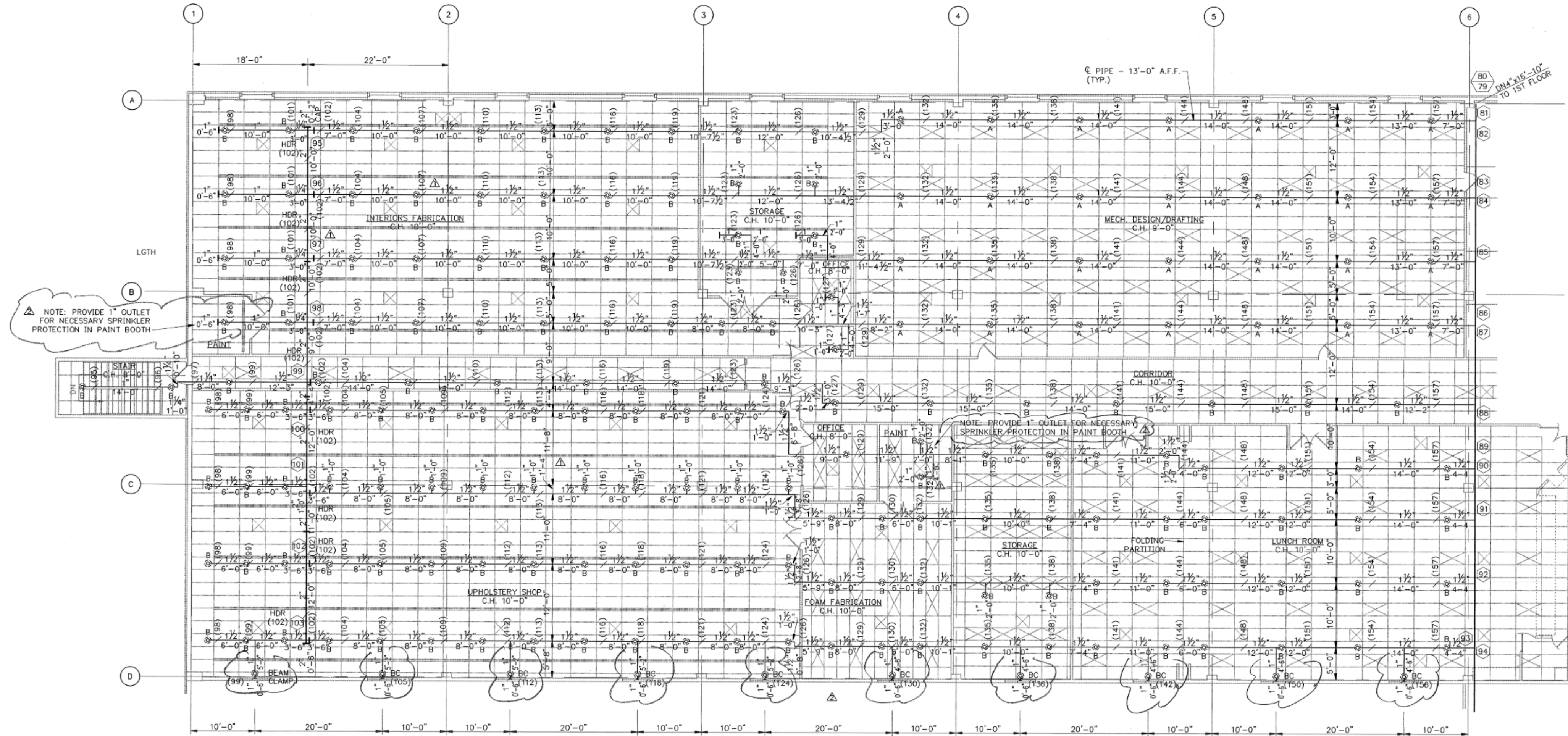


F.1 BUILDING 200 - SECOND FLOOR - AREA A - SPRINKLER SYSTEM LAYOUT

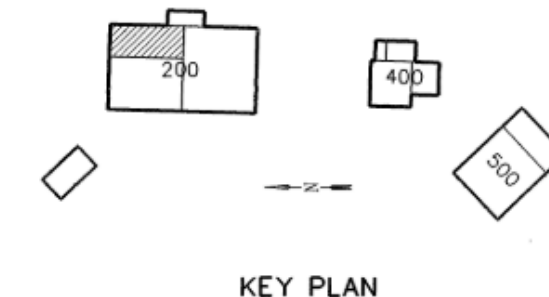


HGR #	PIPE SIZE	ANGLE IRON
2	2"	2"x2"x3/8"x5'-6"
3	4"	3"x2 1/2"x3/8"x5'-6"

SYM.	SPRINKLER DESCRIPTION	QTY.
⊗	1/2" ORIFICE CHROME PENDENT, 165°	194
W/	1/8" CHROME ESCUTCHEON, K=5.6	

DROP SCHEDULE	
MARK	LENGTH
NO LETTER	1" x 5'-6"
A	1" x 4'-6"
B	1" x 3'-6"

ALL DROPS HAVE 1"x1/2" REDUCER.  
DROPS ARE NOT PRE-CUT.



BUILDING 200  
2nd FLOOR - AREA "A"  
SPRINKLER SYSTEM LAYOUT

Arkansas  
Modification  
Center  
LITTLE ROCK, ARKANSAS



Garver + Garver, P.A.  
LITTLE ROCK, ARKANSAS

BY	DATE
MTA	7 NOV 90
DM	14 NOV 90
ELH	16 NOV 90
SCALE: 1/8" = 1'-0"	
SHEET NO.	FD-9

FOR REFERENCE ONLY

REV	DATE	DESCRIPTION

BILL AND HILARY CLINTON  
NATIONAL AIRPORT  
LITTLE ROCK, AR 72206

BLDG 200  
REFERENCE  
DRAWING

JOB NO.: 21A10111  
DATE: MAY 2025  
DESIGNED BY: JCF  
DRAWN BY: JCF

DRAWING NUMBER  
**R-06**

