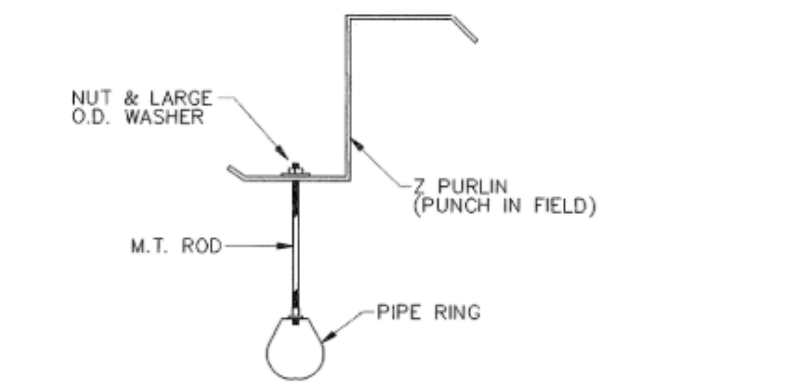
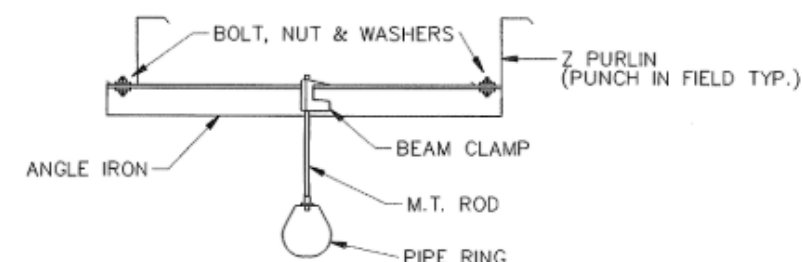


(F.1) BUILDING 200 – HANGAR #1 – SPRINKLER SYSTEM LAYOUT



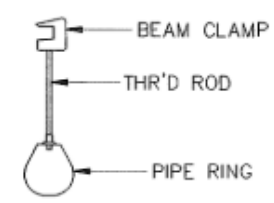
HANGER #1

NOTE:  
ALL BRANCH LINE HANGERS ARE #1x6"  
UNLESS NOTED OTHERWISE



HANGERS #2-#5

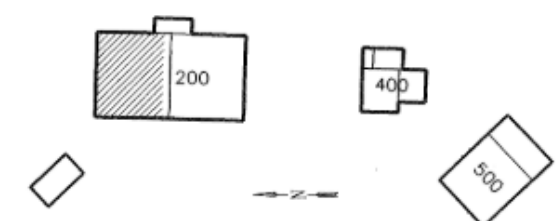
HGR#	PIPE SIZE	ANGLE IRON
2	3"	2 1/2" x 2 1/2" x 1/4" x 5'-6"
3	4"	3" x 2 1/2" x 3/16" x 5'-6"
4	6"	3" x 3" x 5/16" x 5'-6"
5	8"	3" x 2 1/2" x 3/8" x 5'-6"



HANGER #6

SPRINKLER LEGEND

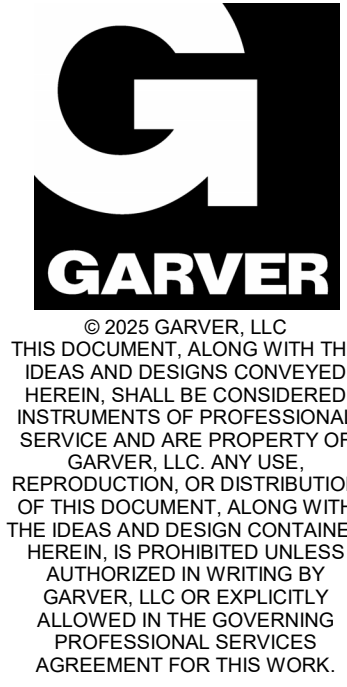
SYMBOL	DESCRIPTION	QTY
○	½" BRASS PENDENT, OPEN, K=5.6	374
●	½" BRASS SIDEWALL, OPEN, K=5.6	12



### KEY PLAN

ISSUE FOR CONSTR. 12-18-90

DESIGNED	BY	DATE
DRAWN	MTA	13 SEP 90
CHECKED	MBD	14 SEP 90
	RLH	14 SEP 90
SCALE: 1/8" = 1'-0"		
SHEET NO. <b>FP-5# 17</b>		
<b>Garver + Garver, P.A.</b> Little Rock, Arkansas		
		
		
<b>Arkansas Modification Center</b> LITTLE ROCK, ARKANSAS		
BUILDING 200 HANGAR #1 SPRINKLER SYSTEM LAYOUT		
		



FOR REFERENCE ONLY

[illegible]

**BILL AND HILARY CLINTON**  
**NATIONAL AIRPORT**  
LITTLE ROCK, AR 72206

## LIT FIRE SUPPRESSION IMPROVEMENTS

BLDG 200  
REFERENCE  
DRAWING

JOB NO.: 21A10111  
DATE: MAY 2025  
DESIGNED BY: JCF  
DRAWN BY: JCF

BAR IS ONE INCH ON  
ORIGINAL DRAWING  
0 1"  
IF NOT ONE INCH ON THIS SHEET  
ADJUST SCALES ACCORDINGLY

DRAWING NUMBER  
**R-02**