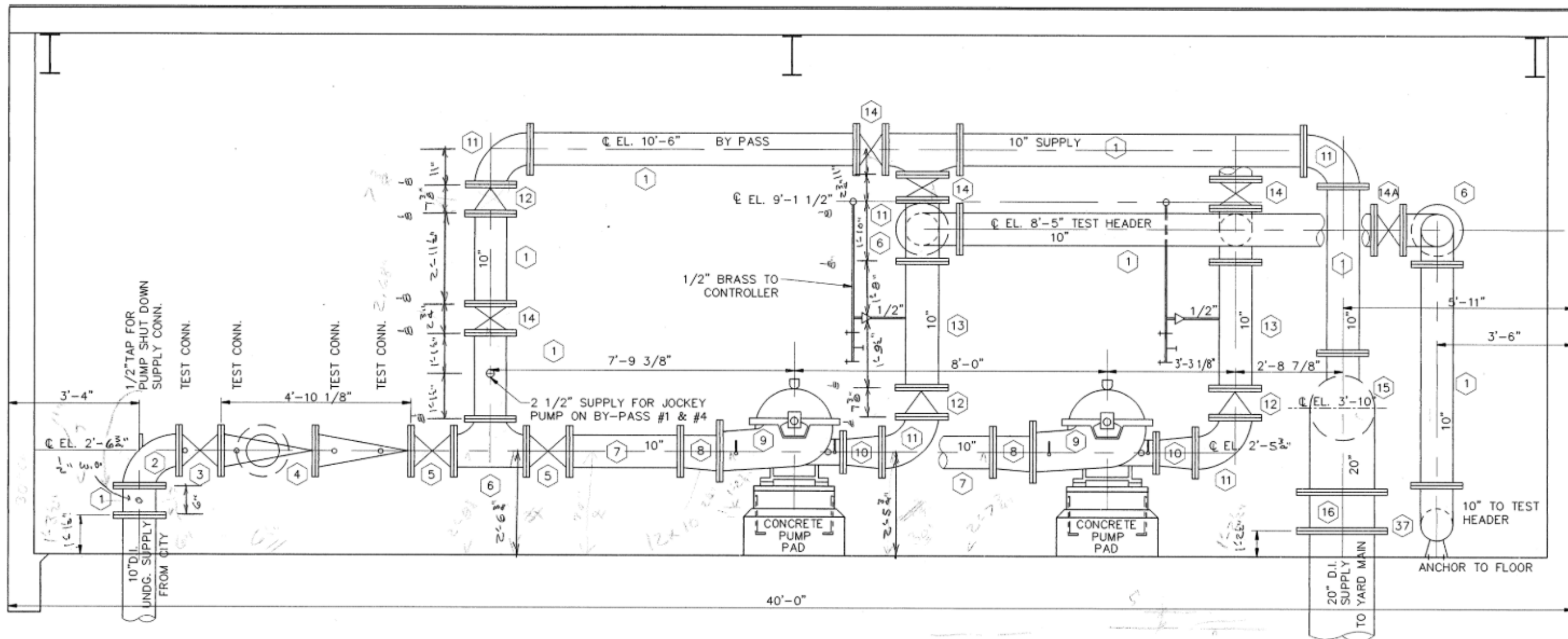


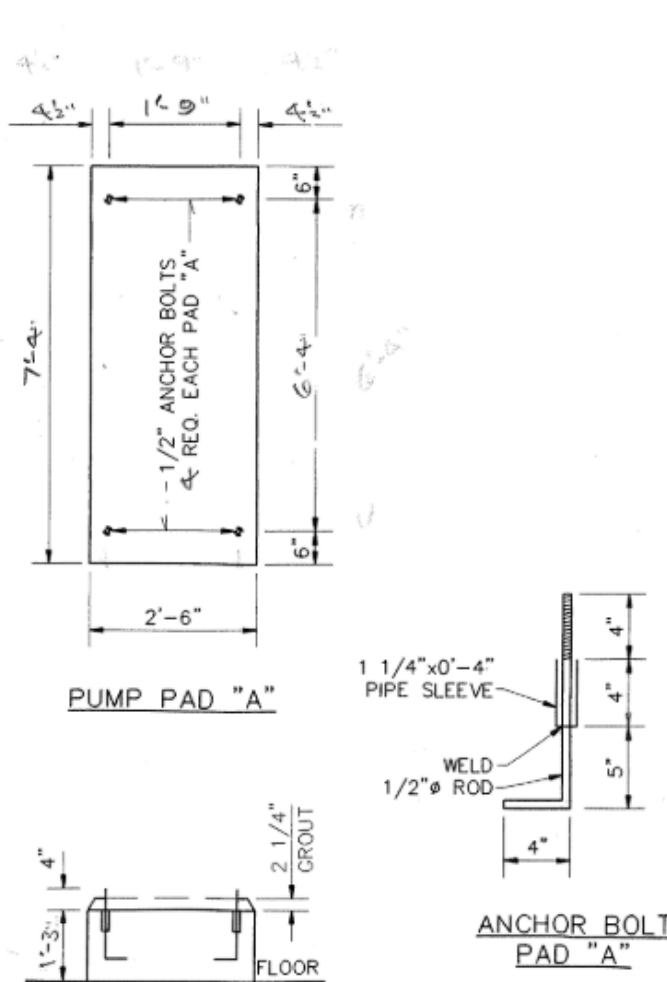
B.1 SECTION LOOKING EAST AT 20" HEADER

1/16" = 1'-0"

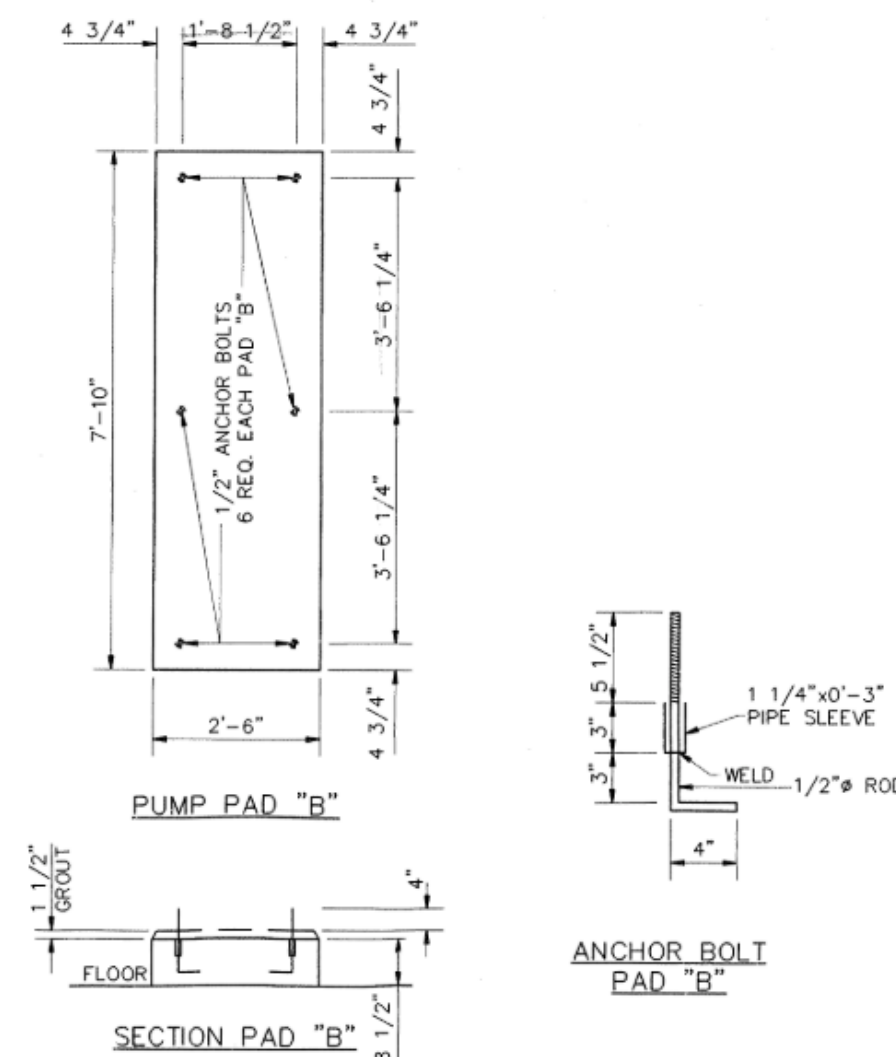


D.1 CROSS SECTION AT FIRE PUMPS

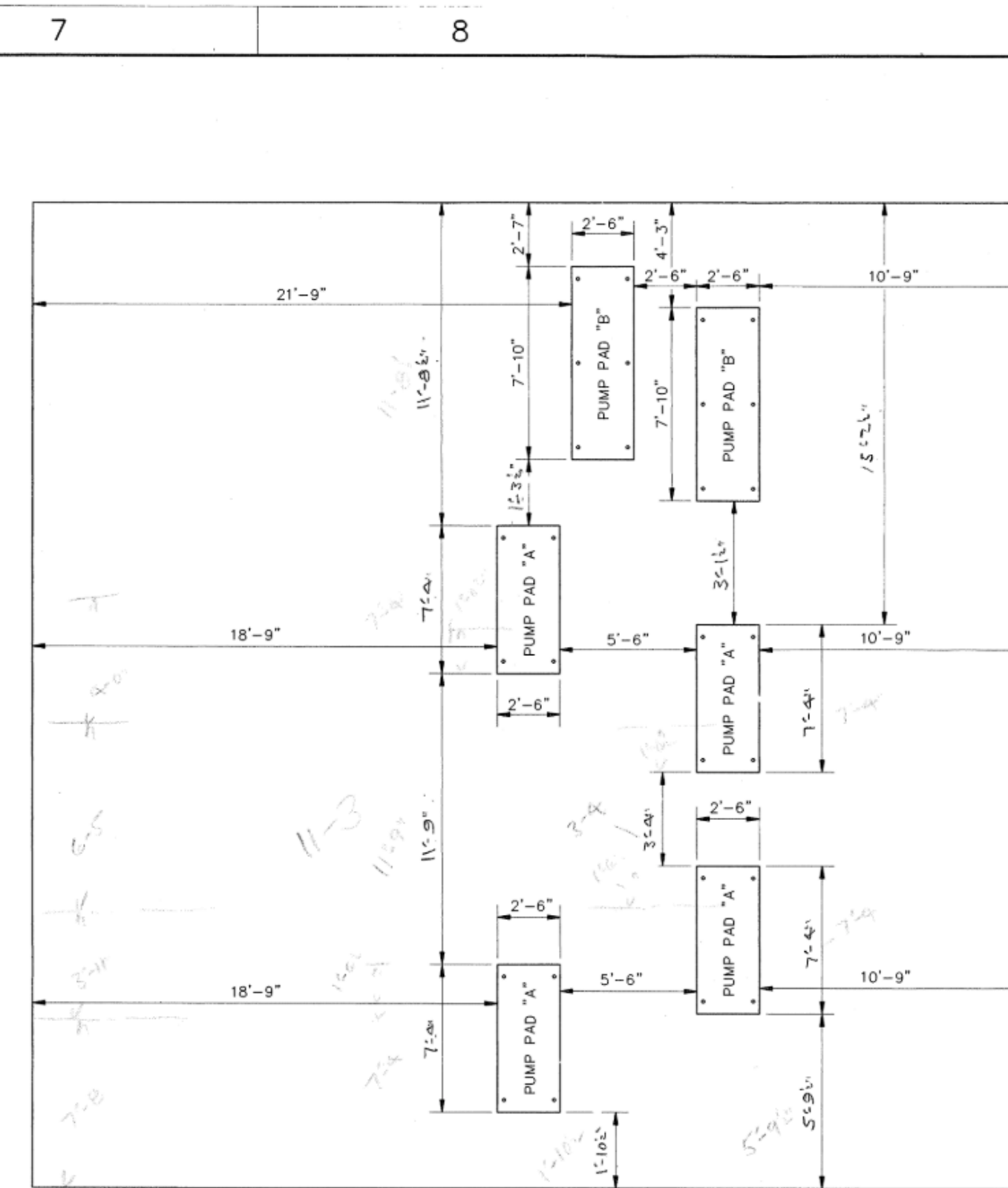
1/2" = 1'-0"



F.1 PUMP PAD & ANCHOR BOLT DETAILS

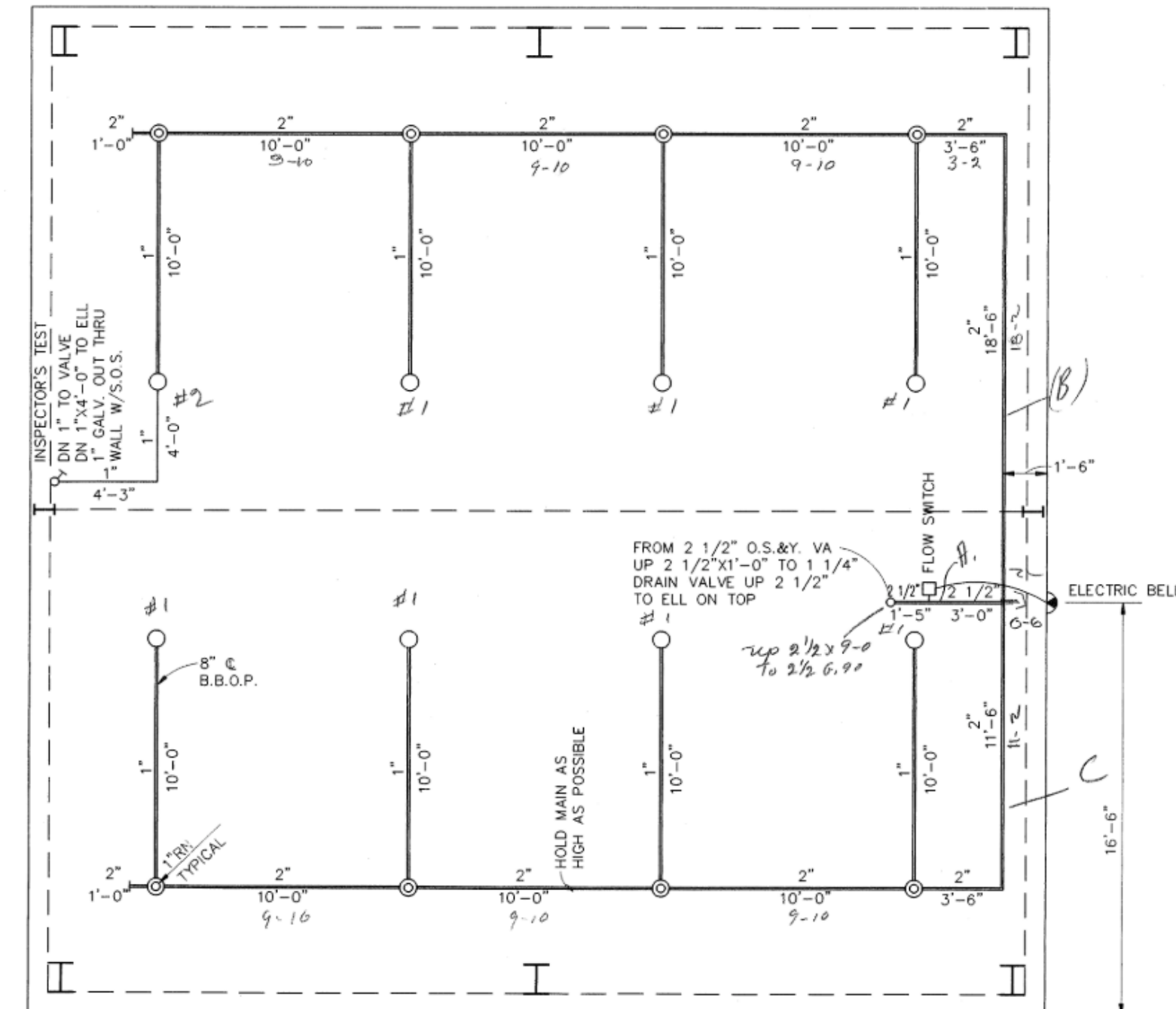


SCALE : VARIES



C.7 PUMP PAD & ANCHOR BOLT LOCATION PLAN

1/4" = 1'-0"



F.7 SPRINKLER SYSTEM PUMP HOUSE

1/4" = 1'-0"

DATE	BY	DATE	DESCRIPTION	REV	DATE	DESCRIPTION	BY
18-SEP-90	MTA						
20-SEP-90	PBB						
21-SEP-90	RUH						
AS SHOWN	SCALE						
FP-3 of 17	SHEET NO.						

Garver + Garver, P.A. Little Rock, Arkansas	Arkansas Modification Center LITTLE ROCK, ARKANSAS	ArkMod	Arkansas Professional Engineer Richard L. Hall No. 4130	COMPETENT REGISTRATION GARVER & GARVER, P.A. #23 ARKANSAS
--	---	--------	--	--

FIRE PUMP ELEVATIONS, FIRE PUMP PAD LAYOUT, AND FIRE PUMP HOUSE SPRINKLER SYSTEM LAYOUT	REVISION	DATE

BILL AND HILARY CLINTON
NATIONAL AIRPORT
LITTLE ROCK, AR 72206

BLDG 1000
REFERENCE
DRAWING

JOB NO.: 21A10111
DATE: MAY 2025
DESIGNED BY: JCF
DRAWN BY: JCF

BAR IS ONE INCH ON
ORIGINAL DRAWING
0 1"
IF NOT ONE INCH ON THIS SHEET,
ADJUST SCALES ACCORDINGLY.

DRAWING NUMBER

R-18

FOR REFERENCE ONLY

GARVER
© 2025 GARVER, LLC
THIS DOCUMENT, ALONG WITH THE
IDEAS AND DESIGNS CONVEYED
HEREIN, SHALL BE CONSIDERED
INSTRUMENTS OF PROFESSIONAL
SERVICE AND ARE PROPERTY OF
GARVER, LLC. ANY USE,
REPRODUCTION, OR DISTRIBUTION
OF THIS DOCUMENT, ALONG WITH
THE IDEAS AND DESIGN CONTAINED
HEREIN, IS PROHIBITED UNLESS
AUTHORIZED IN WRITING BY
GARVER, LLC OR EXPLICITLY
ALLOWED IN THE GOVERNING
PROFESSIONAL SERVICES
AGREEMENT FOR THIS WORK.