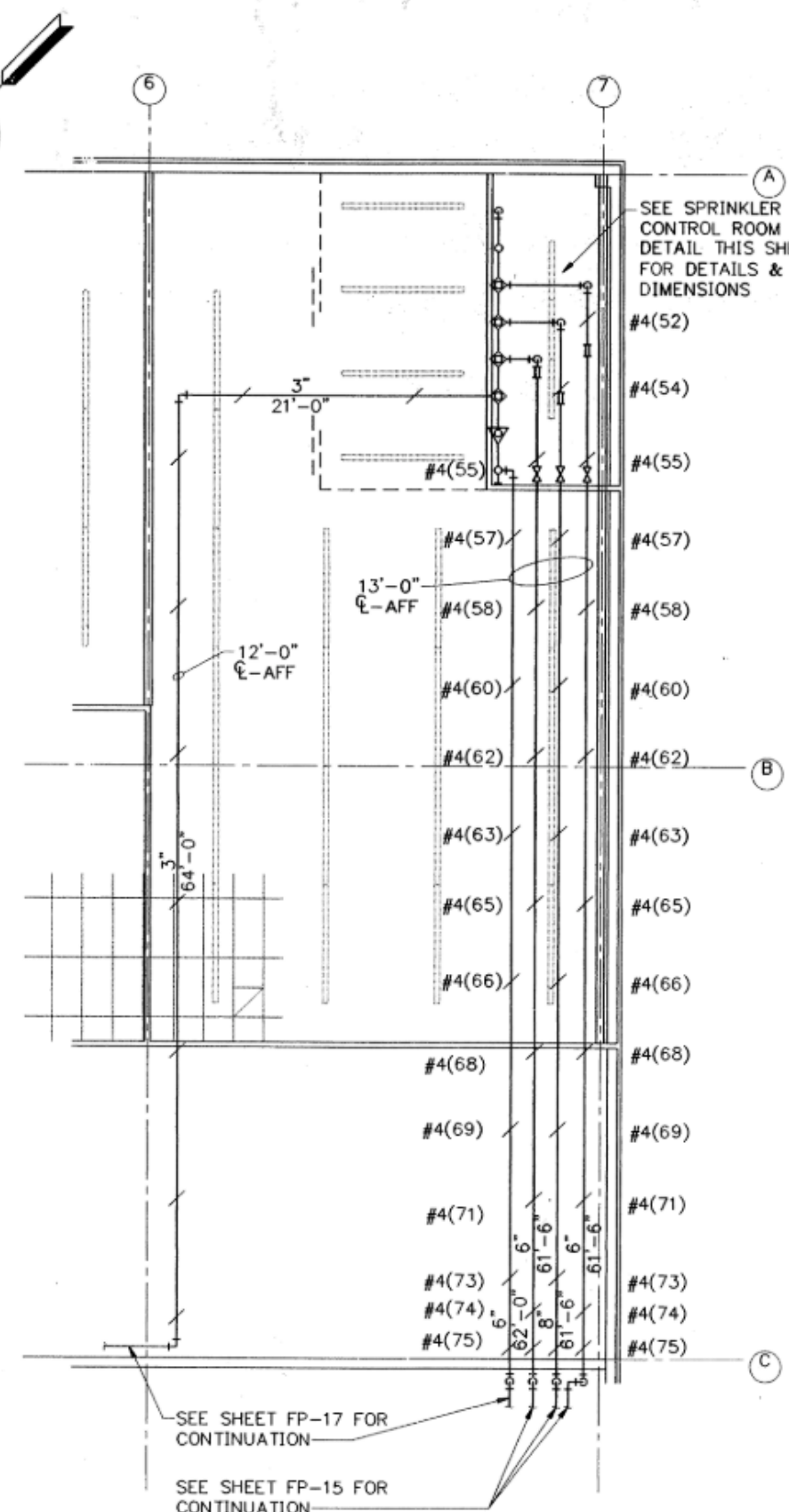


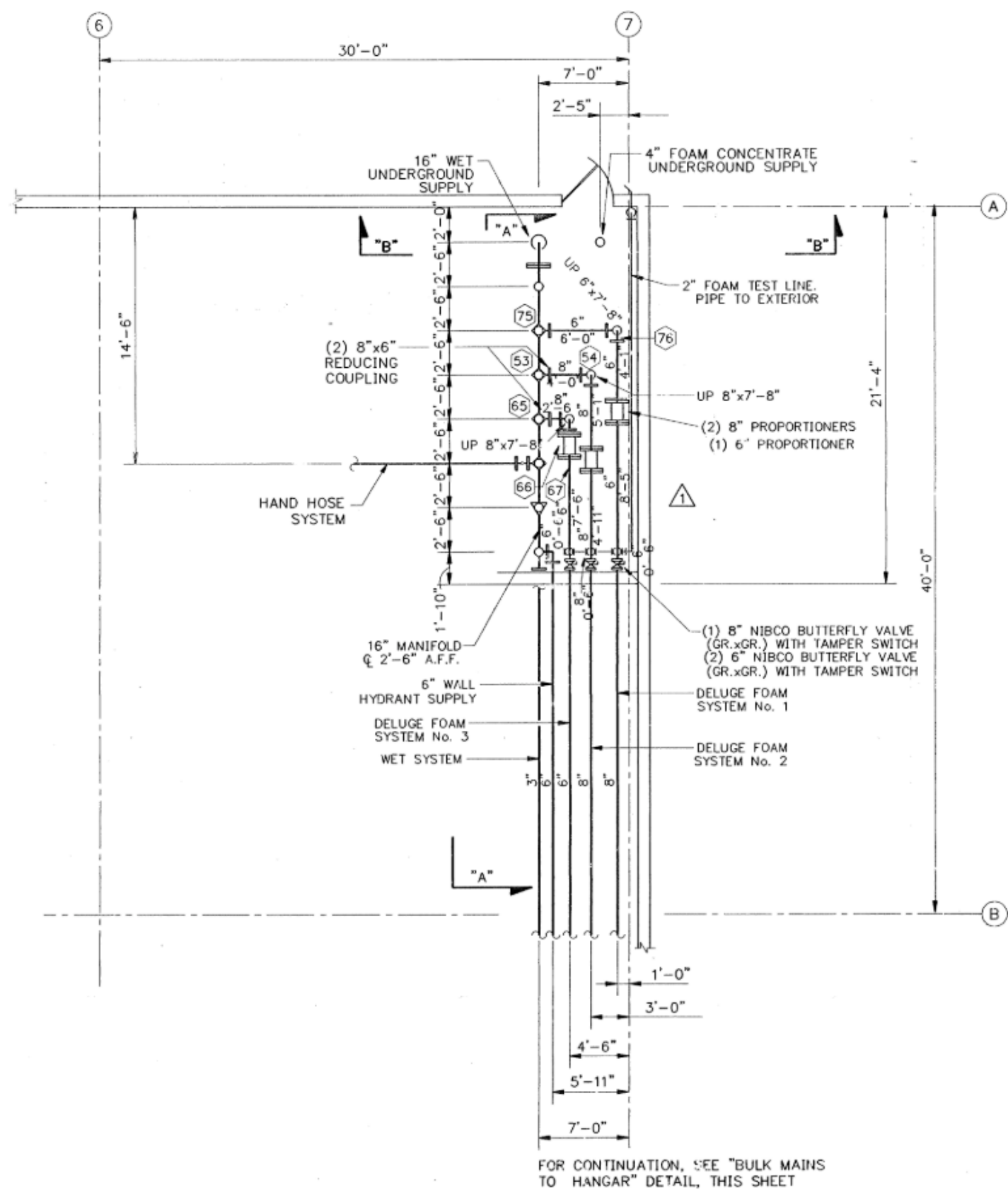
C.1 BUILDING 500 - SPRINKLER SYSTEM LAYOUT

1/8" = 1'-0"



C.8 BULK MAINS TO HANGAR

1/8" = 1'-0"



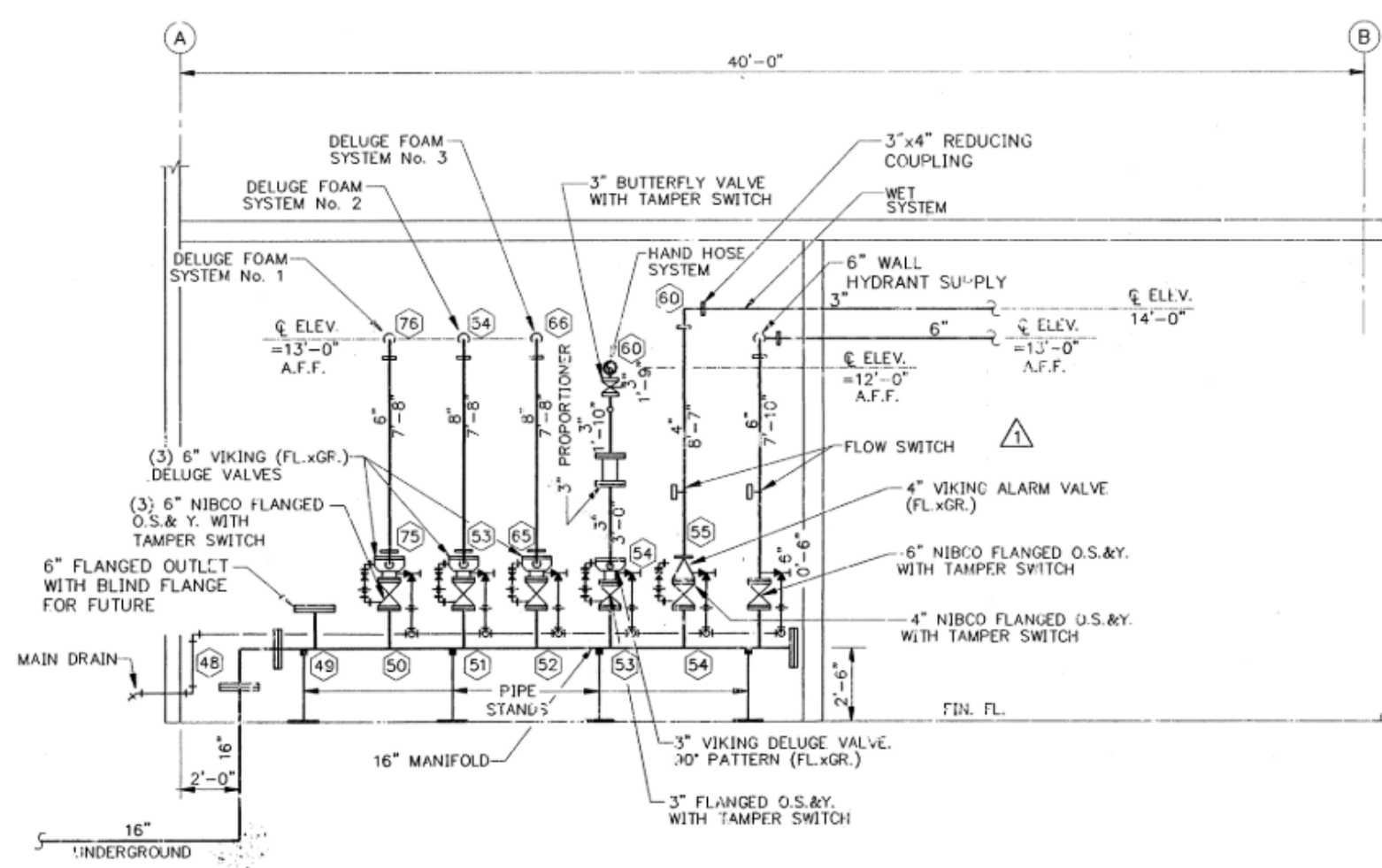
F.1 BUILDING 500 - SPRINKLER CONTROL ROOM DETAIL

NTS

CALCULATION SUMMARY - REMOTE AREA #1
DESIGN CRITERIA : .21/1500 - ORDINARY HAZARD GROUP 3
WATER REQUIRED FOR SYSTEM - 443.70GPM, 500GPM
HOSE ALLOWANCE FOR A TOTAL WATER REQ. OF 1218.70GPM
PRESSURE REQ. @ 0 - 17.46PSI. PRESSURE AVAILABLE
@ 0 - 95.08PSI.
NOTE: 275GPM ALLOWANCE FOR DOMESTIC USE.

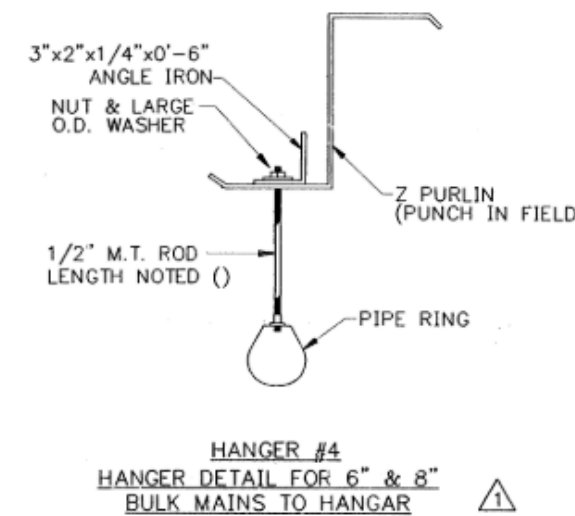
CALCULATION SUMMARY - REMOTE AREA #2
DESIGN CRITERIA : .10/1500 - LIGHT HAZARD
WATER REQUIRED FOR SYSTEM - 356.88GPM, 100GPM
HOSE ALLOWANCE FOR A TOTAL WATER REQ. OF 731.98GPM
PRESSURE REQ. @ 0 - 16.98PSI. PRESSURE AVAILABLE
@ 0 - 95.64PSI.
NOTE: 275GPM ALLOWANCE FOR DOMESTIC USE.

NOTES
SEE FINISH SCHEDULE FOR TYPE OF CEILING EACH ROOM.
CEILING HEIGHTS ARE 8'-0" UNLESS NOTED OTHERWISE.
DROPS ARE 1'-0" UNLESS NOTED OTHERWISE.
PIPE AFF - 14'-0" UNLESS NOTED OTHERWISE.



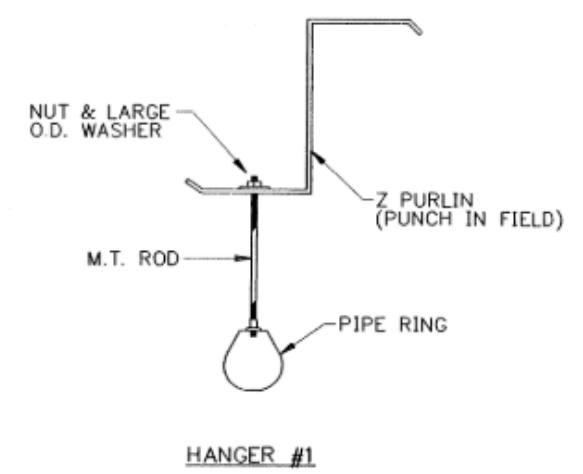
F.4 SECTION "A-A"

1/4" = 1'-0"

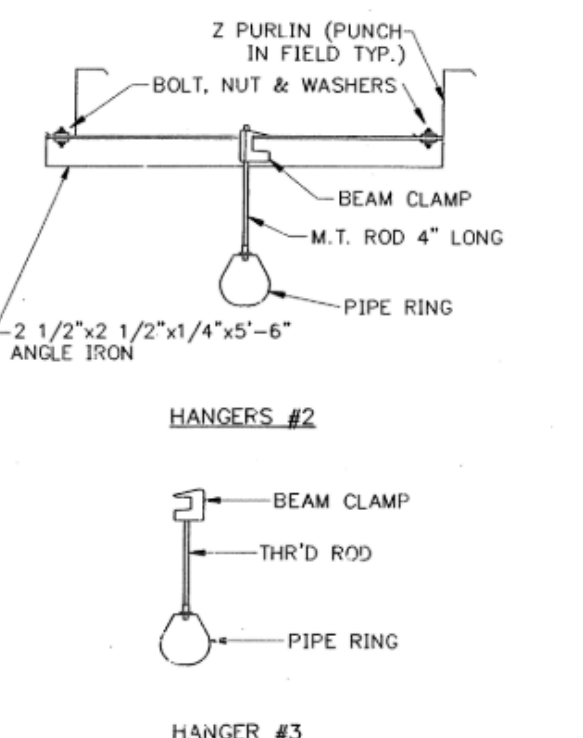


F.7 SECTION "B-B"

SYMBOL	DESCRIPTION	QTY.
○	BRASS UPRIGHT, 286", 1/2" ORIFICE K=5.6	87
⊙	BRASS UPRIGHT, 286", 1/2" ORIFICE ON 1" SPRIG	15
⊗	CHROME PENDENT, 165", 1/2" ORIFICE W/ 1/8" CH. ESC. K=5.6	43
△	DRY HORIZONTAL SIDEWALL, 286", 1/2" ORIFICE, 1'-3" LONG K=5.6	3



NOTE:
ALL BRANCH LINE HANGERS ARE #1
UNLESS NOTED OTHERWISE. LENGTH
NOTED AS ().



BUILDING 500
SHOP AREA SPRINKLER SYSTEM
LAYOUT AND RISER DETAILS

Arkansas
Modification
Center
LITTLE ROCK, ARKANSAS



Garver + Garver, P.A.
Little Rock, Arkansas

BY	DATE
JTA	28 SEP 90
MD	11 OCT 90
RLH	12 OCT 92
CHECKED	AS SHOWN
SHEET NO.	FP-15 OF 17

© 2025 GARVER, LLC
THIS DOCUMENT, ALONG WITH THE
IDEAS AND DESIGNS CONVEYED
HEREIN, SHALL BE CONSIDERED
INSTRUMENTS OF PROFESSIONAL
SERVICE AND ARE PROPERTY OF
GARVER, LLC. ANY USE,
REPRODUCTION, OR DISTRIBUTION
OF THIS DOCUMENT, ALONG WITH
THE IDEAS AND DESIGN CONTAINED
HEREIN, IS PROHIBITED UNLESS
AUTHORIZED IN WRITING BY
GARVER, LLC OR EXPLICITLY
ALLOWED IN THE GOVERNING
PROFESSIONAL SERVICES
AGREEMENT FOR THIS WORK.

FOR REFERENCE ONLY

BY	DESCRIPTION	REV	DATE

BILL AND HILARY CLINTON
NATIONAL AIRPORT
LITTLE ROCK, AR 72206

BLDG 500
REFERENCE
DRAWING

JOB NO.: 21A10111
DATE: MAY 2025
DESIGNED BY: JCF
DRAWN BY: JCF

BAR IS ONE INCH ON
ORIGINAL DRAWING
IF NOT ONE INCH ON THIS SHEET,
ADJUST SCALES ACCORDINGLY.

DRAWING NUMBER
R-14