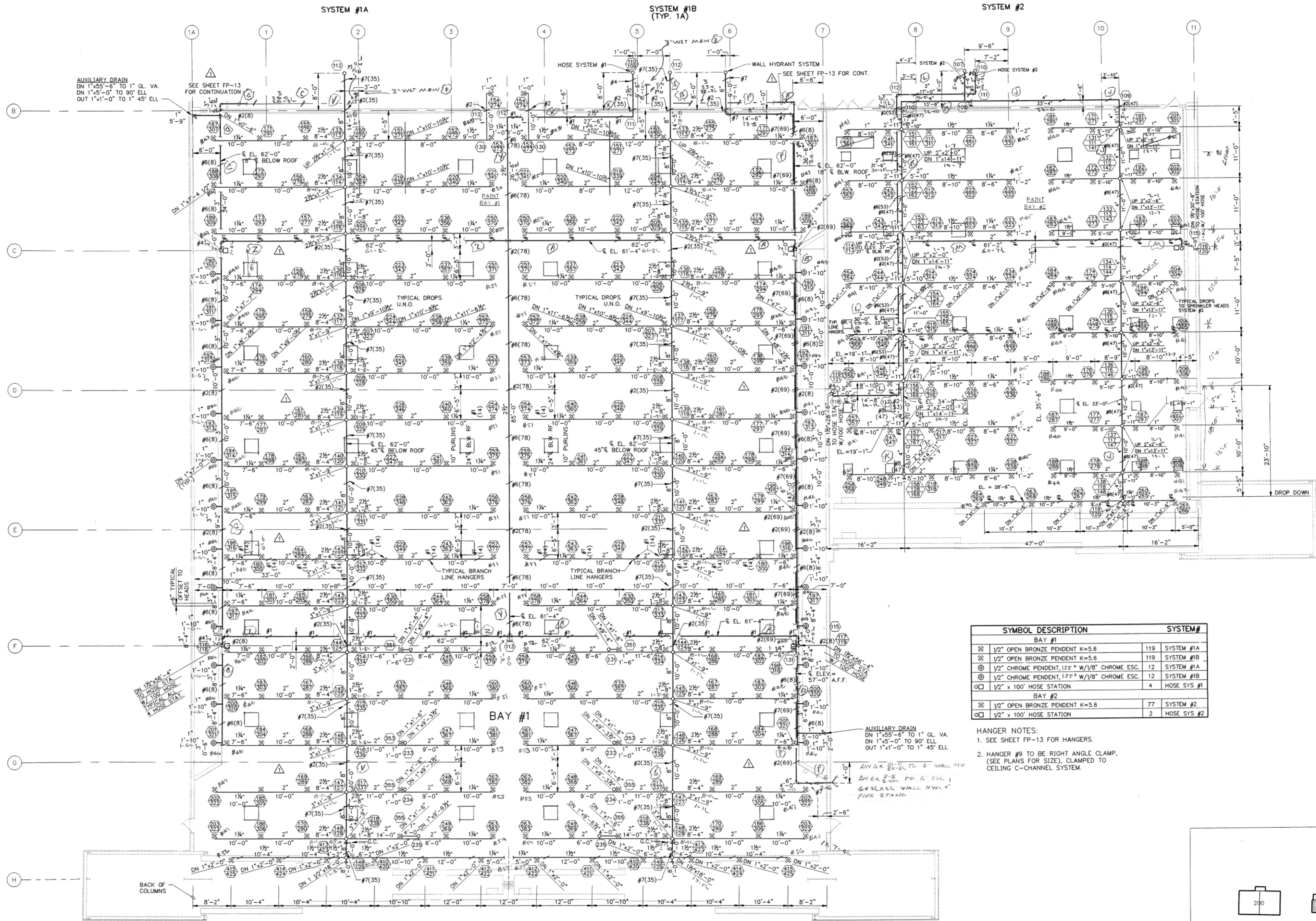


F.1 BUILDING 400 - SPRINKLER SYSTEM LAYOUT - PAINT BAYS

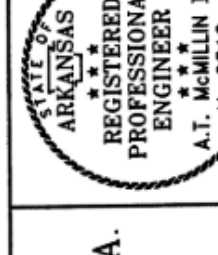
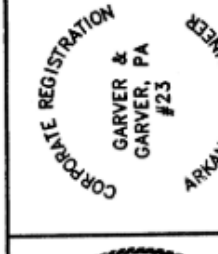


SYMBOL DESCRIPTION		SYSTEM #
BAY #1		
⊗	1/2" OPEN BRONZE PENDENT K=5.6	119 SYSTEM #1A
⊗	1/2" OPEN BRONZE PENDENT K=5.6	119 SYSTEM #1B
⊗	1/2" CHROME PENDENT, 1.5" W/1/8" CHROME ESC.	12 SYSTEM #1A
⊗	1/2" CHROME PENDENT, 1.5" W/1/8" CHROME ESC.	12 SYSTEM #1B
⊗	1/2" x 100' HOSE STATION	4 HOSE SYS #1
BAY #2		
⊗	1/2" OPEN BRONZE PENDENT K=5.6	77 SYSTEM #2
⊗	1/2" x 100' HOSE STATION	2 HOSE SYS #2

- HANGER NOTES:
- SEE SHEET FP-13 FOR HANGERS.
 - HANGER #9 TO BE RIGHT ANGLE CLAMP. (SEE PLANS FOR SIZE), CLAMPED TO CEILING C-CHANNEL SYSTEM.

BUILDING 400
SPRINKLER SYSTEM LAYOUT
PAINT BAYS

Arkansas
Modification
Center
LITTLE ROCK, ARKANSAS



Garver + Garver, P.A.
Little Rock, Arkansas

DATE
DESIGNED MTA
DRAWN MBD
CHECKED ATW
SCALE: 1/8" = 1'-0"
SHEET NO. FP-14

BILL AND HILARY CLINTON
NATIONAL AIRPORT
LITTLE ROCK, AR 72206

BLDG 400
REFERENCE
DRAWING

JOB NO.: 21A10111
DATE: MAY 2025
DESIGNED BY: JCF
DRAWN BY: JCF

BAR IS ONE INCH ON
ORIGINAL DRAWING
IF NOT ONE INCH ON THIS SHEET,
ADJUST SCALES ACCORDINGLY.

DRAWING NUMBER
R-12

FOR REFERENCE ONLY



© 2025 GARVER, LLC
THIS DOCUMENT, ALONG WITH THE
IDEAS AND DESIGNS CONVEYED
HEREIN, SHALL BE CONSIDERED
INSTRUMENTS OF PROFESSIONAL
SERVICE AND ARE PROPERTY OF
GARVER, LLC. ANY USE,
REPRODUCTION, OR DISTRIBUTION
OF THIS DOCUMENT, ALONG WITH
THE IDEAS AND DESIGN CONTAINED
HEREIN, IS PROHIBITED UNLESS
AUTHORIZED IN WRITING BY
GARVER, LLC OR EXPLICITLY
ALLOWED IN THE GOVERNING
PROFESSIONAL SERVICES
AGREEMENT FOR THIS WORK.