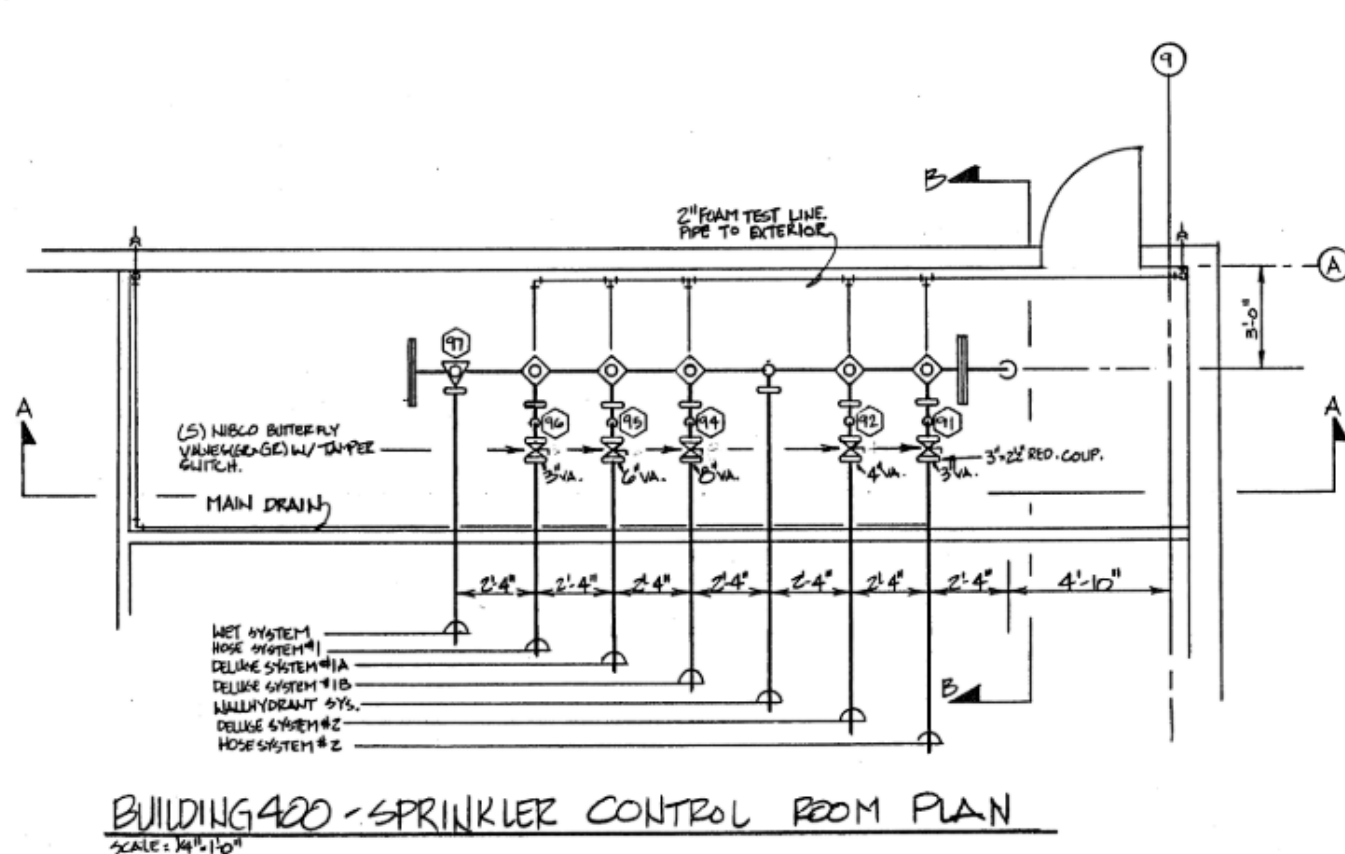
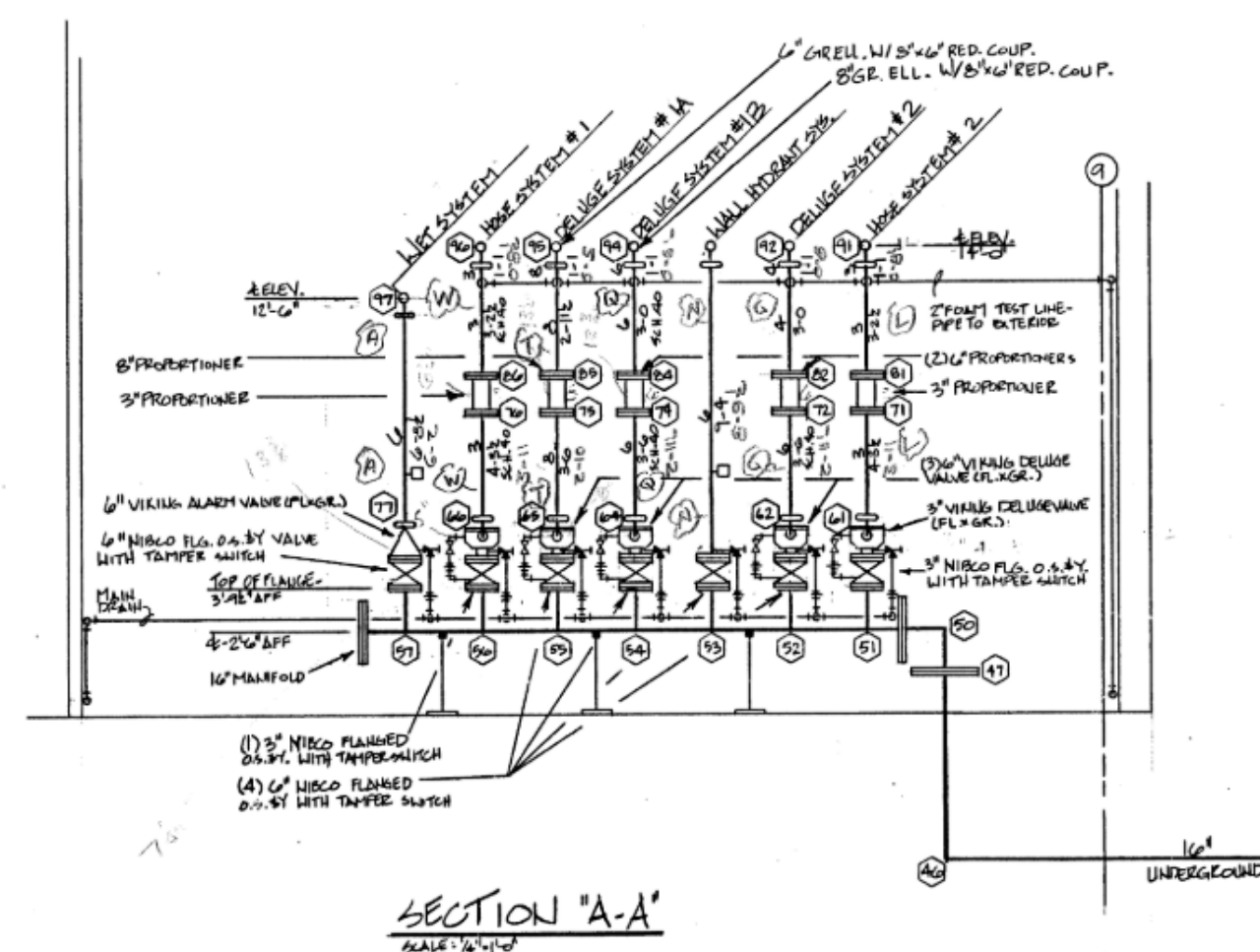


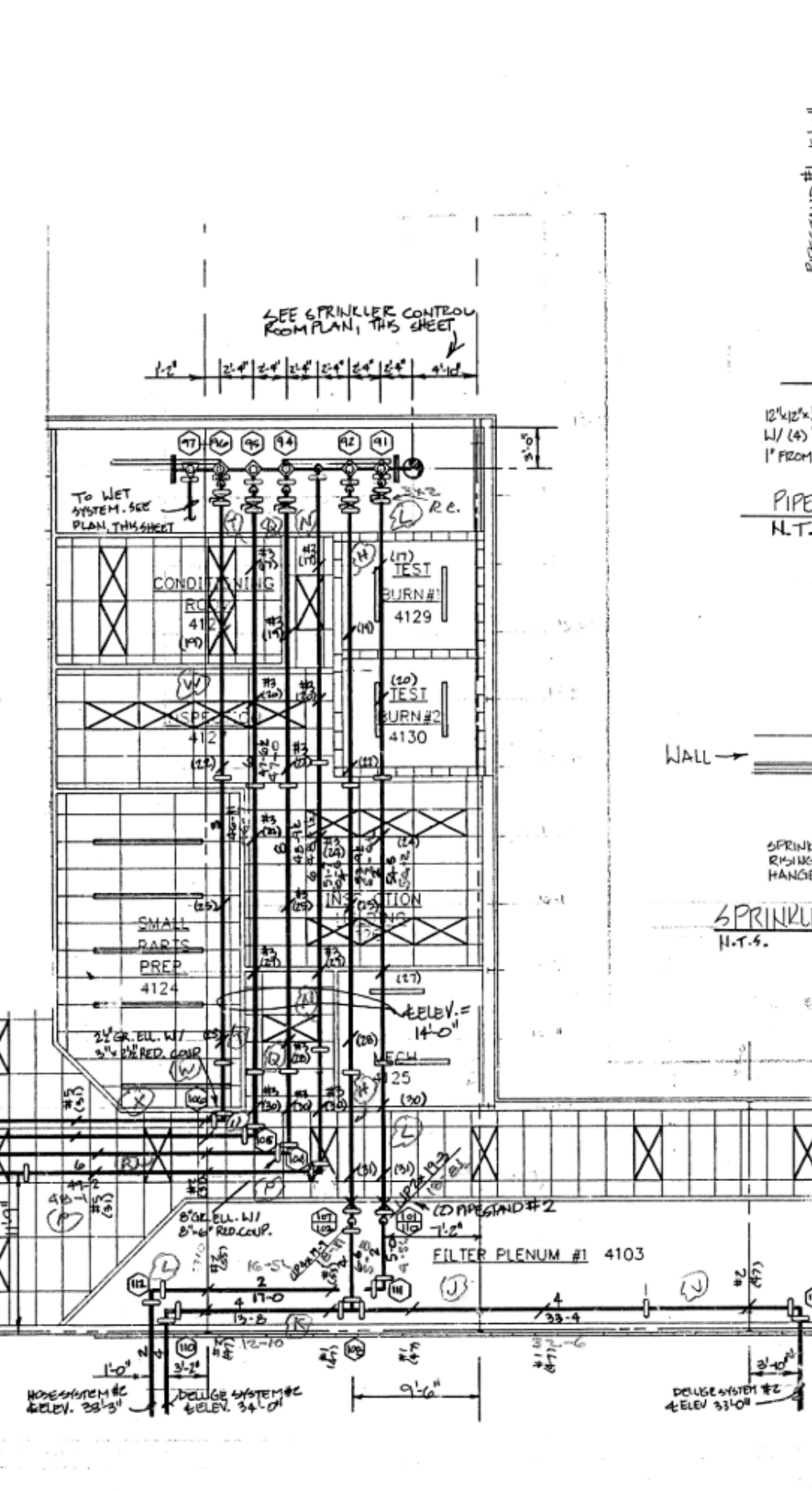
61 BUILDING 400 - FIRE PROTECTION PLAN - OFFICE AND SHOP AREAS



BUILDING 400 - SPRINKLER CONTROL ROOM PLAN



SECTION "A-A"

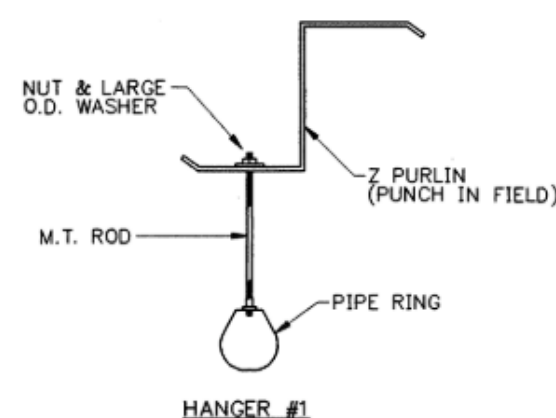


BUILDING 400- BULK MAINS TO HANGAR

SYMBOL	SPRINKLER DESCRIPTION	QTY.
○	BRASS UPRIGHT, 286°, 1/2" ORIFICE K=5.6	39
⊙	BRASS UPRIGHT, 1/2" ORIFICE ON 1" SPRIG K = 5.6	7
⊗	CHROME PENDENT, 165°, 1/2" ORIFICE W/ 1/2" CH. ESC. K=5.6	108
⊙	CHROME PENDENT, 500°, 1/2" ORIFICE W/ 1/2" CH. ESC. K = 5.6	2

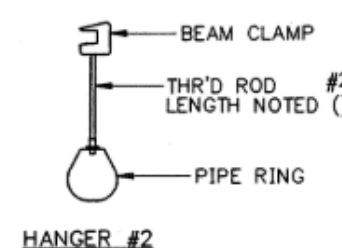
HGR#	PIPE SIZE	ANGLE IRON
4	6"	4"x4"x4"x1/2"x5'-6"
5	6" & 6" 6" & 2 1/2"	4"x4"x5/16"x5'-6"
6	3", 2 1/2"	3"x2"x1/4"x5'-6"
7	8"	4"x4"x1/4"x5'-6"

DROP SCHEDULE	
LETTER	LENGTH
NO LETTER (25)	1" x 4' - 6"
A (4)	1" x 3' - 6"
B (6)	1" x 2' - 6"
C (3)	1" x 0' - 6"
D (1)	1" x 3' - 1 1/2"

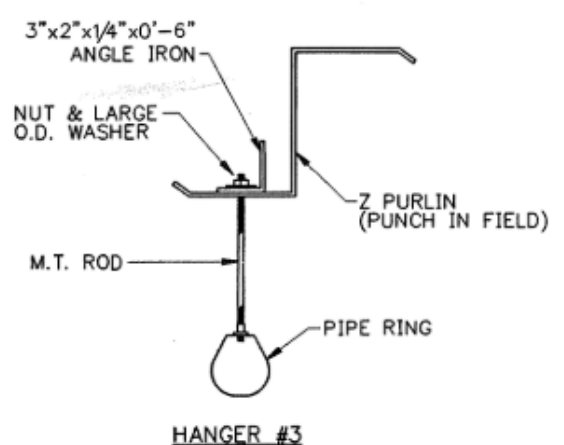


HANGER_#

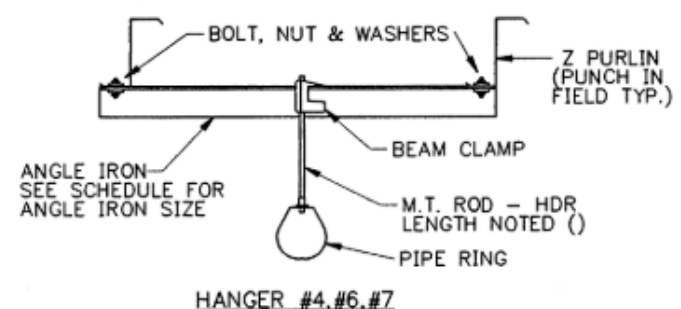
NOTE:
ALL BRANCH LINE HANGERS
UNLESS NOTED OTHERWISE.
NOTED AS ().



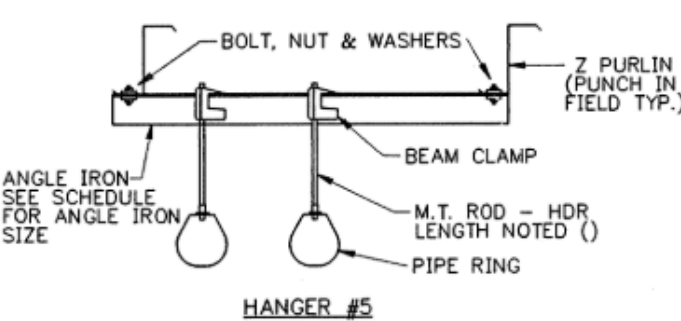
HANGER #2



HANGER


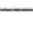







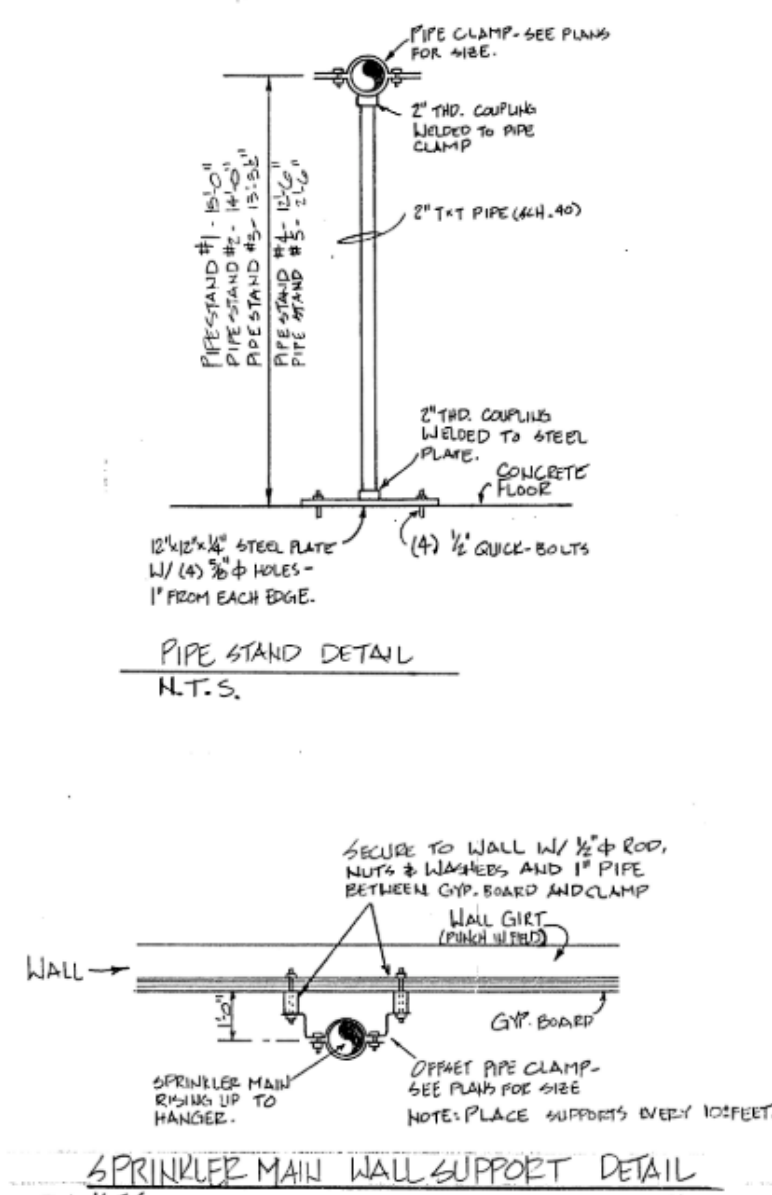
HANGER #4



HANGER

- LEGEND**

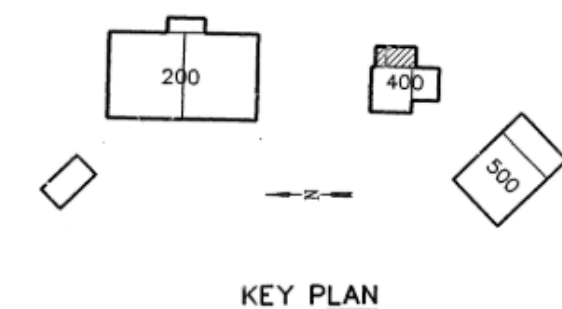
	2x4 LAY-IN FLUORESCENT LIGHT
<hr/>	
	RETURN AIR OPENINGS
	SUPPLY AIR OPENINGS
	WINDOW/ACCESS PANEL
	PENDANT MOUNTED HID FIXTURE
<hr/>	
	RECESSED LIGHT
<hr/>	
	STRIP FLUORESCENT LIGHT



PIPE STAND DETAIL

N.T.S.

SPRINKLER MAIN WALL SUPPORT DETAIL



KEY PLAN

ISSUE FOR CONSTR. 4-22-91

BUILDING 400
FIRE PROTECTION PLAN
OFFICE & SHOP AREAS

Arkansas
Modification
Center
LITTLE ROCK, ARKANSAS



CORPORATE REGISTRATION
GARVER &
GARVER, PA
#23
ARKANSAS • ENGINEER

Garver + Garver, P.A.

consos

DESIGNED	BY	DATE
DRAWN	JBM	12 APR 9
CHECKED		
SCALE: AS SHOWN		
SHEET NO. CD 13		

A © 2025 GARVER, LLC
THIS DOCUMENT, ALONG WITH THE
IDEAS AND DESIGNS CONVEYED
HEREIN, SHALL BE CONSIDERED
INSTRUMENTS OF PROFESSIONAL
SERVICE AND ARE PROPERTY OF
GARVER, LLC. ANY USE,
REPRODUCTION, OR DISTRIBUTION
OF THIS DOCUMENT, ALONG WITH
THE IDEAS AND DESIGN CONTAINED
HEREIN, IS PROHIBITED UNLESS
AUTHORIZED IN WRITING BY
GARVER, LLC OR EXPLICITLY
ALLOWED IN THE GOVERNING
PROFESSIONAL SERVICES
AGREEMENT FOR THIS WORK.

FOR REFERENCE ONLY

[illegible]

**BILL AND HILARY CLINTON
NATIONAL AIRPORT
LITTLE ROCK, AR 72206**

LIT FIRE SUPPRESSION IMPROVEMENTS

BLDG 400
REFERENCE
DRAWING

JOB NO.: 21A10111
DATE: MAY 2025
DESIGNED BY: JCF
DRAWN BY: JCF

BAR IS ONE INCH ON
ORIGINAL DRAWING
0 1"
IF NOT ONE INCH ON THIS SHEET,
ADJUST SCALES ACCORDINGLY.
DRAWING NUMBER