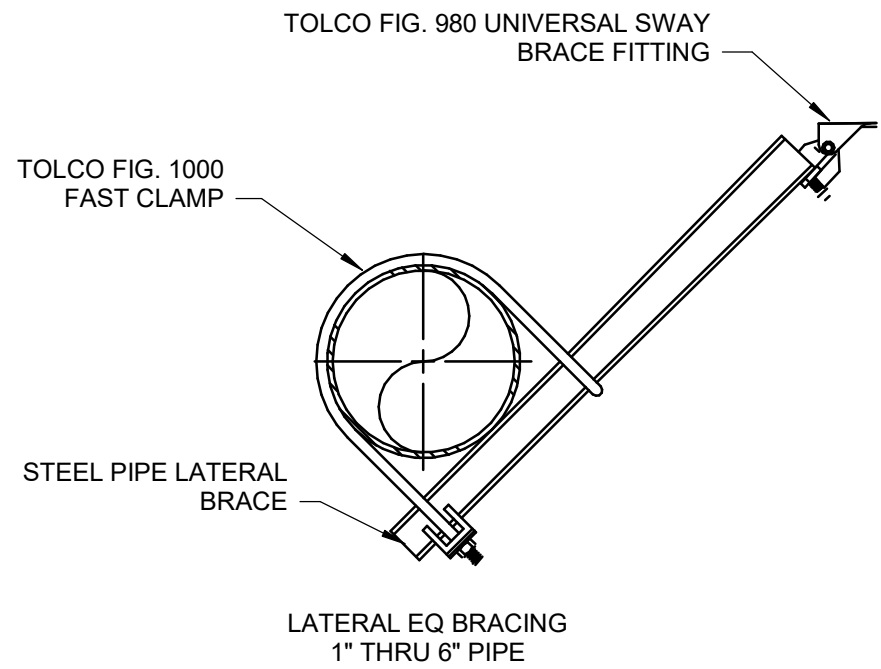


NOTE: THIS INSTALLATION MAY BE USED IN LIEU OF THE HARD PIPE RETURN BEND INSTALLATION FOR SEISMIC, EASE OF INSTALLATION, TENANT FLEXIBILITY, OWNER, OR SPECIFIC SPRINKLER HEAD LOCATION REQUIREMENTS.

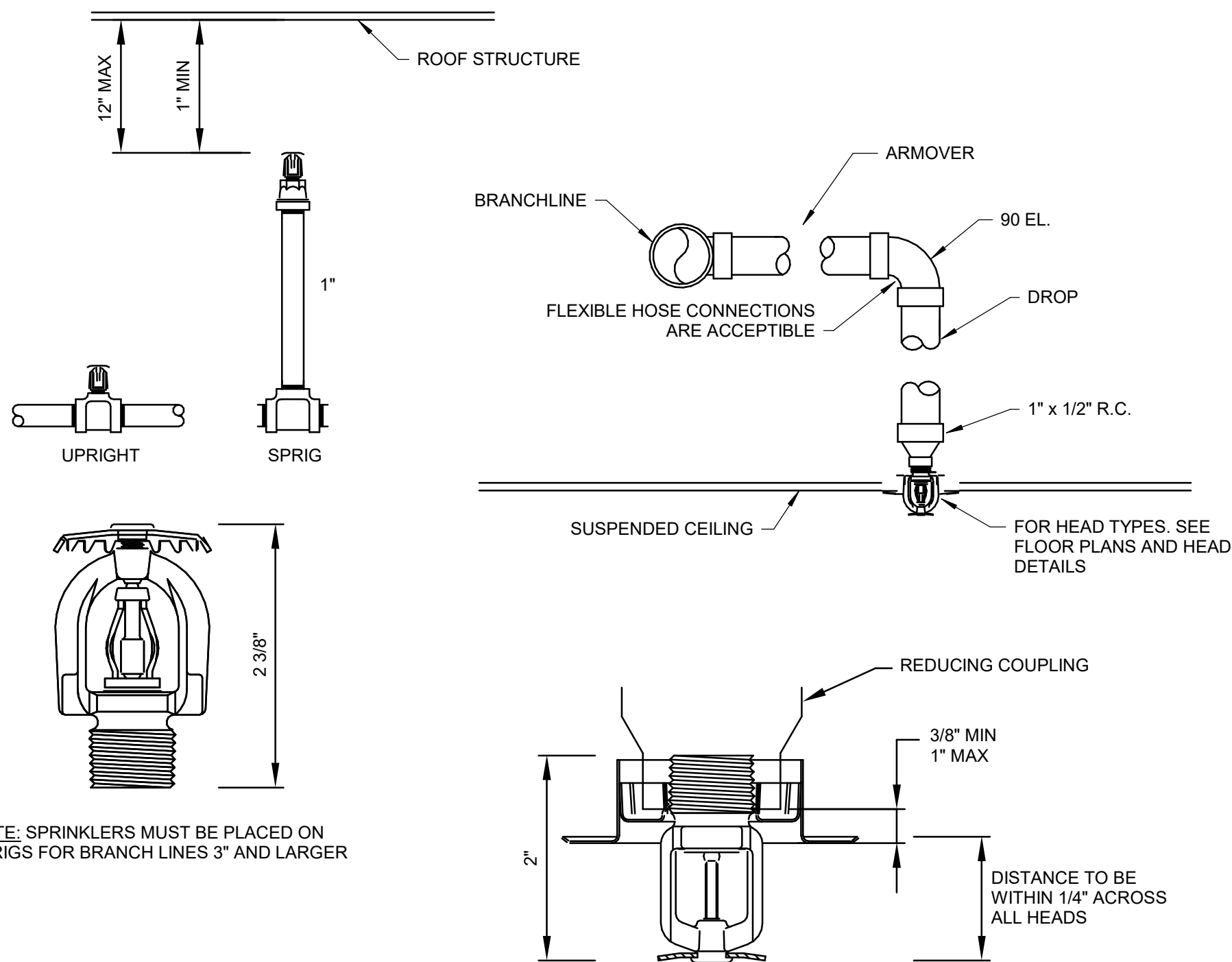
3 BRAIDED FLEXIBLE SPRINKLER DROP DETAIL

SCALE: NOT TO SCALE:



1 TYPICAL SEISMIC BRACING

SCALE: NONE



2 TYPICAL SPRINKLER DETAILS

SCALE: SCALE: NONE



© 2025 GARVER, LLC
THIS DOCUMENT, ALONG WITH THE
IDEAS AND DESIGNS CONVEYED
HEREIN, SHALL BE CONSIDERED
INSTRUMENTS OF PROFESSIONAL
SERVICE AND ARE PROPERTY OF
GARVER, LLC. ANY USE,
REPRODUCTION, OR DISTRIBUTION
OF THIS DOCUMENT, ALONG WITH
THE IDEAS AND DESIGN CONTAINED
HEREIN, IS PROHIBITED UNLESS
AUTHORIZED IN WRITING BY
GARVER, LLC OR EXPLICITLY
ALLOWED IN THE GOVERNING
PROFESSIONAL SERVICES
AGREEMENT FOR THIS WORK.



REV	DATE	DESCRIPTION	BY

BILL AND HILARY CLINTON
NATIONAL AIRPORT
LITTLE ROCK, AR 72206

LIT FIRE SUPPRESSION
IMPROVEMENTS

FIRE SUPPRESSION
DETAILS

JOB NO.: 21A10111
DATE: MAY 2025
DESIGNED BY: JCF
DRAWN BY: JCF

BAR IS ONE INCH ON
ORIGINAL DRAWING
0 1"
IF NOT ONE INCH ON THIS SHEET,
ADJUST SCALES ACCORDINGLY.

DRAWING NUMBER
FX-501