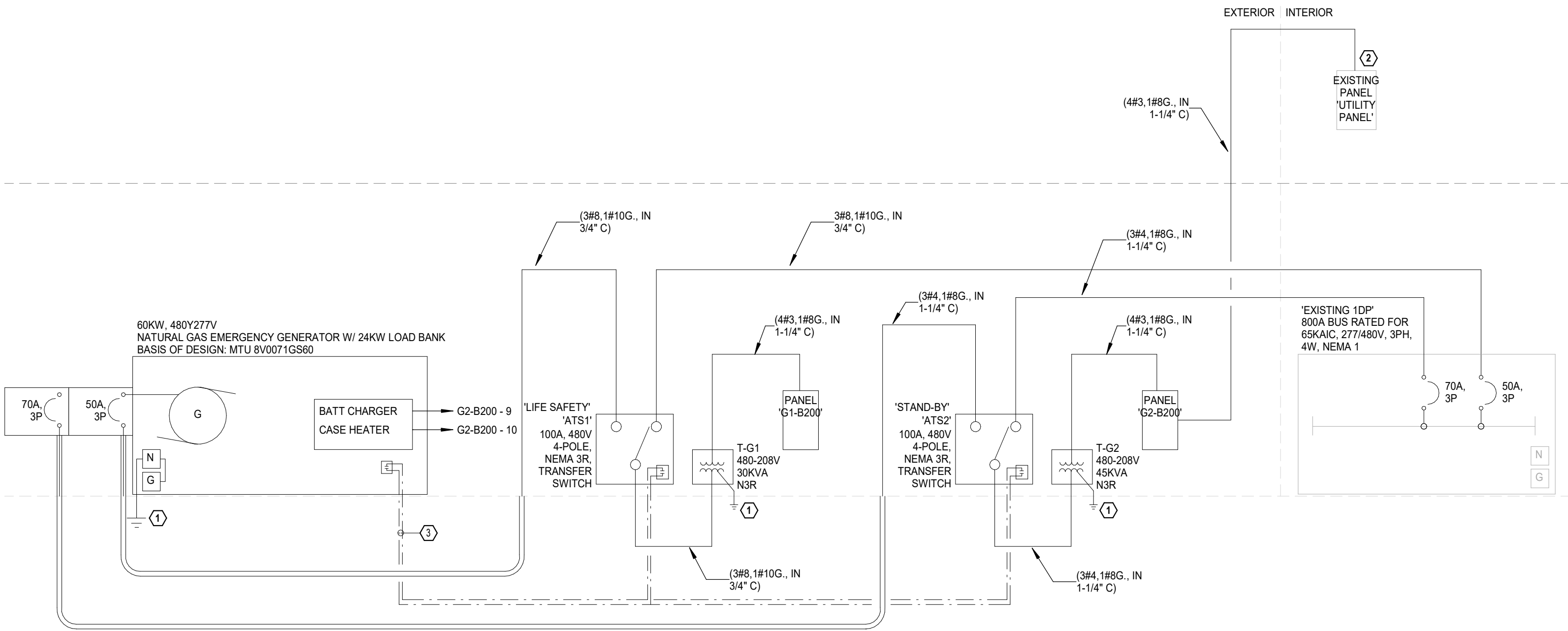
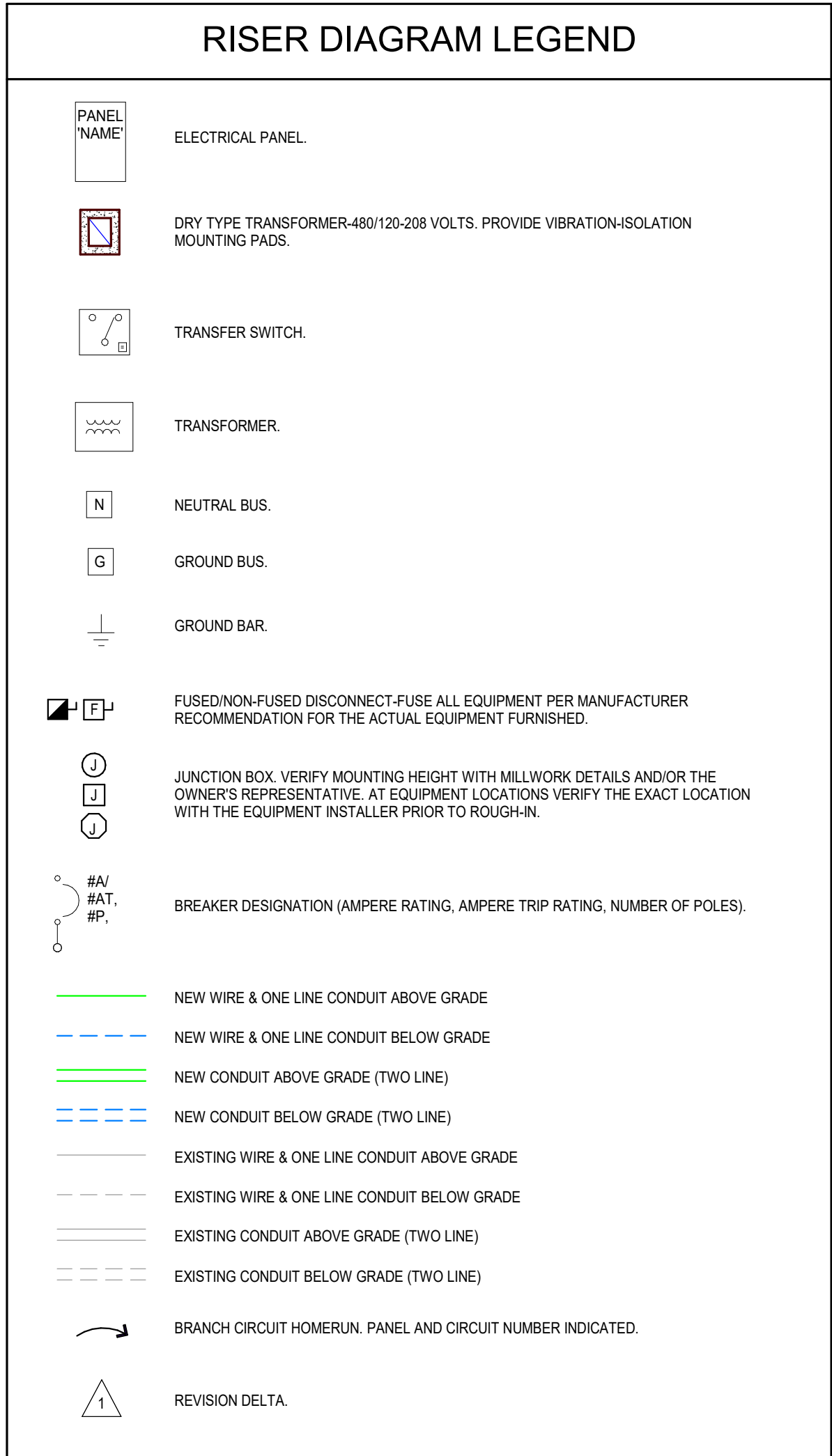


P  
N  
M  
L  
K  
J  
H  
G  
F  
E  
D  
C  
B  
A



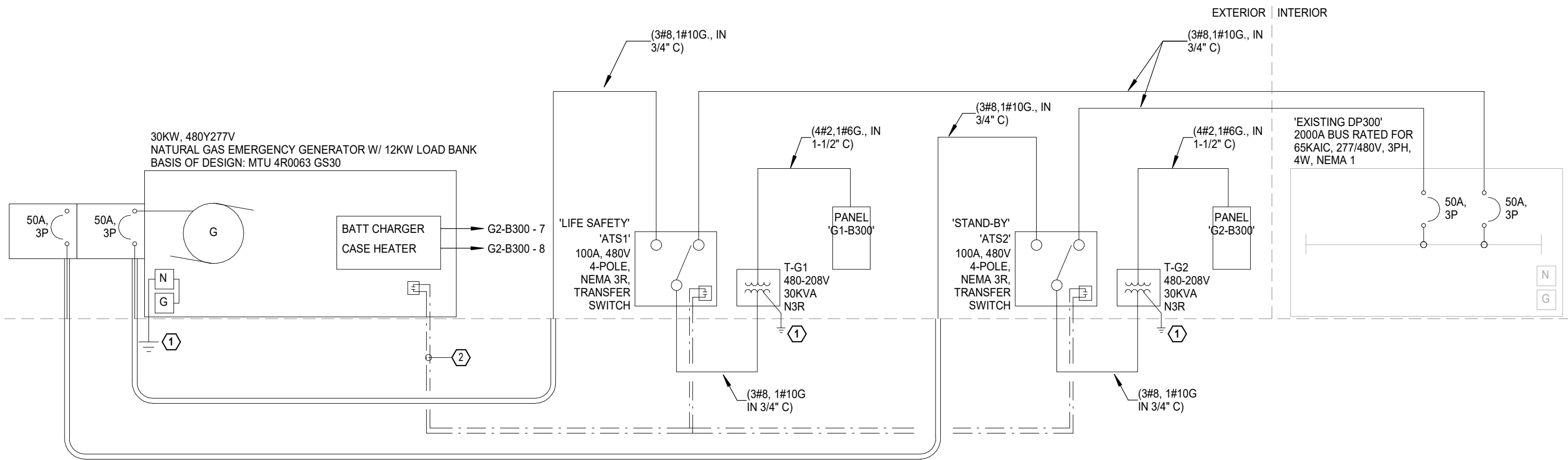
**ONE-LINE DIAGRAM GENERAL NOTES:**

- A. CONTRACTOR SHALL PROVIDE ENGRAVED NAMEPLATE ON ALL NEW ELECTRICAL EQUIPMENT INDICATING EQUIPMENT VOLTAGE, AMPERAGE AND AVAILABLE SHORT CIRCUIT RATING PER 2017 NEC.
- B. ALL CONDUCTORS SHALL BE COPPER.
- C. PRIOR TO INSTALLATION OF UNDERGROUND FEEDERS, THE ELECTRICAL CONTRACTOR SHALL SUBMIT AN UNDERGROUND ROUTING PLAN TO THE ENGINEER OF RECORD. SUBMITTAL SHALL INDICATE THE EXACT ROUTING PATH FOR ALL UNDERGROUND CONDUIT, STUB-UP LOCATIONS, SIZE AND QUANTITY OF CONDUIT. ALL ELECTRICAL PANELS AND EQUIPMENT SHALL BE SHOWN ON THIS PLAN FOR REFERENCE OF CONDUIT TERMINATION.

**ELECTRICAL KEYED NOTES:**

- ① PROVIDE GROUNDING PER NEC ARTICLE 250 REQUIREMENTS.
- ② REMOVE UTILITY PANELBOARD FEEDER BACK TO SOURCE DISTRIBUTION PANELBOARD. FIELD TRACE PRIOR TO REMOVAL.
- ③ CONTROL WIRING IN 3/4"C FROM GENERATOR TO EACH AUTOMATIC TRANSFER DEVICE.

**1 ELECTRICAL RISER DIAGRAM - BUILDING 200**  
NOT TO SCALE



**ONE-LINE DIAGRAM GENERAL NOTES:**

- A. CONTRACTOR SHALL PROVIDE ENGRAVED NAMEPLATE ON ALL NEW ELECTRICAL EQUIPMENT INDICATING EQUIPMENT VOLTAGE, AMPERAGE AND AVAILABLE SHORT CIRCUIT RATING PER 2017 NEC.
- B. ALL CONDUCTORS SHALL BE COPPER.
- C. PRIOR TO INSTALLATION OF UNDERGROUND FEEDERS, THE ELECTRICAL CONTRACTOR SHALL SUBMIT AN UNDERGROUND ROUTING PLAN TO THE ENGINEER OF RECORD. SUBMITTAL SHALL INDICATE THE EXACT ROUTING PATH FOR ALL UNDERGROUND CONDUIT, STUB-UP LOCATIONS, SIZE AND QUANTITY OF CONDUIT. ALL ELECTRICAL PANELS AND EQUIPMENT SHALL BE SHOWN ON THIS PLAN FOR REFERENCE OF CONDUIT TERMINATION.

**ELECTRICAL KEYED NOTES:**

- ① PROVIDE GROUNDING PER NEC ARTICLE 250 REQUIREMENTS.
- ② CONTROL WIRING IN 3/4"C FROM GENERATOR TO EACH AUTOMATIC TRANSFER DEVICE.

**2 ELECTRICAL RISER DIAGRAM - BUILDING 300**  
NOT TO SCALE



© 2025 GARVER, LLC  
THIS DOCUMENT, ALONG WITH THE  
IDEAS AND DESIGNS CONVEYED  
HEREIN, SHALL BE CONSIDERED  
INSTRUMENTS OF PROFESSIONAL  
SERVICE AND ARE PROPERTY OF  
GARVER, LLC. ANY USE,  
REPRODUCTION, OR DISTRIBUTION  
OF THIS DOCUMENT, ALONG WITH  
THE IDEAS AND DESIGN CONTAINED  
HEREIN, IS PROHIBITED UNLESS  
AUTHORIZED IN WRITING BY  
GARVER, LLC OR EXPLICITLY  
ALLOWED IN THE GOVERNING  
PROFESSIONAL SERVICES  
AGREEMENT FOR THIS WORK.

BY									
DESCRIPTION									
DATE									
REV									

BILL AND HILLARY CLINTON  
NATIONAL AIRPORT  
LITTLE ROCK, ARKANSAS 72206

FIRE SUPPRESSION  
IMPROVEMENTS

ELECTRICAL  
ONE-LINE DIAGRAMS -  
BUILDINGS 200 & 300

JOB NO.: 21A10111  
DATE: MAY 2, 2025  
DESIGNED BY: JHH  
DRAWN BY: JHH

BAR IS ONE INCH ON  
ORIGINAL DRAWING  
0 1"  
IF NOT ONE INCH ON THIS SHEET,  
ADJUST SCALES ACCORDINGLY.

DRAWING NUMBER  
**EP-602**

