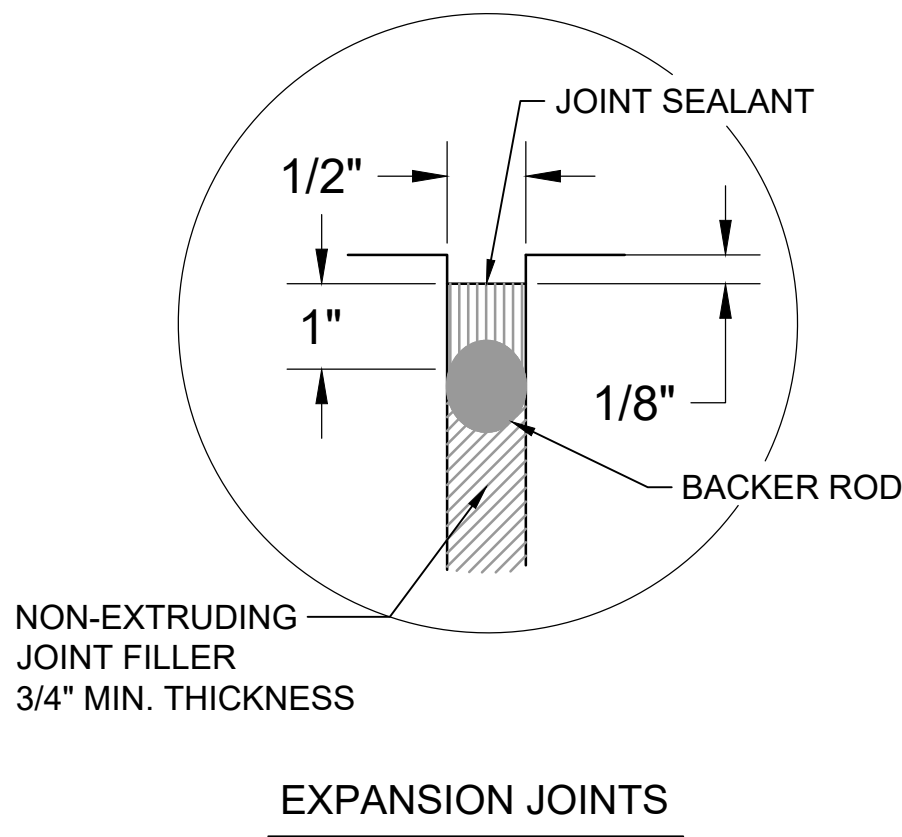
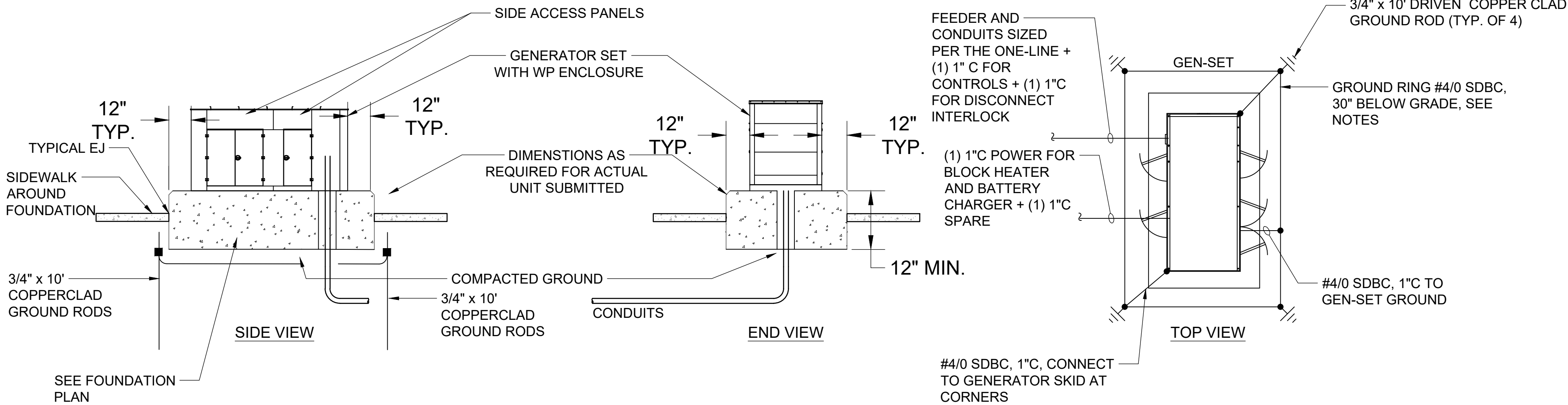


File: L:\2021\21A10111 - LIT Fire Suppression Improvements\Drawings\LIT_FS_IMP-EP501.dwg, Last Save: 4/22/2025 5:28 PM, Last Saved by: ICCrabtree, Last Plotted by: Crabtree, Iassac C. (Cooper) Plot Style: AECmono.ctb Plot Scale: 1:1 Plot Date: 5/2/2025 12:28 PM Plotter used: AutoCAD PDF (General Documentation).pc3



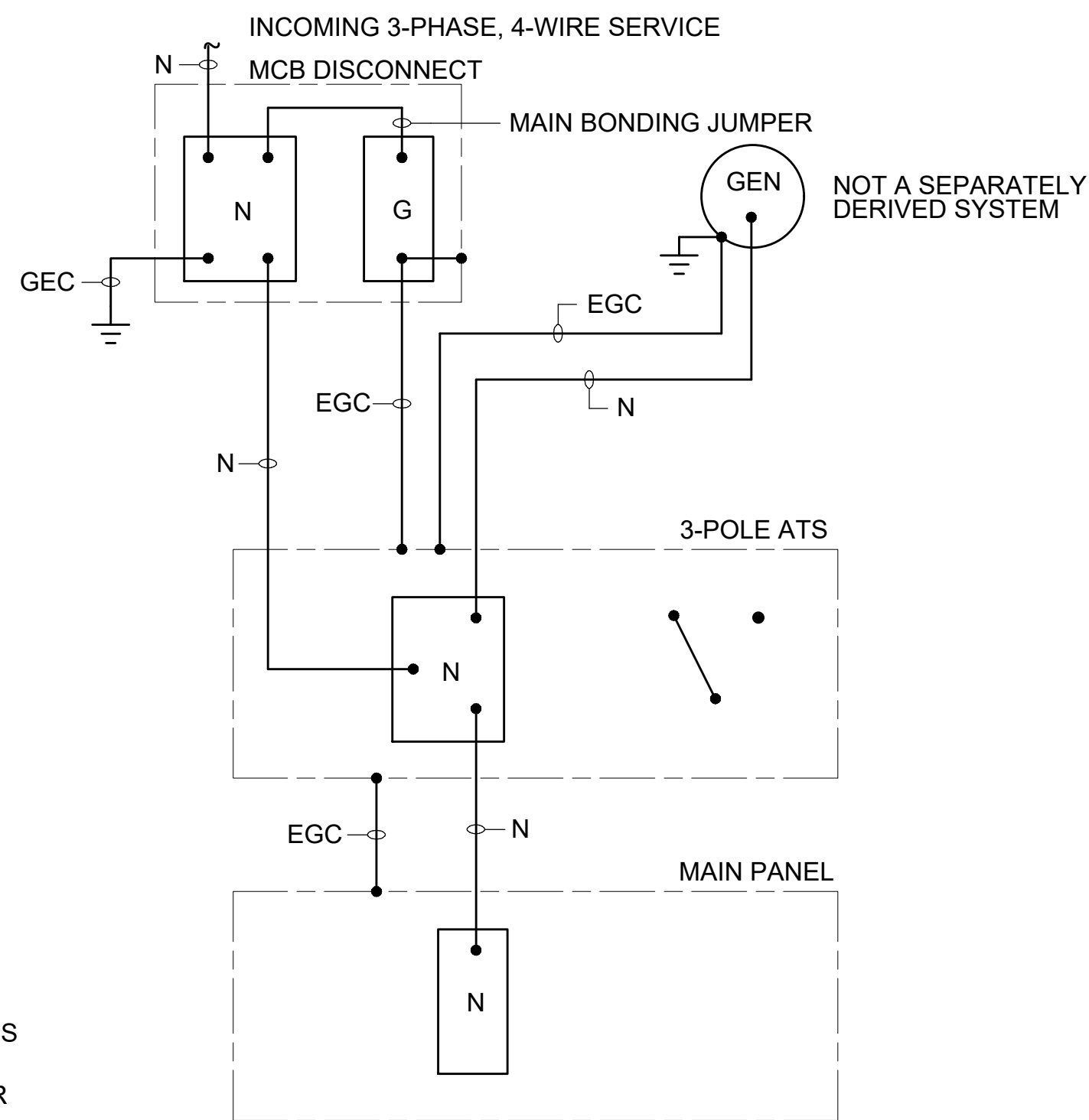
1
EP-502

GENERATOR INSTALLATION DETAIL

SCALE: NONE

NOTES:

- SUBMIT COMPLETE COORDINATED SHOP DRAWINGS FOR ALL EQUIPMENT, APPURTENANCES, AND GENERATOR FOUNDATION CONSTRUCTION AND LAYOUT. FOUNDATION PLAN SUBMITTAL SHALL BE STAMPED BY A STRUCTURAL ENGINEER REGISTERED IN THE STATE OF ARKANSAS.
- COORDINATE EXACT LOCATION FOR INTERIOR EQUIPMENT WITH SHOP DRAWINGS.
- SEE THE SPECIFICATIONS FOR TESTING AND COMMISSIONING REQUIREMENTS.
- FOR SIDEWALK CONSTRUCTION, TROWEL IN DUMMY JOINTS, EVENLY SPACED, NOT TO EXCEED 6 FEET BETWEEN JOINTS.
- INSTALL AN EXPANSION JOINT BETWEEN THE GENERATOR FOUNDATION AND THE SIDEWALK.



LEGEND

- N NEUTRAL
- EGC EQUIPMENT GROUNDING CONDUCTOR
- GEC GROUNDING ELECTRODE CONDUCTOR
- ⎓ GROUNDING ELECTRODE SYSTEM

3
EP-502

CIRCUIT GROUNDING SYSTEM

SCALE: NONE

SAFETY INSTRUCTIONS

EMERGENCY SHUT-OFF PROCEDURE FOR WEST VAULT

- REPORT EMERGENCY TO OPERATIONS AT 837-6641.
- TURN OFF GENERATOR POWER BY SWITCHING GENERATOR DISCONNECT TO OFF POSITION.
- TURN OFF UTILITY POWER BY SWITCHING MAIN DISCONNECT TO OFF POSITION.
- MAINTAIN CONTACT WITH OPERATIONS DURING THE EMERGENCY.

SAFETY INSTRUCTIONS

EMERGENCY SHUT-OFF PROCEDURE FOR ARFF

- REPORT EMERGENCY TO OPERATIONS AT 837-6641.
- TURN OFF GENERATOR POWER BY SWITCHING GENERATOR DISCONNECT TO OFF POSITION.
- TURN OFF UTILITY POWER BY SWITCHING MAIN DISCONNECT TO OFF POSITION.
- MAINTAIN CONTACT WITH OPERATIONS DURING THE EMERGENCY.

2
EP-502

POWER SHUT-OFF PROCEDURE SIGNAGE

SCALE: NONE

GENERAL NOTES:

- INSTALL ALL NAMEPLATES AND WARNING SIGNS IN ACCORDANCE WITH NEC AND NFPA 70E REQUIREMENTS.
- NEW SIGN SYSTEMS SHALL COMPLY WITH THE CURRENT EDITIONS OF OSHA/ANSI Z535 SAFETY SIGN AND TAG STANDARDS THAT INCLUDE USING THE SAFETY ALERT SYMBOL, SIGNAL WORDS FOR HAZARD ALERTING SAFETY MESSAGES, SIGNAL WORDS FOR NON-HAZARD ALERTING SAFETY MESSAGES, SIGNAL WORDS FOR INSTRUCTIONAL SAFETY MESSAGES, ISO-FORMATTED GRAPHICAL SYMBOLS, AND CLEAR, CONCISE TEXT MESSAGES.
- EXTERIOR EQUIPMENT SHALL HAVE WEATHER-RESISTANT, NON-FADING NAMEPLATES AND SIGNAGE.
- REFER TO SPECIFICATIONS FOR ADDITIONAL NAMEPLATE AND SIGNAGE REQUIREMENTS.



© 2025 GARVER, LLC
THIS DOCUMENT, ALONG WITH THE IDEAS AND DESIGNS CONVEYED HEREIN, SHALL BE CONSIDERED INSTRUMENTS OF PROFESSIONAL SERVICE AND ARE PROPERTY OF GARVER, LLC. ANY USE, REPRODUCTION, OR DISTRIBUTION OF THIS DOCUMENT, ALONG WITH THE IDEAS AND DESIGN CONTAINED HEREIN, IS PROHIBITED UNLESS AUTHORIZED IN WRITING BY GARVER, LLC OR EXPLICITLY ALLOWED IN THE GOVERNING PROFESSIONAL SERVICES AGREEMENT FOR THIS WORK.



Digitally Signed 05/02/2025

BY									
DESCRIPTION									
DATE									
REV									

BILL AND HILLARY CLINTON
NATIONAL AIRPORT
LITTLE ROCK, AR 72206

FIRE SUPPRESSION
IMPROVEMENTS

ELECTRICAL
DETAILS 2

JOB NO.: 21A10111
DATE: MAY 2025
DESIGNED BY: NAH
DRAWN BY: ICC

BAR IS ONE INCH ON ORIGINAL DRAWING
0 1"
IF NOT ONE INCH ON THIS SHEET, ADJUST SCALES ACCORDINGLY.

DRAWING NUMBER
EP-502