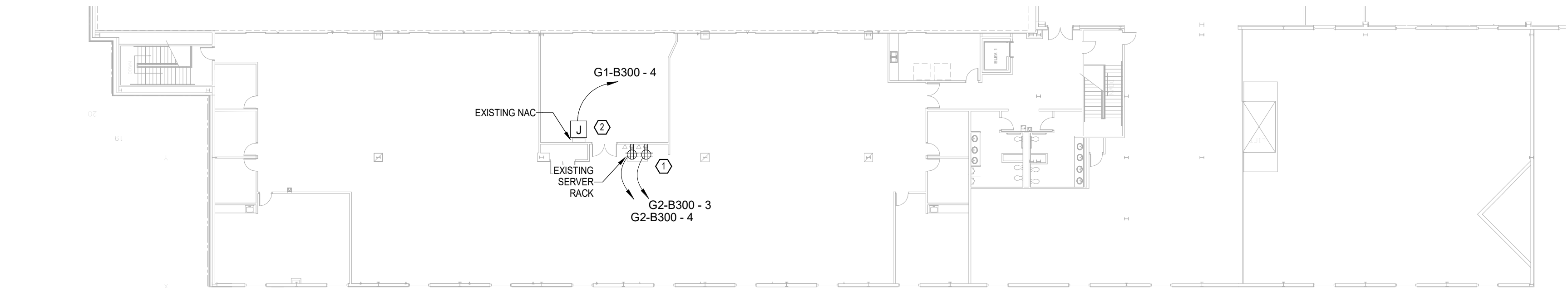


Revit File: Autodesk Docs\21A10111 - LIT Fire Suppression Improvements\23-065 LIT ABP Fire Suppression MEP Model V23.rvt
Plot Date: 5/2/2025 8:01:39 AM



1 BUILDING 300 - ELECTRICAL 2ND FLOOR PLAN
3/64" = 1'-0"

GENERAL NOTES

- COORDINATE WITH ALL OTHER DISCIPLINES FOR NEW AND EXISTING UNDERGROUND CONDITIONS PRIOR TO EXCAVATION. RE: CIVIL PLANS
- ROUTE CONDUIT TIGHT TO STRUCTURE, PERPENDICULAR AND PARALLEL TO STRUCTURAL BRACING. MOUNT ABOVE CEILING WHERE APPLICABLE.
- COORDINATE WITH FIRE SUPPRESSION PLANS FOR FINAL LOCATION OF ALL FIRE SUPPRESSION DEVICES PRIOR TO ELECTRICAL ROUGH-IN.
- CONTRACTOR SHALL REMOVE AND REMOUNT ALL HVAC AND ELECTRICAL DEVICES IN ROOMS WHERE THE CEILING WILL BE REPLACED. COORDINATE WITH ARCHITECTURAL PLANS.

KEYED NOTES

- ① EXISTING SERVER RECEPTACLES TO REMAIN ENERGIZED. PROVIDE NEW STANBY EMERGENCY POWER OUTLETS FOR SERVER RACK.
- ② REMOVE FIRE ALARM NAC EXTENDER CIRCUIT AND CONDUIT BACK TO SOURCE PANELBOARD. FIELD TRACE PRIOR TO REMOVAL. EXISTING EQUIPMENT SHALL REMAIN FOR CONNECTION TO NEW CIRCUITRY.



© 2025 GARVER, LLC
THIS DOCUMENT, ALONG WITH THE IDEAS AND DESIGNS CONVEYED HEREIN, SHALL BE CONSIDERED INSTRUMENTS OF PROFESSIONAL SERVICE AND ARE PROPERTY OF GARVER, LLC. ANY USE, REPRODUCTION, OR DISTRIBUTION OF THIS DOCUMENT, ALONG WITH THE IDEAS AND DESIGN CONTAINED HEREIN, IS PROHIBITED UNLESS AUTHORIZED IN WRITING BY GARVER, LLC OR EXPLICITLY ALLOWED IN THE GOVERNING PROFESSIONAL SERVICES AGREEMENT FOR THIS WORK.

BY									
DESCRIPTION									
DATE									
REV									

**BILL AND HILLARY CLINTON
NATIONAL AIRPORT
LITTLE ROCK, ARKANSAS 72206**

**FIRE SUPPRESSION
IMPROVEMENTS**

**BUILDING 300 -
ELECTRICAL 2ND
FLOOR PLAN**

JOB NO.: 21A10111
DATE: MAY 2, 2025
DESIGNED BY: JHH
DRAWN BY: JHH

BAR IS ONE INCH ON
ORIGINAL DRAWING
0 1"
IF NOT ONE INCH ON THIS SHEET,
ADJUST SCALES ACCORDINGLY.

DRAWING NUMBER
EP-105

