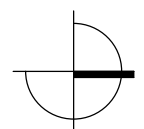
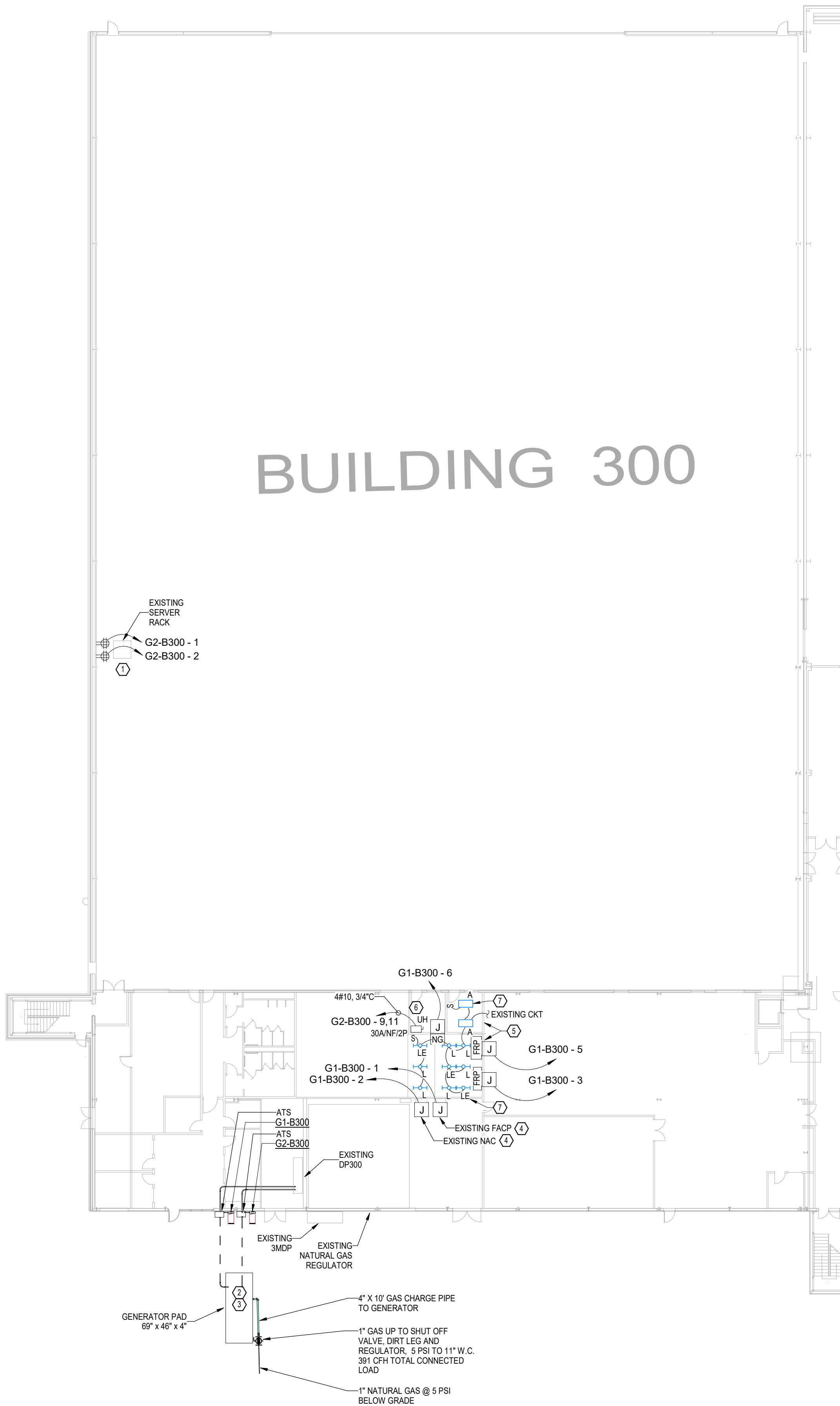


P  
N  
M  
L  
K  
J  
H  
G  
F  
E  
D  
C  
B  
A

1 2 3 4 5 6 7 8 9 10 11 12 13 14 15 16 17 18 19 20



1

**BUILDING 300 - ELECTRICAL FIRST FLOOR PLAN**  
3/64" = 1'-0"

**GENERAL NOTES**

- COORDINATE WITH ALL OTHER DISCIPLINES FOR NEW AND EXISTING UNDERGROUND CONDITIONS PRIOR TO EXCAVATION. RE: CIVIL PLANS
- ROUTE CONDUIT TIGHT TO STRUCTURE, PERPENDICULAR AND PARALLEL TO STRUCTURAL BRACING. MOUNT ABOVE CEILING WHERE APPLICABLE.
- COORDINATE WITH FIRE SUPPRESSION PLANS FOR FINAL LOCATION OF ALL FIRE SUPPRESSION DEVICES PRIOR TO ELECTRICAL ROUGH-IN.
- CONTRACTOR SHALL REMOVE AND REMOUNT ALL HVAC AND ELECTRICAL DEVICES IN ROOMS WHERE THE CEILING WILL BE REPLACED. COORDINATE WITH ARCHITECTURAL PLANS.

**KEYED NOTES**

- EXISTING SERVER RECEPTACLES TO REMAIN ENERGIZED. PROVIDE NEW STANBY EMERGENCY POWER OUTLETS FOR SERVER RACK.
- PROVIDE GENERATOR PAD WITH NEW GENERATOR. COORDINATE WITH MANUFACTURER SPECIFICATIONS AND CIVIL ENGINEER.
- LOCATION OF GENERATOR PAD IS BASED ON AS BUILT DOCUMENTATION. CONTRACTOR SHALL SURVEY BELOW GRADE PRIOR TO EXCAVATION. COORDINATE WITH ENGINEER FOR RELOCATION OF PAD AS NECESSARY TO AVOID ALL OTHER UTILITIES. INSTALLING THE GENERATOR IN AN ALTERNATE LOCATION DUE TO UNFORSEEN CONDITIONS SHALL BE AT NO COST TO THE OWNER.
- REMOVE FIRE ALARM CONTROL PANEL AND NAC EXTENDER CIRCUIT AND CONDUIT BACK TO SOURCE PANELBOARD. FIELD TRACE PRIOR TO REMOVAL. EXISTING EQUIPMENT SHALL REMAIN FOR CONNECTION TO NEW CIRCUITRY.
- REMOVE ALL EXISTING LIGHTING FIXTURES. WIRE AND CONDUIT BACK TO NEAREST JUNCTION BOX IN ROOM THAT WILL HAVE DEMOLISHED WALLS. COORDINATE WITH ARCHITECTURAL PLANS FOR SCOPE OF DEMOLITION, TYPICAL.
- PROVIDE ELECTRIC CONNECTION TO 5KW UNIT HEATER LOCATED IN FIRE RISER ROOM.
- PROVIDE NEW LIGHT FIXTURES WITHIN INDICATED ROOM. CONNECT TO NEAREST LIGHTING CIRCUITRY. TYPE LILE TO BE LITHONIA CSS L48 4000LM MVOLT 35K 80CRI E7WCP. TYPE AAE TO BE CPX 2x4 4000LM 80CRI 35K SWL MIN10 ZT MVOLT E10WLCP, TYPICAL.



© 2025 GARVER, LLC  
THIS DOCUMENT, ALONG WITH THE IDEAS AND DESIGNS CONVEYED HEREIN, SHALL BE CONSIDERED INSTRUMENTS OF PROFESSIONAL SERVICE AND ARE PROPERTY OF GARVER, LLC. ANY USE, REPRODUCTION, OR DISTRIBUTION OF THIS DOCUMENT, ALONG WITH THE IDEAS AND DESIGN CONTAINED HEREIN, IS PROHIBITED UNLESS AUTHORIZED IN WRITING BY GARVER, LLC OR EXPLICITLY ALLOWED IN THE GOVERNING PROFESSIONAL SERVICES AGREEMENT FOR THIS WORK.

REV	DATE	DESCRIPTION	BY

**BILL AND HILLARY CLINTON  
NATIONAL AIRPORT  
LITTLE ROCK, ARKANSAS 72206**

**FIRE SUPPRESSION  
IMPROVEMENTS**

**BUILDING 300 -  
ELECTRICAL FIRST  
FLOOR PLAN**

**JOB NO.: 21A10111  
DATE: MAY 2, 2025  
DESIGNED BY: JHH  
DRAWN BY: JHH**

BAR IS ONE INCH ON  
ORIGINAL DRAWING  
0 1"  
IF NOT ONE INCH ON THIS SHEET,  
ADJUST SCALES ACCORDINGLY.

**DRAWING NUMBER  
EP-104**

