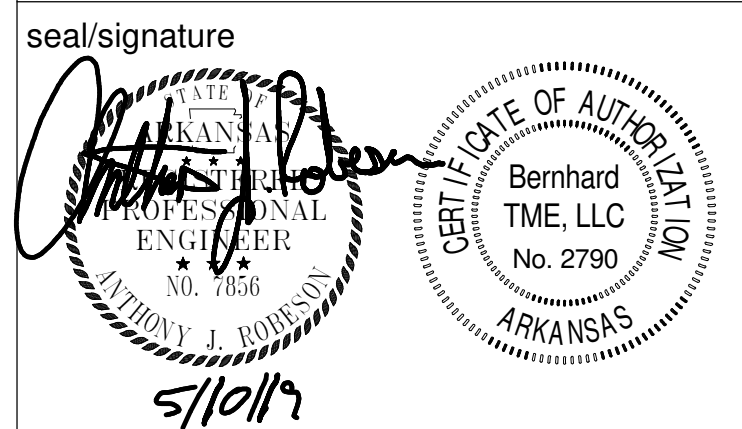


Lead Architect:
Stocks-Mann Architects, PLC
401 W. Capitol, Suite 401
Little Rock, AR 72201
501-370-9207

Associate Architect:
Woods Group Architects
2200 Main Street
Little Rock, AR 72206
501-372-2230

Structural Engineer:
Bernhard TME
1 Allied Drive, Suite 2600
Little Rock, AR 72202
501-666-6676

MEP/Fire Protection Engineer:
Bernhard TME
1 Allied Drive, Suite 2600
Little Rock, AR 72202
501-666-6776



No.	Description	Date

UCA Housing Renovations - Phase 2 State Hall

University of Central Arkansas
Conway, Arkansas

SMA Project Number 1807

Date 05-10-2019

Phase Construction Drawings

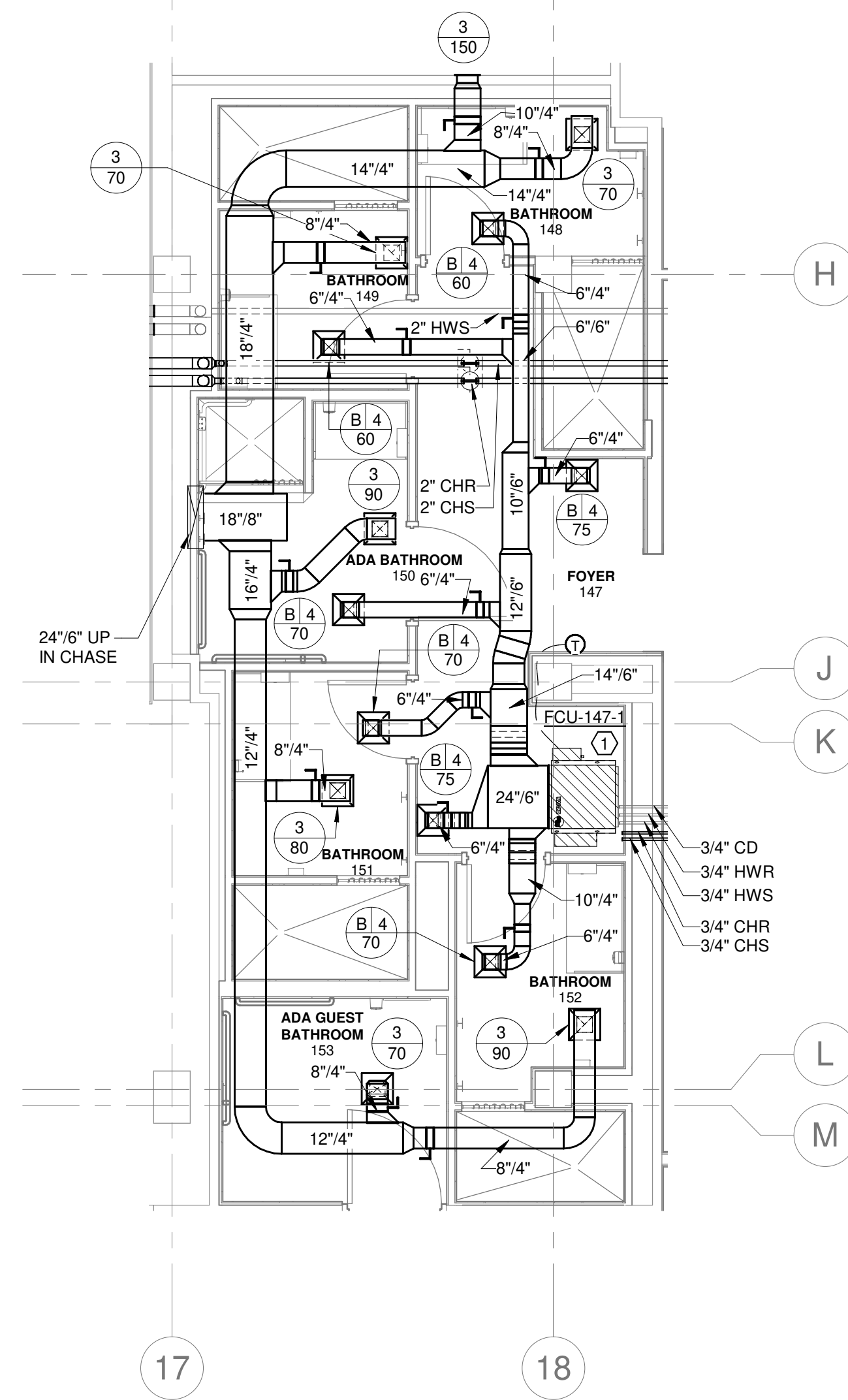
UCA Project Number UCA-19-021

Contents

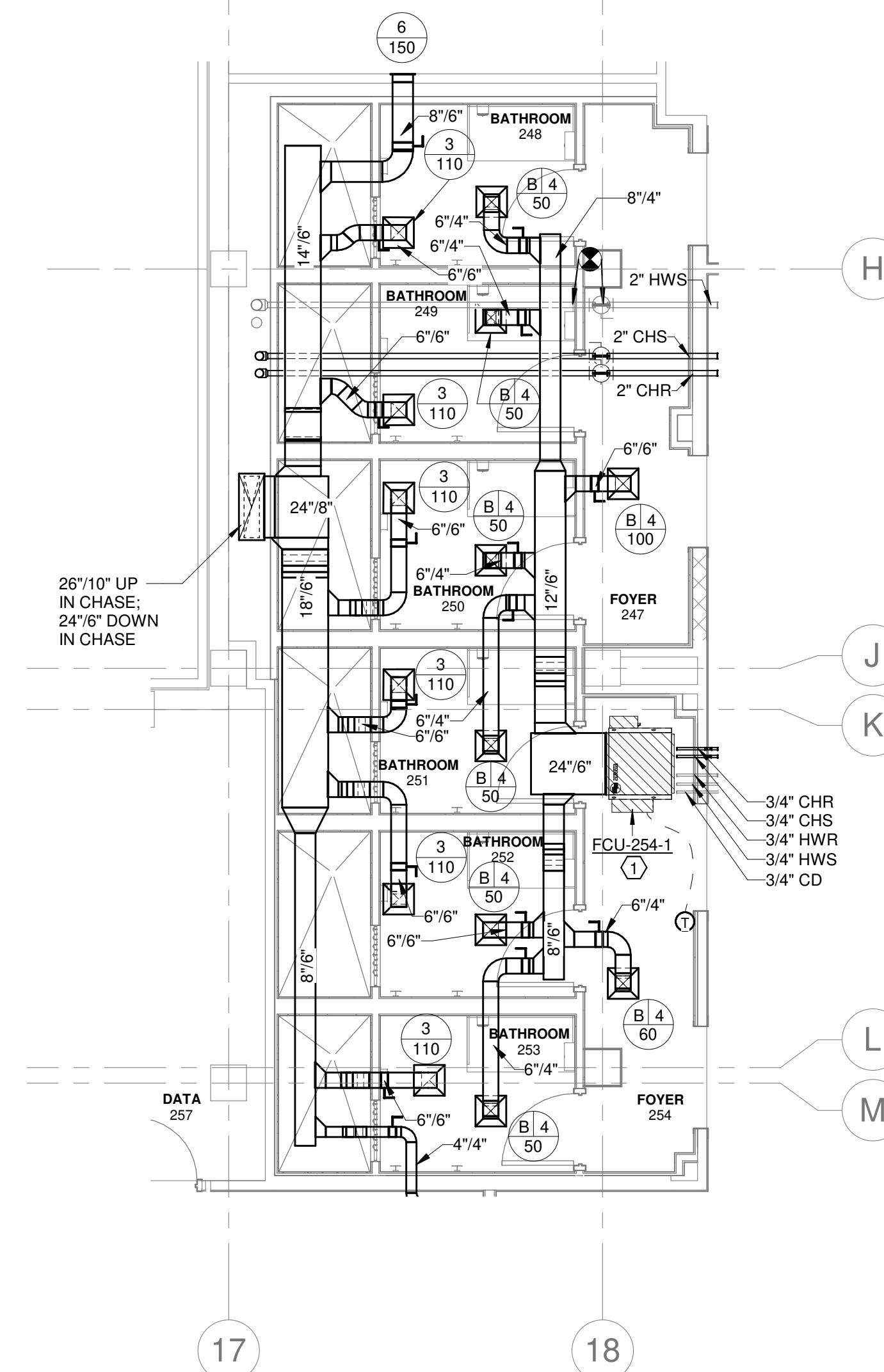
ENLARGED FLOOR PLANS - HVAC

Sheet Number

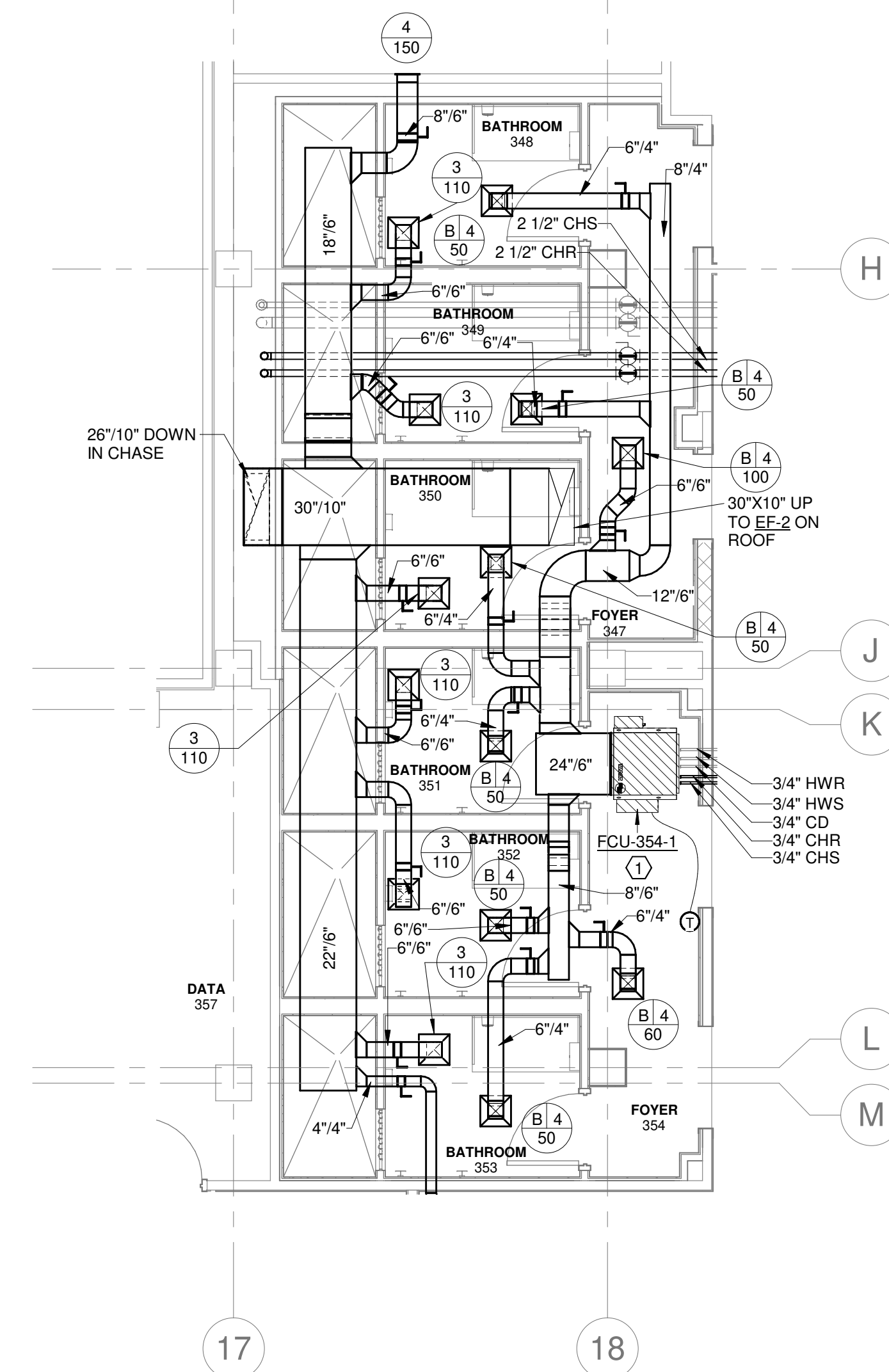
M3.1



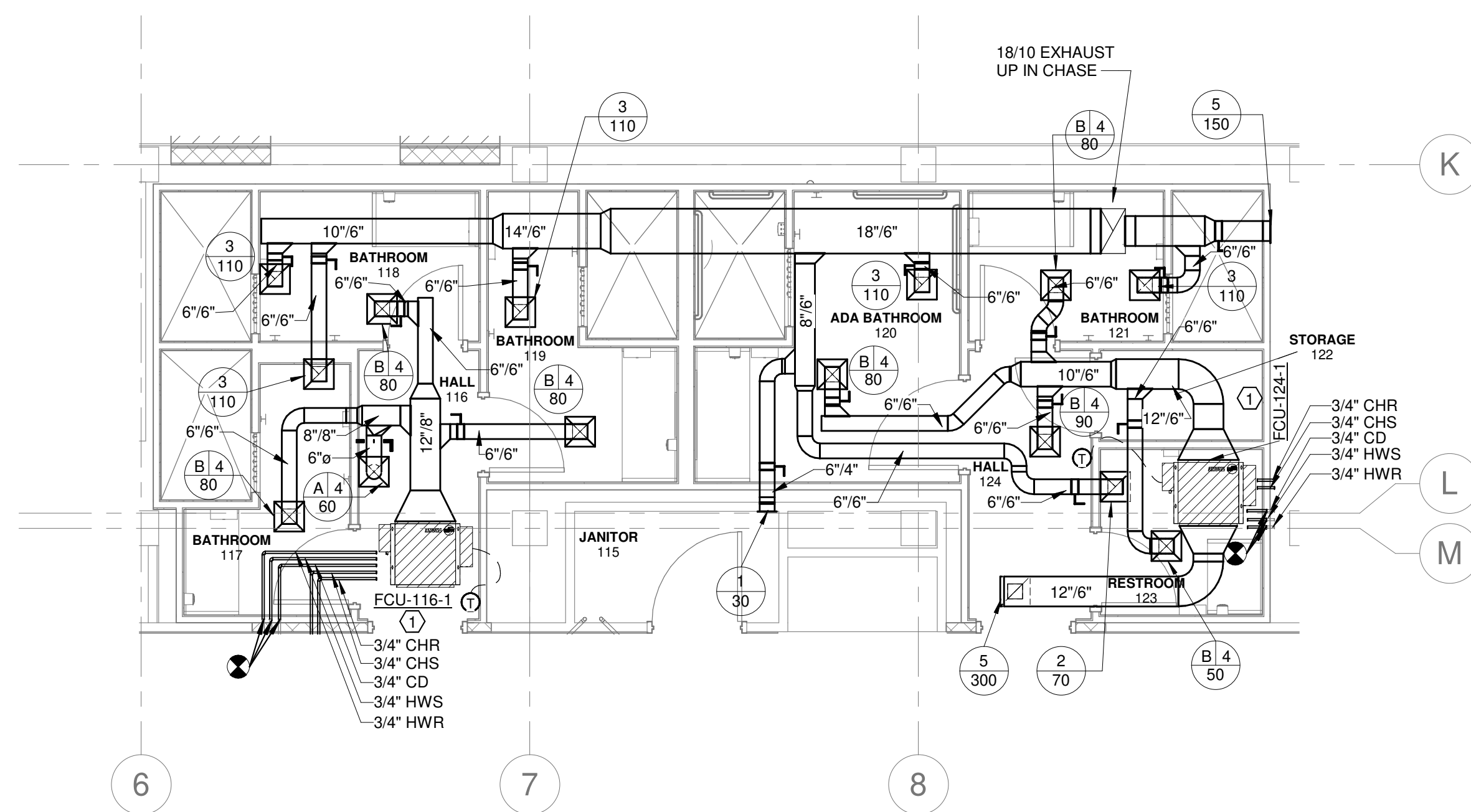
1 1ST FLR NORTH BATHROOM FLOOR PLAN - HVAC
1/4" = 1'-0"



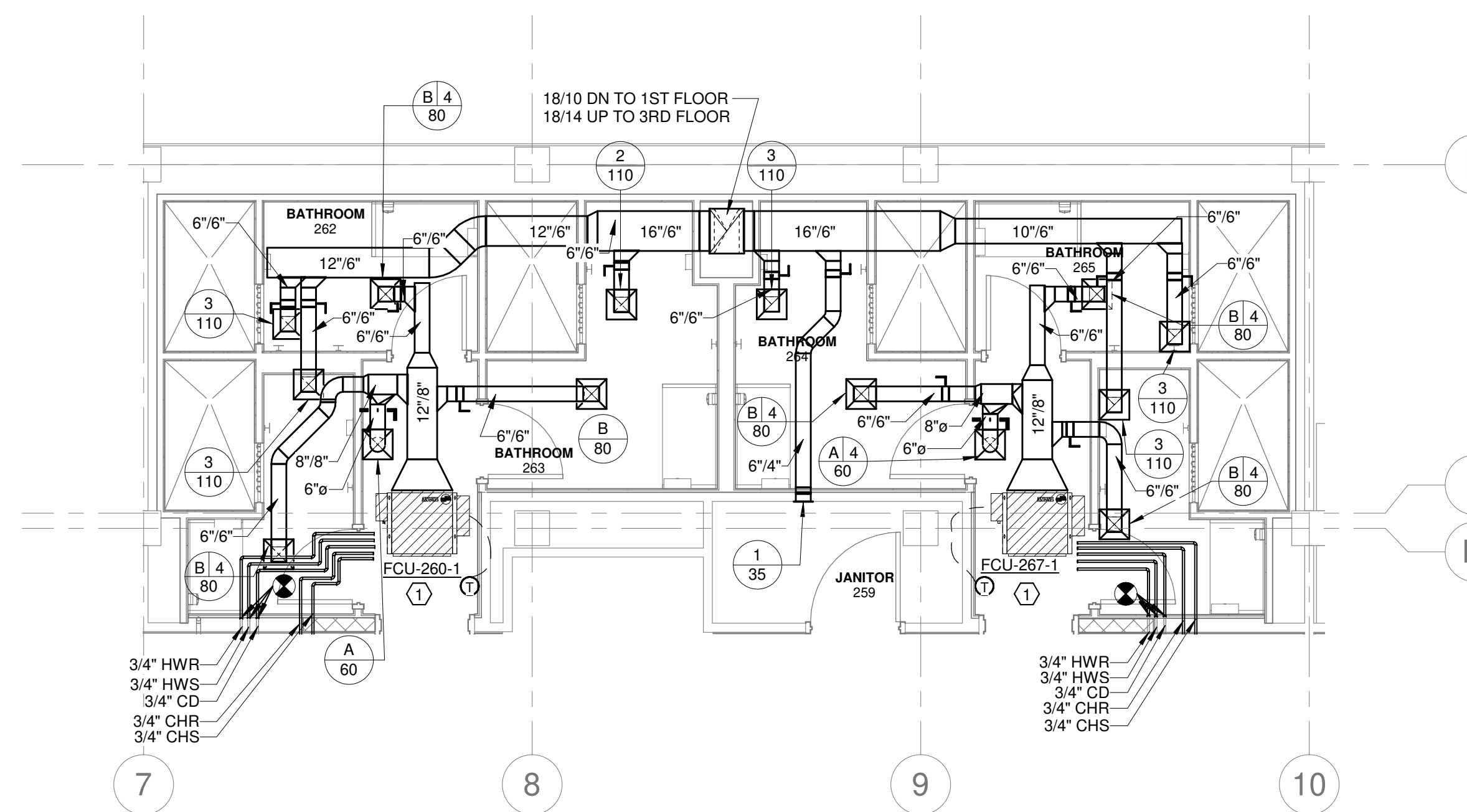
2 2ND FLR NORTH BATHROOM FLOOR PLAN - HVAC
1/4" = 1'-0"



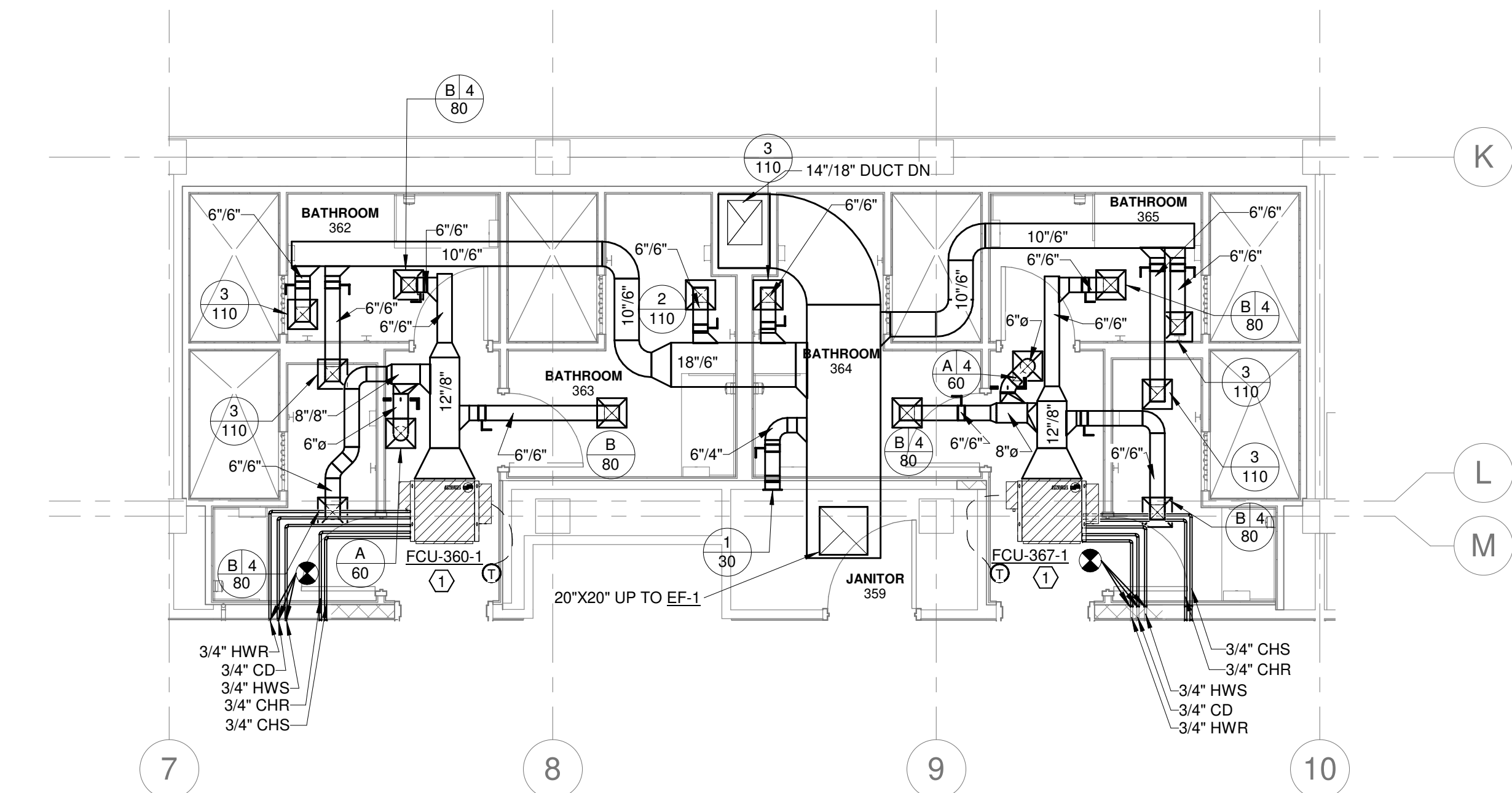
3 3RD FLR NORTH BATHROOM FLOOR PLAN - HVAC
1/4" = 1'-0"



4 1ST FLR SOUTH BATHROOM FLOOR PLAN - HVAC
1/4" = 1'-0"



5 2ND FLR SOUTH BATHROOM FLOOR PLAN - HVAC
1/4" = 1'-0"



6 3RD FLR SOUTH BATHROOM FLOOR PLAN - HVAC
1/4" = 1'-0"

KEYED NOTES:

- 1. EXTEND CONDENSATE, HEATING WATER SUPPLY, AND HEATING WATER RETURN TO NEW LOCATION OF FAN COIL UNIT. PROVIDE 3/4 INCH CHILLED WATER SUPPLY & CHILLED WATER RETURN TO FAN COIL UNIT FROM MAIN CHILLED WATER SUPPLY & RETURN PIPING IN CORRIDOR.

GENERAL NOTES

- 1. PROTECT EXISTING BUILDING COMPONENTS TO REMAIN, SUCH AS BUT NOT LIMITED TO, TELECOMMUNICATIONS CABLING AND EQUIPMENT, CONDUIT, PIPING, INSULATION, ELECTRICAL DEVICES AND DATA JACKS FROM DAMAGE, DEBRIS, DUST AND LOSS OF USE DURING ALL PHASES OF CONSTRUCTION. COMPONENTS THAT ARE DAMAGED OR BECOME DIRTY DURING THE CONSTRUCTION PHASE ARE TO BE REPLACED OR CLEANED TO ORIGINAL CONDITION AT NO ADDITIONAL COST TO THE OWNER.
- 2. NOTIFY ENGINEER OF RECORD OF ANY CONDITIONS THAT DO NOT MATCH THOSE INDICATED THAT WILL AFFECT THE NEW WORK TO BE PERFORMED.
- 3. INSTALL FIRE DAMPERS PER FIRE DAMPER MANUFACTURER'S INSTRUCTIONS.
- 4. COORDINATE ALL ROOF AND FLOOR PENETRATIONS WITH STRUCTURAL DRAWINGS.