

*Quality People. Building Solutions.*

Comfort Systems USA (Arkansas), Inc.  
P.O. Box 16620  
Little Rock, AR 72231  
Phone 501-834-3320  
Fax 501-834-5416

**Date:** 3/13/2024

**Return Request:** 3/23/2024

**Project:** Stone Bank HQ - Chenal

**Supplier:** Sanders Supply

**Manufacturer:** Various

**Submittal:** Plumbing Fixtures

**Submittal Number:** 22 00 00-01

**Drawing # and Installation:** Plumbing Drawings

**ARCHITECT**

WDD Architects  
5050 Northshore Lane  
N. Little Rock, AR 72118  
501-376-6681

**ENGINEER**

Batson Inc.  
1300 Brookwood Dr.  
Little Rock, AR 72202  
501-664-3311

**GENERAL CONTRACTOR**

East Harding  
2230 Cottondale Lane #3  
Little Rock, AR 72202  
501-661-1646

**MECHANICAL SUBCONTRACTOR**

Comfort Systems USA (Arkansas), Inc.  
9924 Landers Rd.  
N. Little Rock, AR 72117  
501-834-3320

Notes:

--

[dpierce@comfortar.com](mailto:dpierce@comfortar.com)

9924 Landers Rd.  
No. Little Rock, AR 72117

**P-1**



## Madera™ FloWise® 15" Height Elongated Flushometer Toilet

VITREOUS CHINA LESS EVERCLEAN®

### Madera™ FloWise® 15" Height Elongated LESS EverClean®

- Floor mount flushometer valve toilet
- Vitreous china
- High Efficiency, Low Consumption. Operates in the range of 1.1 gpf to 1.6 gpf (4.2 Lpf to 6.0 Lpf)
- Meets definition of HET (High Efficiency Toilet) when used with a high efficiency flush valve (1.28 gpf or 1.6 / 1.1 gpf dual flush)
- Fully glazed 2-1/8" trapway
- Elongated bowl
- 10" or 12" roughing-in
- 15" rim height
- Condensation channel
- Powerful direct-fed siphon jet action
- 10" x 12" water surface area
- 1-1/2" inlet spud
- 2 bolt caps

- ☐ **2234.001** Elongated bowl only, top spud
- ☐ ~~2623.001~~ Elongated bowl only, top spud with slotted rim for bedpan holding
- ☐ **2624.001** Elongated bowl only, back spud

#### System MaP\* Score:

- 1,000 grams of miso @ 1.1 gpf, 1.28 gpf or 1.6 gpf when used with an American Standard flush valve

\* Maximum Performance (MaP) testing performed by IAPMO R&T Lab. MaP Report conducted by Veritec Consulting, Inc. and Koeller and Company.

#### Component Parts:

- ☐ **047007-0070A** Inlet Spud (furnished with bowl)
- ☐ **481310-100** Bolt caps with retainers (furnished with bowl)

#### Nominal Dimensions:

718 x 356 x 381mm  
(28-1/4" x 14" x 15")

Fixture only, less seat and flush valve

Recommended working pressure—between  
25 psi at valve when flushing and 80 psi static

#### Compliance Certifications -

##### Meets or Exceeds the Following Specifications:

- ASME A112.19.2 / CSA B45.1 for Vitreous China Fixtures



SEE REVERSE FOR ROUGHING-IN DIMENSIONS

#### To Be Specified:

- ☐ Color: ☒ White
- ☐ Seat:
  - ☐ American Standard #5901.100 Heavy duty open front less cover
  - ☐ American Standard #5905.100 Extra heavy duty open front less cover
- ☐ Flushometer Valve:
  - ☐ 1.6 gpf:
    - ☐ Sensor-Operated: American Standard Selectronic® DC Power #6065.161.002 (Top Spud)
    - ☐ Sensor-Operated: American Standard Selectronic® AC Power #6067.261.002 (Back Spud)
    - ☐ Manual: American Standard #6047.161.002 (Top Spud)
  - ☐ 1.28 gpf:
    - ☐ Sensor-Operated: American Standard Selectronic® DC Power #6065.121.002 (Top Spud)
    - ☐ Sensor-Operated: American Standard Selectronic® AC Power #6067.221.002 (Back Spud)
    - ☐ Manual: American Standard #6047.121.002 (Top Spud)
  - ☐ 1.6 / 1.1 gpf Dual Flush:
    - ☐ Sensor-Operated: American Standard Selectronic® DC Power #6065.761.002 (Top Spud)



ENVIRONMENTAL  
PRODUCT  
DECLARATION

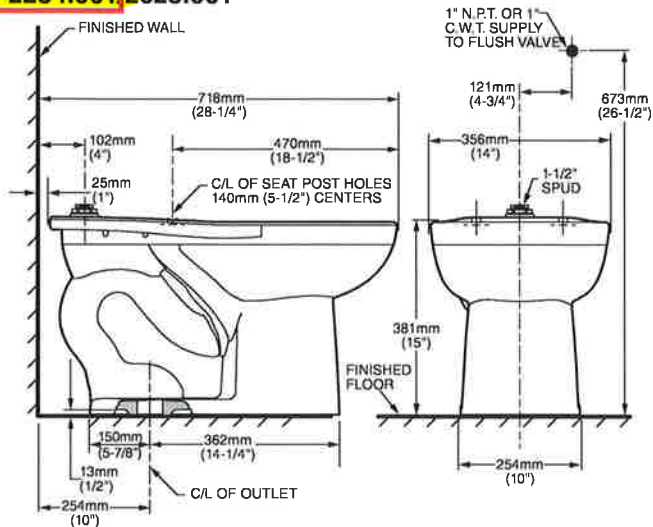


When used with  
1.1 or 1.28 gpf  
toilet flush valves

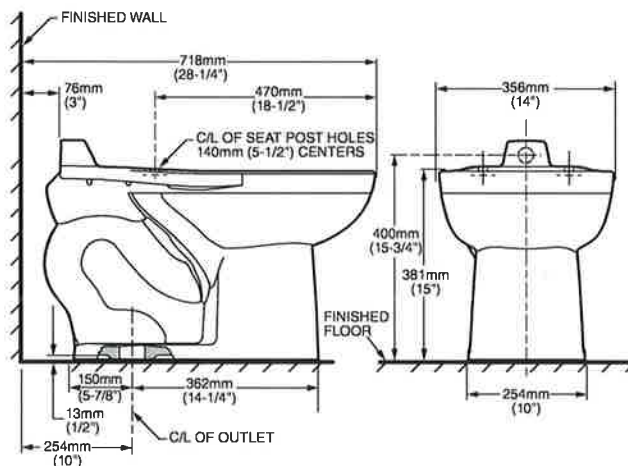


WATER  
EFFICIENT

**2234.001/2623.001**



**2624.001**



**NOTES:**

PRODUCT 2234 SHOWN, 2623 SAME EXCEPT WITH SLOTTED RIM FOR BED PAN HOLDING.  
TO COMPLY WITH AREA CODE GOVERNING THE HEIGHT OF VACUUM BREAKER ON THE FLUSHOMETER VALVE, THE PLUMBER MUST VERIFY DIMENSIONS SHOWN FOR SUPPLY ROUGHING.  
THIS TOILET DESIGNED TO ROUGH-IN AT A MINIMUM DIMENSION OF 254MM (10") AND A MAXIMUM DIMENSION OF 305MM (12") FROM FINISHED WALL TO C/L OF OUTLET.  
FLUSHOMETER VALVE NOT INCLUDED WITH FIXTURE AND MUST BE ORDERED SEPARATELY. FLUSHOMETER VALVE REQUIREMENTS FOR 12" (305MM) ROUGH-IN: SWEAT EXTENSION NIPPLE IS REQUIRED. REFER TO VALVE MANUFACTURER AND LOCAL CODES.

**IMPORTANT:** Dimensions of fixtures are nominal and may vary within the range of tolerances established by ANSI Standard A112.19.2. These measurements are subject to change or cancellation. No responsibility is assumed for use of superseded or voided pages.



## ZEMS6000AV-IS

Exposed Hardwired Automatic Sensor Flush Valve  
for Water Closets

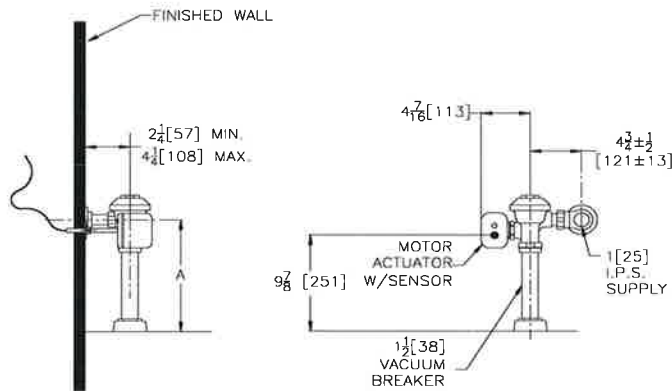
TAG P-1

### Architectural/Engineering Specification:

Exposed, quiet diaphragm-type, chrome plated flushometer valve with a polished exterior. Complete with Zurn's AquaVantage® TPE, chlorine resistant, dual seal diaphragm with a clog resistant, triple filtered bypass. The valve incorporates a 6 VDC motor actuator, an integral infrared convergence-type proximity sensor and a manual push button override, high impact resistant polycarbonate housing and chrome plated plastic cover with manual override push button and 10 degree angled sensor.

### Product Features:

- Proprietary dezincification resistant low lead brass alloy
- Control stop has internal siphon-guard protection and vandal resistant stop cap, sweat solder kit, wall flange with set screw
- High back pressure vacuum breaker with one piece hex coupling nut
- Chloramine resistant Internal seals
- Adjustable tailpiece
- Spud coupling and flange for top spud connection



Rough-in/Overview dimensions

### Accessories (Order separate as specified)

**P6900-ACA-BA** 7.6VDC Plug-In ACA Power Supply

Powers up to 4 valves

**P6000-HW6** 7.6VDC Hardwired Power Converter  
Powers up to 8 valves

**P6000-MJ** Mini Junction Box

NOTE: Must use either Zurn P6000-HW6 hardware power converter or P6900-ACA-BA regulated plug in to ensure proper operation. Using a power converter other than Zurn may result in operation malfunction or unit failure.

### Compliance and Certification:

- ADA Compliant
- Complies with ASSE 1037/ASME A112.1037/CSA



### Flow Options:

	Flush Volume	WaterSense Compliant
<input type="checkbox"/> -ONE*	1.1 gpf	✓
<input checked="" type="checkbox"/> -HET*	1.28 gpf	✓
<input type="checkbox"/> -WS1	1.6 gpf	
<input type="checkbox"/> -Standard	3.5 gpf	

\*Clog-resistant linear filter

### Suffix Options:

- ☐ -FM12 Floor Mount 12" Rough In
- ☐ -MOB Manual Over-ride Button (Front of Body)
- ☐ -YJ Split Ring Pipe Support
- ☐ -YK Solid Ring Pipe Support
- ☐ -YO Bumper on Angle Stop

### Valve Height Options:

	Product No.	A
<input checked="" type="checkbox"/>	ZEMS6000AV-IS	11 1/2" [292]
<input type="checkbox"/>	ZEMS6000AV-1-IS	16" [406]
<input type="checkbox"/>	ZEMS6000AV-2	24" [610]

### Architectural/Engineering Approval

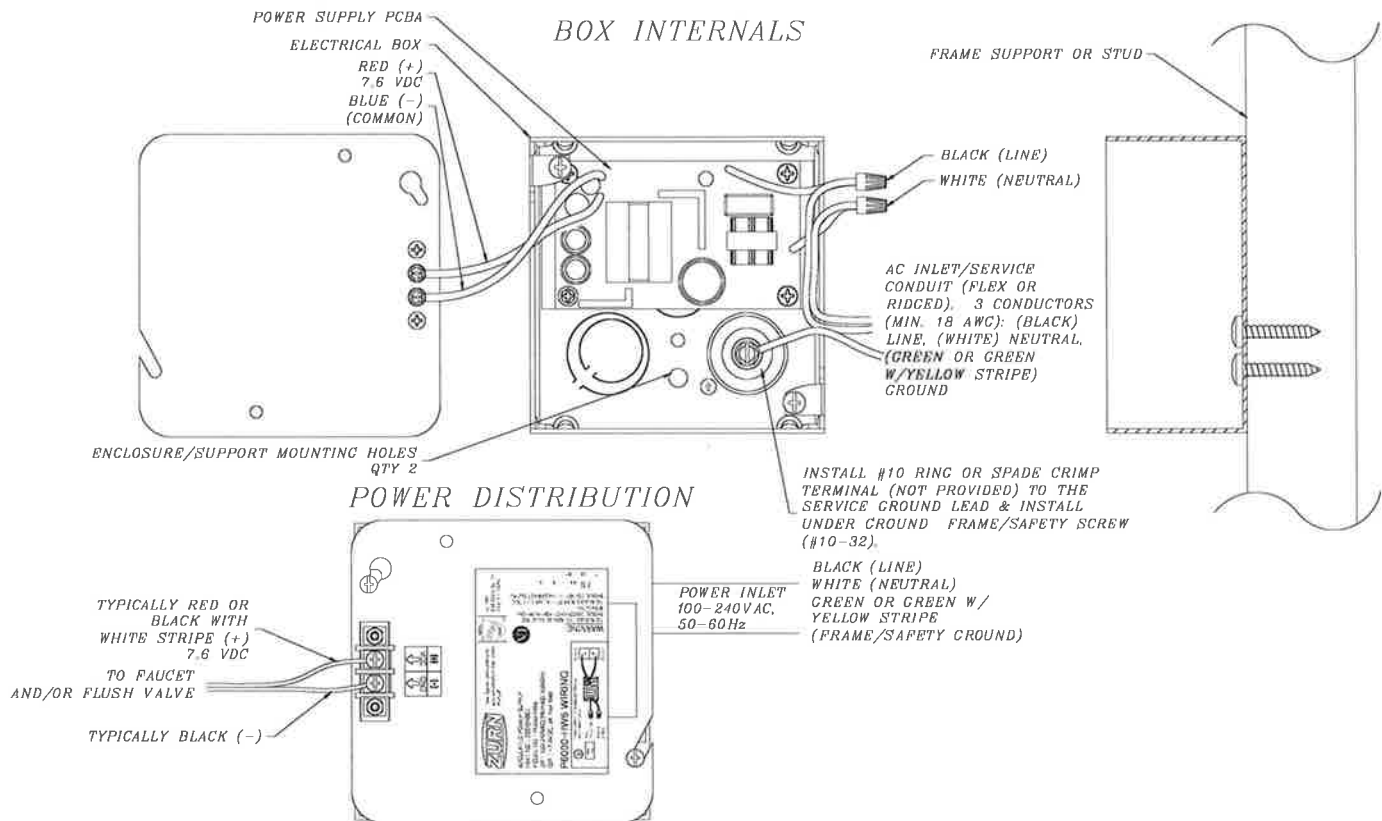
The information contained in this document is subject to change without notice.  
Please contact Zurn for most up to date information.

This product should be used with a WaterSense labeled counterpart with a compatible flow volume to ensure that the entire system meets the requirements for water efficiency and performance.



## P6000-HW6

### 7.6 VDC Hardwired Power Converter for Flush Valves and Faucets



**ENGINEERING SPECIFICATION: ZURN P6000-HW6 Power Converter** - The Hardwired Power Converter is a 7.6 VDC regulated, 2.0A power supply that will operate up to: (8) ZEMS or ZEMS-IS Sensors/Actuators, (8) ZESS Sensors/Solenoids, (8) sensor faucets, or (8) Pint Urinal valves. The unit shown above is integrated into a 4"L x 4"W x 2-1/8"D electrical box. The AC input connections are terminated within the electrical box. The 7.6 VDC output terminals are externally mounted to the cover plate.

**Notes:**

1. Mounting hardware (AC inlet conduit/cable clamp and enclosure-frame mounting screws) are NOT provided.

**Typical Rough-In:** The 3 input conductors (line, neutral and frame ground) are routed within conduit to the P6000-HW6 and the AC inlet and the frame/safety ground leads are terminated within the assembly. The low voltage, 7.6 DC, output connections are terminated externally and depending upon the installation area, appropriate cable/conductor insulation must be selected to meet local codes (conduit not required for the low voltage output conductor paths).

**Architectural/Engineering Approval**

The information contained in this document is subject to change without notice.  
Please contact Zurn for most up to date information.

ZURN INDUSTRIES, LLC. ♦ COMMERCIAL BRASS OPERATION ♦ 5900 ELWIN BUCHANAN DRIVE ♦ SANFORD NC 27330

Phone: 1-800-997-3876 ♦ Fax: 919-775-3541 ♦ World Wide Web: [www.zurn.com](http://www.zurn.com)

In Canada: ZURN INDUSTRIES LIMITED ♦ 7900 Goreway Drive Unit 10 ♦ Brampton, Ontario L6T5W6 ♦ Phone: 905-405-8272 Fax: 905-405-1292

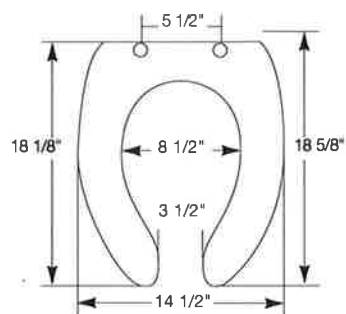




## COMMERCIAL PLASTIC SEATS

### MODEL 255SSC

- ELONGATED SEAT, OPEN FRONT LESS COVER
- SOLID PLASTIC
- CONCEALED 300 SERIES STAINLESS STEEL SELF-SUSTAINING CHECK HINGE

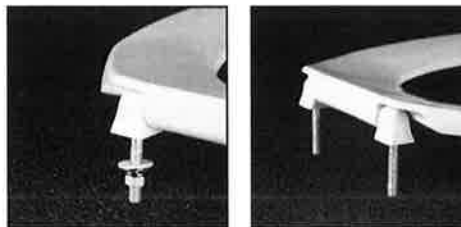
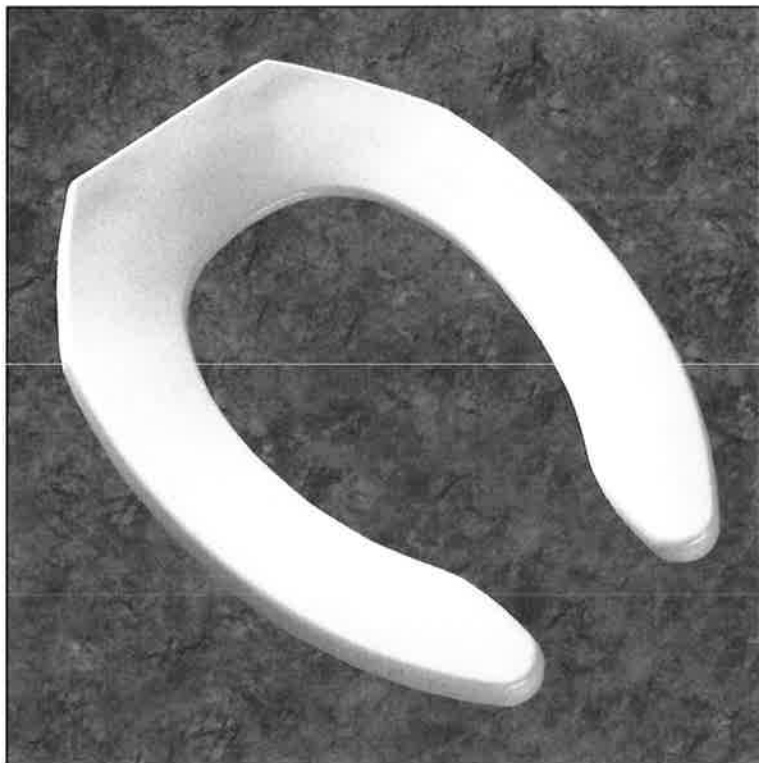


Ring thickness is 13/16"

Ring thickness including the bumper is 1"

Height of the seat with cover is 1-1/2"

Seats shall be No. 255SSC as manufactured by Church Seats. Seats shall be commercial weight and injection molded of solid plastic. Seats shall be open front less cover for elongated bowl and feature large molded-in bumpers. 300 Series stainless steel, self-sustaining concealed check hinge holds seat in any raised position up to 11 degrees beyond vertical. Uses 300 Series stainless steel hardware. Color to be white.



**P-1A**





## Madera™ FloWise® 16-1/2" Height Elongated Flushometer Toilet

VITREOUS CHINA LESS EVERCLEAN®



### Madera™ FloWise® 16-1/2" Height Elongated LESS EverClean®

- Floor mount flushometer valve toilet
- Vitreous china
- High Efficiency, Low Consumption. Operates in the range of 1.1 gpf to 1.6 gpf (4.2 Lpf to 6.0 Lpf)
- Meets definition of HET (High Efficiency Toilet) when used with a high efficiency flush valve (1.1, 1.28 gpf or 1.6 / 1.1 gpf dual flush)
- Fully glazed 2-1/8" trapway
- Elongated bowl
- 10" or 12" roughing-in
- 16-1/2" rim height for accessible application
- Condensation channel
- Powerful direct-fed siphon jet action
- 10" x 12" water surface area
- 1-1/2" inlet spud
- 2 bolt caps included
- Tested to support static weight load of 2,500 lbs. (1,134 kg)

- ☐ **3043.001 Elongated bowl only, top spud**
- ☐ ~~3248.001 Elongated bowl only, top spud with slotted rim for bedpan holding~~
- ☐ **3249.001 Elongated bowl only, back spud**

#### Component Parts:

- ☐ **047007-0070A** Inlet Spud (furnished with bowl)
- ☐ **034783-0200A** Bolt caps with retainers (furnished with bowl)

#### Nominal Dimensions:

718 x 356 x 419mm  
(28-1/4" x 14" x 16-1/2")

Fixture only, less seat and flush valve

#### Compliance Certifications -

##### Meets or Exceeds the Following Specifications:

- ASME A112.19.2 / CSA B45.1 for Vitreous China Fixtures



SEE REVERSE FOR ROUGHING-IN DIMENSIONS

#### System MaP\* Score:

- 1,000 grams of miso @ 1.1 gpf, 1.28 gpf or 1.6 gpf when used with an American Standard flush valve

\* Maximum Performance (MaP) testing performed by IAPMO R&T Lab. MaP Report conducted by Veritec Consulting, Inc. and Koeller and Company.

#### OPERATING PRESSURE:

25 psi (flowing) - 80 psi (static)

#### FLOW REQUIREMENT:

25 gpm (94.6 L/min.)

#### To Be Specified:

- ☐ Color: ☒ **White**
- ☐ Seat:
  - ☐ American Standard #5901.100 Heavy duty open front less cover
  - ☐ American Standard #5901.100SS Extra heavy duty open front less cover with EverClean®
- ☐ Flushometer Valve:



MEETS THE AMERICANS WITH DISABILITIES ACT GUIDELINES AND ANSI A117.1 REQUIREMENTS FOR ACCESSIBLE AND USABLE BUILDING FACILITIES - CHECK LOCAL CODES.



ENVIRONMENTAL  
PRODUCT  
DECLARATION



When used with  
1.1 or 1.28 gpf  
toilet flush valves

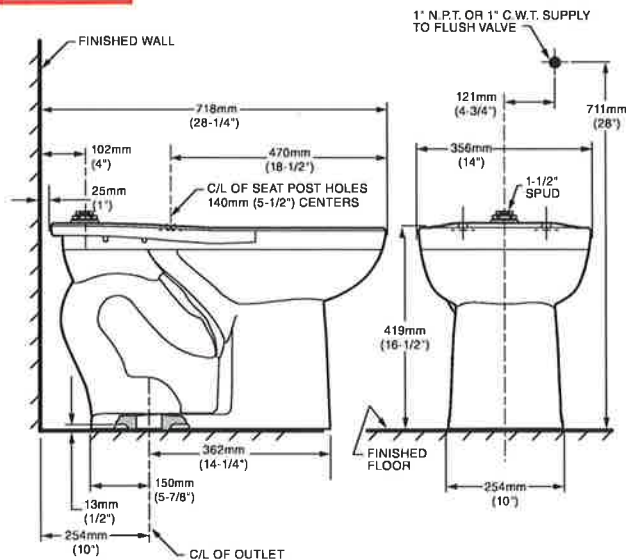


EVERCLEAN

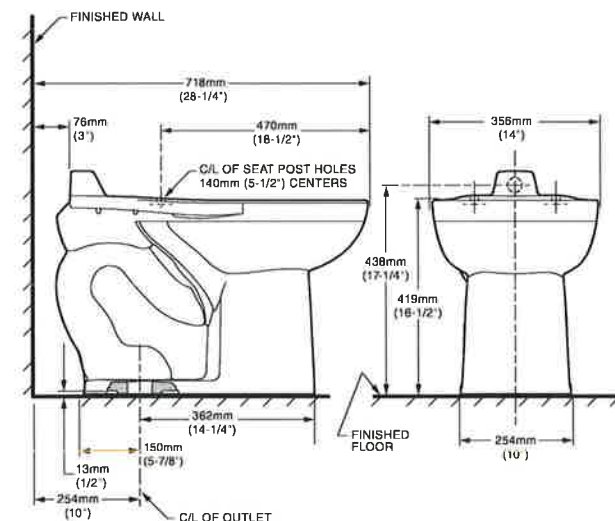


WATER  
EFFICIENT

3043.001/3248.001



3249.001



**NOTES:**  
 PRODUCT 3043 SHOWN, 3248 SAME EXCEPT WITH SLOTTED RIM FOR BED PAN HOLDING.  
 TO COMPLY WITH AREA CODE GOVERNING THE HEIGHT OF VACUUM BREAKER ON THE FLUSHOMETER VALVE, THE PLUMBER MUST VERIFY DIMENSIONS SHOWN FOR SUPPLY ROUGHING.  
 THIS TOILET DESIGNED TO ROUGH-IN AT A MINIMUM DIMENSION OF 254MM (10") AND A MAXIMUM DIMENSION OF 305MM (12") FROM FINISHED WALL TO C/L OF OUTLET.  
 FLUSHOMETER VALVE NOT INCLUDED WITH FIXTURE AND MUST BE ORDERED SEPARATELY. FLUSHOMETER VALVE REQUIREMENTS FOR 12" (305MM) ROUGH-IN: SWEAT EXTENSION NIPPLE IS REQUIRED. REFER TO VALVE MANUFACTURER AND LOCAL CODES.

**IMPORTANT:** Dimensions of fixtures are nominal and may vary within the range of tolerances established by ANSI Standard A112.19.2. These measurements are subject to change or cancellation. No responsibility is assumed for use of superseded or voided pages.



## ZEMS6000AV-IS

Exposed Hardwired Automatic Sensor Flush Valve  
for Water Closets

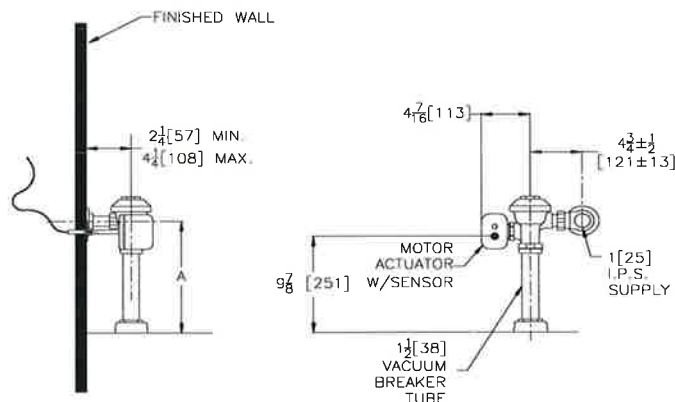
TAG P-1A

### Architectural/Engineering Specification:

Exposed, quiet diaphragm-type, chrome plated flushometer valve with a polished exterior. Complete with Zurn's AquaVantage® TPE, chloramine resistant, dual seal diaphragm with a clog resistant, triple filtered bypass. The valve incorporates a 6 VDC motor actuator, an integral infrared convergence-type proximity sensor and a manual push button override, high impact resistant polycarbonate housing and chrome plated plastic cover with manual override push button and 10 degree angled sensor.

### Product Features:

- Proprietary dezincification resistant low lead brass alloy
- Control stop has internal siphon-guard protection and vandal resistant stop cap, sweat solder kit, wall flange with set screw
- High back pressure vacuum breaker with one piece hex coupling nut
- Chloramine resistant Internal seals
- Adjustable tailpiece
- Spud coupling and flange for top spud connection



Rough-in/Overview dimensions

### Accessories (Order separate as specified)

**P6900-ACA-BA** 7.6VDC Plug-In ACA Power Supply

Powers up to 4 valves

**P6000-HW6**

7.6VDC Hardwired Power Converter

Powers up to 8 valves

**P6000-MJ**

Mini Junction Box

NOTE: Must use either Zurn P6000-HW6 hardware power converter or P6900-ACA-BA regulated plug in to ensure proper operation. Using a power converter other than Zurn may result in operation malfunction or unit failure.

### Compliance and Certification:

- ADA Compliant
- Complies with ASSE 1037/ASME A112.1037/CSA



### Flow Options:

	Flush Volume	WaterSense Compliant
<input type="checkbox"/> -ONE*	1.1 gpf	✓
<input checked="" type="checkbox"/> -HET*	1.28 gpf	✓
<input type="checkbox"/> -WS1	1.6 gpf	
<input type="checkbox"/> -Standard	3.5 gpf	

\*Clog-resistant linear filter

### Suffix Options:

- ☐ -FM12 Floor Mount 12" Rough In
- ☐ -MOB Manual Over-ride Button (Front of Body)
- ☐ -YJ Split Ring Pipe Support
- ☐ -YK Solid Ring Pipe Support
- ☐ -YO Bumper on Angle Stop

### Valve Height Options:

	Product No.	A
<input checked="" type="checkbox"/>	ZEMS6000AV-IS	11 1/2" [292]
<input type="checkbox"/>	ZEMS6000AV-1-IS	16" [406]
<input type="checkbox"/>	ZEMS6000AV-2	24" [610]

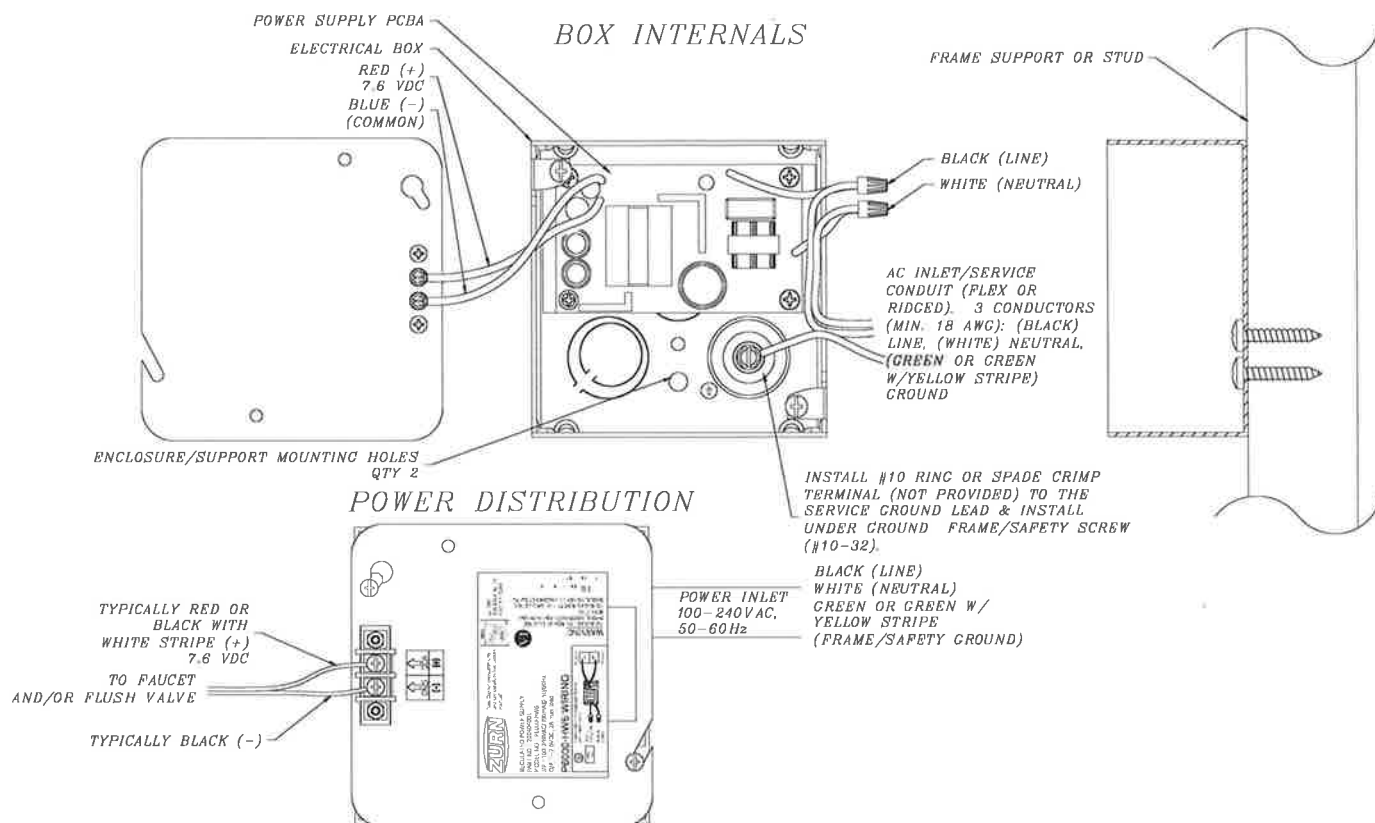
### Architectural/Engineering Approval

The information contained in this document is subject to change without notice.  
Please contact Zurn for most up to date information.

This product should be used with a WaterSense labeled counterpart with a compatible flow volume to ensure that the entire system meets the requirements for water efficiency and performance.

## P6000-HW6

### 7.6 VDC Hardwired Power Converter for Flush Valves and Faucets



**ENGINEERING SPECIFICATION: ZURN P6000-HW6 Power Converter** - The Hardwired Power Converter is a 7.6 VDC regulated, 2.0A power supply that will operate up to: (8) ZEMS or ZEMS-IS Sensors/Actuators, (8) ZESS Sensors/Solenoids, (8) sensor faucets, or (8) Pint Urinal valves. The unit shown above is integrated into a 4"L x 4"W x 2-1/8"D electrical box. The AC input connections are terminated within the electrical box. The 7.6 VDC output terminals are externally mounted to the cover plate.

**Notes:**

1. Mounting hardware (AC inlet conduit/cable clamp and enclosure-frame mounting screws) are NOT provided.

**Typical Rough-In:** The 3 input conductors (line, neutral and frame ground) are routed within conduit to the P6000-HW6 and the AC inlet and the frame/safety ground leads are terminated within the assembly. The low voltage, 7.6 DC, output connections are terminated externally and depending upon the installation area, appropriate cable/conductor insulation must be selected to meet local codes (conduit not required for the low voltage output conductor paths).

**Architectural/Engineering Approval**

The information contained in this document is subject to change without notice.  
Please contact Zurn for most up to date information.

ZURN INDUSTRIES, LLC. ♦ COMMERCIAL BRASS OPERATION ♦ 5900 ELWIN BUCHANAN DRIVE ♦ SANFORD NC 27330

Phone: 1-800-997-3876 ♦ Fax: 919-775-3541 ♦ World Wide Web: [www.zurn.com](http://www.zurn.com)

In Canada: ZURN INDUSTRIES LIMITED ♦ 7900 Goreway Drive Unit 10 ♦ Brampton, Ontario L6T5W6 ♦ Phone: 905-405-8272 Fax: 905-405-1292

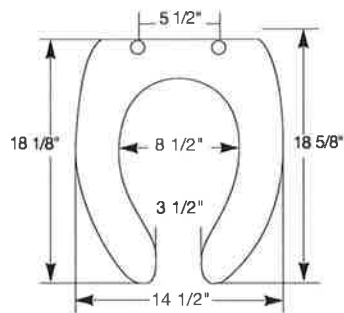




## COMMERCIAL PLASTIC SEATS

### MODEL 255SSC

- ELONGATED SEAT, OPEN FRONT LESS COVER
- SOLID PLASTIC
- CONCEALED 300 SERIES STAINLESS STEEL SELF-SUSTAINING CHECK HINGE

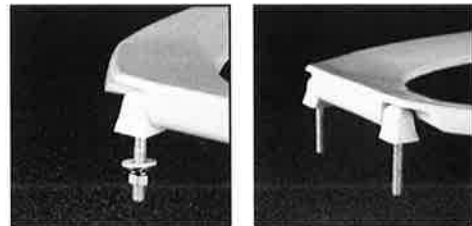
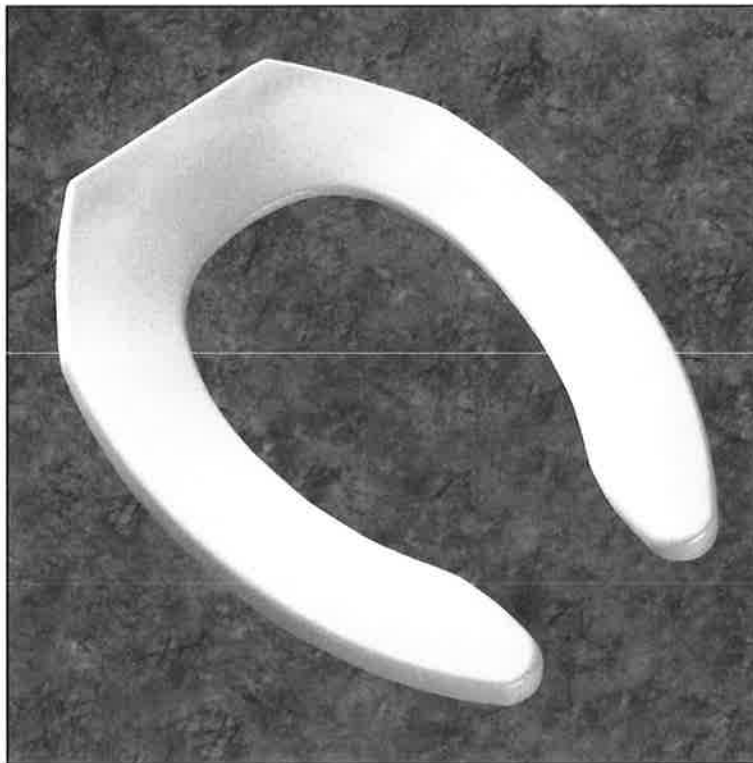


Ring thickness is 13/16"

Ring thickness including the bumper is 1"

Height of the seat with cover is 1-1/2"

Seats shall be No. 255SSC as manufactured by Church Seats. Seats shall be commercial weight and injection molded of solid plastic. Seats shall be open front less cover for elongated bowl and feature large molded-in bumpers. 300 Series stainless steel, self-sustaining concealed check hinge holds seat in any raised position up to 11 degrees beyond vertical. Uses 300 Series stainless steel hardware. Color to be white.



**P-2**

## OVALYN UNIVERSAL ACCESS™ SINK

- Made from vitreous china
- Unglazed rim for under counter mount
- Rear overflow
- Supplied with mounting kit (047194-0070A) and template



**Nominal Dimensions:**

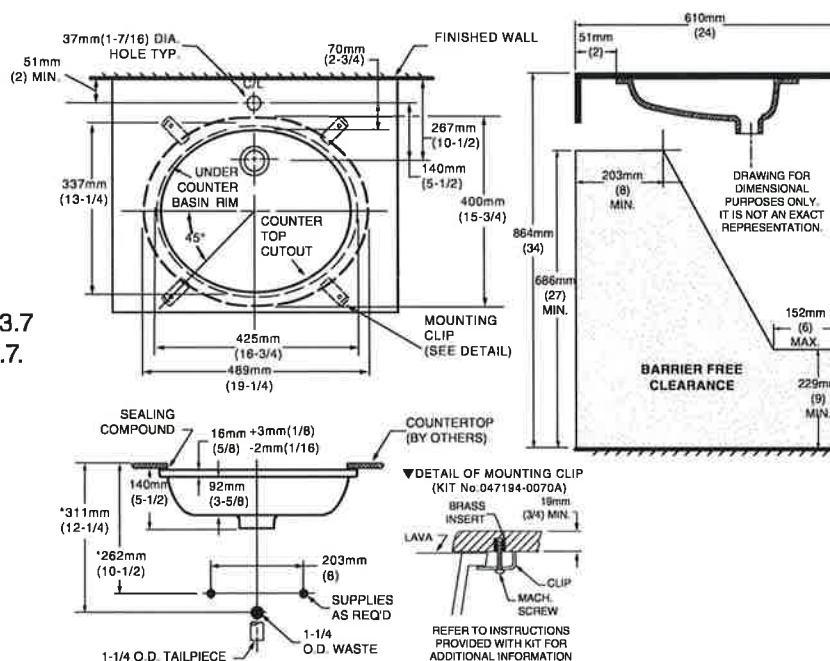
489 x 400mm  
(19-1/4" x 15-3/4")

**Bowl sizes:**

425mm (16-3/4") wide  
337mm (13-1/4") front to back  
140mm (5-1/2") deep  
102mm (4") bowl depth

**Compliance Certifications -  
Meets or Exceeds the  
Following Specifications:**

- ASME A112.19.2M for Vitreous China Fixtures
- CAN/CSA B45 series
- 1995 National Building Code, section 3.7 and CAN/CSA-B651-M90 and OBC 3.7.



**To Be Specified:**

- ☐ Color: ☒ White ☐ Bone
  - ☐ Linen ☐ Silver
  - ☐ Fawn Beige ☐ Black
- ☐ Faucet\*:
- ☐ Faucet Finish:
- ☐ Supplies:
- ☐ 1-1/4" Trap:

\* See faucet section for additional models available

For Universal Design Options, top of counter may be mounted at 813mm (32") minimum from finished floor to meet ADA and ANSI A117.1 requirements. A 838mm (33") minimum mounting height is required for Ontario. Check local codes for heights and faucet handles requirements.



**MEETS THE AMERICANS WITH DISABILITIES ACT  
GUIDELINES AND ANSI A117.1 ACCESSIBLE AND  
USABLE BUILDINGS AND FACILITIES -  
CHECK LOCAL CODES.**

Countertop 864mm (34") from finished floor. Lavatory installed 51mm (2") MIN. from front edge of countertop. Countertop thickness to be 25mm (1") maximum.

**OVALYN UNIVERSAL ACCESS™**  
**UNDERCOUNTER SINK**  
VITREOUS CHINA

**NOTES:**

\* DIMENSIONS SHOWN FOR LOCATION OF SUPPLIED AND "P" TRAP ARE SUGGESTED.

▼ UNDERCOUNTER MOUNTING KIT SUPPLIED WITH BASIN.  
FITTINGS NOT INCLUDED WITH FIXTURE AND MUST BE ORDERED  
SEPARATELY.  
USE ENCLOSED TEMPLATE FOR COUNTERTOP CUTOUT  
SEALING COMPOUND SUPPLIED BY OTHERS.

**IMPORTANT:** Dimensions of fixtures are nominal and may vary within the range of tolerances established by ANSI Standard A112.19.2. These measurements are subject to change or cancellation. No responsibility is assumed for use of superseded or voided pages.





## CONTRASTA™ SERIES - PROXIMITY® FAUCET

COMMERCIAL

### SPECIFICATION: (Example - 820DPA20-SS)

- **Proximity® Sensing Technology**
- Adjustable sensing range and timeout
- **Surface Mount Control Box** – supplied as complete product
- **Hardwire Operated** (24 VAC) deckmount handwash system
  - Requires separate order of **AC filter** and transformer to have complete product
- Metal hold-down package
- Serviceable filter screen upstream of the valve
- Maximum flow rate - 1.0 gpm (3.8 L/min)
- Supplied with 3 outlet options (Laminar, Aerated and Spray)
- Mixing valve required (order separately)
- Stainless Steel Finish



### AVAILABLE CONFIGURATIONS:

- **Power Option**
  - Battery Operated (4 'C' cell) (Surface Mount Box only)
  - Hardwire Operated (24 VAC)
- **Surface Mount Control Box** – supplied as complete
- **Recessed Control Box Trim** – supplied as trim parts only
  - Includes – 12 x 12" (305 x 305 mm) stainless steel cover plate, driver board, solenoid
  - Requires separate order of **ELAVT0001ARI** or **ELAVT0008ARI** rough-in
- **Flow rates**
  - 1.0 gpm (3.8 L/min)
  - 0.5 gpm (1.9 L/min)
  - 0.35 gpm (1.3 L/min)
- **Finish** (Chrome, Stainless Steel, Matte Black and Champagne Bronze®)

### COMPLIES WITH

- ASME A112.18.1/CSA B125.1
- Indicates compliance to ICC / ANSI A117.1
- EPA WaterSense® listed - Outlet Option 2
- Verified compliant with 0.25% weighted average Pb content Regulations

(Contact Delta Representative for State and/or Local Approvals.)

Engineer/Architect Approval	
Model Specified: 820DPA50-SS	
Approval:	Date:

### MODEL NUMBER EXAMPLE:

Configurations vary, see below for availability.

820DPA20-▲

#### POWER OPTION

- 0 = Hardwire operated  
1 = Battery operated  
(Surface Mount Box Only)

#### FLOW RATE

- 2 = 1.0 gpm (3.8 L/min)  
5 = 0.5 gpm (1.9 L/min)  
9 = 0.35 gpm (1.3 L/min)

#### CONTROL BOX OPTION

- 0 = Surface mount box  
8TR = Trim **ONLY** for Recessed Box

#### FINISH

- Default = Chrome  
SS = Stainless Steel  
DL = Matte Black  
CZ = Champagne Bronze®

Available Models		Power Option/Control Box Option		
		Power - 0 /Control Box - 0	Power - 0 /Control Box - 8TR	Power - 1 /Control Box - 0
		0 = Hardwire Operated 0 = Surface Mount Box	0 = Hardwire Operated 8TR = Trim <b>ONLY</b> for Recessed Box	1 = Battery Operated 0 = Surface Mount Box
Flow Rates	2	 1.0 gpm (3.8 L/min) Laminar, Aerated and Spray	 820DPA20-▲	 820DPA28TR-▲
	5	 0.5 gpm (1.9 L/min) Laminar, Aerated and Spray	 820DPA50-▲	 820DPA58TR-▲
	9	 0.35 gpm (1.3 L/min) Laminar, Aerated and Spray	 820DPA90-▲	 820DPA98TR-▲

▲ - Designate Proper Finish Suffix

WaterSense® is a registered trademark of the U.S. Environmental Protection Agency

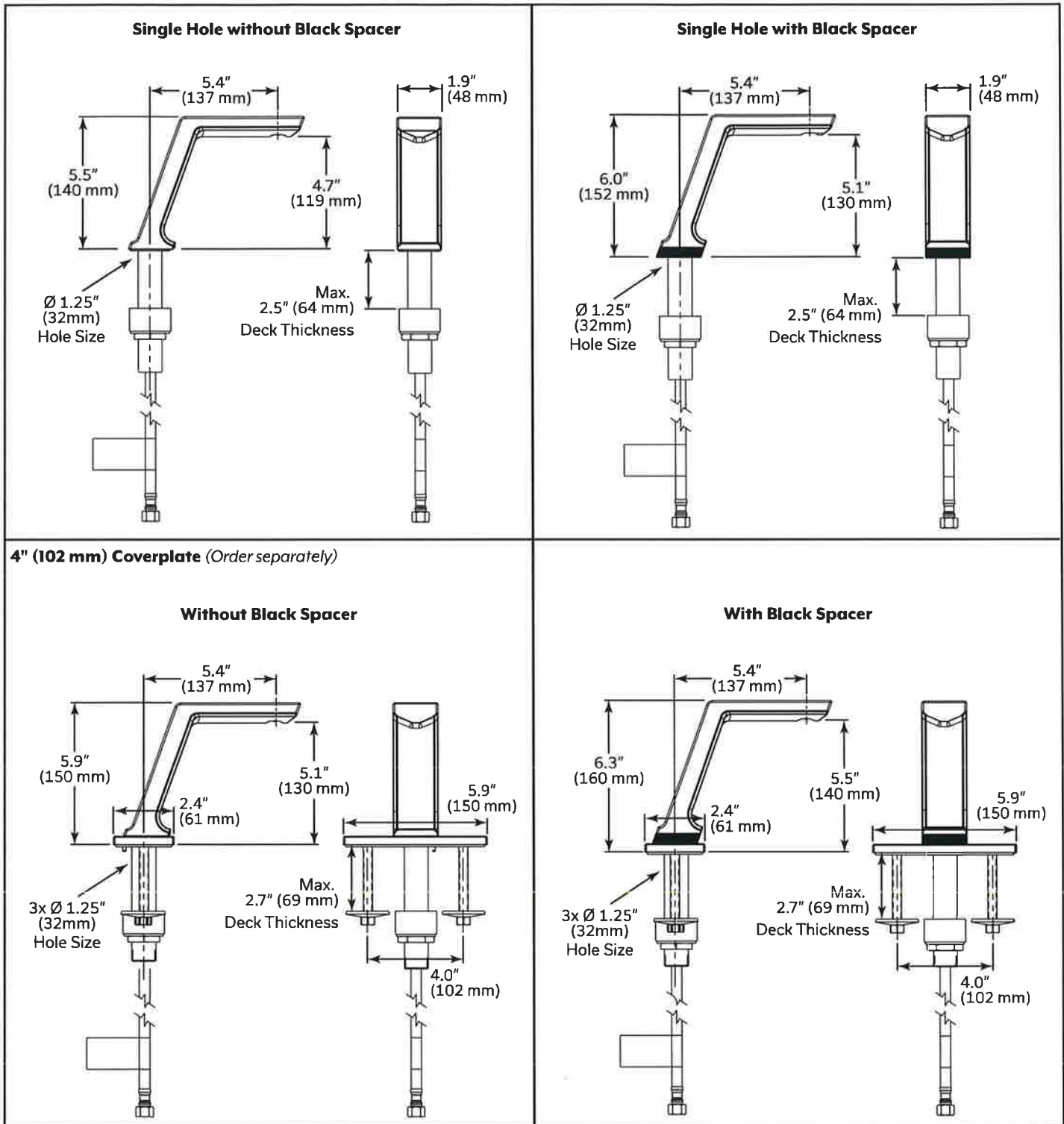
Delta Faucet reserves the right (1) to make changes in specifications and materials, and (2) to change or discontinue models, both without notice or obligation. Dimensions are for reference only. See current full-line price book for finish options and product availability.

Flush volumes are at 60 psi (414 kPa).  
**NOTICE** Use all pages as product submittal sheets.

**DSP-820DPA, Rev. C**

**CONTRASTA™ SERIES - PROXIMITY® FAUCET**

**COMMERCIAL**



**NOTICE** Measurements may vary  $\pm 0.25"$  (6mm)

WaterSense® is a registered trademark of the U.S. Environmental Protection Agency

Delta Faucet reserves the right (1) to make changes in specifications and materials, and (2) to change or discontinue models, both without notice or obligation. Dimensions are for reference only. See current full-line price book for finish options and product availability.

Flush volumes are at 60 psi (414 kPa).

**NOTICE** Use all pages as product submittal sheets.

**DSP-820DPA, Rev. C**

# CONTRASTA™ SERIES - PROXIMITY® FAUCET

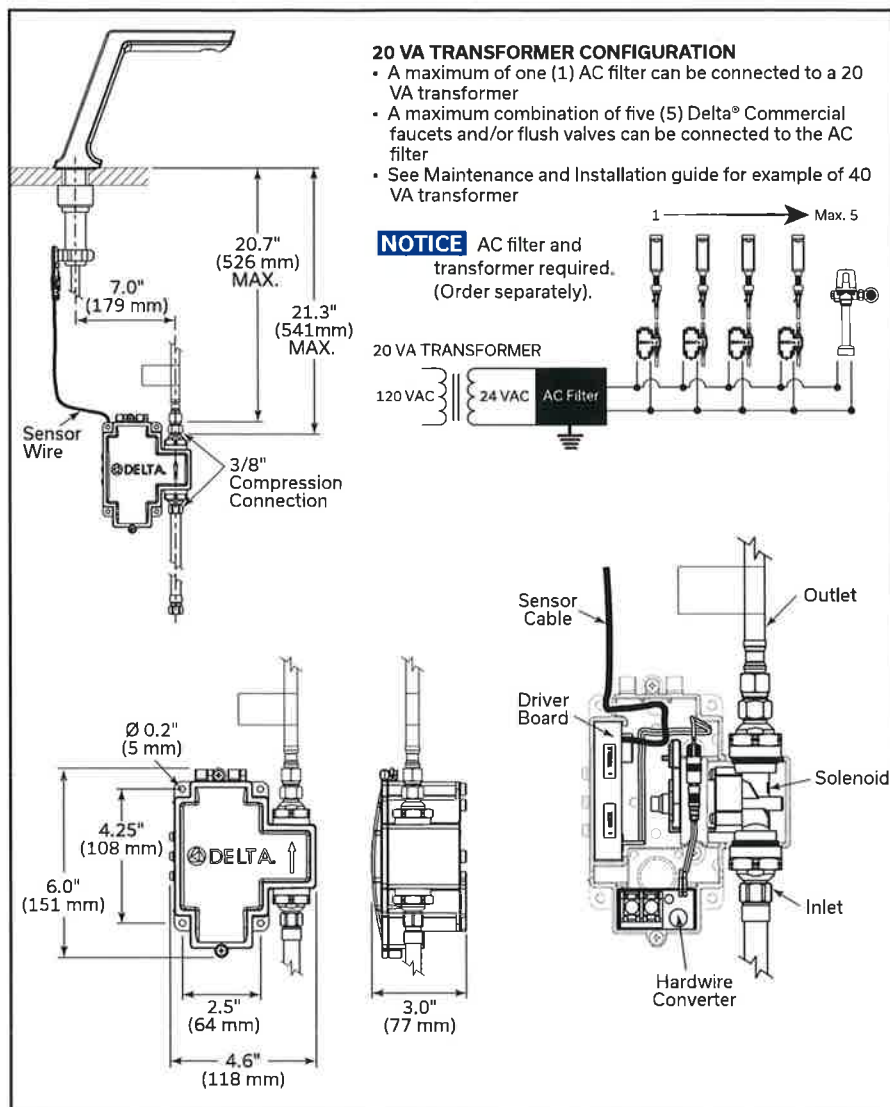
## Hardwire Operated Surface Mount Box

### OPERATION

- Hands free (touchless) operation.
- No visible sensor, the spout is the sensor.
- Adjustable sensing distance, factory set to approximately 3" (76 mm).
- Adjustable auto shut off feature, factory set to 45 seconds.
- Metering mode with selectable flow times of 7 seconds to 4 minutes, factory set to off.
- Periodic Rinse feature, time adjustable in 6 hour increments up to 2 days. Selectable rinsing time from 10 to 180 seconds. Factory set to off.

### NOTICE

- Designed for routine 180°F (82°C) disinfection cycles up to 30 minutes.
- Use only Delta® supplied cable sets. Using non-Delta® cables, cutting or splitting any components will void the warranty.
- Proximity® models not for use on enamel covered metal sinks or metal counter tops.
- Use 2-conductor 18 AWG wire for all electrical connections.
- Use Delta® Commercial approved AC filters and transformers



# CONTRASTA™ SERIES - PROXIMITY® FAUCET

COMMERCIAL

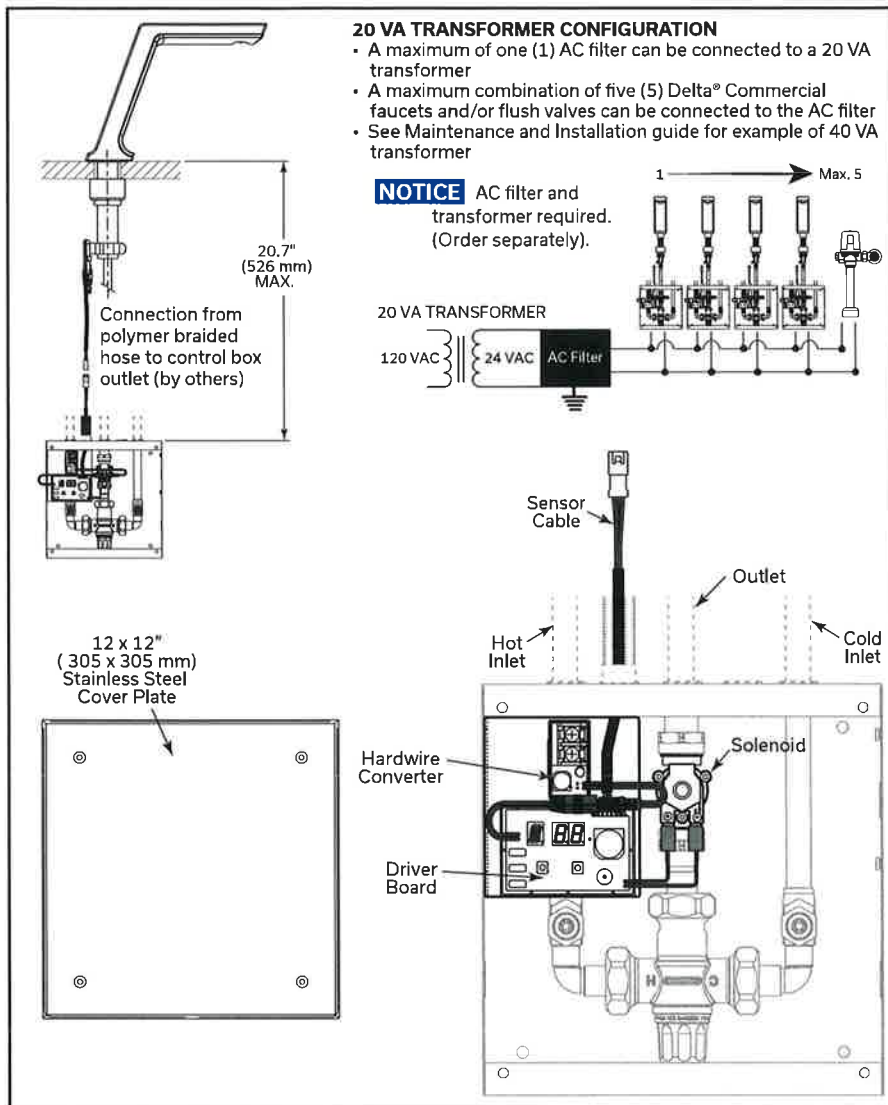
## Hardwire Operated Trim ONLY - Recessed Box

### OPERATION

- Hands free (touchless) operation.
- No visible sensor, the spout is the sensor.
- Adjustable sensing distance, factory set to approximately 3" (76 mm).
- Adjustable auto shut off feature, factory set to 45 seconds.
- Metering mode with selectable flow times of 7 seconds to 4 minutes, factory set to off.
- Periodic Rinse feature, time adjustable in 6 hour increments up to 2 days. Selectable rinsing time from 10 to 180 seconds. Factory set to off.

### NOTICE

- Designed for routine 180°F (82°C) disinfection cycles up to 30 minutes.
- Use only Delta® supplied cable sets. Using non-Delta® cables, cutting or splitting any components will void the warranty.
- Proximity® models not for use on enamel covered metal sinks or metal counter tops.
- Use 2-conductor 18 AWG wire for all electrical connections.
- Use Delta® Commercial approved AC filters and transformers.



Accessories (Ordered Separately)	
061305▲	Square 4" (102 mm) Coverplate
061256A	36" (91.4 cm) Sensor Cable Extension
063268A	Hardwire with Battery Backup See DSP-BBBox for detailed specification
060704A	120 to 24 VAC Class 2 20 VA (Up to 5 Electronic Valves)
060771A	120 to 24 VAC Class 2 40 VA (Up to 10 Electronic Valves)
063271A*	AC Filter 24 VAC to 18 VDC (Up to 5 Electronic Valves)
063267A*	AC Filter 24 VAC to 18 VDC plus 120 to 24 VAC Class 2 20 VA (Up to 5 Electronic Valves)
<b>NOTICE</b> ▲ - Designate Proper Finish Suffix * - AC Filter required for hardwire Proximity® models. One (1) AC filter for up to 5 valves.	

**NOTICE** Measurements may vary ± 0.25" (6mm)

WaterSense® is a registered trademark of the U.S. Environmental Protection Agency

Delta Faucet reserves the right (1) to make changes in specifications and materials, and (2) to change or discontinue models, both without notice or obligation. Dimensions are for reference only. See current full-line price book for finish options and product availability.

**NOTICE** Flush volumes are at 60 psi (414 kPa). Use all pages as product submittal sheets.

DSP-820DPA, Rev. C



# CONTRASTA™ SERIES - PROXIMITY® FAUCET

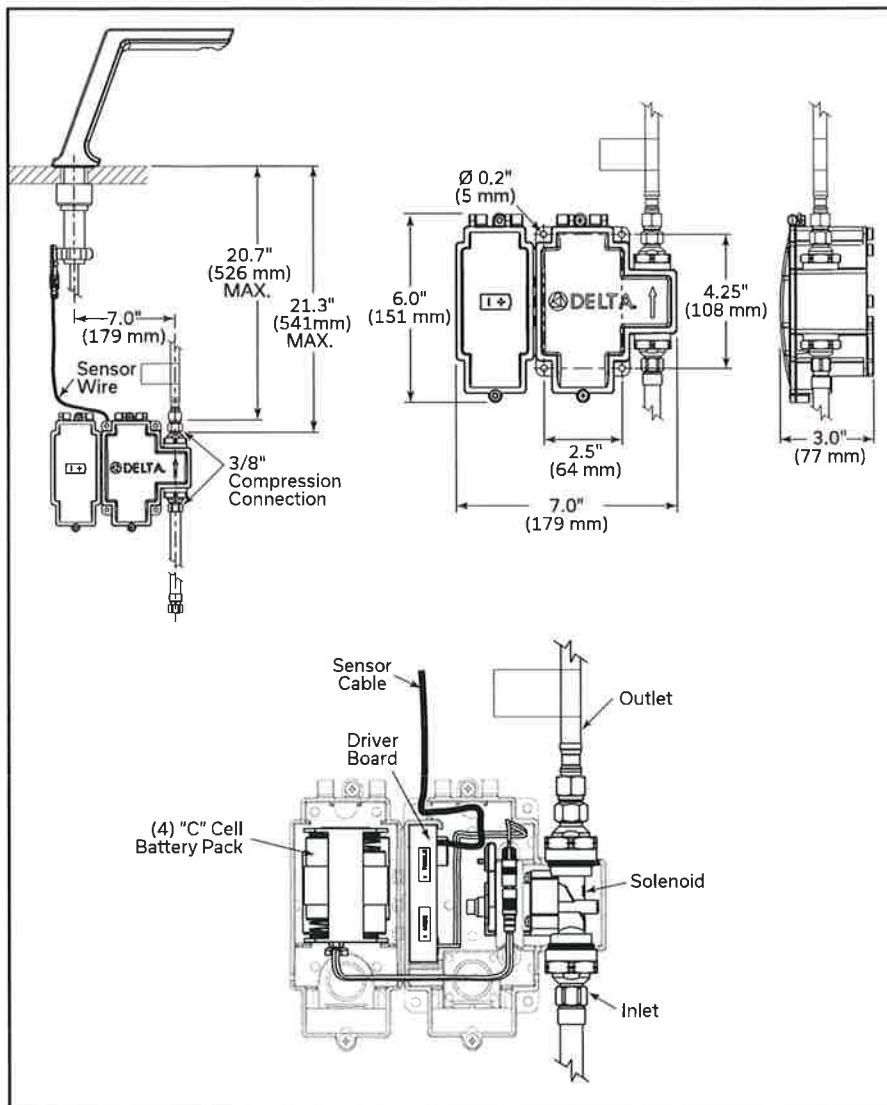
## Battery Operated Surface Mount Box

### OPERATION

- Hands free (touchless) operation.
- No visible sensor, the spout is the sensor.
- Adjustable sensing distance, factory set to approximately 3" (76 mm).
- Low battery audible beep (for battery models only) will activate after faucet shuts off when low battery condition exists.
- Adjustable auto shut off feature, factory set to 45 seconds.
- Metering mode with selectable flow times of 7 seconds to 4 minutes, factory set to off.
- Periodic Rinse feature, time adjustable in 6 hour increments up to 2 days. Selectable rinsing time from 10 to 180 seconds. Factory set to off.

### NOTICE

- Designed for routine 180°F (82°C) disinfection cycles up to 30 minutes.
- Use only Delta® supplied cable sets. Using non-Delta® cables, cutting or splitting any components will void the warranty.
- Proximity® models not for use on enamel covered metal sinks or metal counter tops.



Accessories (Ordered Separately)	
<b>061305▲</b>	Square 4" (102 mm) Coverplate
<b>061256A</b>	36" (91.4 cm) Sensor Cable Extension
<b>063272A</b>	60" (152.4 cm) Ganging/Splitter Cable
<b>063266A</b>	60" (152.4 cm) Plug-in Power Supply 6 VDC
<b>NOTICE</b>	
▲ - Designate Proper Finish Suffix	

**NOTICE** Measurements may vary ± 0.25" (6mm)

WaterSense® is a registered trademark of the U.S. Environmental Protection Agency

Delta Faucet reserves the right (1) to make changes in specifications and materials, and (2) to change or discontinue models, both without notice or obligation. Dimensions are for reference only. See current full-line price book for finish options and product availability.

Flush volumes are at 60 psi (414 kPa).

**NOTICE** Use all pages as product submittal sheets.

**DSP-820DPA, Rev. C**

**063267A – AC Filter with Transformer**  
**(063271A and 060704A)**



063267A

**060704A – Hardwire Transformer**

**RP32508 – Hardwire Transformer**

**SPECIFICATIONS**

**General:** Supplies power for up to five Delta Commercial 590-PAHDF, 590TPA, 591TPA, 620TPA or 630TPA Series electronic hardwire units.

**Input Voltage:** 120 VAC @ 60 Hz

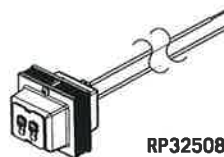
**Output Voltage (unloaded):** 24 VAC  $\pm$  3% @ 20 VA

**Maximum Output Current:** 800 mA

**Physical Connections:** Universal Mounting Clip

**Terminals:** Screw Type

**Safety Approval:** UL Listed Class 2  
CSA Certified



RP32508

**060771A – Hardwire Transformer**

**SPECIFICATIONS**

**General:** Supplies power for up to ten 590-PAHDF, 590TPA, 591TPA, 620TPA, 630TPA Series electronic hardwire units.

**Input Voltage:** 120 V

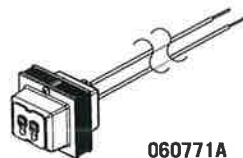
**Output Voltage (unloaded):** 24 VAC @ 40 VA

**Maximum Output Current:** 1.67 A

**Physical Connections:** Universal Mounting Clip

**Terminals:** Screw Type

**Safety Approval:** UL Listed Class 2  
CSA Certified



060771A

**063270A – Hardwire Converter**

**SPECIFICATIONS**

**General:** Converts Delta Commercial 590-PAHDF, 590TPA, 591TPA, 620TPA, 630TPA Series. 24 VAC to 6.4 VDC. Supplied with hardwire models.

**Input Voltage:** 12 - 24 V (AC or DC)

**Output Voltage:** 6.4 VDC  $\pm$  5%

**Operating Temperature Range:** -55°C to 85°C

**Terminals:** Screw Type

**Wire Size:** #22 AWG Minimum



063270A

**063271A – AC Filter**

**SPECIFICATIONS**

**General:** Required for hardwire models – up to five 590TPA, 591TPA, 620TPA, 630TPA, 590/591/592-PAHDF Series.

**Input Voltage:** 24 VAC

**Output Voltage:** 18 VDC



063271A

**063266A – Plug-In Power Supply**

**SPECIFICATIONS**

**General:** Supplies power for up to five Delta Commercial 590-PAHDF, 590TPA, 591TPA, 620TPA or 630TPA electronic units. Supplied with plug-in models

**Input Voltage:** 100-240 V @ 50-60 Hz

**Output Voltage (unloaded):** 6.3 VDC  $\pm$  5%

**Maximum Output Current:** 2 A

**Operating Temperature Range:** 0°C to 40°C

**Physical Connections:** Plug-In Connection

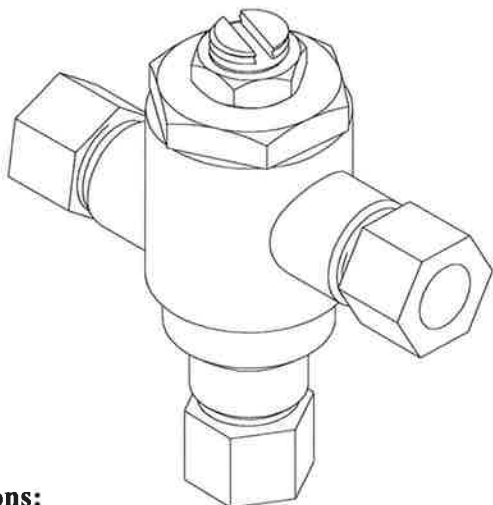
**Wire Length:** 59"

**Safety Approval:** UL Listed Class 2  
Efficiency Level VI  
FCC



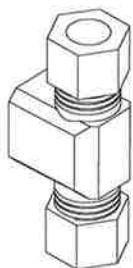
063266A

# 170A-LF

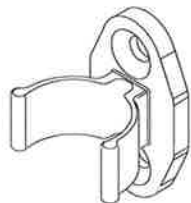


## Options:

- ☐ STSTL REC- Stainless steel cabinet, #4 finish, recessed
- ☐ STSTL EXP- Stainless steel cabinet, #4 finish, exposed
- ☐ BWE REC- Steel cabinet, baked white, recessed
- ☐ BWE EXP- Steel cabinet, baked white, exposed
- ☐ BP- Cold water By-Pass (shipped loose)
- ☐ BRKT- mounting bracket (shipped loose)
- ☐ CP- Chrome plated finish



BP option



BRKT option



**WARNING:** This product can expose you to chemicals including lead, which is known to the State of California to cause cancer. For more information, go to [www.P66Warnings.ca.gov](http://www.P66Warnings.ca.gov)

\* This product is certified to meet Low Lead requirements of wetted surface area containing less than 0.25% lead by weight

## Engineer's Approval

Job # \_\_\_\_\_

Arch/Eng. \_\_\_\_\_

Contractor \_\_\_\_\_

## Application:

Submittal Data Sheet S-170A-LF

April, 2020

The Model 170A-LF is a high performance thermostatic temperature limiting device used to supply single outlets. Can be used to supply one sensor faucet or one two handle manual faucet.

## Features:

- Certified to ASSE 1070 to control down to 0.25 GPM
- Eco-Mix Certified Lead-Free\* construction
- Integral inlet checks and stainless steel screens
- Vandal resistant locknut to prevent accidental adjustment
- Easy 3/8" tubing or flex hose installation

## Specifications:

- Minimum flow: 0.25 GPM (0.95 l/Min) Certified to ASSE
- Maximum flow: 4 GPM
- Maximum pressure: 125 PSI (8.6 BAR)
- Maximum hot water temperature: 180°F (82°C)
- Hot water inlet temperature range: 120-180°F (49-82°C)
- Cold water inlet temperature range: 33-80°F (1-27°C)
- Temperature adjustment range: 95-120°F (35-49°C)

## Certifications:

ASSE 1070-2015

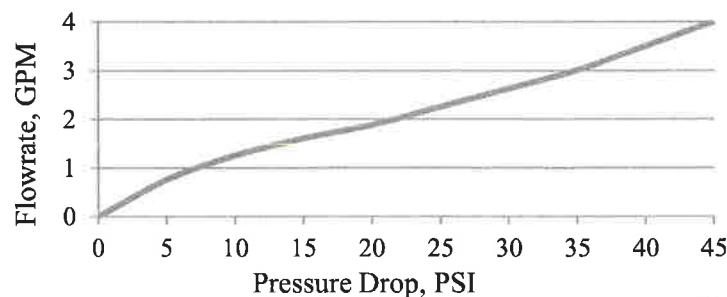


CSA B125.70-15



Certified to NSF61 thru the ASSE 1070 testing process

PRESSURE DROP						
5	10	15	20	30	45	PSI
.35	.70	1.05	1.4	2.1	3.1	BAR
0.75	1.25	1.6	1.88	2.63	4	GPM
2.84	4.73	6.06	7.1	10	15	L/MIN



1360 Elmwood Avenue, Cranston, RI 02910 USA

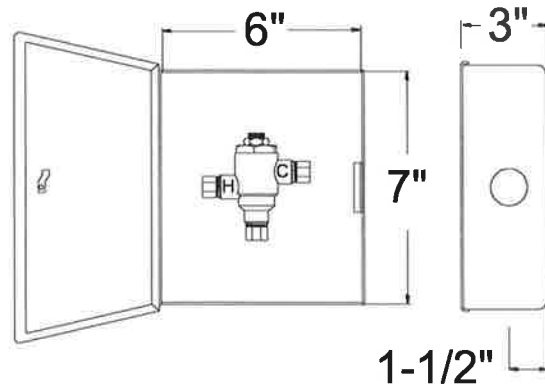
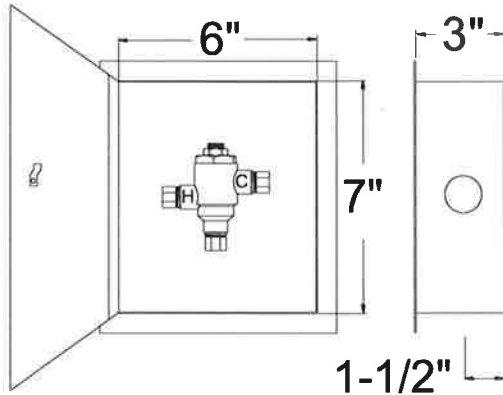
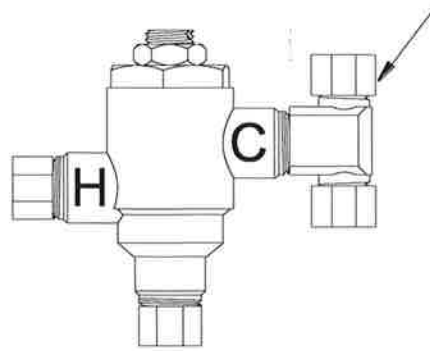
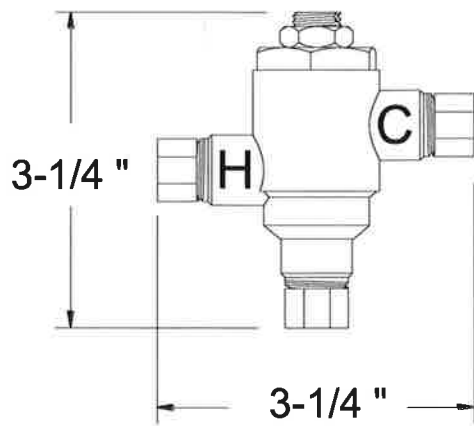
Phone: 401.461.1200 Fax: 401.941.5310

Email: [info@leonardvalve.com](mailto:info@leonardvalve.com)

Web Site: <http://www.leonardvalve.com>

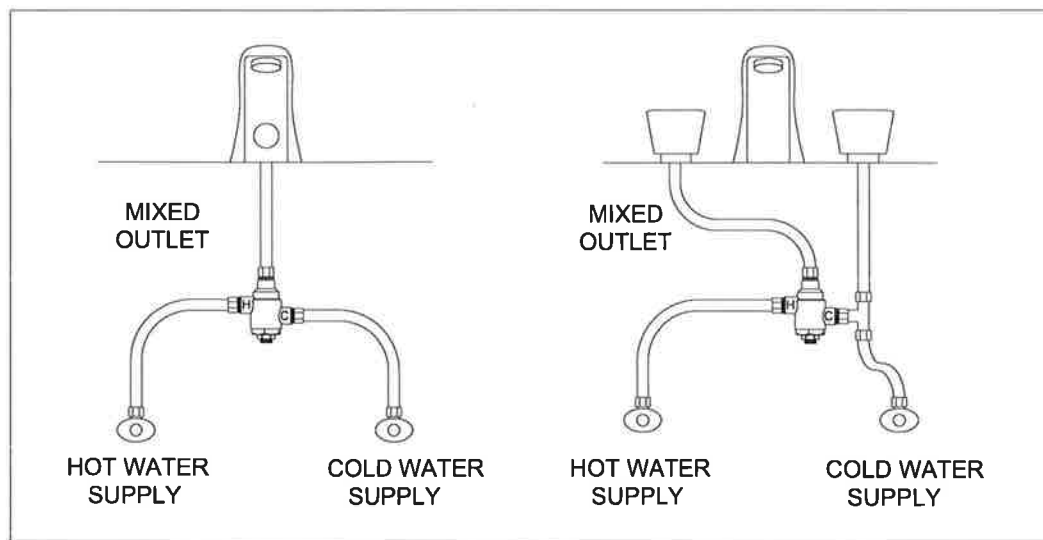


BP-OPTION



**170A-LF-REC**

**170A-LF-EXP**



**170A-LF**

**170A-LF-BP**



Note: Leonard Valve Company reserves the right of product, or design modifications without notice or obligation.

© 2020 Leonard Valve Company  
Printed in USA

1360 Elmwood Avenue, Cranston, RI 02910 USA

Phone: 401.461.1200 Fax: 401.941.5310

Email: [info@leonardvalve.com](mailto:info@leonardvalve.com)

Web Site: <http://www.leonardvalve.com>



## McGuire Manufacturing Co., Inc.

60 Grandview Court  
P.O. Box 746 ♣ Cheshire, CT 06410  
203-699-1801 ♣ Fax: 203-699-1813  
www.mcguiremfg.com

### PRODUCT SPECIFICATION

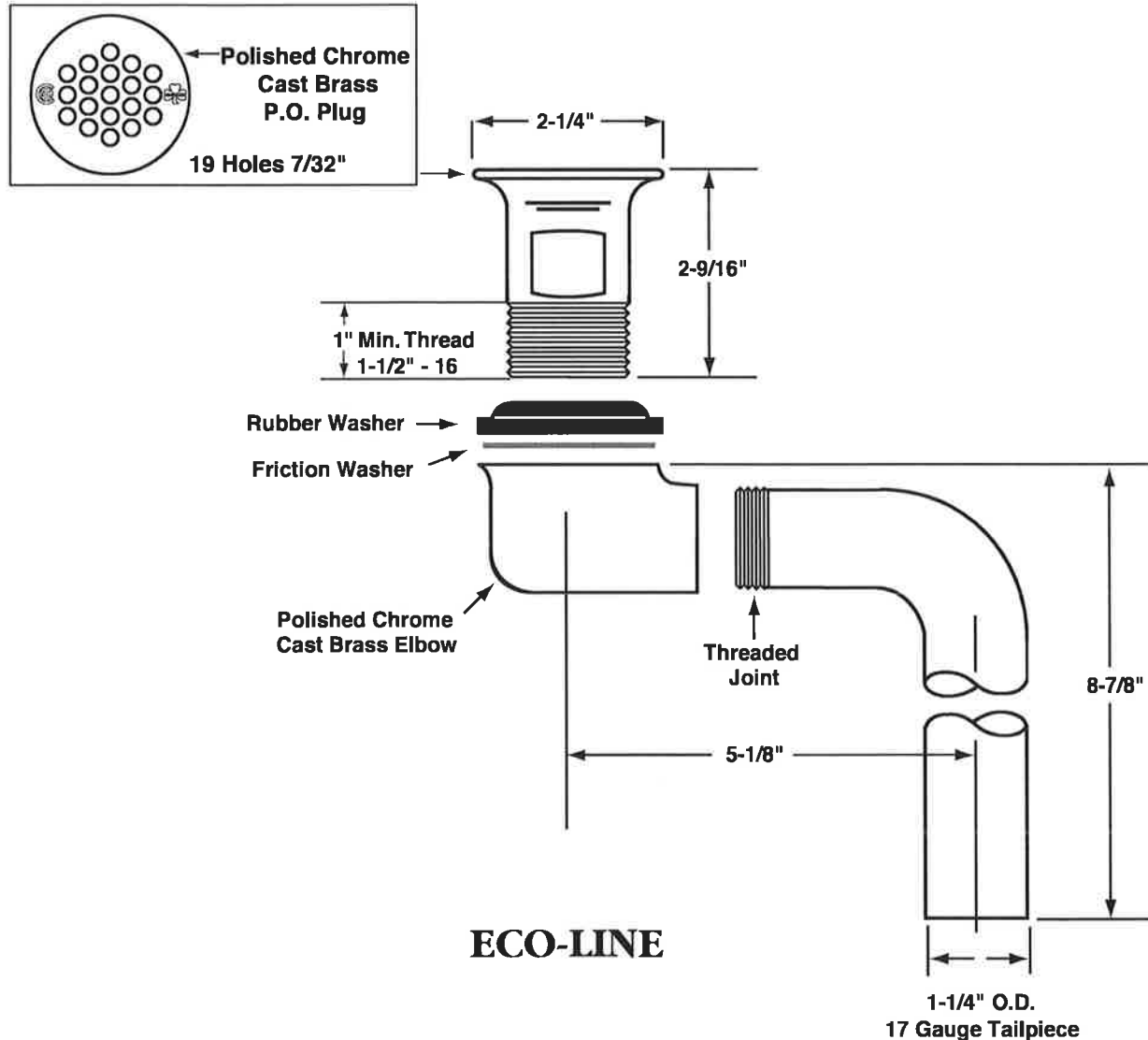
Part No.

**155WCECO**

**Offset Lavatory  
Grid Strainer**

Job Name:

Submittal Number:



A.D.A.



SP® Certified

### Specifications:

Cast Brass Chrome Plated Offset Wheelchair Strainer with polished chrome cast brass elbow, 17 gauge 1-1/4 inch seamless brass offset tailpiece, heavy rubber basin washer and fiber friction washer. Offset lavatory strainer shall be in compliance with CSA or other recognized testing authority and bear both manufacturer and testing mark.



# McGuire Manufacturing Co., Inc.

60 Grandview Court  
Cheshire, Connecticut 06410  
(203) 699-1801 Fax (203) 699-1813  
customerservice@mcguiremfg.com mcguiremfg.com

## PRODUCT SPECIFICATION

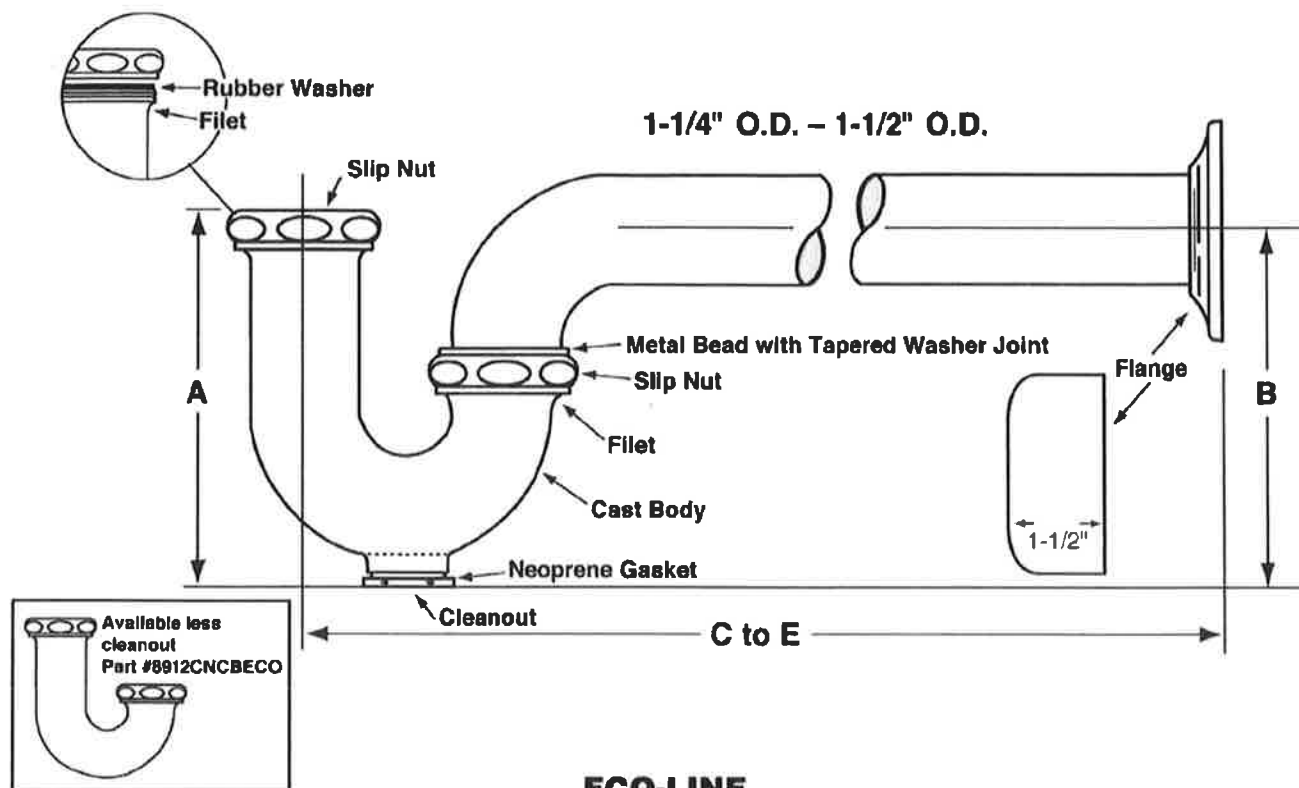
Part No.

**C8872CECO**

**Cast Body P-Trap With  
or Without Cleanout**

Job Name:

Submittal Number:



### ECO-LINE

#### ROUGHING MEASUREMENTS

MODEL NO.	TRAP DIMENSIONS		A	B	C to E	FLANGE	SLIP NUT
	INLET	OUTLET					
<b>C8872CECO</b>	1-1/4"	1-1/4"	4-1/2"	4-1/2"	10"	Shallow	Zinc

**FED SPEC W.W.P. 541  
CAST BRASS P-TRAP  
MINIMUM SEAL 2"**



ASME A112.18.2/CSA B125.2

### Specifications:

Chrome plated P-Trap shall be cast brass body, with or without cleanout, with 17 gauge seamless tubular wall bend and flange.



#### WARNING:

This product can expose you to chemicals including lead, which is known to the State of California to cause cancer, and birth defects or other reproductive harm. For more information go to [www.P65Warnings.ca.gov](http://www.P65Warnings.ca.gov).

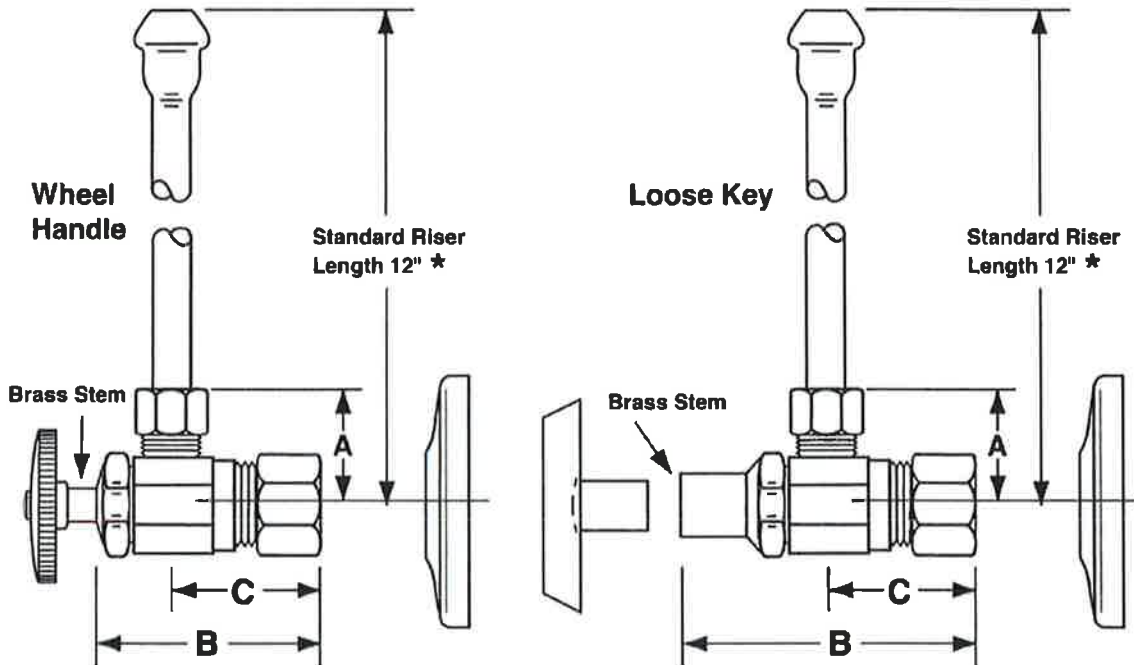
**McGuire Manufacturing Co., Inc.**

60 Grandview Court  
P.O. Box 746 • Cheshire, CT 06410  
203-699-1801 • Fax: 203-699-1813  
www.mcguiremfg.com

**PRODUCT SPECIFICATION****Part No.**

LF2165CC, **LF2165CCLK**,  
LF2167CC, LF2167CCLK

**Compression x Compression  
Lavatory Supply**

**Job Name:** \_\_\_\_\_**Submittal Number:** \_\_\_\_\_

NO.	DESCRIPTION	ROUGHING MEASUREMENTS		
		A	B	C
LF2165CC	1/2" Nominal x 3/8" O.D.	1"	1-3/4"	1"
<b>LF2165CCLK</b>	1/2" Nominal x 3/8" O.D.	1"	2-3/8"	1"
LF2167CC	1/2" Nominal x 1/2" O.D.	1"	1-3/4"	1-1/4"
LF2167CCLK	1/2" Nominal x 1/2" O.D.	1"	2-3/8"	1-1/4"

**LK** designates Loose Key

\* See options and accessories section for details on product variations.

**Specifications:**

Supply kit shall include low lead chrome plated supply brass stop valves with full turn brass stem, no plastic, (12, 15, 20) inch chrome plated risers and (shallow, deep, bell) (steel, brass) or (forged brass with set screw) flange. Inlet shall be (3/8, 1/2) inch IPS. Outlet shall be (3/8, 1/2) inch (IPS, compression). Supply kit shall be McGuire \_\_\_\_\_. Supply kit shall be low lead certified by recognized authority and bear manufacturer and testing mark.

**P-3**



## Washbrook® FloWise® Universal Urinal VITREOUS CHINA



### Washbrook® FloWise® Universal Urinal

- Vitreous china
- Ultra High Efficiency, Low Consumption. Operates in the range of 0.125gpf to 1.0gpf (0.5 Lpf to 3.8 Lpf)
- Flushing rim
- Elongated 14" rim from finished wall
- Washout flush action
- Extended sides for privacy
- 3/4" inlet spud
- Outlet connection threaded 2" inside (NPTF)
- 2 wall hangers
- Fixture only
- Strainer included
- Meets ASME flush requirements at 0.125 to 1.0 gpf

☒ **6590.001 Universal Top spud**

☐ ~~6515.001 Universal Back spud~~

#### Nominal Dimensions:

360 x 480 x 664mm

(14-1/8" x 18-7/8" x 26-1/8")

Recommended working pressure – between  
20 psi at valve when flushing and 80 psi static

#### Compliance Certifications -

##### Meets or Exceeds the Following Specifications:

- ASME A112.19.2-2008/CSA B45.1-08 for Vitreous China Fixtures



SEE REVERSE FOR ROUGHING-IN DIMENSIONS

#### To Be Specified:

- ☐ Color: ☒ **White**
- ☐ Flush Valve:

##### 1.0 gpf Flush Valve: Sensor-Operated:

- ☐ American Standard Selectronic® #6063.101.002 DC Power (Top Spud)
- ☐ American Standard Selectronic® #6062.101.002 AC Power (Back Spud)

##### 1.0 gpf Flush Valve: Manual-Operated:

- ☐ American Standard # 6045.101.002

##### 0.5 gpf Flush Valve: Sensor-Operated:

- ☐ American Standard Selectronic® #6063.051.002 DC Power (Top Spud)
- ☐ American Standard Selectronic® #6062.051.002 AC Power (Back Spud)

##### 0.5 gpf Flush Valve: Manual-Operated:

- ☐ American Standard #6045.051.002

##### 0.125 gpf Flush Valve: Sensor-Operated:

- ☐ American Standard Selectronic® #6063.013.002 DC Power (Top Spud)
- ☐ American Standard Selectronic® #6062.013.002 AC Power (Back Spud)

##### 0.125 gpf Flush Valve: Manual-Operated:

- ☐ American Standard #6045.013.002



MEETS THE AMERICANS WITH DISABILITIES ACT GUIDELINES  
AND ANSI A117.1 ACCESSIBLE AND USABLE BUILDINGS AND  
FACILITIES - CHECK LOCAL CODES.

- When installed so top of rim is 432mm (17") MAXIMUM from finished floor.

CEC

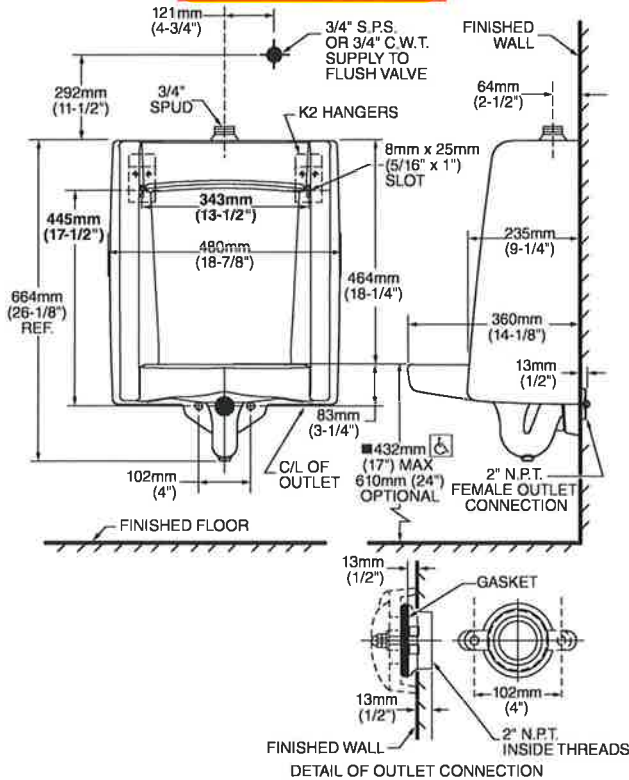


When used with  
0.125 gpf  
urinal flush valve

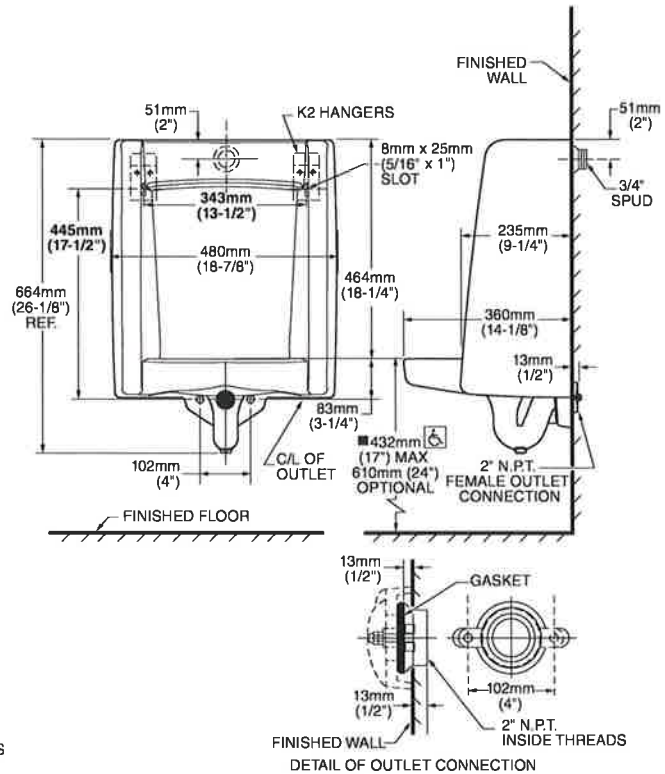
When used with  
0.125 or 0.5 gpf  
urinal flush valve

ADA  
COMPLIANT

**6590.001 TOP SPUD**



**6515.001 BACK SPUD**



MEETS THE AMERICANS WITH DISABILITIES ACT GUIDELINES  
AND ANSI A117.1 ACCESSIBLE AND USABLE BUILDINGS AND  
FACILITIES - CHECK LOCAL CODES.

• When installed so top of rim is 432mm (17") MAXIMUM from finished floor.

**NOTES:**

FLUSH VALVE NOT INCLUDED AND MUST BE ORDERED SEPARATELY.  
PROVIDE SUITABLE REINFORCEMENT FOR ALL WALL SUPPORTS.

**IMPORTANT:** Dimensions of fixtures are nominal and may vary within  
the range of tolerances established by ANSI Standard A112.19.2. These  
measurements are subject to change or cancellation. No responsibility is  
assumed for use of superseded or voided pages.





## ZEMS6003AV-IS

Hardwired Exposed Flush Valve for Urinals

TAG P-3

### Architectural/Engineering Specification:

Exposed, quiet diaphragm-type, chrome plated flushometer valve with a polished exterior. Complete with chloramine resistant, dual seal diaphragm with a clog resistant by-pass. The valve incorporates a motor actuator, an integral infrared convergence-type proximity sensor and a manual sensor with capacitive sensing push button override, high impact resistant polycarbonate housing and chrome plated plastic cover with manual override push button and 10 degree angled sensor.

### Product Features:

- Proprietary Dezincification resistant low lead brass alloy
- Control Stop has internal siphon-guard protection and vandal resistant stop cap, Sweat solder kit, wall flange with set screw.
- High back pressure Vacuum Breaker with one piece hex coupling nut
- Chloramine resistant Internal seals
- Adjustable tailpiece
- Spud coupling and flange for top spud connection

### Compliance and Certification:

- ADA Compliant
- Complies with ASSE 1037/ASME A112.1037/CSA B125.37



\*This product should be used with a WaterSense labeled counterpart with a compatible flush volume to ensure that the entire system meets the requirements for water efficiency and performance.



### Flow Options:

	Flush Volume	WaterSense* Labeled
<input type="checkbox"/> -ULF	0.125 apf	✓
<input checked="" type="checkbox"/> -EWS	0.5 gpf	✓
<input type="checkbox"/> -WS1	1.0 gpf	

### Suffix Options:

- ☐ -FM12 Floor Mount 12" Rough In
- ☐ -YJ Split Ring Pipe Support
- ☐ -YK Solid Ring Pipe Support
- ☐ Other

### Valve Height Options:

	Product No.	A	B
<input checked="" type="checkbox"/>	ZEMS6003AV-IS	11 1/2" [292]	9 7/8 [251]
<input type="checkbox"/>	ZEMS6003AV-1-IS	16" [406]	14 3/8 [365]
<input type="checkbox"/>	ZEMS6003AV-2-IS	24" [610]	22 3/8 [568]

### Accessories (Order separate as specified)

P6900-ACA-BA 7.6VDC Plug-In ACA Power Supply

Powers up to 4 valves

P6000-HW6

7.6VDC Hardwired Power Converter

Powers up to 8 valves

P6000-MJ

Mini Junction Box

Architectural/Engineering Approval

The information contained in this document is subject to change without notice.  
Please contact Zurn for most up to date information.

Rev. A | Date: 12/06/22 | C.N. No. 144844 | Prod./Dwg. No. SS ZEMS6003AV-IS

Patent zurn.com/patents

US 1,855,091 ZURN CANADA 1,877,892.5216

ZURN.COM

by ZURN ELKAY Water Solutions

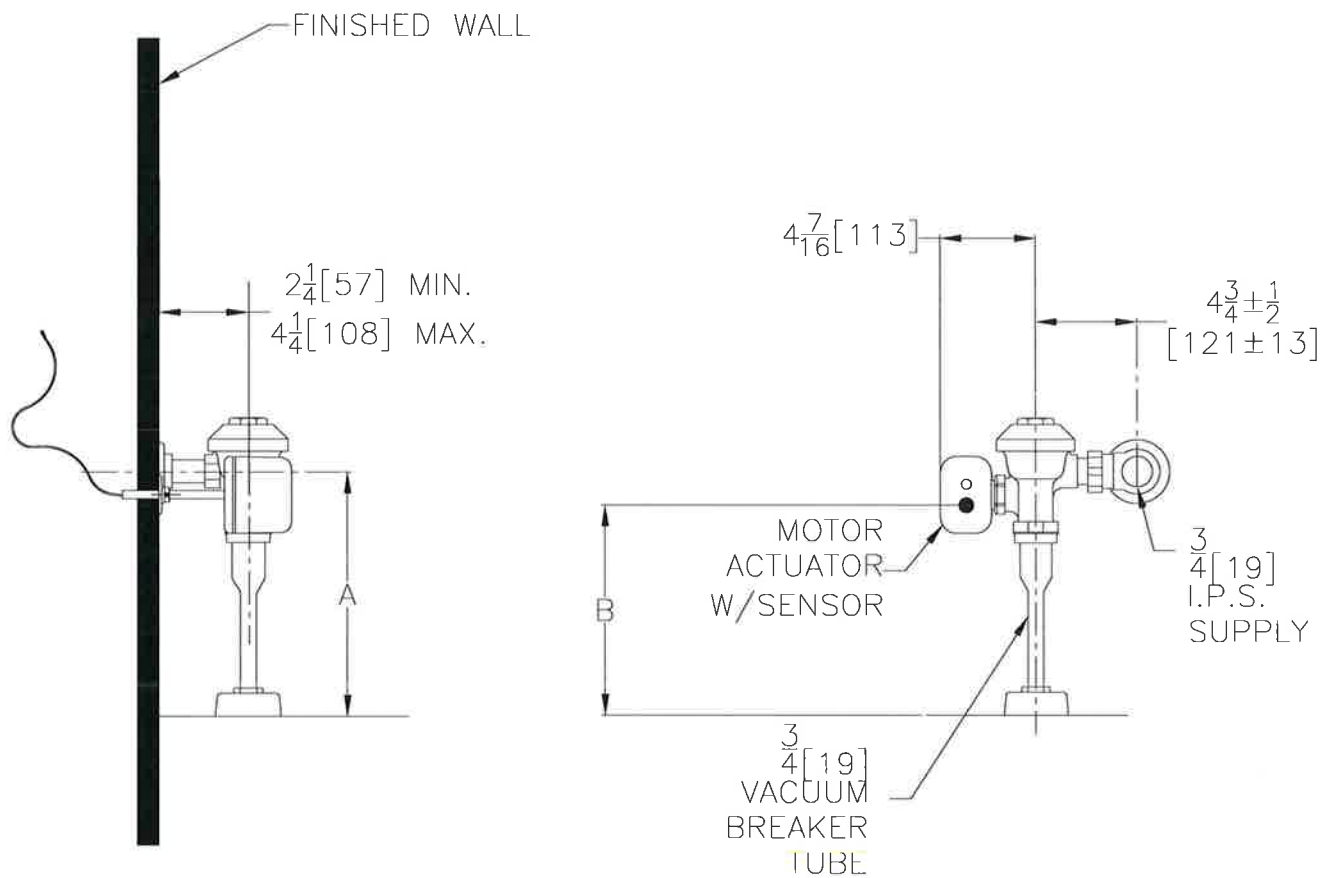


## ZEMS6003AV-IS

Hardwired Exposed Flush Valve for Urinals

TAG \_\_\_\_\_

### Rough-in/Overview dimensions



Rev. A | Date: 12/06/22 | C.N. No. 144844 | Prod./Dwg. No. SS ZEMS6003AV-IS

Patent [zurn.com/patents](http://zurn.com/patents)

US 1.855.0NE.ZURN CANADA 1.877.892.5216

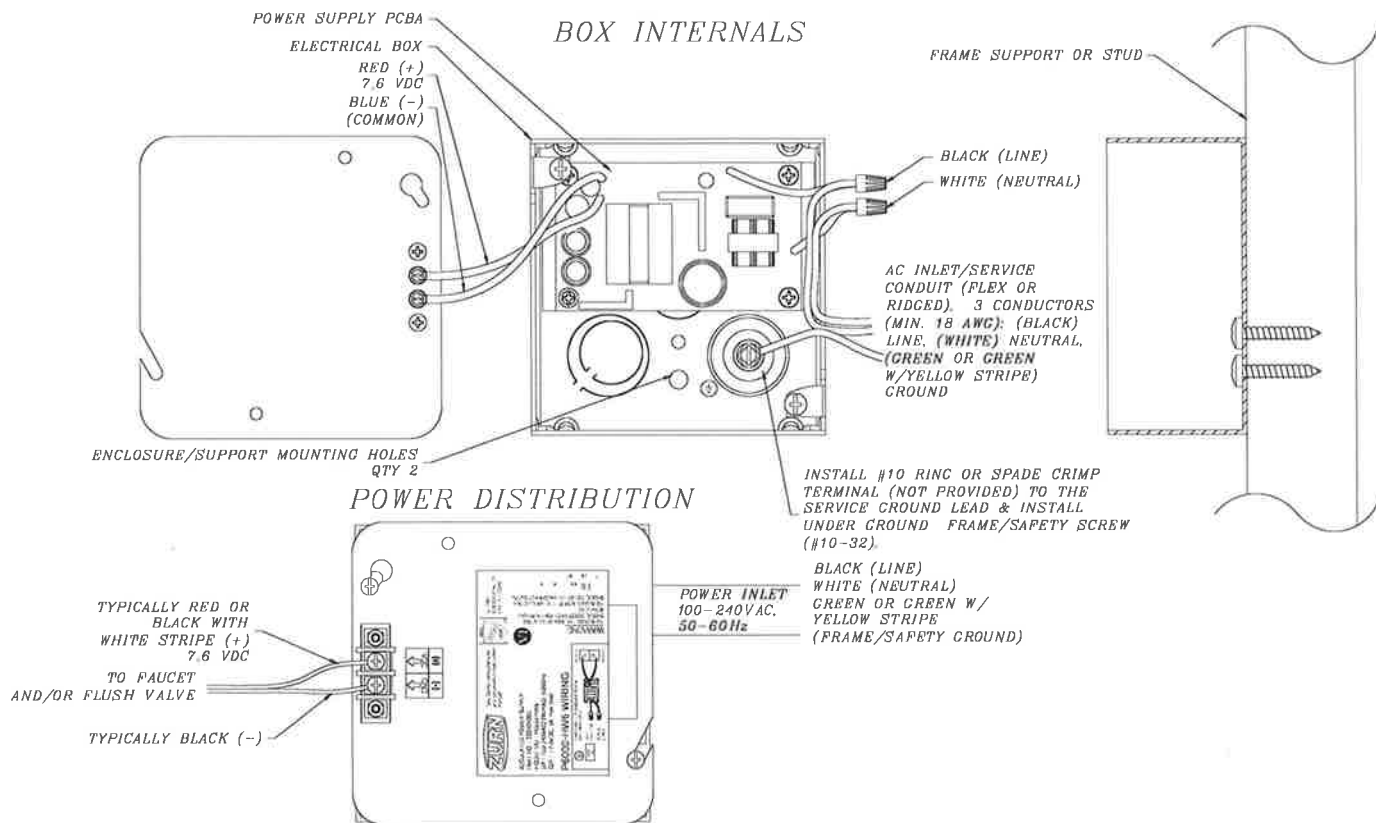
[ZURN.COM](http://ZURN.COM)

by **ZURN ELKAY** Water Solutions



## P6000-HW6

### 7.6 VDC Hardwired Power Converter for Flush Valves and Faucets



**ENGINEERING SPECIFICATION: ZURN P6000-HW6 Power Converter** - The Hardwired Power Converter is a 7.6 VDC regulated, 2.0A power supply that will operate up to: (8) ZEMS or ZEMS-IS Sensors/Actuators, (8) ZESS Sensors/Solenoids, (8) sensor faucets, or (8) Pint Urinal valves. The unit shown above is integrated into a 4"L x 4"W x 2-1/8"D electrical box. The AC input connections are terminated within the electrical box. The 7.6 VDC output terminals are externally mounted to the cover plate.

#### Notes:

1. Mounting hardware (AC inlet conduit/cable clamp and enclosure-frame mounting screws) are NOT provided.

**Typical Rough-In:** The 3 input conductors (line, neutral and frame ground) are routed within conduit to the P6000-HW6 and the AC inlet and the frame/safety ground leads are terminated within the assembly. The low voltage, 7.6 DC, output connections are terminated externally and depending upon the installation area, appropriate cable/conductor insulation must be selected to meet local codes (conduit not required for the low voltage output conductor paths).

Architectural/Engineering Approval

The information contained in this document is subject to change without notice.  
Please contact Zurn for most up to date information.

ZURN INDUSTRIES, LLC. ♦ COMMERCIAL BRASS OPERATION ♦ 5900 ELWIN BUCHANAN DRIVE ♦ SANFORD NC 27330

Phone: 1-800-997-3876 ♦ Fax: 919-775-3541 ♦ World Wide Web: [www.zurn.com](http://www.zurn.com)

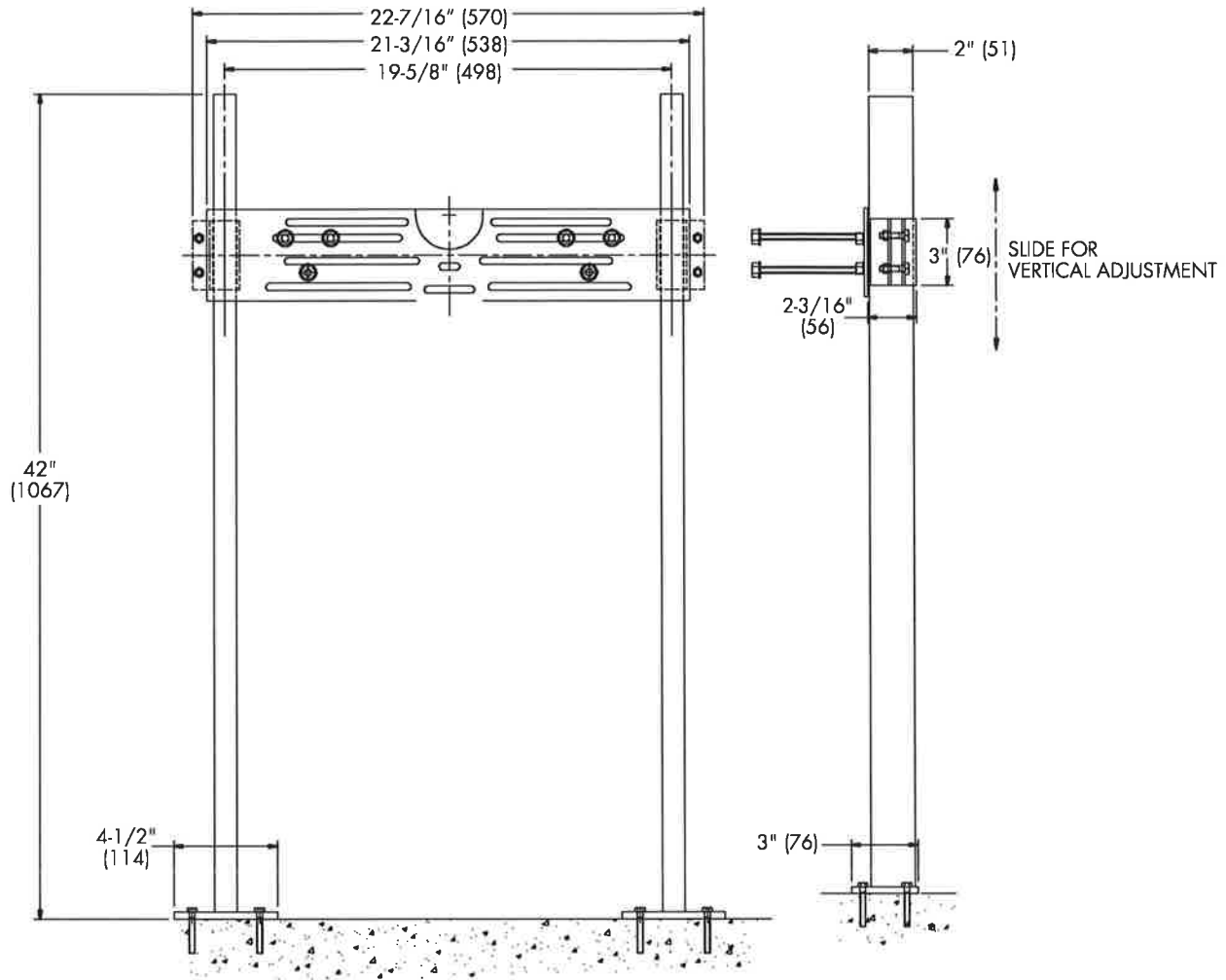
In Canada: ZURN INDUSTRIES LIMITED ♦ 7900 Goreway Drive Unit 10 ♦ Brampton, Ontario L6T5W6 ♦ Phone: 905-405-8272 Fax: 905-405-1292



CA-311  
Tag: P-3

## Floor Mounted Urinal Carrier

**SPECIFICATION:** Watts Drainage CA-311 epoxy coated floor mounted urinal carrier with heavy gauge steel offset uprights with welded feet, universal steel hangar support plate with integral mounting brackets and plated hardware.



Note: Anchor legs to concrete floor with minimum  
1/2" (13) anchor bolts (by others).

Job Name **Stone Bank** Contractor **Comfort Systems USA**  
Job Location **LR** Contractor's P.O. No. \_\_\_\_\_  
Engineer **Batson** Representative **Sanders Supply**

WATTS Drainage reserves the right to modify or change product design or construction without prior notice and without incurring any obligation to make similar changes and modifications to products previously or subsequently sold. See your WATTS Drainage representative for any clarification. Dimensions are subject to manufacturing tolerances.



Specification Drainage Products

USA: 100 Watts Road, Spindale, NC, 28160-2298; TEL: 828-288-2179 TOLL-FREE: 1-800-338-2581 [www.watts.com](http://www.watts.com)

**P-4**

**TERRAZZO**

**12" MOP SERVICE BASIN**

- One piece, precast terrazzo made of black and white marble chips in gray portland cement to produce a compressive strength not less than 3000 P.S.I. seven days after casting.
- Terrazzo surface shall be ground and polished with all air holes or pits grouted and excess removed.
- Shoulders shall be not less than 12" high outside and 10" inside at lowest wall.
- Shoulder width not less than 2" on all sides with a 1/4" pitch towards the inside.
- Standard drain body is stainless steel cast integrally and provides for a caulked lead connection not less than 1" deep to a 3" pipe.
- Stainless steel strainer # 1453BB
- Made in the U.S.A.

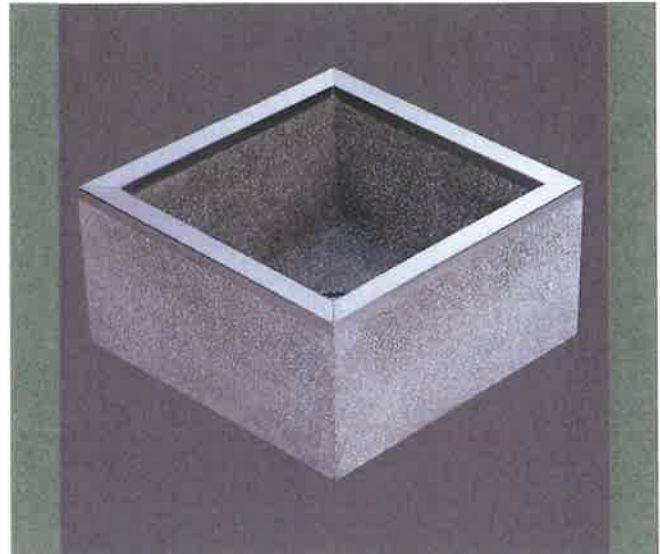
**Options:**

- QDC quick drain connectors
- Stainless steel tiling flanges available with up-charge. Must be custom order.
- Vandal proof drain. Must be custom order.

- ☐ **TSB100, TSB300, TSB500, TSB700 Series** with stainless steel caps on all curbs
- ☐ **TSB200, TSB400, TSB600, TSB800 Series** with plain curbs

**Optional Components:**

- ☐ **830AA Mop Service Basin Fitting**
- ☐ **832AA Hose & Hose Bracket**
- ☐ **889CC Mop Hanger**
- ☐ **1239BB Aluminum Bumperguard with Vinyl Insert**
- ☐ **833AA Silicone Sealant**
- ☐ **MSG Wall Guards - Stainless Steel**
- Wall Guards are manufactured of heavy gauge stainless steel and help protect walls adjacent to Mop Basin. Two panels are required for corner installations. Optional third panel is required for a recessed installation. (MSG2424; MSG2828; MSG3232; MSG3624; MSG3636)



Shown: TSB500

SEE REVERSE FOR ROUGHING-IN DIMENSIONS

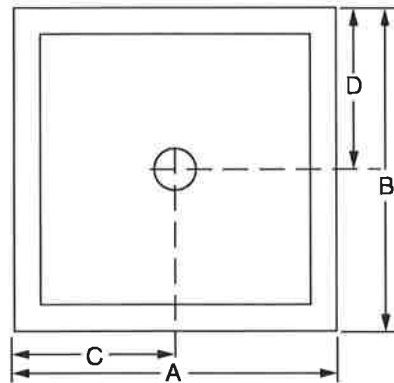
**INSTALLATIONS:** Terrazzo Mop Basins **must** be installed on a 1/2" layer of mortar in order that the mop basin be level and to prevent cracking. Failure to install terrazzo without a mortar bed will void the warranty. Installations require a 1/4" clearance between mop basin and wall.

**IMPORTANT:** Rough-in dimensions may vary 1/2" (13mm) and are subject to change or cancellation without prior notice.

**CERTIFICATIONS:**

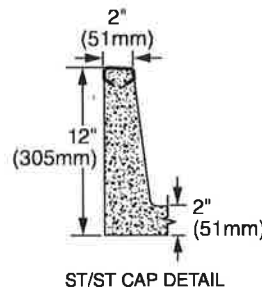
All models are UPC and CUPC Listed



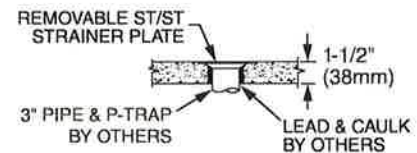


**Series TSB100**  
With Stainless Steel Caps On All Curbs

MODEL	SIZE	A	B	C	D
TSB100	24" x 24" x 12"	24	24	12	12
TSB300	32" x 32" x 12"	32	32	16	16
TSB500	36" x 36" x 12"	36	36	18	18
TSB700	36" x 24" x 12"	36	24	18	12



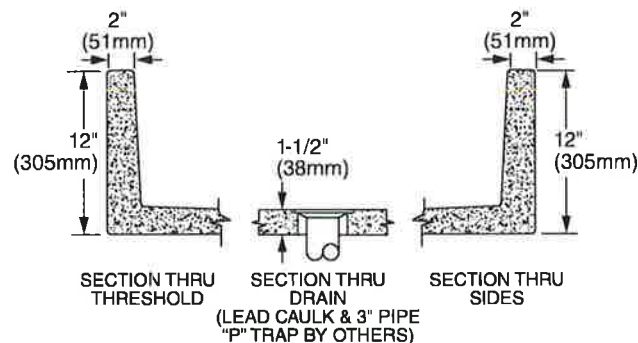
ST/ST CAP DETAIL



SECTION THRU DRAIN

**Series TSB200**  
With Plain Curbs

MODEL	SIZE	A	B	C	D
TSB200	24" x 24" x 12"	24	24	12	12
TSB400	32" x 32" x 12"	32	32	16	16
TSB600	36" x 36" x 12"	36	36	18	18
TSB800	36" x 24" x 12"	36	24	18	12



**IMPORTANT:** Roughing in dimensions may vary 1/2" and are subject to change or cancellation without prior notice.





# T&S BRASS AND BRONZE WORKS, INC.

2 Saddleback Cove / P.O. Box 1088  
Travelers Rest, SC 29690

Model No.

**B-0665-BSTP**

Item No.

Travelers Rest, SC: 800-476-4103 • Simi Valley, CA: 800-423-0150 • Fax: 864-834-3518 • www.tsbrass.com



**ADA Compliant**

This Space for Architect/Engineer Approval

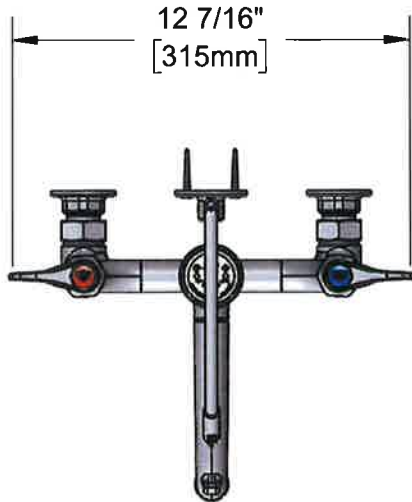
Job Name \_\_\_\_\_ Date \_\_\_\_\_

Model Specified \_\_\_\_\_ Quantity \_\_\_\_\_

Customer/Wholesaler \_\_\_\_\_

Contractor \_\_\_\_\_

Architect/Engineer \_\_\_\_\_



Support Rod w/  
Wall Bracket &  
Mounting Screws

Items Not Shown  
for Clarity

B-0969  
1/2" NPT Vacuum  
Breaker

Quarter-Turn  
Eterna Cartridges w/  
Spring Check &  
Lever Handles w/  
Color Coded Indexes

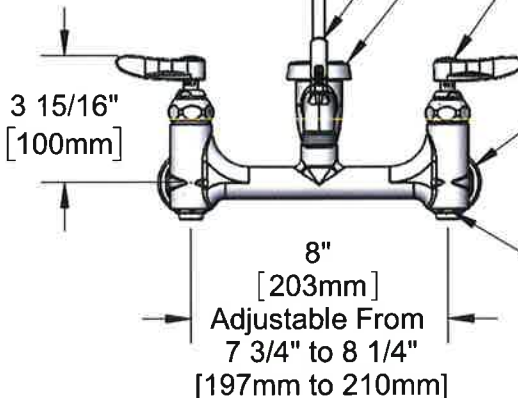
Garden Hose  
Male Outlet

Ø 2" [51mm]  
Flanges w/  
1/2" NPT  
Female Inlets

Built-In Service  
Stops

Mounting  
Surface

14 5/16"  
[364mm]



2 11/16"  
[68mm]

9 1/8"  
[232mm]

## Product Specifications:

8" Wall Mount Service Sink, Quarter-Turn Eterna Cartridges w/ Spring Checks, Lever Handles, Upper Support Rod, Built-In Stops, Garden Hose Male Outlet, Polished Chrome Finish, 1/2" NPT Vacuum Breaker & 1/2" NPT Female Inlets

## Product Compliance:

ASME A112.18.1 / CSA B125.1  
NSF 61 - Section 9  
NSF 372 (Low Lead Content)  
ANSI A117.1 (ADA)  
ASSE 1001 (VB)



# T&S BRASS AND BRONZE WORKS, INC.

2 Saddleback Cove / P.O. Box 1088  
Travelers Rest, SC 29690

Model No.

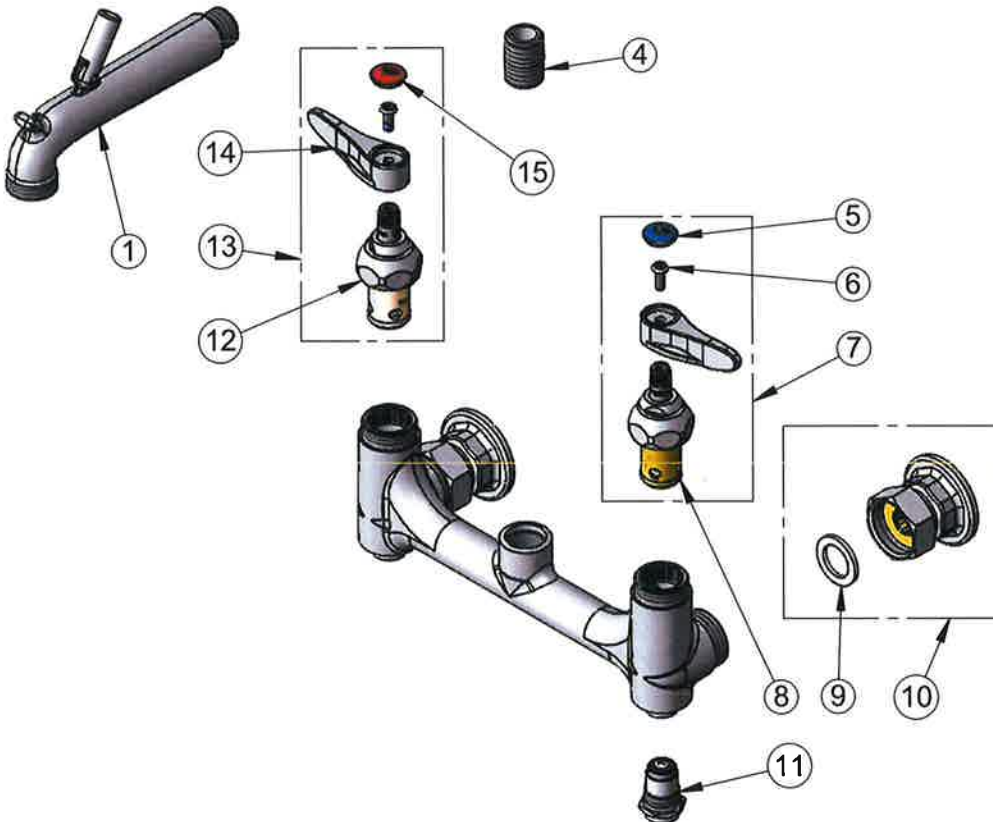
**B-0665-BSTP**

Item No.

Travelers Rest, SC: 800-476-4103 • Simi Valley, CA: 800-423-0150 • Fax: 864-834-3518 • www.tsbrass.com



ITEM NO.	SALES NO.	DESCRIPTION
1	009545-40	Spout w/ Male GH Outlet & Upper Clevis - Polished Chrome
2	009546-40	Upper Support Rod
3	B-0969	1/2" NPT Vacuum Breaker
4	002534-25	Close Nipple, 1/2" NPT
5	018506-19NS	Blue Button Index, Press-in
6	000925-45	Lab Handle Screw
7	002711-40NS	Quarter-Turn Eterna Cartridge w/ Spring Check, Handle, Blue Index & Screw, LTC
8	012442-40NS	Quarter-Turn Eterna Cartridge w/ Spring Check, LTC
9	001019-45	Coupling Nut Washer
10	00AA	1/2" NPT Female Eccentric Flange
11	163A	Built-in Service Stop
12	012443-40NS	Quarter-Turn Eterna Cartridge w/ Spring Check, RTC
13	002712-40NS	Quarter-Turn Eterna Cartridge w/ Spring Check, Handle, Red Index & Screw, RTC
14	001638-45NS	Lever Handle (New Style)
15	001193-19NS	Red Button Index, Press-in



## Product Specifications:

8" Wall Mount Service Sink, Quarter-Turn Eterna Cartridges w/ Spring Checks, Lever Handles, Upper Support Rod, Built-In Stops, Garden Hose Male Outlet, Polished Chrome Finish, 1/2" NPT Vacuum Breaker & 1/2" NPT Female Inlets

## Product Compliance:

ASME A112.18.1 / CSA B125.1  
NSF 61 - Section 9  
NSF 372 (Low Lead Content)  
ANSI A117.1 (ADA)  
ASSE 1001 (VB)

**P-5**



We Know Water.

## UNIVERSAL BARRIER-FREE VERSACOOLER® II WITH CONTACTLESS VERSAFILLER® WITH VERSAFILTER™ III

• **PG8FEBFSL** • **PGFEBFSL**

### Suggested Specification

Model PG8FEBFSL shall deliver 8.0 gph of 50°F water at 90°F ambient and 80°F inlet water per ASHRAE 18 testing. Model PGFEBFSL is a non-refrigerated model and delivers ambient drinking water. Shall include the VersaFiller Sports Bottle Filler with contactless activation and laminar flow; fountains shall have four push pads to activate the manual flow of water for the cooler. Key VersaFiller components contain Freshield®, which utilizes a silver-based antimicrobial compound to protect the surfaces from discoloration, odors and degradation caused by the growth of micro-organisms and mildew. Basin shall be designed to eliminate splashing and standing water. Water saver bubbler to reduce waste water by 50% and shall have flexible guard and operate between 20 and 100 PSI. Shall use R-134a refrigerant. Shall comply with ANSI 117.1 and ADA. Shall be listed by Underwriters Laboratories to US and Canadian standards, and comply with NSF/ANSI 61 and NSF/ANSI 372.



### Installation

- Prior to rough-in consult with local, state and federal codes for proper mounting height
- Shipped with complete instructions and wall mounting brackets
- Removable side and front panels provide easy access for installation.

### Finishes

- Standard: Greystone powder coat on galvanized steel  
~~Sandstone powder coat on galvanized steel; stainless steel (at additional cost)~~

### Options

- One piece chrome plated brass bubbler (036700-001)

### Limited 5-Year Warranty

(Continental limits of the United States and Canada)  
Five years on the sealed refrigeration system and most component parts. Detailed warranty certificate enclosed with each water cooler; sample available upon request.

### Export Warranty

One year on components parts. Detailed warranty certificate enclosed with each drinking fountain; sample copy available upon request.

### Certifications/Compliance

- Certified to UL 399 and CAN/CSA C22.2 No.120 (electric water coolers only)
- Product Certified to NSF/ANSI Standard 61-G & 372 and conforms with the lead content requirements for "Lead Free" plumbing as defined by California, Vermont, Maryland, and Louisiana state laws and the U.S. Safe Drinking Water Act
- These water coolers comply with the requirements of ADA (Americans with Disabilities Act) when properly installed



**WARNING:**  
Cancer and Reproductive Harm  
[www.P65Warnings.ca.gov](http://www.P65Warnings.ca.gov)



	PG8FEBFSL	PGFEBFSL
Features:	<ul style="list-style-type: none"><li>• Built-in 100 micron strainer stops particles before they enter the waterway</li><li>• Waterways are lead-free in materials &amp; construction</li><li>• Flexible one-piece water saver bubbler infused with silver-based antimicrobial additive</li><li>• Stainless steel top and heavy duty galvanized steel frame</li><li>• Contactless activation on VersaFiller bottle filler</li><li>• VersaFilter III located in top bottle filler for easy filter replacement with Tilt 'N Tether</li><li>• External access to stream height adjustment on lower Versacooler fountain</li><li>• External access to thermostat with tool activated OFF position</li><li>• Includes integral self-scouring waste drain</li><li>• Built-in filter monitor and bottle counter</li><li>• Universal design: high right or high left</li></ul>	
Filtration:	VersaFilter III is Certified to NSF/ANSI 42 and 53 for lead, Particulate Class I, chlorine, taste and odor reduction to 4,750 gallons	
Power:	115 Volts, 60 Hz	
Activation By:	Contactless Sensor on Bottle Filler and Manual Activation on Fountains	
Mounting Type:	Wall Mounted	
Chilling Option:	8.0 gph*	Non-refrigerated
Full Load Amps:	5.0 amps	0.2 amps
Rated Watts:	500	11
Approx. Net Weight	83	52
Installation Location:	Indoor	

\*Industry standard rating condition at 90°F ambient, 80°F inlet water and 50°F drinking water temperature

Specifications subject to change without notice

**NOTES:**

1. TRAP, STOP VALVE AND ELECTRICAL OUTLET NOT FURNISHED.
2. ALLOW 4 INCHES [102 MM] MIN. PER SIDE FOR VENTILATION, PER SIDE FOR VENTILATION.
3. RECOMMENDED ADULT BARRIER FREE HEIGHT INSTALLATION **SHOWN**. REDUCE HEIGHT BY 3 INCHES FOR INSTALLATIONS USED **PRIMARILY** BY CHILDREN AGES 12 AND YOUNGER. UNIT SHALL ALSO HAVE A MINIMUM CLEAR FLOOR **SPACE 30[760] BY 48[1220]** ADJUST VERTICAL DIMENSIONS AS REQUIRED TO COMPLY WITH FEDERAL, STATE, AND LOCAL CODES.

**VERTICAL DIMENSIONS AS REQUIRED TO COMPLY WITH FEDERAL, STATE, AND LOCAL CODES.**

**THIRD ANGLE PROJECTION**

**ROUGHING-IN AND DIMENSIONAL DRAWING**

**4. 115v GROUNDING NORTH AMERICAN DUPLEX RECEPTACLE REQUIRED. THIS DRINKING WATER COOLER IS INTENDED TO BE CONNECTED TO A 20A MINIMUM GROUND FAULT CIRCUIT INTERRUPTING (GFCI) DEVICE TO MEET UL REQUIREMENTS.**

**5. ALL DIMENSIONS ARE IN INCHES. DIMENSIONS IN BRACKETS [ ] ARE IN MILLIMETERS.**





# McGuire Manufacturing Co., Inc.

60 Grandview Court  
Cheshire, Connecticut 06410  
(203) 699-1801 Fax (203) 699-1813  
customerservice@mcguiremfg.com mcguiremfg.com

## PRODUCT SPECIFICATION

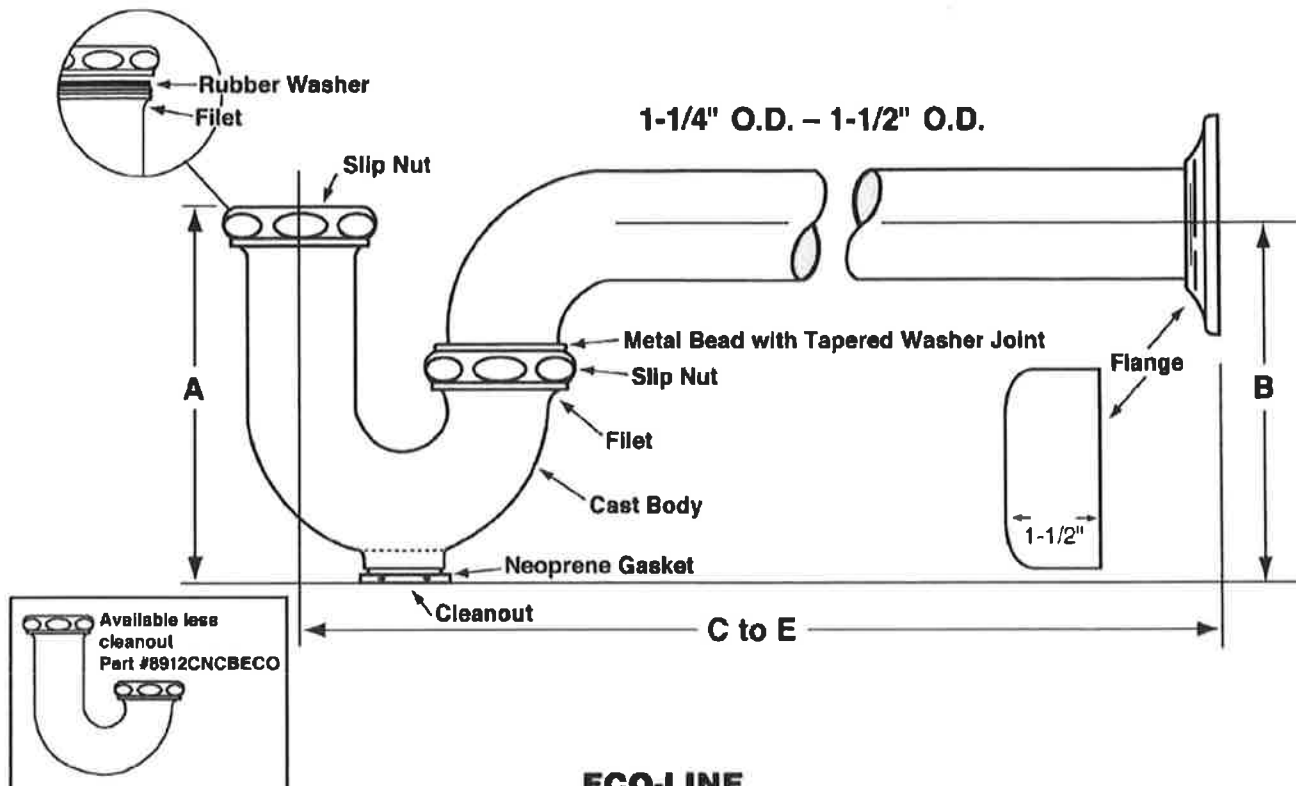
Part No.

**C8872CECO**

**Cast Body P-Trap With  
or Without Cleanout**

Job Name:

Submittal Number:



### ECO-LINE

#### ROUGHING MEASUREMENTS

MODEL NO.	TRAP DIMENSIONS		A	B	C to E	FLANGE	SLIP NUT
	INLET	OUTLET					
<b>C8872CECO</b>	1-1/4"	1-1/4"	4-1/2"	4-1/2"	10"	Shallow	Zinc

**FED SPEC W.W.P. 541  
CAST BRASS P-TRAP  
MINIMUM SEAL 2"**



ASME A112.18.2/CSA B125.2

### Specifications:

Chrome plated P-Trap shall be cast brass body, with or without cleanout, with 17 gauge seamless tubular wall bend and flange.



#### WARNING:

This product can expose you to chemicals including lead, which is known to the State of California to cause cancer, and birth defects or other reproductive harm. For more information go to [www.P85Warnings.ca.gov](http://www.P85Warnings.ca.gov).





**McGuire Manufacturing Co., Inc.**  
60 Grandview Court  
P.O. Box 746 • Cheshire, CT 06410  
203-699-1801 • Fax: 203-699-1813  
www.mcguiremfg.com

## PRODUCT SPECIFICATION

### Part No.

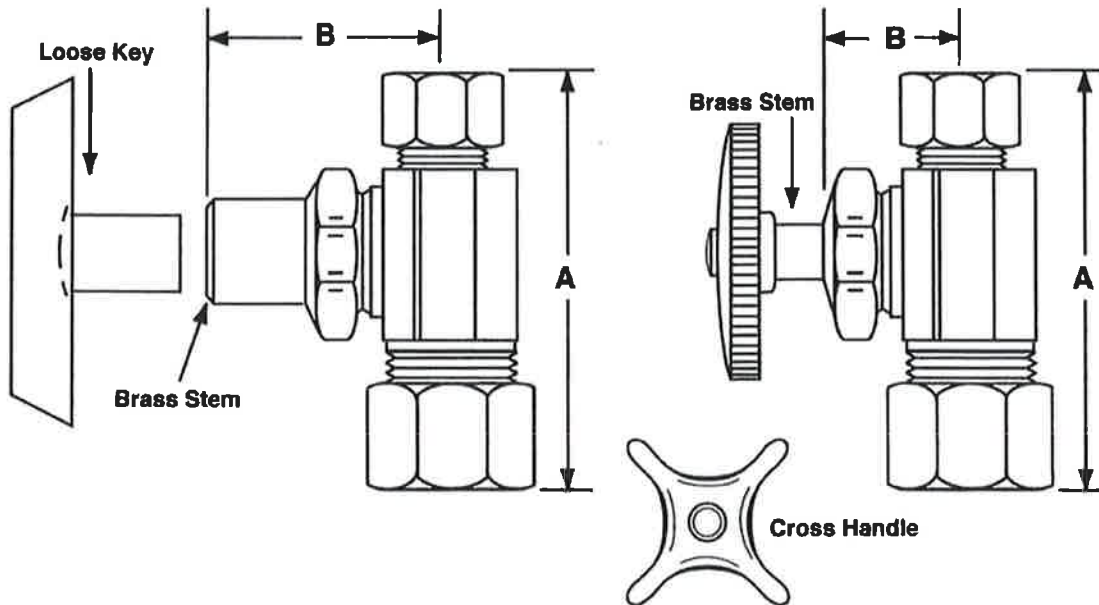
LFST17, **LFST17LK**, LFST17X,  
LFST18, LFST18LK, LFST18X

**Straight Supply Stop**  
**Nominal x O.D.**

Job Name: \_\_\_\_\_

Submittal Number: \_\_\_\_\_

## Compression to Compression



NO.	DESCRIPTION	ROUGHING MEASUREMENTS	
		A	B
LFST17	1/2" Nominal x 3/8" O.D.	2-1/4"	7/8"
<b>LFST17LK</b>	1/2" Nominal x 3/8" O.D.	2-1/4"	1-5/8"
LFST17X	1/2" Nominal x 3/8" O.D.	2-1/4"	7/8"
LFST18	1/2" Nominal x 1/2" O.D.	2-1/4"	7/8"
LFST18LK	1/2" Nominal x 1/2" O.D.	2-1/4"	1-3/4"
LFST18X	1/2" Nominal x 1/2" O.D.	2-1/4"	7/8"

**LK** designates *Loose Key*

**X** designates *Heavy Brass Cross Handle*

See options and accessories section for details on product variations.

ASME A112.18.1-2011/CSA B125.1-11



## Specifications:

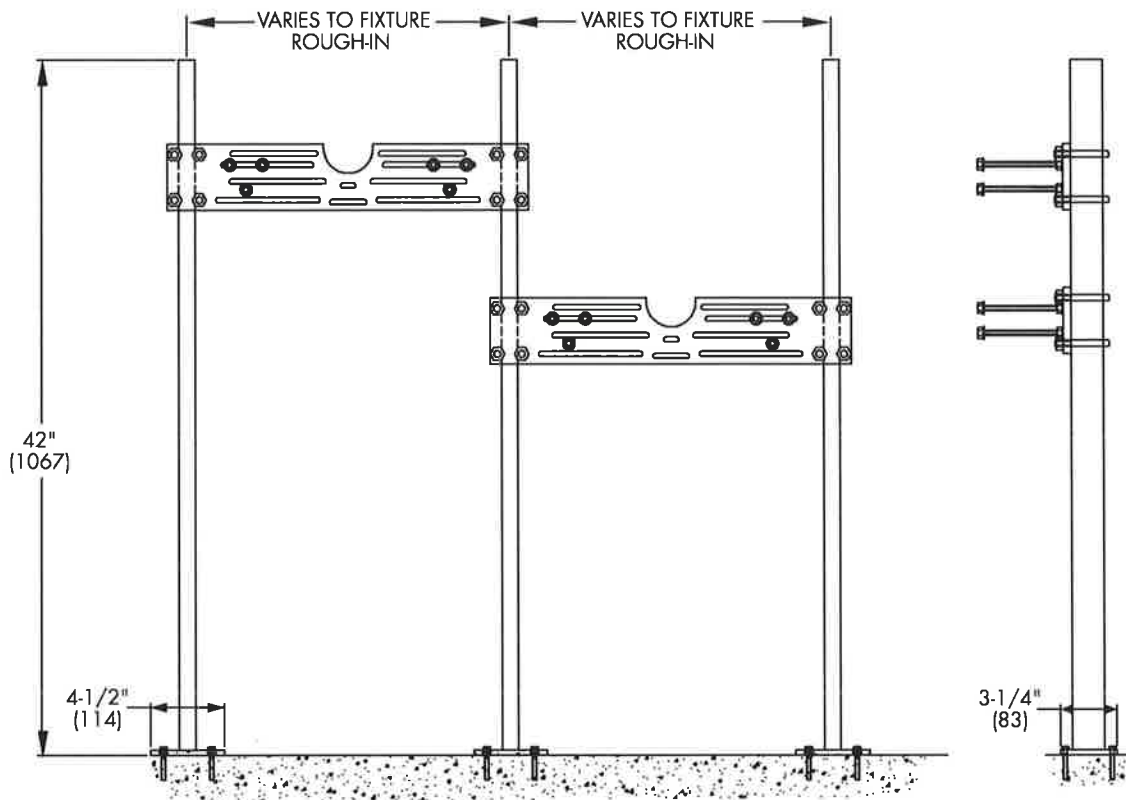
Chrome plated brass, supply stop valve with full turn brass stem. Inlet shall be (3/8, 1/2) inch (IPS, sweat, compression). Outlet shall be (3/8, 1/2) inch (IPS, compression). Supply stop valve shall be McGuire \_\_\_\_\_. Supply stop valve shall be certified by recognized testing authority and bear manufacturer and testing mark.

**CA-431-1**

Tag: P-5

**Floor Mounted Plate Type  
Lavatory/Water Cooler Carrier**

**SPECIFICATION:** Watts Drainage CA-431-1 floor mounted bi-level water cooler carrier with heavy gauge steel uprights with integral welded feet, universal steel hanger support plate, and plated hardware.



Note: Anchor legs to concrete floor with minimum 1/2" (13) anchor bolts (by others).

Job Name **Stone Bank** Contractor **Comfort Systems USA**  
Job Location **LR** Contractor's P.O. No. \_\_\_\_\_  
Engineer **Batson** Representative **Sanders Supply**

WATTS Drainage reserves the right to modify or change product design or construction without prior notice and without incurring any obligation to make similar changes and modifications to products previously or subsequently sold. See your WATTS Drainage representative for any clarification. Dimensions are subject to manufacturing tolerances.

**Specification Drainage Products**USA: 100 Watts Road, Spindale, NC, 28160-2298; TEL: 828-288-2179 TOLL-FREE: 1-800-338-2581 [www.watts.com](http://www.watts.com)

**P-6A**

### PRODUCT SPECIFICATIONS

Elkay Lustertone<sup>®</sup> Classic Stainless Steel 22" x 22" x 7-5/8" Single Bowl Drop-in Sink. Sink is manufactured from 18 gauge 304 Stainless Steel with a Lustrous Satin finish, Center drain placement, and Bottom only pads.

Installation Type:	Drop-in
Material:	304 Stainless Steel
Finish:	Lustrous Satin
Gauge:	18
Sound Deadening:	Bottom only pads
Number of Bowls:	1
Sink Dimensions:	22" x 22" x 7-5/8"
Bowl 1 Dimensions:	19" x 16" x 7-1/2"
Drain Size:	3-1/2" (89mm)
Drain Location:	Center
Minimum Cabinet Size:	27"
Mounting Hardware:	Part # 64090012 included for countertops up to 3/4" (19mm) thick
Template Included:	No
Cutout Template #:	1000001248

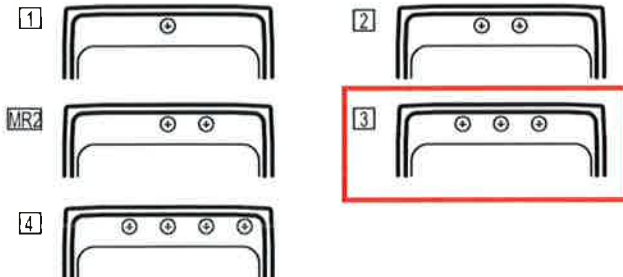
Template is available for download at [elkay.com](http://elkay.com). CAD software will be required to open the template.

#### Cutout Dimensions for Drop-in Installation:

21-3/8" x 21-3/8" (543mm x 543mm) with 1-1/2" (38mm) corner radius

#### Hole Drilling Configurations:

1-1/2" (38mm) Diameter Faucet Holes on 4" (102mm) Centers



A Century of Tradition and Quality. For more than 100 years, Elkay has been making innovative products and providing exceptional customer care. We take pride in offering plumbing products that make life easier, inspire change and leave the world a better place.

**KBB READERS' CHOICE AWARDS 2023**



**Product Compliance:** ASME A112.19.3/CSA B45.4



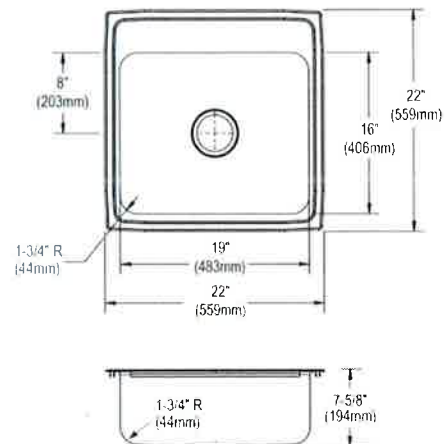
Sinks are listed by IAPMO<sup>®</sup> as meeting the applicable requirements of the Uniform Plumbing Code<sup>®</sup>, International Plumbing Code<sup>®</sup>, and National Plumbing Code of Canada.

[Clean and Care Manual \(PDF\)](#)

[Installation Instructions \(PDF\) - 1000005236](#)

[Warranty \(PDF\)](#)

**Similar models are available with:** 4" 4-1/2" 5" 6" and 6-1/2" depths, Quick-Clip Mounting System



PART: \_\_\_\_\_ QTY: \_\_\_\_\_  
 PROJECT: \_\_\_\_\_  
 CONTACT: \_\_\_\_\_  
 DATE: \_\_\_\_\_  
 NOTES: \_\_\_\_\_  
 APPROVAL: \_\_\_\_\_

In keeping with our policy of continuing product improvement, Elkay reserves the right to change product specifications without notice. Please visit [elkay.com](http://elkay.com) for the most current version of Elkay product specification sheets. This specification describes an Elkay product with design, quality, and functional benefits to the user. When making a comparison of other producers' offerings, be certain these features are not overlooked.

## PRODUCT SPECIFICATIONS

Elkay 8" Centerset with Exposed Deck Laminar Flow Faucet with 8" Gooseneck Spout 4" Wristblade Handles Chrome. Faucet has a flow rate of 1.5 GPM, and is made of Chrome-plated Brass material, with a Quarter Turn Ceramic Disc valve. Faucet requires 3 faucet holes.

<b>Mounting Type:</b>	Deck Mount
<b>Special Features:</b>	Low Flow Solid Brass Construction Spout Swing Restriction Pin
<b>Finish:</b>	Chrome (CR)
<b>Handle Type:</b>	4" Wristblade Handle
<b>Deck Clearance:</b>	8-1/2"
<b>Spout Reach:</b>	8"
<b>Spout Height:</b>	14-1/8"
<b>Hole Drillings:</b>	3
<b>Material:</b>	Chrome-plated Brass
<b>Valve Type:</b>	Quarter Turn Ceramic Disc
<b>Valve Connection:</b>	1/2" NPSM Male
<b>Flow Rate:</b>	1.5 GPM
<b>Faucet Hole Size (min):</b>	1-3/8"
<b>Faucet Hole Spread:</b>	8
<b>Spout Type:</b>	Gooseneck



Chrome  
(CR)



### A Century of Tradition and Quality.

For more than 100 years, Elkay has been making innovative products and providing exceptional customer care. We take pride in offering plumbing products that make life easier, inspire change and leave the world a better place.

**Product Compliance:** ADA & ICC A117.1  
ASME A112.18.1/CSA B125.1  
CEC  
NSF 372 (lead free)  
NSF 61 (Q≤1)

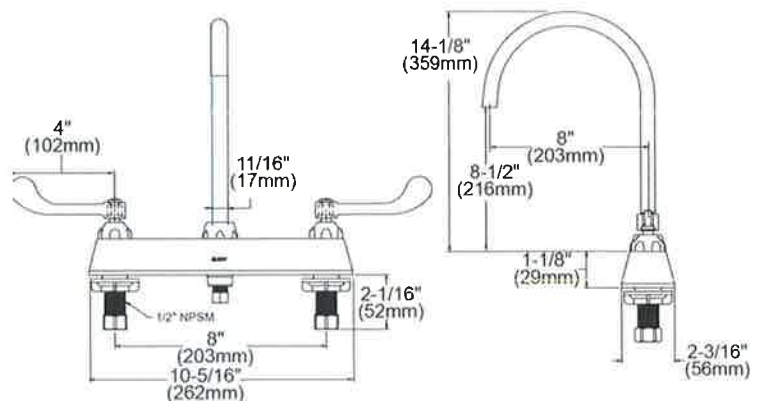


Complies with ADA & ICC A117.1 accessibility requirements when installed according to the requirements outlined in these standards.

[Clean and Care Manual \(PDF\)](#)

[Installation Instructions \(PDF\) - A55483](#)

[Warranty \(PDF\)](#)



PART: \_\_\_\_\_ QTY: \_\_\_\_\_

PROJECT: \_\_\_\_\_

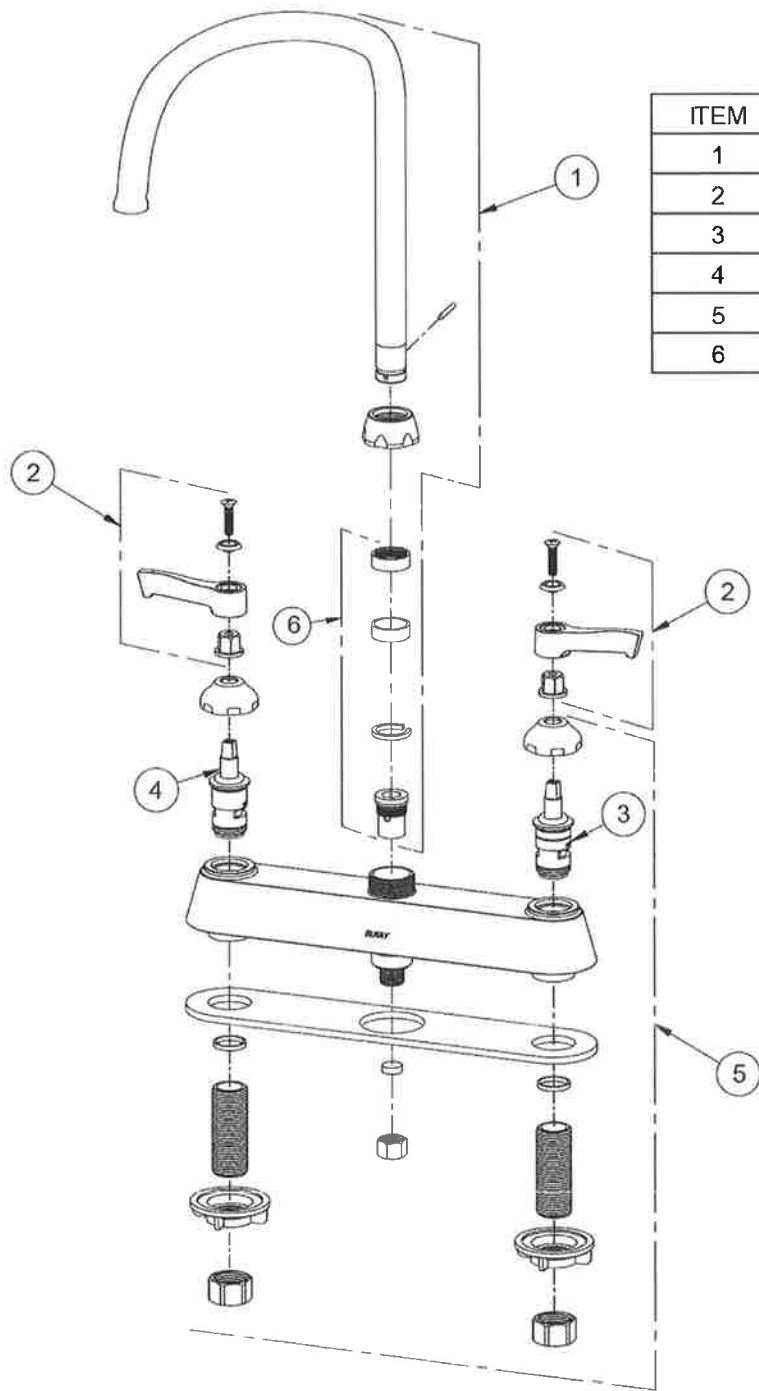
CONTACT: \_\_\_\_\_

DATE: \_\_\_\_\_

NOTES: \_\_\_\_\_

APPROVAL: \_\_\_\_\_

In keeping with our policy of continuing product improvement, Elkay reserves the right to change product specifications without notice. Please visit [elkay.com](http://elkay.com) for the most current version of Elkay product specification sheets. This specification describes an Elkay product with design, quality, and functional benefits to the user. When making a comparison of other producers' offerings, be certain these features are not overlooked.



ITEM	IND. PART	DESCRIPTION
1	1000002620	Spout
2	45919C	Handle, 4"
3	45923C	Right Cold Cartridge
4	45924C	Left Hot Cartridge
5	45914C	Body
6	98554C	Backflow Kit.

In keeping with our policy of continuing product improvement, Elkay reserves the right to change product specifications without notice. Please visit [elkay.com](http://elkay.com) for the most current version of Elkay product specification sheets. This specification describes an Elkay product with design, quality, and functional benefits to the user. When making a comparison of other producers' offerings, be certain these features are not overlooked.





**McGuire Manufacturing Co., Inc.**  
60 Grandview Court  
P.O. Box 746 ♣Cheshire, CT 06410  
203-699-1801 ♣ Fax: 203-699-1813  
www.mcguiremfg.com

## PRODUCT SPECIFICATION

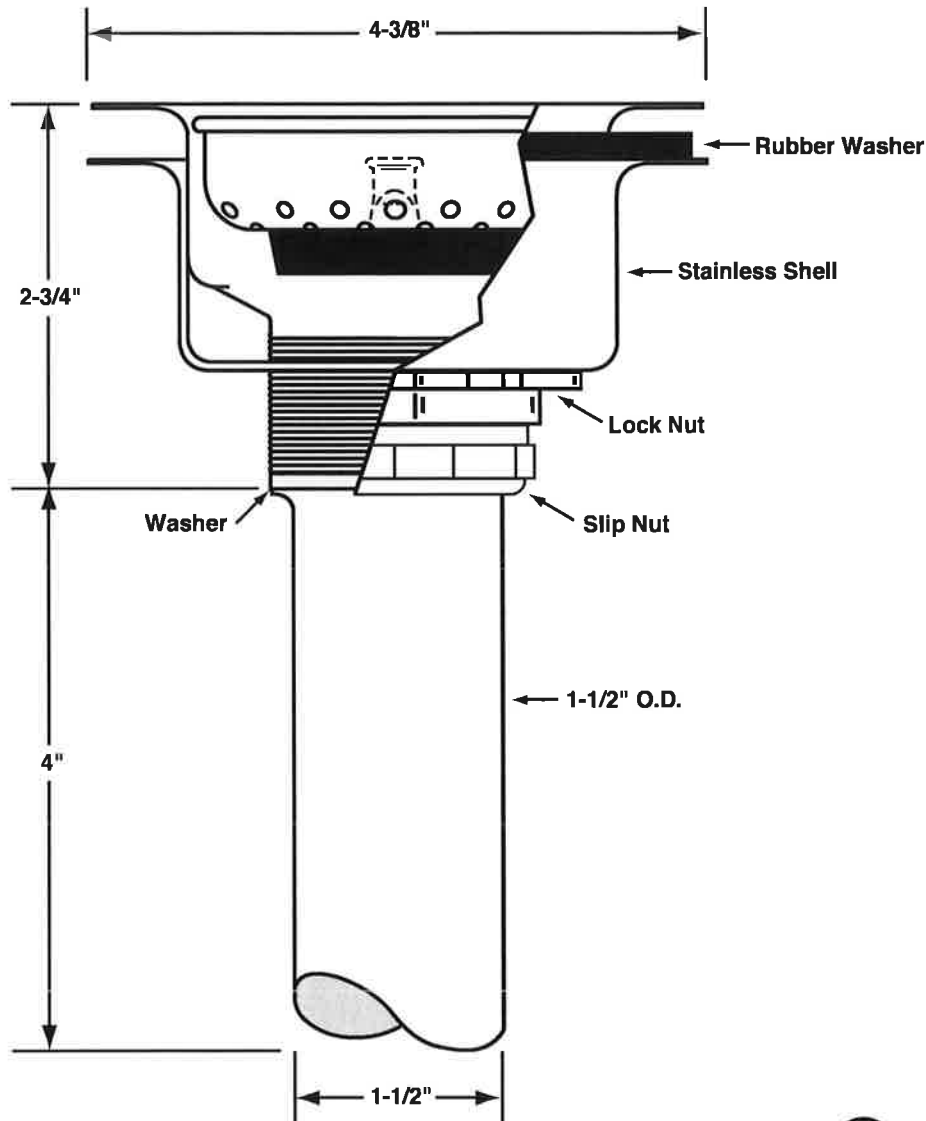
**Part No.**

**151A**

**Stainless Steel  
Basket Strainer**

**Job Name:**

**Submittal Number:**



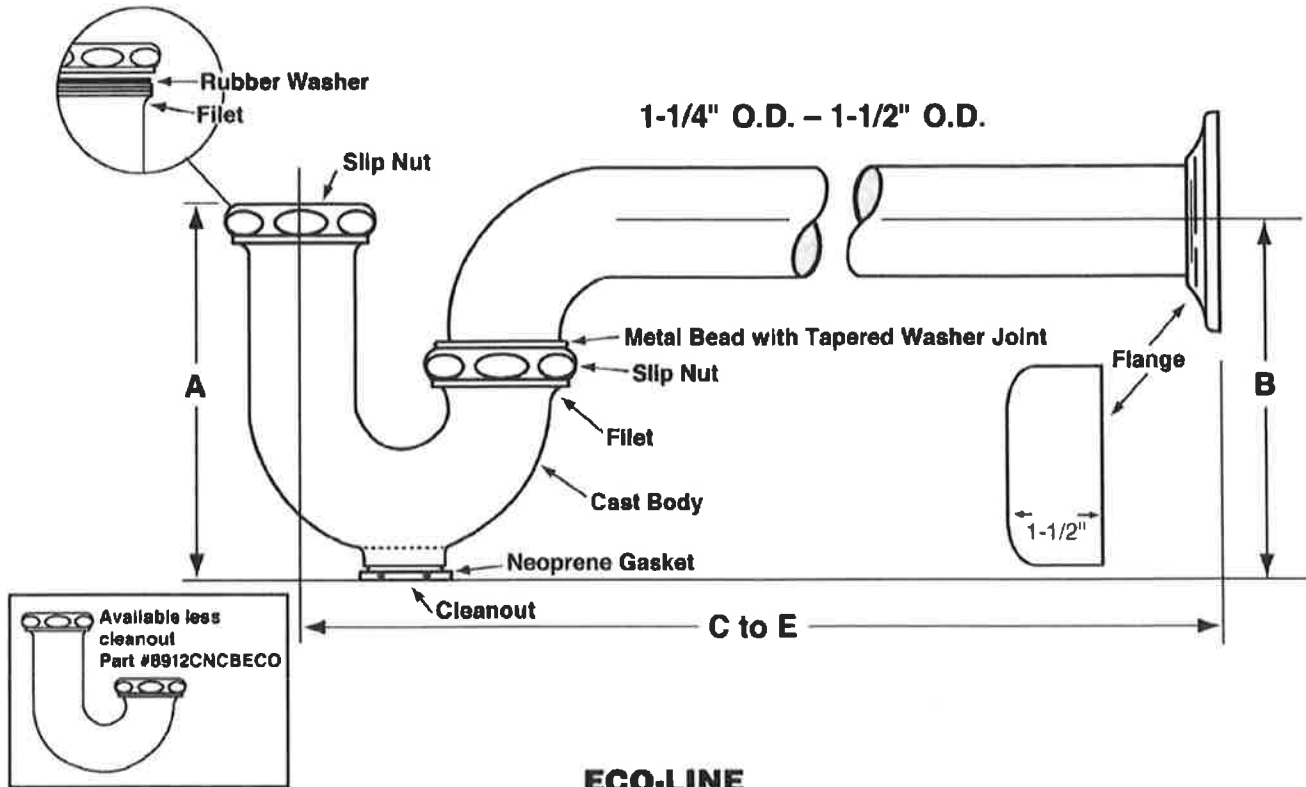
See options and accessories section for details on product variations.

### Specifications:

Heavy Duty Forged Stainless Steel Basket Strainer with 1-1/2" x 4" seamless brass tailpiece, die cast slip and lock nuts. Basket Strainer shall be in compliance with CSA or other recognized testing authority and bear both manufacturer and testing mark.

**McGuire Manufacturing Co., Inc.**

60 Grandview Court  
Cheshire, Connecticut 06410  
(203) 699-1801 Fax (203) 699-1813  
customerservice@mcguiremfg.com mcguiremfg.com

**PRODUCT SPECIFICATION****Part No.****C8912CECO****Cast Body P-Trap With  
or Without Cleanout****Job Name:****Submittal Number:****ECO-LINE****ROUGHING MEASUREMENTS**

MODEL NO.	TRAP DIMENSIONS		A	B	C to E	FLANGE	SLIP NUT
	INLET	OUTLET					
<b>C8912CECO</b>	1-1/2", 1-1/4"	1-1/2"	5"	5"	10-1/2"	Shallow	Zinc

**FED SPEC W.W.P. 541  
CAST BRASS P-TRAP  
MINIMUM SEAL 2"**



ASME A112.18.2/CSA B125.2

**Specifications:**

Chrome plated P-Trap shall be cast brass body, with or without cleanout, with 17 gauge seamless tubular wall bend and flange.

**! WARNING:**

This product can expose you to chemicals including lead, which is known to the State of California to cause cancer, and birth defects or other reproductive harm. For more information go to [www.P65Warnings.ca.gov](http://www.P65Warnings.ca.gov).

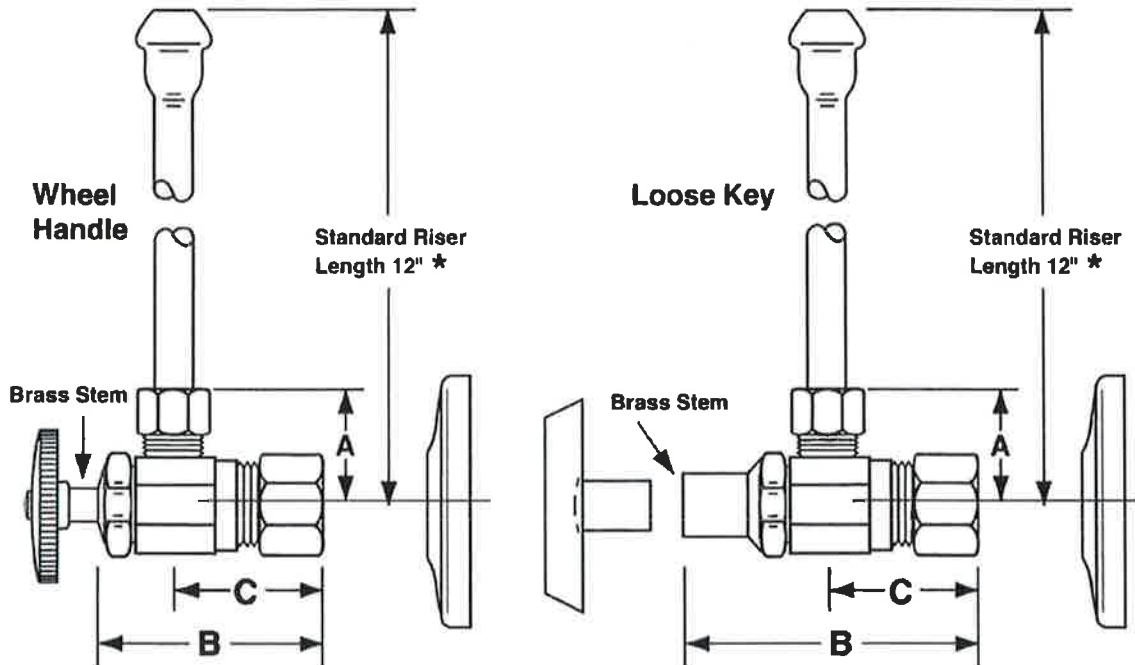
**McGuire Manufacturing Co., Inc.**

60 Grandview Court  
P.O. Box 746 • Cheshire, CT 06410  
203-699-1801 • Fax: 203-699-1813  
www.mcguiremfg.com

**PRODUCT SPECIFICATION****Part No.**

LF2165CC, **LF2165CCLK**,  
LF2167CC, LF2167CCLK

Compression x Compression  
Lavatory Supply

**Job Name:** \_\_\_\_\_**Submittal Number:** \_\_\_\_\_

NO.	DESCRIPTION	ROUGHING MEASUREMENTS		
		A	B	C
LF2165CC	1/2" Nominal x 3/8" O.D.	1"	1-3/4"	1"
<b>LF2165CCLK</b>	1/2" Nominal x 3/8" O.D.	1"	2-3/8"	1"
LF2167CC	1/2" Nominal x 1/2" O.D.	1"	1-3/4"	1-1/4"
LF2167CCLK	1/2" Nominal x 1/2" O.D.	1"	2-3/8"	1-1/4"

**LK** designates Loose Key

\* See options and accessories section for details on product variations.

**Specifications:**

Supply kit shall include low lead chrome plated supply brass stop valves with full turn brass stem, no plastic, (12, 15, 20) inch chrome plated risers and (shallow, deep, bell) (steel, brass) or (forged brass with set screw) flange. Inlet shall be (3/8, 1/2) inch IPS. Outlet shall be (3/8, 1/2) inch (IPS, compression). Supply kit shall be McGuire \_\_\_\_\_. Supply kit shall be low lead certified by recognized authority and bear manufacturer and testing mark.

**P-6B**

### PRODUCT SPECIFICATIONS

Elkay Lustertone<sup>®</sup> Classic Stainless Steel 33" x 21-1/4" x 6-1/2" Equal Double Bowl Drop-in ADA Sink. Sink is manufactured from 18 gauge 304 Stainless Steel with a Lustrous Satin finish, Rear Center drain placement, and Bottom only pads.

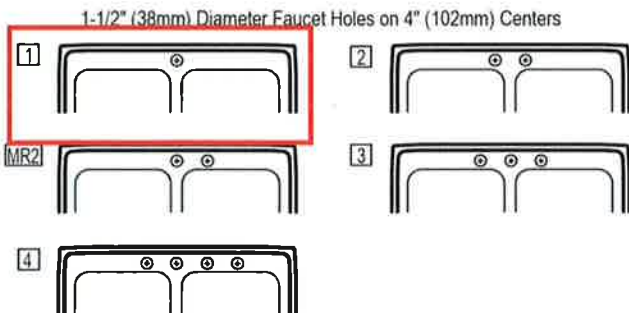
Installation Type:	Drop-in
Material:	304 Stainless Steel
Finish:	Lustrous Satin
Gauge:	18
Sound Deadening:	Bottom only pads
Number of Bowls:	2
Sink Dimensions:	33" x 21-1/4" x 6-1/2"
Bowl 1 Dimensions:	13-1/2" x 16" x 6-3/8"
Bowl 2 Dimensions:	13-1/2" x 16" x 6-3/8"
Drain Size:	3-1/2" (89mm)
Drain Location:	Rear Center
Minimum Cabinet Size:	36"
Mounting Hardware:	Part # 64090014 included for countertops up to 3/4" (19mm) thick
Template Included:	No
Cutout Template #:	1000001288

Template is available for download at [elkay.com](http://elkay.com). CAD software will be required to open the template.

#### Cutout Dimensions for Drop-in Installation:

32-3/8" x 20-5/8" (822mm x 524mm) with 1-1/2" (38mm) corner radius

#### Hole Drilling Configurations:



PART: \_\_\_\_\_ QTY: \_\_\_\_\_

PROJECT: \_\_\_\_\_

CONTACT: \_\_\_\_\_

DATE: \_\_\_\_\_

NOTES: \_\_\_\_\_

APPROVAL: \_\_\_\_\_



A Century of Tradition and Quality. For more than 100 years, Elkay has been making innovative products and providing exceptional customer care. We take pride in offering plumbing products that make life easier, inspire change and leave the world a better place.



**Product Compliance:** ADA & ICC A117.1  
ASME A112.19.3/CSA B45.4



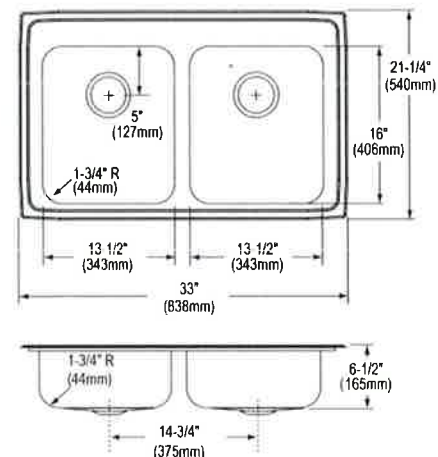
Sinks are listed by IAPMO<sup>®</sup> as meeting the applicable requirements of the Uniform Plumbing Code<sup>®</sup>, International Plumbing Code<sup>®</sup>, and National Plumbing Code of Canada.



Complies with ADA & ICC A117.1 accessibility requirements when installed according to the requirements outlined in these standards.

[Clean and Care Manual \(PDF\)](#)  
[Installation Instructions \(PDF\) - 1000005236](#)  
[Warranty \(PDF\)](#)

**Similar models are available with:** Quick-Clip Mounting System, additional ADA depths



In keeping with our policy of continuing product improvement, Elkay reserves the right to change product specifications without notice. Please visit [elkay.com](http://elkay.com) for the most current version of Elkay product specification sheets. This specification describes an Elkay product with design, quality, and functional benefits to the user. When making a comparison of other producers' offerings, be certain these features are not overlooked.

### PRODUCT SPECIFICATIONS

Elkay Gourmet Single Hole Kitchen Faucet with Pull-down Spray and Forward Only Lever Handle. Faucet has a flow rate of 1.8 GPM, and is made of Brass material, with a Ceramic Disc valve. Faucet requires 1 faucet holes.

<b>Mounting Type:</b>	Deck Mount
<b>Special Features:</b>	Solid Brass Construction
<b>Spray Type:</b>	Pull Down
<b>Finish:</b>	Chrome (CR), Lustrous Steel (LS)
<b>Handle Type:</b>	Forward Only Lever Handle
<b>Deck Clearance:</b>	8-3/4"
<b>Spout Reach:</b>	8-9/16"
<b>Spout Height:</b>	15-9/16"
<b>Hole Drillings:</b>	1
<b>Material:</b>	Brass
<b>Valve Type:</b>	Ceramic Disc
<b>Valve Connection:</b>	3/8" Female Compression Hose Assembly
<b>Flow Rate:</b>	1.8 GPM
<b>Faucet Hole Size (min):</b>	1-1/2"
<b>Countertop Thickness:</b>	3
<b>Spout Swing Rotation:</b>	360°
<b>Spout Type:</b>	Pull-down Spray
<b>Spray Functions:</b>	Aerated, Nylon Hand Spray Hose, Spray

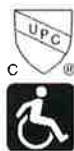


**Included with Product:** Optional Deck Plate/Escutcheon included

A Century of Tradition and Quality.

For more than 100 years, Elkay has been making innovative products and providing exceptional customer care. We take pride in offering plumbing products that make life easier, inspire change and leave the world a better place.

**Product Compliance:** ADA & ICC A117.1  
ASME A112.18.1/CSA B125.1  
CEC  
NSF 372 (lead free)  
NSF 61 (Q≤1)

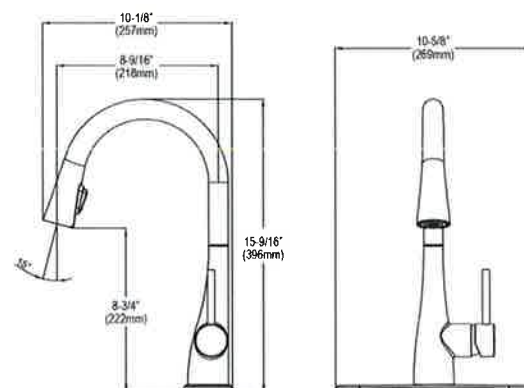


Complies with ADA & ICC A117.1 accessibility requirements when installed according to the requirements outlined in these standards.

[Clean and Care Manual \(PDF\)](#)

[Installation Instructions \(PDF\) - LKGT4083 - Install Sheet](#)

[Warranty \(PDF\)](#)



PART: \_\_\_\_\_ QTY: \_\_\_\_\_

PROJECT: \_\_\_\_\_

CONTACT: \_\_\_\_\_



DATE: \_\_\_\_\_

NOTES: \_\_\_\_\_

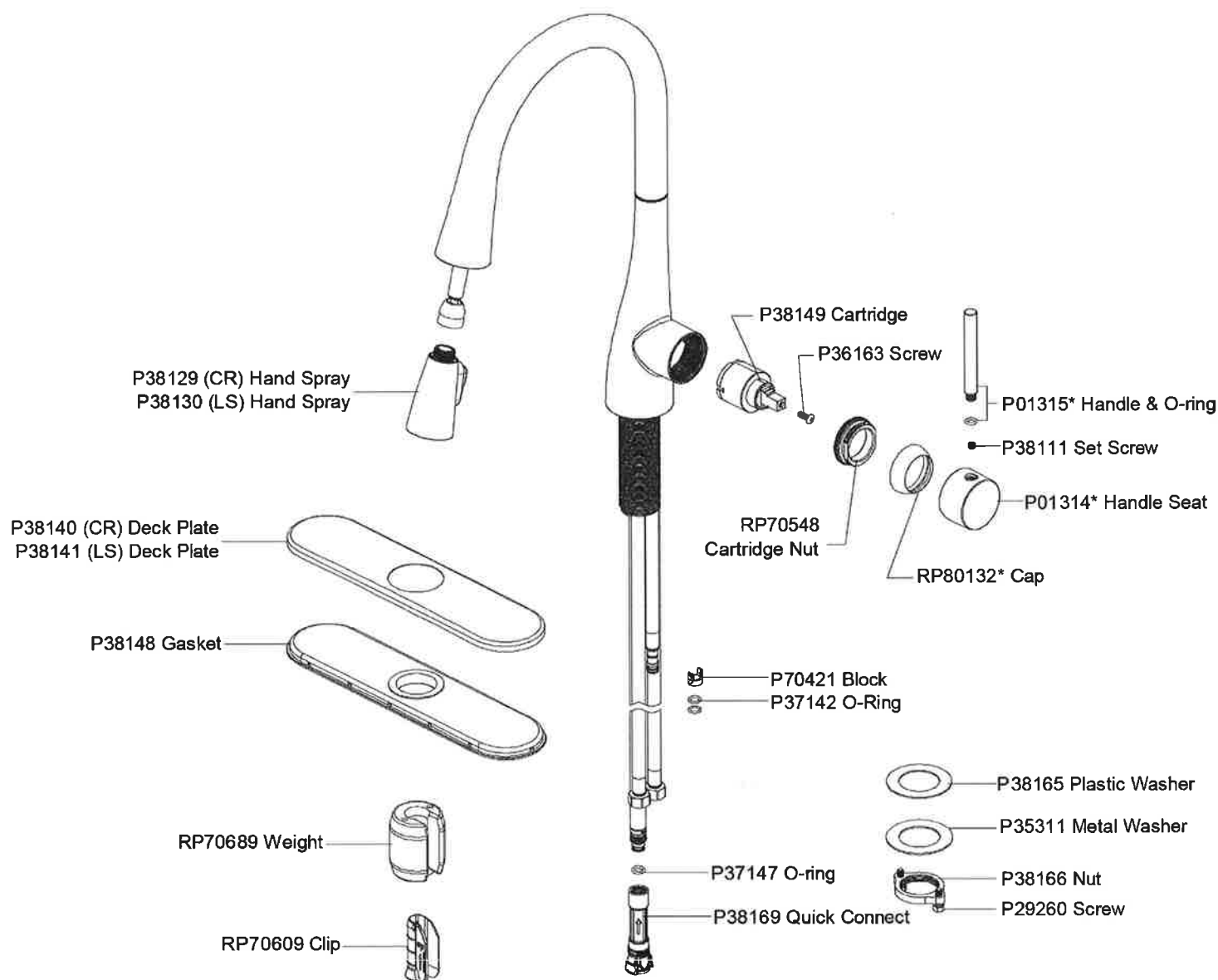
APPROVAL: \_\_\_\_\_

In keeping with our policy of continuing product improvement, Elkay reserves the right to change product specifications without notice. Please visit [elkay.com](http://elkay.com) for the most current version of Elkay product specification sheets. This specification describes an Elkay product with design, quality, and functional benefits to the user. When making a comparison of other producers' offerings, be certain these features are not overlooked.



Optional Accessories		
<a href="#">LK134</a>	Elkay 3-Hole Deck Plate/Escutcheon <a href="#">Spec Sheet (PDF)</a>	
<a href="#">LK321</a>	Elkay 1-15/16" x 2-5/8" x 2-5/8" Soap / Lotion Dispenser <a href="#">Spec Sheet (PDF)</a>	

*In keeping with our policy of continuing product improvement, Elkay reserves the right to change product specifications without notice. Please visit [elkay.com](#) for the most current version of Elkay product specification sheets. This specification describes an Elkay product with design, quality, and functional benefits to the user. When making a comparison of other producers' offerings, be certain these features are not overlooked.*



In keeping with our policy of continuing product improvement, Elkay reserves the right to change product specifications without notice. Please visit [elkay.com](http://elkay.com) for the most current version of Elkay product specification sheets. This specification describes an Elkay product with design, quality, and functional benefits to the user. When making a comparison of other producers' offerings, be certain these features are not overlooked.



**McGuire Manufacturing Co., Inc.**  
60 Grandview Court  
P.O. Box 746 ♣Cheshire, CT 06410  
203-699-1801 ♣ Fax: 203-699-1813  
www.mcguiremfg.com

## PRODUCT SPECIFICATION

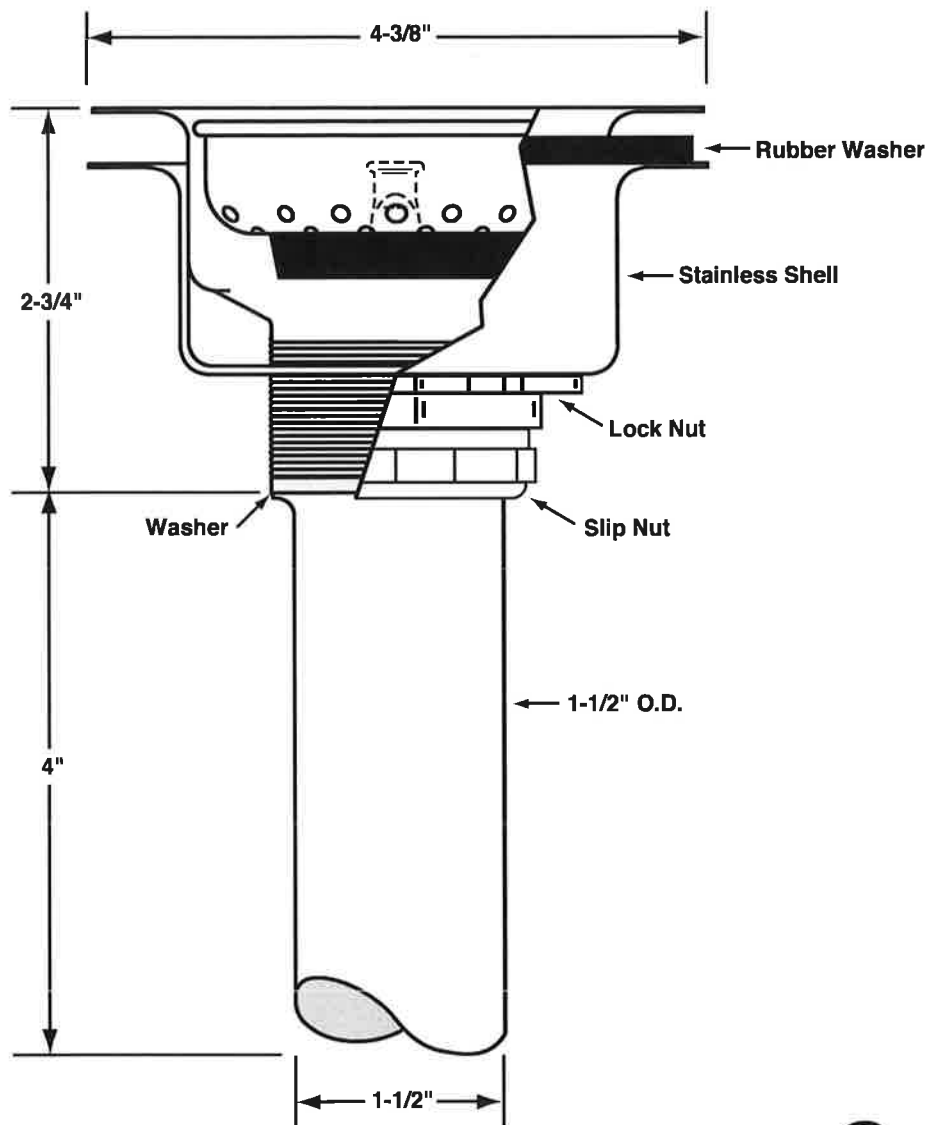
**Part No.**

**151A**

**Stainless Steel  
Basket Strainer**

**Job Name:**

**Submittal Number:**



See options and accessories section for details on product variations.

### Specifications:

Heavy Duty Forged Stainless Steel Basket Strainer with 1-1/2" x 4" seamless brass tailpiece, die cast slip and lock nuts. Basket Strainer shall be in compliance with CSA or other recognized testing authority and bear both manufacturer and testing mark.



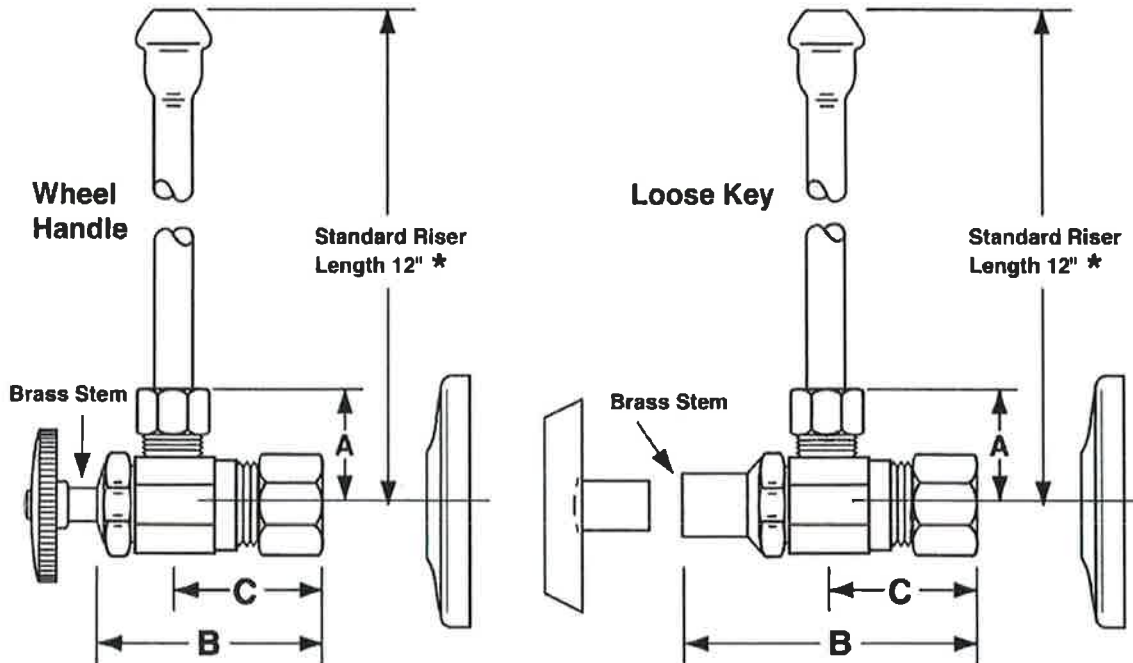
**McGuire Manufacturing Co., Inc.**

60 Grandview Court  
P.O. Box 746 • Cheshire, CT 06410  
203-699-1801 • Fax: 203-699-1813  
www.mcguiremfg.com

**PRODUCT SPECIFICATION****Part No.**

LF2165CC, **LF2165CCLK**,  
LF2167CC, LF2167CCLK

Compression x Compression  
Lavatory Supply

**Job Name:** \_\_\_\_\_**Submittal Number:** \_\_\_\_\_

NO.	DESCRIPTION	ROUGHING MEASUREMENTS		
		A	B	C
LF2165CC	1/2" Nominal x 3/8" O.D.	1"	1-3/4"	1"
<b>LF2165CCLK</b>	1/2" Nominal x 3/8" O.D.	1"	2-3/8"	1"
LF2167CC	1/2" Nominal x 1/2" O.D.	1"	1-3/4"	1-1/4"
LF2167CCLK	1/2" Nominal x 1/2" O.D.	1"	2-3/8"	1-1/4"

**LK** designates Loose Key

\* See options and accessories section for details on product variations.

**Specifications:**

Supply kit shall include low lead chrome plated supply brass stop valves with full turn brass stem, no plastic, (12, 15, 20) inch chrome plated risers and (shallow, deep, bell) (steel, brass) or (forged brass with set screw) flange. Inlet shall be (3/8, 1/2) inch IPS. Outlet shall be (3/8, 1/2) inch (IPS, compression). Supply kit shall be McGuire \_\_\_\_\_. Supply kit shall be low lead certified by recognized authority and bear manufacturer and testing mark.

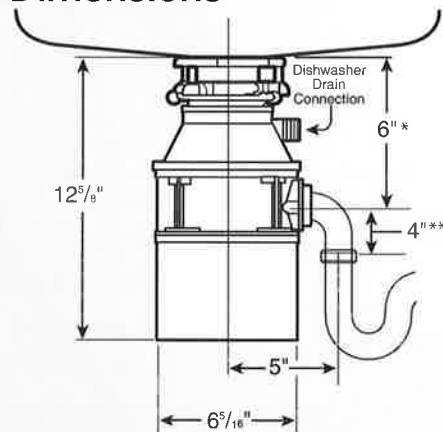
**P-7**



# Food Waste Disposers



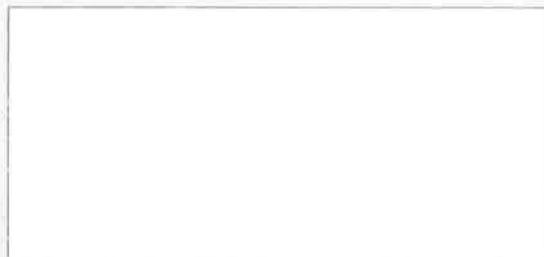
## Dimensions



\* Distance from bottom of sink to center line of disposer outlet.  
Add 1/2" when stainless steel sinks are used.

\*\* Length of tailpipe from center line of disposer outlet to end of tailpipe.  
NOTE: Plumb waste line to prevent standing water in disposer motor housing.

## Job Specifications



## Submittal Sheet

This popular model offers the following features and benefits:

- 1/2 Horsepower Heavy Duty Motor (Quiet Dura-Drive® Induction Motor)
- 2-Year We Come To You™ In-Home Parts And Labor Service Warranty
- Rugged Galvanized Steel Construction (For Disposer Durability)
- Space-Saving Compact Design

## Sample Specification

Food Waste Disposer(s) shall be InSinkErator Badger 5, continuous feed, with 1/2 H.P. motor, galvanized steel grinding elements with two stainless steel 360° swivel lugs. Self-service wrench.

**Warranty:**  
2-Year parts and in-home service.

\* The complete InSinkErator warranty is included in the Care & Use Booklet packed with each unit.

## Specifications

Type of Feed	Continuous
On/Off Control	Wall Switch
Motor	Single Phase
HP	1/2
Volts	120
HZ	60
RPM	1725
Amp. (Avg. Load)	6.9
Time Rating	Intermittent
Lubrication	Permanently Lubricated Upper & Lower Bearings
Shipping Weight (Approx.)	14 lbs. 11 oz.
Unit Finish	Waterborne Grey Enamel
Overall Height	12-5/8"
Grind Chamber Capacity	26 oz.
Motor Protection	Manual Reset Overload
Average Water Usage	1/4 Gallon per Person Per Day
Average Electrical Usage	1/2 KWH per Month
Drain Connection	1-1/2" Cushioned Slip Joint
Dishwasher Drain Connection	Yes



1-800-558-5700  
www.insinkerator.com

Printed in USA



The Emerson logo is a trademark and service mark of Emerson Electric Co.

InSinkErator may make improvements and/or changes in the specifications at any time, in its sole discretion, without notice or obligation and further reserves the right to change or discontinue models.

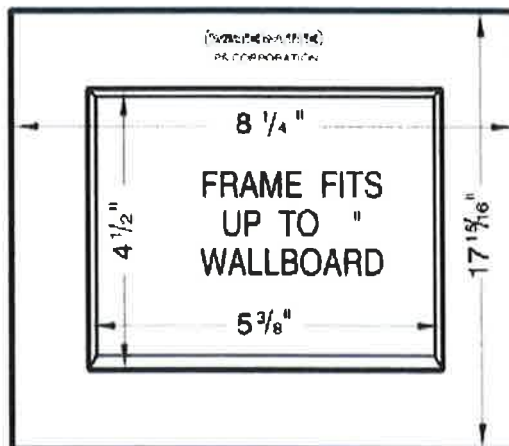
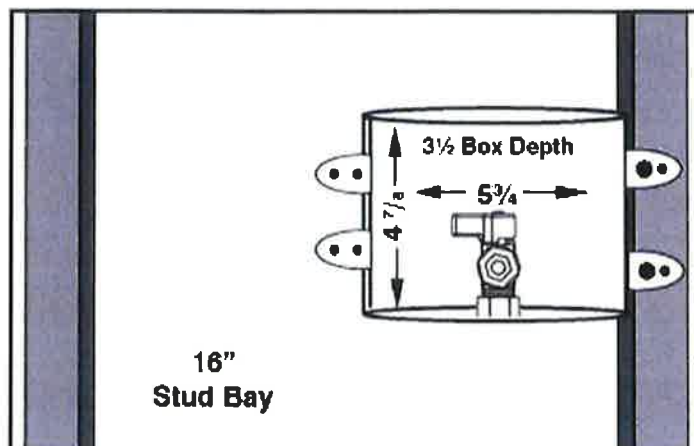
© 2007 InSinkErator. InSinkErator is a division of Emerson Electric Co. All Rights Reserved.

**P-8**

## SPECIFICATION SUBMITTAL SHEET



### PLASTIC ICE MAKER OUTLET BOXES with Lead Free Quarter Turn Valve



#### Specifications:

Furnish and install ice maker outlet box with lead free quarter turn valve. Unit shall be Water-Tite product code as manufactured by IPS Corporation.

Item #	Product Description	Model #	Quantity
87967	Brass Qtr Turn Lead Free Valve* Installed - 1/2" Sweat Conx.	AB9700	10
87971	Brass Qtr Turn Lead Free Valve* Installed - 1/2" CPVC Conx.	AB9701	10
87969	Brass Qtr Turn Lead Free Valve* Installed - 1/2" PEX Conx.	AB9702	10
87954	Brass Qtr Turn Lead Free Valve* Installed - 3/8" PEX Conx.	AB9738	10
87973	Brass Qtr Turn Lead Free Valve* Installed - 1/2" Wirsbo® Conx.	AB9711	10
88017	Domestic Adapter Lead Free Valve Installed - 1/2" Sweat Conx.	AB9000 A	10
88008	Ice Maker Box Only - No Valves	9000 LV	10
<b>Contractor Pack</b>			
87968	Brass Qtr Turn Lead Free Valve* Installed - 1/2" Sweat Conx.	AB9700 CP	20
87972	Brass Qtr Turn Lead Free Valve* Installed - 1/2" CPVC Conx.	AB9701 CP	20
87970	Brass Qtr Turn Lead Free Valve* Installed - 1/2" PEX Conx.	AB9702 CP	20
87955	Brass Qtr Turn Lead Free Valve* Installed - 3/8" PEX Conx.	AB9738 CP	20
87974	Brass Qtr Turn Valve* Installed - 1/2" Wirsbo® Conx.	AB9711 CP	20
87953	Brass Qtr Turn Valve Installed - 1/2" Viega PF C3onx - Contractor Pack	AB9722 CP	20
<b>Display Pack</b>			
82100	Ice Maker Box Only - No Valves	R9000LVB	10
88182	Brass Qtr Turn Lead Free Valve* Installed - 1/2" Sweat Conx.	RAB9000B	10



500 Distribution Parkway, Collierville, TN 38017, USA

TEL: 800-888-8312

Fax: 901-853-5008

www.ipscorp.com

AB9700

**FD**

## Engineering Specification

Job Name Stone Bank  
 Job Location LR  
 Engineer Batson  
 Approval \_\_\_\_\_  
 Tag FD

Contractor Comfort Systems USA  
 Approval \_\_\_\_\_  
 Contractor's P.O. No. \_\_\_\_\_  
 Representative Sanders Supply

### FD-100-A

### Floor Drain with Round Strainer

#### Specification

Watts FD-100-A epoxy coated cast iron floor drain with anchor flange, reversible clamping collar with primary and secondary weepholes, adjustable round heel proof nickel bronze strainer, and no hub (standard) outlet.



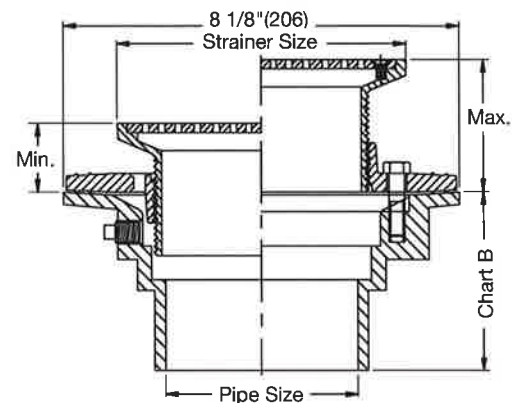
Pipe Sizing		
Suffix	Description	
2	2"(51) Pipe Size	<input type="checkbox"/>
3	3"(76) Pipe Size	<input type="checkbox"/>
4	4"(102) Pipe Size	<input type="checkbox"/>
6	6"(152) Pipe Size (NH Only)	<input type="checkbox"/>

Outlet Type		
Suffix	Description	
NH	No Hub (M.I.)	<input type="checkbox"/>
P	Push On	<input checked="" type="checkbox"/>
T	Threaded Outlet	<input type="checkbox"/>
X	Inside Caulk	<input type="checkbox"/>

Strainer		
Suffix	Description	
A5	5"(127) Dia., Nickel Bronze	<input checked="" type="checkbox"/>
A6	6"(152) Dia., Nickel Bronze	<input type="checkbox"/>
A7	7"(178) Dia., Nickel Bronze	<input type="checkbox"/>
A8	8"(203) Dia., Nickel Bronze	<input type="checkbox"/>
A10	10"(254) Dia., Nickel Bronze	<input type="checkbox"/>

Options		
Suffix	Description	
-5	Sediment Bucket	<input type="checkbox"/>
-6	Vandal Proof	<input type="checkbox"/>
-7	Trap Primer Tapping	<input checked="" type="checkbox"/>
-8	Backwater Valve (2, 3, 4" Only)	<input type="checkbox"/>
-13	Galvanized Body	<input type="checkbox"/>
-15	Strainer Extension (DD-50)	<input type="checkbox"/>
-F4-50	4" Round Cast Iron Funnel	<input type="checkbox"/>
-F4-1	4" Round Nickel Bronze Funnel	<input type="checkbox"/>
-F6-1	6" Round Nickel Bronze Funnel	<input type="checkbox"/>
-G-50	4x9" Oval Cast Iron Funnel	<input type="checkbox"/>
-G-1	4x9" Oval Nickel Bronze Funnel	<input type="checkbox"/>
-S0	Side Outlet	<input type="checkbox"/>

Optional Body Material		
Suffix	Description	
-60	PVC Body w/Socket Outlet (2, 3, 4" Only)	<input type="checkbox"/>
-61	ABS Body w/Socket Outlet (2, 3, 4" Only)	<input type="checkbox"/>



Strainer Size				
Str. Dia.	Min.	Max.	Load Rating	Free Area Sq. In.
5"(127)	13/16"(21)	3 1/4"(83)	*MD	8
6"(152)	7/8"(22)	3 3/8"(86)	*MD	9
7"(178)	1 1/16"(17)	3 1/4"(83)	*MD	12
8"(203)	7/8"(22)	3 1/4"(83)	*MD	18
10"(254)	1 1/4"(32)	3 1/4"(83)	*MD	28

#### NOTICE

The information contained herein is not intended to replace the full product installation and safety information available or the experience of a trained product installer. You are required to thoroughly read all installation instructions and product safety information before beginning the installation of this product.

Watts product specifications in U.S. customary units and metric are approximate and are provided for reference only. For precise measurements, please contact Watts Technical Service. Watts reserves the right to change or modify product design, construction, specifications, or materials without prior notice and without incurring any obligation to make such changes and modifications on Watts products previously or subsequently sold.

Chart B					
Pipe Size	Std. No Hub	P Push On	T Female Thread	X Inside Caulk	60/61 PVC/ABS
2"(52)	3 5/8"(92)	4 1/4"(108)	4 1/4"(108)	4 1/2"(114)	4"(102)
3"(76)	3 5/8"(92)	4 1/4"(108)	4 1/4"(108)	4 1/2"(114)	4"(102)
4"(102)	3 5/8"(92)	4 1/4"(108)	4 1/4"(108)	4 1/2"(114)	4"(102)
6"(152)	3 1/2"(89)				



USA: T: (800) 338-2581 • Watts.com  
 Canada: T: (888) 208-8927 • Watts.ca  
 Latin America: T: (52) 55-4122-0138 • Watts.com

Location: FD

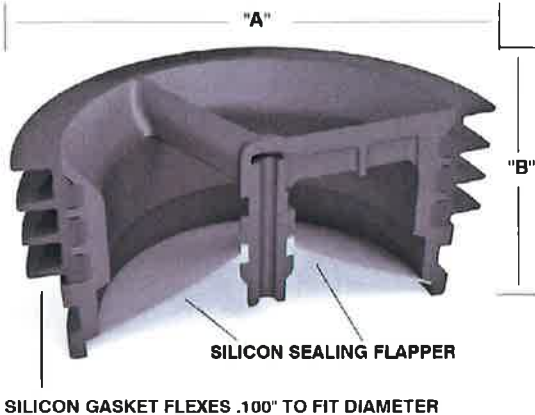


**MI-GARD®**

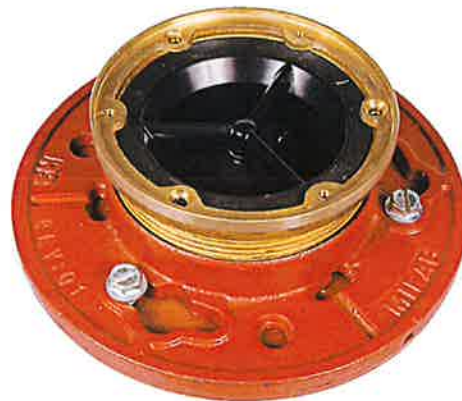
**FLOOR DRAIN TRAP SEAL**

**Specification:** MIFAB® MI-GARD® Series inline floor drain trap seal with UV resistant ABS plastic frame, silicon rubber sealing flapper and four flexible sealing ribs. Tested and certified to the ASSE 1072 Standard and listed with IAPMO and I.P.C. Specify connection size (1 1/2", 2", 3", 3 1/2", 4" or 6"). 10 year warranty is included.

**Function:** Used in the outlet connections of floor drain bodies, or the inside of floor drain strainers to seal the opening to prevent odors, sewer gases, and insects from entering up through the floor drain grate. The MI-GARD®'s four flexible silicone sealing ribs ensure easy installation into openings that have variations in size. The MI-GARD® will open to allow drainage and close when there is no water flow.



**BOTTOM OF BODY**



**TOP OF STRAINER**

MODEL NO.	"A" (PIPE SIZE)	"B" (HEIGHT)
<input type="radio"/> MI-GARD-1.5	1-1/2" (38)	2" (51)
<input type="radio"/> MI-GARD-2	2" (51)	2" (51)
<input type="radio"/> MI-GARD-3	3" (76)	2" (51)
<input type="radio"/> MI-GARD-3.5	3 1/2" (89)	2" (51)
<input type="radio"/> MI-GARD-4	4" (102)	2" (51)
<input type="radio"/> MI-GARD-6	6" (152)	2" (51)

MI-GARD® prevents the following from entering through the top of floor drains:

- Odors and sewer gases
- Insects

Not intended to be used in lieu of a trap seal primer. 6" MI-GARD not IAPMO certified. Note:

The MI-GARD-6 is designed in accordance with industry standards but is not listed. MI-GARD

Floor Drain Trap Seals are in compliance with International Plumbing Code (I.P.C.)



MI-GARD-1.5

CALIFORNIA PROPOSITION 65 WARNING. This product contains chemicals known to the State of California to cause cancer and birth defects or other reproductive harm.

Job Name: Stone Bank

Page No: \_\_\_\_\_

Section No: \_\_\_\_\_

Contractor: Comfort Systems USA

Schedule No: \_\_\_\_\_

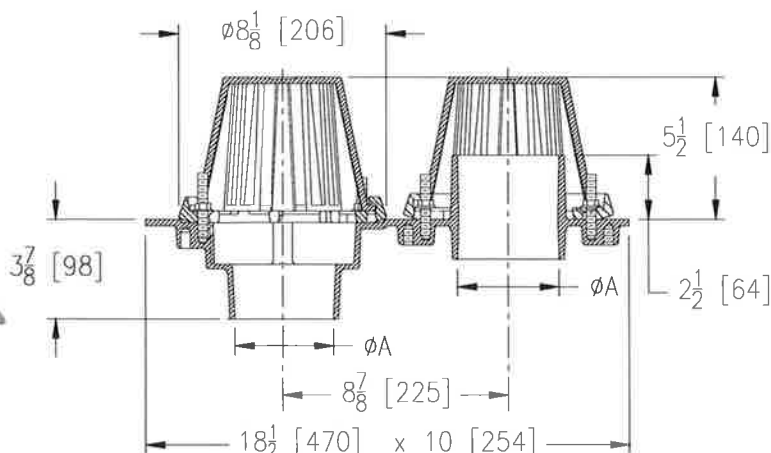
Purchase Order No: \_\_\_\_\_



**RD/OD**

**RD2130****COMBINATION ROOF DRAIN AND OVERFLOW****SPECIFICATION SHEET****TAG RD/OD**

Dimensional Data (inches and [ mm ]) are Subject to Manufacturing Tolerances and Change Without Notice



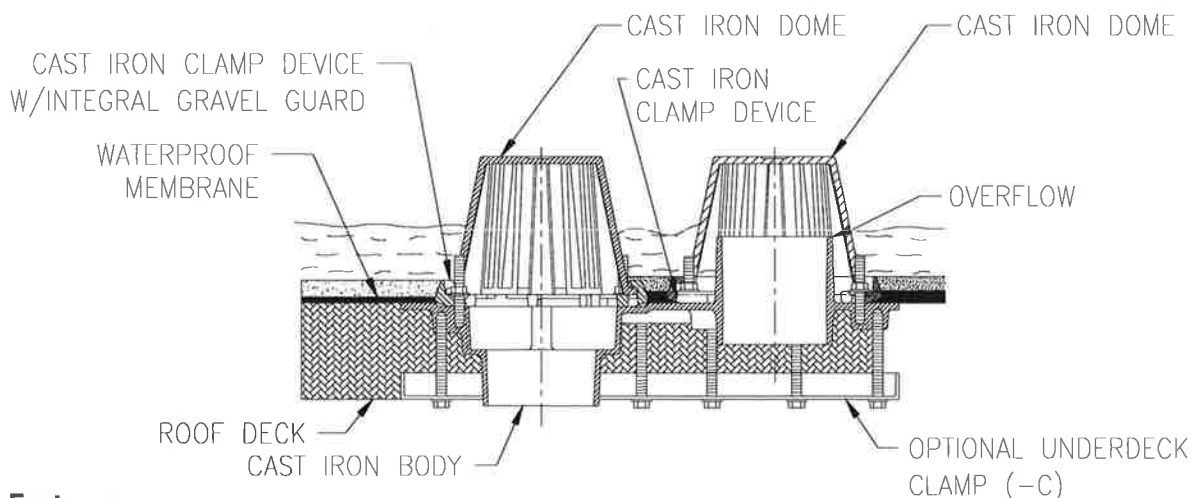
Product	'A' Connections	Dome Open Area Sq. In. [cm <sup>2</sup> ]
RD2130-NH2	2 [51] No-Hub	82 [529]
RD2130-NH3	3 [76] No-Hub	
RD2130-NH4	4 [102] No-Hub	

**RD2130 Combination Roof Drain and Overflow**

Constructed of a Dura-Coated cast iron body. Standard to the roof drain is a cast iron clamp device with an integral gravel guard, roof sump receiver, and cast iron dome strainer.

**Options:**

—C	Underdeck Clamp
—VP	Vandal-Proof Screws for Dome

**Typical Installation****Features**

- This unique drain offers connections for an overflow drain pipe to protect the roof from overflow conditions.
- Integral roof sump receiver.
- Cast iron clamp device is provided to ensure strength and stability necessary for a water-tight seal.

\* Regularly furnished unless otherwise specified.

**DC**

## Engineering Specification

Job Name **Stone Bank**  
 Job Location **LR**  
 Engineer **Batson**  
 Approval \_\_\_\_\_

Contractor **Comfort Systems USA**  
 Approval \_\_\_\_\_  
 Contractor's P.O. No. \_\_\_\_\_  
 Representative **Sanders Supply**

## RD-950

### Stainless Steel Downspout Cover Specification

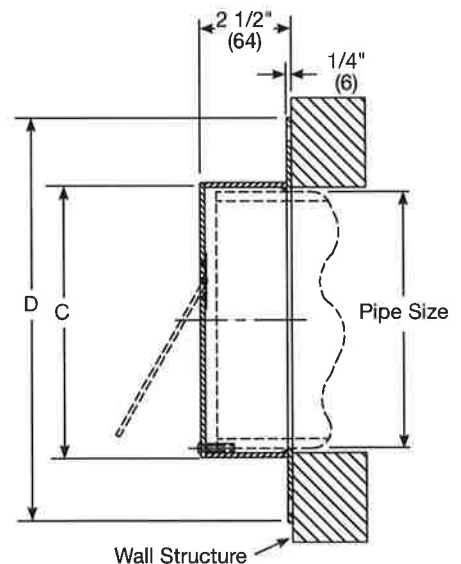
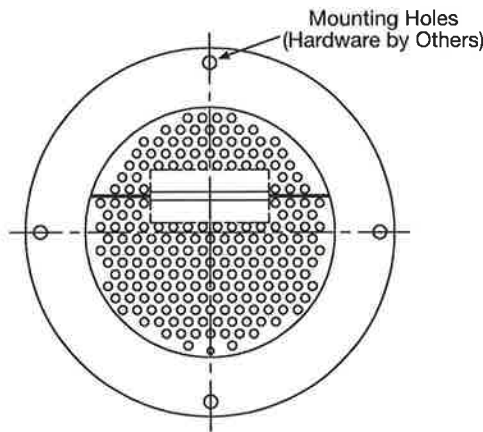
Watts RD-950 stainless steel downspout cover with securing flange, and secured perforated hinged cover.



Call customer service if you need assistance with technical details.

Pipe Sizing		
Suffix	Description	
3	3"(76) Pipe Size	<input type="checkbox"/>
4	4"(102) Pipe Size	<input type="checkbox"/>
6	6"(152) Pipe Size	<input type="checkbox"/>
8	8"(203) Pipe Size	<input type="checkbox"/>
10	10"(254) Pipe Size	<input type="checkbox"/>
12	12"(305) Pipe Size	<input type="checkbox"/>

Options		
Suffix	Description	
-6	Vandal Proof	<input type="checkbox"/>



### NOTICE

The information contained herein is not intended to replace the full product installation and safety information available or the experience of a trained product installer. You are required to thoroughly read all installation instructions and product safety information before beginning the installation of this product.

Pipe Size	C	D	Free Area Sq. In.
3"(76)	4 1/4"(108)	7 3/4"(197)	1"(25)
4"(102)	5 1/4"(133)	8 3/4"(222)	2"(51)
6"(152)	7 3/8"(187)	10 7/8"(276)	3"(76)
8"(203)	9 3/8"(238)	12 7/8"(327)	10"(254)
10"(254)	11 1/2"(292)	15"(381)	18"(457)
12"(305)	13 1/2"(343)	17"(432)	26"(660)

Watts product specifications in U.S. customary units and metric are approximate and are provided for reference only. For precise measurements, please contact Watts Technical Service. Watts reserves the right to change or modify product design, construction, specifications, or materials without prior notice and without incurring any obligation to make such changes and modifications on Watts products previously or subsequently sold.



USA: T: (800) 338-2581 • Watts.com  
 Canada: T: (888) 208-8927 • Watts.ca  
 Latin America: T: (52) 55-4122-0138 • Watts.com

**WCO**

## Engineering Specification

Job Name Stone Bank  
 Job Location LR  
 Engineer Batson  
 Approval \_\_\_\_\_

Contractor Comfort Systems USA  
 Approval \_\_\_\_\_  
 Contractor's P.O. No. \_\_\_\_\_  
 Representative Sanders Supply

### CO-380-RD

#### Wall Cleanout with Brass Plug and Stainless Steel Cover Specification

Watts CO-380-RD cast iron wall cleanout with gasketed brass countersunk plug, stainless steel access cover, vandal proof stainless steel screw, and no hub connection.

Call customer service if you need assistance with technical details.

Pipe Size	Cover Size	
2"(51)	5"(127)	<input type="checkbox"/>
3"(76)	7"(178)	<input type="checkbox"/>
4"(102)	7"(178)	<input type="checkbox"/>
6"(152)	8"(203)	<input type="checkbox"/>

#### Load Rating

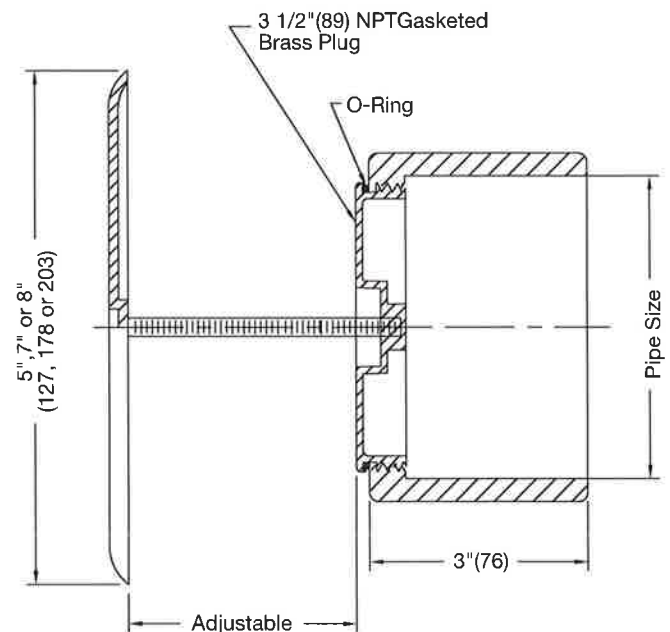
MD

#### NOTICE

The load classifications are in accordance with the American National Standards ASME A112.21.1M ASME Ratings are as follows:  
 MD - Safe Live Load 2000-4999 lbs. (900-2250 kg)  
 The above categories are given as a guide only.  
 Please consult factory.

#### NOTICE

The information contained herein is not intended to replace the full product installation and safety information available or the experience of a trained product installer. You are required to thoroughly read all installation instructions and product safety information before beginning the installation of this product.



Watts product specifications in U.S. customary units and metric are approximate and are provided for reference only. For precise measurements, please contact Watts Technical Service. Watts reserves the right to change or modify product design, construction, specifications, or materials without prior notice and without incurring any obligation to make such changes and modifications on Watts products previously or subsequently sold.



USA: T: (800) 338-2581 • Watts.com

Canada: T: (888) 208-8927 • Watts.ca

Latin America: T: (52) 55-4122-0138 • Watts.com

ES-WD-CO-380-RD 2407

© 2024 Watts



**FCO**

**Engineering Specification**

Job Name Stone Bank  
 Job Location LR  
 Engineer Batson  
 Approval \_\_\_\_\_

Contractor Comfort Systems USA  
 Approval \_\_\_\_\_  
 Contractor's P.O. No. \_\_\_\_\_  
 Representative Sanders Supply

**CO-200-R****Floor Cleanout With Round Top Specification**

Watts CO-200-R epoxy coated cast iron floor cleanout with 5"(127) round adjustable gasketed nickel bronze top, removable gas tight gasketed brass cleanout plug, and no hub (standard) outlet.

Call customer service if you need assistance with technical details.

Pipe Sizing		
Suffix	Description	
2	2"(51) Pipe Size	<input type="checkbox"/>
3	3"(76) Pipe Size	<input checked="" type="checkbox"/>
4	4"(102) Pipe Size	<input type="checkbox"/>

Outlet Type		
Suffix	Description	
NH	No Hub (M.J.)	<input type="checkbox"/>
P	Push On	<input checked="" type="checkbox"/>
X	Inside Caulk	<input type="checkbox"/>

Options		
Suffix	Description	
-C	Membrane Clamp	<input type="checkbox"/>
-6	Vandal Proof	<input type="checkbox"/>
-13	Galvanized Body	<input type="checkbox"/>
-CF	Carpet Clamping Flange	<input type="checkbox"/>
-SO	Side Outlet	<input type="checkbox"/>

Optional Body Material		
Suffix	Description	
-60	PVC Body w/Poly Plug	<input type="checkbox"/>
-61	ABS Body w/Poly Plug	<input type="checkbox"/>

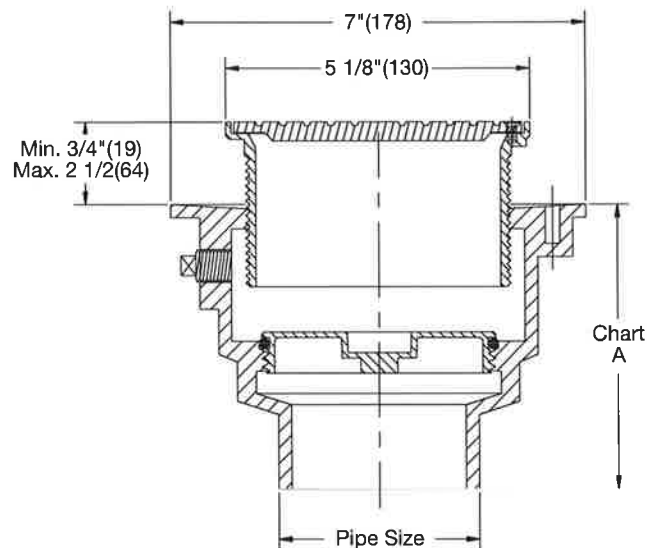
**Load Rating**

MD

**NOTICE**

The information contained herein is not intended to replace the full product installation and safety information available or the experience of a trained product installer. You are required to thoroughly read all installation instructions and product safety information before beginning the installation of this product.

Watts product specifications in U.S. customary units and metric are approximate and are provided for reference only. For precise measurements, please contact Watts Technical Service. Watts reserves the right to change or modify product design, construction, specifications, or materials without prior notice and without incurring any obligation to make such changes and modifications on Watts products previously or subsequently sold.

**Chart A**

Pipe Size	NH	Push On	PVC/ABS
2"(51)	4 3/4"(121)	5 1/2"(140)	4"(102)
3"(76)	4 3/4"(121)	5 1/2"(140)	4"(102)
4"(102)	4 3/4"(121)	5 1/2"(140)	4"(102)

**NOTICE**

The load classifications are in accordance with the American National Standards ASME A112.36.2M-91(R2012) ASME Ratings are as follows:

MD - Safe Live Load 2000-4999 lbs. (900-2250 kg)

The above categories are given as a guide only.

Please consult factory.



USA: T: (800) 338-2581 • Watts.com

Canada: T: (888) 208-8927 • Watts.ca

Latin America: T: (52) 55-4122-0138 • Watts.com

ES-WD-CO-200-R 2404

© 2024 Watts