



11/13/2023

HVAC SUBMITTAL REVIEW COMMENTS

#21068: Southside HS JR Additions

General Contractor: Nabholz
HVAC Contractor: Comfort Systems

- 1. Duct: Approved
- 2. Duct Sealant Approved
- 3. Kitchen Hood Systems Approved
- 4. Mini-Splits Approved as corrected
 - a. Provide means for control by DDC system on ceiling cassettes.
 - b. Coordinate electrical changes for DSCU1-1, 2-1, 2-2.

5. Residential Kitchen Hoods Approved

6. Welding Exhaust Drops Approved

7. Pipe Hanging and Support Approved

8. Identification Approved

9. TAB Approved

10. Insulation Approved

11. Controls Approved

12. Refrigerant Piping Approved

13. Take off fitting Approved

14. Fans Approved

15. Air Devices Approved as corrected

- a. V – provide insect screen.

16. Fabric Duct Revise and Resubmit

- a. Cfm's and lengths don't match plans.

Quality People. Building Solutions.

Comfort Systems USA (Arkansas), Inc.
P.O. Box 16620
Little Rock, AR 72231
Phone 501-834-3320
Fax 501-834-5416

Date: 8/14/2023

Return Request: 8/24/2023

Project: Southside HS & JH Additions

Supplier: Airetech

Manufacturer: Greenheck

Submittal: Residential Kitchen Hoods

Submittal Number: 23 00 00-03

Drawing # and Installation: Mechanical Drawings

ARCHITECT

Lewis Architects Engineers
11225 Huron Lane, Suite 104
Little Rock, AR 72211
501-223-9302

ENGINEER

Lewis Architects Engineers
11225 Huron Lane, Suite 104
Little Rock, AR 72211
501-223-9302

GENERAL CONTRACTOR

Nabholz
612 Garland St.
Conway, AR 72032
501-505-5800

MECHANICAL SUBCONTRACTOR

Comfort Systems USA (Arkansas), Inc.
9924 Landers Rd.
N. Little Rock, AR 72117
501-834-3320

Notes:

CSUSA PROJECT NO.

23-8009

dpierce@comfortar.com

9924 Landers Rd.
No. Little Rock, AR 72117



SUBMITTAL DATA

EQUIPMENT: Residential Kitchen Hoods with Fire Suppression

SPEC SECTION: No Spec Section

TAGS: RKH-1 THRU 6

PROJECT: Southside High School and Junior High Additions

LOCATION: Batesville, AR

ENGINEER:



CONTRACTOR:



DATE: 7/26/2023

SUBMITTED BY: Forrest Moseley
forrest@airetechcorp.com
501-425-6112

GRRS Residential Range Hood

Quantity	Model	Configuration	Hood Length (in.)	Width Top (in.)	Width Bottom (in.)	Height (in.)	Airflow (CFM)	Collar Diameter (in.)	Total Hood S.P. (in. wg)	Total Weight (lb)
5	GRRS	Wall-Mount	30	12	23.5	12.5	250	N/A	N/A	86

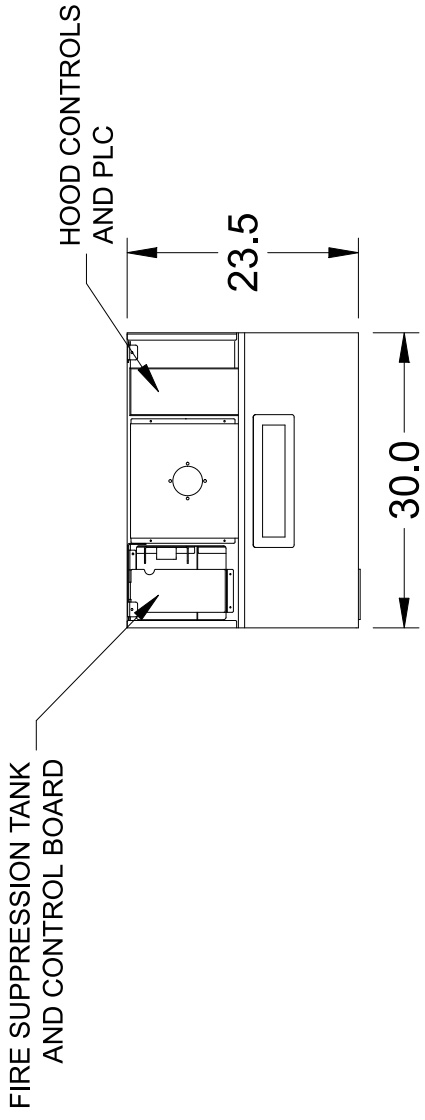
Ventilation Style	Integral Fan - Front Recirculation
Fire System Permit, Startup and Puff Test	Permitting, complete startup and puff test included
Fire Test Kit (Empty Test Cylinder Only)	Compressed air test cylinder for puff test

Material: 300 SS Where Exposed
UL Listing: Subject 300A

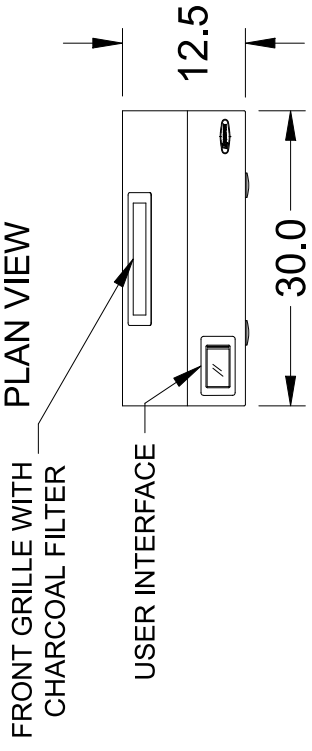
Features:
 Self-Contained Fire Suppression System
 Electronic Detection
 Fully Plug and Play Design
 Sealed with NSF Approved Caulk
 Full Color LCD Touch Screen User Interface - Hood Mounted

Section Data

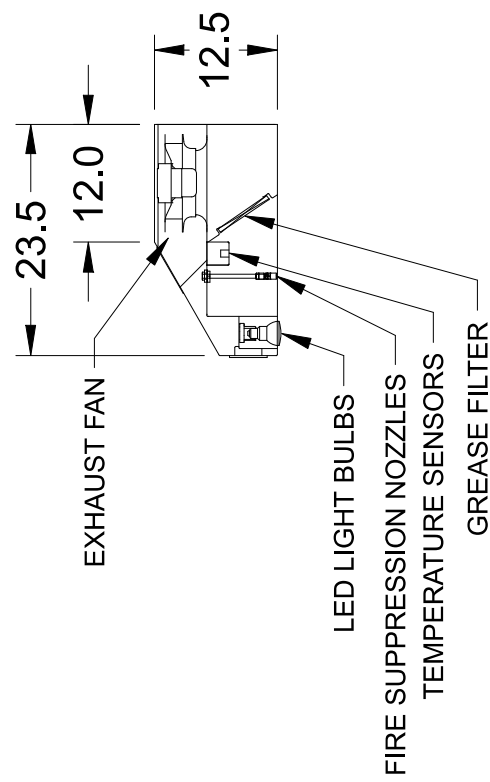
Hood and Fan Power				Disconnects for Appliance					Lighting Details		UI
Voltage	Phase	Breaker Size	Operating current	Electric			Gas	Fixture Type/Bulb	Qty	User Interface	
				Recpt	Voltage	Phase	Max Amps				Valve Size
115	1	15	1.2	5-15	115	1	15	3/4"	115VAC 7W E26 LED 2200-2700K Color	2	Hood Mounted



MARK: RKH-1 THRU 5
PLAN VIEW



MARK: RKH-1 THRU 5
ELEVATION VIEW

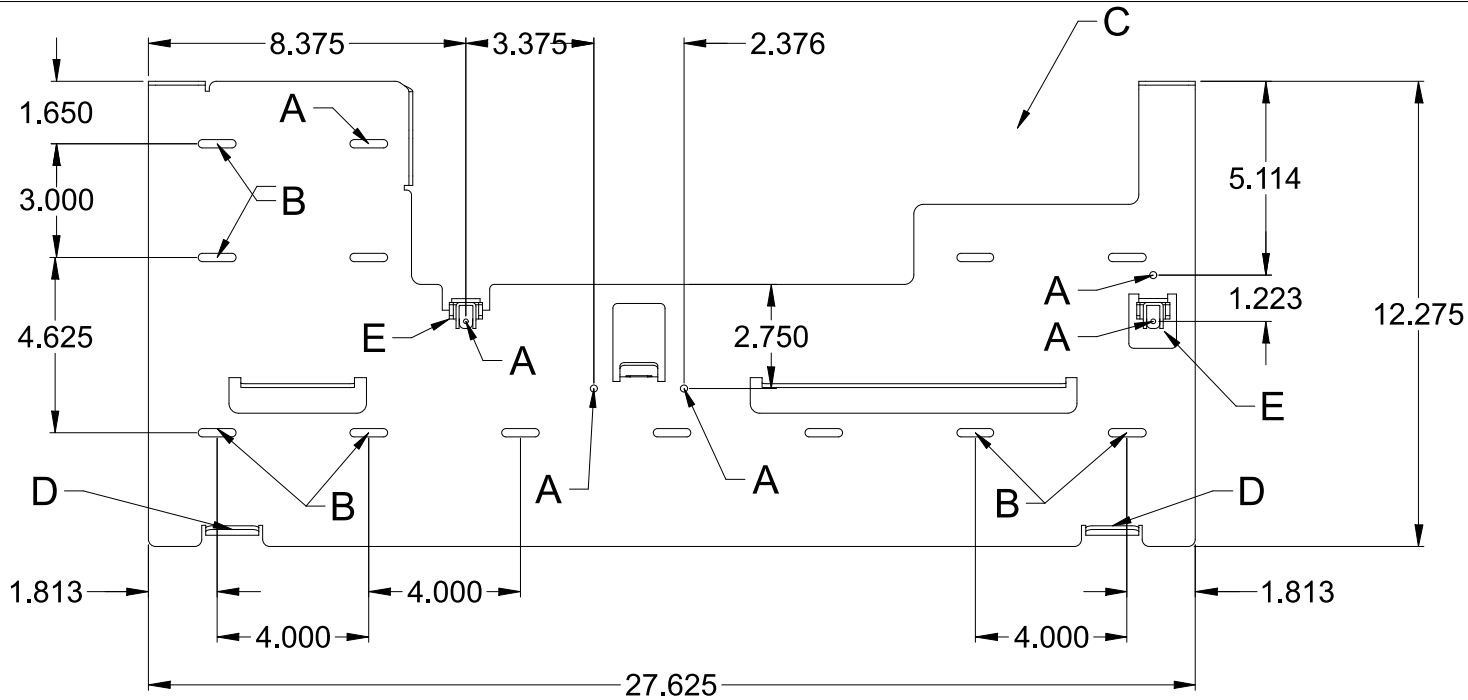


MARK: RKH-1 THRU 5
SECTION VIEW

MARK: RKH-1 thru 6

NOTE: All dimensions are in units of in.

MOUNTING BRACKET DETAIL



MOUNTING BRACKET KEY

- A. CRITICAL MOUNTING POINTS (MUST BE SECURED TO STUDS OR DRY WALL HANGERS)
- B. UTILIZE ONE OF THESE TWO CRITICAL POINTS FOR SECURING TO STUD OR DRY WALL HANGERS (THREE TOTAL)
- C. LOCATION FOR FACTORY PROVIDED 4" H X 6" W X 3.5" D CONTROL J-BOX
- D. HOOD SUPPORT TABS
- E. HOOD LATCH CONNECTIONS

NOTES:

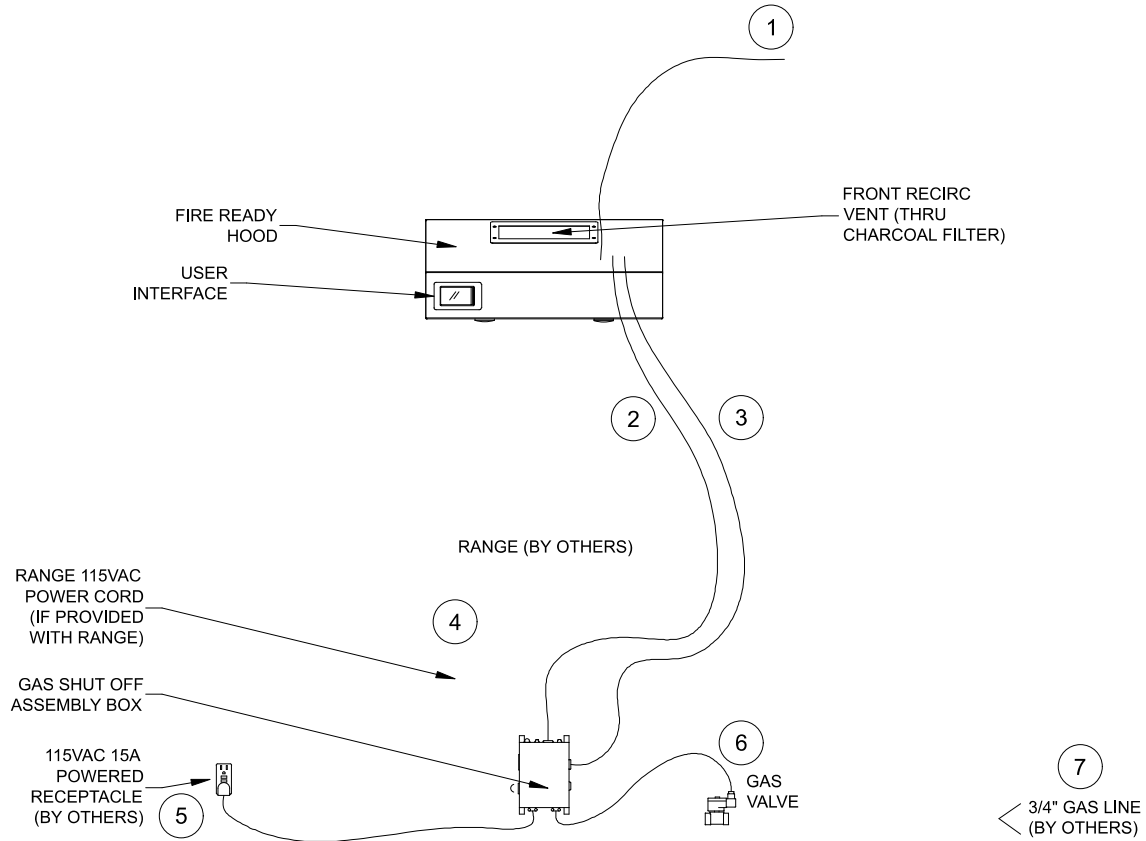
- 1) BEFORE MOUNTING, SITUATE MOUNTING BRACKET ON WALL, MAKING SURE CRITICAL MOUNTING POINTS ARE MET AND DISTANCE FROM BOTTOM OF BRACKET TO COOKING SURFACE IS BETWEEN 24 AND 30 INCHES.
- 2) CUT OUT SPACE IN WALL FOR FACTORY PROVIDED CONTROL J-BOX AND SECURE IN PLACE.
- 3) SECURE MOUNTING BRACKET TO WALL USING THE PROPER FIELD PROVIDED FASTENERS USING CRITICAL MOUNTING POINTS SHOWN ABOVE.

NOTE: All dimensions are in units of in.

FIELD DIAGRAM

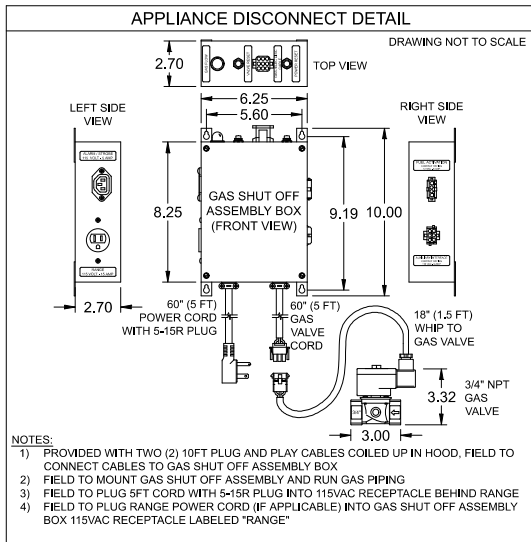
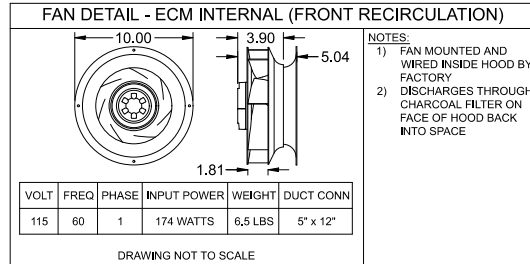
FIELD DIAGRAM CODE:	WDC#
DOC NUMBER: —	REV: —

PROVIDED BY
OTHERS



CONNECTION LEGEND

ID	ITEM	ITEM DETAILS
1	HOOD POWER	FIELD TO PROVIDE 115VAC POWER FROM 15A BREAKER TO TERMINAL BLOCKS H1 AND N1 INSIDE HOOD (GROUND TO GROUNDING TERMINAL).
2	GAS/ELECTRIC DISCONNECT CABLE 1	10 FT PLUG AND PLAY CABLE WITH RED LABEL COILED UP AND ATTACHED TO 9PIN CONNECTION AT HOOD. FIELD TO PLUG THIS INTO GAS/ELECTRIC SHUT OFF ASSEMBLY BOX.
3	GAS/ELECTRIC DISCONNECT CABLE 2	10 FT PLUG AND PLAY CABLE COILED UP AND ATTACHED TO 4PIN CONNECTION AT HOOD. FIELD TO PLUG THIS INTO GAS/ELECTRIC SHUT OFF ASSEMBLY BOX.
4	RANGE POWER CORD	PLUG RANGE POWER CORD (IF PROVIDED WITH RANGE) INTO GAS SHUT OFF ASSEMBLY BOX.
5	SHUT OFF ASSEMBLY BOX POWER	PLUG GAS SHUT OFF ASSEMBLY BOX POWER CORD INTO NEARBY 115VAC RECEPTACLE.
6	SHUT OFF ASSEMBLY VALVE POWER	GAS VALVE TO CONNECT TO QUICK CONNECTOR, CONNECTS 5FT GAS VALVE POWER CORD TO 1.5FT CABLE ON GAS VALVE.
7	GAS LINE	PIPE GAS LINE INTO GAS VALVE INLET, THEN OUT OF GAS VALVE OUTLET TO RANGE.



NOTE: All dimensions are in units of in.

Labor Information:

Hook-up of detection line and supply line is included.
Surface mounting of the manual pull station in a pre-determined location is included.
Charging and arming of the system is included.
Permit Included
Hood Puff Test Fee Included
Travel Fee Included

Items which may be supplied by the factory, but are not installed or hooked-up by the factory OR the installing distributor:

Gas valve (not applicable for PCU)
Microswitch(es)
Remote mounted cabinets, enclosures, or tank brackets

Not included unless explicitly stated elsewhere in the quote as included:

Special, signed, or sealed drawings required to satisfy a state or local code
Parts or labor required to correct piping due to cooking equipment changes or deviation from approved drawings
More than two trips to the jobsite, special transportation, or overnight lodging requirement in remote areas. Typical travel distance is defined as the first 50 miles from the distributor's office
A shut-off device (e.g. shunt-trip breaker) for electric cooking equipment
All electrical connections required to shut down fan(s), electric cooking equipment, activate an alarm system, etc. aside from what is explicitly stated as "factory-wired" in the Accurex control's scope (if provided)
Installation of the gas shut-off valve
Pre-test
Full dump test or any other system test requirement outside of a standard puff test
Special classes or additional labor for access to security sensitive areas
Union labor, government labor, or prevailing wages required for field hook-up
Any dismantling or reassembly required where access to the fire suppression piping has been blocked
Plan examination fees
Rough-in conduit for remote pull station (for flush mounted pull station) or gas valve
Additional remote pull stations beyond the quantity specified in the submittals

GRRS Residential Range Hood

Quantity	Model	Configuration	Hood Length (in.)	Width Top (in.)	Width Bottom (in.)	Height (in.)	Airflow (CFM)	Collar Diameter (in.)	Total Hood S.P. (in. wg)	Total Weight (lb)
1	GRRS	Wall-Mount	30	12	23.5	12.5	250	N/A	N/A	86

Selected Options & Accessories

Option or Accessory	Description
Ventilation Style	Integral Fan - Front Recirculation
Manual Pull Station	Surface mounted manual pull station kit
Fire System Permit, Startup and Puff Test	Permitting, complete startup and puff test included
Fire Test Kit (Empty Test Cylinder Only)	Compressed air test cylinder for puff test

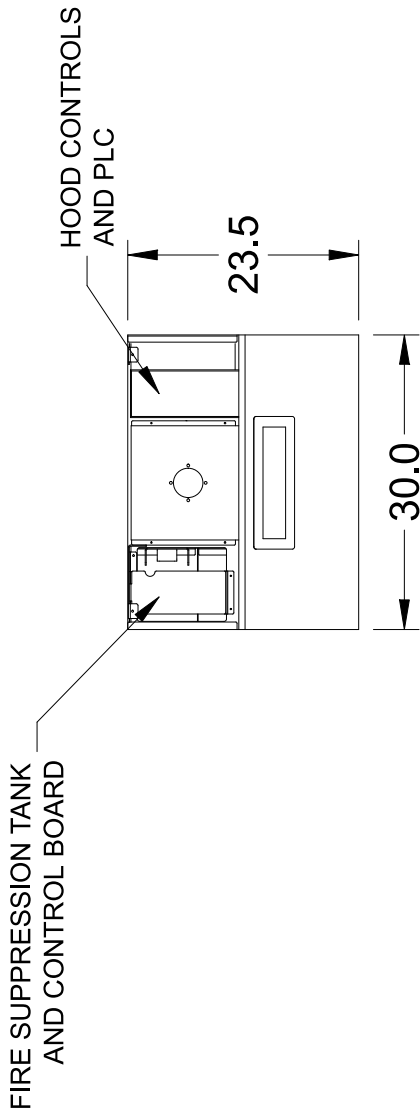
Material: 300 SS Where Exposed
UL Listing: Subject 300A

Features:

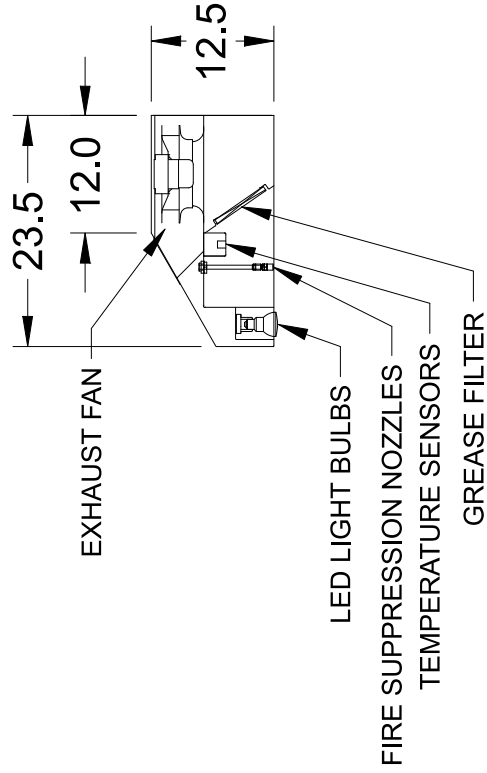
Self-Contained Fire Suppression System
 Electronic Detection
 Fully Plug and Play Design
 Sealed with NSF Approved Caulk
 Full Color LCD Touch Screen User Interface - Shipped Loose for ADA Compliance

Section Data

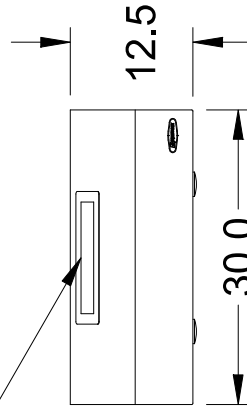
Hood and Fan Power				Disconnects for Appliance					Lighting Details		UI
				Electric			Gas				
Voltage	Phase	Breaker Size	Operating current	Recpt	Voltage	Phase	Max Amps	Valve Size	Fixture Type/Bulb	Qty	User Interface
115	1	15	1.2	14-50R	208-250	1	50	N/A	115VAC 7W E26 LED 2200-2700K Color	2	Shipped Loose



MARK: RKH-6
PLAN VIEW



MARK: RKH-6
SECTION VIEW

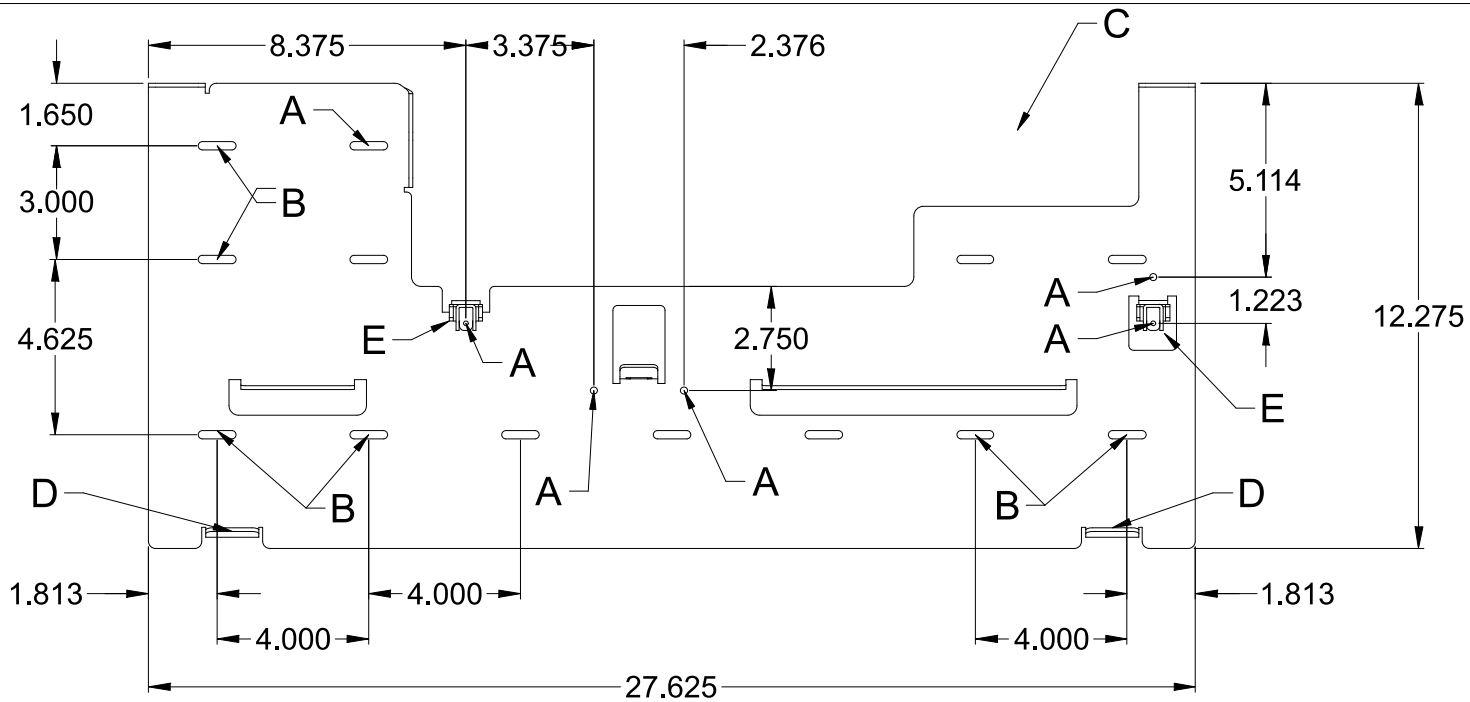


MARK: RKH-6
ELEVATION VIEW

MARK: RKH-1 thru 5 (1)

NOTE: All dimensions are in units of in.

MOUNTING BRACKET DETAIL



MOUNTING BRACKET KEY

- A. CRITICAL MOUNTING POINTS (MUST BE SECURED TO STUDS OR DRY WALL HANGERS)
- B. UTILIZE ONE OF THESE TWO CRITICAL POINTS FOR SECURING TO STUD OR DRY WALL HANGERS (THREE TOTAL)
- C. LOCATION FOR FACTORY PROVIDED 4" H X 6" W X 3.5" D CONTROL J-BOX
- D. HOOD SUPPORT TABS
- E. HOOD LATCH CONNECTIONS

NOTES:

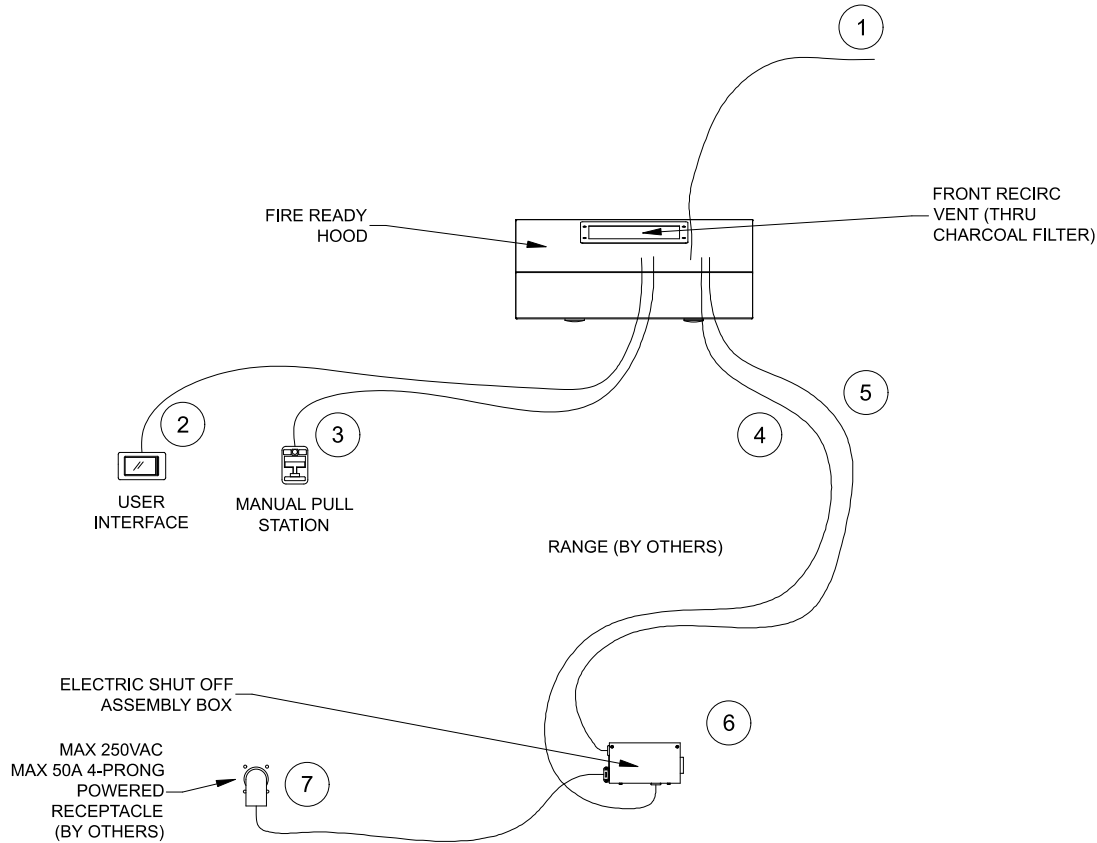
- 1) BEFORE MOUNTING, SITUATE MOUNTING BRACKET ON WALL, MAKING SURE CRITICAL MOUNTING POINTS ARE MET AND DISTANCE FROM BOTTOM OF BRACKET TO COOKING SURFACE IS BETWEEN 24 AND 30 INCHES.
- 2) CUT OUT SPACE IN WALL FOR FACTORY PROVIDED CONTROL J-BOX AND SECURE IN PLACE.
- 3) SECURE MOUNTING BRACKET TO WALL USING THE PROPER FIELD PROVIDED FASTENERS USING CRITICAL MOUNTING POINTS SHOWN ABOVE.

NOTE: All dimensions are in units of in.

FIELD DIAGRAM

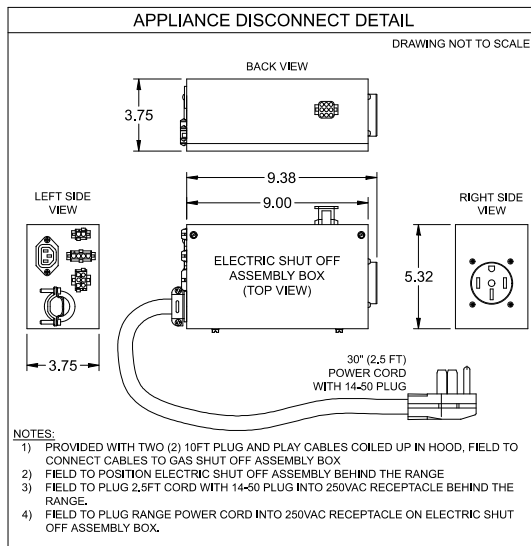
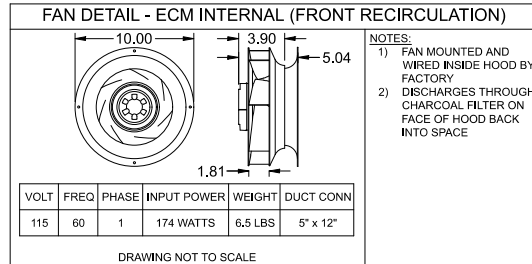
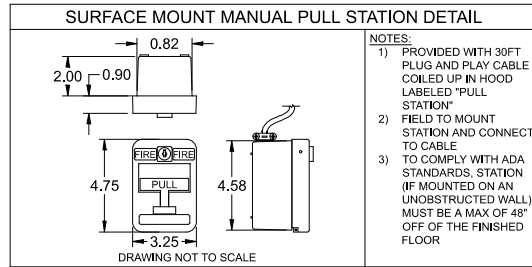
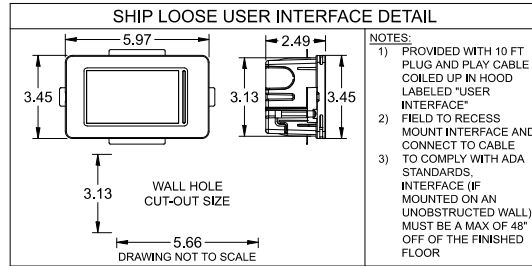
FIELD DIAGRAM CODE:	WDC#
DOC NUMBER: —	REV: —

PROVIDED BY
OTHERS



CONNECTION LEGEND

ID	ITEM	ITEM DETAILS
1	HOOD POWER	FIELD TO PROVIDE 115VAC POWER FROM 15A BREAKER TO TERMINAL BLOCKS H1 AND N1 INSIDE HOOD (GROUND TO GROUNDING TERMINAL).
2	SHIP LOOSE USER INTERFACE	10 FT PLUG AND PLAY CABLE WITH LIGHT BLUE LABEL COILED UP AND ATTACHED TO HOOD. FIELD TO CONNECT PLUG TO BACK OF USER INTERFACE INSIDE INTERFACE J-BOX.
3	MANUAL PULL STATION	30 FT PLUG AND PLAY CABLE COILED UP AND ATTACHED TO HOOD. FIELD TO CONNECT TO MANUAL PULL STATION VIA QUICK CONNECTOR IN STATION J-BOX.
4	GAS/ELECTRIC DISCONNECT CABLE 1	10 FT PLUG AND PLAY CABLE WITH RED LABEL COILED UP AND ATTACHED TO 9PIN CONNECTION AT HOOD. FIELD TO PLUG THIS INTO GAS/ELECTRIC SHUT OFF ASSEMBLY BOX.
5	GAS/ELECTRIC DISCONNECT CABLE 2	10 FT PLUG AND PLAY CABLE COILED UP AND ATTACHED TO 4PIN CONNECTION AT HOOD. FIELD TO PLUG THIS INTO GAS/ELECTRIC SHUT OFF ASSEMBLY BOX.
6	RANGE POWER CORD	PLUG RANGE POWER CORD (IF PROVIDED WITH RANGE) INTO 14-50R RECEPTACLE ON ELECTRIC SHUT OFF ASSEMBLY BOX.
7	SHUT OFF ASSEMBLY BOX POWER	PLUG 2.5 FT ELECTRIC SHUT OFF ASSEMBLY BOX POWER CORD INTO NEARBY 4-PRONG 14-50R 250VAC RECEPTACLE.



NOTE: All dimensions are in units of in.

Labor Information:

Hook-up of detection line and supply line is included.
Surface mounting of the manual pull station in a pre-determined location is included.
Charging and arming of the system is included.
Permit Included
Hood Puff Test Fee Included
Travel Fee Included

Items which may be supplied by the factory, but are not installed or hooked-up by the factory OR the installing distributor:

Gas valve (not applicable for PCU)
Microswitch(es)
Remote mounted cabinets, enclosures, or tank brackets

Not included unless explicitly stated elsewhere in the quote as included:

Special, signed, or sealed drawings required to satisfy a state or local code
Parts or labor required to correct piping due to cooking equipment changes or deviation from approved drawings
More than two trips to the jobsite, special transportation, or overnight lodging requirement in remote areas. Typical travel distance is defined as the first 50 miles from the distributor's office
A shut-off device (e.g. shunt-trip breaker) for electric cooking equipment
All electrical connections required to shut down fan(s), electric cooking equipment, activate an alarm system, etc. aside from what is explicitly stated as "factory-wired" in the Accurex control's scope (if provided)
Installation of the gas shut-off valve
Pre-test
Full dump test or any other system test requirement outside of a standard puff test
Special classes or additional labor for access to security sensitive areas
Union labor, government labor, or prevailing wages required for field hook-up
Any dismantling or reassembly required where access to the fire suppression piping has been blocked
Plan examination fees
Rough-in conduit for remote pull station (for flush mounted pull station) or gas valve
Additional remote pull stations beyond the quantity specified in the submittals