



*Quality People. Building Solutions.*

Comfort Systems USA (Arkansas), Inc.  
P.O. Box 16620  
Little Rock, AR 72231  
Phone 501-834-3320  
Fax 501-834-5416

**Date:** 2/21/2024

**Return Request:** 3/28/2024

**Project:** Little Rock West High School

**Supplier:** A/C Specialties

**Manufacturer:** Price

**Submittal:** Air Outlets & Inlets

**Submittal Number:** 23 37 00-01

**Drawing # and Installation:** Mechanical Drawings

**ARCHITECT**

Lewis Architects Engineers  
11225 Huron Lane, Suite 104  
Little Rock, AR 72211  
501-223-9302

**ENGINEER**

Lewis Architects Engineers  
11225 Huron Lane, Suite 104  
Little Rock, AR 72211  
501-223-9302

**GENERAL CONTRACTOR**

Baldwin & Shell  
1000 W. Capitol Ave.  
Little Rock, AR 72201  
501-374-8677

**MECHANICAL SUBCONTRACTOR**

Comfort Systems USA (Arkansas), Inc.  
9924 Landers Rd.  
N. Little Rock, AR 72117  
501-834-3320

Notes:

--

[chowell@comfortar.com](mailto:chowell@comfortar.com)

9924 Landers Rd.  
No. Little Rock, AR 72117



# Grilles/Registers/Diffusers Submittals

**Job Name:** Little Rock West High School  
**Job Location:** Little Rock, AR  
**Customer:** Unknown  
**Date Printed:** 12/21/2023  
**Spec Section:** 15 - HVAC

**Contact:** 7631 Northshore Place  
N. Little Rock, AR 72118



**All-In-One**  
**Detailed Submittal Schedule**  
**Grilles/Registers/Diffusers**

Tag	A	B	C	C1
#	1	2	3	4
Qty	17	62	371	2
Model	AMD	AMD	AMD	AMD
Unit Size	9, 9	9, 9	12, 12	12, 12
Inlet Size				
Border	3PA	3PA	3PA	3PA
Pattern	4A	4A	4A	4A
Face Size	24, 24	24, 24	24, 24	24, 24
Accessories	SR8E, 6, R6	SR8E, 8, R6	SR8E, 10, R6	SR8E, 10, R6
Line Instructions				

Tag		C2	D	E
#	5	6	7	8
Qty	11	9	13	27
Model	APF	AMD	AMD	80
Unit Size		12, 12	18, 18	10.000, 10.000
Inlet Size				
Border		3PA	36	F
Pattern		4A	4A	
Face Size	24, 24	24, 24	24, 24	
Accessories	MC	SR8E, 10, R6	SR8E, 12	LI
Line Instructions				

Tag		F	G	
#	9	10	11	12
Qty	27	23	16	16
Model	SR	80	80	SR
Unit Size	6	22.000, 10.000	22.000, 22.000	12
Inlet Size				
Border		F	F	
Pattern				
Face Size	10, 10			22, 22
Accessories		LI	LI	
Line Instructions				

Tag	H		J	K
#	13	14	15	16
Qty	7	7	22	63
Model	80	SR	TBDI3100	TBDI3100
Unit Size	22.000, 22.000	10	48, 4	48, 4
Inlet Size			6x12.078	6x15.218
Border	F			
Pattern				
Face Size		22, 22	6x12.078	6x15.218
Accessories	LI		BFS	BFS
Line Instructions				

Tag	L	M	N	N1
#	17	18	19	20
Qty	39	10	11	2
Model	TBDI3100	AMD	80	80
Unit Size	48, 2	6, 6	46.000, 22.000	46.000, 22.000
Inlet Size	4x10.125			
Border		36	F	F
Pattern		4A		
Face Size	4x10.125	12, 12		
Accessories	BFS	SR8E, 6, R6	LI	LI
Line Instructions				

Tag		P	P1	Q
#	21	22	23	24
Qty	2	102	2	6
Model	APF	80	80	80FF
Unit Size		22.000, 22.000	22.000, 22.000	24.000, 24.000
Inlet Size				
Border		F	F	TB
Pattern				
Face Size	48, 24			20, 20
Accessories	MC	LI	LI	1, HL
Line Instructions				



Tag	R	S	T	U
#	25	26	27	28
Qty	1	1	1	6
Model	93	93	90	90
Unit Size	36.000, 24.000	42.000, 42.000	36.000, 20.000	80.000, 48.000
Inlet Size				
Border				
Pattern	S	S	L	S
Face Size				
Accessories				
Line Instructions				OVERSIZED, SUPPLIED AS SEPARATE GRILLES C/W MOUNTING CHANNEL(S)

Tag	V	W	Y	Z
#	29	30	31	32
Qty	4	4	5	32
Model	90	93	93	STG1
Unit Size	80.000, 60.000	80.000, 48.000	80.000, 60.000	16.000, 16.000
Inlet Size				
Border				BF
Pattern	S	S	S	
Face Size				
Accessories				
Line Instructions	OVERSIZED, SUPPLIED AS SEPARATE GRILLES C/W MOUNTING CHANNEL(S)	OVERSIZED, SUPPLIED AS SEPARATE GRILLES C/W MOUNTING CHANNEL(S)	OVERSIZED, SUPPLIED AS SEPARATE GRILLES C/W MOUNTING CHANNEL(S)	

Tag	AA	BB	CC	DD
#	33	34	35	36
Qty	4	2	1	1
Model	93	93	93	520
Unit Size	30.000, 30.000	20.000, 16.000	24.000, 16.000	12.000, 6.000
Inlet Size				
Border				F
Pattern	S	L	L	L
Face Size				
Accessories				SW
Line Instructions				

Tag	EE	FF	GG	A - BSB and SB
#	37	38	39	40
Qty	1	8	5	1
Model	520	RCDA	AMD	AMD
Unit Size	16.000, 6.000	10	12, 12	18, 18
Inlet Size		10		
Border	F		3PA	36
Pattern	L		3A	4A
Face Size			24, 24	24, 24
Accessories	SW		SR8E, 10, R6	SR8E, 12
Line Instructions				

Tag	B - BSB and SB	Z - BSB and SB
#	41	42
Qty	1	8
Model	AMD	STG1
Unit Size	12, 12	16.000, 16.000
Inlet Size		
Border	3PA	BF
Pattern	4A	
Face Size	24, 24	
Accessories	SR8E, 10, R6	
Line Instructions		



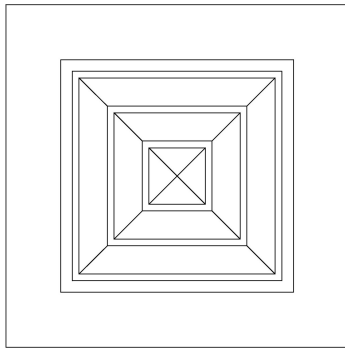
## Performance Notes

Date Printed: 12/21/2023

1. Tested in accordance with ASHRAE Standard 70-2006 "Method of Testing for Rating the Performance of Air Outlets and Inlets".
2. Throw data is based on the temperature differential (Dt), in degrees Fahrenheit (°F), between supply air temperature and room temperature.
3. Throw values, in feet (ft), are provided at terminal air velocities of 150 fpm, 100 fpm, and 50 fpm for supply applications.
4. The NC, sound pressure level, is based on a room absorption of 10dB re  $10^{-12}$  Watts in each octave band.
5. Blanks (--) indicate an NC level below 15.
6. Air flow is in cubic feet per minute (cfm).
7. Static pressure (Ps), velocity pressure (Pv), and total pressure (Pt) are in inches of water (in. w.g.).

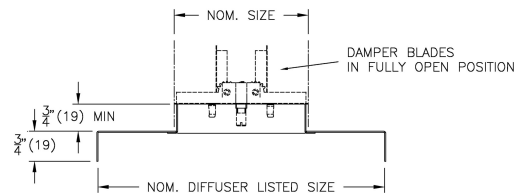
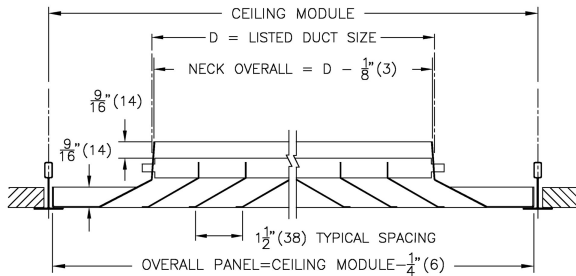
## AMD Aluminum Modular Directional Diffuser

**Core Style:** 4A 4-Way, Style A for Square Inlet Neck



**Border:** 3PA Aluminum T-Bar Panel Lay-In 1" (25)

**Accessory:** SR8E Square to Round Adapter with VCR8E Damper



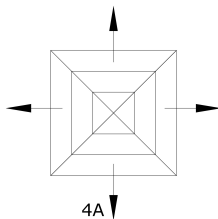
### Notes:

- Cores sized in increments of 3" (76) in both directions
- SR8E Square to Round Adaptor (Shipped mounted) with Butterfly volume control damper shipped loose
- R6 insulation - diffuser backpan only, SR not insulated
- Directional core removable at diffuser face
- Factory tolerance  $\pm 1/32$ " (1)

### Material:

- Aluminum Construction
- Panel: Aluminum
- SR Adapter: Steel
- Damper: Steel

### Plan View:



### Finish:

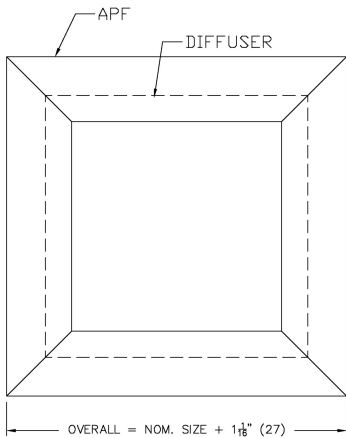
- B12: Standard White
- PC12: Prime Coat

**PROJECT:** Little Rock West High School  
**ENGINEER:**  
**DESCRIPTION:** Aluminum Louvered Directional Diffuser  
AMD//I/9,12/9,12/3PA/4A/24/24/SR8E/6,8,10/R6/B12,PC12

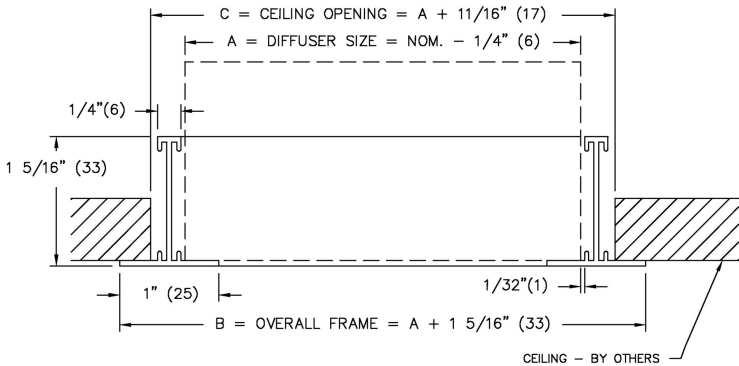
**SUBMITTAL NO:** 258515-C  
**CUSTOMER:** Unknown

**SUBMITTAL DATE:** 12/21/2023

APF    Aluminum Plaster Frame

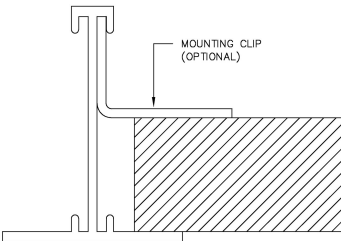


Nom. Diffuser Size	A	B	C
24 x 24	23 3/4 x 23 3/4	25 1/16 x 25 1/16	24 7/16 x 24 7/16
48 x 24	47 3/4 x 23 3/4	49 1/16 x 25 1/16	48 7/16 x 24 7/16



Options:

- Mounting Clips



Notes:

- Factory Tolerance  $\pm 1/32"$  (1)

Material:

- Extruded Aluminum

Finish:

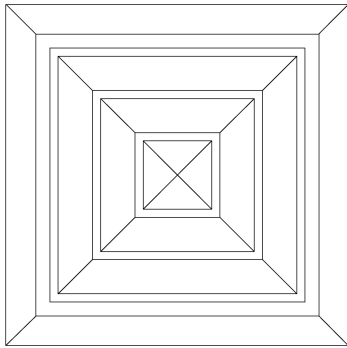
- B12: Standard White

<b>PROJECT:</b> Little Rock West High School	<b>SUBMITTAL NO:</b> 261481	<b>SUBMITTAL DATE:</b> 12/21/2023
<b>ENGINEER:</b>	<b>CUSTOMER:</b> Unknown	
<b>DESCRIPTION:</b> Aluminum Plaster Frame		
APF-1-1//CD////24,48/24/MC//B12		



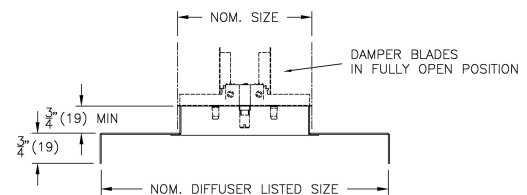
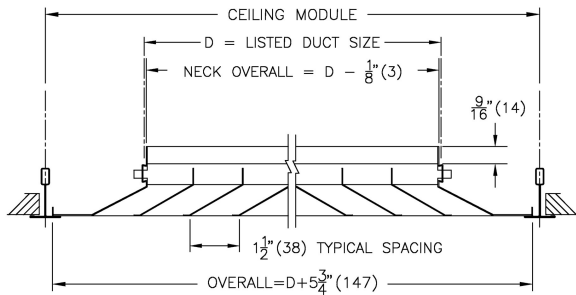
## AMD Aluminum Modular Directional Diffuser

**Core Style:** 4A 4-Way, Style A for Square Inlet Neck



**Border:** 36 T-Bar Lay-In 1" (25)

**Accessory:** SR8E Square to Round Adapter with VCR8E Damper



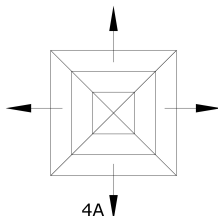
### Notes:

- Cores sized in increments of 3" (76) in both directions
- SR8E Square to Round Adaptor (Shipped mounted) with Butterfly volume control damper shipped loose
- R6 insulation - diffuser backpan only, SR not insulated
- Directional core removable at diffuser face
- Factory tolerance  $\pm 1/32$ " (1)

### Material:

- Aluminum Construction
- SR Adapter: Steel
- Damper: Steel

### Plan View:



### Finish:

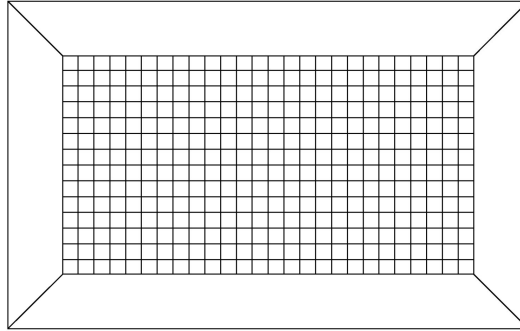
- B12: Standard White

**PROJECT:** Little Rock West High School  
**ENGINEER:**  
**DESCRIPTION:** Aluminum Louvered Directional Diffuser  
AMD//I/18,6/18,6/36/4A/24,12/24,12/SR8E/12,6/R6/B12

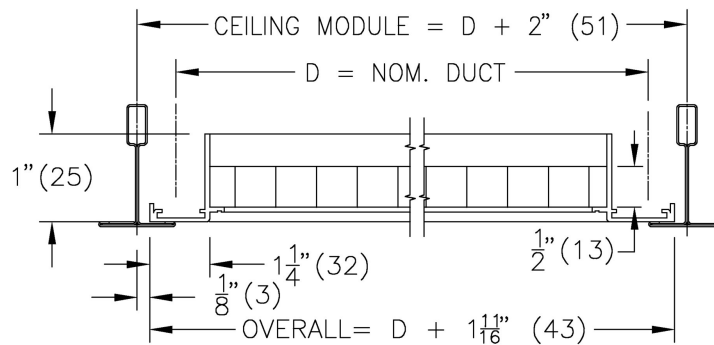
**SUBMITTAL NO:** 258515-C  
**CUSTOMER:** Unknown

**SUBMITTAL DATE:** 12/21/2023

**80 Egg Crate Grille – 1/2" x 1/2" x 1/2" Core**



**Border:** F  
1 1/4" (32) Flat Frame



**Material:**

- Grille - Aluminum construction

**Finish:**

- B12 - Standard White

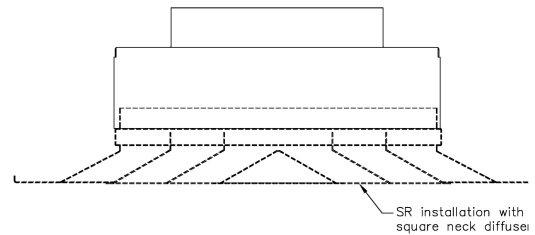
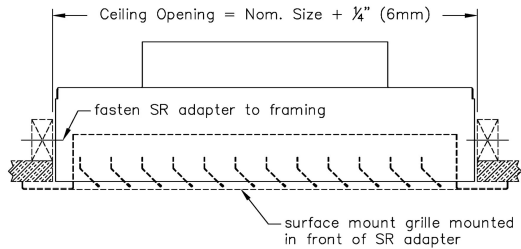
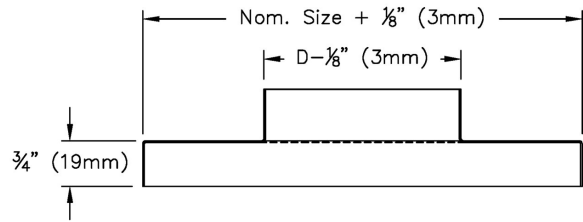
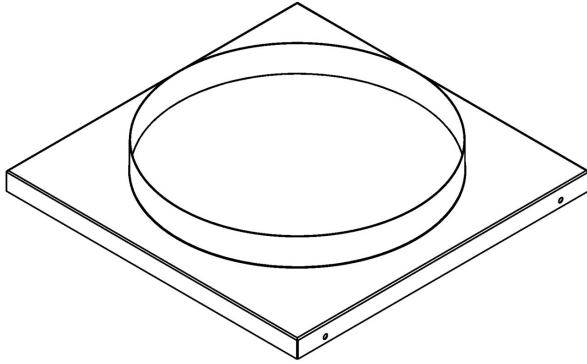
- Notes:**
- 1/2" x 1/2" x 1/2" aluminum grid core
  - Minimum duct size = 6" x 4" (152mm x 102mm)
  - Maximum duct size without mullion = 48" x 24" (1219mm x 610mm)
  - Maximum duct size with mullion = 96" x 48" (2438mm x 1219mm)
  - Units with mullion supplied in one-piece frame construction
  - Units over 96" x 48" (2438mm x 1219mm) supplied in sections c/w Duct Mounting Channel
  - Factory tolerance  $\pm 1/32$ " (1mm)

**PROJECT:** Little Rock West High School  
**ENGINEER:**  
**DESCRIPTION:** Egg Crate Grille, 1/2" X 1/2" X 1/2"  
80///10.000,22.000,46.000/10.000,22.000//LI/F/////12,24,48/12,24///0/////B12

**SUBMITTAL NO:** 259683-E  
**CUSTOMER:** Unknown

**SUBMITTAL DATE:** 12/21/2023

## SR Square To Round Adapter



### Notes:

- Fits square neck diffusers including SMD, SMDA, SMX, SMCD, AMD, AMDA, AMX, AMDE and AMCD
- May be installed with grilles in drywall ceiling by fastening to ceiling and framing and installing grille in front
- Factory tolerance  $\pm 1/32$ "

### Construction:

- Standard inlet neck

### Material:

- Coated Steel

### Finish:

- Mill finish



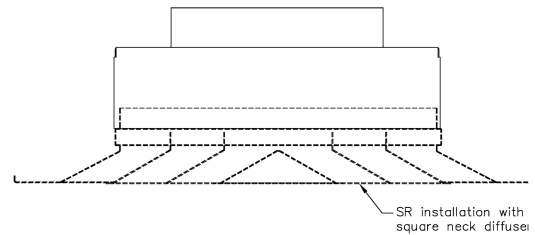
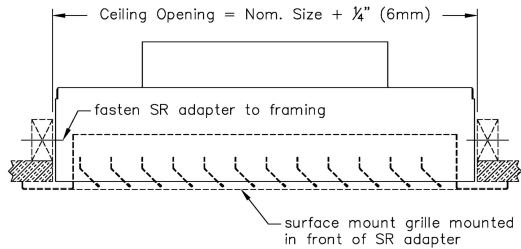
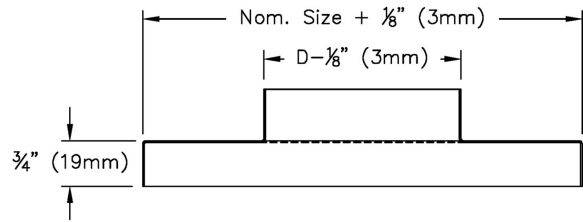
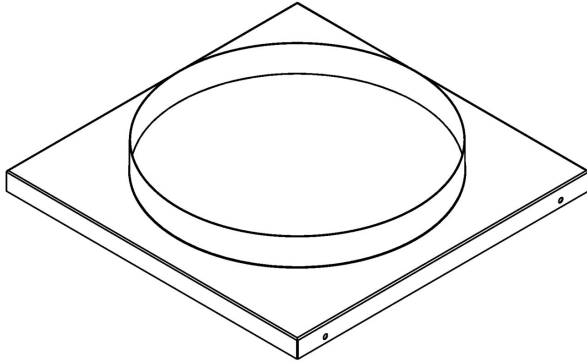
Scan for link to additional product information

**PROJECT:** Little Rock West High School  
**ENGINEER:**  
**DESCRIPTION:** Square To Round Adapter  
 SR-1-1//IN/10/10/6//SHORT/STL/MILL

**SUBMITTAL NO:** 275210-0  
**CUSTOMER:** Unknown

**SUBMITTAL DATE:** 12/21/2023

## SR Square To Round Adapter



### Notes:

- Fits square neck diffusers including SMD, SMDA, SMX, SMCD, AMD, AMDA, AMX, AMDE and AMCD
- May be installed with grilles in drywall ceiling by fastening to ceiling and framing and installing grille in front
- Factory tolerance  $\pm 1/32$ "

### Construction:

- Standard inlet neck

### Material:

- Coated Steel

### Finish:

- Mill finish



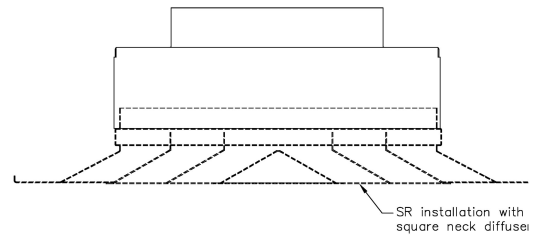
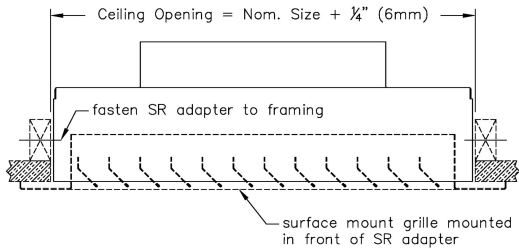
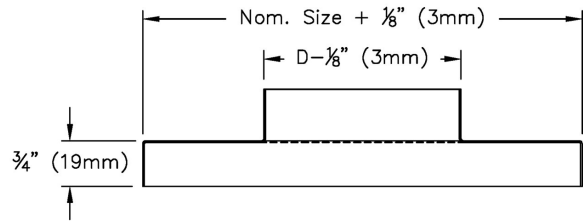
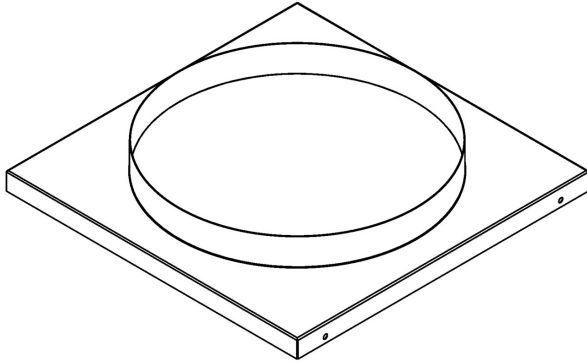
Scan for link to additional product information

**PROJECT:** Little Rock West High School  
**ENGINEER:**  
**DESCRIPTION:** Square To Round Adapter  
 SR-1-1//IN/22/22/12//SHORT/STL/MILL

**SUBMITTAL NO:** 275210-0  
**CUSTOMER:** Unknown

**SUBMITTAL DATE:** 12/21/2023

## SR Square To Round Adapter



### Notes:

- Fits square neck diffusers including SMD, SMDA, SMX, SMCD, AMD, AMDA, AMX, AMDE and AMCD
- May be installed with grilles in drywall ceiling by fastening to ceiling and framing and installing grille in front
- Factory tolerance  $\pm 1/32$ "

### Construction:

- Standard inlet neck

### Material:

- Coated Steel

### Finish:

- Mill finish



Scan for link to additional product information

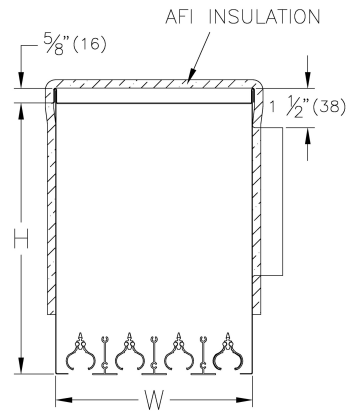
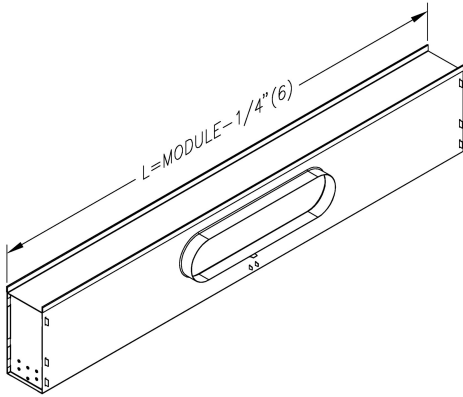
**PROJECT:** Little Rock West High School  
**ENGINEER:**  
**DESCRIPTION:** Square To Round Adapter  
 SR-1-1//IN/22/22/10//SHORT/STL/MILL

**SUBMITTAL NO:** 275210-0  
**CUSTOMER:** Unknown

**SUBMITTAL DATE:** 12/21/2023

## TBDI3100 1" Slot with Ice-Tong Pattern Controller

Module Length	Slot Quantity	Width (W)	Nom. Inlet	Height (H)
48"	4	8"	10" OVAL = 6" x 12 1/16"	11"



### Material:

- Plenum: Coated Steel
- Pattern Controllers: Extruded Aluminum
- Centre Tee: Extruded Aluminum

### Insulation Options:

- AFI - External Aluminum Foil Backed insulation

### Notes:

- 4 Slot Diffuser
- 1" (25) Slot Width
- Pattern controllers are field adjustable to create horizontal or vertical air pattern
- For use with 1" (25) flat tee ceiling grid
- Factory tolerance  $\pm 1/32"$  (1)

### Finish:

- Blades - B17: Black
- BFS: Black Face Surfaces
- Centre Tee - B12: Standard White

**PROJECT:** Little Rock West High School

**ENGINEER:**

**DESCRIPTION:** Insulat T-Bar Supp Diff, Ice-Tong Blades, 1" Slots  
TBDI3100//1/48/4//IMP/6x12.078//AFI/BFS//B12

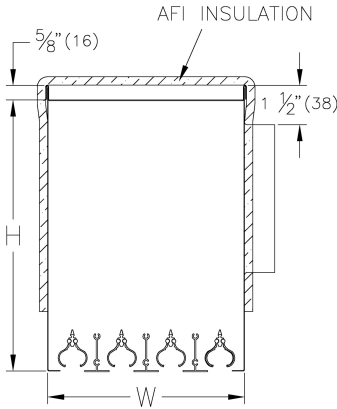
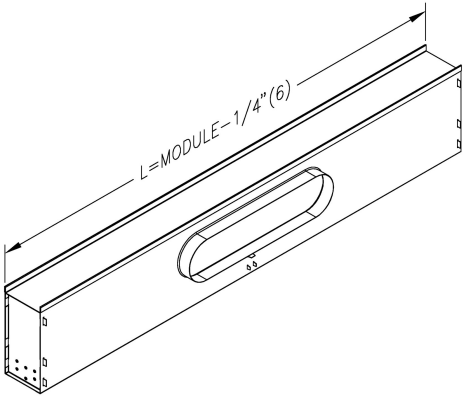
**SUBMITTAL NO:** 258602-B

**CUSTOMER:** Unknown

**SUBMITTAL DATE:** 12/21/2023

**TBDI3100 1" Slot with Ice-Tong Pattern Controller**

Module Length	Slot Quantity	Width (W)	Nom. Inlet	Height (H)
48"	4	8"	12" OVAL = 6" x 15 7/32"	11"



**Material:**

- Plenum: Coated Steel
- Pattern Controllers: Extruded Aluminum
- Centre Tee: Extruded Aluminum

**Insulation Options:**

- AFI - External Aluminum Foil Backed insulation

**Notes:**

- 4 Slot Diffuser
- 1" (25) Slot Width
- Pattern controllers are field adjustable to create horizontal or vertical air pattern
- For use with 1" (25) flat tee ceiling grid
- Factory tolerance  $\pm 1/32"$  (1)

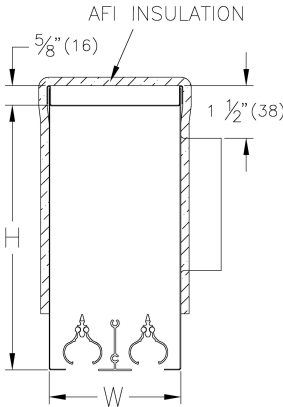
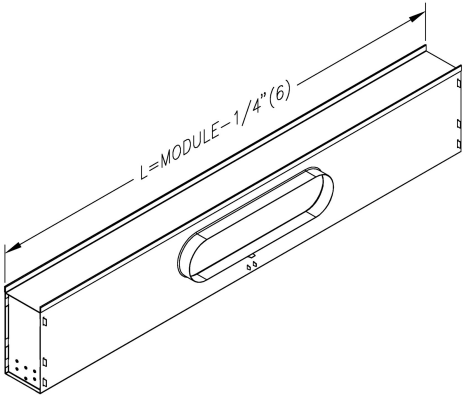
**Finish:**

- Blades - B17: Black
- BFS: Black Face Surfaces
- Centre Tee - B12: Standard White

<b>PROJECT:</b> Little Rock West High School	<b>SUBMITTAL NO:</b> 258602-B	<b>SUBMITTAL DATE:</b> 12/21/2023
<b>ENGINEER:</b>	<b>CUSTOMER:</b> Unknown	
<b>DESCRIPTION:</b> Insulat T-Bar Supp Diff, Ice-Tong Blades, 1" Slots TBDI3100//1/48/4//IMP/6x15.218//AFI/BFS//B12		

TBDI3100 1" Slot with Ice-Tong Pattern Controller

Module Length	Slot Quantity	Width (W)	Nom. Inlet	Height (H)
48"	2	4"	8" OVAL = 4" x 10 1/8"	8"



Material:

- Plenum: Coated Steel
- Pattern Controllers: Extruded Aluminum
- Centre Tee: Extruded Aluminum

Insulation Options:

- AFI - External Aluminum Foil Backed insulation

Notes:

- 2 Slot Diffuser
- 1" (25) Slot Width
- Pattern controllers are field adjustable to create horizontal or vertical air pattern
- For use with 1" (25) flat tee ceiling grid
- Factory tolerance  $\pm 1/32"$  (1)

Finish:

- Blades - B17: Black
- BFS: Black Face Surfaces
- Centre Tee - B12: Standard White

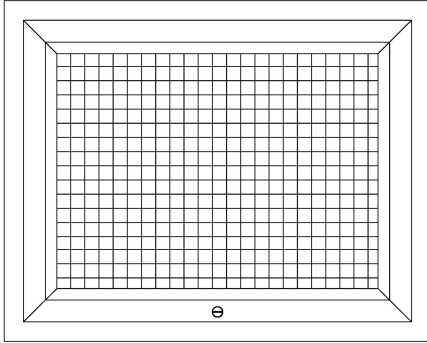
PROJECT: Little Rock West High School  
ENGINEER:  
DESCRIPTION: Insulat T-Bar Supp Diff, Ice-Tong Blades, 1" Slots  
TBDI3100//I/48/2//IMP/4x10.125//AFI/BFS//B12

SUBMITTAL NO: 258602-B  
CUSTOMER: Unknown

SUBMITTAL DATE: 12/21/2023

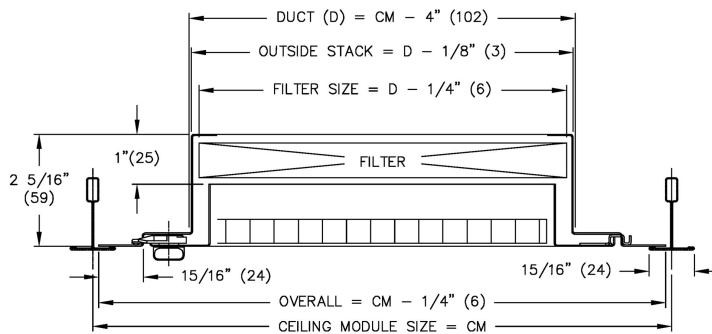


## 80FF Steel Filter Grille with 1/2" x 1/2" x 1/2" Eggcrate Core



**Border:** TB

Lay-In Application T-Bar



### Material:

- Core: Aluminum
- Border: Formed Steel
- Frame: Formed Steel

### Finish:

- B12: Standard White

### Notes:

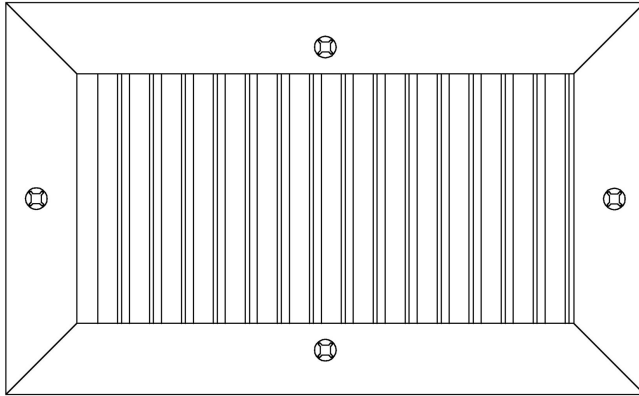
- Filter frame accepts 1" filter
- Filter media by others
- Quarter turn fastener located per factory standard
- Hinge tabs are parallel to the long dimension
- Factory tolerance  $\pm 1/32"$  (1)

**PROJECT:** Little Rock West High School  
**ENGINEER:**  
**DESCRIPTION:** Egg Crate Filter Grille, 1/2"X1/2"X1/2"  
80FF//1/24.000/24.000/TB//20/20/1/HL//B12

**SUBMITTAL NO:** 260769-C  
**CUSTOMER:** Unknown

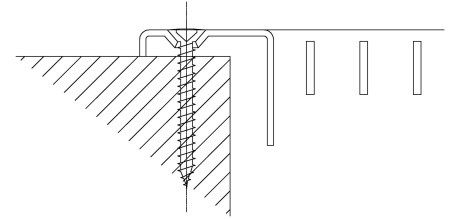
**SUBMITTAL DATE:** 12/21/2023

## 93 Steel Gymnasium Grille – 45° Deflection, 1/2" Blade Spacing



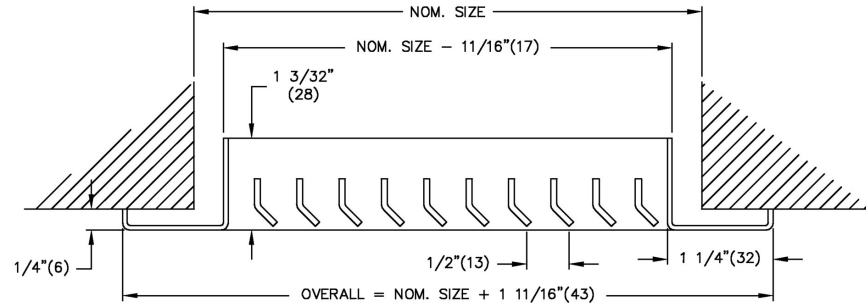
### Fastening:

A: Countersunk screwholes with standard screws



### Border: F

1 1/4"(32) Flat Frame



### Notes:

- Louver blades are parallel to the short dimension
- Louver blades are fixed
- 45° deflection blades on 1/2" centers
- Factory tolerance  $\pm 1/32"$  (1)

### Material:

- Frame: 16 Gauge Steel
- Blades: 14 Gauge Steel
- Mullions: 20 Gauge Steel
- Mullion Pins: 1/8" (3) Steel

### Finish:

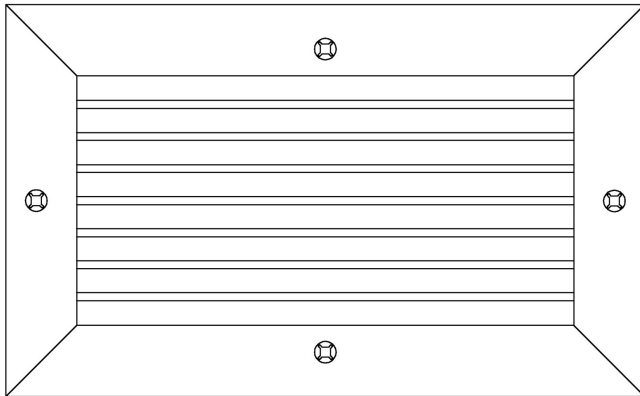
- PC12: Prime Coat

**PROJECT:** Little Rock West High School  
**ENGINEER:**  
**DESCRIPTION:** Steel Gym Grille, 45degree Angle, 1/2" Spacing  
93//1/36.000,42.000,30.000/24.000,42.000,30.000//S///A//PC12

**SUBMITTAL NO:** 260722-A  
**CUSTOMER:** Unknown

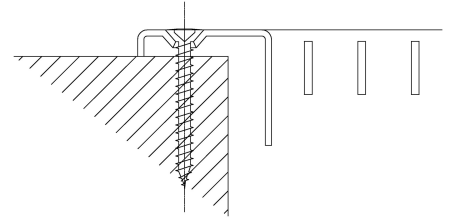
**SUBMITTAL DATE:** 12/21/2023

**90 Steel Gymnasium Grille – 0° Deflection, 3/8" Blade Spacing**



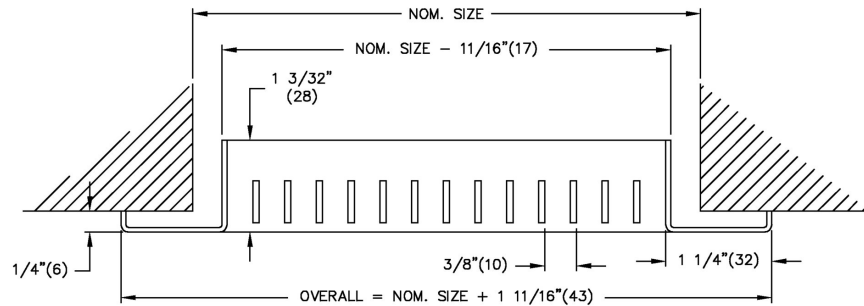
**Fastening:**

A: Countersunk screwholes with standard screws



**Border: F**

1 1/4"(32) Flat Frame



**Notes:**

- Louver blades are parallel to the long dimension
- Louver blades are fixed
- 0° deflection blades on 3/8" centers
- Factory tolerance  $\pm 1/32"$  (1)

**Material:**

- Frame: 16 Gauge Steel
- Blades: 14 Gauge Steel
- Mullions: 20 Gauge Steel
- Mullion Pins: 1/8" (3) Steel

**Finish:**

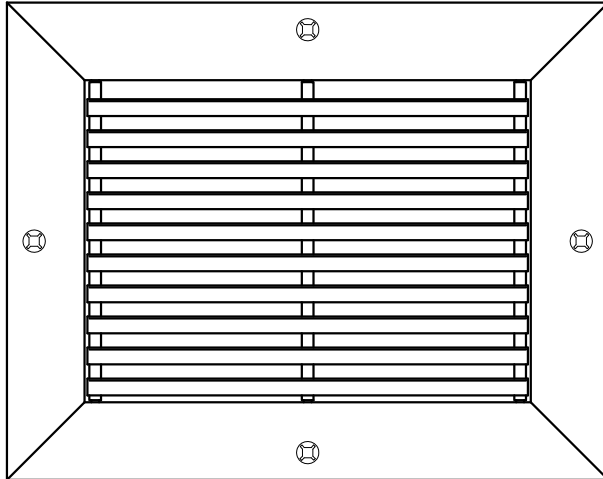
- PC12: Prime Coat

**PROJECT:** Little Rock West High School  
**ENGINEER:**  
**DESCRIPTION:** Steel Gym Grille, 0degree Angle, 3/8" Spacing  
90//1/36.000/20.000/L///A//PC12

**SUBMITTAL NO:** 260722-A  
**CUSTOMER:** Unknown

**SUBMITTAL DATE:** 12/21/2023

**90, 91, 93, 95, 96 STEEL GYMNASIUM GRILLES**



**BLADE ORIENTATION:**

- ☐ L - BLADES PARALLEL TO LONG DIMENSION
- ☐ S - BLADES PARALLEL TO SHORT DIMENSION

**FINISH:**

- ☐ B12 - WHITE POWDER COAT  
(OPTIONAL FINISHES AVAILABLE)

**OPTIONAL DAMPER:**

- ☐ VCS3 - OPPOSED BLADE DAMPER  
COATED STEEL CONSTRUCTION

**MATERIAL:**

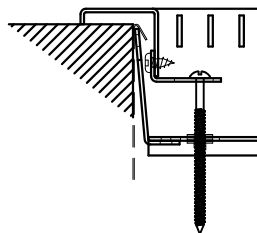
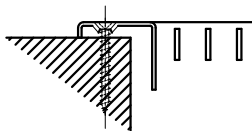
- FRAME - 16 GAUGE STEEL
- BLADES - 14 GAUGE STEEL
- MULLIONS - 20 GAUGE STEEL
- MULLION PINS - 1/8" (3) STEEL

**NOTES:**

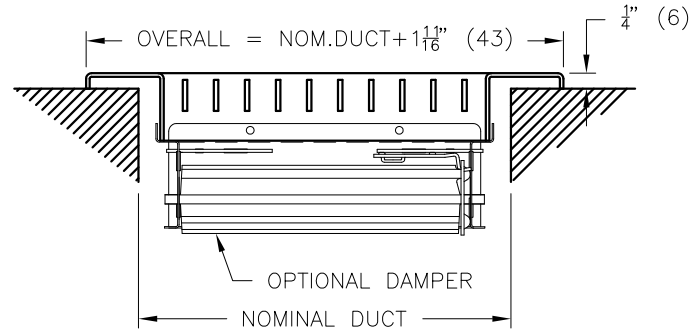
- LOUVER BLADES ARE FIXED
- MIN. SIZE - 6" x 4" (152 x 102)
- MAX. SIZE - 48" x 48" (1219 x 1219)
- OVERSIZED UNITS AVAILABLE, SUPPLIED WITH  
DUCT MOUNTING CHANNEL (SEE SUBMITTAL 219729)

**FASTENING OPTIONS:**

- ☐ A - COUNTERSUNK SCREW FASTENING
- ☐ C - CONCEALED MOUNTING  
(N/A TO 91, 93)  
(MAX 36" [914] WIDTH)

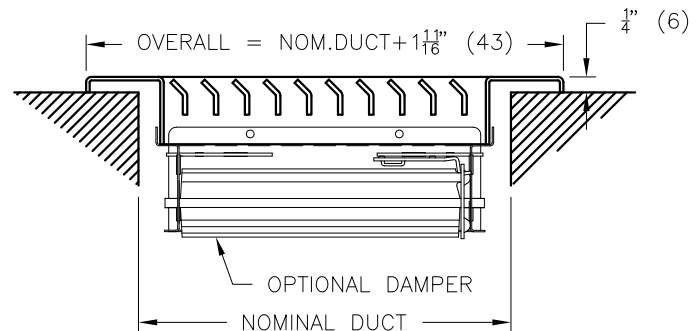


- ☐ O - FASTENING BY OTHERS



**0° DEFLECTION MODELS:**

- ☐ 90 - 3/8" (10) BLADE SPACING
- ☐ 95 - 3/4" (19) BLADE SPACING

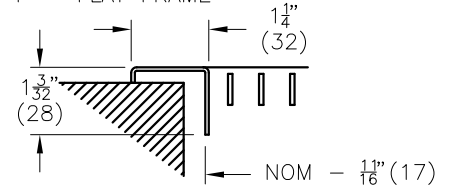


**45° DEFLECTION MODELS:**

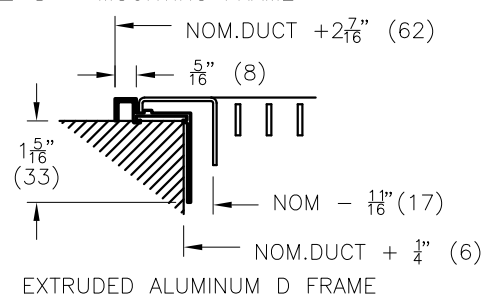
- ☐ 91 - 3/8" (10) BLADE SPACING
- ☐ 93 - 1/2" (13) BLADE SPACING
- ☐ 96 - 3/4" (19) BLADE SPACING

**FRAME OPTIONS:**


- F - FLAT FRAME



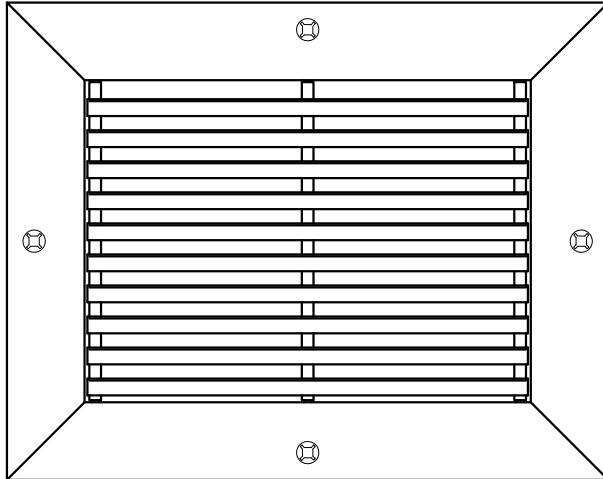
- ☐ D - MOUNTING FRAME



ALL METRIC DIMENSIONS ( ) ARE SOFT CONVERTED. IMPERIAL DIMENSIONS ARE CONVERTED TO METRIC AND ROUNDED TO THE NEAREST MILLIMETER.

<b>PROJECT:</b> Little Rock West High School		<b>price®</b>	
<b>ENGINEER:</b>		 222007	<b>90 SERIES</b> MODELS 90, 91, 93, 95 & 96 STEEL GYMNASIUM RETURN AIR GRILLES
<b>CUSTOMER:</b> Unknown			
<b>SUBMITTAL DATE:</b> 12/21/2023	<b>SPEC. SYMBOL:</b> U.V	2014/07/31	

**90, 91, 93, 95, 96 STEEL GYMNASIUM GRILLES**



**BLADE ORIENTATION:**

- ☐ L - BLADES PARALLEL TO LONG DIMENSION
- ☐ S - BLADES PARALLEL TO SHORT DIMENSION

**FINISH:**

- ☐ B12 - WHITE POWDER COAT  
(OPTIONAL FINISHES AVAILABLE)

**OPTIONAL DAMPER:**

- ☐ VCS3 - OPPOSED BLADE DAMPER  
COATED STEEL CONSTRUCTION

**MATERIAL:**

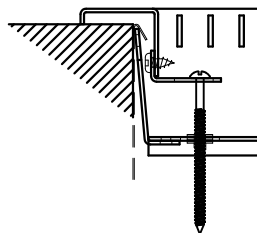
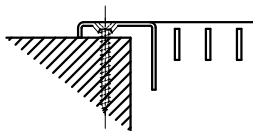
- FRAME - 16 GAUGE STEEL
- BLADES - 14 GAUGE STEEL
- MULLIONS - 20 GAUGE STEEL
- MULLION PINS - 1/8" (3) STEEL

**NOTES:**

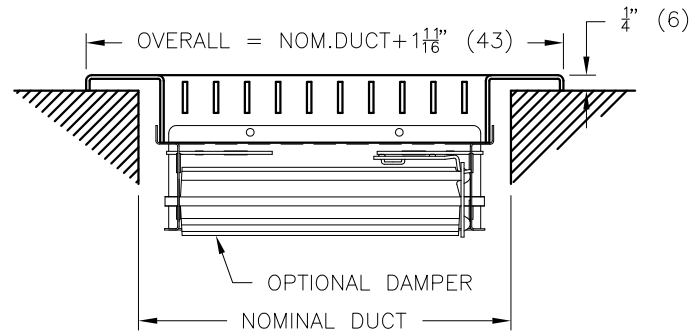
- LOUVER BLADES ARE FIXED
- MIN. SIZE - 6" x 4" (152 x 102)
- MAX. SIZE - 48" x 48" (1219 x 1219)
- OVERSIZED UNITS AVAILABLE, SUPPLIED WITH  
DUCT MOUNTING CHANNEL (SEE SUBMITTAL 219729)

**FASTENING OPTIONS:**

- ☐ A - COUNTERSUNK SCREW FASTENING
- ☐ C - CONCEALED MOUNTING  
(N/A TO 91, 93)  
(MAX 36" [914] WIDTH)

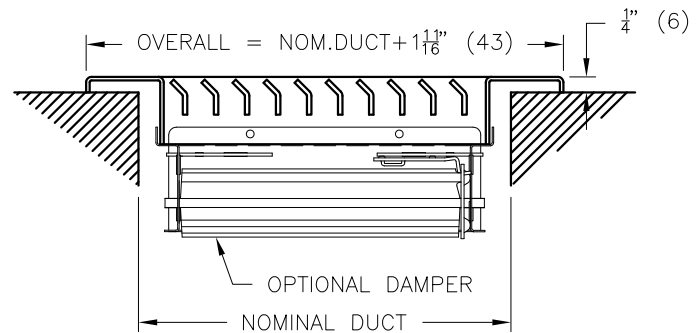


- ☐ O - FASTENING BY OTHERS



**0° DEFLECTION MODELS:**

- ☐ 90 - 3/8" (10) BLADE SPACING
- ☐ 95 - 3/4" (19) BLADE SPACING

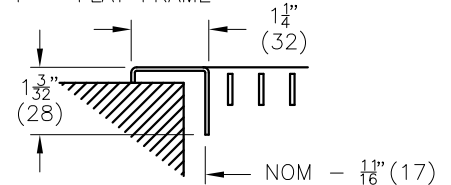


**45° DEFLECTION MODELS:**

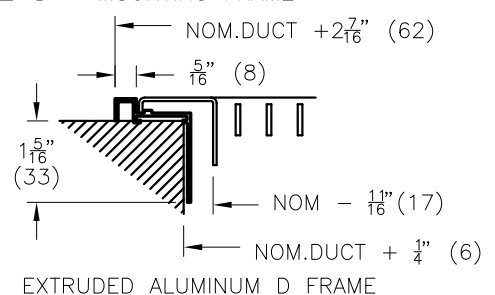
- ☐ 91 - 3/8" (10) BLADE SPACING
- ☐ 93 - 1/2" (13) BLADE SPACING
- ☐ 96 - 3/4" (19) BLADE SPACING

**FRAME OPTIONS:**

- F - FLAT FRAME




- ☐ D - MOUNTING FRAME

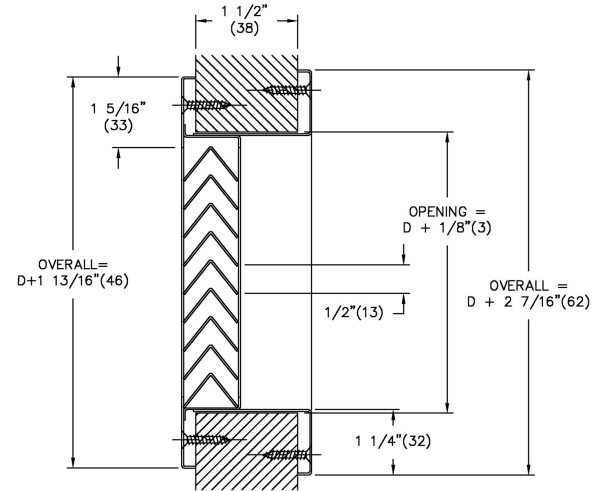
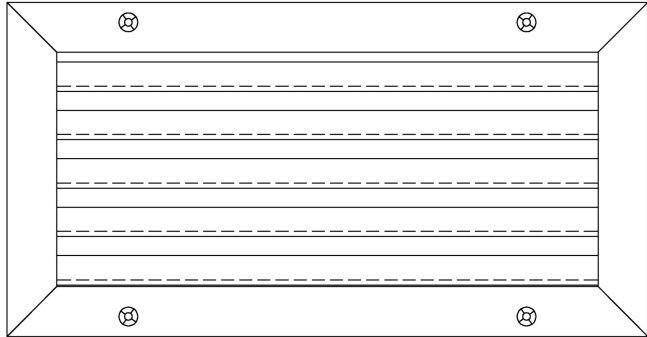


EXTRUDED ALUMINUM D FRAME

ALL METRIC DIMENSIONS ( ) ARE SOFT CONVERTED. IMPERIAL DIMENSIONS ARE CONVERTED TO METRIC AND ROUNDED TO THE NEAREST MILLIMETER.

<b>PROJECT:</b> Little Rock West High School		<b>price<sup>®</sup></b>	
<b>ENGINEER:</b>		 222007	<b>90 SERIES</b> MODELS 90, 91, 93, 95 & 96 STEEL GYMNASIUM RETURN AIR GRILLES
<b>CUSTOMER:</b> Unknown			
<b>SUBMITTAL DATE:</b> 12/21/2023	<b>SPEC. SYMBOL:</b> W Y	2014/07/31	

## STG1 Steel Transfer Grille



### Notes:

- Sightproof core
- Blades on 1/2" (13) centers
- Border BF: Flat border on both sides with countersunk screw hole fastening
- Factory tolerance  $\pm 1/32$ " (1)

### Material:

- Heavy Duty Steel Construction

### Finish:

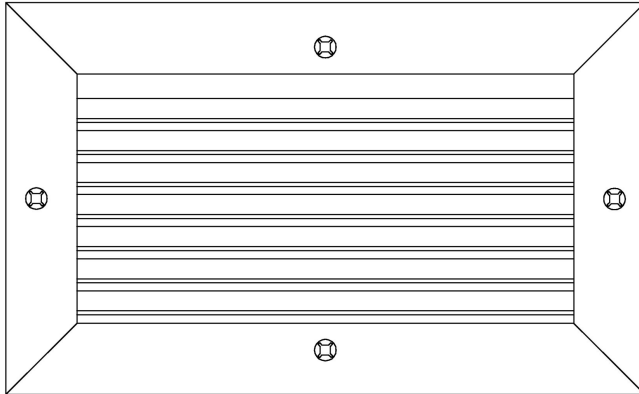
- B12: Standard White

**PROJECT:** Little Rock West High School  
**ENGINEER:**  
**DESCRIPTION:** Steel Transfer/Door Grille - Sightproof  
STG1///16.000/16.000/BF/////////B12

**SUBMITTAL NO:** 261381  
**CUSTOMER:** Unknown

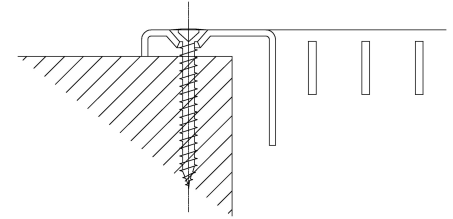
**SUBMITTAL DATE:** 12/21/2023

## 93 Steel Gymnasium Grille – 45° Deflection, 1/2" Blade Spacing



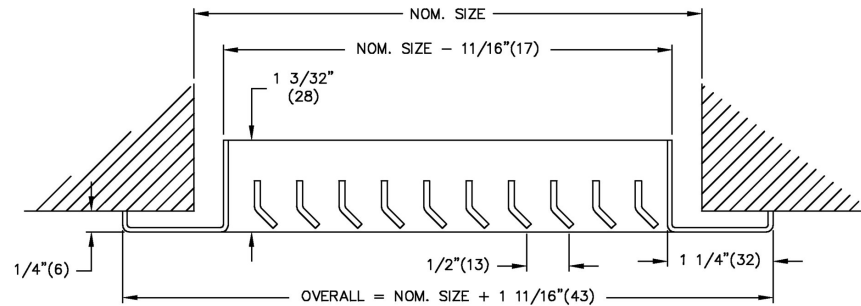
### Fastening:

A: Countersunk screwholes with standard screws



### Border: F

1 1/4"(32) Flat Frame



### Notes:

- Louver blades are parallel to the long dimension
- Louver blades are fixed
- 45° deflection blades on 1/2" centers
- Factory tolerance  $\pm 1/32"$  (1)

### Material:

- Frame: 16 Gauge Steel
- Blades: 14 Gauge Steel
- Mullions: 20 Gauge Steel
- Mullion Pins: 1/8" (3) Steel

### Finish:

- PC12: Prime Coat

**PROJECT:** Little Rock West High School  
**ENGINEER:**  
**DESCRIPTION:** Steel Gym Grille, 45degree Angle, 1/2" Spacing  
93//1/20.000,24.000/16.000//L//A//PC12

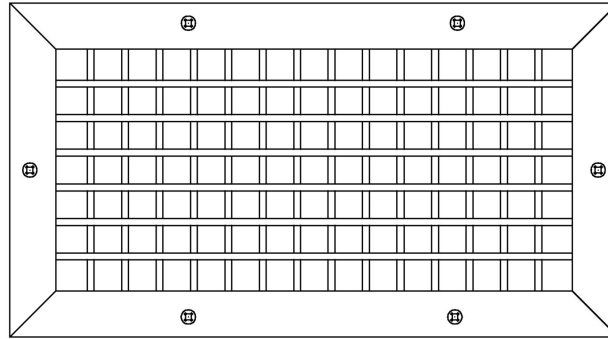
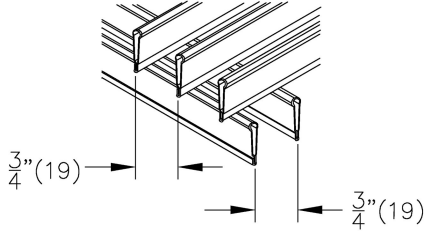
**SUBMITTAL NO:** 260722-A  
**CUSTOMER:** Unknown

**SUBMITTAL DATE:** 12/21/2023

## 520 Louvered Steel Supply Grille – 3/4" Blade Spacing, Double Deflection

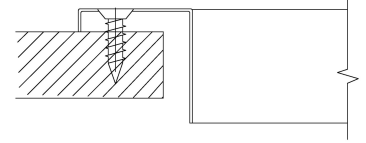
### Core Style:

Double Deflection



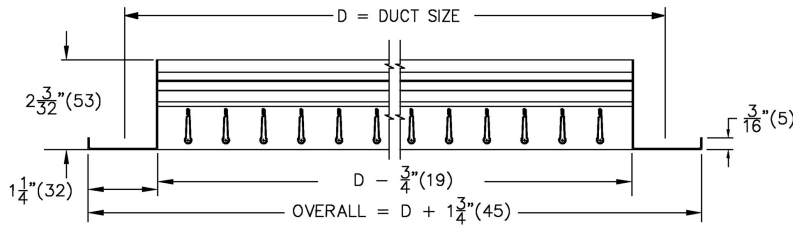
### Fastening:

A: Countersunk Screwholes with Screw



### Border: F

1 1/4" (32) Flat Frame



### Material:

- Steel

### Finish:

- B12 - Standard White

### Notes:

- Front blades parallel to Long dimension
- Individually adjustable roll formed blades on 3/4" (19) centers
- Factory tolerance  $\pm 1/32"$  (1)

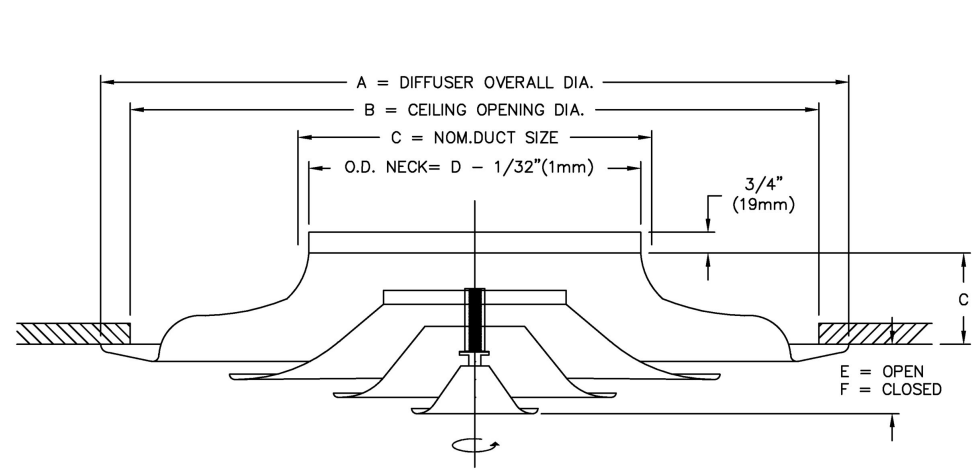
**PROJECT:** Little Rock West High School  
**ENGINEER:**  
**DESCRIPTION:** Louvered Steel Double Deflect Grille, 3/4" Spacing  
520//12.000,16.000/6.000/F/L///A/SW/B12

**SUBMITTAL NO:** 258306  
**CUSTOMER:** Unknown

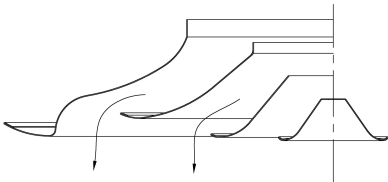
**SUBMITTAL DATE:** 12/21/2023



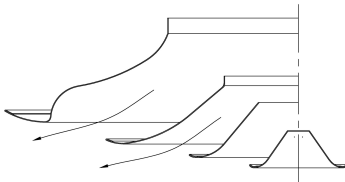
RCDA Steel Round Cone Diffuser, Fully Adjustable



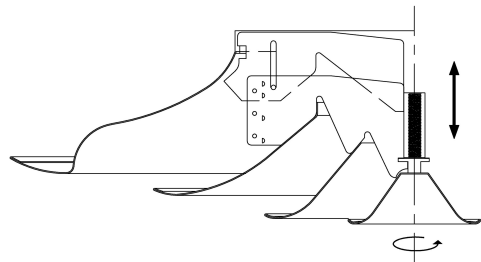
Vertical Airflow



Horizontal Airflow



Detail View:



Notes:

- Air pattern is adjustable from full horizontal to full vertical by turning the small center cone
- Tool free removal of inner cone
- Factory Tolerance: ± 1/32" (1 mm)

Material:

- Heavy Gauge Spun Steel

Finish:

- B12: Standard White

Dimensions- inches						
Inlet Size	A	B	C	D	E	F
10	22 1/2	20	2 5/8	10	2 11/16	1 7/16



Scan for link to additional product information and installation instructions

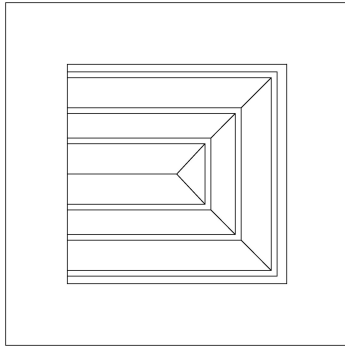
PROJECT: Little Rock West High School  
ENGINEER:  
DESCRIPTION: Round Cone Diffuser - Fully Adjustable, Steel  
RCDA//I/10/////////B12

SUBMITTAL NO: 260677-A  
CUSTOMER: Unknown

SUBMITTAL DATE: 12/21/2023

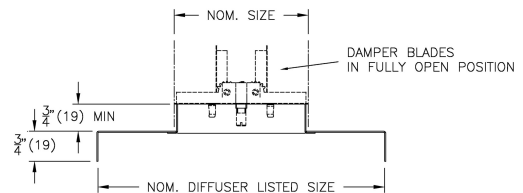
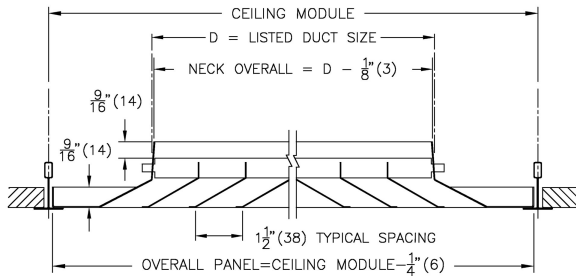
## AMD Aluminum Modular Directional Diffuser

**Core Style:** 3A 3-Way, Style A for Square Inlet Neck



**Border:** 3PA Aluminum T-Bar Panel Lay-In 1" (25)

**Accessory:** SR8E Square to Round Adapter with VCR8E Damper



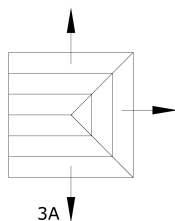
### Notes:

- Cores sized in increments of 3" (76) in both directions
- SR8E Square to Round Adaptor (Shipped mounted) with Butterfly volume control damper shipped loose
- R6 insulation - diffuser backpan only, SR not insulated
- Directional core removable at diffuser face
- Factory tolerance  $\pm 1/32$ " (1)

### Material:

- Aluminum Construction
- Panel: Aluminum
- SR Adapter: Steel
- Damper: Steel

### Plan View:



### Finish:

- B12: Standard White

**PROJECT:** Little Rock West High School  
**ENGINEER:**  
**DESCRIPTION:** Aluminum Louvered Directional Diffuser  
AMD//I/12/12/3PA/3A/24/24/SR8E/10/R6/B12

**SUBMITTAL NO:** 258515-C  
**CUSTOMER:** Unknown

**SUBMITTAL DATE:** 12/21/2023