



Quality People. Building Solutions.

Comfort Systems USA (Arkansas), Inc.
P.O. Box 16620
Little Rock, AR 72231
Phone 501-834-3320
Fax 501-834-5416

Date: 2/21/2024

Return Request: 3/28/2024

Project: Little Rock West High School

Supplier: A/C Specialties

Manufacturer: Greenheck

Submittal: HVAC Fans (Gravity Ventilators)

Submittal Number: 23 34 00-01

Drawing # and Installation: Mechanical Drawings

ARCHITECT

Lewis Architects Engineers
11225 Huron Lane, Suite 104
Little Rock, AR 72211
501-223-9302

ENGINEER

Lewis Architects Engineers
11225 Huron Lane, Suite 104
Little Rock, AR 72211
501-223-9302

GENERAL CONTRACTOR

Baldwin & Shell
1000 W. Capitol Ave.
Little Rock, AR 72201
501-374-8677

MECHANICAL SUBCONTRACTOR

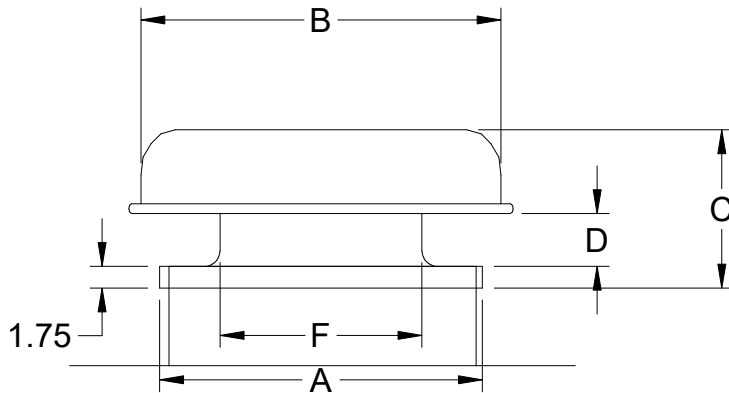
Comfort Systems USA (Arkansas), Inc.
9924 Landers Rd.
N. Little Rock, AR 72117
501-834-3320

Notes:

--

chowell@comfortar.com

9924 Landers Rd.
No. Little Rock, AR 72117



Model: GRSR

Standard Construction Features:

- Aluminum housing.
- Aluminum curb cap with prepunched mounting holes.
- Recommended roof opening dimension is at least 2.5 in. larger than the damper size.

Dimensions

ID#	Tag	Qty	Model	Model Size (in.)	A (in.)	B (in.)	C (in.)	D (in.)	E (in.)	F (in.)	Curb Cap Width (in.)	Curb Cap Length (in.)	Weight (lb)
11-1	GEV-1	1	GRSR-16	16	26	29	12.75	4.25	N/A	16.25	26	26	16

Construction

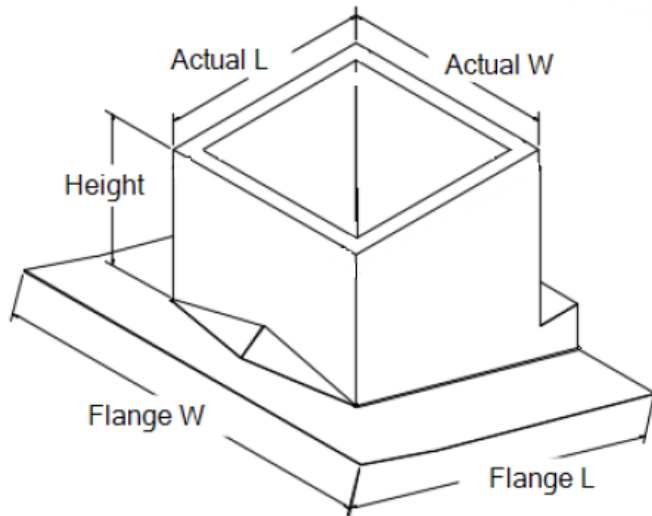
ID#	Flashing Flange	Installation Type	Insect Screen	Birdscreen Material	Unit Material
11-1	No	Non-Ducted	No	Galvanized	Aluminum

Accessories

ID#	Hinged Curb Cap	Curb Seal	Hood Insulation (in.)	Tie Down Points
11-1	No	No	None	No

Roof Curbs

ID#	Model	Height (in.)	Width (in.)	Length (in.)
11-1	GCC	8	26	26



Model: GCC

Metal or Corrugated Roof Curb

Standard Construction Features:

- Roof Curb fits between the building roof and the fan - Constructed of heavy gauge galvanized steel - Designed for pitched roofs - Straight sided without a cant
 - 8 in. mounting flange - 1 in. thick insulation - Height - Available from 8 in. to 42 in. as specified. Notes: - The watershed cricket must be installed on the peak side of the roof.

Please note: Long side and Short side dimensions are positioned differently on the image above.

General

ID#	Tag	Qty	Model	Sizing Method	Undersizing (in.)	Pitch (in.)	Pitch Run	Weight (lb)	Shipped Assembled	Union Made
11-1		1	GCC-26-G8	Nominal	1.25	???	Short Side	27	Yes	No Preference

Dimensions

ID#	Curb Height (in.)	Nominal Outside Width (in.)	Nominal Outside Length (in.)	Actual Outside Width (in.)	Actual Outside Length (in.)
11-1	8	26	26	24.75	24.75

*May not be applicable

Accessories

ID#	Material	Security Bars	Liner	Insulation (in.)	Insulation R Value
11-1	Galvanized	No	No	1	R3.85

Louvers Mill Aluminum Finish

Aluminum in the mill finish state will be commercially smooth and substantially free from blisters, inclusions, voids, slivers and kinks. Slight discontinuity resulting from flow and die lines inherent in the extrusion process will exist. Occasional discontinuities that can be reasonably removed making the surface suitable for finishing operations are acceptable. Although aluminum is naturally resistant to corrosion, its appearance changes as a result of weathering and aging. Aluminum in the mill finish state may also have a non-uniform surface appearance resulting from oil, heat and oxide discoloration inherent in the manufacturing process.

BVE 4 in. Extruded Aluminum

APPLICATION & DESIGN

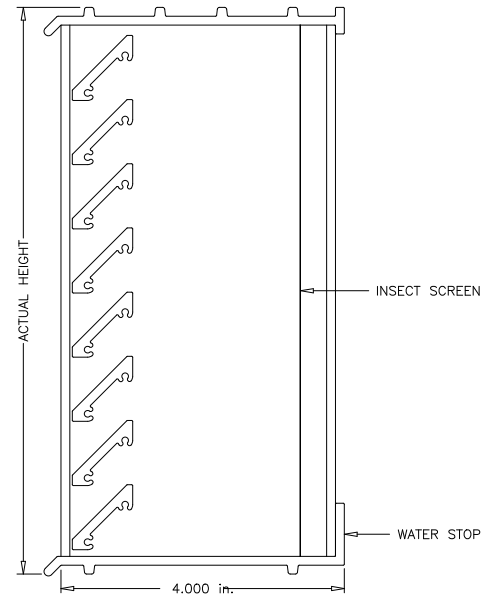
BVE is 4 in. deep with 0.125 in. (3.175 mm) mortar ribs top and bottom and is used primarily for new construction. 45 degree blades overlap for optimum visual screening. Maximum free area is 39 percent. Brick vents provide a permanent means of ventilation for crawl spaces, hung ceilings, incinerator rooms, chimney flues, foundations, pipe spaces and corridors. Extruded construction provides a quality finished appearance. A high water stop at the rear and deep overlapping blades with storm stops provide maximum resistance to rain and weather.

PRODUCT DETAILS

Frame: 4 in. x 0.125 in. Frame Thickness
Blades: 0.125 in. Fixed Blade Thickness

OPTIONS & ACCESSORIES

Finish: Painted
Finish Performance: AAMA 2605
Coating Type: 2Ct 70%Kynar/100%Fluoropolymer
Color: Standard TBS
Insect Screen: Yes
Damper: None
Duct Required: No
Warranty: 1 year Standard Product Warranty
 10 year Standard Finish Warranty

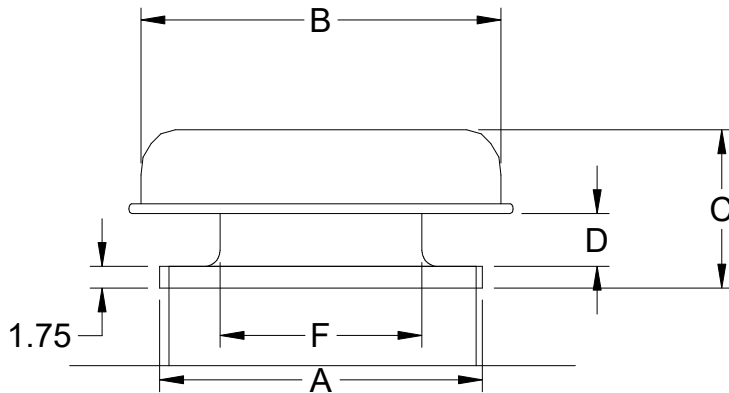


SUMMARY

ID #	TAG	QTY.	W (in.)	H (in.)
12-1	BV-1	1	15.625	7.75
12-2	BV-2	1	15.625	7.75
12-3	BV-3	1	15.625	7.75
12-4	BV-4	1	15.625	7.75

Width is actual. Actual height is 0.25 in. (6.35 mm) higher than entered height due to mortar ribs.

Larger openings may require field assembly of multiple louver panels to make up the overall opening size. Individual louver panels are designed to withstand a 25 PSF wind-load (please consult Greenheck if the louvers must withstand higher wind-loads). Design, materials and installation of structural reinforcement required to adequately support large sections or multiple section assemblies within a large opening are not provided by Greenheck. Unless specifically indicated, the following are NOT included in the quote provided: structural steel, installation hardware (anchors, angle clips, continuous angles, shims, fasteners, inserts, backer rod and sealant), field measuring and/or installation, miscellaneous flashing, trim or enclosures, blank off panels, mullion covers or mullion hardware, hinged frames or removable subframes, custom bird/insect screen, 3-coat, metallic and/or exotic paint finishes, bituminous paints for unlike metals, any applicable taxes, stamped and sealed structural calculations or seismic calculations.



Model: GRSI

Standard Construction Features:

- Aluminum housing.
- Aluminum curb cap with prepunched mounting holes.
- Recommended roof opening dimension is at least 2.5 in. larger than the damper size.

Dimensions

ID#	Tag	Qty	Model	Model Size (in.)	A (in.)	B (in.)	C (in.)	D (in.)	E (in.)	F (in.)	Curb Cap Width (in.)	Curb Cap Length (in.)	Weight (lb)
13-1		1	GRSI-16	16	26	29	12.75	4.25	N/A	16.25	26	26	16

Construction

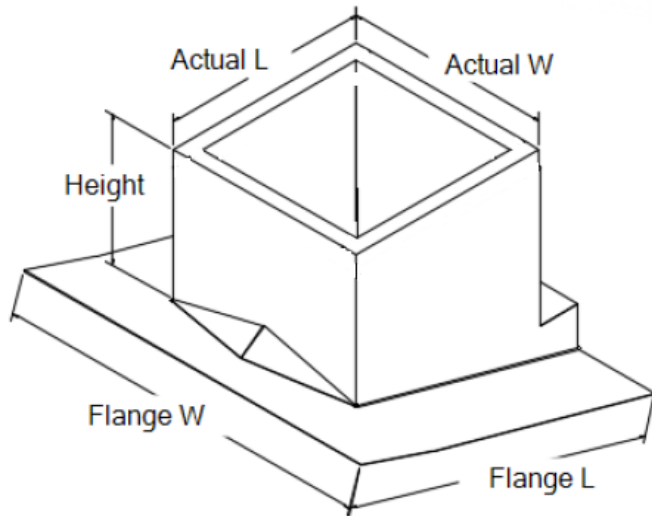
ID#	Flashing Flange	Installation Type	Insect Screen	Birdscreen Material	Unit Material
13-1	No	Ducted	No	Galvanized	Aluminum

Accessories

ID#	Hinged Curb Cap	Curb Seal	Hood Insulation (in.)	Tie Down Points
13-1	No	No	None	No

Roof Curbs

ID#	Model	Height (in.)	Width (in.)	Length (in.)
13-1	GCC	8	26	26



Model: GCC

Metal or Corrugated Roof Curb

Standard Construction Features:

- Roof Curb fits between the building roof and the fan - Constructed of heavy gauge galvanized steel - Designed for pitched roofs - Straight sided without a cant
 - 8 in. mounting flange - 1 in. thick insulation - Height - Available from 8 in. to 42 in. as specified. Notes: - The watershed cricket must be installed on the peak side of the roof.

Please note: Long side and Short side dimensions are positioned differently on the image above.

General

ID#	Tag	Qty	Model	Sizing Method	Undersizing (in.)	Pitch (in.)	Pitch Run	Weight (lb)	Shipped Assembled	Union Made
13-1		1	GCC-26-G8	Nominal	1.25	???	Short Side	27	Yes	No Preference

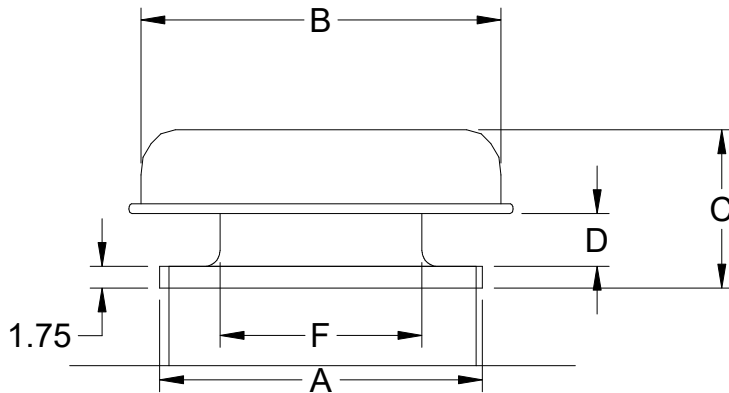
Dimensions

ID#	Curb Height (in.)	Nominal Outside Width (in.)	Nominal Outside Length (in.)	Actual Outside Width (in.)	Actual Outside Length (in.)
13-1	8	26	26	24.75	24.75

*May not be applicable

Accessories

ID#	Material	Security Bars	Liner	Insulation (in.)	Insulation R Value
13-1	Galvanized	No	No	1	R3.85



Model: GRSR

Standard Construction Features:

- Aluminum housing.
- Aluminum curb cap with prepunched mounting holes.
- Recommended roof opening dimension is at least 2.5 in. larger than the damper size.

Dimensions

ID#	Tag	Qty	Model	Model Size (in.)	A (in.)	B (in.)	C (in.)	D (in.)	E (in.)	F (in.)	Curb Cap Width (in.)	Curb Cap Length (in.)	Weight (lb)
14-1		1	GRSR-16	16	26	29	12.75	4.25	N/A	16.25	26	26	16

Construction

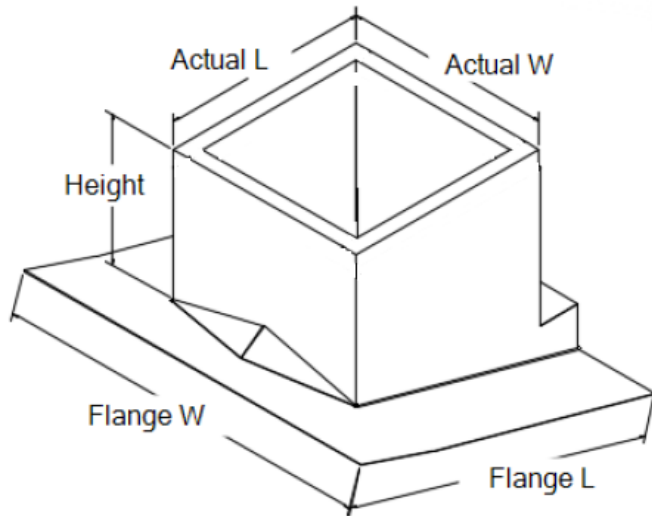
ID#	Flashing Flange	Installation Type	Insect Screen	Birdscreen Material	Unit Material
14-1	No	Ducted	No	Galvanized	Aluminum

Accessories

ID#	Hinged Curb Cap	Curb Seal	Hood Insulation (in.)	Tie Down Points
14-1	No	No	None	No

Roof Curbs

ID#	Model	Height (in.)	Width (in.)	Length (in.)
14-1	GCC	8	26	26



Model: GCC

Metal or Corrugated Roof Curb

Standard Construction Features:

- Roof Curb fits between the building roof and the fan - Constructed of heavy gauge galvanized steel - Designed for pitched roofs - Straight sided without a cant
 - 8 in. mounting flange - 1 in. thick insulation - Height - Available from 8 in. to 42 in. as specified. Notes: - The watershed cricket must be installed on the peak side of the roof.

Please note: Long side and Short side dimensions are positioned differently on the image above.

General

ID#	Tag	Qty	Model	Sizing Method	Undersizing (in.)	Pitch (in.)	Pitch Run	Weight (lb)	Shipped Assembled	Union Made
14-1		1	GCC-26-G8	Nominal	1.25	???	Short Side	27	Yes	No Preference

Dimensions

ID#	Curb Height (in.)	Nominal Outside Width (in.)	Nominal Outside Length (in.)	Actual Outside Width (in.)	Actual Outside Length (in.)
14-1	8	26	26	24.75	24.75

*May not be applicable

Accessories

ID#	Material	Security Bars	Liner	Insulation (in.)	Insulation R Value
14-1	Galvanized	No	No	1	R3.85