

*Quality People. Building Solutions.*

Comfort Systems USA (Arkansas), Inc.  
P.O. Box 16620  
Little Rock, AR 72231  
Phone 501-834-3320  
Fax 501-834-5416

**Date:** 2/21/2024

**Return Request:** 3/28/2024

**Project:** Little Rock West High School

**Supplier:** Fluid Solutions

**Manufacturer:** Hydronic Piping (Underground Pre-Insulated)

**Submittal:** Weld-Tite

**Submittal Number:** 23 21 13-02

**Drawing # and Installation:** Mechanical Drawings

**ARCHITECT**

Lewis Architects Engineers  
11225 Huron Lane, Suite 104  
Little Rock, AR 72211  
501-223-9302

**ENGINEER**

Lewis Architects Engineers  
11225 Huron Lane, Suite 104  
Little Rock, AR 72211  
501-223-9302

**GENERAL CONTRACTOR**

Baldwin & Shell  
1000 W. Capitol Ave.  
Little Rock, AR 72201  
501-374-8677

**MECHANICAL SUBCONTRACTOR**

Comfort Systems USA (Arkansas), Inc.  
9924 Landers Rd.  
N. Little Rock, AR 72117  
501-834-3320

Notes:

--

[chowell@comfortar.com](mailto:chowell@comfortar.com)

9924 Landers Rd.  
No. Little Rock, AR 72117



## **SUBMITTAL DATA**

**Date:** January 18, 2024  
**Project:** Little Rock West High School  
**Contractor:** Comfort Systems USA  
**Engineer:** Lewis Architects Engineers

---

## **UNDERGROUND PREINSULATED PIPING**

\*\*For the CWS&R piping use Weld-Tite S&K Specs, for the HWS&R piping use Weld-Tite.

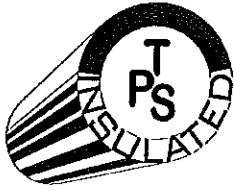
---

**6815 Dewaffelbaker Dr., Maumelle, AR 72113**

*Phone (501) 663-8886 • Fax (501) 663-8738*

*www.fluidsolutionsinc.com*

QTY	UNIT	DESCRIPTION	WT.	WT.
		<b>Chilled Water Supply &amp; Return</b>		
220	ft	8" Weld-Tite(Sch.40,ERW) x 12" PVC(PIP80) x 20'	35.4	7788
10	ea	8" Weld-Tite 90° Ell Field Insulation Kit	8	80
4	ea	8" Weld-Tite Tee Field Insulation Kit	8	32
1400	ft	6" Weld-Tite(Sch.40,ERW) x 10" PVC(PIP80) x 40'	23.86	33404
8	ea	6" Weld-Tite 90° Ell Field Insulation Kit	239	1912
4	ea	6" Weld-Tite 45° Ell Field Insulation Kit	6	24
10	ea	6" Weld-Tite 22-1/2° Ell Field Insulation Kit	6	60
35	ea	6" Weld-Tite Field Joint Insulation Kit	6	210
		<b>Heating Water Supply &amp; Return</b>		
720	ft	6" Weld-Tite(Sch.40,ERW) x 10" PVC(PIP80) x 40'	23.86	17179.2
2	ea	6" Weld-Tite In-Line Anchor x 20'	493	986
4	ea	6" Weld-Tite 90° Riser Ell no/Anchor (4'Sx5'S)	262	1048
2	ea	6" Weld-Tite 22-1/2° Ell w/Anchor (SxS)	95	190
2	ea	6" Weld-Tite Expansion Loop (12'x6')	900	1800
46	ea	6" Weld-Tite Field Joint Insulation Kit	6	276
480	ft	4" Weld-Tite(Sch.40,ERW) x 8" PVC(PIP80) x 40'	14.04	6739.2
2	ea	4" Weld-Tite In-Line Anchor x 20'	292	584
2	ea	4" Weld-Tite 90° Riser Ell no/Anchor (4'Sx5'S)	147	294
2	ea	4" Weld-Tite 90° Ell no/Anchor (SxS)	49	98
2	ea	4" Weld-Tite 22-1/2° Ell w/Anchor (SxS)	60	120
2	ea	4" Weld-Tite 22-1/2° Ell no/Anchor (SxS)	49	98
2	ea	4" Weld-Tite Double 45° Expansion Ell (20'x13'x20')	800	1600
26	ea	4" Weld-Tite Field Joint Insulation Kit	4	104
		Weight	74626.4	



**Thermal Pipe Systems, Inc.**

## **WELD-TITE® PIPING SYSTEM**

FOR LOW TEMPERATURE HOT WATER  
AND CHILLED WATER SERVICE

**SPECIFICATIONS & DRAWINGS BOOKLET**

5205 W. Woodmill Drive, Suite 33  
Wilmington, Delaware 19808  
PHONE: 302-999-1588  
FAX: 302-999-8861

WEBSITE: [www.thermalpipesystems.com](http://www.thermalpipesystems.com)

## WELD-TITE PIPING SYSTEMS SPECIFICATIONS

**WELD-TITE** shall be used where specified for condensate, low temperature hot water, or chilled water service, using a welded joining method. Unless otherwise specified, all pipe, fittings, valves, and accessories shall conform to the requirements of ANSI B31.1, and shall be of the proper type for pressure and temperature of the heating or cooling system.

**STEEL CARRIER PIPE:** Carrier pipe shall be black steel per ASTM A-53 or ASTM A-106, Grade B, **[welded]** or **[seamless]**, schedule 40 (standard weight for 12"-24") or schedule 80 (extra heavy for 10"-24").

**PVC CASING PIPE:** The Polyvinyl Chloride (PVC) casing pipe shall be of virgin PVC resin meeting the minimum classification requirements of ASTM D1784. The thickness shall be as shown on page three.

**RUBBER END SEALS:** Rubber end seals for insulated WELD-TITE shall be a high temperature (HT) heat resistant Ethylene Propylene Diene Monomer (EPDM) molded rubber compound. All surfaces shall be smooth and free of voids.

**POLYURETHANE FOAM INSULATION:** The insulation shall be Polyurethane Foam and shall meet the following specifications:

Type:	Two component urethane
Compressive Strength:	35 psi parallel min at 5% comp
Shrinkage:	None at 70°F
Free Rise Density:	2.0 to 3.0 lbs/cubic foot
Aged "K" (70°F - 72 hrs)	0.160 BTU•inch/hour•°F•ft <sup>2</sup>
Closed Cell Content:	90%

**Insulation concentricity:** Carrier Pipe shall be concentric to casing pipe. The allowable maximum deviation from the centerline of the carrier pipe shall be plus or minus 1/4 inch at the casing center point and plus or minus 1/16 inch at the end seals.

**CASING-TITE SLEEVE:** The Casing-Tite sleeve shall be of virgin PVC Resin meeting classification requirements of ASTM D1784.

**CASING-TITE SEAL:** The Casing-Tite seal shall be a 30-mil high temperature tape.

**FITTINGS:** Fittings shall be field insulated by the contractor using material supplied by Thermal Pipe Systems, Inc. See page 4 for installation method.

**WALL PENETRATION SLEEVES:** Provide where piping passes through masonry or concrete walls, floors, and roofs. Sleeves in outside walls below and above grade, in floor, or in roof slabs, shall be schedule 40 or standard weight coated black steel pipe or as specified by the Design Engineer. Space between the casing OD and the sleeve ID shall never be less than  $\frac{1}{2}$ ". Sleeves shall be held securely in proper position and location during construction. Sleeves shall be of sufficient length to pass through entire thickness of walls or slabs. Sleeves in floor slabs shall extend 2 inches above the finished floor. Refer to typical detail of wall penetration as shown. In existing concrete manholes or building walls, penetrations may be made using the "core drilling" method providing proper care is taken to drill the holes to the size needed and square to the line of the pipe.

**WALL PENETRATION SEALS:** All wall penetrations shall be sealed to prevent water from entering the building or manhole. The sealing material shall be as specified by the engineer.

#### **WELD TITE APPLICATION ENGINEERING**

**PIPE SYSTEM DESIGN:** Standard design techniques and practices for WELD-TITE shall be used. Thermal Pipe Systems, Inc. Engineering Department may provide the detailed design of the piping for each project based on the project documents and drawings provided by the Design Engineer. It is understood that the project specifications and layout drawings will specify the type of service, location of the site, temperature and pressure classifications, soil conditions, general path and elevations of the system, location and design of manholes, known obstacles, size of the carrier pipe, and the maximum permissible heat losses. It is further understood that other requirements such as the type of pipe, the location, size, and capacity of valves, traps, pumps, anchors, controls, expansion devices and special structural elements will be provided by the Design Engineer. The design provided by Thermal Pipe Systems, Inc. and their engineers for the piping will be in accordance with ANSI B31.1 and good engineering practices.

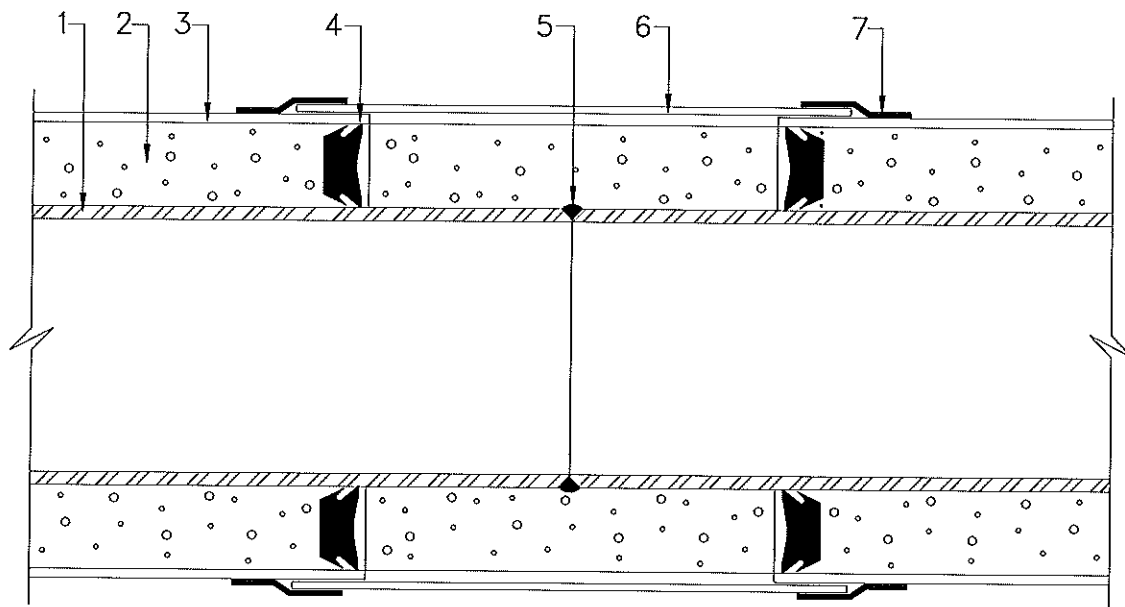
Fluid flow design will be based on Hazen-Williams formula with "C" Factor of 100, or a variation of the Euler formula for water flow.

**INSULATION:** Thickness of insulation for WELD-TITE pipe shall be as shown on page three.

**TEMPERATURE AND PRESSURE:** Weld-Tite piping system and all of its components are designed to operate up to 150psig at 250°F, plus typical surges.

**DIMENSIONS AND WEIGHTS** of insulated WELD-TITE piping are as shown on page three. The WELD-TITE piping may be furnished in 20 ft. and/or 40 ft. lengths.

# PRE-INSULATED WELD-TITE® PIPE



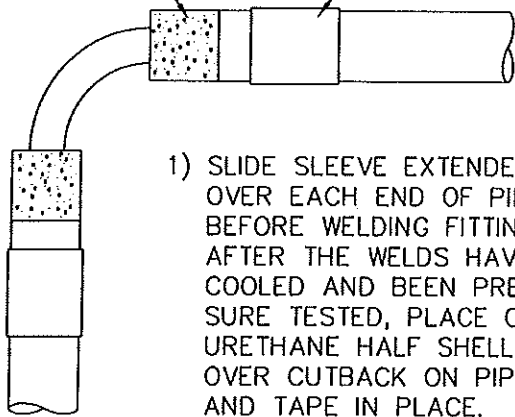
- 1) CARRIER: Black Steel as Specified
- 2) INSULATION: Polyurethane Foam
- 3) CASING: Polyvinyl Chloride (PVC)
- 4) END SEAL: EPDM
- 5) WELD
- 6) CASING-TITE SLEEVE: Polyvinyl Chloride (PVC)
- 7) CASING-TITE SEAL: 30 Mil H.T. Tape

NOM. PIPE SIZE	CARRIER O.D.	CASING O.D.	THICKNESS		WEIGHT (LBS./20 FT.)
			CASING	FOAM	
1 1/2	1.90	4.50	.14	1.16	83
2	2.38	4.50	.14	0.92	101
2 1/2	2.88	6.14	.12	1.51	153
3	3.50	6.14	.12	1.20	188
4	4.50	8.16	.16	1.67	281
5	5.56	8.16	.16	1.14	355
6	6.63	10.20	.20	1.59	478
8	8.63	12.24	.24	1.57	708
10	10.75	14.28	.28	1.49	998
12	12.75	16.00	.25	1.38	1,176
14	14.00	18.70	.37	1.98	1,412
16	16.00	22.05	.43	2.59	1,681
18	18.00	22.05	.43	1.60	1,844
20	20.00	24.80	.48	1.92	2,135
24	24.00	27.95	.55	1.43	2,504

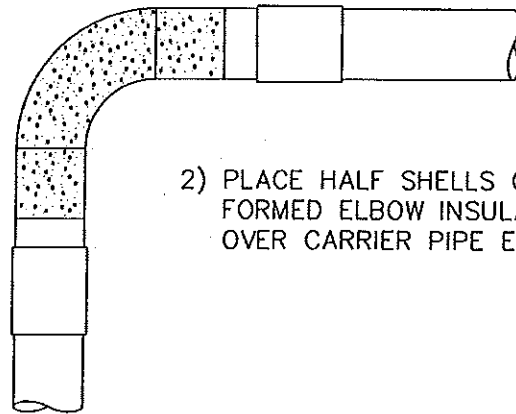
NOTE: All dimensions are in inches unless noted.

CUT URETHANE

SLEEVE EXTENDERS



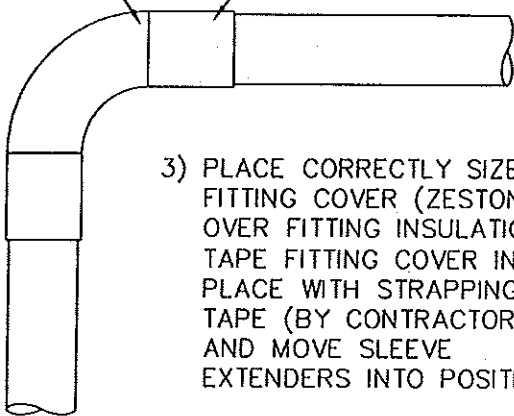
- 1) SLIDE SLEEVE EXTENDERS OVER EACH END OF PIPE BEFORE WELDING FITTING. AFTER THE WELDS HAVE COOLED AND BEEN PRESSURE TESTED, PLACE CUT URETHANE HALF SHELLS OVER CUTBACK ON PIPE AND TAPE IN PLACE.



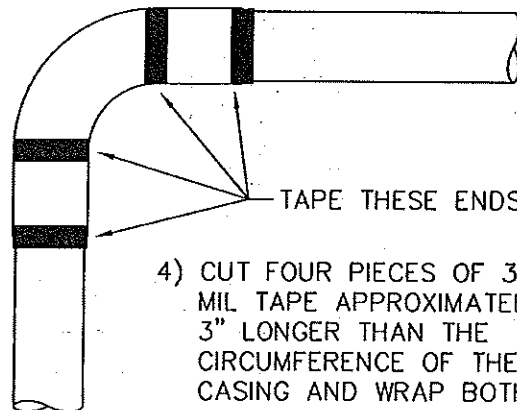
- 2) PLACE HALF SHELLS OF FORMED ELBOW INSULATION OVER CARRIER PIPE ELBOW.

FITTING COVER

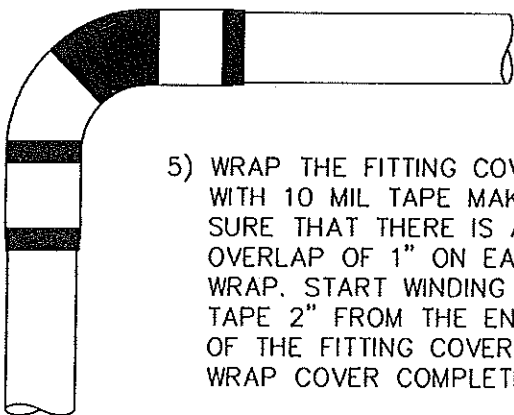
SLEEVE EXTENDERS



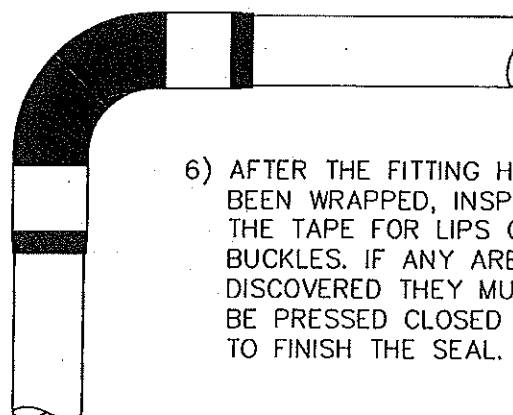
- 3) PLACE CORRECTLY SIZED FITTING COVER (ZESTON) OVER FITTING INSULATION. TAPE FITTING COVER IN PLACE WITH STRAPPING TAPE (BY CONTRACTOR) AND MOVE SLEEVE EXTENDERS INTO POSITION.



- 4) CUT FOUR PIECES OF 30 MIL TAPE APPROXIMATELY 3" LONGER THAN THE CIRCUMFERENCE OF THE CASING AND WRAP BOTH ENDS OF SLEEVE EXTENDERS.



- 5) WRAP THE FITTING COVER WITH 10 MIL TAPE MAKING SURE THAT THERE IS AN OVERLAP OF 1" ON EACH WRAP. START WINDING THE TAPE 2" FROM THE END OF THE FITTING COVER AND WRAP COVER COMPLETELY.



- 6) AFTER THE FITTING HAS BEEN WRAPPED, INSPECT THE TAPE FOR LIPS OR BUCKLES. IF ANY ARE DISCOVERED THEY MUST BE PRESSED CLOSED TO FINISH THE SEAL.



## WELD-TITE INSTALLATION SPECIFICATION

**GENERAL:** Installation of the WELD-TITE piping system shall be done in accordance with the appropriate publications including ANSI B31.1 and the following specifications and instructions. A Thermal Pipe Systems, Inc. field representative may conduct an installation clinic to pre-qualify contract personnel in the proper procedures for the installation.

Piping shall be accurately cut to dimensions established at the construction site and shall be worked into place without springing or forcing, properly clearing all openings and equipment. Excessive cutting or other weakening of structural members to facilitate piping installation shall not be permitted. Pipe ends shall have burrs removed by reaming and shall be installed to permit free expansion and contraction without damage to joints. Good workmanlike procedures shall be followed.

All piping, unless otherwise indicated, shall be pitched with a grade of not less than 1 inch in 40 feet toward the drain points where applicable.

Open ends of pipe lines and equipment shall be properly capped or plugged during installation to keep dirt or other foreign matter out of the system.

## **RECEIVING AND HANDLING SHIPMENTS**

**INSPECTION:** Each shipment shall be inspected upon its arrival at the site. The products are carefully loaded at the plant using methods acceptable to the carrier and it is his responsibility to deliver the pipe in good condition. It is the responsibility of the installation contractor to ascertain whether there has been any loss or damage. The carrier is the contractor's agent. The contractor shall report any pipe or equipment that arrives damaged or is lost in shipment.

Make overall inspection of the load. If load is intact, ordinary inspection while unloading should be enough to make sure that the pipe has arrived in good condition. It is the responsibility of the receiver to make certain that there has been no loss or damage. Note specifically that any end packaging should not show signs of damage. If the load has shifted, or end packing is damaged, then each piece must be carefully inspected for damage. Specifically the ends should be inspected for scars, nicks, etc. Other obvious damage is also cause for rejection. Check total quantities of each item against the tally sheet (pipe, fittings, etc.) Any damaged or missing items are to be noted on the delivery receipt and the receipt returned to the carrier. Notify the carrier immediately and make claim in accordance with the carrier's instructions. Thermal Pipe Systems, Inc. will assist, if necessary, in handling this claim. Do not dispose of damaged material - the carrier will notify you of the procedure to follow.

**UNLOADING INSTRUCTIONS:** The means by which the pipes are unloaded in the field is the decision and responsibility of the installing contractor. The use of forklift type equipment frequently simplifies and speeds up the unloading of larger sizes and usually provides extra protection against damage in handling. To prevent the possibility of the core pipe from shifting within the casing pipe, do not stand a length on one end or raise it vertically. Under no condition should a pipe be dragged along the ground. Do not lift fittings or pipe by inserting a bar, pipe, etc., inside of the core. Damage to the pipe may result. If any pipe is damaged in unloading and handling, mark the damaged area and set it aside. Thermal Pipe Systems, Inc. Representative will determine whether damaged casing can be repaired in the field and will determine exact method for repair and instruct contractor in making repair.

**COLD WEATHER HANDLING:** As the temperature approaches freezing, the flexibility and impact resistance of WELD-TITE piping is reduced. PVC casing becomes hard and brittle in cold weather and will crack more readily if dropped or hit. Therefore, extra care should be used in handling during cold weather. Pipe at the bottom of a stack may become out-of-round due to the weight of material above it. At normal application temperatures, this corrects itself soon after the load is removed. Under freezing conditions, this recovery to full initial roundness may take several hours.

**STORAGE:** Store pipe on dunnage in a flat area. Support the barrel of the casing evenly. Spigot ends should overhang dunnage. Store random lengths separately where they will be readily available. Individual lengths of pipe should be stacked in piles no higher than 5 feet. It should be noted that when PVC pipe is stored outside and exposed to prolonged periods of sunlight, an obvious discoloration of pipe can occur. This coloration is a surface layer of hardened plastic and does not inhibit the long-term properties and performance of the pipe. A method of protecting pipe during long exposures (several months) to sunlight is to cover it with canvas or other opaque material. Do not use clear plastic sheets, and be sure to provide for air circulation under the sheets.

**LOADING TRANSFER TRUCKS:** Use trucks with long bodies so that pipe lengths do not overhang. Make certain truck bed is smooth, without cross-strips, bolt heads, or other protrusions that could damage the pipe. Short body trucks may be used if fitted with racks that properly support the pipe in a horizontal position. The rack should support the pipe with supports spaced every 3 feet or less along the pipe lengths. Pad the contact areas to avoid damage to the pipe.

**EXCAVATION:** Excavation should take into account the need for the thrust blocks at all fittings, which are directly buried in the ground. The trench bottom must give uniform support along the entire length of any pipelines. Where several pipelines are located in a common trench, the trench must be wide enough to maintain the specified distances between adjacent lines, generally a minimum of 6" in pipe sizes up to 6" diameter, and 12" minimum in sizes 8" and larger. The excavation should be in a straight line.

**TRENCHING:** Trenching shall follow the elevations provided by the Design Engineer on the contract drawings. The trench depth should always allow for a minimum cover height of 24" over the top of the casing. Keep excavations free from water during construction. If the contractor determines it is necessary to remove unsuitable material to a depth greater than specified, refill over excavated area to the proper depth with specified bedding material and compact in 6 inch lifts to 95 percent of maximum density in accordance with ASTM D1557, Method D. Excavate and replace soil disturbed and weakened by the contractor's operations or soils permitted to soften from exposure to weather, with bedding material and compact with a plate-type vibratory compactor.

**TRENCH WIDTHS:** The width of the trench at the top of the pipe should be held to the minimum required for efficient and proper installation. The reason for this is to keep the earth load on the pipe as small as possible. The wider the trench at the top of the pipe, the greater the load on the pipe. Note that an increase in trench width above the top of the pipe, by stepping the sides or digging a wider offset trench, does not affect the earth load on the pipe. On the other hand, a trench that is too narrow will make assembly difficult and may reduce the rate and quality of installation. In addition, lack of ample room will limit the capability to properly backfill and tamp around the pipe. Although each job or portion of a job must be considered on an individual basis, as a general rule, the following minimum trench widths at the top of the pipe are recommended: Minimum: one foot greater than the outside diameter of the casing. Where two or more pipes are in the same trench, use the distance between outside casing of the outside pipes plus one foot. Maximum: Use above method for minimum plus two feet.

**DISTRIBUTING PIPE ALONG TRENCH:** Pipe lengths may be strung along the line of the trench so as to minimize additional handling during installation.

**PLACING PIPE IN THE TRENCH:** The WELD-TITE pipe can be hand or mechanically passed into the trench. The latest state and federal safety regulations should be understood and observed. If slings are necessary use only canvas straps, do not use cable or chain slings. A backhoe or boom truck provides an excellent way of lowering the pipe into the trench.

**BEDDING:** Bedding material should be sand or other materials free of sharp objects, heavy clods, boulders or frozen lumps as specified by the Design Engineer. The approved bedding should be used 6" under, around, and over the pipe. Utilize good practices that apply to buried pressure piping.

**ASSEMBLY OF CASING-TITE SLEEVE:** Prior to installing the next section of pipe, the Casing-Tite Sleeve should be installed onto this piece. Simply position the sleeve over the casing and slide it all the way on by hand.

**WELDING:** End covers should remain in place until welding operations are ready to begin. Welding in trenches should be minimized. System sections including fittings and loops should be laid out first and aligned. Welding procedures shall be in accordance with contract specifications, ANSI B31.1, and good welding practices.

**TESTING:** All carrier pipe welds shall be tested in accordance with the contract specifications. If no test is specified, test should consist of a hydrostatic test of 150 psi or 1 ½ times working pressure, whichever is greater, for a period of two hours.

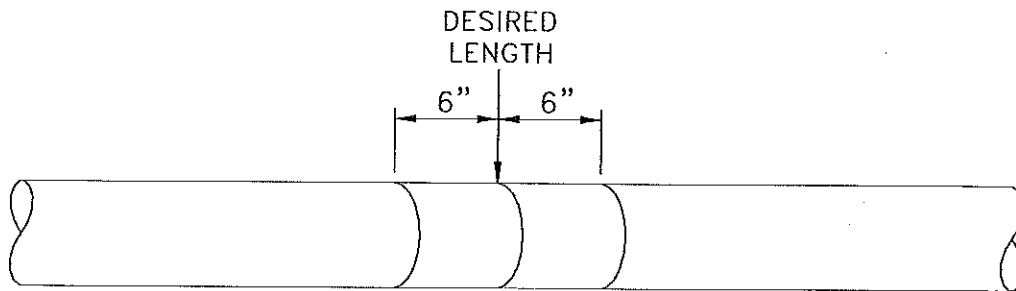
**INSULATION OF JOINTS:** After completion of testing, attach preformed polyurethane insulation onto the joint using 32 gauge stainless steel straps. Push Casing-Tite sleeve over the insulated joint so that it is positioned evenly.

**CLOSURE OF JOINTS:** Apply the factory supplied Casing-Tite seal circumferentially around the seam between the sleeve and the casing pipe. Overlap seal 3 inches.

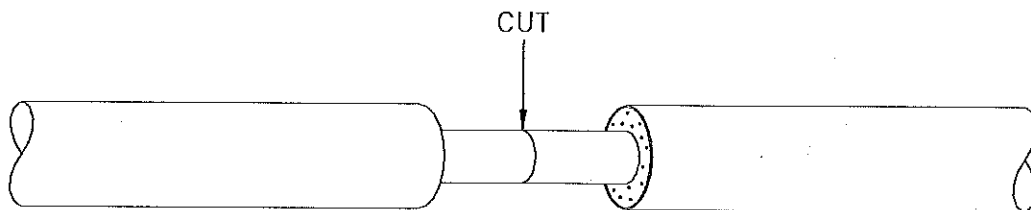
**BACKFILLING:** Backfilling of trenches shall progress as rapidly as construction, testing, and acceptance of work permits. Uniformly compact and grade bottom of trenches. After installation of pipe and bedding material, backfill as follows: place initial backfill in layers to a depth of 12 inches over the top of the initial bedding. Compact the material to a density equivalent to the surrounding undisturbed soil or to 90 percent of maximum density (ASTM D1557, Method D), whichever is greater. Backfill remainder of trench in one-foot lifts and compact to 90 percent maximum density (ASTM D1557, Method D). For trenches excavated in roads, streets, or located under structures, place backfill in 6-inch layers to top of trench and compact each layer to at least 95 percent maximum density (ASTM D1557, Method D).

## FIELD CUTTING PIPE TO A SPECIFIC LENGTH

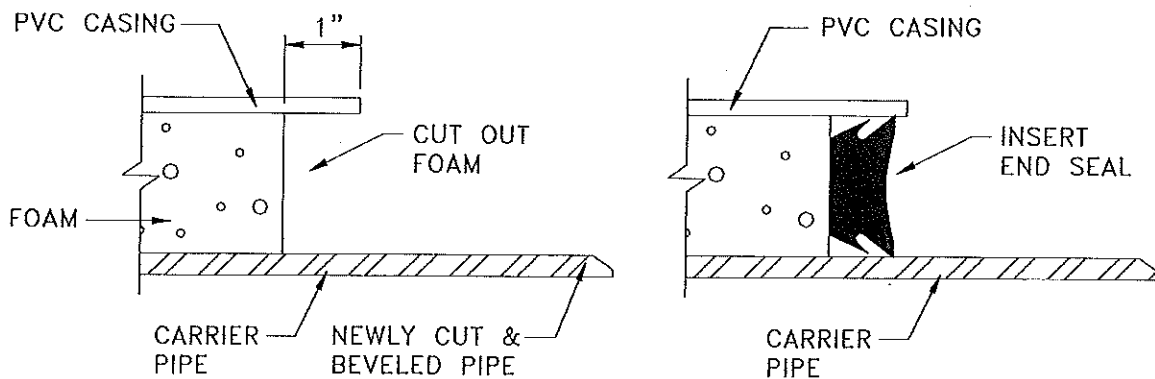
Determine the exact length of carrier pipe needed. Mark the casing at this point. Measure back 6 inches on both sides and mark the casing at these points using a wrap-around.



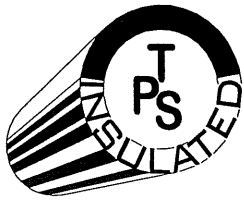
Use a carpenter's handsaw or PVC saw to cut the PVC casing. Remove the PVC casing and cut off the insulation. Be careful not to damage steel carrier pipe during this operation. See illustration below.



Mark, cut, and bevel the steel pipe at the desired length. Make sure cut is square. Remove any burrs and ridges on the pipe. Using a utility knife, remove the insulation between the casing and the carrier pipe one inch in from the face of the PVC casing as shown below. Insert the rubber end seal between the casing and the carrier pipe using the handle of a hammer or screwdriver to push the seal all the way. Silicone caulking may be used in lieu of the rubber end seal.



**START UP PROCEDURE:** Start up procedure shall conform to generally accepted practices and be done in a workman like manner. The line shall be filled slowly from any available low-pressure source. The water can be introduced from lines in service directly through valved connections or by temporary connections to taps made in the new line. If possible, all such connections should be made at the lowest point in the line to avoid air entrapment. All valves and other control points in the line that are open as the line filling begins should be closed gradually to avoid the possibility of water hammer.



# Thermal Pipe Systems, Inc.

## **WELD-TITE® PIPING SYSTEM**

FOR LOW TEMPERATURE HOT WATER  
AND CONDENSATE SERVICE

SPECIFICATIONS & DRAWINGS BOOKLET

5205 W. WOODMILL DRIVE, SUITE 33  
WILMINGTON, DELAWARE 19808  
PHONE: 302-999-1588  
FAX: 302-999-8861

WEBSITE: [www.thermalpipesystems.com](http://www.thermalpipesystems.com)

## WELD-TITE PIPING SYSTEMS SPECIFICATIONS

**WELD-TITE** shall be used where specified for condensate, low temperature hot water, or chilled water service, using a welded joining method. Unless otherwise specified, all pipe, fittings, valves, and accessories shall conform to the requirements of ANSI B31.1, and shall be of the proper type for pressure and temperature of the heating or cooling system.

**STEEL CARRIER PIPE:** Carrier pipe shall be black steel per ASTM A-53 or ASTM A-106, Grade B, [**welded**] or [**seamless**], schedule [**40**] (standard weight for 12"-24") or [**80**] (extra heavy for 10"-24").

**PVC CASING PIPE:** The Polyvinyl Chloride (PVC) casing pipe shall be of virgin PVC resin meeting the minimum classification requirements of ASTM D1784. The thickness shall be as shown on page three.

**RUBBER END SEALS:** Rubber end seals for insulated WELD-TITE shall be a high temperature (HT) heat resistant Ethylene Propylene Diene Monomer (EPDM) molded rubber compound. All surfaces shall be smooth and free of voids.

**POLYURETHANE FOAM INSULATION:** The insulation shall be Polyurethane Foam conforming to ASTM C-591 and shall meet the following specifications:

Type:	Two component urethane
Compressive Strength:	35 psi parallel min at 5% comp
Shrinkage:	None at 70°F
Free Rise Density:	2.0 to 3.0 lbs/cubic foot
Aged "K" (70°F - 72 hrs)	0.160 BTU•inch/hour•°F•ft <sup>2</sup>
Closed Cell Content:	90%

Insulation concentricity: Carrier Pipe shall be concentric to casing pipe. The allowable maximum deviation from the centerline of the carrier pipe shall be plus or minus 1/4 inch at the casing center point and plus or minus 1/16 inch at the end seals.

**CASING-TITE SLEEVE:** The Casing-Tite sleeve shall be of virgin PVC Resin meeting classification requirements of ASTM D1784.

**CASING-TITE SEAL:** The Casing-Tite seal shall be a 30-mil high temperature tape.

**INSULATED FITTINGS:** Fittings may be pre-insulated by Thermal Pipe Systems, Inc. using the same insulation thickness and casing as the pipe. Where necessary, laid-up fiberglass casing will be substituted on all or part of the fitting. End seals on fittings shall be the same as used on the pipe. If specified, fittings may also be field insulated using formed urethane sections and high temperature tape.



**WALL PENETRATION SLEEVES:** Provide where piping passes through masonry or concrete walls, floors, and roofs. Sleeves in outside walls below and above grade, in floor, or in roof slabs, shall be schedule 40 or standard weight coated black steel pipe or as specified by the Design Engineer. Space between the casing OD and the sleeve ID shall never be less than  $\frac{1}{2}$ ". Sleeves shall be held securely in proper position and location during construction. Sleeves shall be of sufficient length to pass through entire thickness of walls or slabs. Sleeves in floor slabs shall extend 2 inches above the finished floor. Refer to typical detail of wall penetration as shown. In existing concrete manholes or building walls, penetrations may be made using the "core drilling" method providing proper care is taken to drill the holes to the size needed and square to the line of the pipe.

**WALL PENETRATION SEALS:** All wall penetrations shall be sealed to prevent water from entering the building or manhole. The sealing material shall be as specified by the engineer.

#### **WELD TITE APPLICATION ENGINEERING**

**PIPE SYSTEM DESIGN:** Standard design techniques and practices for WELD-TITE shall be used. Thermal Pipe Systems, Inc. Engineering Department may provide the detailed design of the piping for each project based on the project documents and drawings provided by the Design Engineer. It is understood that the project specifications and layout drawings will specify the type of service, location of the site, temperature and pressure classifications, soil conditions, general path and elevations of the system, location and design of manholes, known obstacles, size of the carrier pipe, and the maximum permissible heat losses. It is further understood that other requirements such as the type of pipe, the location, size, and capacity of valves, traps, pumps, anchors, controls, expansion devices and special structural elements will be provided by the Design Engineer. The design provided by Thermal Pipe Systems, Inc. and their engineers for the piping will be in accordance with ANSI B31.1 and good engineering practices.

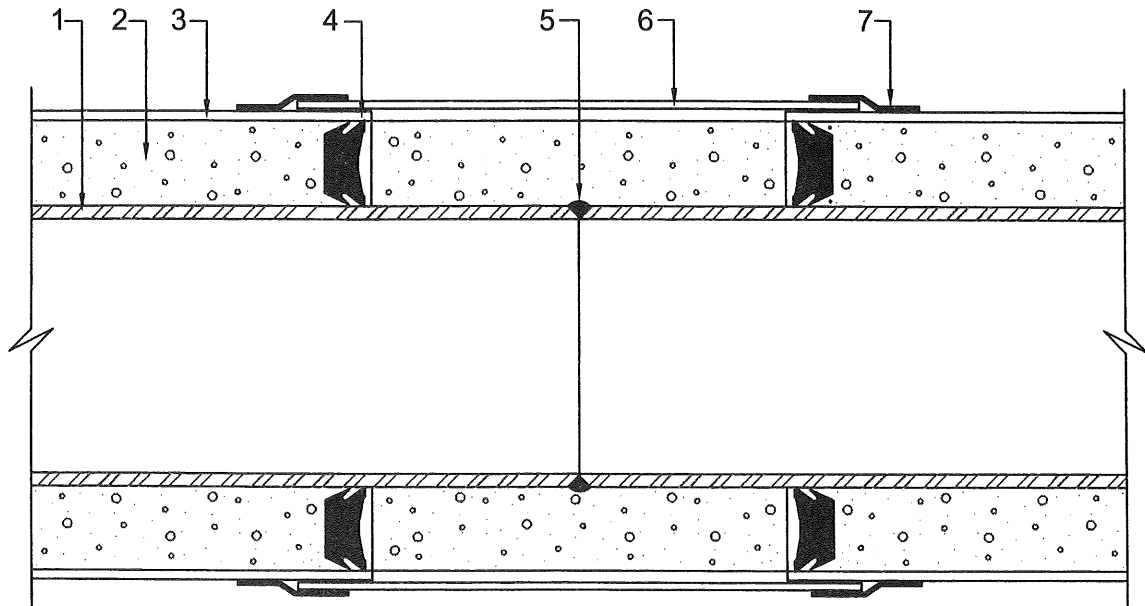
Fluid flow design will be based on Hazen-Williams formula with "C" Factor of 100, or a variation of the Euler formula for water flow.

**INSULATION:** Thickness of insulation for WELD-TITE pipe shall be as shown on page three.

**TEMPERATURE AND PRESSURE:** Weld-Tite piping system and all of its components are designed to operate up to 150psig at 250°F, plus typical surges.

**DIMENSIONS AND WEIGHTS** of insulated WELD-TITE piping are as shown on page three. The WELD-TITE piping may be furnished in 20 ft. and/or 40 ft. lengths.

# PRE-INSULATED WELD-TITE® PIPE



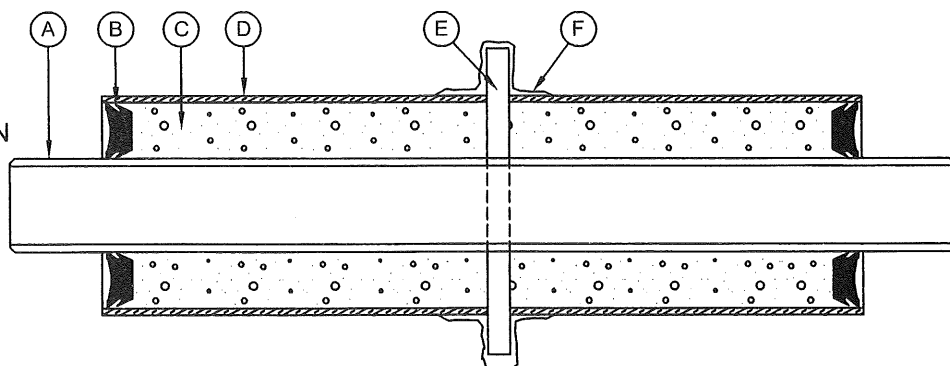
- 1) CARRIER: Black Steel as Specified
- 2) INSULATION: Polyurethane Foam
- 3) CASING: Polyvinyl Chloride (PVC)
- 4) END SEAL: EPDM
- 5) WELD
- 6) CASING-TITE SLEEVE: Polyvinyl Chloride (PVC)
- 7) CASING-TITE SEAL: 30 Mil H.T. Tape

NOM. PIPE SIZE	CARRIER O.D.	CASING O.D.	THICKNESS		WEIGHT (LBS./20 FT.)
			CASING	FOAM	
1 1/2	1.90	4.50	.14	1.16	83
2	2.38	4.50	.14	0.92	101
2 1/2	2.88	6.14	.12	1.51	153
3	3.50	6.14	.12	1.20	188
4	4.50	8.16	.16	1.67	281
5	5.56	8.16	.16	1.14	355
6	6.63	10.20	.20	1.59	478
8	8.63	12.24	.24	1.57	708
10	10.75	14.28	.28	1.49	998
12	12.75	16.00	.25	1.38	1,176
14	14.00	18.70	.37	1.98	1,412
16	16.00	22.05	.43	2.59	1,681
18	18.00	22.05	.43	1.60	1,844
20	20.00	24.80	.48	1.92	2,135
24	24.00	27.95	.55	1.43	2,504

NOTE: All dimensions are in inches unless noted.

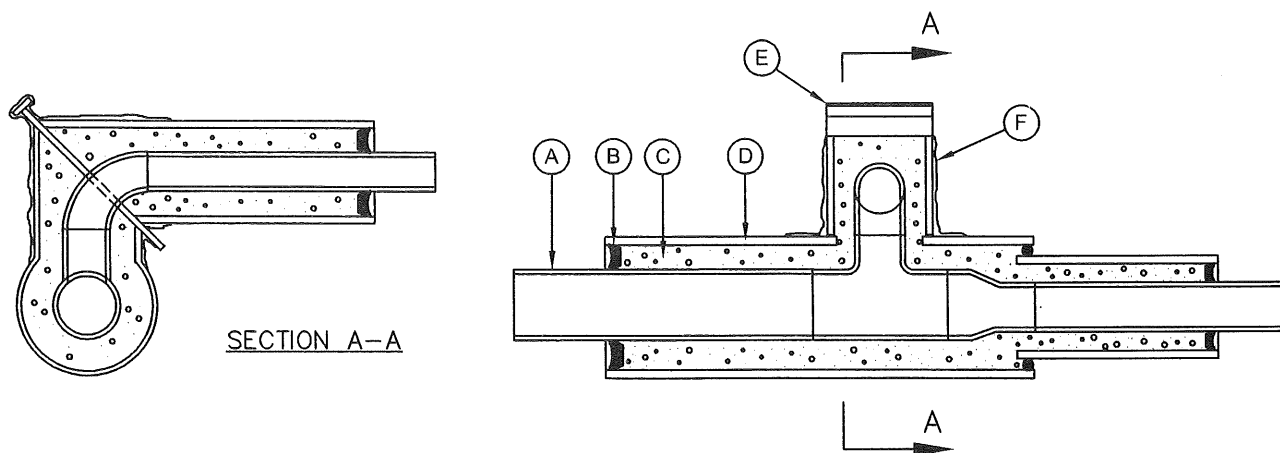
# PRE-INSULATED WELD-TITE® PIPE

- (A) STEEL CARRIER PIPE
- (B) END SEAL
- (C) POLYURETHANE INSULATION
- (D) PVC CASING
- (E) ANCHOR PLATE
- (F) FRP OVERWRAP



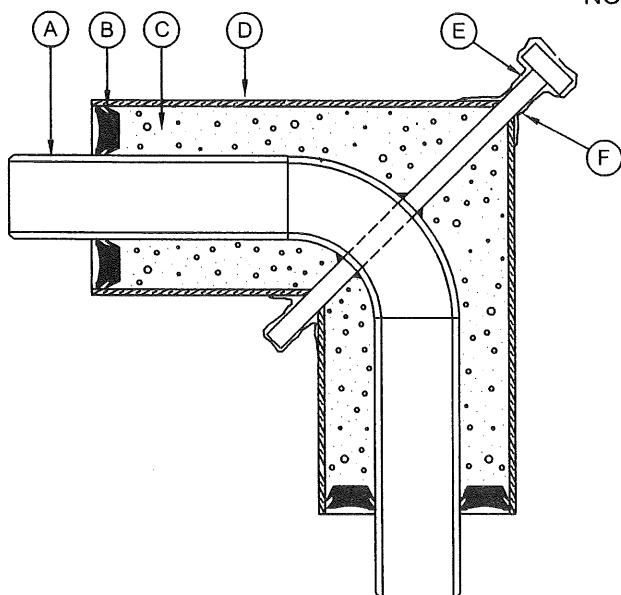
## MID-POINT ANCHOR

NO SCALE



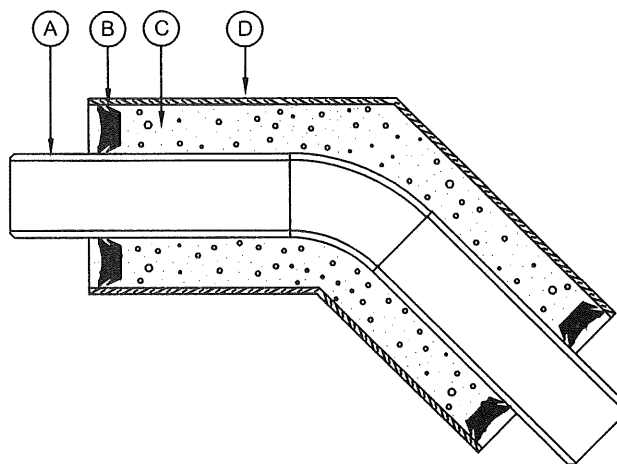
## CROSSOVER TEE

NO SCALE



## 90° ELBOW WITH ANCHOR

NO SCALE

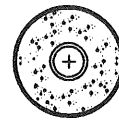


## 45° ELBOW WITHOUT ANCHOR

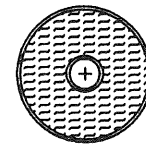
NO SCALE

# PRE-INSULATED WELD-TITE® PIPE

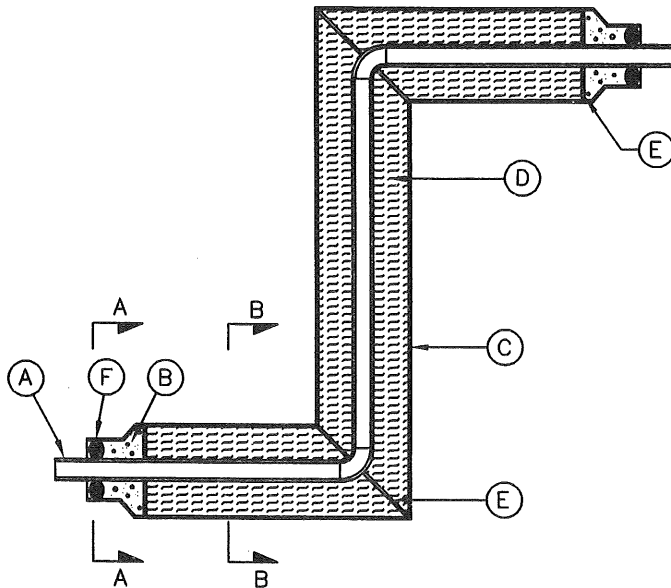
- (A) STEEL CARRIER PIPE
- (B) POLYURETHANE INSULATION
- (C) PVC CASING
- (D) MINERAL WOOL OR ECOTHERM INSULATION
- (E) GUIDE
- (F) END SEAL



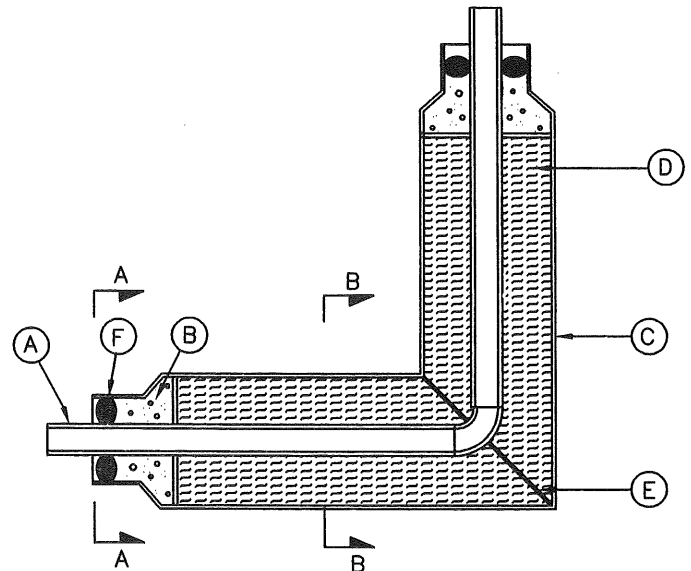
SECTION A-A



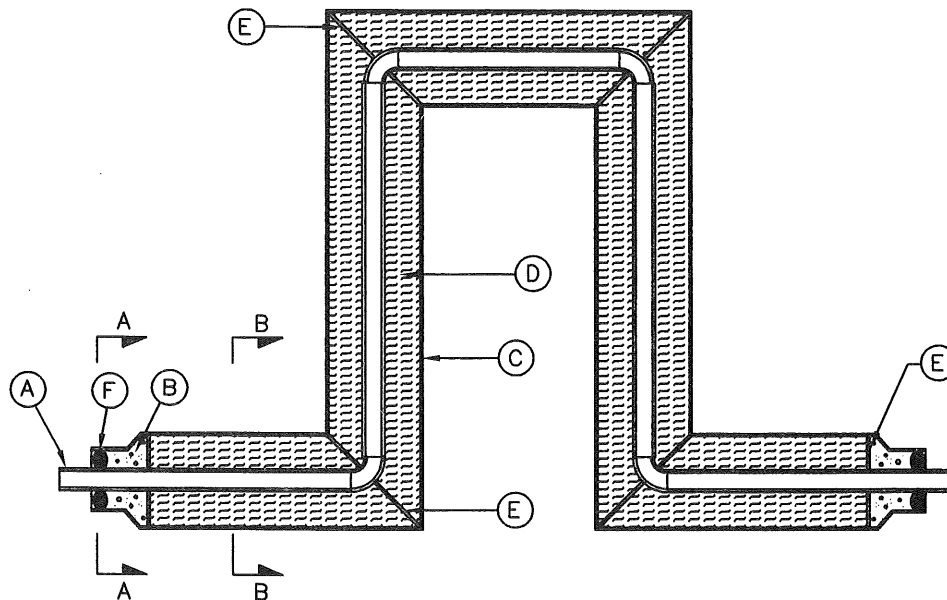
SECTION B-B



EXPANSION 'Z' BEND DETAIL  
NO SCALE



EXPANSION ELBOW DETAIL  
NO SCALE



EXPANSION LOOP DETAIL  
NO SCALE

## **WELD-TITE INSTALLATION SPECIFICATION**

**GENERAL:** Installation of the WELD-TITE piping system shall be done in accordance with the appropriate publications including ANSI B31.1 and the following specifications and instructions. A Thermal Pipe Systems, Inc. field representative may conduct an installation clinic to pre-qualify contract personnel in the proper procedures for the installation.

Piping shall be accurately cut to dimensions established at the construction site and shall be worked into place without springing or forcing, properly clearing all openings and equipment. Excessive cutting or other weakening of structural members to facilitate piping installation shall not be permitted. Pipe ends shall have burrs removed by reaming and shall be installed to permit free expansion and contraction without damage to joints. Good workmanlike procedures shall be followed.

All piping, unless otherwise indicated, shall be pitched with a grade of not less than 1 inch in 40 feet toward the drain points where applicable.

Open ends of pipe lines and equipment shall be properly capped or plugged during installation to keep dirt or other foreign matter out of the system.

### **RECEIVING AND HANDLING SHIPMENTS**

**INSPECTION:** Each shipment shall be inspected upon its arrival at the site. The products are carefully loaded at the plant using methods acceptable to the carrier and it is his responsibility to deliver the pipe in good condition. It is the responsibility of the installation contractor to ascertain whether there has been any loss or damage. The carrier is the contractor's agent. The contractor shall report any pipe or equipment that arrives damaged or is lost in shipment.

Make overall inspection of the load. If load is intact, ordinary inspection while unloading should be enough to make sure that the pipe has arrived in good condition. It is the responsibility of the receiver to make certain that there has been no loss or damage. Note specifically that any end packaging should not show signs of damage. If the load has shifted, or end packing is damaged, then each piece must be carefully inspected for damage. Specifically the ends should be inspected for scars, nicks, etc. Other obvious damage is also cause for rejection. Check total quantities of each item against the tally sheet (pipe, fittings, etc.) Any damaged or missing items are to be noted on the delivery receipt and the receipt returned to the carrier. Notify the carrier immediately and make claim in accordance with the carrier's instructions. Thermal Pipe Systems, Inc. will assist, if necessary, in handling this

claim. Do not dispose of damaged material - the carrier will notify you of the procedure to follow.

**UNLOADING INSTRUCTIONS:** The means by which the pipes are unloaded in the field is the decision and responsibility of the installing contractor. The use of forklift type equipment frequently simplifies and speeds up the unloading of larger sizes and usually provides extra protection against damage in handling. To prevent the possibility of the core pipe from shifting within the casing pipe, do not stand a length on one end or raise it vertically. Under no condition should a pipe be dragged along the ground. Do not lift fittings or pipe by inserting a bar, pipe, etc., inside of the core. Damage to the pipe may result. If any pipe is damaged in unloading and handling, mark the damaged area and set it aside. Thermal Pipe Systems, Inc. Representative will determine whether damaged casing can be repaired in the field and will determine exact method for repair and instruct contractor in making repair.

**COLD WEATHER HANDLING:** As the temperature approaches freezing, the flexibility and impact resistance of WELD-TITE piping is reduced. PVC casing becomes hard and brittle in cold weather and will crack more readily if dropped or hit. Therefore, extra care should be used in handling during cold weather. Pipe at the bottom of a stack may become out-of-round due to the weight of material above it. At normal application temperatures, this corrects itself soon after the load is removed. Under freezing conditions, this recovery to full initial roundness may take several hours.

**STORAGE:** Store pipe on dunnage in a flat area. Support the barrel of the casing evenly. Spigot ends should overhang dunnage. Store random lengths separately where they will be readily available. Individual lengths of pipe should be stacked in piles no higher than 5 feet. It should be noted that when PVC pipe is stored outside and exposed to prolonged periods of sunlight, an obvious discoloration of pipe can occur. This coloration is a surface layer of hardened plastic and does not inhibit the long-term properties and performance of the pipe. A method of protecting pipe during long exposures (several months) to sunlight is to cover it with canvas or other opaque material. Do not use clear plastic sheets, and be sure to provide for air circulation under the sheets.

**LOADING TRANSFER TRUCKS:** Use trucks with long bodies so that pipe lengths do not overhang. Make certain truck bed is smooth, without cross-strips, bolt heads, or other protrusions that could damage the pipe. Short body trucks may be used if fitted with racks that properly support the pipe in a horizontal position. The rack should support the pipe with supports spaced every 3 feet or less along the pipe lengths. Pad the contact areas to avoid damage to the pipe.

**EXCAVATION:** Excavation should take into account the need for the thrust blocks at all fittings, which are directly buried in the ground. The trench bottom must give uniform support along the entire length of any pipelines. Where several pipelines are located in a common trench, the trench must be wide enough to maintain the specified distances between adjacent lines, generally a minimum of 6" in pipe sizes up to 6" diameter, and 12" minimum in sizes 8" and larger. The excavation should be in a straight line.

**TRENCHING:** Trenching shall follow the elevations provided by the Design Engineer on the contract drawings. The trench depth should always allow for a minimum cover height of 24" over the top of the casing. Keep excavations free from water during construction. If the contractor determines it is necessary to remove unsuitable material to a depth greater than specified, refill over excavated area to the proper depth with specified bedding material and compact in 6 inch lifts to 95 percent of maximum density in accordance with ASTM D1557, Method D. Excavate and replace soil disturbed and weakened by the contractor's operations or soils permitted to soften from exposure to weather, with bedding material and compact with a plate-type vibratory compactor.

**TRENCH WIDTHS:** The width of the trench at the top of the pipe should be held to the minimum required for efficient and proper installation. The reason for this is to keep the earth load on the pipe as small as possible. The wider the trench at the top of the pipe, the greater the load on the pipe. Note that an increase in trench width above the top of the pipe, by stepping the sides or digging a wider offset trench, does not affect the earth load on the pipe. On the other hand, a trench that is too narrow will make assembly difficult and may reduce the rate and quality of installation. In addition, lack of ample room will limit the capability to properly backfill and tamp around the pipe. Although each job or portion of a job must be considered on an individual basis, as a general rule, the following minimum trench widths at the top of the pipe are recommended: Minimum: one foot greater than the outside diameter of the casing. Where two or more pipes are in the same trench, use the distance between outside casing of the outside pipes plus one foot. Maximum: Use above method for minimum plus two feet.

**DISTRIBUTING PIPE ALONG TRENCH:** Pipe lengths may be strung along the line of the trench so as to minimize additional handling during installation.

**PLACING PIPE IN THE TRENCH:** The WELD-TITE pipe can be hand or mechanically passed into the trench. The latest state and federal safety regulations should be understood and observed. If slings are necessary use only canvas straps, do not use cable or chain slings. A backhoe or boom truck provides an excellent way of lowering the pipe into the trench.

**BEDDING:** Bedding material should be sand or other materials free of sharp objects, heavy clods, boulders or frozen lumps as specified by the Design Engineer. The approved bedding should be used 6" under, around, and over the pipe. Utilize good practices that apply to buried pressure piping.

**ASSEMBLY OF CASING-TITE SLEEVE:** Prior to installing the next section of pipe, the Casing-Tite Sleeve should be installed onto this piece. Simply position the sleeve over the casing and slide it all the way on by hand.

**WELDING:** End covers should remain in place until welding operations are ready to begin. Welding in trenches should be minimized. System sections including fittings and loops should be laid out first and aligned. Welding procedures shall be in accordance with contract specifications, ANSI B31.1, and good welding practices.

**TESTING:** All carrier pipe welds shall be tested in accordance with the contract specifications. If no test is specified, test should consist of a hydrostatic test of 150 psi or  $1\frac{1}{2}$  times working pressure, whichever is greater, for a period of two hours.

**INSULATION OF JOINTS:** After completion of testing, attach preformed polyurethane insulation onto the joint using 32 gauge stainless steel straps. Push Casing-Tite sleeve over the insulated joint so that it is positioned evenly.

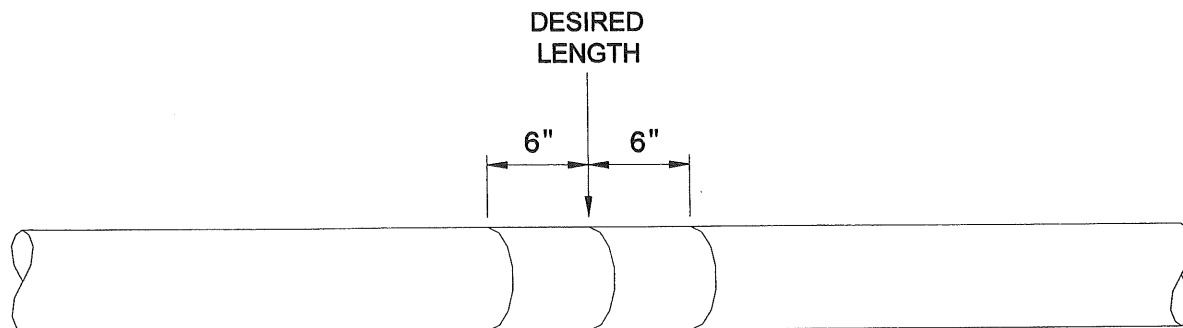
**CLOSURE OF JOINTS:** Apply the factory supplied Casing-Tite seal circumferentially around the seam between the sleeve and the casing pipe. Overlap seal 3 inches.

**BACKFILLING:** Backfilling of trenches shall progress as rapidly as construction, testing, and acceptance of work permits. Uniformly compact and grade bottom of trenches. After installation of pipe and bedding material, backfill as follows: place initial backfill in layers to a depth of 12 inches over the top of the initial bedding. Compact the material to a density equivalent to the surrounding undisturbed soil or to 90 percent of maximum density (ASTM D1557, Method D), whichever is greater. Backfill remainder of trench in one-foot lifts and compact to 90 percent maximum density (ASTM D1557, Method D). For trenches excavated in roads, streets, or located under structures, place backfill in 6-inch layers to top of trench and compact each layer to at least 95 percent maximum density (ASTM D1557, Method D).

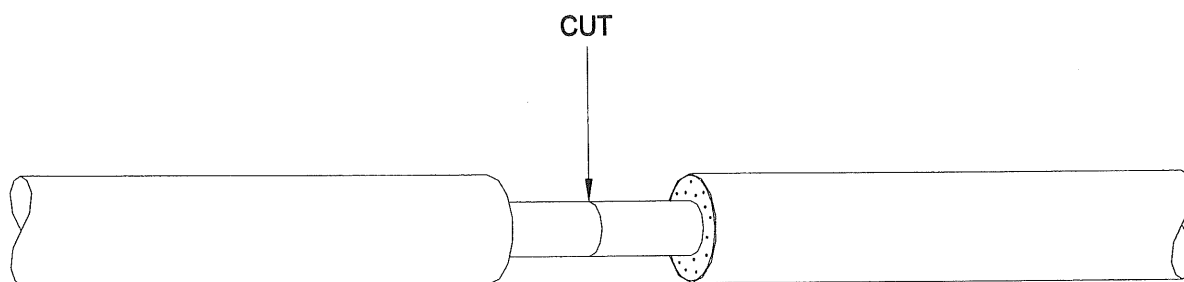


## FIELD CUTTING PIPE TO A SPECIFIC LENGTH

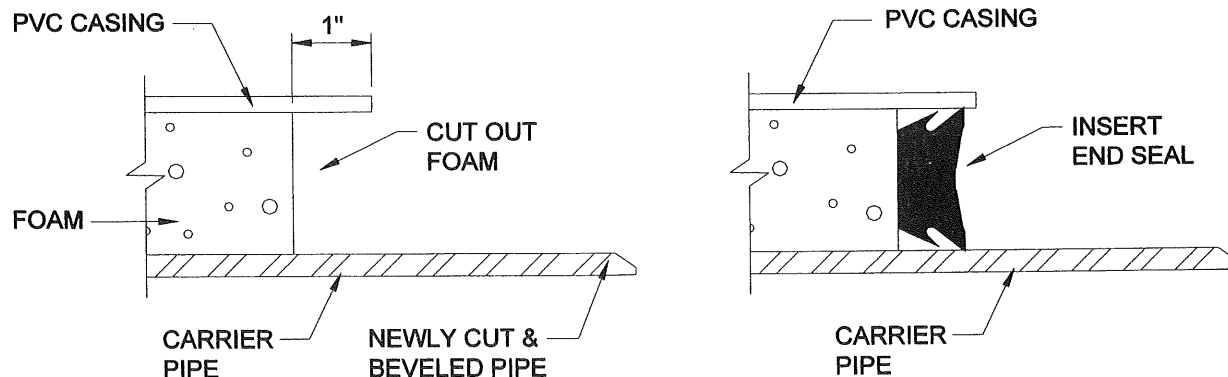
Determine the exact length of carrier pipe needed. Mark the casing at this point. Measure back 6 inches on both sides and mark the casing at these points using a wrap-around.



Use a carpenter's handsaw or PVC saw to cut the PVC casing. Remove the PVC casing and cut off the insulation. Be careful not to damage the steel carrier pipe during this operation. See illustration below.



Mark, cut, and bevel the steel pipe at the desired length. Make sure the cut is square. Remove any burrs and ridges on the pipe. Using a utility knife, remove the insulation between the casing and the carrier pipe one inch in from the face of the PVC casing as shown below. Insert the rubber end seal between the casing and the carrier pipe using the handle of a hammer or screwdriver to push the seal all the way. Silicone caulking may be used in lieu of the rubber end seal.



**START UP PROCEDURE:** Start up procedure shall conform to generally accepted practices and be done in a workman like manner. The line shall be filled slowly from any available low-pressure source. The water can be introduced from lines in service directly through valved connections or by temporary connections to taps made in the new line. If possible, all such connections should be made at the lowest point in the line to avoid air entrapment. All valves and other control points in the line that are open as the line filling begins should be closed gradually to avoid the possibility of water hammer.