

Quality People. Building Solutions.

Comfort Systems USA (Arkansas), Inc.
P.O. Box 16620
Little Rock, AR 72231
Phone 501-834-3320
Fax 501-834-5416

Date: 2/12/2024

Return Request: 2/22/2024

Project: Arkansas Children's Hospital – 4D Renovations

Supplier: Custom Metals

Manufacturer: Tuttle & Bailey

Submittal: Air Terminal Units (VAV)

Submittal Number: 23 36 00-01

Drawing # and Installation: Mechanical Drawings

ARCHITECT

Cromwell
1300 E. 6th Street
Little Rock, AR 72202
501-372-2900

ENGINEER

Cromwell
1300 E. 6th Street
Little Rock, AR 72202
501-372-2900

GENERAL CONTRACTOR

Nabholz
612 Garland St.
Conway, AR 72032
501-505-5800

MECHANICAL SUBCONTRACTOR

Comfort Systems USA (Arkansas), Inc.
9924 Landers Rd.
N. Little Rock, AR 72117
501-834-3320

Notes:

chowell@comfortar.com



Job: **ACH 4D Renovations**

Spec Section: **HVAC**

Item: **Supply Terminals**

Submitted by:

Joe Minton Jr.

HVAC Project Manager

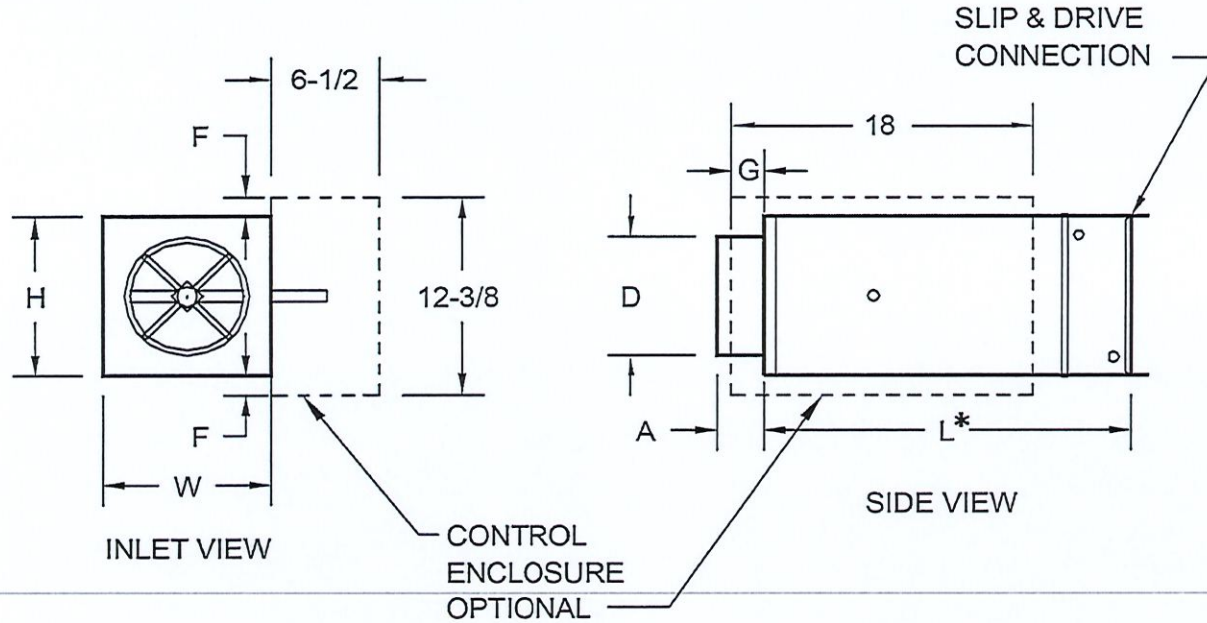
(501) 607-0043

02-09-2024

Submittal Drawing

Main Products

SDV



- SDV With Hot Water Coils
- Round Inlet Compatible With Nominal Rigid And Flex Duct Connections
- Slip And Drive Discharge Connection
- Patented Flo-Cross Multipoint Flo Sensor
- Damper Shaft With Delrin Bearings And Position Indicator
- Low Leakage Damper With Seal
- Right Or Left Hand Configurations Available (Right Hand Shown)

* Add 2-1/4 To Dim - L For 3 & 4 Row Coils. Note: Coil Connection Sizes Are All 7/8", Except For The Sizes 4,5,6,7,8 One Row Coils Which Are 1/2"

Dimensions are in inches, Product information subject to change without notice

<p>Project ACH 4D RENOVATIONS</p> <p>Architect</p> <p>Engineer</p> <p>Contractor</p> <p>Version 1.0.00</p>	<p>Submitted By: Shelly Wade</p> <p>Wade Company 708 Garland Little Rock, Arkansas 72201</p>	<p>Date: 02-09-24</p> <p style="text-align: center;">SDV</p> <p>SDV - Single Duct Terminal Unit</p>
---	---	---

Submittal Drawing

Main Products (continued)

INLET SIZE	Dim - L	Dim - H	Dim - W	Dim - A	Dim - D	Dim - F	Dim - G
08 - 0 OR 90-900 CFM	20-1/2	10	12	3-3/8	7-7/8	1-1/8	7-1/4

OptionSchedule

UNIT CONFIG 0 - STANDARD CONSTRUCTION LINER 2 - INSUL-GUARD CASING OPTIONS CONST 0 - 22 GAUGE	DISCHARGE OPTIONS 0 - STANDARD RECTANGULAR CONTROL TYPE 0000 - NONE HEAT W21 - LEFT HAND, 1-ROW, HOT WATER
---	--

ID	Quantity	Tag	CONTROLS DAMPER SIDE	INLET SIZE	MIN CFM	MAX CFM	AUX CFM	KW
1	1	VAV22-3	L - LEFT	08 - 0 OR 90-900 CFM	180	375	200	0

UNIT CONFIG 0 - STANDARD CONSTRUCTION LINER 2 - INSUL-GUARD CASING OPTIONS CONST 0 - 22 GAUGE	DISCHARGE OPTIONS 0 - STANDARD RECTANGULAR CONTROL TYPE 0000 - NONE HEAT W11 - RIGHT HAND, 1-ROW, HOT WATER
---	---

ID	Quantity	Tag	CONTROLS DAMPER SIDE	INLET SIZE	MIN CFM	MAX CFM	AUX CFM	KW
2	1	VAV22-4	R - RIGHT	08 - 0 OR 90-900 CFM	180	375	200	0

Dimensions are in inches, Product information subject to change without notice

Project <u>ACH 4D RENOVATIONS</u> Architect Engineer Contractor Version 1.0.00	Submitted By: Shelly Wade Wade Company 708 Garland Little Rock, Arkansas 72201	Date: 02-09-24 SDV SDV - Single Duct Terminal Unit
--	---	---