



*Quality People. Building Solutions.*

Comfort Systems USA (Arkansas), Inc.  
P.O. Box 16620  
Little Rock, AR 72231  
Phone 501-834-3320  
Fax 501-834-5416

**Date:** 2/4/2025

**Return Request:** 2/14/2025

**Project:** City Of Sherwood Public Works (Maintenance Building)

**Supplier:** Falk

**Manufacturer:** Various

**Submittal:** Plumbing Piping Specialties

**Submittal Number:** 22 10 06-01

**Drawing # and Installation:** Plumbing Drawings

**ARCHITECT**

Cromwell  
1300 East 6<sup>th</sup> Street  
Little Rock, AR 72202  
501-372-2900

**ENGINEER**

Cromwell  
1300 East 6<sup>th</sup> Street  
Little Rock, AR 72202  
501-372-2900

**GENERAL CONTRACTOR**

Baldwin & Shell  
1000 W. Capitol Ave.  
Little Rock, AR 72201  
501-374-8677

**MECHANICAL SUBCONTRACTOR**

Comfort Systems USA (Arkansas), Inc.  
9924 Landers Rd.  
N. Little Rock, AR 72117  
501-834-3320

Notes:

--

**CSUSA PROJECT NO.**

**24-6084**

[sean@comfortar.com](mailto:sean@comfortar.com)

9924 Landers Rd.  
No. Little Rock, AR 72117

WCO

<b>K</b>	<div style="display: flex; justify-content: space-between; align-items: center;"> <div style="width: 30%;"> <b>SMITH® JAY R. SMITH MFG. CO.®</b>  <small>MEMBER OF MORRIS GROUP INTERNATIONAL  POST OFFICE BOX 3237  MONTGOMERY, ALABAMA 36109-0237 (USA)  TEL: 334-277-8520 FAX: 888-377-7818 www.jrsmith.com</small> </div> <div style="width: 10%; text-align: center;">   <small>MEMBER OF:</small> </div> <div style="width: 10%; text-align: center;">   <small>MEMBER OF:</small> </div> <div style="width: 10%; text-align: center;">   <small>MEMBER OF:</small> </div> </div> <div style="width: 35%; border: 1px solid black; padding: 5px;"> <b>LOCATION</b> </div>																																	
	<h1 style="margin: 0;">WALL ACCESS COVERS</h1>																																	
<b>DRAWING NUMBER</b> <b>S4710</b>	<h2 style="margin: 0;">ROUND FACE-OF-WALL COVER AND SCREW</h2>																																	
<b>SIZE</b> <b>A</b>	<div style="display: flex; justify-content: space-around; align-items: flex-start;"> <div style="width: 45%;"> <p style="text-align: center;">Stainless Steel Shallow Cover</p> </div> <div style="width: 45%;"> <p style="text-align: center;">Chrome Plated Deep Cover</p> </div> </div>																																	
<b>SCALE:</b> <b>NONE</b>	<div style="display: flex; justify-content: space-around; align-items: center;"> <div style="text-align: center;"> <input type="checkbox"/> <b>Fig. 4710</b>  eg: 4710 (-04)** </div> <div style="text-align: center;"> <input type="checkbox"/> <b>Fig. 4715</b>  eg: 4715 (-07)Δ </div> </div>																																	
<b>DATE:</b> <b>2-16-70</b>	<table border="1" style="width: 100%; border-collapse: collapse;"> <thead> <tr> <th>Plug Size•</th> <th>Fig. 4710• B Dia.</th> <th>Specify FIG.</th> <th>Fig. 4715• E Dia.</th> <th>Specify FIG.</th> </tr> </thead> <tbody> <tr> <td>1 1/2 (38), 2 (51), 2 1/2 (64)</td> <td>4 1/4 (110)</td> <td>4710 (-04)</td> <td>*7 1/4 (185)</td> <td>4715 (-07)</td> </tr> <tr> <td>3 (76), 3 1/2 (89), 4 (100)</td> <td>5 1/4 (135)</td> <td>4710 (-05)</td> <td>*7 1/4 (185)</td> <td>4715 (-07)</td> </tr> <tr> <td>5 (125)</td> <td>7 (180)</td> <td>4710 (-07)</td> <td>*7 1/4 (185)</td> <td>4715 (-07)</td> </tr> <tr> <td>6 (150)</td> <td>9 1/4 (235)</td> <td>4710 (-09)</td> <td>9 1/4 (235)</td> <td>4715 (-09)</td> </tr> <tr> <td>8 (205), 10 (255)</td> <td>11 1/4 (285)</td> <td>4710 (-11)</td> <td>11 1/4 (285)</td> <td>4715 (-11)</td> </tr> </tbody> </table>				Plug Size•	Fig. 4710• B Dia.	Specify FIG.	Fig. 4715• E Dia.	Specify FIG.	1 1/2 (38), 2 (51), 2 1/2 (64)	4 1/4 (110)	4710 (-04)	*7 1/4 (185)	4715 (-07)	3 (76), 3 1/2 (89), 4 (100)	5 1/4 (135)	4710 (-05)	*7 1/4 (185)	4715 (-07)	5 (125)	7 (180)	4710 (-07)	*7 1/4 (185)	4715 (-07)	6 (150)	9 1/4 (235)	4710 (-09)	9 1/4 (235)	4715 (-09)	8 (205), 10 (255)	11 1/4 (285)	4710 (-11)	11 1/4 (285)	4715 (-11)
Plug Size•	Fig. 4710• B Dia.	Specify FIG.	Fig. 4715• E Dia.	Specify FIG.																														
1 1/2 (38), 2 (51), 2 1/2 (64)	4 1/4 (110)	4710 (-04)	*7 1/4 (185)	4715 (-07)																														
3 (76), 3 1/2 (89), 4 (100)	5 1/4 (135)	4710 (-05)	*7 1/4 (185)	4715 (-07)																														
5 (125)	7 (180)	4710 (-07)	*7 1/4 (185)	4715 (-07)																														
6 (150)	9 1/4 (235)	4710 (-09)	9 1/4 (235)	4715 (-09)																														
8 (205), 10 (255)	11 1/4 (285)	4710 (-11)	11 1/4 (285)	4715 (-11)																														
<b>APPROVED BY:</b> <b>JM</b>	<p>*= Die Formed SS Cover Only.  ** Reflects "B" DIA.  Δ Reflects "E" DIA.  <b>•NOTE:</b> Dimensions shown in parenthesis are in millimeters.</p>																																	
<b>CHECKED BY:</b> <b>BH</b>	<div style="display: flex; justify-content: space-between;"> <div style="width: 30%;"> <b>REGULARLY FURNISHED:</b>  Stainless Steel Shallow Cover or  Chrome Plated Bronze Deep Cover  with Center Screw as Indicated by  Figure Number Selected. </div> <div style="width: 30%;"> <b>VARIATIONS:</b>  <input type="checkbox"/> Longer Center Screw  (Specify Length)  <input type="checkbox"/> Vandal Proof Screw -U </div> <div style="width: 30%;"> <b>OPTIONAL MATERIALS:</b>  <input type="checkbox"/> Nickel Bronze -NB (Fig. 4715 only)  <input type="checkbox"/> Polished Bronze Cover -PB  <input type="checkbox"/> Prime Coated Steel Cover -PC  (Fig. 4710 only) </div> </div>																																	
<b>DRAWN BY:</b> <b>RK</b>	<div style="display: flex; justify-content: space-between;"> <div style="width: 30%;"> <b>FIGURE NUMBER</b>  <div style="font-size: 2em; font-weight: bold;">4710, 4715</div> </div> <div style="width: 30%;"> <table border="1" style="width: 100%; border-collapse: collapse;"> <tr> <td style="width: 10%; text-align: center;">K</td> <td style="width: 10%; text-align: center;">8-18-23</td> <td rowspan="4" style="width: 20%;">Removed Functon Revised table Revised table Chg Table</td> <td style="width: 10%; text-align: center;">HS</td> <td style="width: 10%; text-align: center;">CL</td> <td rowspan="4" style="width: 20%;">WEIGHT POUNDS</td> <td rowspan="4" style="width: 20%;">VOLUME CUBIC FEET</td> <td rowspan="4" style="width: 20%; text-align: center;"> <b>FIGURE NUMBER</b>  <div style="font-size: 2em; font-weight: bold;">4710, 4715</div> </td> </tr> <tr> <td style="text-align: center;">J</td> <td style="text-align: center;">11-6-12</td> <td style="text-align: center;">TBW</td> <td style="text-align: center;">CL</td> </tr> <tr> <td style="text-align: center;">I</td> <td style="text-align: center;">1-19-96</td> <td style="text-align: center;">CMD</td> <td style="text-align: center;">BS</td> </tr> <tr> <td style="text-align: center;">H</td> <td style="text-align: center;">8-31-95</td> <td style="text-align: center;">EMB</td> <td style="text-align: center;">BS</td> </tr> <tr> <td style="text-align: center;">REV.</td> <td style="text-align: center;">DATE</td> <td style="text-align: center;">DESCRIPTION</td> <td style="text-align: center;">BY</td> <td style="text-align: center;">CKD. BY</td> <td></td> <td></td> <td></td> </tr> </table> </div> </div>				K	8-18-23	Removed Functon Revised table Revised table Chg Table	HS	CL	WEIGHT POUNDS	VOLUME CUBIC FEET	<b>FIGURE NUMBER</b> <div style="font-size: 2em; font-weight: bold;">4710, 4715</div>	J	11-6-12	TBW	CL	I	1-19-96	CMD	BS	H	8-31-95	EMB	BS	REV.	DATE	DESCRIPTION	BY	CKD. BY					
K	8-18-23	Removed Functon Revised table Revised table Chg Table	HS	CL	WEIGHT POUNDS	VOLUME CUBIC FEET		<b>FIGURE NUMBER</b> <div style="font-size: 2em; font-weight: bold;">4710, 4715</div>																										
J	11-6-12		TBW	CL																														
I	1-19-96		CMD	BS																														
H	8-31-95		EMB	BS																														
REV.	DATE	DESCRIPTION	BY	CKD. BY																														







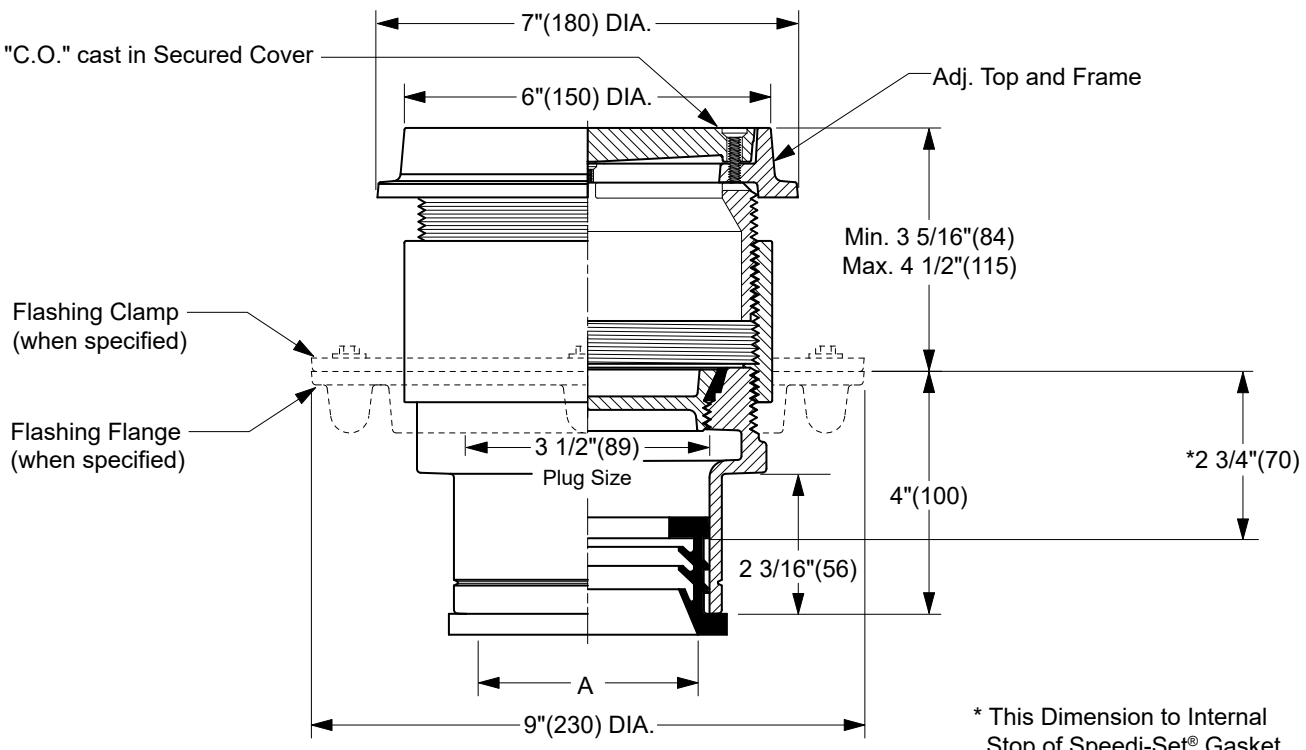
**WARNING:** Cancer and Reproductive Harm - www.P65Warnings.ca.gov

FCO

<b>FIGURE NUMBER</b>	<b>T</b>	<div style="display: flex; justify-content: space-between; align-items: center;"> <div style="text-align: left;"> <b>SMITH® JAY R. SMITH MFG. CO.®</b>  <small>MEMBER OF MORRIS GROUP INTERNATIONAL            POST OFFICE BOX 3237            MONTGOMERY, ALABAMA 36109-0237 (USA)            TEL: 334-277-8520 FAX: 888-377-7818 www.jrsmith.com</small> </div> <div style="text-align: center;">   <small>MEMBER OF:</small> </div> <div style="text-align: center;">   <small>MEMBER OF:</small> </div> </div>				<b>LOCATION</b>  
	<b>SIZE</b>	<b>FINISHED FLOOR CLEANOUTS WITH "TWIS-TO-FLOOR®" ADJUSTABLE TOPS</b>				
	<b>SCALE:</b>	<b>ROUND NICKEL BRONZE TOP WITH PUSH-ON SPEEDI-SET® OUTLET</b>				
	<b>DATE:</b>	<div style="text-align: center;"> <p style="margin-top: 10px;"> <b>"C.O." cast in Secured Cover</b>  <b>5 3/4"(145) DIA.</b>  <b>Adj. Top and Frame</b>  <b>Min. 3 3/16"(81) Max. 4 3/8"(111)</b>  <b>Flashing Clamp (when specified)</b>  <b>Flashing Flange (when specified)</b>  <b>3 1/2"(89) Plug Size</b>  <b>4"(100)</b>  <b>2 3/16"(56)</b>  <b>9"(230) DIA.</b>  <b>"A" (Pipe Size) = 02(50), 03(75) or 04(100)</b>  <b>TWIS-TO-FLOOR® ADJUSTMENT</b>  <b>SPEEDI-SET® OUTLET ▲</b> </p> <p style="margin-top: 10px;"> <b>* This Dimension to Internal Stop of Speedi-Set® Gasket.</b>   <b>NOTE: For applications using core drilling, the largest diameter of the cleanout assembly is 6 5/16"(160).</b> </p> </div>				
	<b>APPROVED BY:</b>					
<b>CHECKED BY:</b>	<div style="display: flex; justify-content: space-between;"> <div style="width: 45%;"> <div style="display: flex; align-items: center; margin-bottom: 5px;"> <input type="checkbox"/> Fig. 4031L.....Gasket Seal - ABS Plug           <input type="checkbox"/> Fig. 4032L.....Gasket Seal - Bronze Plug           <input type="checkbox"/> Fig. 4033L.....Taper Thread - Bronze Plug           <input type="checkbox"/> Fig. 4034L.....Taper Thread - ABS Plug         </div> <div style="margin-top: 10px;"> </div> </div> <div style="width: 50%;"> <p>(Twis-to-Floor® design shown with gasketed plug.)</p> <p><b>NOTE:</b> Dimensions shown in parentheses are in millimeters.</p> </div> </div>					
<b>DRAWN BY:</b>	<div style="display: flex; justify-content: space-between;"> <div style="width: 45%;"> <p><b>REGULARLY FURNISHED:</b></p> <p>Duco Cast Iron Cleanout with Round Adjustable Scoriated Secured Nickel Bronze Top. Closure Plug Type as Indicated By Figure Number Selected.</p> <p>▲ Available in Extra Heavy, Service Weight or NO-HUB.</p> </div> <div style="width: 50%;"> <p><b>VARIATIONS:</b></p> <div style="display: flex; flex-direction: column; gap: 5px;"> <input type="checkbox"/> Flashing Flange -F           <input type="checkbox"/> Flange with Flashing Clamp -F-C           <input type="checkbox"/> Carpet Clamping Type -X           <input type="checkbox"/> Carpet Marker Type -Y           <input type="checkbox"/> Vandal Proof Top -U           <input type="checkbox"/> Wide Flange (DX)         </div> </div> </div>					
<b>4031 SERIES</b>	<div style="display: flex; justify-content: space-between;"> <div style="width: 45%;"> <p><b>OPTIONAL MATERIALS:</b></p> <div style="display: flex; flex-direction: column; gap: 5px;"> <input type="checkbox"/> Galvanized Cast Iron -G           <input type="checkbox"/> Polished Bronze Top -PB           <input type="checkbox"/> Stainless Steel Top -NBSS         </div> </div> </div>					

REV.	DATE	DESCRIPTION	BY	CKD. BY	WEIGHT POUNDS	VOLUME CUBIC FEET	FIGURE NUMBER
							4031 SERIES

COTG, DCOTG

<b>S</b>	   				<b>LOCATION</b>  														
	<b>FLOOR CLEANOUTS WITH "TWIS-TO-FLOOR"® ADJUSTABLE TOPS FOR UNFINISHED AREAS</b>																		
	<b>ROUND EXTRA HEAVY DUTY CAST IRON TOP WITH PUSH-ON SPEEDI-SET® OUTLET</b>																		
																			
	<p><b>TWIS-TO-FLOOR® ADJUSTMENT</b></p> <p><b>SPEEDI-SET® OUTLET ▲</b></p> <p>"A" (Pipe Size) = 02(50), 03(75) or 04(100)</p> <p>Conforms to ASME A112.36.2/CSA B79.2</p>																		
<div style="display: flex; justify-content: space-between;"> <div style="width: 45%;"> <p><b>REGULARLY FURNISHED:</b>            Duco Cast Iron Cleanout with Round Adjustable Scoriated Secured Cast Iron Top. Closure Plug Type as Indicated By Figure Number Selected.</p> </div> <div style="width: 45%;"> <p><b>VARIATIONS:</b></p> <div style="display: flex; align-items: flex-start;"> <input type="checkbox"/> Flashing Flange -F  <input type="checkbox"/> Flange with Flashing Clamp -F-C  <input type="checkbox"/> Vandal Proof Top -U           </div> <p>▲ Available in Extra Heavy, Service Weight or NO-HUB.</p> </div> </div>																			
<div style="display: flex; justify-content: space-between;"> <div style="width: 45%;"> <p><b>OPTIONAL MATERIALS:</b></p> <div style="display: flex; align-items: flex-start;"> <input type="checkbox"/> Galvanized Cast Iron -G  <input type="checkbox"/> Ductile Iron Cover -M           </div> </div> <div style="width: 45%;"> <p><b>FIGURE NUMBER</b>  <span style="font-size: 1.5em; font-weight: bold;">4231 SERIES</span></p> </div> </div>																			
<table border="1" style="width: 100%; border-collapse: collapse; font-size: 0.8em;"> <tr> <th>REV.</th> <th>DATE</th> <th>DESCRIPTION</th> <th>BY</th> <th>CKD. BY</th> <th>WEIGHT POUNDS</th> <th>VOLUME CUBIC FEET</th> </tr> <tr> <td> </td> <td> </td> <td> </td> <td> </td> <td> </td> <td> </td> <td> </td> </tr> </table>						REV.	DATE	DESCRIPTION	BY	CKD. BY	WEIGHT POUNDS	VOLUME CUBIC FEET							
REV.	DATE	DESCRIPTION	BY	CKD. BY	WEIGHT POUNDS	VOLUME CUBIC FEET													

WHA





**Precision Plumbing Products**

*"Specify with Confidence - Install with Pride"*

**LEAD FREE**

## THREADED WATER HAMMER ARRESTORS

[www.pppinc.net](http://www.pppinc.net)

**ONLY ONE MOVING PART!**

**WATER HAMMER ARRESTORS ARE  
SPECIFIED FOR COMMERCIAL,  
INDUSTRIAL AND RESIDENTIAL USES.**

**PPP WATER HAMMER ARRESTORS  
SPECIFIED FOR MANY  
INSTALLATIONS!**



A maintenance-free installation is assured when using this type of arrestor...the only moving part is the free-moving piston furnished with "O"ring seals which have been tested for reliability in excess of normal operating ranges.

**SC-500A - SC-2000F**

### **FLUID HAMMER IN FLUID TRANSMISSION LINES** – a definition.

Fluid Hammer is a series of hydraulic shock waves generated within the confines of a piping system due to the sudden stopping of fluid flow. This condition is caused by fast closing of positive valves incorporated within the system. The effect of fluid hammer is damaging if allowed to exist for any length of time and will result in broken pipes and damage to other components in the system.

U.S. Patent No. 3,633,627

**40 Years  
of outstanding  
performance**



Low Lead



Complies with low lead law.



We do not export jobs.



## SPECIFICATIONS & INSTALLATIONS



**A**

**INSTALLATION:** May be installed in new or existing plumbing systems with a standard pipe tee.

**MAINTENANCE:** Maintenance free – the piston is the only moving part.

**TEMPERATURE RANGE:** -40° F to + 212° F (-4.4° C to + 100° C)

**CONSTRUCTION:** Barrel-fabricated of type "L" hard drawn copper.

**Cap:** Copper or free turning brass.

**Piston:** Machined of Composite Material

**Threaded Adapter:** Machined of C69300 Low Lead Brass

**Seals:** "O"rings: EPDM.

**Seal Lubricant:** Dow-Corning Silicone Compound #111, FDA listed for use in potable water systems.

**Nickel Plated:** For Salt Water Application.

**OPERATING PRESSURE:** Designed to operate on all domestic and commercial systems.

Normal operating pressure 0 to 80 PSIG. Max spike pressure 400 PSIG. System Pressures above 80 PSI consult factory.

## SIZING INFORMATION

For equipment and fixtures not listed below, size in accordance with load values (WSFU) assigned the same.

Extract from: PDI WH201-06

FIXTURE	TYPE OF SUPPLY CONTROL	WEIGHT IN FIXTURE UNITS			
		Public		Private	
		C.W.	H.W.	C.W.	H.W.
Water Closet	Flush Valve	8	-	5	-
Water Closet	Flush Tank	5	-	2.5	-
Pedestal Urinal	Flush Valve	4	-	-	-
Stall or Wall Urinal	Flush Valve	4	-	-	-
Lavatory	Faucet	1 1/2	1 1/2	1	1
Bathtub	Faucet	2	3	1 1/2	1 1/2
Shower Head	Mixing Valve	2	3	1	2
Bathroom Group	Flush Valve Closet	-	-	8	3
Bathroom Group	Flush Tank Closet	-	-	6	3
Separate Shower	Mixing Valve	-	-	1	2
Service Sink	Faucet	3	3	-	-
Laundry Tubs (1-3)	Faucet	-	-	3	3
Comb. Fixture	Faucet	-	-	3	3

## PDI SIZING AND SELECTION TABLE

PIPE SIZE	FIXTURE UNITS	CROSS REF. PDI
1/2"	1-11	A
3/4"	12-32	B
1"	33-60	C
1 1/4"	61-113	D
1 1/2"	114-154	E
2"	155-330	F

Extract from: PDI WH201

## NO ACCESS PANEL REQUIRED (CONSULT LOCAL CODES)

## DIMENSIONAL AND AIR LOADING DATA

PART NUMBER	A OAL	B NPT	NITROGEN PRELOAD PSI
SC-500A	6 1/4"	1/2" brass	60
SC-750B	7 1/4"	3/4" brass	60
SC-1000C	9 1/4"	1" brass	60
SC-1250D	9 1/2"	1" brass	60
SC-1500E	11 1/4"	1" brass	60
SC-2000F	12"	1" brass	60

## PROJECT SUBMITTAL

Project: \_\_\_\_\_

Contractor: \_\_\_\_\_

Engineer: \_\_\_\_\_

Date Submitted: \_\_\_\_\_

Prepared By: \_\_\_\_\_

## Precision Plumbing Products

Division of JL Industries, Inc.



802 SE 199th Avenue  
Portland, Oregon 97233

T (503) 256-4010  
F (503) 253-8165

www.pppinc.net

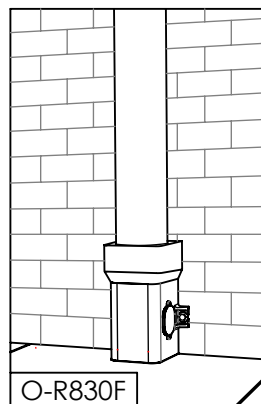


Complies with low lead law.

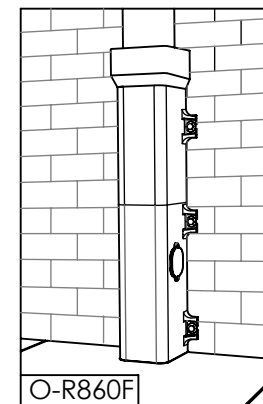
# DOWNSPOUT BOOT

O-Series - Offset Outlet  
8" ROUND TOP BELL  
CAST IRON DOWNSPOUT BOOT

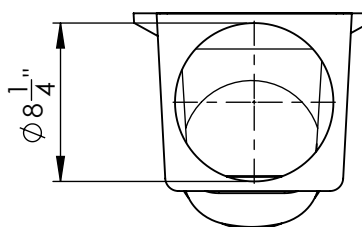
PART No.	LENGTH "L"	OUTLET O.D. "O"	WEIGHT	CLEANOUT
O-R824F	24"	8.25"	93.6 LBS.	YES
O-R824FX	24"	8.25"	93.5 LBS.	NO
O-R830F	30"	8.25"	113.7 LBS.	YES
O-R830FX	30"	8.25"	113.5 LBS.	NO
O-R836F	36"	8.25"	134.8 LBS.	YES
O-R836FX	36"	8.25"	134.5 LBS.	NO
O-R842F	42"	8.25"	157.1 LBS.	YES
O-R842FX	42"	8.25"	157.7 LBS.	NO
O-R848F	48"	8.25"	180.8 LBS.	YES
O-R848FX	48"	8.25"	180.5 LBS.	NO
O-R854F	54"	8.25"	197.9 LBS.	YES
O-R854FX	54"	8.25"	197.6 LBS.	NO
O-R860F	60"	8.25"	225.6 LBS.	YES
O-R860FX	60"	8.25"	225.3 LBS.	NO
O-R866F	66"	8.25"	245.6 LBS.	YES
O-R866FX	66"	8.25"	245.3 LBS.	NO
O-R872F	72"	8.25"	266.1 LBS.	YES
O-R872FX	72"	8.25"	265.7 LBS.	NO



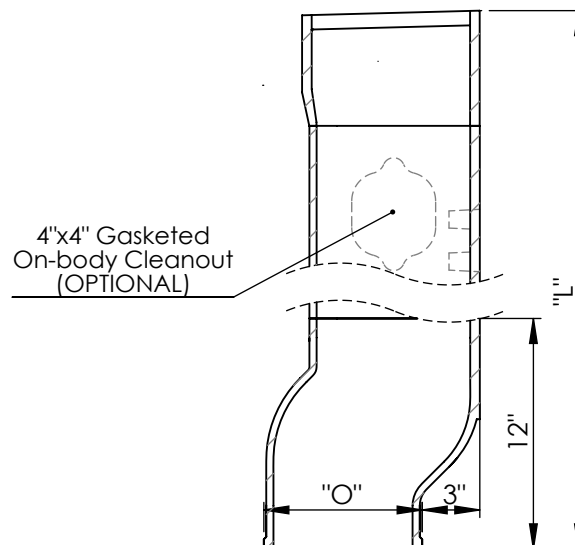
INSTALLED VIEW



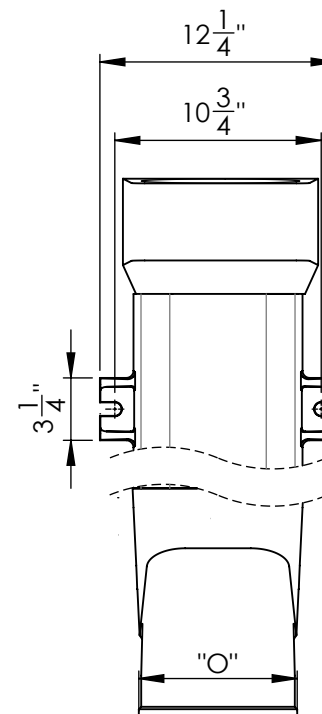
INSTALLED VIEW



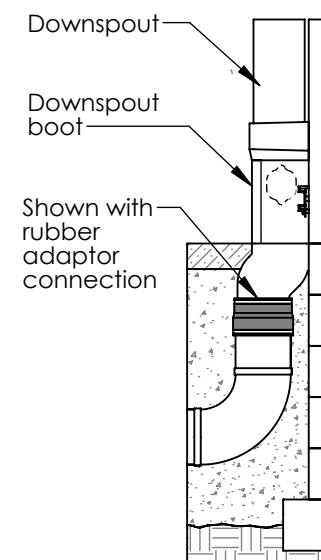
TOP VIEW



SIDE VIEW



FRONT VIEW



TYPICAL  
MOUNTED DETAIL

NOTES:

- \* LENGTHS 48" OR GREATER SUPPLIED WITH TOP EXTENSIONS. (2-pc. boot)
- \* CUSTOM LENGTHS AND CONFIGURATIONS AVAILABLE.
- \* PART DRAWING FOR INDIVIDUAL MODEL NUMBER AVAILABLE UPON REQUEST.
- \* STANDARD CLEANOUT LOCATION RIGHT SIDE FACING BOOT, MAY BE RELOCATED TO LEFT OR FRONT UPON REQUEST.

**DOWNSPOUTBOOTS.com**

A DIVISION OF **J.R. HOE**

Ph: (606) 248-5560  
F: (606) 248-6308

MATERIAL: ASTM-A48 CLASS 30 CI  
100% Made in USA